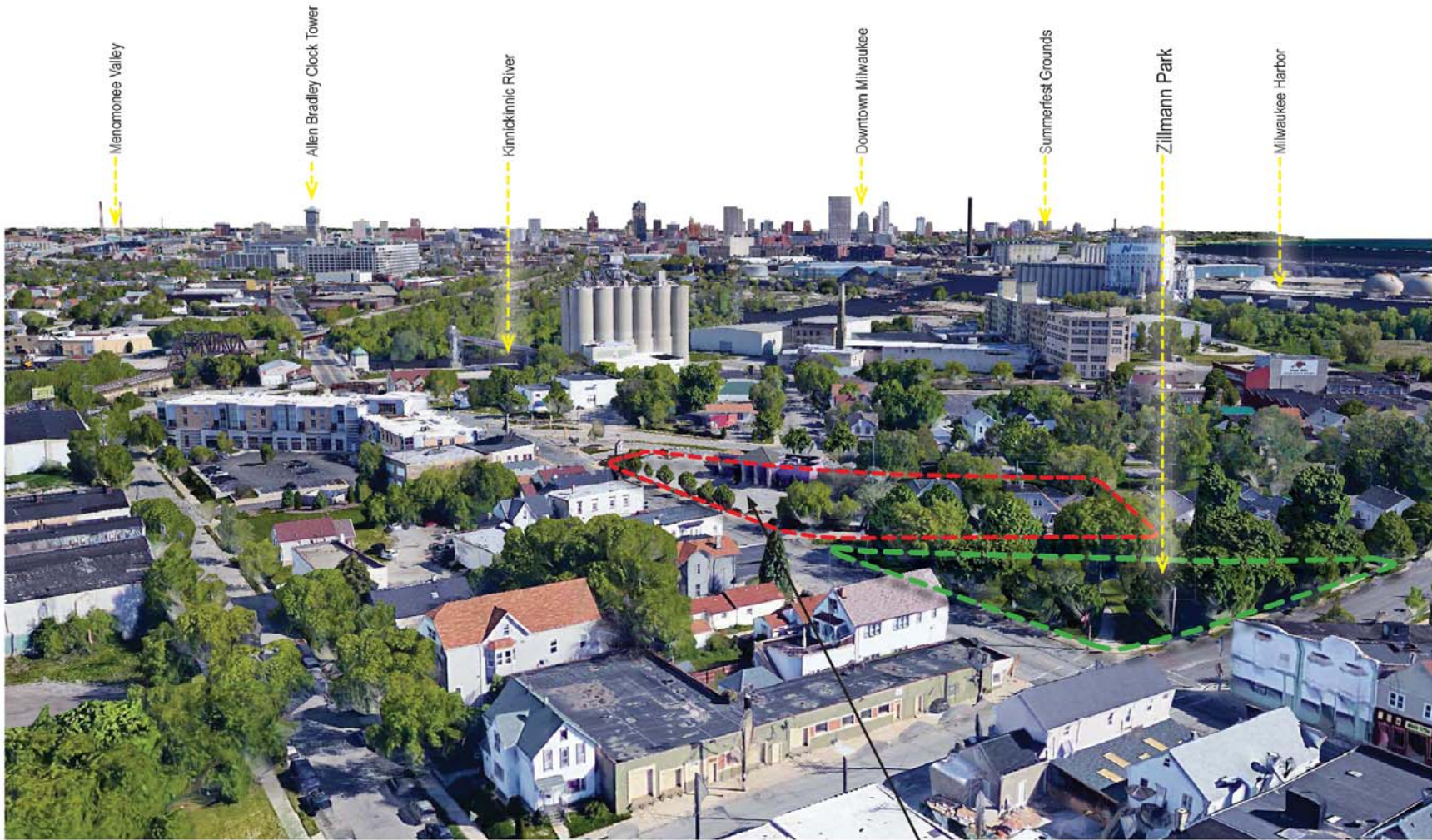
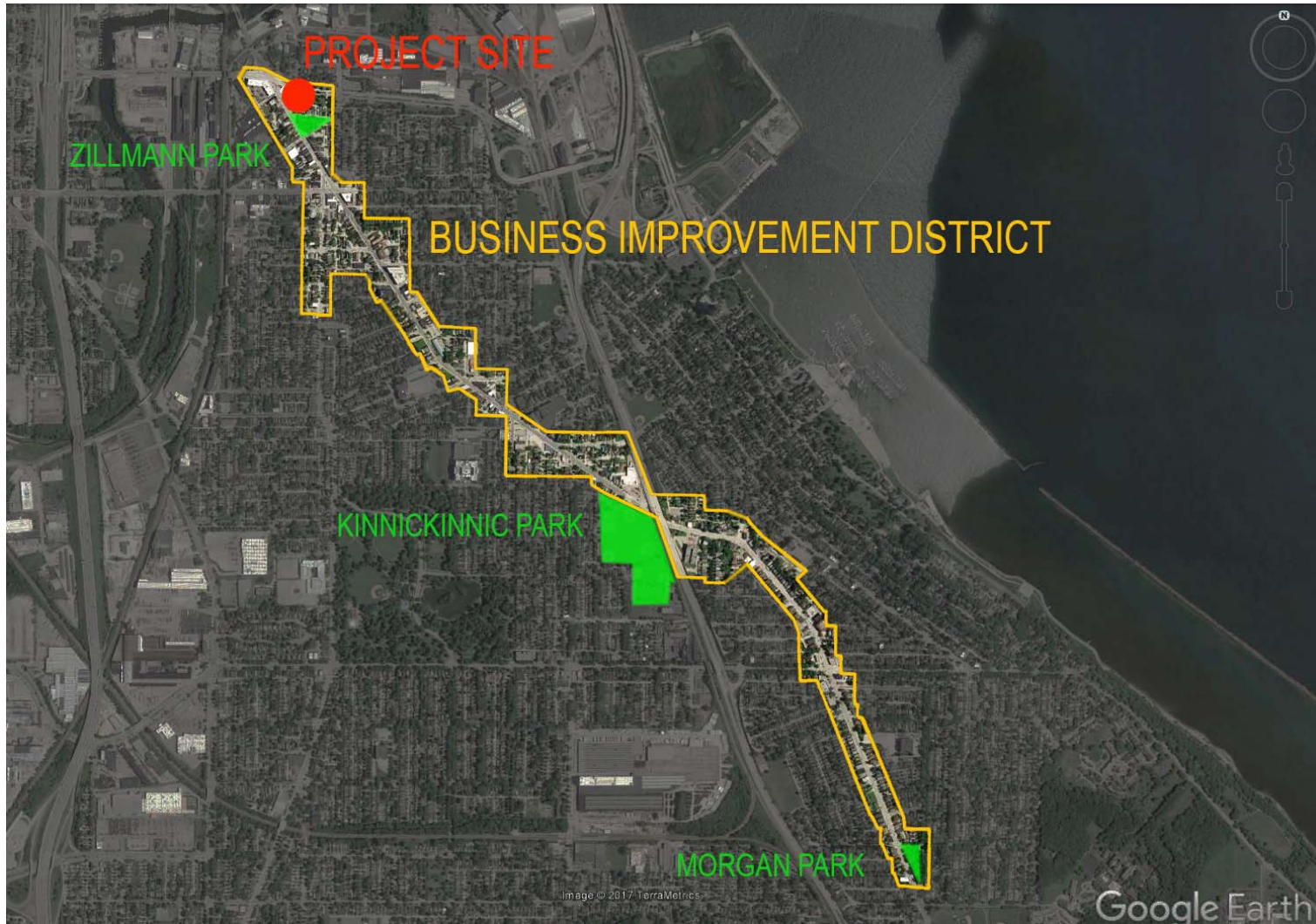


VICINITY MAP



PROJECT SITE

AERIAL VIEW LOOKING NORTH



KINNICKINNIC PARKS AND BUSINESS DISTRICT



View South from S. Kinnickinnic and E. Bay Street



View Southwest on E. Bay Street



View Northeast from S. Kinnickinnic and E. Archer Ave.



View East down E. Archer Ave

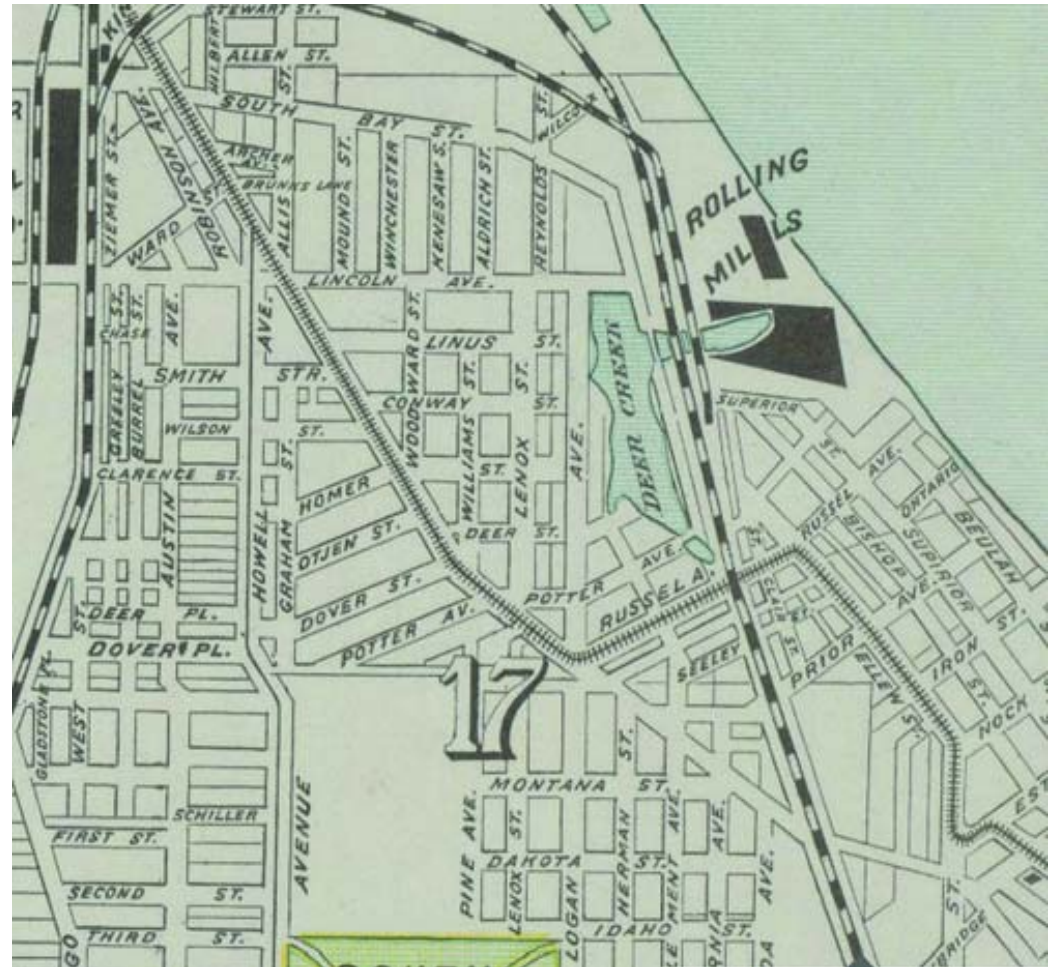
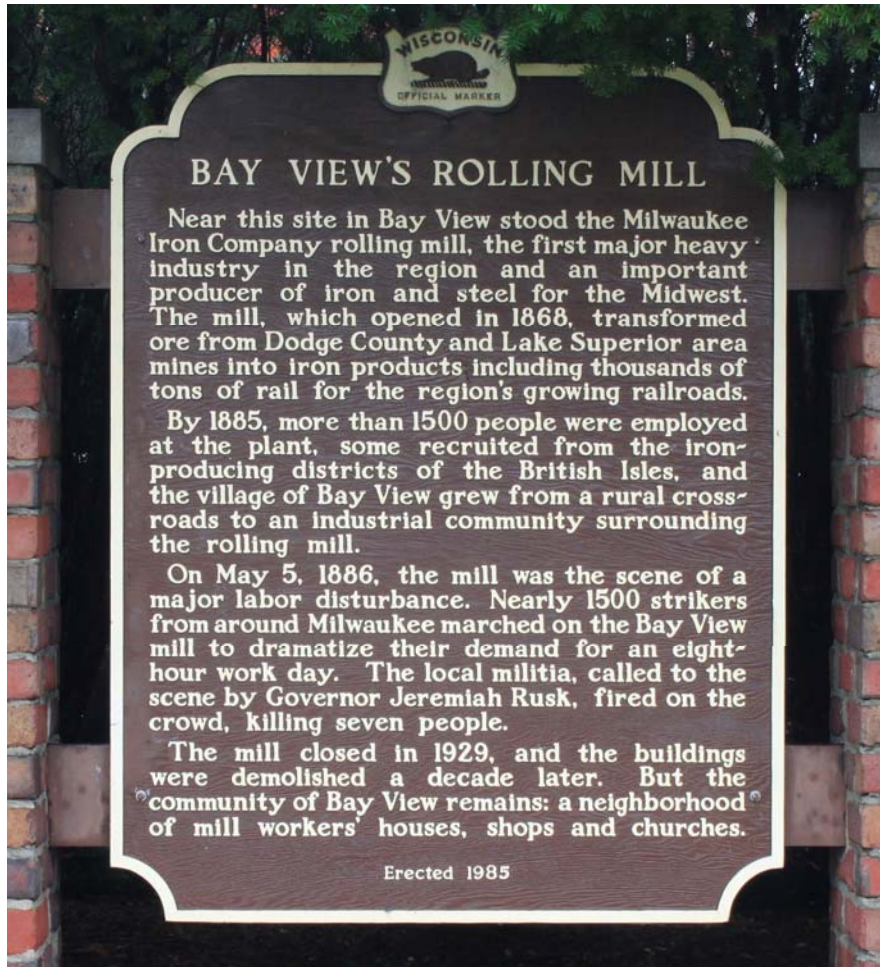


View South on E. Archer Ave, looking at Zillman Park



View West on E. Bay Street

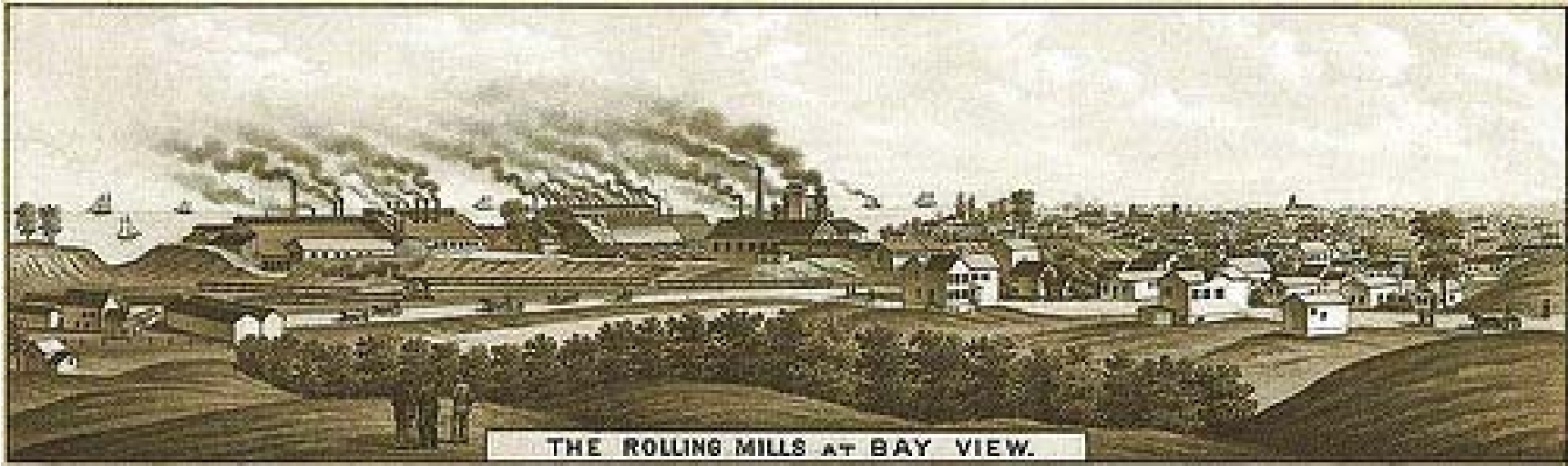
EXISTING SITE CONDITIONS



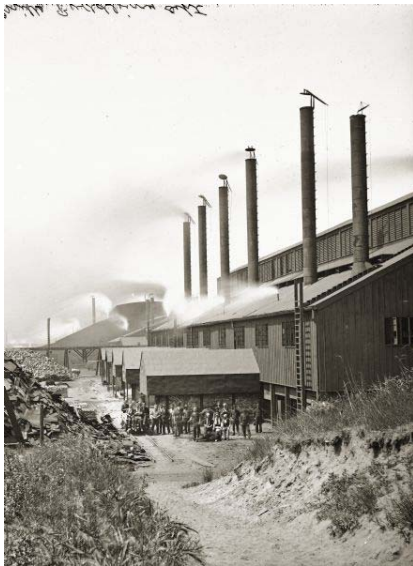
INDUSTRIAL ORIGINS OF THE BAY VIEW COMMUNITY

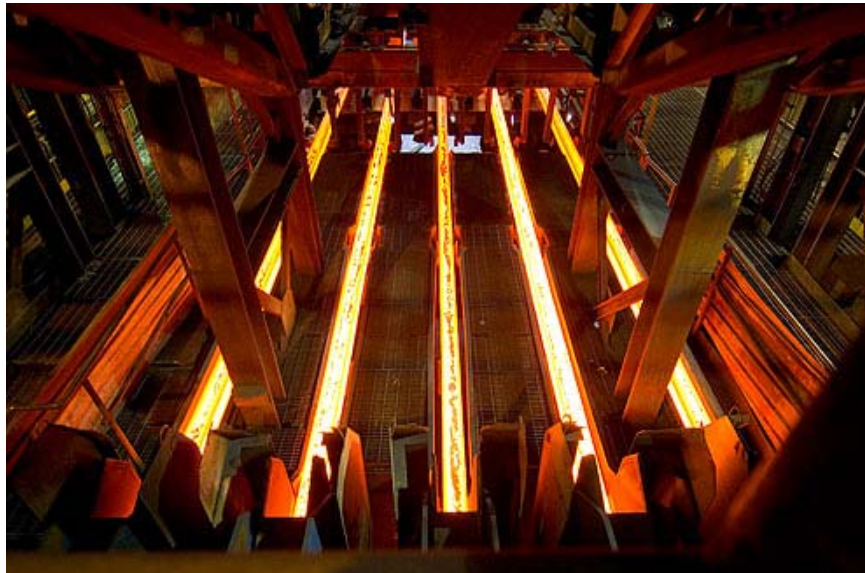


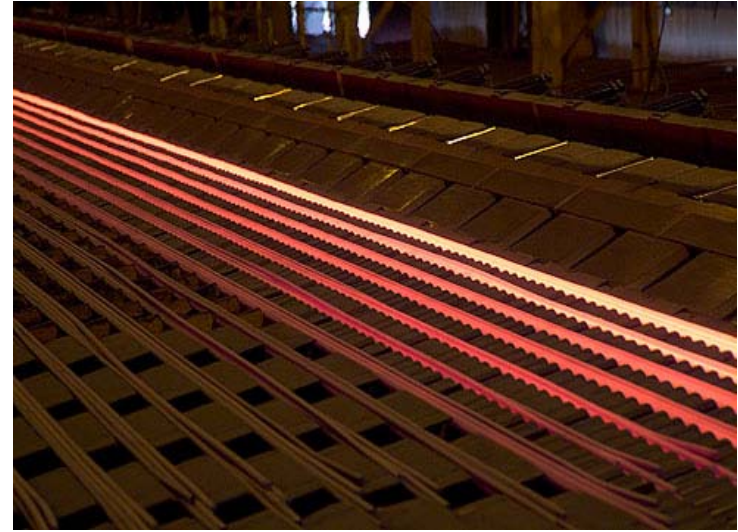
1937 AERIAL SHOWING THE STEEL ROLLING MILL



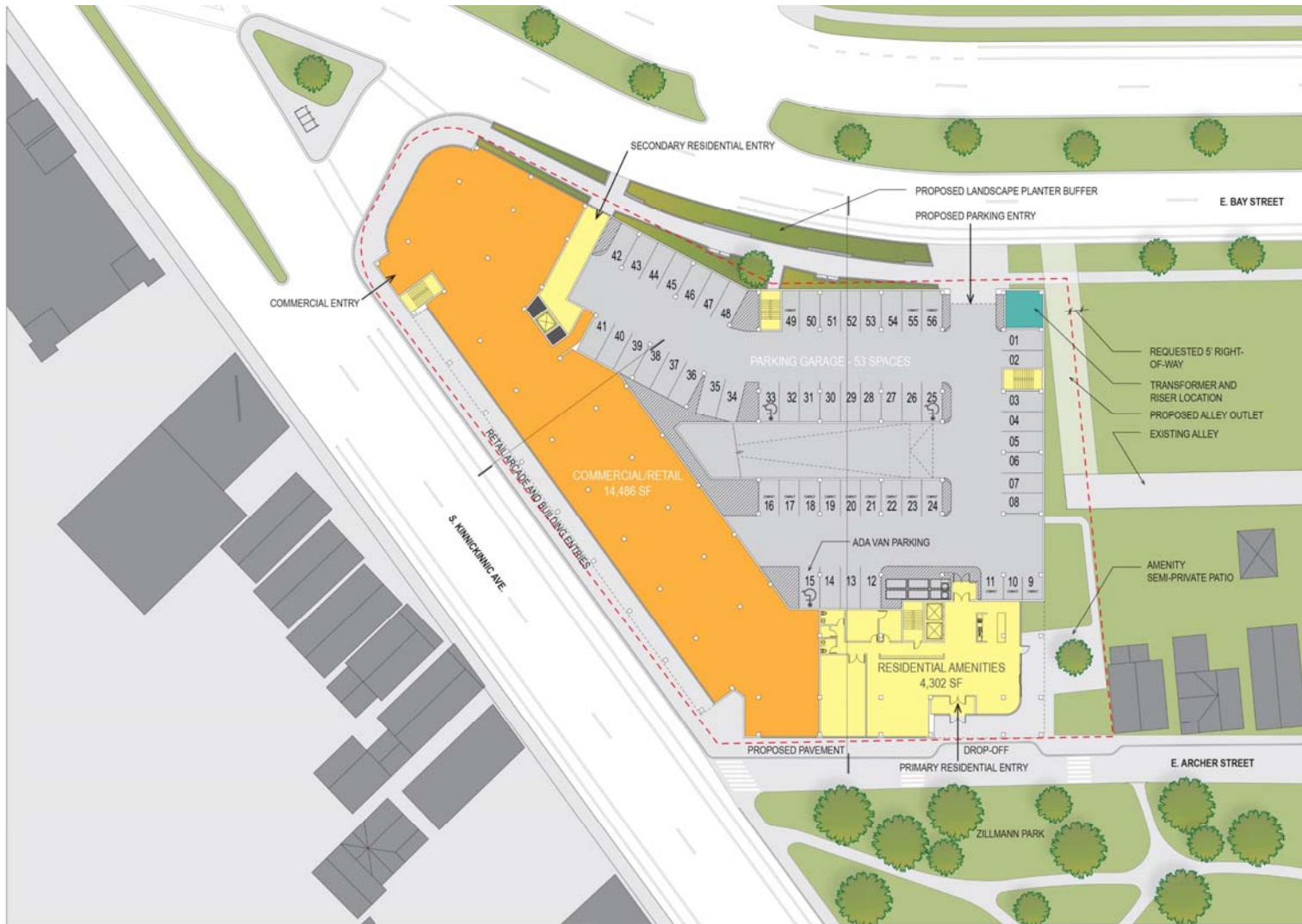
THE ROLLING MILLS AT BAY VIEW.







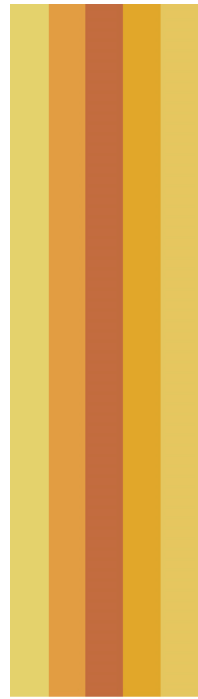




GROUND FLOOR



PARKING LEVEL 2



STEEL MILLS



URBAN PARKS



COLOR / MATERIALS INFORMED BY LOCATION & HISTORY



COMMERCIAL ARCADE ALONG KINNICKINNIC



COMMERCIAL ARCADE ALONG KINNICKINNIC



RESIDENTIAL ENTRY AND COMMUNITY PATIO



VIEW ALONG BAY STREET



ENTRIES AND LANDSCAPING ON BAY STREET



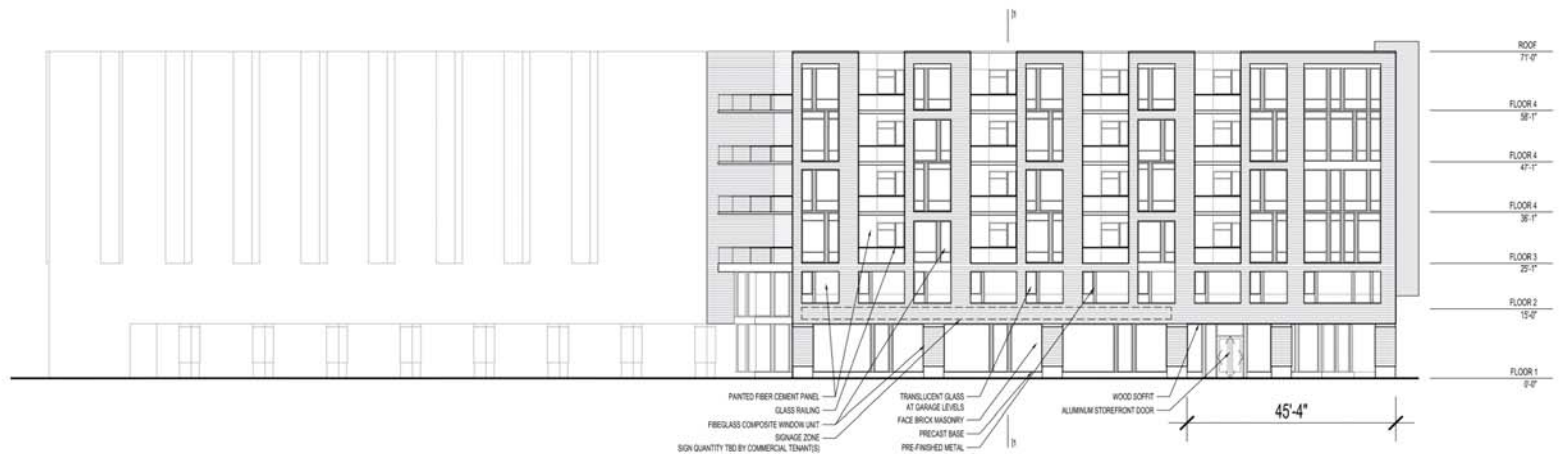
THE INTERSECTION AT KK AND BAY STREET



THE GATEWAY TO BAY VIEW



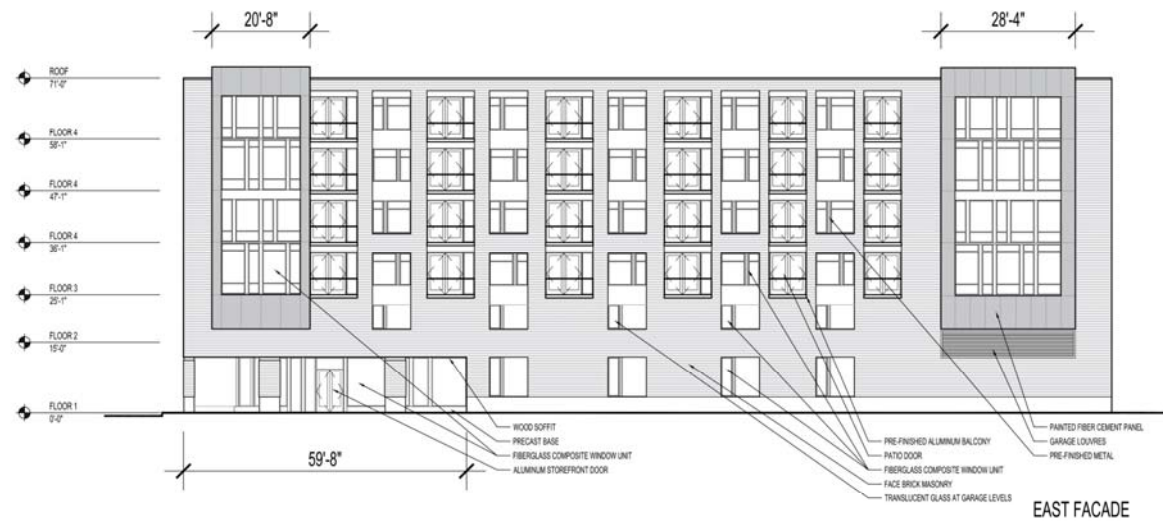
S. KINNICKINNIC AVE FACADE - NORTH



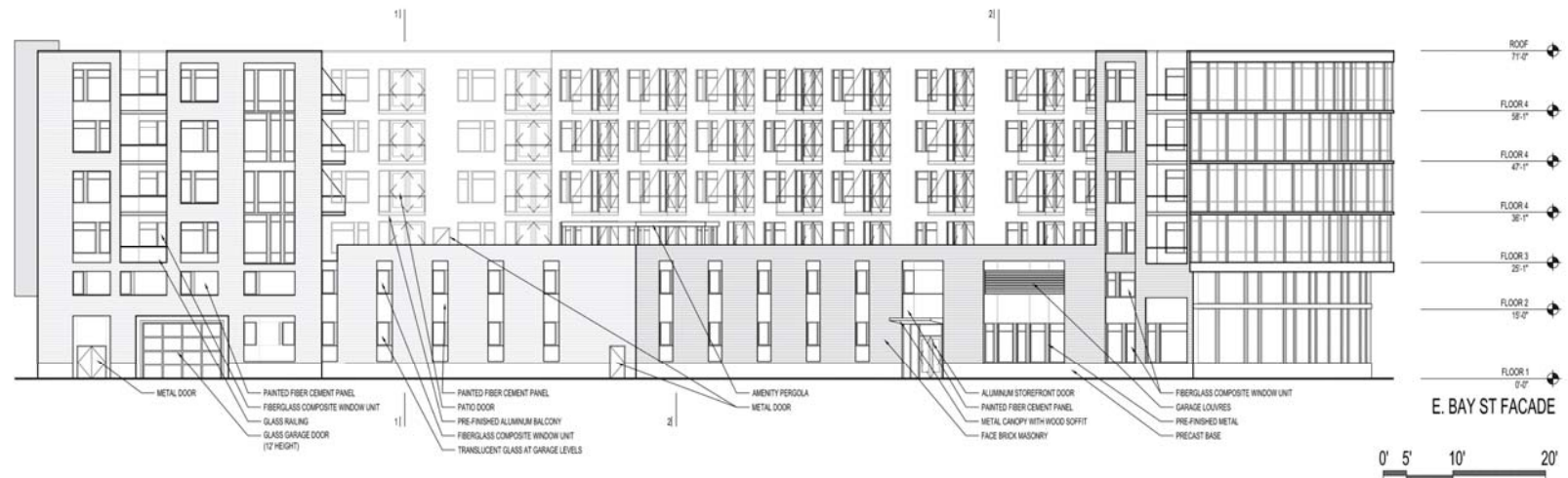
S. KINNICKINNIC AVE FACADE - SOUTH



BUILDING ELEVATIONS



EAST FACADE



E. BAY ST FACADE



BUILDING ELEVATIONS