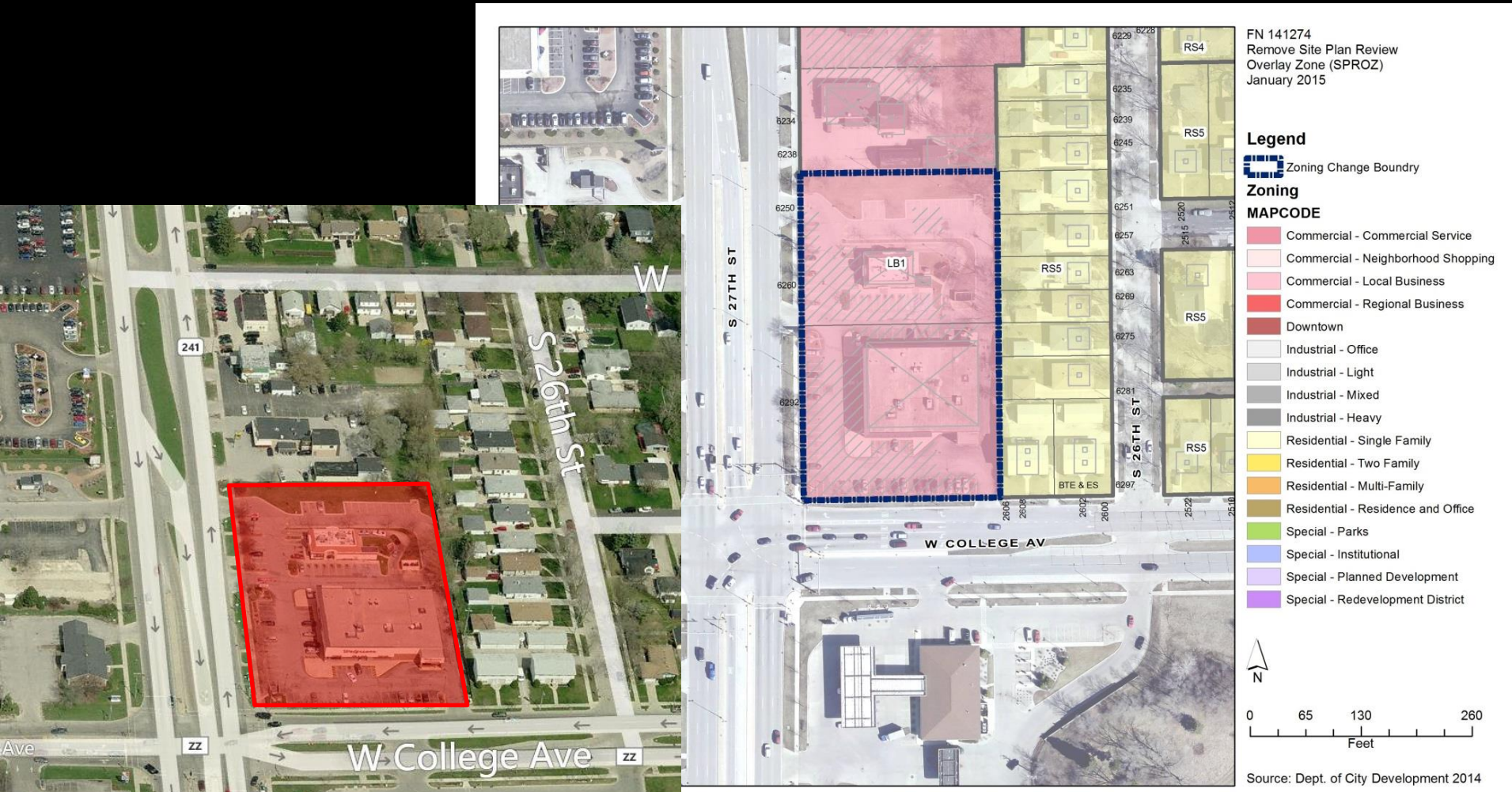
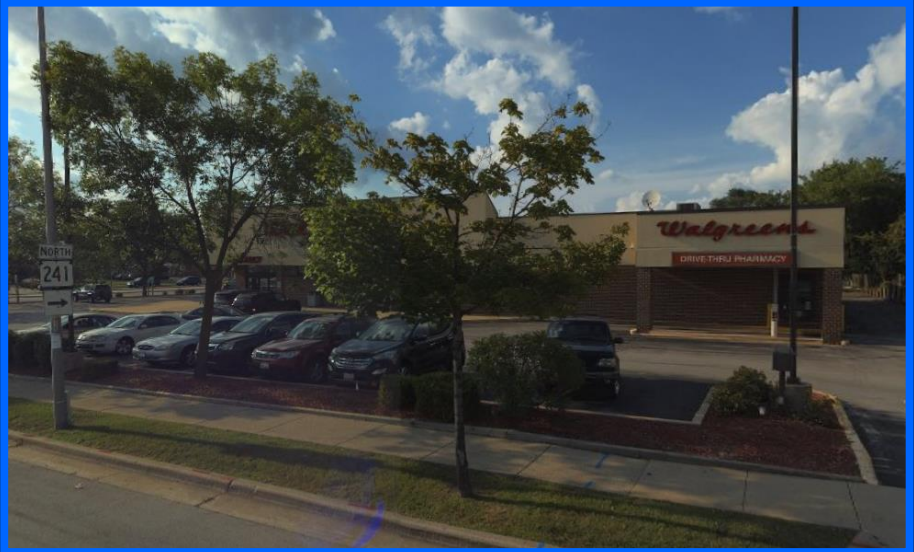


File Nos. 141274 and 141236. An ordinance removing a Site Plan Review Overlay Zone located on the northeast corner of South 27th Street and West College Avenue, in the 13th Aldermanic District and a resolution rescinding Common Council File Numbers 912098 and 921132, resolutions relating to design guidelines for the Site Plan Review Overlay District on lands located northeast of the intersection of South 27th Street and West College Avenue.





File Nos. 141274 and 141236. Site Context Photos.



View of Site from W College Ave, looking northwest



View of Site from S 27<sup>th</sup> St. looking southwest



View of Site from S. 27<sup>th</sup> St. and W College Ave

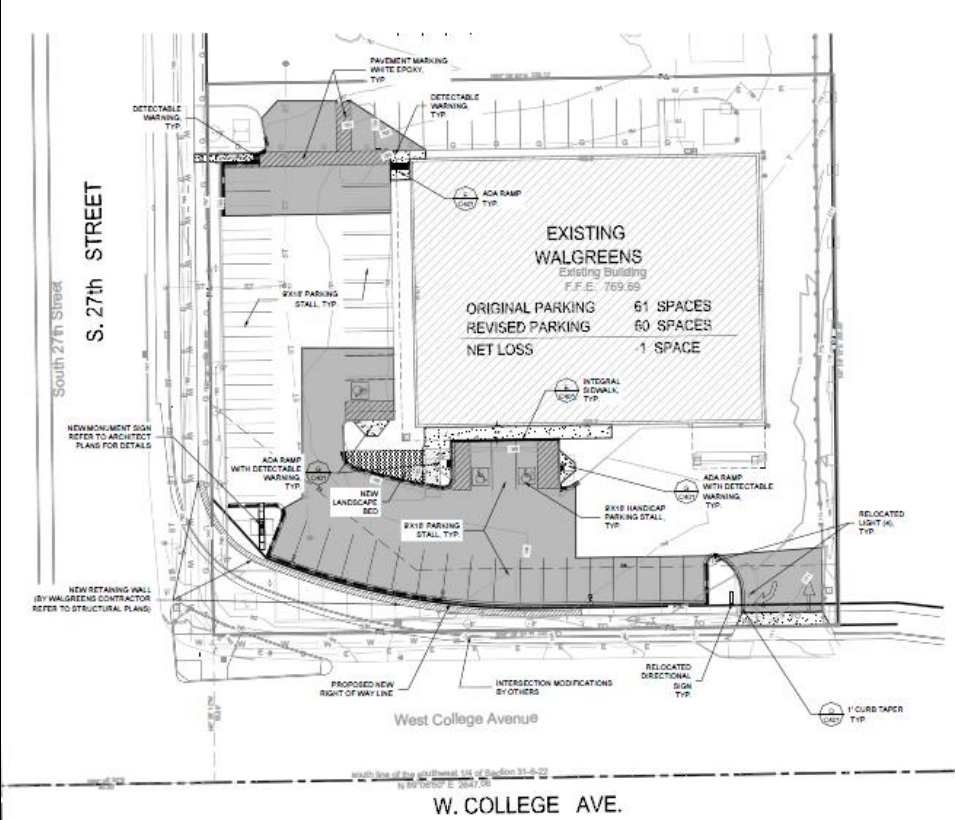
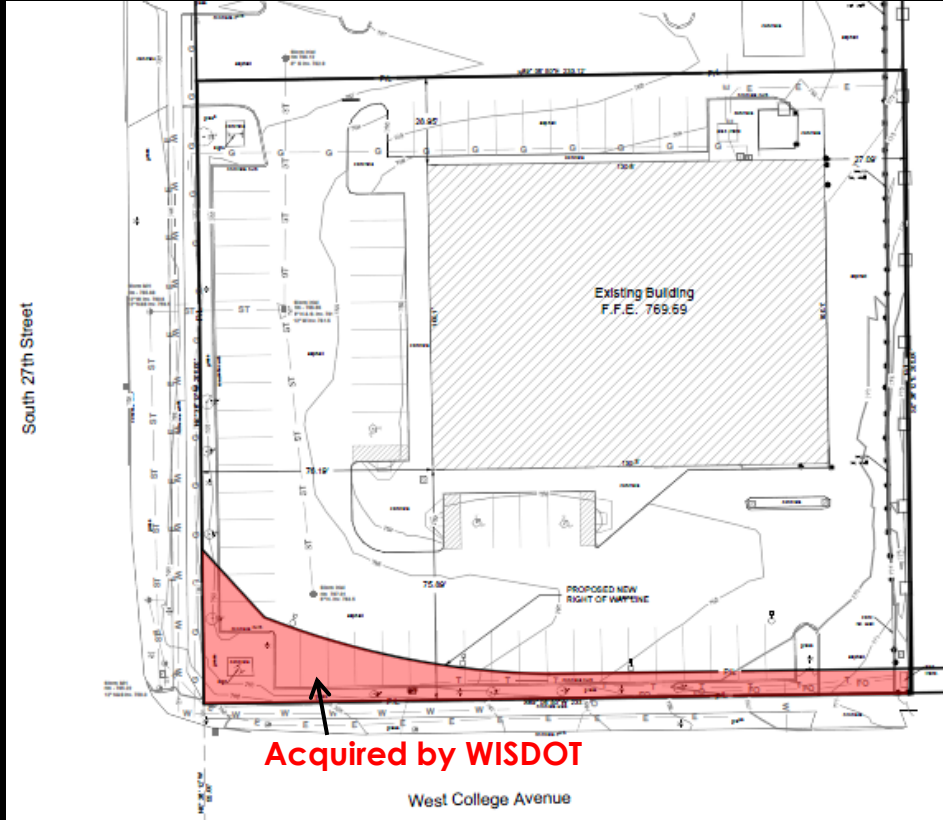


File Nos. 141274 and 141236.  
Existing and New Conditions.



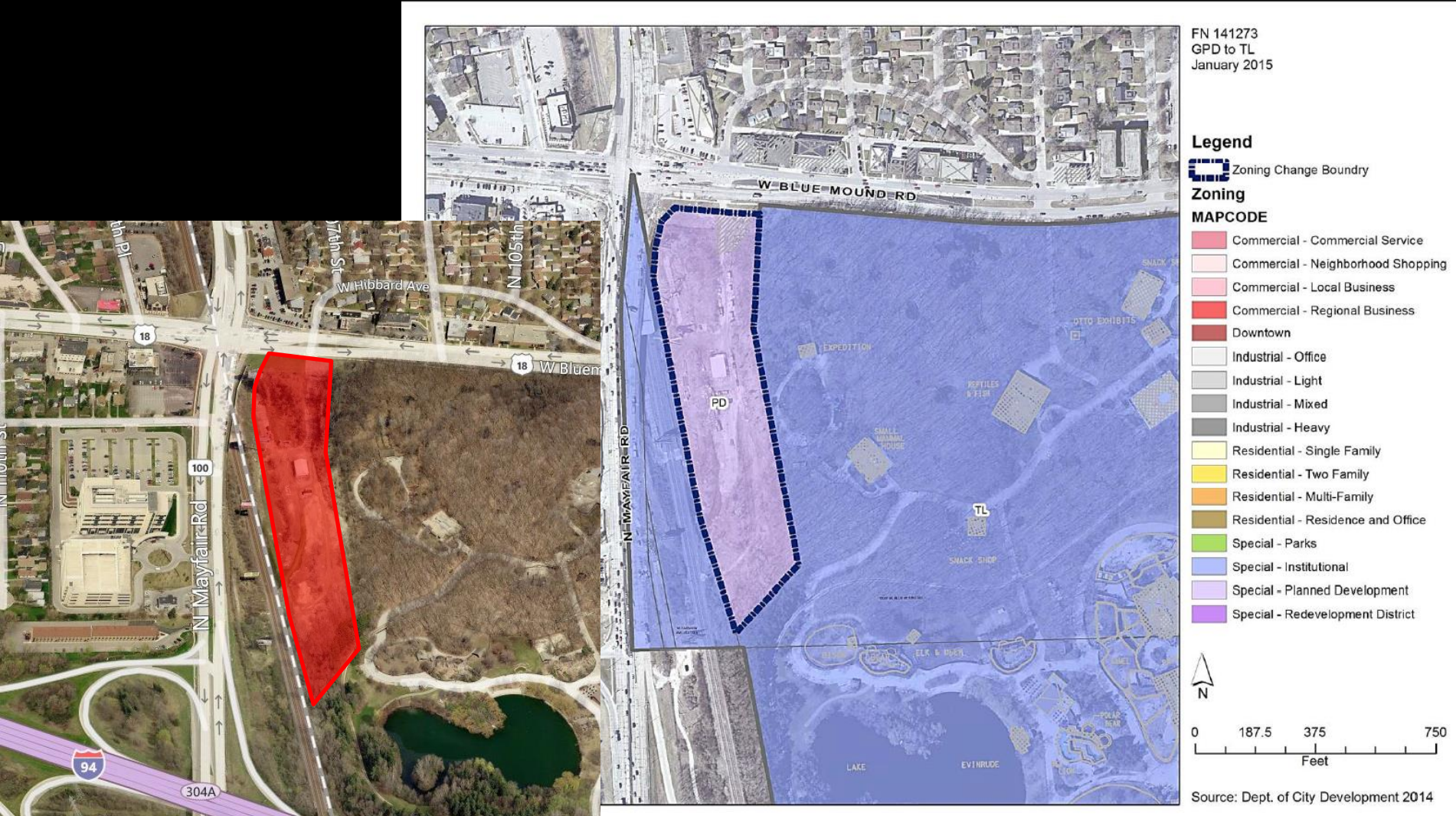
Existing Condition

New Condition with Right-Turn Bypass





File No. 141273. An ordinance relating to the change in zoning from a General Planned Development, known as the Milwaukee County Zoo, to Institutional on land located at 10733 West Bluemound Road, on the south side of West Bluemound Road, east of North Mayfair Road, in the 10<sup>th</sup> Aldermanic District.







# West Entry

## Milwaukee County Zoo

Zoning Change Presentation  
January 26, 2015



















# Milwaukee County Zoo

10001 W. Blue Mound Road  
Milwaukee, WI 53226

milwaukeezoo.org  
414.771.3040



Parking Lot

Parking Lot

West Entrance

Blue Mound Rd.

Walk-in Entrance

Drive-in Entrance

Exit

Zoolet Conference Center

New Freeway

Zebra Parking Lot

ENTRANCE

Giraffe Parking Lot

East Parking Lot

Briggs & Stratton Big Backyard at Zoo Terrace

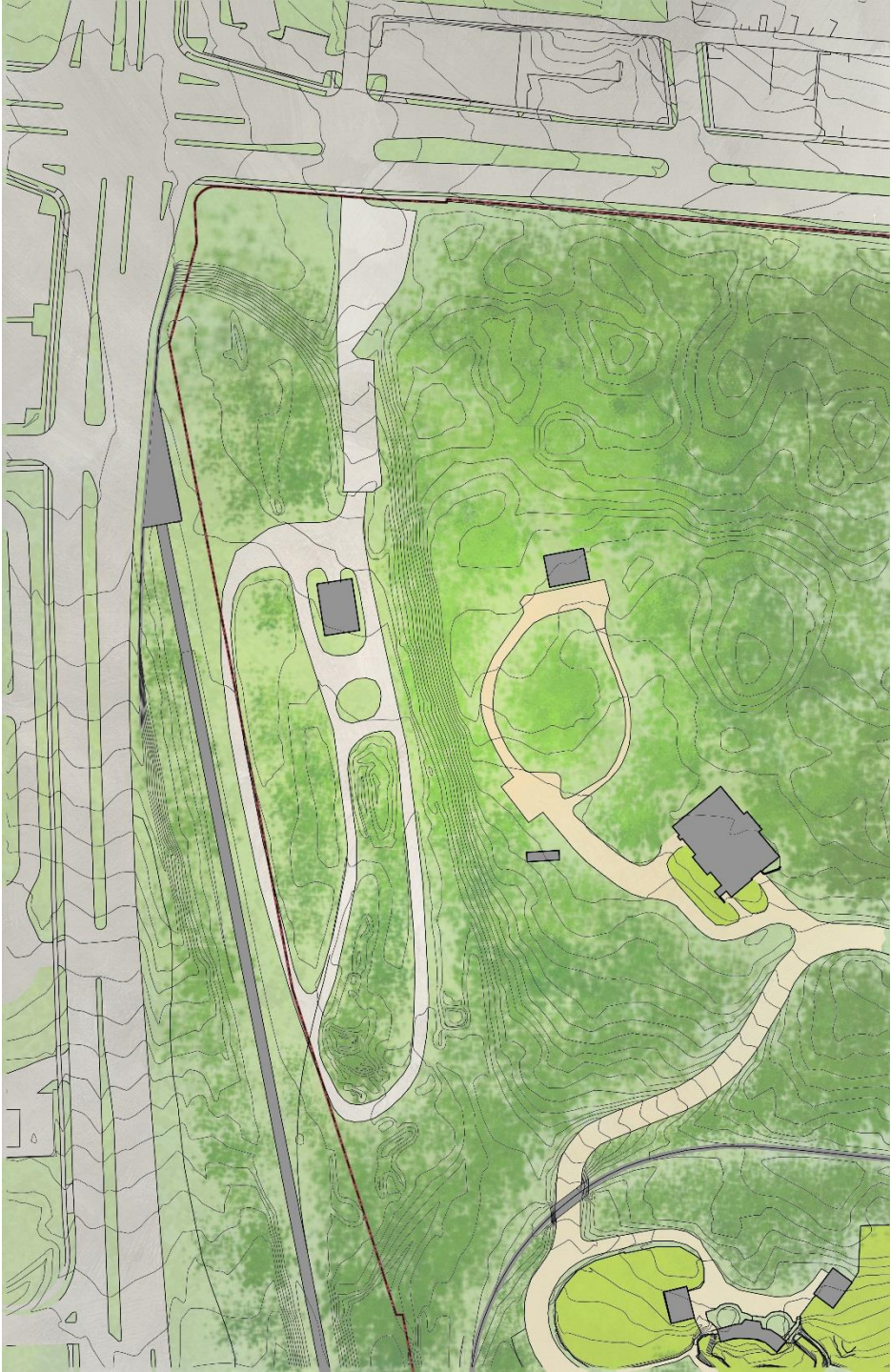
Elephant Parking Lot

Lion Parking Lot

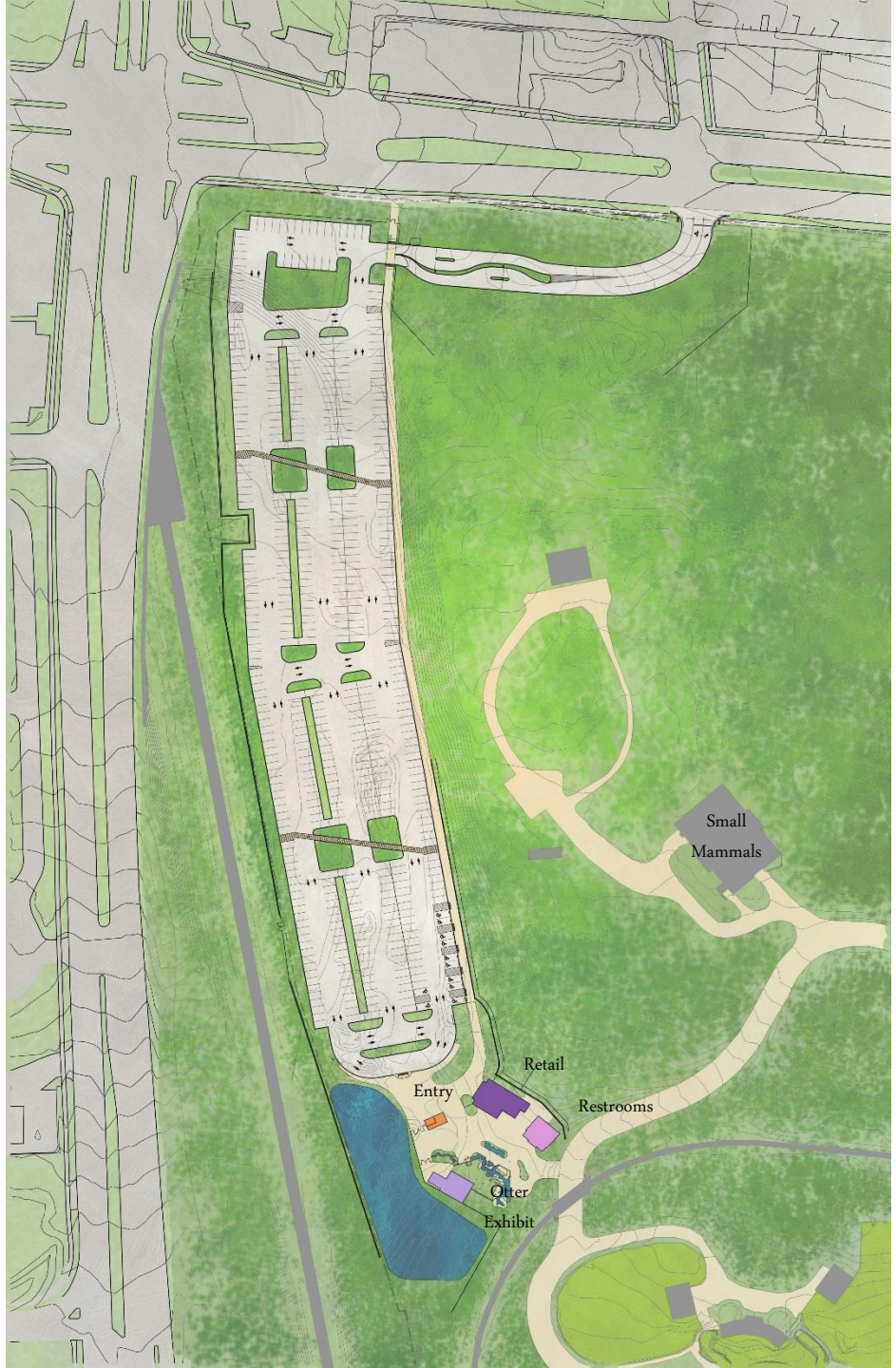
New Freeway











Entry

Retail

Restrooms

Otter Exhibit

Small Mammals

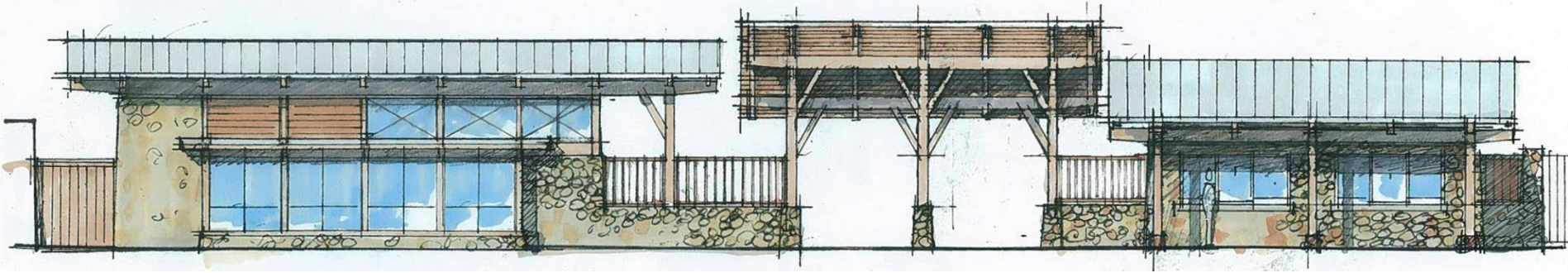


# West Entry *Bluemound Access*

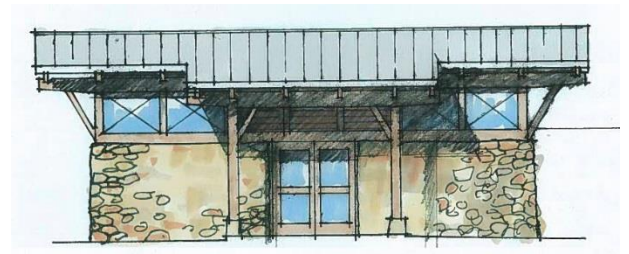




# West Entry *Entrance Gateway and Plaza*



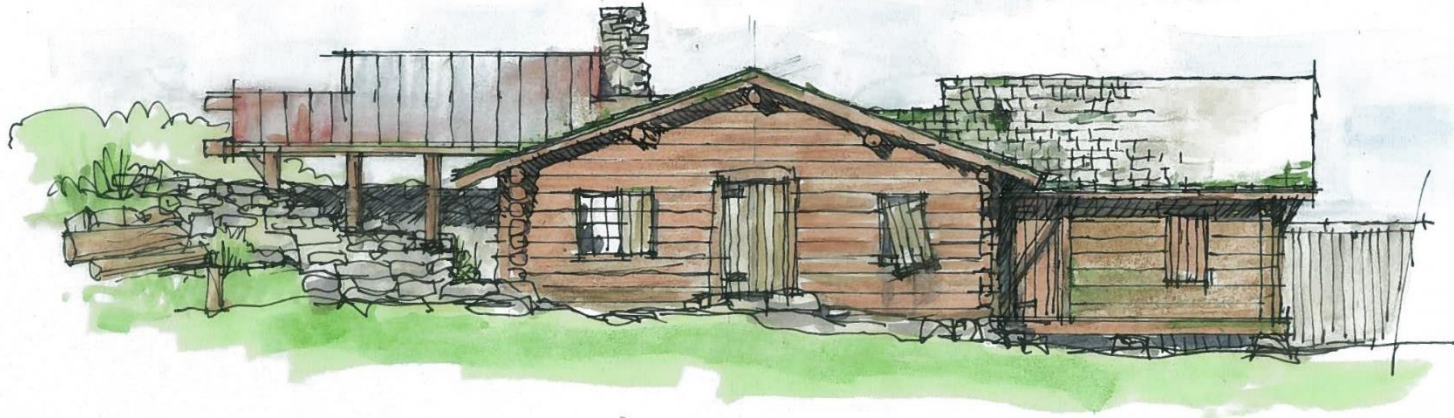
View from parking – Retail, Entrance Gateway, Ticketing



View from plaza – Retail, Restrooms

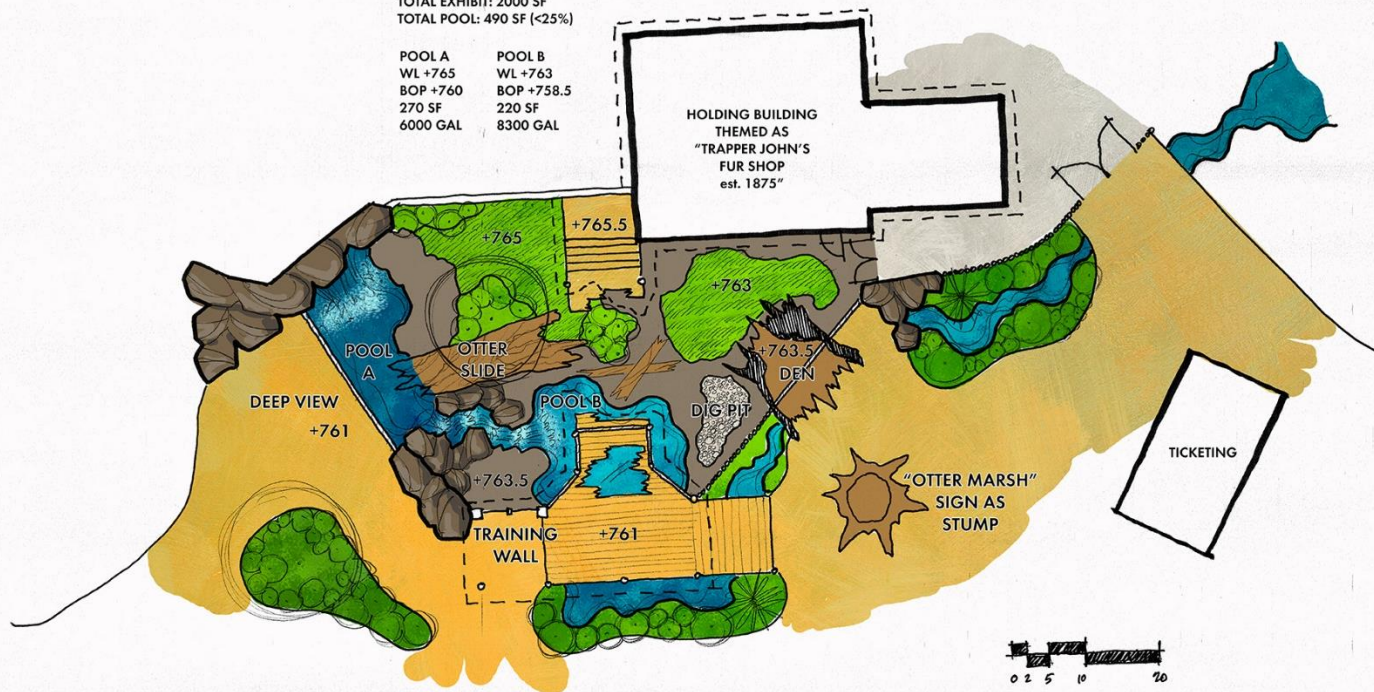


# West Entry *Otter Exhibit*



TOTAL EXHIBIT: 2000 SF  
TOTAL POOL: 490 SF (<25%)

POOL A	POOL B
WL +765	WL +763
BOP +760	BOP +758.5
270 SF	220 SF
6000 GAL	8300 GAL





# Milwaukee County Zoo

10001 W. Blue Mound Road  
Milwaukee, WI 53226

milwaukeezoo.org  
414.771.3040



Parking Lot

Parking Lot

West Entrance

Blue Mound Rd.

Walk-in Entrance

Drive-in Entrance

Exit

Zoolet Conference Center

New Freeway

Zebra Parking Lot

ENTRANCE

Giraffe Parking Lot

East Parking Lot

Briggs & Stratton Big Backyard at Zoo Terrace

Elephant Parking Lot

Lion Parking Lot

New Freeway

