



DEER DISTRICT LLC

1543 N. 2nd Street | 6th Floor | Milwaukee, WI 53212 | 414.227.0500



DEER DISTRICT ARENA DEVELOPMENT

Inclusion through March 31, 2018

Table of Contents

3	Letter from MKE Bucks President
4 - 6	Executive Summary
7	Outreach
8 - 9	Project Partners
10	Deer District Inclusion Requirements
11 - 15	Professional Services
16 - 27	Construction Services
28 - 61	RPP Inclusion
62	RPP By Aldermanic Districts

Prepared by
Prism Technical Management & Marketing Services, LLC
in conjunction with Cross Management Services, Inc.

Cover Photo: Electrician preparing installation of lighting in WESC.



Photo of Peter Feigin on WESC site.

Letter from MKE Bucks President: Peter Feigin



The building of the Wisconsin Entertainment and Sports Center (WESC) and the surrounding 30-acre district is a realization of the commitment Sen. Herb Kohl and our owners made three years ago to Bucks fans and the entire community to keep the team in Wisconsin and help revitalize downtown Milwaukee. We are incredibly thankful

for all the hard work that went into this historic public-private partnership from the Wisconsin Center District, elected officials and community leaders, and are amazed by the progress that has been made in the past year. The new arena's construction has passed the 75% completion mark and has been fully enclosed and heated. Inside work continues on the arena bowl, the audiovisual systems, sports lighting and ribbon/LED boards.

We want the WESC to be the heart of entertainment, community engagement, and neighborhood revitalization. This is not just about Milwaukee Bucks basketball. It is about seizing an opportunity to evolve and create access to world class sports, music and family-centric entertainment that ignites progression in downtown Milwaukee, the community at large, and Wisconsin as a whole. Students from Bradley Tech continue to participate in the TechTerns program with Mortenson and Eppstein Uhen Architects, installing seats in the arena as part of a year-long, real-life learning lab and career pathway exploration program.

Upon completion, the 30-acre district surrounding the arena will be the largest development embarked on in downtown Milwaukee and the home for some of the best sports and entertainment in the world. With this in mind, we are intentional about our efforts to address, meet and exceed diversity and inclusion targets and engage the community, which we have done in the first and second year of construction. We will make a real difference as we build the future.

**Peter Feigin, President
Milwaukee Bucks**

Deer District : Executive Summary

Deer District LLC, along with Developer's Representative, ICON Venue Group ("ICON"), and Inclusion Monitors, Cross Management Services, Inc. ("CMSI") and Prism Technical Management & Marketing Services, LLC ("Prism Technical" or "Prism"), are dedicated to ensuring the projects are successful and meet or exceed the goals described herein.

This report provides information on the inclusion achieved for professional services, construction, and Residents Preference Program on the WESC, 5th Street Parking Structure, and Public Plaza ("the Projects") through March 31, 2018.

Through March 31, 2018, the Projects expect to award contracts valued at \$5,511,321 or 21.4% of professional services cost subject to inclusion and \$90,581,192 or 33.7% of the construction cost subject to inclusion and Milwaukee RPP Workers have performed 42.1% of the construction hours.

The Inclusion Requirements were established in the Human Resources ("HR") Agreement with the City of Milwaukee. The HR Agreement applies to the Projects and requires 18% Small Business Enterprise ("SBE")¹ professional services inclusion, 25% SBE construction inclusion, 40% City of Milwaukee Residents Preference Program ("RPP") inclusion, and payment of City of Milwaukee prescribed living wages.²

Worker priming WESC floors.



¹ SBE includes Small Business Enterprises ("SBE") certified by the City of Milwaukee, Disadvantaged Business Enterprises ("DBE") certified by a member of the Wisconsin Unified Certification Program, a Small Disadvantaged Business ("SDB") as designated by the Small Business Administration, and an 8(a) certified by the Small Business Administration.

² The 5th Street Parking Structure is also subject to payment of prevailing wages by virtue of its location in the Park East and the development agreement with Milwaukee County regarding this site.

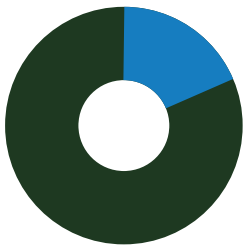
Deer District : Executive Summary

Table 1 : Professional Services Inclusion through March 31, 2018

PROJECT	INCLUSION	COST SUBJECT TO INCLUSION	%	INCLUSION PAID TO DATE	TOTAL PAYMENTS	%
Wisconsin Entertainment & Sports Center	\$ 4,364,243	\$ 22,564,093	19.3%	\$ 3,573,314	\$ 21,015,348	17.0%
5th Street Parking Structure	\$ 774,575	\$ 2,203,682	35.1%	\$ 759,829	\$ 2,164,920	35.1%
Public Plaza	\$ 372,503	\$ 1,024,423	36.4%	\$ 304,780	\$ 957,035	31.8%
Total	\$ 5,511,321	\$ 25,792,198	21.4%	\$ 4,637,923	\$ 24,137,303	19.2%

While payments will vary based on project stage, at least 18% of professional service spending will go to SBEs by the time the Projects are completed.

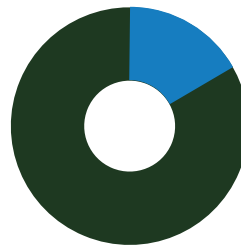
Inclusion Achieved



- **21.4% Inclusion Firm Contracts**
\$5,511,321
- **78.6% Non-Inclusion Firm Contracts**
\$20,280,877

Total Cost Subject to Inclusion
\$25,792,198

Total Payments



- **19.2% Inclusion Firm Payments**
\$4,637,923
- **80.8% Non-Inclusion Firm Payment**
\$19,499,380

Total Payments
\$24,137,303

Worker unloading materials.



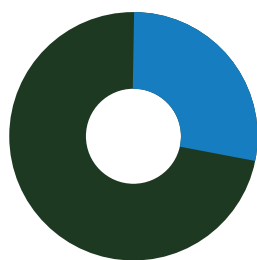
Deer District : Executive Summary

Table 2 - Construction Inclusion through March 31, 2018

PROJECT	INCLUSION	COST SUBJECT TO INCLUSION	%	INCLUSION PAID TO DATE	TOTAL PAYMENTS	%
Wisconsin Entertainment & Sports Center	\$ 78,601,126	\$ 229,276,662	34.3%	\$ 61,716,397	\$166,344,357	37.1%
5th Street Parking Structure	\$ 8,837,119	\$ 26,993,978	32.7%	\$ 8,505,776	\$ 26,993,978	31.5%
Public Plaza	\$ 3,142,947	\$ 12,298,803	25.6%	\$ 686,941	\$ 2,970,102	23.1%
Total	\$ 90,581,192	\$ 268,569,443	33.7%	\$ 70,909,114	\$196,308,437	36.1%

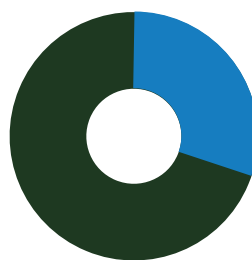
It is projected that SBE inclusion will exceed the 25% SBE goal by completion of the Projects.

Inclusion Achieved



- **33.7% Inclusion Firm Contracts**
\$90,581,192
 - **66.3% Non-Inclusion Firm Contracts**
\$177,988,251
- Total Cost Subject to Inclusion**
\$268,569,443

Total Payments

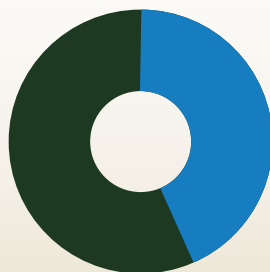


- **36.1% Inclusion Firm Payments**
\$70,909,114
 - **63.9% Non-Inclusion Firm Payment**
\$125,399,323
- Total Payments**
\$196,308,437

Table 3 - RPP Inclusion through March 31, 2018

PROJECT	TOTAL HOURS	TOTAL RPP HOURS	RPP REQUIREMENT	RPP % TO DATE
Wisconsin Entertainment and Sports Center	1,420,889.6	602,058.6	40.0%	42.4%
5th Street Parking Structure	164,738.0	65,855.8	40.0%	40.0%
Public Plaza	12,843.3	5,148.4	40.0%	40.1%
Total	1,598,470.8	673,062.7	40.0%	42.1%

Total Residents Preference Program (RPP) Inclusion



- **42.1% RPP Participation**
673,062.7 Total RPP Hours
 - **57.9% Non-RPP Participation**
925,408.1 Total Non-RPP Hours
- 1,598,470.8 Total Workforce Hours

BUCKS CARE: TECHTERNS

Eppstein Uhen Architects and Mortenson Construction Company partnered with Milwaukee Public Schools' Bradley Tech High School to give students interested in building design and construction a hands-on learning experience at the new Milwaukee Bucks Arena. Eighteen TechTerns students were able to bring their curriculum-based learning to a real-life experience.

Bradley Tech High School juniors and seniors started their first session with a virtual reality activity, a 3D model assembly of the Arena as well as reviewing architectural plans with Mortenson's design team. These sessions continued throughout the students' school year including four more sessions that exposed the students to electrical fitting, enclosure systems, seat installation, landscaping/sketching designs as well a chance to tape and mud drywall.

The students ended their program by meeting Bucks President Peter Feigin and several Bucks players, attending a Bucks game and lastly a graduation ceremony for the TechTerns where they all received commemorative Bucks gear.

TechTerns were also involved in the construction development for the Froedtert & the Medical College of Wisconsin Sports Science Center. In an interview during the seat installation of the new Arena, Debora, a student of the Bradley High TechTerns program, said what she likes most about the program is that "[w]e get a head start and we get to observe every single trade and everything that all the workers do, and how their strategies are used in different ways in order to make a big project like this come together; it's a great opportunity."



Photos from top to bottom: Bradley Tech High School TechTerns visited the Froedtert & The Medical College of Wisconsin Sports Science Center; Students toured the MATC campus; TechTerns helped lay boards into the practice courts.

Project Partners

PROJECT MANAGEMENT TEAM



ICON Venue Group is the leading Owner's Representative and project management firm in the sports, entertainment, and public assembly industry with a portfolio of many of the most successful venues in the world. ICON provides a comprehensive spectrum of facility development services required to guide a new facility project from its initial conception through planning, design, construction and opening to ensure years of successful operation for both public and private sector clients in the USA, Canada, Europe and Asia. ICON has managed the development of home venues for NFL, NBA, NHL, MLB MLS, MLL, AFL, CHL, NBDL, DEL and BBL franchises totaling over \$6 billion.



Cross Management Services, Inc. (CMSI), a project management consulting firm, provides business management, public relations, research, and planning services. With a passion for excellence, ethical conduct, and knowledge, CMSI achieves high-quality results and consistently meets its commitments to its clients. CMSI specializes in coordinating and monitoring supplier and workforce diversity goals for developers, contractors, corporations, and governmental entities on construction projects.



Prism Technical is a multifaceted consulting firm that specializes in project and construction management, public relations and outreach, business training and corporate workforce diversity and inclusion. Based in Milwaukee, Prism started in 1995 working to ensure the diversity of workers and legitimate contracting practices on major construction projects funded by tax payers. This has allowed Prism to advise many forward thinking companies and governmental entities on matters of process, management, knowledge transfer and strategy. Prism has had unprecedented success on Wisconsin's most prestigious and challenging projects and has accumulated an unparalleled catalog of experiences working with small, women and minority owned businesses and underemployed workers. The firm opened a second office in St. Louis, MO in 2016.

ARCHITECTS & CONSTRUCTION MANAGERS



American Design Inc. is a twenty-year old firm whose experienced management team provides a full range of architectural services to satisfy its clients. American Design Inc. has the architectural background necessary to work with clients through each phase of the design process. Their design experiences includes residential, educational, commercial office, retail and public buildings.



eppstein uhen : architects

Eppstein Uhen Architects, Inc. (EUA) is an architecture firm located in Milwaukee (headquarters), Madison and Des Moines. More than 150 EUA team members demonstrate unparalleled commitment to the markets, communities and clients it serves. EUA works closely with clients and partners to create environments that exceed expectations while elevating people's potential. EUA, an 108 year-old firm specializes in workplace, healthcare, learning, living and entertainment environments.

Project Partners

Findorff

J. H. Findorff & Son Inc. is one of the Midwest's leading builders with offices in Madison and Milwaukee. For over 125 years, Findorff has continued to position itself as a dependable and reputable Company dedicated to excellence. Talented staff, a passion for innovation, and a focus on technology has helped secure our status as a leader in the construction industry. With over 700 employees currently, Findorff proudly acknowledges receipt of over 100 awards and recognition, for both commitment to quality construction and civic initiatives.

GRAEF

Established in 1961, GRAEF-USA Inc. has grown to become a leading U.S. consulting firm, as ranked by Engineering News Record Magazine. Their technical personnel, located in multiple offices in Wisconsin, Illinois, and Florida, represent a comprehensive resource with diverse technical expertise able to address all phases of analysis, design, and construction. From public infrastructure to environmental issues, industry to communications, governmental facilities to healthcare, education and retail, from and for numerous other project categories, GRAEF has positioned itself to serve their clients in unique and innovative ways.

HNTB

HNTB Corporation is an employee-owned infrastructure solutions firm. With more than a century of service, HNTB understands the life cycle of infrastructure and addresses clients' most complex technical, financial and operational challenges. Professionals nationwide deliver a full range of infrastructure-related services, including award-winning planning, design, program management and construction management.



Hunzinger Construction Company is a fourth generation, family-owned company that has continuously served the construction industry in Southeast Wisconsin since 1907. Hunzinger consists of construction managers, general contractors and design/builders who have built and managed some of Wisconsin's most notable and challenging projects. Hunzinger has received numerous awards for outstanding project management, safety, engineering, concrete work, and core values, including the Marquette University Family Business Excellence Award for Core Values and being recognized as Employer of Choice by Wisconsin Builder magazine over multiple years.



M. A. Mortenson Company is the 2nd largest sport builder in the United States with over 160 sports and entertainment projects. Founded in 1954, Mortenson is a U.S.-based, family-owned company. As one of the nation's top builders and developers, Mortenson provides a complete range of services, including planning, program management, pre-construction, general contracting, construction management, design-build, and turn-key development. Mortenson has offices in Chicago, Denver, Madison, Milwaukee, Minneapolis, Phoenix, Portland, and Seattle with international operations in Canada.

POPULOUS

Since inception in 1983, Populous, Inc. has grown into the world's leading design firm dedicated exclusively to creating environments that draw people and communities together for unforgettable experiences. The firm has completed more than 1,000 projects around the globe with construction value exceeding \$20 billion. Populous has worked with 24 Major League Baseball franchises, 30 NFL franchises, 80 professional and civic arena clients, 40 global soccer and rugby teams, 120 universities, 40 convention center clients, 29 equestrian clients and has planned more than 30 major worldwide events.

RINKA|CHUNG

Rinka Chung Architecture, Inc. is a full service award-winning firm existing to serve progressive and visionary clients. They are differentiated by the ability to deliver inspiring design solutions that are both aesthetically elegant and functionally efficient. Rinka Chung places the highest value on people and relationships – both externally and internally.

City of Milwaukee Inclusion Requirements

- 18% Professional Service spending with Disadvantaged Business Enterprise (DBE), Small Business Enterprise (SBE), Small Disadvantaged Business (SDB) and/or 8(a)
- 25% construction spending with Disadvantaged Business Enterprise (DBE), Small Business Enterprise (SBE), Small Disadvantaged Business (SDB) and/or 8(a)
- 40% of the on-site construction hours to be performed by City residents meeting the City of Milwaukee Resident Preference Program (RPP) requirements as set forth in the HR Agreement
- Living wages must be paid to each worker performing construction trade labor on the project

Photo: Cement Mason preparing forms for concrete pour.



Profesisonal Services Inclusion



Worker smoothing floor surface.

LONGEVITY IN A CHALLENGING INDUSTRY

Dakota Intertek Corp.

Since its founding in 1994, Dakota Intertek has served as a leading provider of government contracting, site work, demolition, and environmental services to clients across multiple industries. With CEO Wenbin Yuan at the helm, the team of 15 - 30 employees has lent its expertise on major projects across the state, including those at Harley-Davidson, Potawatomi Casino, Bayshore Town Center, Westlawn Gardens, and more. While making their mark in cities across Wisconsin, Dakota Intertek has also expanded its reach beyond state lines, providing services in parts of Illinois, Indiana, and Minnesota as well.

Today, Dakota Intertek now joins the list of highly talented Minority Business Enterprise (MBE) and Disadvantaged Business Enterprise (DBE) firms that have participated in the construction of the 5th Street Parking Structure. For this project, the team performed sampling and testing for concrete structures, in addition to material testing and material collection. Wenbin shares his excitement in contributing to the construction of the parking structure, saying, "We're really proud to provide some of our services to such a large project. It's great to be a part of it!"

Dakota Intertek continues to maintain a strong reputation within their industry by prioritizing long-term business relations development and the retention of experienced staff. In fact, as Wenbin mentions, "Most people who join our company stay with us for 15 years or more on average." This level of experience and loyalty has enabled the firm to become highly capable and proficient in important areas including the handling of complicated projects and paperwork. "You have to understand the paperwork that is required, especially for government-related work. If we have a small contractor working under us, we always have to help them with the paperwork."

Having been successful in a challenging industry for over 24 years, Wenbin has developed a set of rules to live and work by to ensure longevity. First and foremost, "Be humble, because it's not all about becoming rich, but about sharing with your employees, subcontractors, and most of all, your clients. We're here to gain valuable experience and to help people in need of employment and our services." This sentiment is one that he has passed on to his children, instilling in them the motivation to work hard and maintain a realistic view of the world beyond money. Another rule, try to build long-term relationships with primes or partners. This is key to securing new projects and positioning your firm as a leader amongst the competition.



Wenbin Yuan
CEO of Dakota Intertek Corp.

"We're really proud to provide some of our services to such a large project. It's great to be a part of it!"

Wisconsin Entertainment and Sports Center: Professional Services Inclusion

Table 4 - Wisconsin Entertainment and Sports Center: Professional Services Inclusion through March 31, 2018

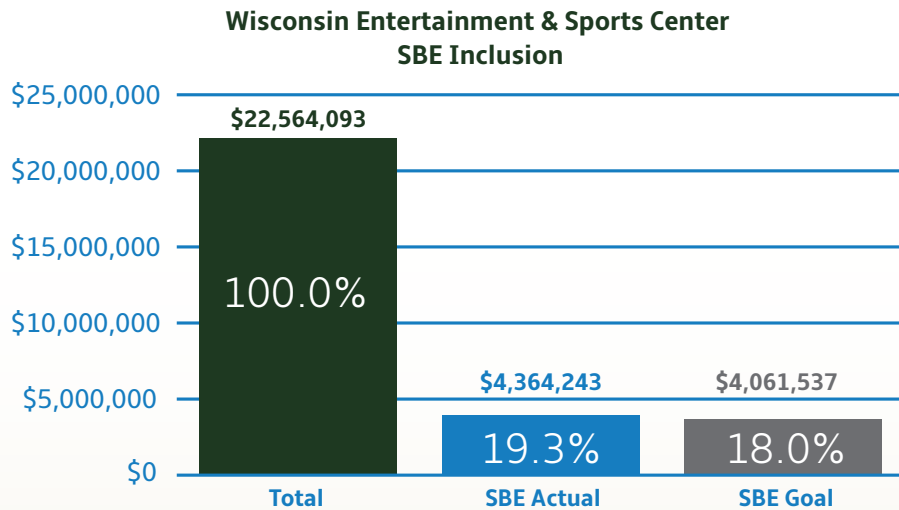
SBE, DBE, SDB, or 8(a) FIRMS	SBE, DBE, SDB or 8(a)	SUBCONTRACTOR TO	SERVICE PERFORMED	CONTRACT AMOUNT	AMOUNT PAID THROUGH 3/31/18
American Design, Inc.	S/DBE	Eppstein Uhen Architects, Inc.	Architectural - Main & Upper Concourse	\$ 250,000	\$ 250,000
American Design, Inc.	S/DBE	GRAEF-USA Inc.	Architectural - Skywalk	\$ 50,587	\$ 50,298
American Design, Inc.	S/DBE	Eppstein Uhen Architects, Inc.	Construction Administration	\$ 90,675	\$ 90,675
Barrientos Design & Consulting, Inc.	DBE	Eppstein Uhen Architects, Inc.	Architecture - Event Level	\$ 319,500	\$ 319,500
Capitol Lien Records & Research, Inc.	DBE	Terracon Consultants, Inc.	Title Search - Phase I - Block 1	\$ 3,280	\$ 3,280
Capitol Lien Records & Research, Inc.	DBE	Terracon Consultants, Inc.	Title Search - Phase I - Block 2	\$ 1,688	\$ 1,688
Capitol Lien Records & Research, Inc.	DBE	Terracon Consultants, Inc.	Title Search - Phase I - Block 4	\$ 425	\$ 425
Capitol Lien Records & Research, Inc.	DBE	Terracon Consultants, Inc.	Title Search - Phase I - Block 5	\$ 2,875	\$ 2,875
Coastwise Fireguard Inc.	DBE	M-E Engineers, Inc.	Fire Sprinkler	\$ 100,000	\$ 86,817
Copy N More, Inc.	SBE	Populous, Inc.	Printing	\$ 70,000	\$ 52,175
Cotter Consulting, Inc.	DBE	M.A. Mortenson Company	Construction Management	\$ 397,900	\$ 327,943
Cross Management Services, Inc.	S/DBE	Deer District LLC	Inclusion Monitor - Business	\$ 314,100	\$ 188,312
Gestra Engineering, Inc.	S/DBE	Terracon Consultants, Inc.	Drilling Services - Geotech	\$ 103,857	\$ 103,857
Gestra Engineering, Inc.	S/DBE	Terracon Consultants, Inc.	Drilling Services	\$ 5,186	\$ 5,186
Himalayan Consultants, LLC	S/DBE	Professional Service Industries, Inc.	Construction Obs & Testing	\$ 67,038	\$ 67,038
IBC Engineering Services, Inc.	S/DBE	M-E Engineers, Inc.	MEP	\$ 385,000	\$ 356,300
JCP Construction LLC	S/DBE	M.A. Mortenson Company	Construction Management	\$ 320,000	\$ 240,624
M & E Architects+Engineers, LLC	DBE	Eppstein Uhen Architects, Inc.	Architecture - Vertical Circulation	\$ 126,000	\$ 126,000
Martinsek & Associates	SBE	Deer District LLC	Workforce Recruitment Video	\$ 15,740	\$ 15,740
P3 Development Group LLC	S/DBE	M.A. Mortenson Company	Outreach	\$ 38,763	\$ 38,763
Prism Technical Management & Marketing, LLC	S/DBE	Deer District LLC	Inclusion Monitor - Workforce	\$ 575,500	\$ 290,787
Thunderbird Engineering, Inc.	S/DBE	M-E Engineers, Inc.	Commissioning	\$ 100,000	\$ 0
White Water Associates, Inc.	DBE	Terracon Consultants, Inc.	Laboratory Services - Block 1	\$ 24,261	\$ 24,261
White Water Associates, Inc.	DBE	Terracon Consultants, Inc.	Laboratory Services - Block 4	\$ 4,768	\$ 4,768

Table continued on next page

Wisconsin Entertainment and Sports Center: Professional Services Inclusion (Continued)

Table 4 - Wisconsin Entertainment and Sports Center: Professional Services Inclusion through March 31, 2018 - Continued

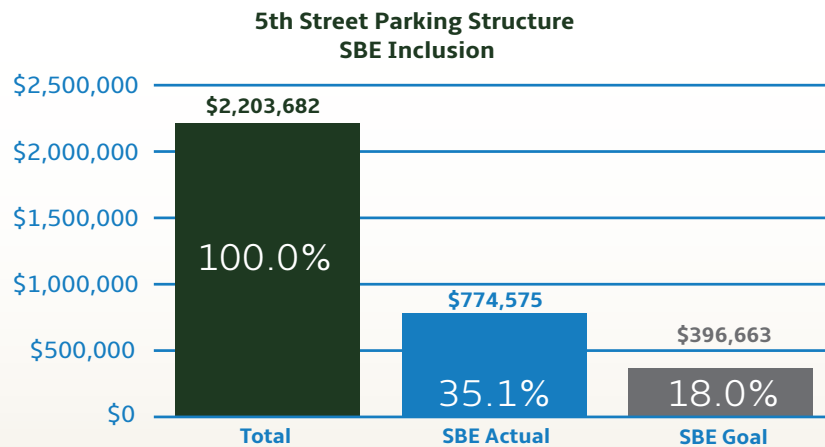
SBE, DBE, SDB, or 8(a) FIRMS	SBE, DBE, SDB or 8(a)	SUBCONTRACTOR TO	SERVICE PERFORMED	CONTRACT AMOUNT	AMOUNT PAID THROUGH 3/31/18
Wrightson, Johnson, Haddon & Williams, Inc.	DBE	Populous, Inc.	Audio/Video Consulting	\$ 361,100	\$ 319,552
ZS, LLC	SBE	HNTB Corporation	Structural Foundation Design	\$ 390,000	\$ 368,950
ZS, LLC	SBE	HNTB Corporation	Building Access Design	\$ 96,000	\$ 88,500
ZS, LLC	SBE	HNTB Corporation	Roof Design	\$ 60,000	\$ 60,000
ZS, LLC	SBE	HNTB Corporation	Envelope Consulting	\$ 90,000	\$ 89,000
TOTAL INCLUSION AND AMOUNT PAID				\$ 4,364,243	\$ 3,573,314
INCLUSION AS A % OF PROFESSIONAL SERVICES COST SUBJECT TO INCLUSION				19.3%	
INCLUSION AS A % OF PROFESSIONAL SERVICES PAYMENTS MADE				17.0%	
PROFESSIONAL SERVICES COST SUBJECT TO INCLUSION				\$ 22,564,093	
TOTAL PROFESSIONAL SERVICES PAYMENTS					\$ 21,015,348



5th Street Parking Structure: Professional Services Inclusion

Table 5 - 5th Street Parking Structure: Professional Services Inclusion through March 31, 2018

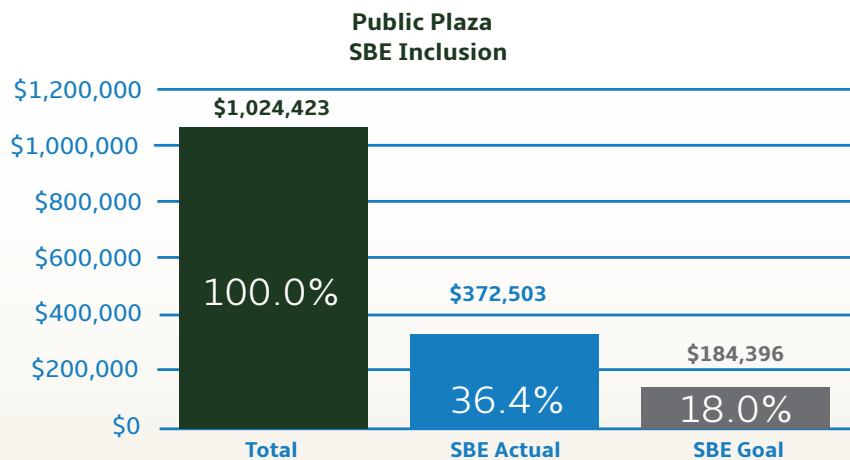
SBE, DBE, SDB, or 8(a) FIRMS	SBE, DBE, SDB or 8(a)	SUBCONTRACTOR TO	SERVICE PERFORMED	CONTRACT AMOUNT	AMOUNT PAID THROUGH 3/31/18
American Design, Inc.	S/DBE	GRAEF-USA Inc.	Architectural - Parking Structure	\$ 360,577	\$ 356,984
American Design, Inc.	S/DBE	GRAEF-USA Inc.	Architectural - Housing	\$ 36,120	\$ 36,120
Capitol Lien Records & Research, Inc.	DBE	Terracon Consultants, Inc.	Title Search - Block 7	\$ 1,150	\$ 1,150
Cross Management Services, Inc.	S/DBE	Deer District LLC	Inclusion Monitor - Business	\$ 101,895	\$ 90,742
Dakota Intertek Corp.	S//DBE	Giles Engineering Associates, Inc.	Materials Testing	\$ 59,064	\$ 59,064
Gestra Engineering, Inc.	S/DBE	Terracon Consultants, Inc.	Drilling Services - Block 7	\$ 13,920	\$ 13,920
Gestra Engineering, Inc.	S/DBE	Terracon Consultants, Inc.	Geotech	\$ 30,145	\$ 30,145
Prism Technical Management & Marketing, LLC	S/DBE	Deer District LLC	Inclusion Monitor - Workforce	\$ 171,704	\$ 171,704
TOTAL INCLUSION AND AMOUNT PAID				\$ 774,575	\$ 759,829
INCLUSION AS A % OF PROFESSIONAL SERVICES COSTS SUBJECT TO INCLUSION				35.1%	
INCLUSION AS A % OF PROFESSIONAL SERVICES PAYMENTS MADE				35.1%	
PROFESSIONAL SERVICES COST SUBJECT TO INCLUSION				\$ 2,203,682	
TOTAL PROFESSIONAL SERVICES PAYMENTS				\$ 2,164,920	



Public Plaza : Professional Services Inclusion

Table 6 - Public Plaza: Professional Services Inclusion through March 31, 2018

SBE, DBE, SDB, or 8(a) FIRMS	SBE, DBE, SDB or 8(a)	SUBCONTRACTOR TO	SERVICE PERFORMED	CONTRACT AMOUNT	AMOUNT PAID THROUGH 3/31/18
Cross Management Services, Inc.	S/DBE	Deer District LLC	Inclusion Monitor - Business	\$ 24,300	\$ 19,978
Nagel Architects	SDB	Deer District LLC	Architectural & Engineering	\$ 27,900	\$ 27,900
Prism Technical Management & Marketing, LLC	S/DBE	Deer District LLC	Inclusion Monitor - Workforce	\$ 50,000	\$ 47,210
Rinka Chung Architecture, Inc.	S/DBE	M. Arthur Gensler Jr. & Associates, Inc.	Architectural	\$ 152,650	\$ 152,650
Rinka Chung Architecture, Inc.	S/DBE	Deer District LLC	Architectural	\$ 108,153	\$ 51,767
Wrightson, Johnson, Haddon & Williams, Inc.	DBE	M. Arthur Gensler Jr. & Associates, Inc.	AV/IT Design	\$ 2,275	\$ 2,275
Wrightson, Johnson, Haddon & Williams, Inc.	DBE	Rinka Chung Architecture, Inc.	AV/IT Design	\$ 4,225	\$ 0
ZS, LLC	SBE	M. Arthur Gensler Jr. & Associates, Inc.	Structural Engineering	\$ 3,000	\$ 3,000
TOTAL INCLUSION AND AMOUNT PAID				\$ 372,503	\$ 304,780
INCLUSION AS A % OF PROFESSIONAL SERVICES COSTS				36.4%	
INCLUSION AS A % OF PROFESSIONAL SERVICES PAYMENTS MADE				31.8%	
PROFESSIONAL SERVICES COST				\$1,024,423	
TOTAL PROFESSIONAL SERVICES PAYMENTS				\$ 957,035	



Construction Inclusion



A PERMANENT MARK ON MILWAUKEE'S SKYLINE

Applied Flooring Solutions LLC, LLC

"The Arena is a jewel in Milwaukee, and we are very proud of our work"



**Christine and Glenn Urban, Owners
Applied Flooring Solutions LLC, LLC.**

Husband and wife, Christine and Glenn Urban, founded Applied Flooring Solutions LLC in 2001, each bringing decades of experience in the flooring industry. Though originally working for competing companies, the pair combined forces and established their business in the dining room of their home. In the years that would follow, the Applied Flooring Solutions LLC team was able to purchase a warehouse and grow to a staff of 25 employees.

Applied Flooring Solutions LLC is among the leading providers of flooring solutions for cheese and meat processing centers and sports venues. Notably, the firm has participated in all Lambeau Field expansions and renovations since 2002. Though travel is most often contained within Wisconsin, Applied Flooring Solutions LLC has lent its expertise in other parts of the Midwest as well.

When flooring solutions were needed for the Bucks Arena, Christine, President of Applied Flooring Solutions LLC, knew that the firm's participation on this major project made perfect sense: "Applied Flooring Solutions LLC is a certified master contractor for BASF (an MMA flooring system), a status we have to maintain every year. And, as a certified minority-owned company, we satisfy the minority participation rules. It was a win-win for everybody." Highly skilled in the application of specified BASF products, the team was responsible for an impressive 25,000 square feet worth of work (40 to 50 rooms), completing the flooring for areas in the Arena including locker rooms, concession areas, and bathrooms.

Though initially an intimidating job to take on administratively, Christine and her staff quickly developed a system for completing their required tasks each week. Ultimately, "it was a great learning experience." The firm views its participation as an opportunity to show their capabilities in successfully accomplishing a large project on time and within the reporting requirements, despite having a small team. Of her staff, Christine says, "We stand behind our work no matter what. We will work to make sure everything is just right in every situation."

Christine advises new firms to remain flexible in an industry that can be unpredictable. "Be prepared to wear many hats, especially as a smaller company. No two days will ever be the same and you will have a variety of duties." This flexibility, commitment to quality, and unmatched expertise enabled the team at Applied Flooring Solutions LLC to leave their permanent mark on Milwaukee's skyline. Christine shares, "The Arena is a jewel in Milwaukee, and we are very proud of our work. It is a beautiful facility and a job well done. It was an honor to be a part of it."

Wisconsin Entertainment and Sports Center: Construction Inclusion

Table 7 - Wisconsin Entertainment and Sports Center: Construction Inclusion through March 31, 2018

SBE, DBE, SDB, OR 8(a) FIRMS	SBE, DBE, SDB or 8(a)	SUBCONTRACTOR TO	SERVICE PERFORMED	CONTRACT AMOUNT	AMOUNT PAID THROUGH 3/31/18
Abaxent, LLC	S/DBE	Johnson Controls, Inc.	Cisco Stadium Hardware & Software	\$ 1,367,373	\$ 22,500
Abaxent, LLC	S/DBE	Johnson Controls, Inc.	Cisco Stadium Hardware & Software	\$ 4,204,100	\$ 2,403,186
Affirmative Supply Co.	SBE	C. M. Morris Group Inc.	Fireproofing Materials	\$ 493,858	\$ 493,858
Applied Flooring Solutions LLC, LLC	DBE	M.A. Mortenson Company	Epoxy Flooring	\$ 356,755	\$ 237,624
Arrow Specialized Carriers, Inc.	SDB	Spancrete, Inc.	Precast Hauling	\$ 242,636	\$ 242,636
Arteaga Construction, Inc.	S/DBE	Langer Roofing & Sheet Metal Inc.	Sheet Metal Fabrication & Installation	\$ 976,898	\$ 879,208
Arteaga Construction, Inc.	S/DBE	M.A. Mortenson Company	Masonry	\$ 4,598,966	\$ 4,369,018
ASAP Fastening Systems, Inc.	DBE	Merrill Iron & Steel, Inc.	Fasteners	\$ 65,514	\$ 65,514
ASAP Fastening Systems, Inc.	DBE	Merrill Iron & Steel, Inc.	Fasteners	\$ 240,476	\$ 240,476
B&D Contractors, Inc.	S/DBE	Construction Supply & Erection, Inc.	Labor and Materials	\$ 300,382	\$ 291,214
Belonger Corporation	SBE	Ice Builders, Inc.	Labor and Materials	\$ 320,105	\$ 167,770
Benchmark LLC	DBE	Irwin Seating Co.	Seating Installation	\$ 396,615	\$ 131,665
Best Erectors, Inc.	S/DBE	Construction Supply & Erection, Inc.	Fabricate & Erect Drink Rails	\$ 11,200	\$ 0
Best Erectors, Inc.	S/DBE	Midwest Stairs & Iron, Inc.	Erector	\$ 609,100	\$ 609,100
BMR Design Group, Inc.	SBE	United States Alliance Fire Protection, Inc.	Design	\$ 785,730	\$ 585,361
C-Butts Electric, Inc.	S/DBE	Uihlein Electric Co., Inc.	Install Pipe and Wire	\$ 288,191	\$ 288,191
Choice Construction Companies, Inc.	S/DBE	Ice Builders, Inc.	Supply and install Rebar/Mesh	\$ 25,298	\$ 0
Choice Construction Companies, Inc.	S/DBE	Merrill Iron & Steel, Inc. / JP Cullen & Sons, Inc.	Steel Erection	\$ 1,167,693	\$ 1,161,440
Choice Construction Companies, Inc.	S/DBE	Merrill Iron & Steel, Inc. / JP Cullen & Sons, Inc.	Shoring Tower Rebar	\$ 14,400	\$ 12,960
Choice Construction Companies, Inc.	S/DBE	M.A. Mortenson Company	CIP Concrete (Rebar Install)	\$ 1,600,004	\$ 1,482,816
Choice Construction Companies, Inc.	S/DBE	Spancrete, Inc.	Precast Concrete Erection	\$ 745,704	\$ 682,424
Choice Construction Companies, Inc.	S/DBE	Staff Electric Co., Inc.	Concrete Work	\$ 2,039	\$ 2,039
CK Gates and Associates LLC	S/DBE	Johnson Controls Inc.	PM, Field Verified/ Contract Mgmt	\$ 303,638	\$ 159,255
Courtland LLC	DBE	Egan Company	Supply Curtain Wall Glass/Framing	\$ 1,955,000	\$ 1,864,301

Table continued on next page

Wisconsin Entertainment and Sports Center: Construction Inclusion (Continued)

Table 7 - Wisconsin Entertainment and Sports Center: Construction Inclusion through March 31, 2018 - Continued

SBE, DBE, SDB, OR 8(a) FIRMS	SBE, DBE, SDB or 8(a)	SUBCONTRACTOR TO	SERVICE PERFORMED	CONTRACT AMOUNT	AMOUNT PAID THROUGH 3/31/18
Courtland LLC	DBE	M.A. Mortenson Company	Hardware	\$ 48,715	\$ 0
D & G Insulation, Inc.	DBE	Ice Builders, Inc.	Mechanical Room Insulation	\$ 35,265	\$ 35,265
D & M Express of Wisconsin, Inc.	DBE	Egan Company	Trucking	\$ 30,000	\$ 28,714
D & M Express of Wisconsin, Inc.	DBE	Merrill Iron & Steel, Inc.	Trucking	\$ 440,334	\$ 440,334
Dairyland Energy Solutions, Inc.	S/DBE	Rite-Hite Co., LLC	Electrical	\$ 33,905	\$ 0
Dairyland Energy Solutions, Inc.	S/DBE	Staff Electric Co., Inc.	Generator/Transfer Switch	\$ 988,252	\$ 889,936
Dairyland Energy Solutions, Inc.	S/DBE	Staff Electric Co., Inc. / Johnson Controls Inc.	Labor & Materials	\$ 2,302,418	\$ 1,050,876
Duwe Metal Products, Inc.	DBE	Construction Supply & Erection, Inc.	Miscellaneous Metals	\$ 169,712	\$ 16,344
Duwe Metal Products, Inc.	DBE	Merrill Iron & Steel, Inc.	Furnish & Install Structural Steel	\$ 10,852	\$ 10,852
Duwe Metal Products, Inc.	DBE	Merrill Iron & Steel, Inc.	Misc. Fabrication	\$ 1,149,099	\$ 1,117,340
Duwe Metal Products, Inc.	DBE	Merrill Iron & Steel, Inc.	Lab Mockup Fabrication and Erect	\$ 56,674	\$ 56,674
Duwe Metal Products, Inc.	DBE	Merrill Iron & Steel, Inc.	Joist Supply	\$ 57,415	\$ 57,415
Duwe Metal Products, Inc.	DBE	Merrill Iron & Steel, Inc.	Catwalk Fabrication	\$ 1,500,718	\$ 1,390,042
Duwe Metal Products, Inc.	DBE	Merrill Iron & Steel, Inc. / JP Cullen & Sons, Inc.	Steel Erection - Areas E & F & Temp Bracing, Shoring Tower	\$ 2,298,033	\$ 2,175,960
Duwe Metal Products, Inc.	DBE	Merrill Iron & Steel, Inc. / JP Cullen & Sons, Inc.	Temp Braces	\$ 202,063	\$ 202,063
Emerald City Tile, Inc.	SBE	Grazzini Brothers and Company	Material Supplier	\$ 922,115	\$ 922,115
Equity Supply Group LLC	S/DBE	MG McGrath Inc.	Waterproofing Zinc	\$ 1,000,000	\$ 853,030
Equity Supply Group LLC	SBE	Northern Illinois Terrazzo & Tile	Supply Terrazzo Material	\$ 595,615	\$ 595,615
Express Insulation, Inc.	DBE	Grunau Company, Inc.	Insulation	\$ 2,099,672	\$ 1,699,581
Express Insulation, Inc.	DBE	Hooper Corporation	Insulation	\$ 443,709	\$ 406,707
Hall Trucking	DBE	Spancrete, Inc.	Trucking	\$ 30,240	\$ 30,240
Hard Rock Sawing & Drilling Specialists Company	DBE	Construction Supply & Erection, Inc.	Core Drilling	\$ 2,725	\$ 2,725
Hard Rock Sawing & Drilling Specialists Company	DBE	Hooper Corporation	Saw Cutting/Coring (T&M)	\$ 36,556	\$ 36,556
Hard Rock Sawing & Drilling Specialists Company	DBE	Spancrete, Inc.	Cutting Precast	\$ 9,408	\$ 9,408

Table continued on next page

Wisconsin Entertainment and Sports Center: Construction Inclusion (Continued)

Table 7 - Wisconsin Entertainment and Sports Center: Construction Inclusion through March 31, 2018 - Continued

SBE, DBE, SDB, OR 8(a) FIRMS	SBE, DBE, SDB or 8(a)	SUBCONTRACTOR TO	SERVICE PERFORMED	CONTRACT AMOUNT	AMOUNT PAID THROUGH 3/31/18
Hard Rock Sawing & Drilling Specialists Company	DBE	Staff Electric Co., Inc.	Core Drilling	\$ 36,275	\$ 36,164
Hetzel-Sanfilippo Inc.	DBE	Austad & Son, Inc.	Acoustical Ceilings	\$ 550,000	\$ 373,007
Hetzel-Sanfilippo Inc.	DBE	Austad & Son, Inc./Wall-Tech, Inc.	Labor & Drywall Framing	\$ 80,000	\$ 0
Hetzel-Sanfilippo Inc.	DBE	Langer Roofing & Sheet Metal Inc.	Carpentry	\$ 550,668	\$ 361,404
Hetzel Tile & Marble, Inc.	DBE	Grazzini Brothers & Company	Tile Installer	\$ 356,075	\$ 0
Hiram Power Electric, LLC	S/DBE	Johnson Controls Inc.	A/V Broadcasting Equipment	\$ 552,775	\$ 360,393
Hiram Power Electric, LLC	S/DBE	Staff Electric Co., Inc.	Electrical Labor & Materials	\$ 1,229,255	\$ 0
House of Stone, Inc.	SBE	Wilkie Sanderson	Stone Counters	\$ 562,883	\$ 0
Hurt Electric Inc.	S/DBE	Staff Electric Co., Inc.	Distribution Equipment	\$ 2,689,782	\$ 2,429,558
Hurt Electric Inc.	S/DBE	Staff Electric Co., Inc.	Eaton/Powerware	\$ 465,338	\$ 465,307
Hurt Electric Inc.	S/DBE	Staff Electric Co., Inc.	Light Fixtures	\$ 4,716,105	\$ 4,598,335
HVA Products, Inc.	DBE	Grunau Company	HVAC Materials & Equipment	\$ 1,412,625	\$ 1,190,204
HVA Products, Inc.	DBE	Grunau Company	Supply & Install HVAC Vehicle Exhaust System	\$ 111,900	\$ 50,355
JCP Construction LLC	S/DBE	Chenery Bros. Inc.	Waterproofing	\$ 59,773	\$ 59,773
JCP Construction LLC	S/DBE	Ice Builders, Inc.	Vapor Barrier Installation	\$ 68,770	\$ 0
JCP Construction LLC	S/DBE	M.A. Mortenson Company	Site Concrete	\$ 662,242	\$ 595,066
JCP Construction LLC	S/DBE	M.A. Mortenson Company	Division 10 Specialities	\$ 1,685,174	\$ 334,974
JCP Construction LLC	S/DBE	M.A. Mortenson Company	Perimeter Security	\$ 1,733,753	\$ 1,597,113
JCP Construction LLC	SBE	Merrill Iron & Steel, Inc. / JP Cullen & Sons, Inc.	Shoring Tower Concrete Footings	\$ 32,892	\$ 29,603
JCP Construction LLC	S/DBE	MG McGrath Inc.	Install Grace HT	\$ 219,591	\$ 219,591
JCP Construction LLC	SBE	SC Railing Company Company	Railing Installation	\$ 1,187,289	\$ 576,123
JCP Construction LLC	S/DBE	Wall-Tech, Inc.	Carpentry	\$ 600,064	\$ 600,064
JCP Construction LLC	S/DBE	Wall-Tech, Inc.	Carpentry	\$ 180,000	\$ 156,556
Ketchum Professional Resources, LLC	DBE	Stafford-Smith Inc., Inc.	Supply and Install Equipment	\$ 1,673,165	\$ 1,120,973

Table continued on next page

Wisconsin Entertainment and Sports Center: Construction Inclusion (Continued)

Table 7 - Wisconsin Entertainment and Sports Center: Construction Inclusion through March 31, 2018 - Continued

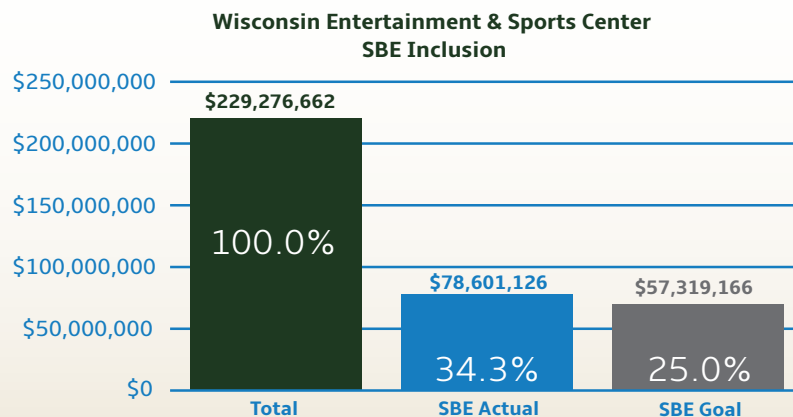
SBE, DBE, SDB, OR 8(a) FIRMS	SBE, DBE, SDB or 8(a)	SUBCONTRACTOR TO	SERVICE PERFORMED	CONTRACT AMOUNT	AMOUNT PAID THROUGH 3/31/18
Ketchum Professional Resources, LLC	DBE	Stafford-Smith Inc., Inc.	Supply and Install Equipment	\$ 329,824	\$ 327,450
McDowell Construction Corporation	SBE	Northway Fence, Inc.	Fencing Materials	\$ 37,288	\$ 37,288
NTL, LLC	SBE	Spancrete Inc.	Trucking	\$ 60,600	\$ 50,000
Nuvo Construction Company, Inc.	S/DBE	Michels Corporation	Pile Materials	\$ 445,785	\$ 445,785
P.L. Freeman Co.	SBE	Grunau Company, Inc.	Materials and Installation	\$ 2,496,359	\$ 2,496,359
P.L. Freeman Co.	SBE	Hooper Corporation	Labor	\$ 328,644	\$ 299,308
P.L. Freeman Co.	SBE	Langer Roofing & Sheet Metal Inc.	Roofing	\$ 135,179	\$ 117,078
P.L. Freeman Co.	SBE	Stafford-Smith Inc., Inc.	Food Service Equipment Installation	\$ 42,316	\$ 24,585
Peachy Clean Commerical and Construction Cleaning LLC	DBE	Grunau Company, Inc.	Cleaning	\$ 4,200	\$ 4,200
Price & Sons, Incorporated	SBE	Hooper Corporation	Materials Supplier	\$ 857,803	\$ 857,803
Rams Contracting, LTD.	SBE	Ice Builders, Inc.	Excavate Rink Mains	\$ 12,000	\$ 10,260
Rams Contracting, LTD.	SBE	M.A. Mortenson Company	Earthwork / Utilities	\$ 3,795,587	\$ 3,593,864
Rams Contracting, LTD.	SBE	M.A. Mortenson Company	Asphalt Paving	\$ 64,414	\$ 0
Rams Contracting, LTD.	SBE	Merrill Iron & Steel, Inc. / JP Cullen & Sons, Inc.	Shoring Tower, Concrete Footing	\$ 4,894	\$ 4,894
Rockwell Mechanical LLC	SBE	Grunau Company, Inc.	HVAC	\$ 1,138,835	\$ 1,138,835
Sonag Company, Inc.	DBE	Common Link Construction, LLC	T&M Framing & GWB	\$ 735,000	\$ 549,774
Sonag Ready Mix, LLC	SBE	Ice Builders, Inc.	CIP Concrete (Ready Mix Supplier)	\$ 51,373	\$ 51,373
Sonag Ready Mix, LLC	SBE	M.A. Mortenson Company	CIP Concrete (Ready Mix Supplier)	\$ 2,154,590	\$ 2,060,039
Sonag Ready Mix, LLC	SBE	Michels Corporation	Concrete & Pile Materials	\$ 101,877	\$ 101,877
South Star, Inc.	SBE	Rams Contracting, LTD.	Trucking	\$ 77,527	\$ 77,527
SPE, Inc.	DBE	Grunau Company, Inc.	Install TV Brackets	\$ 19,900	\$ 0
Stormwater Plans LLC	DBE	Hooper Corporation	Design BIM Work	\$ 180,000	\$ 148,810
Stormwater Plans LLC	DBE	Uihlein Electric Co., Inc.	Design BIM Work	\$ 33,708	\$ 33,708

Table continued on next page

Wisconsin Entertainment and Sports Center: Construction Inclusion (Continued)

Table 7 - Wisconsin Entertainment and Sports Center: Construction Inclusion through March 31, 2018 - Continued

SBE, DBE, SDB, OR 8(a) FIRMS	SBE, DBE, SDB or 8(a)	SUBCONTRACTOR TO	SERVICE PERFORMED	CONTRACT AMOUNT	AMOUNT PAID THROUGH 3/31/18
Thomas A. Mason Company, Inc.	S/DBE	Grunau Company, Inc.	Touch-Up/Paint	\$ 30,998	\$ 21,220
Thomas A. Mason Company, Inc.	S/DBE	Ice Builders, Inc.	Painting	\$ 8,762	\$ 8,762
Thomas A. Mason Company, Inc.	S/DBE	M.A. Mortenson Company	Carpet & Resilient Flooring	\$ 1,985,943	\$ 286,560
Thomas A. Mason Company, Inc.	S/DBE	M.A. Mortenson Company	Wall Coverings, Painting & Coatings	\$ 2,175,351	\$ 1,198,509
Thomas A. Mason Company, Inc.	SBE	Merrill Iron & Steel, Inc. / JP Cullen & Sons, Inc.	Touch-Up/Paint	\$ 514,401	\$ 454,775
Thomas A. Mason Company, Inc.	SBE	Wall-Tech, Inc.	Drywall, Taping and Finishing	\$ 1,892,140	\$ 1,807,489
Tremmel-Anderson Trucking LLC	S/DBE	Rams Contracting, LTD.	Trucking	\$ 385,485	\$ 385,485
Tremmel-Anderson Trucking LLC	S/DBE	Veit & Company, Inc.	Trucking/ Disposal	\$ 55,178	\$ 55,178
Wards Welding & Fabrication, Inc.	SBE	Merrill Iron & Steel, Inc.	Material Supply	\$ 1,446,956	\$ 1,446,956
ZS, LLC	SBE	Construction Supply & Erection, Inc.	Structural Engineering	\$ 7,770	\$ 7,770
ZS, LLC	SBE	Grunau Company, Inc.	Structural Engineering	\$ 38,875	\$ 37,965
TOTAL INCLUSION				\$ 78,601,126	\$ 61,716,397
INCLUSION AS A % OF CONSTRUCTION COSTS SUBJECT TO INCLUSION				34.3%	
INCLUSION AS A % OF CONSTRUCTION PAYMENTS MADE				37.1%	
CONSTRUCTION COST SUBJECT TO INCLUSION				\$229,276,662	
CONSTRUCTION PAYMENTS				\$ 166,344,357	



5th Street Parking Structure: Construction Inclusion

Table 8 - 5th Street Parking Structure: Construction Inclusion through March 31, 2018

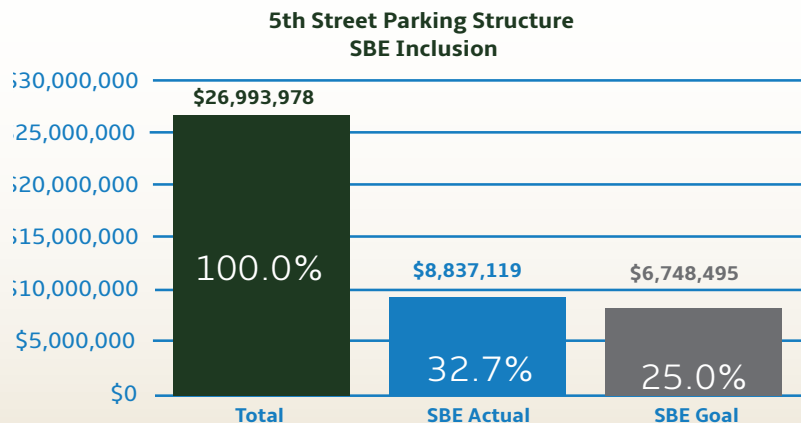
SBE, DBE, SDB, OR 8(a) FIRMS	SBE, DBE, SDB or 8(a)	SUBCONTRACTOR TO	SERVICE PERFORMED	CONTRACT AMOUNT	AMOUNT PAID THROUGH 3/31/18
3G Trucking, LLC	DBE	Lake Edge Logistics, LLC	Trucking	\$ 1,900	\$1,900
Best Erectors, Inc.	DBE	Klein Dickert Milwaukee, Inc.	Curtain Wall Erection	\$ 213,527	\$ 213,527
Best Erectors, Inc.	DBE	Midwest Stairs & Iron, Inc.	Barrier Cables	\$ 27,100	\$ 27,100
Best Erectors, Inc.	DBE	Midwest Stairs & Iron, Inc.	Metal Panels	\$ 327,928	\$ 229,350
Choice Construction Companies, Inc.	S/DBE	C. G. Schmidt, Inc.	Reinforcing Steel	\$ 2,032,588	\$ 2,032,588
Choice Construction Companies, Inc.	S/DBE	J. H. Findorff & Son Inc.	Reinforcing Steel	\$ 193,899	\$ 193,899
Duwe Metal Products, Inc.	DBE	J. H. Findorff & Son Inc.	Structural & Misc. Metals	\$ 530,218	\$ 530,218
EFH Trucking LLC	DBE	Lake Edge Logistics, LLC	Trucking & Tipping Fees	\$ 374,380	\$ 374,380
Express Insulation, Inc.	DBE	J. F. Ahern Co.	Fire Protection Insulation	\$ 8,475	\$ 8,475
Express Insulation, Inc.	DBE	J. F. Ahern Co.	HVAC Insulation	\$ 6,390	\$ 6,390
Express Insulation, Inc.	DBE	J. F. Ahern Co.	Plumbing Insulation	\$ 50,335	\$ 50,335
Hard Rock Sawing & Drilling Specialist Company	S/DBE	C.G. Schmidt, Inc.	Sawing Cutting	\$ 9,067	\$ 8,160
Hard Rock Sawing & Drilling Specialist Company	S/DBE	J. H. Findorff & Son Inc.	Wall Sawing	\$ 3,545	\$ 3,545
Harkinson Consulting LLC	DBE	J. H. Findorff & Son Inc.	Labor Compliance Services	\$ 74,292	\$ 66,733
Heider & Bott Company	DBE	Bohmann & Vick, Inc.	Material Supplier	\$ 34,000	\$ 29,185
Hetzel-Sanfilippo Inc.	DBE	J. H. Findorff & Son Inc.	Drywall	\$ 167,782	\$ 167,782
Hiram Power Electric, LLC	S/DBE	Lemberg Electric Company, Inc.	Electrical Materials	\$ 412,563	\$ 374,030
Hiram Power Electric, LLC	S/DBE	Staff Electric Co., Inc.	Supply & Install Struct. Cable	\$ 28,182	\$ 28,182
Hurt Electric Inc.	S/DBE	Uihlein Electric Co., Inc.	Electrical	\$ 16,932	\$ 16,932
HVA Products, Inc.	DBE	J. F. Ahern Co.	HVAC Equipment	\$ 45,905	\$ 45,905
HVA Products, Inc.	DBE	J. F. Ahern Co.	Controls	\$ 25,350	\$ 25,350
JCP Construction LLC	S/DBE	J. H. Findorff & Son Inc.	General Trades/ Carpentry	\$ 175,467	\$ 152,246
KMI Construction LLC	SBE	J. H. Findorff & Son Inc.	Masonry	\$ 1,517,092	\$ 1,363,258
LF Green Development, LLC	S/DBE	Michels Corporation	Construction Staking	\$ 3,823	\$ 3,823
Marek Landscaping, LLC	DBE	Edgerton Contractors, Inc.	Erosion Control	\$ 2,881	\$ 2,881

Table continued on next page

5th Street Parking Structure: Construction Inclusion (Continued)

Table 8 - 5th Street Parking Structure: Construction Inclusion through March 31, 2018 - Continued

SBE, DBE, SDB, OR 8(a) FIRMS	SBE, DBE, SDB or 8(a)	SUBCONTRACTOR TO	SERVICE PERFORMED	CONTRACT AMOUNT	AMOUNT PAID THROUGH 3/31/18
Nuvo Construction Company, Inc.	S/DBE	Michels Corporation	Pile Material Supplier	\$ 263,729	\$ 263,729
Price and Sons, Incorporated	S/DBE	J. F. Ahern Co.	Plumbing Material Supplier	\$ 47,982	\$ 47,982
Renegade Trucking, LLC	SBE	Lake Edge Logistics, LLC	Trucking	\$ 708	\$ 708
Sanchez Painting Contractors, Inc.	SBE	J. H. Findorff & Son Inc.	Painting	\$ 201,871	\$ 201,871
Sanchez Painting Contractors, Inc.	SBE	J. H. Findorff & Son Inc.	Concrete Sealing	\$ 38,567	\$ 34,710
Sonag Ready Mix, LLC	SBE	C. G. Schmidt, Inc.	Ready Mix Concrete	\$ 1,741,420	\$ 1,741,420
Sonag Ready Mix, LLC	SBE	Michels Corporation	Ready Mix Concrete	\$ 31,462	\$ 31,462
Sonag Ready Mix, LLC	SBE	J. H. Findorff & Son Inc.	Ready Mix Concrete	\$ 202,455	\$ 202,455
Sonag Ready Mix, LLC	SBE	J. H. Findorff & Son Inc.	Precast Grout Mix	\$ 390	\$ 351
Sonag Ready Mix, LLC	SBE	Stark Pavement Corporation	Ready Mix Concrete	\$ 17,695	\$ 17,695
South Star, Inc.	S/DBE	Lake Edge Logistics, LLC	Trucking	\$ 5,752	\$ 5,752
South Star, Inc.	S/DBE	Stark Pavement Corporation	Trucking	\$ 1,467	\$ 1,467
TOTAL INCLUSION				\$ 8,837,119	\$ 8,505,776
INCLUSION AS A % OF CONSTRUCTION COST SUBJECT TO INCLUSION				32.7%	
INCLUSION AS A % OF CONSTRUCTION PAYMENTS MADE				31.5%	
CONSTRUCTION COST SUBJECT TO INCLUSION				\$ 26,993,978	
CONSTRUCTION PAYMENTS				\$ 26,993,978	

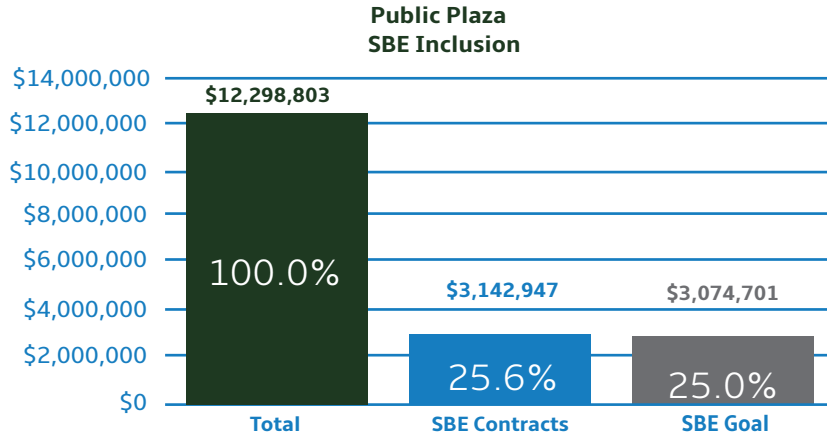


Public Plaza: Construction Inclusion

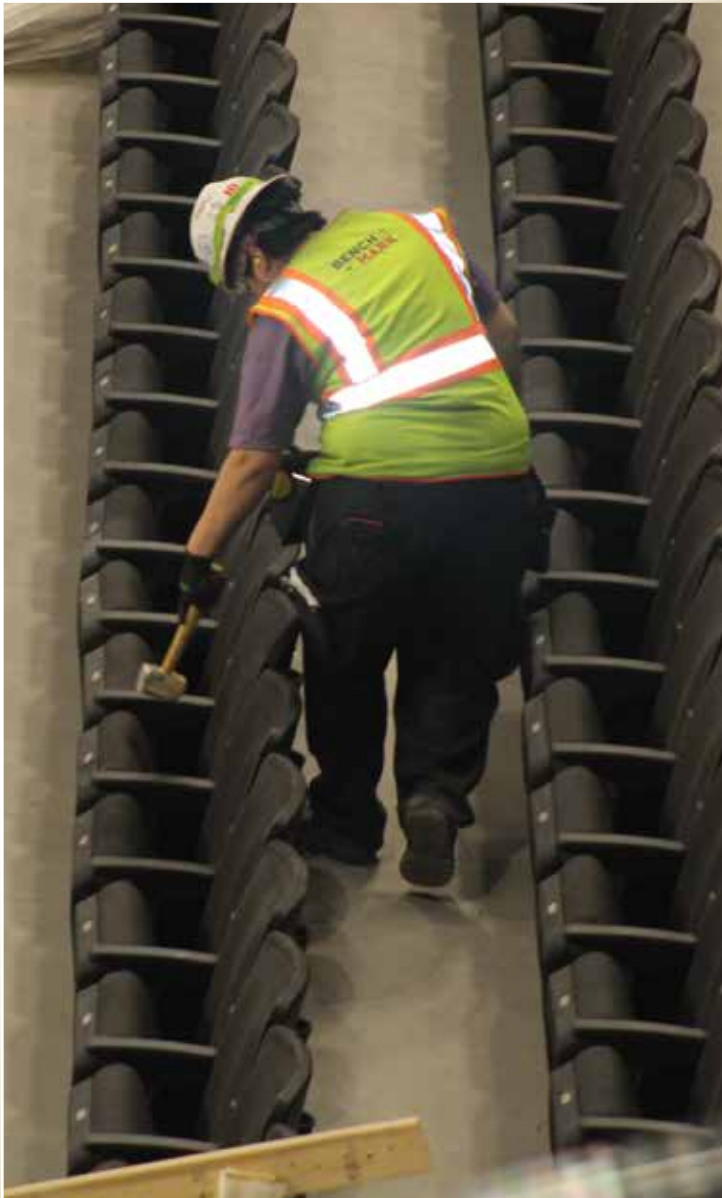
Table 9 - Public Plaza: Construction Inclusion through March 31, 2018

SBE, DBE, SDB, OR 8(a) FIRMS	SBE, DBE, SDB or 8(a)	SUBCONTRACTOR TO	SERVICE PERFORMED	CONTRACT AMOUNT	AMOUNT PAID THROUGH 3/31/18
Arteaga Construction, Inc.	SBE	Superior Masonry Builders, Inc.	Supply and Install Bollards and Gate Fence	\$ 618,500	\$ 0
Arteaga Construction, Inc.	SBE	Superior Masonry Builders, Inc.	Supply and Install Bollards and Gate Fence	\$ 79,750	\$ 0
Arteaga Construction, Inc.	SBE	Veit & Company, Inc.	Crane Rigging & Lifting Services	\$ 192,748	\$ 192,748
Autumn Trucking, Inc.	SBE	Veit & Company, Inc.	Trucking/Fuel Delivery	\$ 35,932	\$ 35,932
Best Ed, LLC	SBE	Hunzinger Construction Company	Supplies	\$ 1,695	\$ 1,695
Flores Contractors, Inc.	DBE	Veit & Company, Inc.	Erosion Control Measures	\$ 2,006	\$ 2,006
Hard Rock Sawing & Drilling Specialists Company	SBE	Veit & Company, Inc.	Saw Cutting/Core Drilling	\$ 40,235	\$ 40,235
Hero Plumbing, LLC	DBE	Cornerstone Plumbing, LLC	Installation of Trench Drains	\$ 142,744	\$ 0
Hurt Electric, Inc.	DBE	Pieper Electric, Inc.	Supply and Install Electrical Materials	\$ 368,065	\$ 0
Price and Sons, Incorporated	S/DBE	Cornerstone Plumbing, LLC	Distributor	\$ 12,740	\$ 0
Rams Contracting, LTD.	S/DBE	Hunzinger Construction Company	Site Demo and Earthwork	\$ 516,802	\$208,321
Sonag Ready Mix, LLC	SBE	Cornerstone Plumbing, LLC	Supply Concrete Ready Mix	\$ 8,000	\$ 0
Sonag Ready Mix, LLC	SBE	Superior Masonry Builders, Inc.	Supply Concrete Ready Mix	\$ 203,000	\$ 0
Sonag Ready Mix, LLC	SBE	Superior Masonry Builders, Inc.	Supply Concrete Ready Mix	\$ 13,920	\$ 0
Thomas A. Mason Company, Inc.	S/DBE	Hunzinger Construction Company	Painting	\$ 68,191	\$ 0
Tremmel-AndersonTrucking LLC	S/DBE	Cornerstone Plumbing, LLC	Trucking	\$ 70,000	\$ 0
Tremmel-AndersonTrucking LLC	S/DBE	Veit & Company, Inc.	Trucking	\$ 206,004	\$ 206,004
To Be Determined				\$ 562,615	\$ 0
TOTAL INCLUSION				\$ 3,142,947	\$ 686,941
INCLUSION AS A % OF CONSTRUCTION COST SUBJECT TO INCLUSION				25.6%	
INCLUSION AS A % OF CONSTRUCTION PAYMENTS MADE					23.1%
CONSTRUCTION COST SUBJECT TO INCLUSION				\$ 12,298,803	
CONSTRUCTION PAYMENTS					\$ 2,970,102

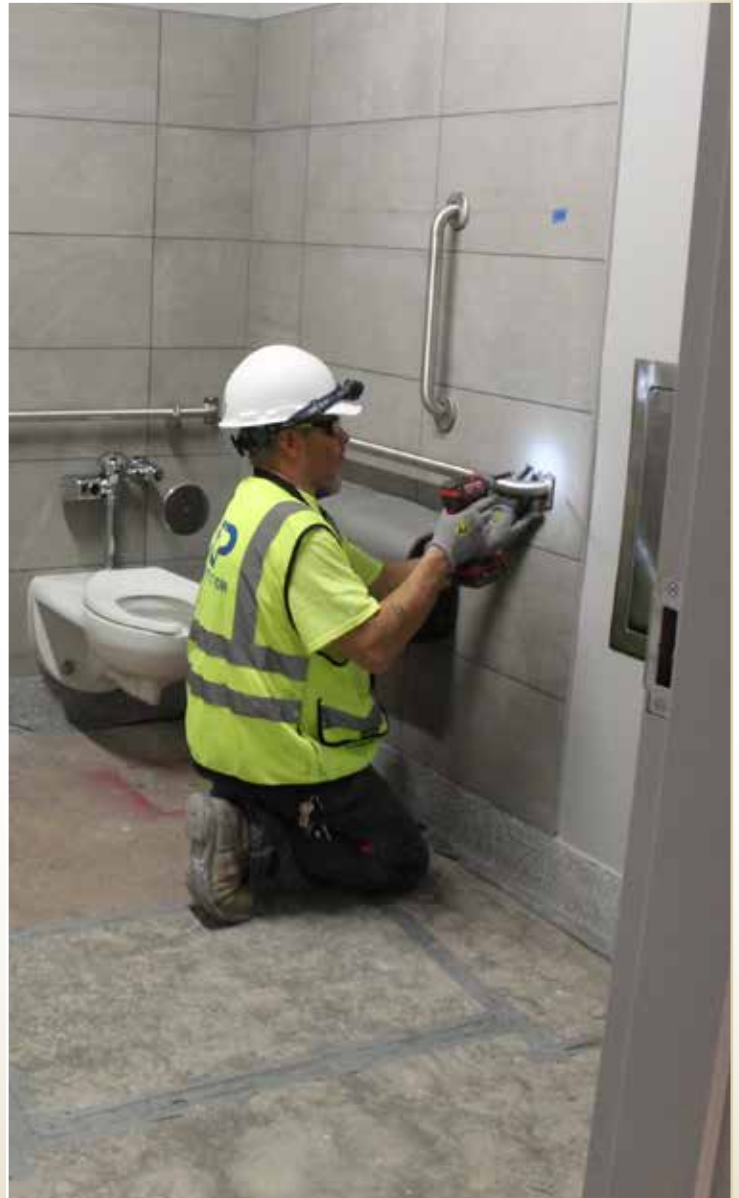
Public Plaza: Construction Inclusion



Worker installing seating.



Worker installing bathroom fixtures.



RPP Inclusion



Workers cutting electrical material.

THE CAREER PATH OF AN ELECTRICIAN

Robert Davenport - Staff Electric Co., Inc. - Electrician



"From Army to Circuits"

Sometimes the path to our careers are straight and other times they are like a long winding road. For Robert Davenport, a 17-year-old young man, started his career as a field generator worker for the Army Core of Engineers in 1977.

Robert earned his Associates Degree in air conditioning and refrigeration and got connected with the Milwaukee Bucks Arena project through a veteran's resource center and has been working as an electrician for Staff Electric Co., Inc. since August 2017.

Being RPP (Resident Preference Program) certified has surely helped Robert get the opportunity to work on many projects in Milwaukee, however the Bucks project is the largest by far. It's a "great program," Robert said. He became RPP certified through WRTP-BIG STEP in July 2017.

When questioned about some of the reasons Robert chose to remain in the construction field, he stated, "it feels good waking up every morning knowing I love my job and knowing I have a steady paycheck coming." Robert further mentioned that this field has given him great financial stability and has been a big change in his life since starting on his new career as an electrician.

MAKING YOUR FUTURE, AND SEIZING THE MOMENT

Harlan Coats - Duwe Metal Products, Inc. - Foreman (Ironworker)



"I am now a part of history"

Harlan Coats is a man that has no problem taking a chance, stepping out of the shadows, and working for what he wants. Mr. Coats started in construction in 1996 as a laborer. His first project was working on the Milwaukee Brewers Stadium. One thing for sure is, he knew that in construction he would make a good living. In 1998 he seized the opportunity to step out of the shadows and answer the call when the construction site was extremely short on Ironworkers. Harlan knew that he would learn a skill set that would make him more valuable and increase his salary. He has been an Ironworker since that day in 1998.

"I have been on the Milwaukee Bucks Arena project since the beginning of November 2016, after the completion of my last project at the Northwestern Mutual Building." As a Foreman, Harlan starts his work day off with morning stretches, assigning tasks to his crew, do's and don'ts for the day and their daily game plan. On this project, Harlan has been doing structural work; rodding and impacting steel and also assisted in assembling a crane.

"I feel that my skills have helped me get the jobs that I have been on," Harlan said. He went on to mention that some of the perks to working in construction is working outdoors and meeting people that are performing different trades.

Mr. Coats passionately expressed that he chose to make his own future and being in construction has allowed him to have a good living with great benefits. "I was able to purchase two homes... I plan on retiring in the next four years." "I can also say that being a part of the construction at the Milwaukee Bucks Arena, I am now a part of history!"

A NEW FOUND PURPOSE

Dexter Hunter - Hunzinger Construction Company - Carpenter



"People need to see how much (money) they could potentially make (in the Construction field)"

Dexter Hunter is a skilled carpenter with 12 years of experience currently performing carpentry and form work on the Public Plaza project. "I took on this trade as a carpenter just to get the skills necessary to know how to build and rehab homes. Being in construction has been exactly what I thought it was and I have learned a lot," said Dexter. He now knows how to build a house from the ground up and further expounded that, "Some positives to being in construction are that I continue to pick up skills every day, plus the organization of completing jobs more efficiently".

Prior to working in construction, Dexter worked in a foundry but has now found his purpose with a fulfilling career. He plans on working in construction for at least the next ten years.

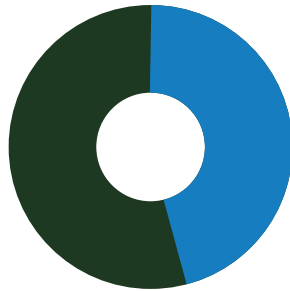
Dexter's brother in law advised him about the apprenticeship testing. He later passed the exam and has worked on projects such as Northwestern Mutual, Toshiba and the Art Museum and is now employed with Hunzinger Construction Company. When asked, how do you think we could get more people like yourself involved in construction or working on projects like the Bucks? Dexter said, "People need to see how much (money) they could potentially make- how the dollars transfer, and they need to know the elements of the field".

Wisconsin Entertainment and Sports Center: RPP Inclusion

Table 10 - Wisconsin Entertainment and Sports Center RPP Inclusion through March 31, 2018

Total Construction Hours	1,420,889.6
RPP Target Based on Total Hours (multiplied by 40%)	568,355.8
Applicable RPP Goal	40.0%
Total RPP Hours	602,058.6
RPP Hours Above (Below) Goal	33,702.7
RPP Percentage (Total RPP Construction Hours/Total Construction Hours Worked)	42.4%

Wisconsin Entertainment and Sports Center Residents Preference Program (RPP) Inclusion



- **42.4% RPP Participation**
602,058.6 Total RPP Hours
 - **57.6% Non-RPP Participation**
818,831.0 Total Non-RPP Hours
- 1,420,889.6 Total Workforce Hours

Table 11 - Wisconsin Entertainment and Sports Center: RPP Inclusion (excluding Non-Wisconsin residents) through March 31, 2018

Total Construction Hours	1,420,889.6
Less Hours Worked by Non-Wisconsin Residents	(66,718.5)
Construction Hours Worked by Wisconsin Residents Only	1,354,171.1
RPP Hours	602,058.6
RPP Participation Percentage (Excluding non-Wisconsin residents)	44.5%

Milwaukee Code of Ordinances (MCO) Section 355-7(1)(a) notes that for the purpose of calculating RPP participation "...worker hours'... excludes the number of hours of work performed by all non-Wisconsin residents."

Wisconsin Entertainment and Sports Center: RPP Inclusion

Table 12 - Wisconsin Entertainment and Sports Center: RPP Inclusion by Contractor through March 31, 2018

CONTRACTOR	SUBCONTRACTOR TO	SERVICE PERFORMED	WORKFORCE HOURS	RPP INCLUSION HOURS THROUGH 3/31/18
M. A. Mortenson Company	General Contractor	Concrete	157,121.0	62,754.0
Acuren Inspection	Sports Facility Acoustics Inc	Testing/Inspection	1,797.5	0.0
AMJ Construction	W.L Hall Co.	General Construction	134.5	0.0
API Construction Company	P.L. Freeman Co.	Siding/Roofing	4,044.5	1,968.0
API Construction Company	M. A. Mortenson Company	Siding/Roofing	2,724.5	1,105.5
Applied Flooring Solutions LLC	M. A. Mortenson Company	Flooring	2,110.3	1,230.3
Arteaga Construction, Inc.	Langer Roofing & Sheet Metal Inc.	Masonry	2,620.5	1,310.5
Arteaga Construction, Inc.	M. A. Mortenson Company	Masonry	50,077.0	21,036.5
Athletica Sports Systems, Inc.	Ice Builders, Inc.	Dasher Board Installation	117.5	0.0
Austad & Son, Inc.	M. A. Mortenson Company	Acoustical Tile	7,844.5	1,710.5
Austad & Son, Inc.	Wall-Tech, Inc.	Acoustical Tile	6,239.0	2,506.5
Automatic Entrances of WI	Egan Company	Door Installation	51.5	0.0
Automatic Entrances of WI	Laforce Inc.	Door Installation	14.3	0.0
B&D Contractors, Inc.	Constructions Supply & Erection, Inc.	Fabrication/ Installation	3,275.0	1,933.0
Badger Ladder/Scaffold LLC	Thomas A. Mason Company, Inc.	Scaffolding/Ladders	2,541.0	935.0
Balestrieri Environmental & Development, Inc.	Veit & Company, Inc.	Hazardous Material Remediation	68.0	34.0
Belonger Corporation, Inc.	Ice Builders, Inc.	Mechanical/Plumbing	1,220.0	605.0
Benchmark, LLC	Irwin Seating Company	Seating	6,963.8	2,026.0
Beson & Houle, LLC	Arbon Equipment	Structural Steel	1,187.5	0.0
Best Erectors, Inc.	Constructions Supply & Erection, Inc.	Steel Erection	125.0	0.0
Best Erectors, Inc.	Midwest Stairs & Iron, Inc.	Steel Erection	5,770.0	4,007.0
C.M. Morris Group, Inc.	M. A. Mortenson Company	Sprayed Applied Fireproofing	23,822.0	11,878.0
Cbutts Electric, LLC	Uihlein Electric Co., Inc.	Electrical	4,186.8	1,230.5
Chenery Brothers Inc.	M. A. Mortenson Company	Damproofing & Waterproofing	218.0	0.0
Choice Construction Companies, Inc.	Ice Builders, Inc.	Concr Reinf & PT Installation	146.5	35.5

Table continued on next page

Wisconsin Entertainment and Sports Center: RPP Inclusion (Continued)

Table 12 - Wisconsin Entertainment and Sports Center: RPP Inclusion by Contractor through March 31, 2018 - Continued

CONTRACTOR	SUBCONTRACTOR TO	SERVICE PERFORMED	WORKFORCE HOURS	RPP INCLUSION HOURS THROUGH 3/31/18
Choice Construction Companies, Inc.	J.P. Cullen & Sons, Inc.	Concr Reinf & PT Installation	10,716.0	4,954.0
Choice Construction Companies, Inc.	Staff Electric Co., Inc.	Concr Reinf & PT Installation	20.5	15.0
Choice Construction Companies, Inc.	Spancrete, Inc.	Concr Reinf & PT Installation	3,581.5	1,878.5
Choice Construction Companies, Inc.	M. A. Mortenson Company	Concr Reinf & PT Installation	16,566.0	7,131.5
Common Links Construction, LLC	M. A. Mortenson Company	Steel/Stud/Drywall	14,274.5	6,624.0
Construction Supply & Erection, Inc.	M. A. Mortenson Company	Erection	482.5	54.3
Concrete & Masonry Restoration, LLC	M. A. Mortenson Company	Restoration	154.5	5.3
Crowley Construction Corporation	Rams Contracting, LTD.	Pavement Marking	16.5	5.5
D & G Insulation	M. A. Mortenson Company	Insulation	126.0	0.0
D.F. Tomasini Contractors, Inc.	Staff Electric Co., Inc./ Rams Contracting, LTD.	Site Utilities	5,472.0	1,063.5
Dairyland Energy Solutions, Inc.	Arbon Equipment	Electrical	672.5	2.5
Dairyland Energy Solutions, Inc.	Johnson Controls, Inc.	Electrical	3,610.0	3,110.5
Dairyland Energy Solutions, Inc.	Staff Electric Co., Inc.	Electrical	1,554.0	1,554.0
Daktronics, Inc.	M. A. Mortenson Company	Video Display	1,494.5	0.0
Dawes Rigging & Crane Rental, Inc.	Choice Construction Companies, Inc.	Rigging/Erecting	850.5	0.0
Dawes Rigging & Crane Rental, Inc.	Common Links Construction, LLC	Rigging/Erecting	9.0	0.0
Dawes Rigging & Crane Rental, Inc.	Egan Company	Rigging/Erecting	489.0	0.0
Dawes Rigging & Crane Rental, Inc.	Grunau Company, Inc.	Rigging/Erecting	976.5	0.0
Dawes Rigging & Crane Rental, Inc.	JP Cullen & Sons Corporation	Rigging/Erecting	913.8	0.0
Dawes Rigging & Crane Rental, Inc.	Midwest Stairs & Iron, Inc.	Rigging/Erecting	391.0	0.0
Dawes Rigging & Crane Rental, Inc.	Wall-Tech, Inc.	Rigging/Erecting	1,475.0	0.0
Deangelis Construction LLC	Rams Contracting, LTD.	Concrete	394.0	108.8
DJ Rossetti Inc	Ice Builders, Inc.	Concrete	246.5	36.0
Doral Corporation	Ice Builders, Inc.	Rigging/Erecting	53.0	9.0
Doral Corporation	JCP Construction LLC	Rigging/Erecting	8,964.0	2,679.5

Table continued on next page

Wisconsin Entertainment and Sports Center: RPP Inclusion (Continued)

Table 12 - Wisconsin Entertainment and Sports Center: RPP Inclusion by Contractor through March 31, 2018- Continued

CONTRACTOR	SUBCONTRACTOR TO	SERVICE PERFORMED	WORKFORCE HOURS	RPP INCLUSION HOURS THROUGH 3/31/18
Doral Corporation	Staff Electric Co., Inc.	Rigging/Erecting	1,296.5	291.5
Duwe Metal Products, Inc.	Constructions Supply & Erection, Inc.	Structural Fabrication	1,011.0	151.5
Duwe Metal Products, Inc.	J.P. Cullen & Sons, Inc.	Structural Fabrication	22,688.5	14,985.5
Egan Company	M. A. Mortenson Company	Aluminum Entrances, Storefront	15,814.8	7,004.5
Express Insulation, Inc.	Hooper Corporation	Insulation	33,339.5	15,841.0
Gagnon, Inc.	Thomas A. Mason Company, Inc.	Insulation/Scaffolding/ Fireproofing	695.0	0.0
Gateway Concrete Forming Systems, Inc.	M. A. Mortenson Company	Concrete Shoring	357.0	0.0
Grazzini Brothers & Company	M. A. Mortenson Company	Commercial Tile/Flooring	20,876.5	7,930.8
Grunau Company, Inc.	M. A. Mortenson Company	HVAC	99,776.9	45,449.2
Hard Rock Sawing & Drilling Specialists Co.	Choice Construction Companies, Inc.	Concrete Saw Cutting	4.0	0.0
Hard Rock Sawing & Drilling Specialists Co.	Constructions Supply & Erection, Inc.	Concrete Saw Cutting	112.0	0.0
Hard Rock Sawing & Drilling Specialists Co.	Hooper Corporation	Concrete Saw Cutting	91.0	0.0
Hard Rock Sawing & Drilling Specialists Co.	Rams Contracting, LTD.	Concrete Saw Cutting	7.5	0.0
Hard Rock Sawing & Drilling Specialists Co.	Spancrete, Inc.	Concrete Saw Cutting	20.5	0.0
Hard Rock Sawing & Drilling Specialists Co.	Staff Electric Co., Inc.	Concrete Saw Cutting	147.5	0.0
Hetzel-Sanfilippo, Inc.	Austad & Son, Inc.	Gypsum Wallboard	881.5	326.0
Hetzel-Sanfilippo, Inc.	Langer Roofing & Sheet Metal Inc.	Gypsum Wallboard	3,652.0	1,616.5
Hetzel-Sanfilippo, Inc.	Wall-Tech, Inc.	Gypsum Wallboard	782.0	312.0
Hetzel Tile & Marble, Inc.	Grazzini Brothers & Company	Tile/Marble	2,040.5	655.0
High Voltage Maintenance	Staff Electric Co., Inc.	Electrical	381.5	0.0
Hiram Power Electric, LLC	Staff Electric Co., Inc.	Electrical	3,266.5	1,691.8
Hooper Corporation	M. A. Mortenson Company	Plumbing	58,334.0	23,573.0
House of Stone Inc	Wilkie Sanderson	Fabricator/Installer of natural/manufactured stone	285.5	0.0
Hurt Electric, Inc.	Pieper Electric, Inc./DAS, LLC	Electrical	456.0	0.0

Table continued on next page

Wisconsin Entertainment and Sports Center: RPP Inclusion (Continued)

Table 12 - Wisconsin Entertainment and Sports Center: RPP Inclusion by Contractor through March 31, 2018 - Continued

CONTRACTOR	SUBCONTRACTOR TO	SERVICE PERFORMED	WORKFORCE HOURS	RPP INCLUSION HOURS THROUGH 3/31/18
Hurt Electric, Inc.	Staff Electric Co., Inc.	Electrical	7,568.3	3,523.5
Ice Builders, Inc.	M. A. Mortenson Company	Store Refrigeration/Ice	672.0	0.0
Ideal Crane Rental, Inc.	Choice Construction Companies, Inc.	Crane Rental	352.5	169.5
Ideal Crane Rental, Inc.	Grunau Company, Inc.	Crane Rental	3.0	0.0
Ideal Crane Rental, Inc.	Langer Roofing & Sheet Metal Inc.	Crane Rental	1,781.3	0.0
International Erectors, Inc.	Spancrete, Inc.	Steel Erection	3,725.0	0.0
JCP Construction LLC	J.P. Cullen & Sons, Inc.	Install Portion of Acoustical Ceilings	117.5	81.0
JCP Construction LLC	M. A. Mortenson Company	Install Portion of Acoustical Ceilings	17,689.5	9,844.3
JCP Construction LLC	MG McGrath, Inc.	Install Portion of Acoustical Ceilings	1,538.9	1,538.9
JCP Construction LLC	SC Railing Company	Install Portion of Acoustical Ceilings	3,311.3	2,250.8
JCP Construction LLC	Wall-Tech, Inc.	Install Portion of Acoustical Ceilings	6,336.5	2,250.0
J.P. Cullen & Sons, Inc.	Merrill Iron & Steel, Inc.	Steel Fabrication	55,689.0	20,561.0
J.P. Cullen & Sons, Inc.	Daktronics, Inc.	Steel Fabrication	3,302.5	2,305.0
Kaemmerlen Parts & Service	Stafford-Smith Inc.	Electrical Services	2,501.5	1,525.5
Kone, Inc.	M. A. Mortenson Company	Elevators	13,993.8	0.0
Langer Roofing & Sheet Metal Inc.	M. A. Mortenson Company	Roofing	33,024.0	12,644.3
Metropolitan Mechanical Contractors, Inc.	Grunau Company, Inc.	General Contracting	1,820.0	0.0
MG McGrath, Inc.	M. A. Mortenson Company	Metal Roof and Wall Panels	46,611.8	18,129.0
MG McGrath, Inc.	Wilkie Sanderson	Metal Roof and Wall Panels	379.0	0.0
Michels Corporation	Rams Contracting, LTD.	Site Remediation, Piles Caissons	473.0	189.0
Michels Corporation	M. A. Mortenson Company	Dynamic Compaction and Deep Foundations/Piles	7,245.0	2,904.5
Mid State Traffic Control, Inc.	M. A. Mortenson Company	Traffic Control	4.0	0.0
Mortl Restoration, Inc.	Spancrete, Inc.	Restoration	7,332.0	4,669.5
Mountain Products, Inc.	Parsons Electric LLC	Exercise Equipment	1,583.0	0.0
Northern Illinois Terrazzo & Tile Company	M. A. Mortenson Company	Commercial Tile/Flooring	7,765.5	1,494.0

Table continued on next page

Wisconsin Entertainment and Sports Center: RPP Inclusion (Continued)

Table 12 - Wisconsin Entertainment and Sports Center: RPP Inclusion by Contractor through March 31, 2018 - Continued

CONTRACTOR	SUBCONTRACTOR TO	SERVICE PERFORMED	WORKFORCE HOURS	RPP INCLUSION HOURS THROUGH 3/31/18
Northway Fence, Inc.	M. A. Mortenson Company	Temporary Fence/ Installation	128.0	0.0
Onyx, Inc.	Pieper Electric, Inc./DAS, LLC	Data Antenna System	328.0	0.0
P.L. Freeman Co.	Grunau Company, Inc.	Plumbing/HVAC	4,411.8	1,419.5
P.L. Freeman Co.	Hooper Corporation	Plumbing/HVAC	4,273.3	4,273.3
P.L. Freeman Co.	Langer Roofing & Sheet Metal Inc.	Plumbing/HVAC	1,668.0	1,668.0
P.L. Freeman Co.	Stafford-Smith Inc.	Plumbing/HVAC	608.0	608.0
Payne & Dolan, Inc.	Rams Contracting, LTD.	Earthwork/Site Utilities	147.3	11.0
Pieper Electric, Inc.	Johnson Controls, Inc./ DAS, LLC	Electrical	7,140.5	1,029.0
Pieper Electric, Inc. dba Pro Lightning Protection	Staff Electric Co., Inc.	Electrical	288.0	0.0
PJ's Trucking, LLC	D.F. Tomasini Contractors, Inc.	Trucking	125.3	0.0
Price Erecting	Grunau Company, Inc.	Steel Erection	2,865.5	0.0
Price Erecting	J.P. Cullen & Sons, Inc.	Rigging/Erecting	2,843.0	0.0
Rams Contracting, LTD.	M. A. Mortenson Company	Earthwork/Site Utilities	15,528.8	5,923.3
Rams Contracting, LTD.	Ice Builders, Inc.	Earthwork/Site Utilities	103.8	25.3
Rockwell Mechanical	Grunau Company, Inc.	HVAC	1,442.5	1,442.5
Sid's Sealants LLC	Arteaga Construction, Inc.	Caulking/Waterproofing	2,323.0	1,007.0
Sid's Sealants LLC	Egan Company	Caulking/Waterproofing	2,397.0	1,070.0
Sid's Sealants LLC	Langer Roofing & Sheet Metal Inc.	Caulking/Waterproofing	503.5	0.0
Sid's Sealants LLC	Wall-Tech, Inc.	Caulking/Waterproofing	4,098.1	1,796.3
Sid's Sealants LLC	M. A. Mortenson Company	Caulking/Waterproofing	9.1	9.1
Sonag Company, Inc.	Common Links Construction, LLC	Concrete Pouring	6,265.5	5,233.5
Sopinski Trenching & Excavating, LLC	Staff Electric Co., Inc	Excavating	2,655.0	0.0
South Star, Inc.	Rams Contracting, LTD.	Trucking	776.5	430.0
Sports Facility Acoustics Inc	M. A. Mortenson Company	Acoustical installer	572.0	0.0
SPE Inc.	Grunau Company, Inc.	Steel/ Precast/ Crane Erection	274.0	118.5

Table continued on next page

Wisconsin Entertainment and Sports Center: RPP Inclusion (Continued)

Table 12 - Wisconsin Entertainment and Sports Center: RPP Inclusion by Contractor through March 31, 2018 - Continued

CONTRACTOR	SUBCONTRACTOR TO	SERVICE PERFORMED	WORKFORCE HOURS	RPP INCLUSION HOURS THROUGH 3/31/18
Staff Electric Co., Inc.	Daktronics, Inc.	Electrical	3,418.0	1,626.0
Staff Electric Co., Inc.	Johnson Controls, Inc.	Electrical	80,355.8	35,877.8
Staff Electric Co., Inc.	Johnson Controls, Inc./ DAS, LLC	Electrical	1,351.5	669.0
Staff Electric Co., Inc.	M. A. Mortenson Company	Electrical	187,378.8	100,008.0
Staff Electric Co., Inc.	Parsons Electric LLC	Electrical	15,892.8	6,566.5
Superl, Inc.	Egan Company	Commercial Insulation	250.0	0.0
Theresa Tremmel Trucking, LLC	Rams Contracting, LTD.	Trucking	3,158.8	2,477.0
Thomas A. Mason Company, Inc.	M. A. Mortenson Company	Painting/Flooring	40,230.4	18,429.1
Tiffin Scenic Studios, Inc.	M. A. Mortenson Company	Stage Equipment Installation	166.0	0.0
Total Mechanical, Inc.	Stafford-Smith Inc.	Mechanical/Plumbing	682.5	284.0
Tremmel - Anderson Trucking, LLC	Veit & Company, Inc.	Trucking	47.8	30.5
Uihlein Electric Co., Inc.	Ice Builders, Inc.	Electrical	269.0	101.0
Uihlein Electric Co., Inc.	Johnson Controls, Inc.	Electrical	12,385.0	3,942.0
United Construction & Fence LLC	Northway Fence, Inc.	Temporary Fence/ Installation	577.5	577.5
United Landshapers	M. A. Mortenson Company	Commerical Landscape	215.8	50.5
United States Alliance Fire Protection Inc.	M. A. Mortenson Company	Fire Protection	14,499.3	7,752.8
United States Alliance Fire Protection Inc.	Starfire Extinguisher Co - Stafford-Smith Inc.	Fire Protection	181.0	0.0
Veit & Company, Inc.	M. A. Mortenson Company	Demolition/Abatement	358.0	301.5
W.L. Hall Co.	JCP Construction LLC	Interior Building Systems/Exterior Finishes	120.0	0.0
Wall-Tech, Inc.	M. A. Mortenson Company	Structural & Metal Stud Framing	145,411.3	47,856.0
Zone Mechanical North LLC	Stafford-Smith Inc.	Commercial Refrigeration/HVAC	3,105.0	0.0
TOTAL WORKFORCE HOURS			1,420,889.6	602,058.6
RPP PERCENTAGE REQUIREMENT			40.0%	
RPP PERCENTAGE TO DATE				42.4%

Wisconsin Entertainment and Sports Center: RPP Inclusion by Zip Code & Trade

Table 13 - Wisconsin Entertainment and Sports Center: RPP Inclusion by Zip Code & Trade

Trade	# OF RPP WORKERS	ZIP CODE	TOTAL RPP HOURS THROUGH 3/31/18
Acoustic Ceiling Tile Installer	1	53202	963.5
	1	53206	265.5
	2	53207	323.5
	1	53208	384.0
	2	53209	1,251.0
	2	53210	1,137.5
	1	53212	667.0
	1	53214	145.5
	2	53215	136.5
	1	53216	299.5
	1	53218	38.5
	2	53219	1,004.0
	1	53223	1,149.0
	1	53233	786.0
Bricklayer	1	53204	1,515.5
	1	53207	1,904.0
	1	53210	1,615.5
	1	53216	1,738.0
	1	53219	69.0
	1	53221	2,059.0
	1	53223	463.0
	1	53233	1,060.5
Carpenter	4	53204	4,319.5
	3	53206	4,417.3
	6	53207	5,618.8
	5	53208	3,674.0

Table continued on next page

Wisconsin Entertainment and Sports Center: RPP Inclusion by Zip Code & Trade (Continued)

Table 13 - Wisconsin Entertainment and Sports Center: RPP Inclusion by Zip Code & Trade - Continued

Trade	# OF RPP WORKERS	ZIP CODE	TOTAL RPP HOURS THROUGH 3/31/18
Carpenter (Continued)	8	53209	6,917.5
	6	53210	3,661.9
	4	53212	3,335.7
	1	53213	544.0
	16	53215	11,372.5
	4	53216	2,930.5
	5	53218	2,062.0
	2	53219	3,256.0
	4	53220	3,142.8
	11	53221	7,318.5
	4	53222	4,328.8
	3	53223	6,323.5
	4	53225	1,279.0
	2	53227	1,580.3
	1	53228	2,564.0
1	53233	1,157.5	
Carpet Layer/Soft Floor Coverer	1	53208	421.0
	1	53215	705.5
Cement Finisher	3	53205	3,427.5
	2	53207	768.5
	1	53209	21.0
	2	53216	139.0
	1	53218	536.0
	1	53219	21.5
	1	53220	66.5
	1	53223	1,148.5
	1	53224	971.0

Table continued on next page

Wisconsin Entertainment and Sports Center: RPP Inclusion by Zip Code & Trade (Continued)

Table 13 - Wisconsin Entertainment and Sports Center: RPP Inclusion by Zip Code & Trade - Continued

Trade	# OF RPP WORKERS	ZIP CODE	TOTAL RPP HOURS THROUGH 3/31/18
Drywall Taper/Finisher	1	53202	609.0
	1	53204	259.5
	2	53207	2,981.5
	1	53208	891.0
	1	53209	91.5
	11	53215	12,834.5
	1	53219	1,309.5
	2	53220	920.0
	1	53221	305.5
Electrician	3	53202	2,886.8
	4	53204	3,533.8
	4	53205	3,509.3
	3	53206	2,945.0
	19	53207	20,129.3
	7	53208	5,515.5
	4	53209	3,155.8
	7	53210	6,298.0
	2	53211	2,103.8
	4	53212	2,146.5
	3	53214	3,547.0
	7	53215	9,219.5
	4	53216	6,559.0
	5	53218	10,845.8
	7	53219	9,441.8
6	53220	13,518.8	
14	53221	19,913.8	
6	53222	5,863.0	

Table continued on next page

Wisconsin Entertainment and Sports Center: RPP Inclusion by Zip Code & Trade (Continued)

Table 13 - Wisconsin Entertainment and Sports Center: RPP Inclusion by Zip Code & Trade - Continued

Trade	# OF RPP WORKERS	ZIP CODE	TOTAL RPP HOURS THROUGH 3/31/18
Electrician (Continued)	4	53223	3,297.8
	3	53224	2,069.8
	1	53225	662.0
	1	53228	55.5
Fence Erector	1	53204	264.5
	2	53215	148.5
	1	53220	164.5
Fire Sprinkler Fitter	1	53208	1,898.5
	1	53212	1,507.0
	1	53214	1,992.5
	1	53220	884.0
Glazier	1	53209	243.3
	2	53212	2,280.0
	1	53216	58.0
	1	53219	1,381.8
	1	53233	1,285.8
Heat or Frost Insulator	1	53202	768.5
	1	53204	139.0
	1	53206	373.0
	1	53207	1,112.0
	1	53213	1,399.0
	4	53215	4,662.5
	1	53216	1,986.0
	1	53219	234.5
	2	53221	3,244.5
2	53227	1,922.0	

Table continued on next page

Wisconsin Entertainment and Sports Center: RPP Inclusion by Zip Code & Trade (Continued)

Table 13 - Wisconsin Entertainment and Sports Center: RPP Inclusion by Zip Code & Trade - Continued

Trade	# OF RPP WORKERS	ZIP CODE	TOTAL RPP HOURS THROUGH 3/31/18
Heavy Equipment Operator	1	53207	47.0
	1	53209	169.5
	1	53210	132.5
	1	53215	11.0
	2	53218	679.3
	5	53219	4,076.0
	1	53224	978.5
Ironworker	1	53202	1,634.0
	1	53203	1,630.5
	4	53204	2,048.5
	3	53206	1,325.5
	3	53207	1,530.3
	7	53208	4,497.5
	1	53209	49.5
	3	53210	987.5
	3	53211	3,159.0
	5	53212	4,177.0
	3	53213	2,882.5
	11	53215	8,808.0
	1	53216	1,572.0
	1	53218	999.0
	5	53219	4,041.3
	2	53220	364.5
	4	53221	1,679.0
2	53222	152.0	
1	53223	1,144.5	
1	53224	132.0	

Table continued on next page

Wisconsin Entertainment and Sports Center: RPP Inclusion by Zip Code & Trade (Continued)

Table 13 - Wisconsin Entertainment and Sports Center: RPP Inclusion by Zip Code & Trade - Continued

Trade	# OF RPP WORKERS	ZIP CODE	TOTAL RPP HOURS THROUGH 3/31/18
Ironworker (Continued)	5	53225	3,382.0
	1	53227	302.5
	2	53228	1,853.0
Laborer	1	53203	2,830.5
	7	53204	4,689.5
	1	53206	1,362.0
	6	53207	3,573.3
	5	53208	4,396.5
	9	53209	8,750.5
	3	53210	1,698.0
	3	53211	1,665.8
	7	53212	8,565.0
	1	53213	3,440.0
	1	53214	1,326.5
	16	53215	9,469.8
	11	53216	6,246.5
	9	53218	11,081.0
	4	53219	2,392.0
	5	53220	2,896.0
	5	53221	4,656.8
	3	53222	416.0
	1	53224	8.5
	7	53225	7,062.8
1	53228	881.0	
1	53233	275.5	
Painter	1	53206	261.5
	1	53207	7.0

Table continued on next page

Wisconsin Entertainment and Sports Center: RPP Inclusion by Zip Code & Trade (Continued)

Table 13 - Wisconsin Entertainment and Sports Center: RPP Inclusion by Zip Code & Trade - Continued

Trade	# OF RPP WORKERS	ZIP CODE	TOTAL RPP HOURS THROUGH 3/31/18
Painter (Continued)	1	53208	412.0
	1	53210	112.0
	1	53212	1,170.0
	2	53214	2,468.5
	2	53215	1,139.8
	3	53216	2,235.0
	2	53219	511.0
	1	53220	448.3
	1	53222	97.0
	1	53224	727.5
	1	53225	349.0
Piledriver	1	53206	143.0
	1	53216	183.0
Plasterer	1	53225	959.5
Plumber	1	53207	849.5
	1	53208	1,048.0
	2	53209	4,262.2
	4	53210	9,050.8
	1	53211	563.8
	1	53212	1,635.3
	1	53215	2,290.5
	1	53216	1,787.5
	2	53218	1,091.3
	2	53219	1,162.5
	1	53223	607.6
1	53225	375.0	

Table continued on next page

Wisconsin Entertainment and Sports Center: RPP Inclusion by Zip Code & Trade (Continued)

Table 13 - Wisconsin Entertainment and Sports Center: RPP Inclusion by Zip Code & Trade - Continued

Trade	# OF RPP WORKERS	ZIP CODE	TOTAL RPP HOURS THROUGH 3/31/18	
Project Engineer	2	53211	1,616.0	
	1	53212	347.5	
Roofer	1	53206	299.0	
	4	53207	3,145.3	
	1	53208	1,118.5	
	2	53209	700.5	
	2	53210	1,577.0	
	1	53212	274.0	
	1	53213	20.0	
	1	53214	26.0	
	2	53215	1,655.5	
	4	53219	1,465.5	
	1	53221	512.0	
	1	53222	1,831.5	
	1	53223	1,174.0	
	Sheet Metal Worker	2	53202	1,511.5
		1	53204	1,032.0
5		53207	5,179.0	
1		53208	1,640.0	
1		53209	172.5	
2		53210	842.5	
2		53212	1,716.8	
4		53215	2,819.5	
2		53216	2,354.0	
5		53218	5,756.5	
1	53219	1,584.5		
4	53220	6,903.3		

Table continued on next page

Wisconsin Entertainment and Sports Center: RPP Inclusion by Zip Code & Trade (Continued)

Table 13 - Wisconsin Entertainment and Sports Center: RPP Inclusion by Zip Code & Trade - Continued

Trade	# OF RPP WORKERS	ZIP CODE	TOTAL RPP HOURS THROUGH 3/31/18
Sheet Metal Worker (Continued)	3	53221	3,225.0
	1	53222	2,086.0
	1	53223	530.0
	1	53224	1,267.0
	1	53225	617.0
	2	53227	2,825.0
	1	53228	1,327.3
Steamfitter	1	53202	1,720.0
	2	53204	2,572.8
	1	53207	2,101.0
	1	53209	1,177.0
	2	53210	553.5
	1	53212	869.5
	2	53213	5,074.0
	1	53214	978.3
	1	53218	776.5
	3	53219	2,177.0
	1	53220	101.0
	3	53221	2,193.5
	1	53224	441.0
	1	53225	1,966.0
	1	53227	1,428.5
1	53228	549.5	
Teledata Installer	3	53207	1,538.0
	1	53209	1,436.5
	3	53210	1,816.5
	3	53212	1,287.5

Table continued on next page

Wisconsin Entertainment and Sports Center: RPP Inclusion by Zip Code & Trade (Continued)

Table 13 - Wisconsin Entertainment and Sports Center: RPP Inclusion by Zip Code & Trade - Continued

Trade	# OF RPP WORKERS	ZIP CODE	TOTAL RPP HOURS THROUGH 3/31/18
Teledata Installer (Continued)	2	53214	291.3
	5	53215	3,955.0
	2	53216	463.5
	3	53218	1,314.5
	1	53219	972.5
	2	53220	1,862.5
	5	53221	4,826.3
	2	53222	2,296.5
	1	53233	29.0
	2	53225	1,625.5
Terrazzo Finisher	1	53215	784.0
	1	53221	710.0
Tile Setter	1	53204	440.5
	3	53208	1,307.0
	1	53209	310.0
	1	53215	1,363.8
	2	53216	1,082.0
	1	53219	764.0
	1	53220	151.5
	1	53221	921.0
	2	53222	1,017.0
3	53225	1,730.0	
Tuckpointer	1	53206	322.5
	1	53208	876.0
	1	53209	1,140.0
	2	53212	1,471.0

Table continued on next page

Wisconsin Entertainment and Sports Center: RPP Inclusion by Zip Code & Trade (Continued)

Table 13 - Wisconsin Entertainment and Sports Center: RPP Inclusion by Zip Code & Trade - Continued

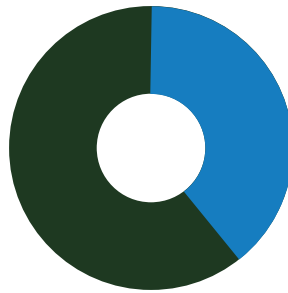
Trade	# OF RPP WORKERS	ZIP CODE	TOTAL RPP HOURS THROUGH 3/31/18
Tuckpointer (Continued)	4	53215	1,931.8
	1	53216	710.5
Truck Driver	2	53204	99.0
	2	53205	154.3
	3	53206	48.8
	2	53207	461.5
	2	53208	35.8
	12	53209	434.5
	7	53210	1,769.3
	1	53211	40.5
	2	53212	57.5
	8	53215	323.8
	6	53216	856.8
	7	53218	188.5
	3	53219	150.3
	1	53220	9.8
	3	53221	21.5
	3	53222	999.3
	4	53223	201.5
1	53224	21.8	
6	53225	573.0	
	759	TOTAL	602,058.6

5th Street Parking Structure: RPP Inclusion

Table 14 - 5th Street Parking Structure: RPP Inclusion through March 31, 2018

Total Construction Hours	164,738.0
RPP Target Based on Total Hours (multiplied by 40%)	65,895.2
Applicable RPP Goal	40.0%
Total RPP Construction Hours	65,855.8
RPP Hours Above (Below) Goal	(39.4)
RPP Percentage (Total RPP Construction Hours/Total Construction Hours Worked)	40.0%

5th Street Parking Structure Residents Preference Program (RPP) Inclusion



- **40.0% RPP Participation**
65,855.8 Total RPP Hours
 - **60.0% Non-RPP Participation**
98,882.2 Total Non-RPP Hours
- 164,738.0 Total Workforce Hours

Table 15 - 5th Street Parking Structure RPP Inclusion (excluding Non-Wisconsin residents) through March 31, 2018

Total Construction Hours	164,738.0
Less Hours Worked by Non-Wisconsin Residents	2,283.0
Construction Hours Worked by Wisconsin Residents Only	162,455.0
RPP Construction Hours	65,855.8
RPP Participation Percentage (Excluding Non-Wisconsin residents)	40.5%

Milwaukee Code of Ordinances (MCO) Section 355-7(1)(a) notes that for the purpose of calculating RPP participation "...'worker hours'... excludes the number of hours of work performed by all non-Wisconsin residents."

5th Street Parking Structure: RPP Inclusion by Contractor

Table 16 - 5th Street Parking Structure: RPP Inclusion by Contractor through March 31, 2018

CONTRACTOR	SUBCONTRACTOR TO	SERVICE PERFORMED	WORKFORCE HOURS	RPP INCLUSION HOURS THROUGH 3/31/18
J.H. Findorff & Son Inc.	General Contractor	CIP Foundations	11,520.0	4,945.5
3G Trucking, LLC	Lake Edge Logistics, LLC	Trucking	19.0	19.0
Austad & Son, Inc.	J.H. Findorff & Son Inc.	Acoustical Tile Contractor	48.0	0.0
Automated Parking Technologies, LLC	J.H. Findorff & Son Inc.	Automated Parking	257.0	0.0
Best Erectors, Inc.	Midwest Stairs & Iron, Inc.	Structural Steel	3,496.5	2,088.0
Bohmann & Vick, Inc.	J.H. Findorff & Son Inc.	Utilities	484.5	186.5
Breezy Hill Nursery, Inc.	J.H. Findorff & Son Inc.	Landscape Services	180.1	0.0
C.G. Schmidt, Inc.	J.H. Findorff & Son Inc.	CIP Structure	73,228.8	31,904.0
Choice Construction Companies, Inc.	J.H. Findorff & Son Inc.	Install, Reinforcing Steel/ Bridge Work	25,544.5	10,690.5
Concrete & Masonry Restoration, LLC	J.H. Findorff & Son Inc.	Concrete and Masonry Resurfacing	842.3	122.5
David's M Trucking LLC	Guin's Trucking LLC	Trucking	7.2	7.2
Dawes Rigging & Crane Rental, Inc.	Egan Company	Crane Rental	162.5	0.0
Duwe Metal Products, Inc.	J.P. Cullen & Sons, Inc.	Metal Fabricating	2,621.5	812.0
Dywidag Systems Int'l USA, Inc.	Midwest Stairs & Iron, Inc.	Post Tensioning	99.5	49.0
Earth Augering Service LLC	Lemberg Electric Company, Inc.	Trenching	133.0	0.0
Edgerton Contractors, Inc.	J.H. Findorff & Son Inc.	Earthwork	2,888.0	437.3
EFH Trucking LLC	Lake Edge Logistics, LLC	Trucking	321.2	321.2
Express Insulation, Inc.	J.F. Ahern Co.	Insulation	196.0	150.0
Gonzalez E LLC	EFH Trucking LLC	Trucking	402.8	384.0
Guin's Trucking LLC	EFH Trucking LLC	Trucking	22.0	22.0
Hard Rock Sawing & Drilling Specialists Company	CG Schmidt, Inc.	Deep Sawing	19.0	0.0
Hennes Services, Inc.	Lemberg Electric Company, Inc.	Electrical	28.5	0.0
Hetzel-Sanfilippo, Inc.	Langer Roofing & Sheet Metal Inc.	Gypsum wallboard	833.5	517.0
Hiram Power Electric, LLC	Staff Electric Co., Inc.	Electrical	129.0	129.0
Hurt Electric, Inc.	Uihlein Electric Co., Inc.	Underground Electrical	246.5	246.5
HVA Products, Inc.	J.F. Ahern Co.	General Contracting	189.5	0.0

Table continued on next page

5th Street Parking Structure: RPP Inclusion by Contractor (Continued)

Table 16 - 5th Street Parking Structure: RPP Inclusion by Contractor through March 31, 2018 - Continued

CONTRACTOR	SUBCONTRACTOR TO	SERVICE PERFORMED	WORKFORCE HOURS	RPP INCLUSION HOURS THROUGH 3/31/18
Illinois Facility Maintenance, Inc.	J.H. Findorff & Son Inc.	Janitorial Service	96.0	0.0
J.F. Ahern Co.	J.H. Findorff & Son Inc.	Plumbing/HVAC/Fire Protection	4,479.0	1,080.5
J.F. Cook Co., Inc.	J.H. Findorff & Son Inc.	Overhead Garage Door Installation	28.5	0.0
J.P. Anthony, Inc.	Uihlein Electric Co., Inc.	Concrete Cutting	6.5	0.0
JCP Construction LLC	J.H. Findorff & Son Inc.	General Contracting	595.8	172.8
Keen Trucking LLC	EFH Trucking LLC	Trucking	19.4	19.4
Kenwood Company	J.H. Findorff & Son Inc.	Sealants and Traffic Coating	234.0	70.0
Klein-Dickert Milwaukee, Inc.	J.H. Findorff & Son Inc.	Glass/Glazing	2,024.0	565.5
KMI Construction LLC	J.H. Findorff & Son Inc.	Masonry/Precast	9,702.0	4,448.0
Kone, Inc.	J.H. Findorff & Son Inc.	Elevator	1,675.0	0.0
Langer Roofing & Sheet Metal Inc.	J.H. Findorff & Son Inc.	Roofing	1,528.0	365.5
Lemberg Electric Company, Inc.	J.H. Findorff & Son Inc.	Electrical	9,533.3	3,298.5
Lippert Flooring and Tile	J.H. Findorff & Son Inc.	Flooring & Tile	198.5	0.0
Luz Mercado Trucking, Inc.	EFH Trucking LLC	Trucking	235.0	0.0
MCE Trucking LLC	EFH Trucking LLC	Trucking	26.2	26.2
Michels Corporation	J.H. Findorff & Son Inc.	Piles	1,769.0	673.0
Monos Trucking LLC	EFH Trucking LLC	Trucking	17.5	17.5
Mortl Restoration, Inc.	KMI Construction LLC	Restoration	112.5	19.0
Munson, Inc.	J.H. Findorff & Son Inc.	Fencing and Paving	109.0	35.5
Parking Lot Maintenance, Inc.	Stark Asphalt Service, Inc.	Asphalt and Concrete Paving	656.0	0.0
Poblocki Sign Company LLC	J.H. Findorff & Son Inc.	Signage	320.5	0.0
Potratz Concrete Pumping South, Inc.	CG Schmidt, Inc.	Concrete Pumping	366.0	0.0
Pro-Therm Insulation, Inc.	KMI Construction LLC	Insulation	69.0	0.0
Ram's Trucking LLC	EFH Trucking LLC	Trucking	15.8	0.0
Regency Janitorial Service, Inc.	J.H. Findorff & Son Inc.	Janitorial Service	377.0	160.8
Renegade Trucking, LLC	Lake Edge Logistics, LLC	Trucking	7.0	7.0

Table continued on next page

5th Street Parking Structure: RPP Inclusion by Contractor (Continued)

Table 16 - 5th Street Parking Structure: RPP Inclusion by Contractor through March 31, 2018 - Continued

CONTRACTOR	SUBCONTRACTOR TO	SERVICE PERFORMED	WORKFORCE HOURS	RPP INCLUSION HOURS THROUGH 3/31/18
RTA Trucking LLC	EFH Trucking LLC	Trucking	40.6	40.6
Sanchez Painting Contractors, Inc.	J.H. Findorff & Son Inc.	Painting	2,594.0	799.0
Sciachitano Caulking, Inc.	J.H. Findorff & Son Inc.	Caulking	520.0	0.0
South Star, Inc.	Lake Edge Logistics, LLC	Trucking	76.8	68.0
Staff Electric Co., Inc.	J.H. Findorff & Son Inc.	Electrical	1,138.5	491.0
Stark Asphalt Service Inc.	J.H. Findorff & Son Inc.	Asphalt Paving	890.3	386.0
Steve's Trenching Service, Inc.	Uihlein Electric Co., Inc.	Trenching	103.5	0.0
Terminal-Andrae, Inc.	J.F. Ahern Co.	Electrical	49.0	0.0
Uihlein Electric Co., Inc.	CG Schmidt, Inc.	Underground Electrical	729.0	81.0
Wahlen Corp.	J.H. Findorff & Son Inc.	Parking Lot Stripping	58.8	0.0
Zander Solutions, LLC	J.H. Findorff & Son Inc.	Waterproofing	49.0	0.0
Zenith Tech, Inc.	Edgerton Contractors, Inc.	Furnish & Install 26 Pipe Piling/ Earth Retention	368.0	0.0
TOTAL WORKFORCE HOURS			164,738.0	65,855.8
RPP PERCENTAGE REQUIREMENT			40.0%	
RPP PERCENTAGE TO DATE				40.0%

Worker installing electrical fixtures.



5th Street Parking Structure: RPP Inclusion by Zip Code & Trade

Table 17 - 5th Street Parking Structure: RPP Inclusion by Zip Code & Trade

Trade	# OF RPP WORKERS	ZIP CODE	TOTAL RPP HOURS THROUGH 3/31/18
Acoustic Ceiling	1	53204	27.0
Bricklayer, Blocklayer	2	53204	398.0
	2	53210	921.0
	1	53213	390.5
	1	53218	30.5
	1	53223	781.5
	1	53227	931.0
Carpenter	1	53202	1,498.0
	2	53206	386.0
	4	53207	2,775.5
	1	53208	384.5
	1	53209	836.5
	4	53210	1,849.3
	1	53211	6.0
	1	53212	7.0
	2	53213	2,568.0
	4	53215	2,554.0
	1	53216	806.0
	4	53219	1,124.0
	1	53221	458.5
	4	53222	5,263.5
	1	53224	1,523.5
Cement Finisher	1	53225	88.0
	2	53227	1,252.0
	2	53202	335.5
	1	53205	32.0

Table continued on next page

5th Street Parking Structure: RPP Inclusion by Zip Code & Trade (Continued)

Table 17 - 5th Street Parking Structure: RPP Inclusion by Zip Code & Trade - Continued

Trade	# OF RPP WORKERS	ZIP CODE	TOTAL RPP HOURS THROUGH 3/31/18
Cement Finisher	1	53207	760.5
	1	53209	1,110.0
	1	53210	32.0
	2	53215	214.0
	2	53219	1,172.5
	1	53223	38.0
	1	53224	944.5
Electrician	1	53207	162.5
	2	53218	165.0
	1	53215	2,165.5
	1	53220	1,133.0
Glazier	1	53209	123.0
	1	53212	8.0
	1	53220	434.5
Heat or Frost Insulator	1	53221	150.0
Heavy Equipment Operator	2	53207	214.5
	1	53215	118.5
	1	53224	112.5
Ironworker	1	53029	377.5
	4	53204	1,292.5
	3	53209	529.5
	2	53207	196.5
	5	53208	1,068.5
	3	53210	710.5
	2	53212	272.5
2	53213	129.0	

Table continued on next page

5th Street Parking Structure: RPP Inclusion by Zip Code & Trade (Continued)

Table 17 - 5th Street Parking Structure: RPP Inclusion by Zip Code & Trade - Continued

Trade	# OF RPP WORKERS	ZIP CODE	TOTAL RPP HOURS THROUGH 3/31/18
Ironworker	4	53215	3,194.5
	1	53218	144.5
	4	53219	2,201.5
	1	53220	20.0
	4	53221	897.8
	1	53222	930.5
	2	53223	345.8
	1	53227	864.0
	1	53233	475.5
Laborer	5	53204	379.3
	1	53205	30.0
	4	53207	2,116.5
	1	53208	816.5
	3	53209	1,071.0
	1	53210	18.0
	1	53211	102.8
	1	53213	2,063.5
	7	53215	1,762.0
	5	53216	1,540.5
	2	53218	11.0
	1	53219	205.0
	1	53223	138.0
	1	53224	88.0
Painter	1	53225	241.5
	1	53227	504.5
	3	53204	749.0
	1	53219	50.0

Table continued on next page

5th Street Parking Structure: RPP Inclusion by Zip Code & Trade (Continued)

Table 17 - 5th Street Parking Structure: RPP Inclusion by Zip Code & Trade - Continued

Trade	# OF RPP WORKERS	ZIP CODE	TOTAL RPP HOURS THROUGH 3/31/18
Piledriver	1	53206	261.5
Plumber	1	53204	263.0
	1	53210	547.0
	1	53225	56.0
Roofer or Waterproofer	1	53214	42.0
	2	53215	66.0
	2	53219	35.0
	1	53225	23.5
Sheet Metal Worker	1	53207	199.0
	1	53211	116.0
	1	53215	58.5
Steamfitter	1	53215	40.0
Teledata Technician or Installer	1	53214	456.5
	1	53216	129.0
	1	53221	11.5
	1	53222	11.5
	1	53225	11.5
Tuckpointer	1	53219	312.0
	2	53215	461.0
Truck Driver	1	53204	115.9
	1	53207	19.4
	1	53208	6.8
	1	53209	8.8
	3	53210	24.8
	1	53214	26.3
	11	53215	362.7
	1	53218	14.0

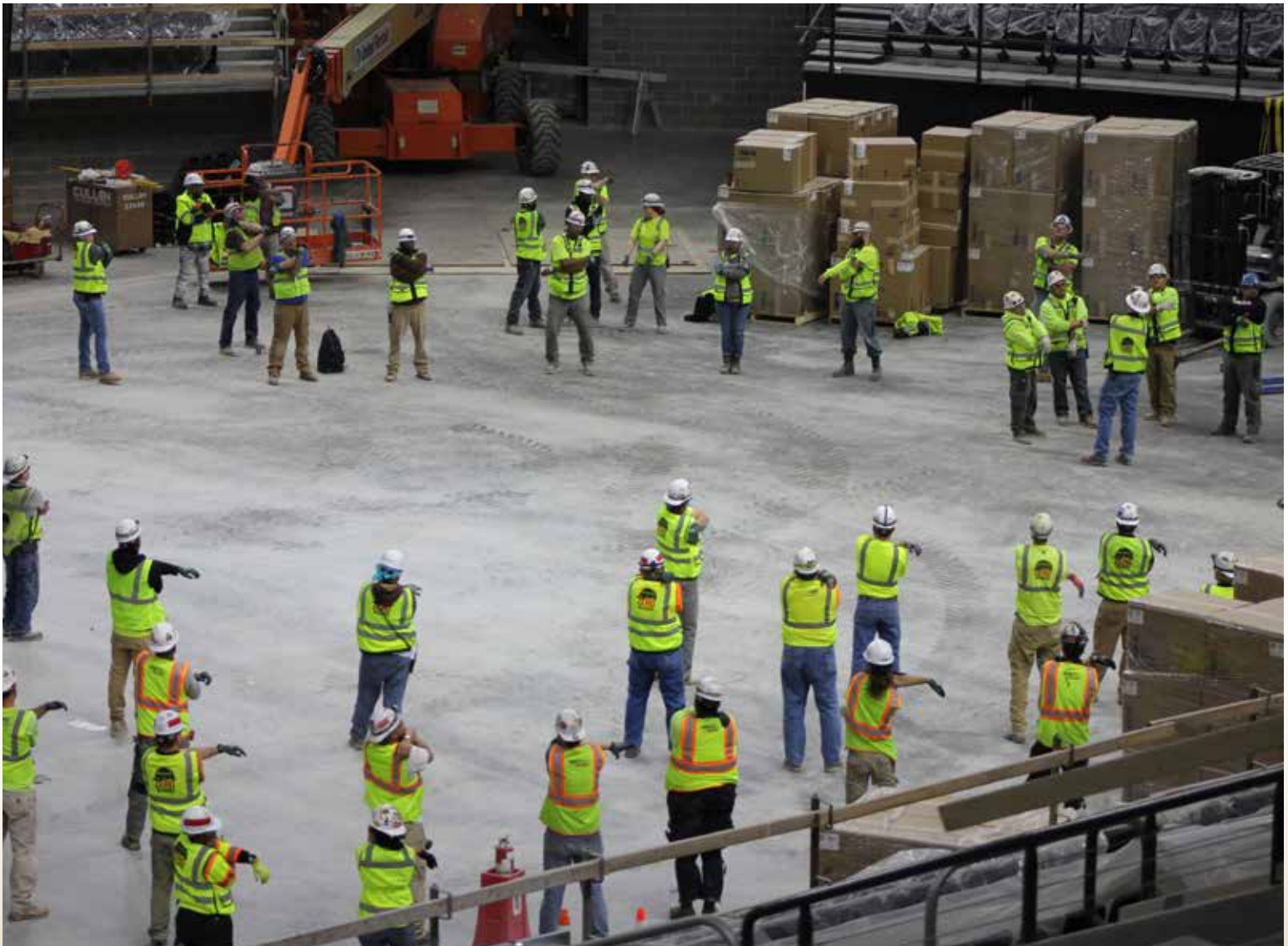
Table continued on next page

5th Street Parking Structure: RPP Inclusion by Zip Code & Trade (Continued)

Table 17 - 5th Street Parking Structure: RPP Inclusion by Zip Code & Trade - Continued

Trade	# OF RPP WORKERS	ZIP CODE	TOTAL RPP HOURS THROUGH
Truck Driver	2	53219	300.2
	2	53220	25.0
	1	53221	7.7
	1	53222	7.0
	2	53223	13.8
	200	TOTAL	65,855.8

Workers participating in daily morning exercises.

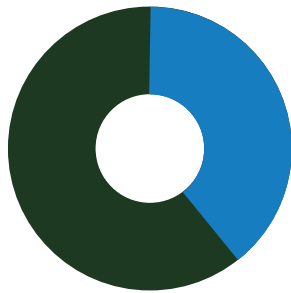


Public Plaza: RPP Inclusion

Table 18 - Public Plaza: RPP Inclusion through March 31, 2018

Total Construction Hours	12,843.3
RPP Target Based on Total Hours (multiplied by 40%)	5,137.3
Applicable RPP Goal	40.0%
Total RPP Construction Hours	5,148.4
RPP Hours Above (Below) Goal	11.0
RPP Percentage (Total RPP Construction Hours/Total Construction Hours Worked)	40.1%

Public Plaza Total Residents Preference Program (RPP) Inclusion



- **40.1% RPP Participation**
5,148.4 Total RPP Hours
 - **59.9% Non-RPP Participation**
7,695.0 Total Non-RPP Hours
- 12,843.3 Total Workforce Hours

Table 19 - Public Plaza: RPP Inclusion (excluding Non-Wisconsin residents) through March 31, 2018

Total Construction Hours	12,843.3
Less Hours Worked by Non-Wisconsin Residents	86.8
Construction Hours Worked by Wisconsin Residents Only	12,756.6
RPP Construction Hours	5,148.4
RPP Participation Percentage (Excluding non-Wisconsin residents)	40.4%

Milwaukee Code of Ordinances (MCO) Section 355-7(1)(a) notes that for the purpose of calculating RPP participation "...'worker hours'... excludes the number of hours of work performed by all non-Wisconsin residents."

Public Plaza : RPP Inclusion by Contractor

Table 20 - Public Plaza: RPP Inclusion by Contractor through March 31, 2018

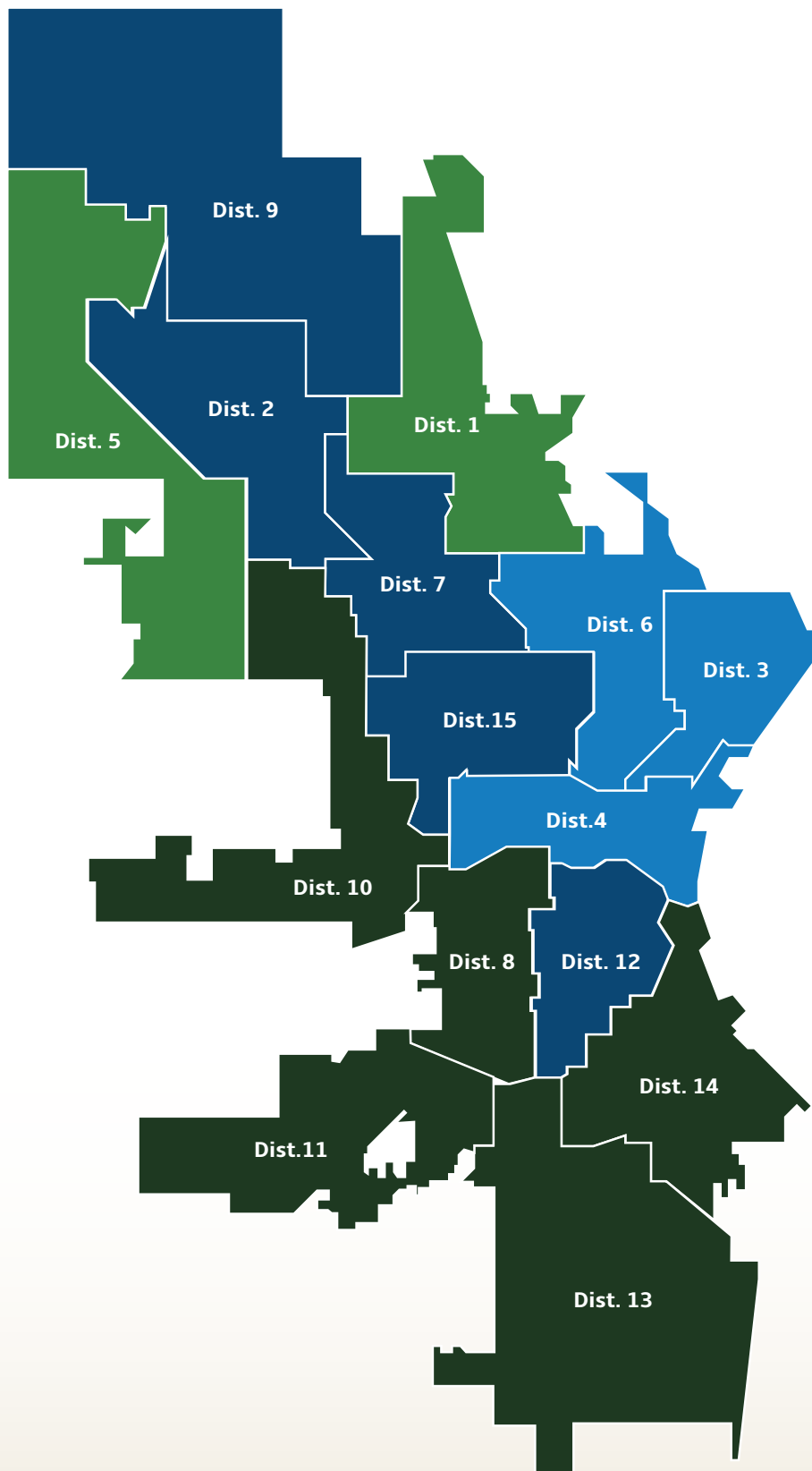
CONTRACTOR	SUBCONTRACTOR TO	SERVICE PERFORMED	WORKFORCE HOURS	RPP INCLUSION HOURS THROUGH 3/31/18
Hunzinger Construction Company	General Contractor	Construction Manager	80.5	40.0
Arteaga Construction, Inc.	Hunzinger Construction Company	Crane Rigging & Lifting Services	817.5	653.0
Cornerstone Plumbing, LLC	Hunzinger Construction Company	Plumbing	898.0	262.5
Flores Contractors, LLC	Hunzinger Construction Company	Erosion Control	3.0	0.0
Hard Rock Sawing & Drilling Specialist Co.	Rams Contracting, LTD.	Saw Cutting	112.5	7.5
Hard Rock Sawing & Drilling Specialist Co.	Spancrete, Inc.	Saw Cutting	271.0	0.0
Hurt Electric, Inc.	Staff Electric Co., Inc.	Electrical	99.0	40.0
J&J Contracting of MN, LLC	Hunzinger Construction Company	Environmental Remediation	54.8	0.0
Midwest Drilled Foundation & Engineering, Inc.	Hunzinger Construction Company	Deep Foundations	1,479.8	516.5
Pieper Electric, Inc.	Hunzinger Construction Company	Electrical	260.0	10.0
Rams Contracting, LTD.	Hunzinger Construction Company	Earthwork	1,904.8	627.8
Superior Masonry Builders	Hunzinger Construction Company	Masonry	1,178.0	414.5
Theresa Tremmel Trucking, LLC	Hunzinger Construction Company	Trucking	96.0	81.8
Tremmel - Anderson Trucking, LLC	Cornerstone Plumbing	Trucking	899.6	487.8
Veit & Company Inc.	Hunzinger Construction Company	Demolition	4,689.0	2,007.0
TOTAL WORKFORCE HOURS			12,843.3	5,148.4
RPP PERCENTAGE REQUIREMENT			40.0%	
RPP PERCENTAGE TO DATE				40.1%

Public Plaza: RPP Inclusion by Zip Code & Trade

Table 21 - Public Plaza: RPP Inclusion by Zip Code & Trade

Trade	# OF RPP WORKERS	ZIP CODE	TOTAL RPP HOURS THROUGH 3/31/18
Carpenter	1	53207	40.0
	1	53212	138.5
Cement Finisher	1	53206	203.0
Electrician	1	53208	10.0
	1	53207	40.0
Piledriver	1	53212	29.8
Truck Drivers	1	53204	144.5
	1	53206	5.8
	1	53207	39.5
	3	53209	113.5
	4	53210	249.1
	2	53215	28.8
	2	53218	87.0
	2	53221	52.3
	2	53222	66.8
	2	53223	38.3
Laborers	1	53224	19.8
	2	53225	16.8
	4	53215	1174.0
Heavy Equipment	1	53224	235.8
	2	53219	909.0
	1	53218	6.5
	3	53219	532.0
	1	53225	968.0
	41	TOTAL	5,148.4

RPP by Aldermanic Districts - All Projects



District Number	# of RPP Workers ³
District 1	61
District 2	49
District 3	33
District 4	17
District 5	69
District 6	39
District 7	56
District 8	97
District 9	45
District 10	85
District 11	138
District 12	55
District 13	111
District 14	94
District 15	56
Total	1005

Legend

- 0 - 40 RPP Workers
- 41 - 60 RPP Workers
- 61 - 80 RPP Workers
- 81+ RPP Workers

³Count represents unique number of workers. **Workers may work in multiple trades.

⁴Workers who moved during the project may be counted in multiple zip codes.

⁵The Official numbers of workers employed through the Residents Preference Program is 867.

This map shows district numbers. Refer to chart for number of RPP workers.

End of Report.