



Certificate of Appropriateness

Milwaukee Historic Preservation Commission/200 E. Wells Street/Milwaukee, WI 53202/phone 414-286-5712/fax 414-286-3004

Property	4259 W. FOND DU LAC AV. Sherman Boulevard Historic District
Description of work	Install three to four signs of size shown in location shown (conditions apply to Sherman Boulevard frontage). Signs must have a border or frame added around the perimeter of 1-3" of thickness (see example, page 4). This shall be painted in dark blue to match the sign colors or black. Border can be integral to the sign by enlarging the signs by the amount of the border or by reducing the size of text and graphics to incorporate the border. Frame can be wood or metal, but must be painted and not anodized (unless black).
Date issued	10/24/2017 PTS ID 114414 COA: two signs FDL facade

In accordance with the provisions of Section 320-21 (11) and (12) of the Milwaukee Code of Ordinances, the Milwaukee Historic Preservation Commission has issued a certificate of appropriateness for the work listed above. The work was found to be consistent with preservation guidelines. The following conditions apply to this certificate of appropriateness:

- 1. Signs may be reduced in size to meet sign code requirements without further Historic Preservation Review.**
- 2. Design for Sherman Boulevard was not presented; if it is identical to the other shown signs in design and equal or smaller in size, it is approved.**
- 3. Signs are assumed to be accurately scaled and must fit in the locations shown.**
- 4. Mounting posts shall be drilled into mortar joints only and not into the face of any brick or stone. Mounting to non-masonry materials is unrestricted**

All work must be done in a craftsman-like manner, and must be completed within one year of the date this certificate was issued. Staff must approve any changes or additions to this certificate before work begins. Work that is not completed in accordance with this certificate may

be subject to correction orders or citations. If you require technical assistance, please contact Historic Preservation staff as follows: Phone: (414) 286-5712 E-mail: HPC@milwaukee.gov.

If permits are required, you are responsible for obtaining them from the Milwaukee Development Center. If you have questions about permit requirements, please consult the Development Center's web site, www.milwaukee.gov/build, or call (414) 286-8210.



City of Milwaukee Historic Preservation Staff

Copies to: Development Center, Ald. K. Rainey, Contractor

Fond du Lac Ave Sign

Size: 36" h x 96" w

Material: 3mm Aluminum Composite Material

Face: digitally printed vinyl graphics

Installation: use tapcons to secure to brick



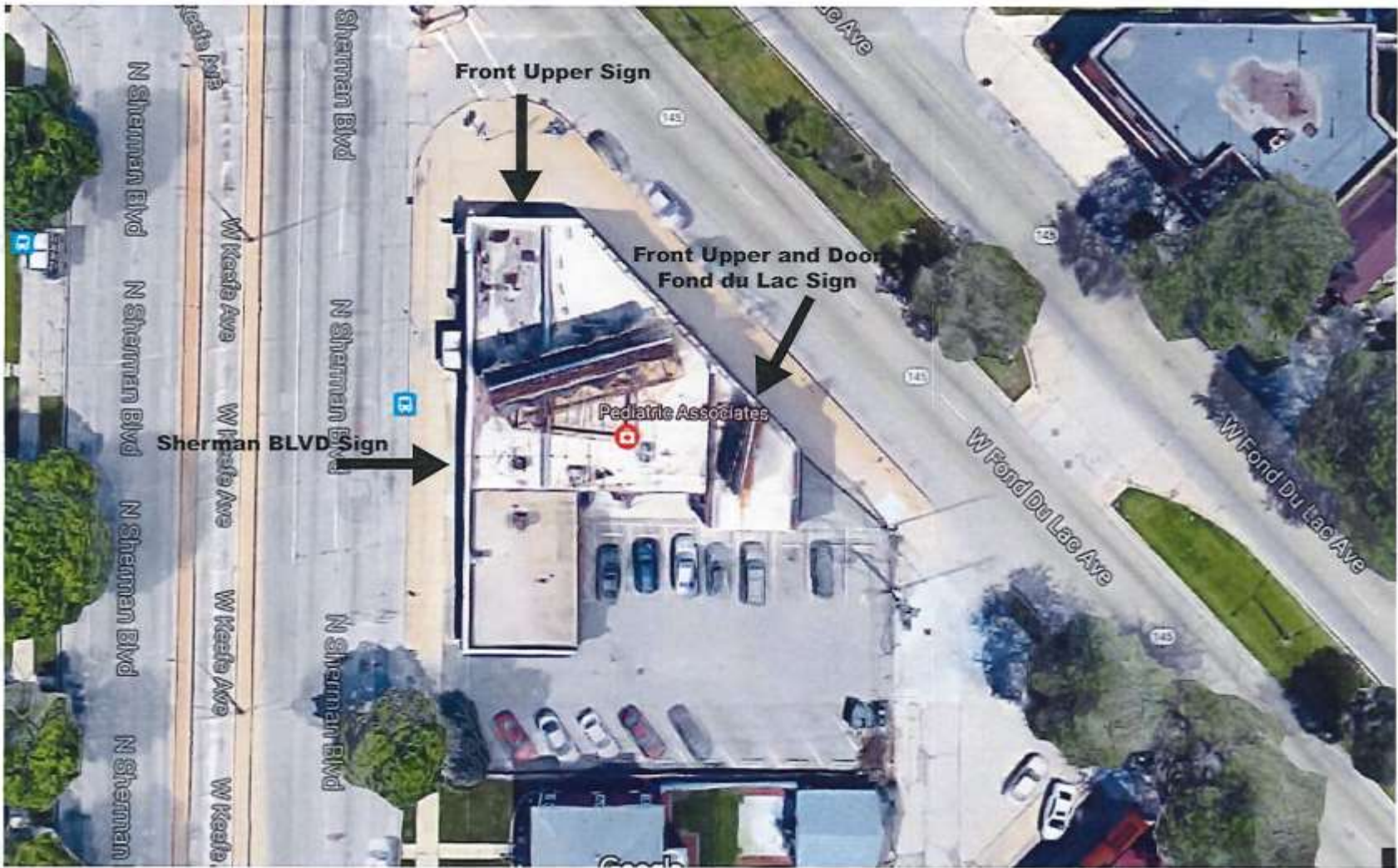
Fond du Lac avenue view with two signs. Both signs must be modified to include a border or frame, per page one. Signs are assumed to be accurately scaled and must fit in the locations shown.

36" x 96"

- 1- Bulding Front Upper Sign
- 2 - Fond du Lac Ave. Upper Sign



Shown with a potential border design. A border is required, but not necessarily as shown, see page one. All signs shall have a border or frame.



Proposed installation sites.