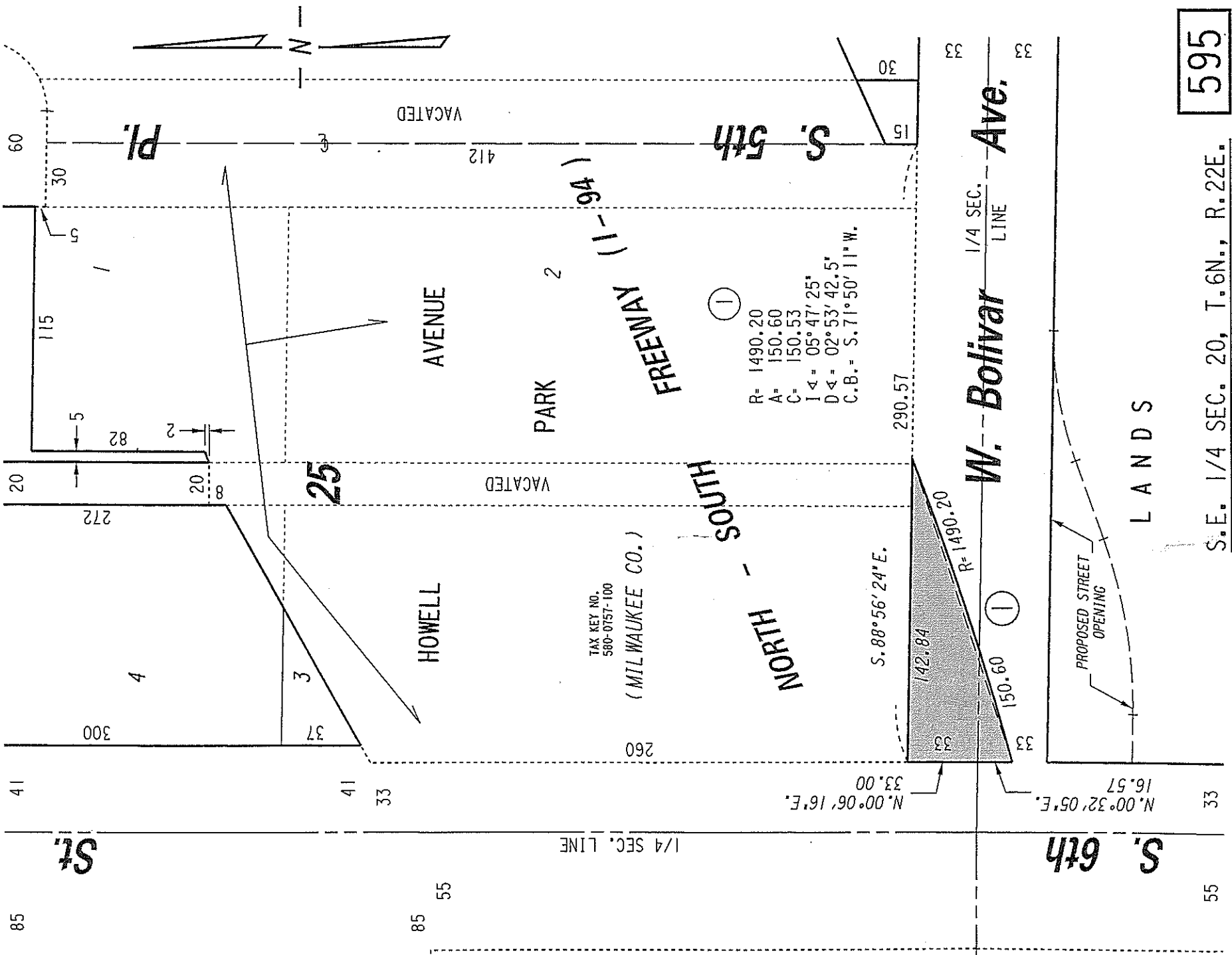


580

N.E. 1/4 SEC. 20, T.6N., R.22E.



595

S.E. 1/4 SEC. 20, T.6N., R.22E.

 PORTION OF PUBLIC STREET PROPOSED TO BE VACATED

EXHIBIT "A"
FILE NO. 090545
INFRASTRUCTURE SERVICES DIVISION

MILWAUKEE, WISCONSIN
 ASSIGNED TO: W.E. FUCHS
 CH'K'D. BY: W.E. FUCHS
 DRAWN BY: W.E.F.
 DATE: SEPT. 29, 2009
 PROJECT/GRANT NO.: WK52337282
 SCALE: 1" = 60'
 APPROVED BY:

Marcia Lindholm
 CENTRAL DRAFTING & RECORDS MANAGER
 CIVIL ENGINEER