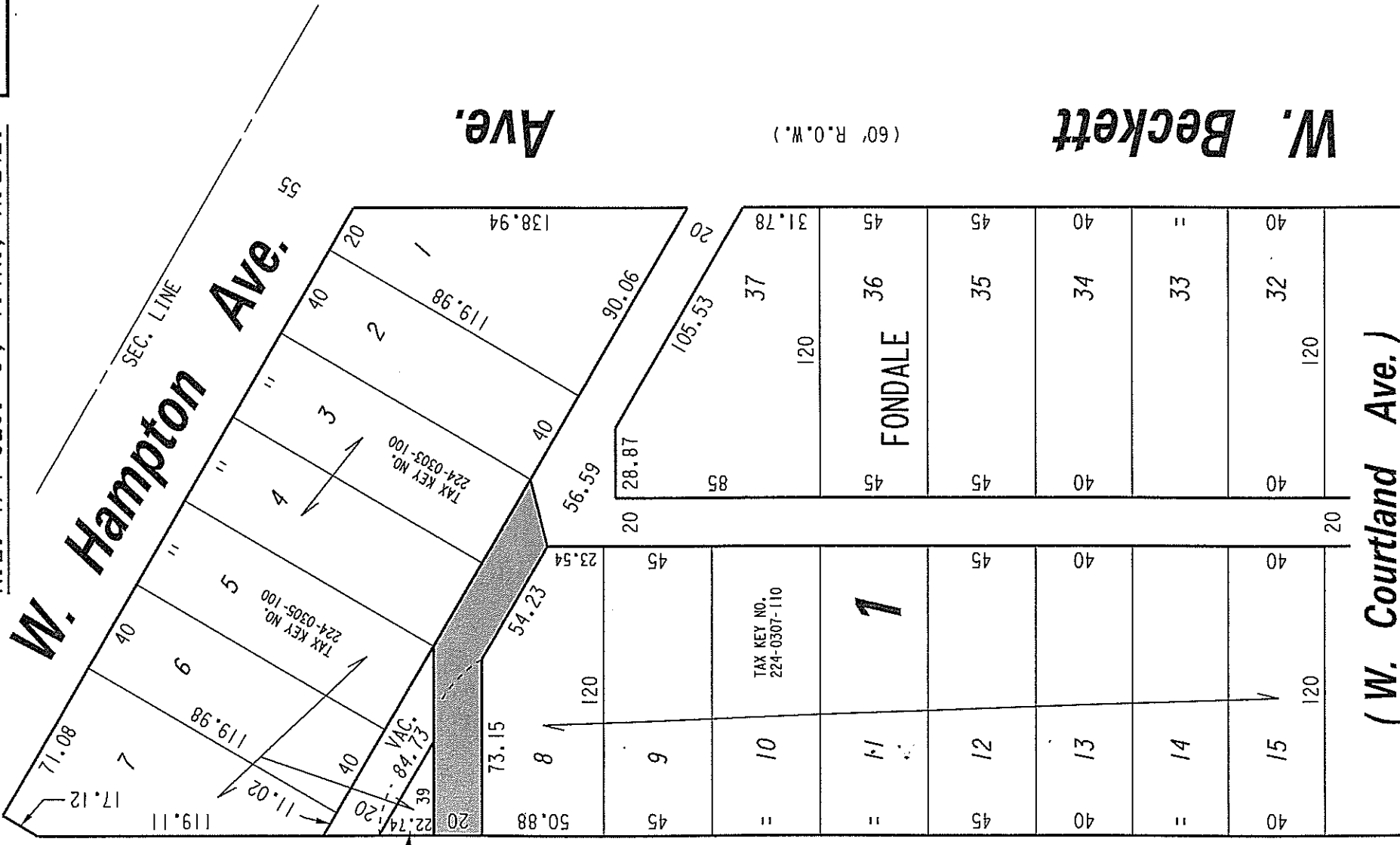


224

N.E. 1/4 SEC. 3, T.7N., R.21E.



Ave.

W. Hampton Ave.

Ave.

W. Appletton

W. Beckett

(W. Courtland Ave.)

PORTION OF PUBLIC ALLEY PROPOSED TO BE VACATED

EXHIBIT "A"
FILE NO. 080495

INFRASTRUCTURE SERVICES DIVISION

MILWAUKEE, WISCONSIN

ASSIGNED TO: W.E. FUCHS CH'K'D. BY: W.E. FUCHS

DRAWN BY: W.E.F. DATE: AUG. 6, 2008

PROJECT/GRANT NO.: WK52337270 SCALE: 1" = 60'

APPROVED BY:

Maxie Lindhofm
 CENTRAL DRAFTING & RECORDS MANAGER
W.E. Fuchs
 CITY ENGINEER