



240 N. Milwaukee Street  
Suite #400  
Milwaukee, WI 53202

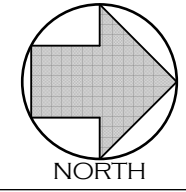
(414) 276.8550  
deep-river.com

**NOTE:**  
ALTHOUGH EVERY EFFORT HAS BEEN MADE IN PREPARING THESE CONTRACT DOCUMENTS AND CHECKING THEM FOR ACCURACY, THE CONTRACTORS MUST CHECK ALL DETAILS AND DIMENSIONS AND BE RESPONSIBLE FOR SAME. THE CONTRACTORS SHALL BE RESPONSIBLE FOR MAKING SURE THAT ALL WORK IS DONE IN ACCORDANCE WITH ALL STATE AND LOCAL CODES. THE CONTRACT DOCUMENTS UTILIZE A PROCESS CALLED FREE DESIGN OR DESIGN/BUILD FOR ROOF, WINDOW, PLUMBING, ELECTRICAL, HVAC DETAILS, AND AS DESIGNATED IN THE SPECIFICATION AS "TO BE COMPLETED ON A DESIGN/BUILD BASIS." THIS MEANS THAT THE CONTRACT DOCUMENTS DO NOT INCLUDE ALL REQUIRED DETAILS, AND THAT THE CONTRACTORS SHALL, USING THEIR OWN STAFF OR QUALIFIED SUBCONTRACTORS, DESIGN AND BUILD THE FREE DESIGN AND DESIGN/BUILD PORTIONS OF THE WORK. THE CLIENT IS DIRECTLY CONTRACTING WITH THE CONTRACTORS AND THEREFORE THE CLIENT AND THE CONTRACTORS ARE ASSUMING THE DESIGN AND BUILD RESPONSIBILITY FOR THE FREE DESIGN AND DESIGN/BUILD PORTIONS OF THE PROJECT. DEEP RIVER PARTNERS, LTD. IS NOT RESPONSIBLE FOR INSPECTING ANY ASPECT OF THE CONTRACTORS' WORK, OR FOR OBSERVATION OF THE CONTRACTORS' WORK FOR COMPLIANCE WITH THE CONTRACT DOCUMENTS.

Project 1731  
LAFAYETTE REMODEL 2  
2105 EAST LAFAYETTE PLACE  
MILWAUKEE, WI 53202

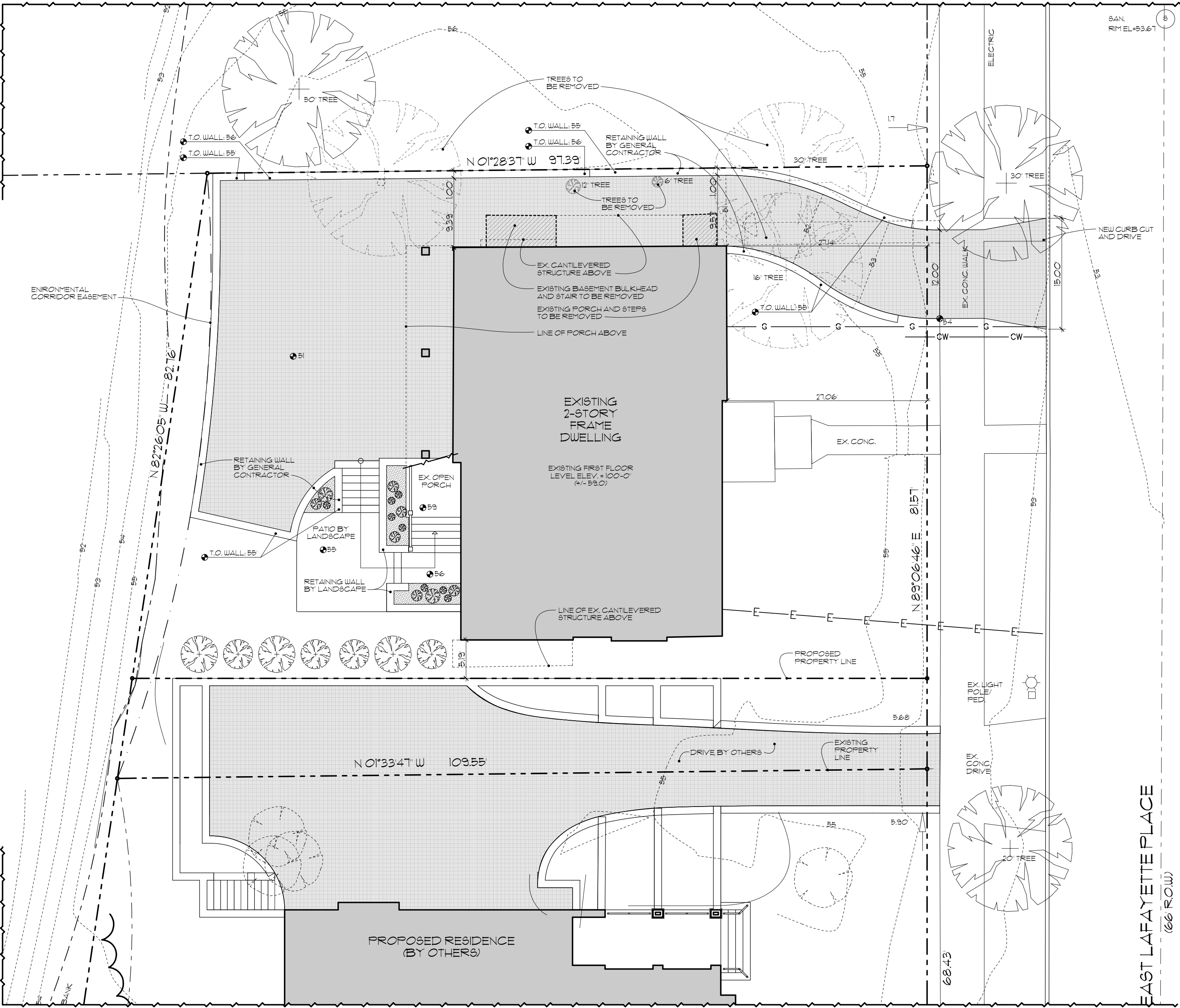
DESCRIPTION	DATE
REDLINE	01/16/2018
OWNER APPROVAL	12/27/2017
CONSULTANT PROPOSALS	01/30/2018
COA SUBMITTAL	02/01/2018

SITE PLAN



C1.1

© Copyright 2018 Deep River Partners, Ltd. All rights reserved. This document, ideas and design incorporated herein are the property of Deep River Partners, Ltd. and are not to be used whole or in part without the written consent of Deep River Partners, Ltd.



1 SITE PLAN  
SCALE: 1" = 10'