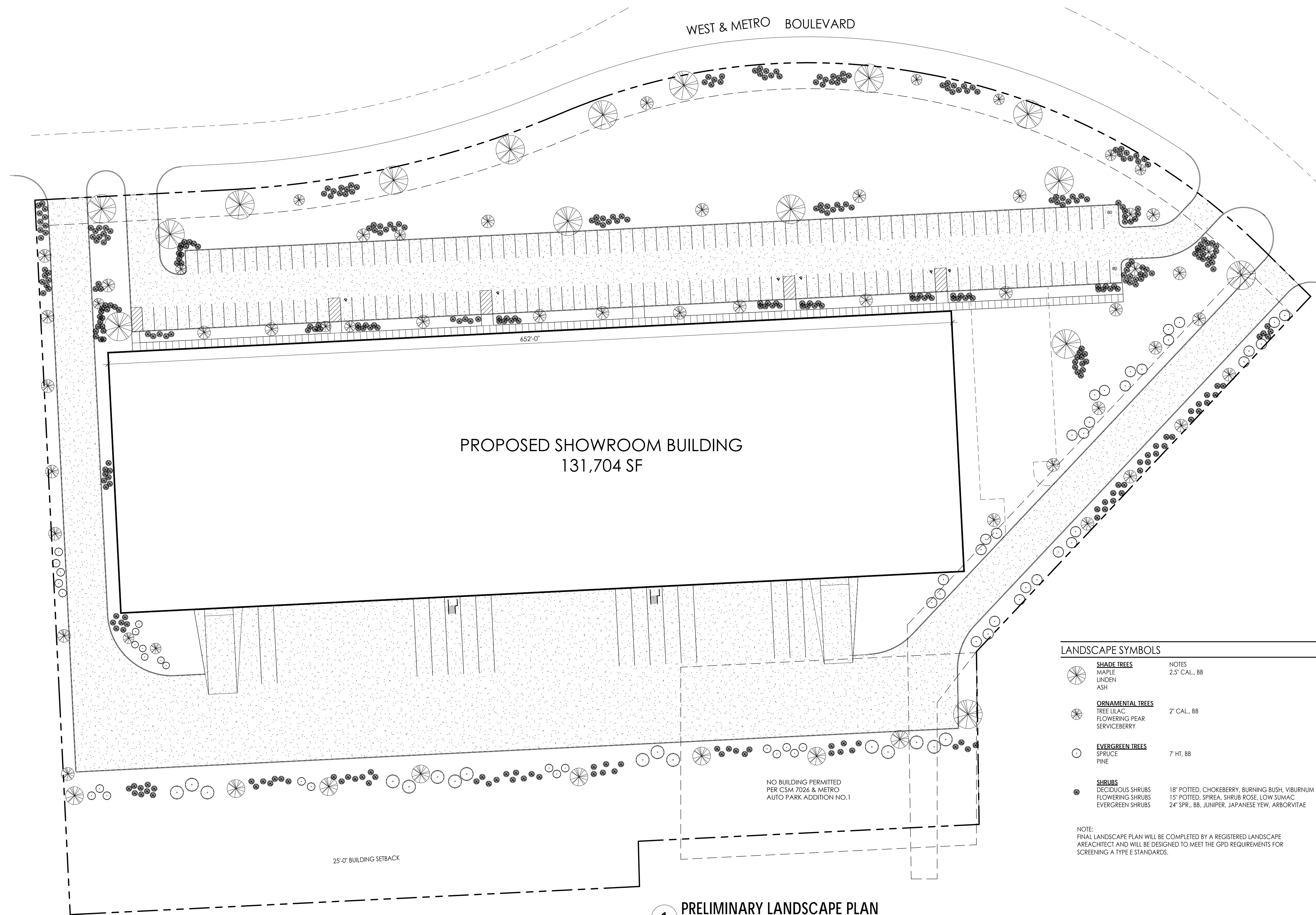


PROPOSED SHOWROOM BUILDING  
 131,704 SF  
 36'-0" BUILDING HEIGHT

| SITE SUMMARY           |                                 |
|------------------------|---------------------------------|
| GROSS SITE AREA:       | 464,954 SF = (+/-) 10.67 ACRES) |
| BUILDING AREA:         | 131,704 SF (28.3%)              |
| PAVING AREA:           | 144,855 SF (31.2%)              |
| GREEN SPACE:           | 188,395 SF (40.5%)              |
| STD PARKING SPACES:    | 154                             |
| ACCESSIBLE SPACES:     | 6                               |
| VAN ACCESSIBLE SPACES: | 1                               |
| TOTAL SPACES:          | 161                             |
| LOADING DOCK SPACES:   | 12                              |

1 ARCHITECTURAL SITE PLAN  
 SCALE: 1" = 40'-0"





1 PRELIMINARY LANDSCAPE PLAN  
SCALE: 1" = 40'-0"

