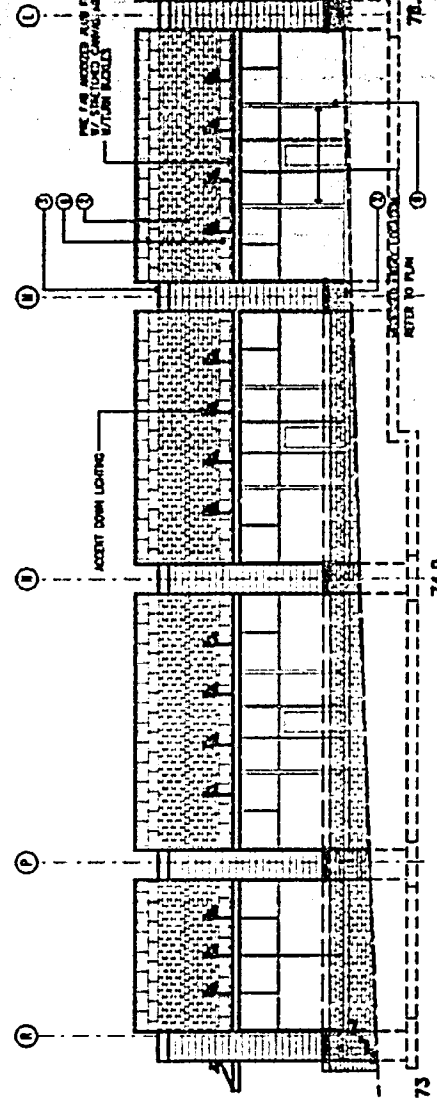


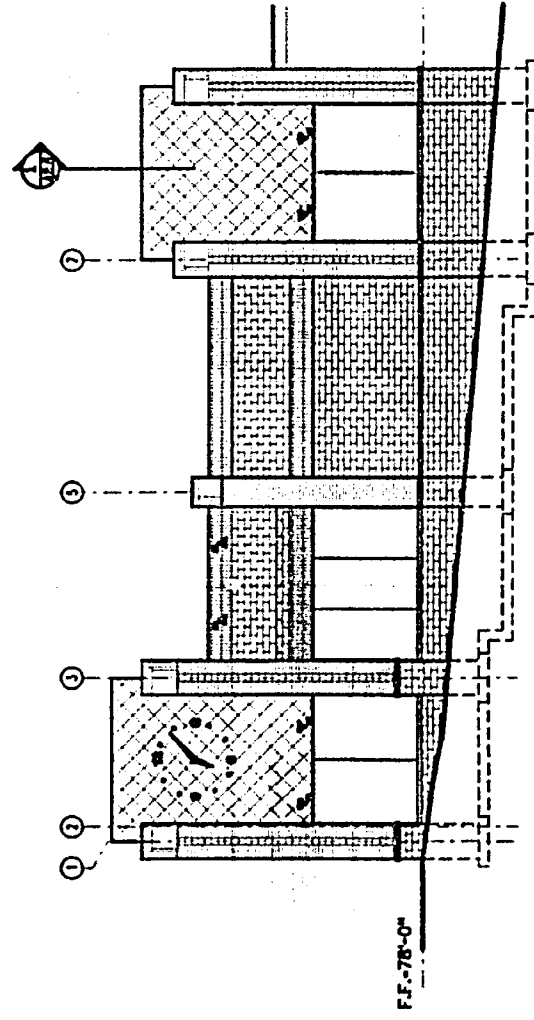
NORTH ELEVATION - WEST SIDE

K-1
SCALE: 1/8" = 1'-0"



NORTH ELEVATION - EAST SIDE

F-1
SCALE: 1/8" = 1'-0"



WEST ELEVATION

A-1
SCALE: 1/8" = 1'-0"

MATERIAL KEYING LEGEND

KEY NOTES

- ① LUG COATED COPPER W/ FLAT SEAMS PLACED AT 45 DEGREES ON SIDES
- ② GLEN GERY STAINLESS FACE BRICK
- ③ PRE CAST ARCHITECTURAL, SMOOTH FACE BRICKING AND CAP
- ④ TUNBRIDGE PLANTERS
- ⑤ W/1 TRIM
- ⑥ RENOVANCE MOUNTAIN LIMESTONE COLOR
- ⑦ PRE CAST CON STONE, NO ACCENT BRICKING
- ⑧ BLACK ANODIZED ALUM. MILLIONS WITH CLEAR PL. GL.
- ⑨ COLORED FABRIC ANCHORS ON PRE DESIGNER TRUSSES
- ⑩ PRE PAINTED COPPER BY RENOV INDUSTRIES TRANSITION BETWEEN BLACKSAND STEP DOWN BRICKS WALL

FABRIC ANCHORS COLORED MAT VARY PER TOWERS

ANCHORS TO BE ONE OF TWO COLORS AND DIFFERENT PER BLOCK

SMALL RETAIL SHOPS SIGNAGE CRITERIA

SMALL RETAIL SHOPS SIGNAGE FOR THESE SHOPS SHALL BE A MINIMUM HEIGHT OF 2'-0" WITH A NORMAL LENGTH OF 75 PERCENT OF THE FRONT FACE EXPOSURE

ACCENTS OF SIGNAGE MAY VARY BASED ON SHOP'S LOGO DESIGN

VARIATION OF COLOR AND STYLE ARE DISCOURAGED

WORDS WILL BE INDIVIDUALLY MOUNTED LETTERS, AND SHALL BE INTERNALLY ILLUMINATED

CENTER IDENTIFICATION SIGNAGE FOR RETAIL SHOPS CORNER LOCATION "CENTER IDENTIFICATION" MOUNTED BEHIND GLASS

WORDS WILL BE INDIVIDUAL LETTERS

SUSPECTED AND BE INTERNALLY ILLUMINATED

CENTER IDENTIFICATION COLOR TO BE WHITE

LEVEL COLORED TO BE RED

WALL SIGNAGE

PM SET BACK 18" INDIVIDUAL LETTERS MOUNTED ON MOUNTAIN LETTER/FACE TO BE FLAT RED

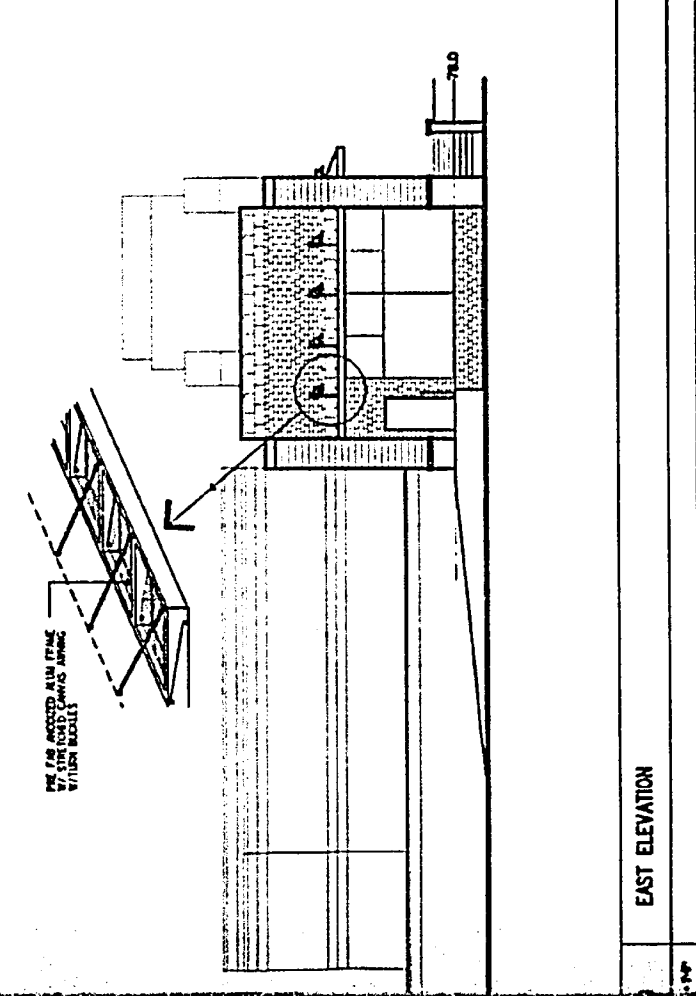
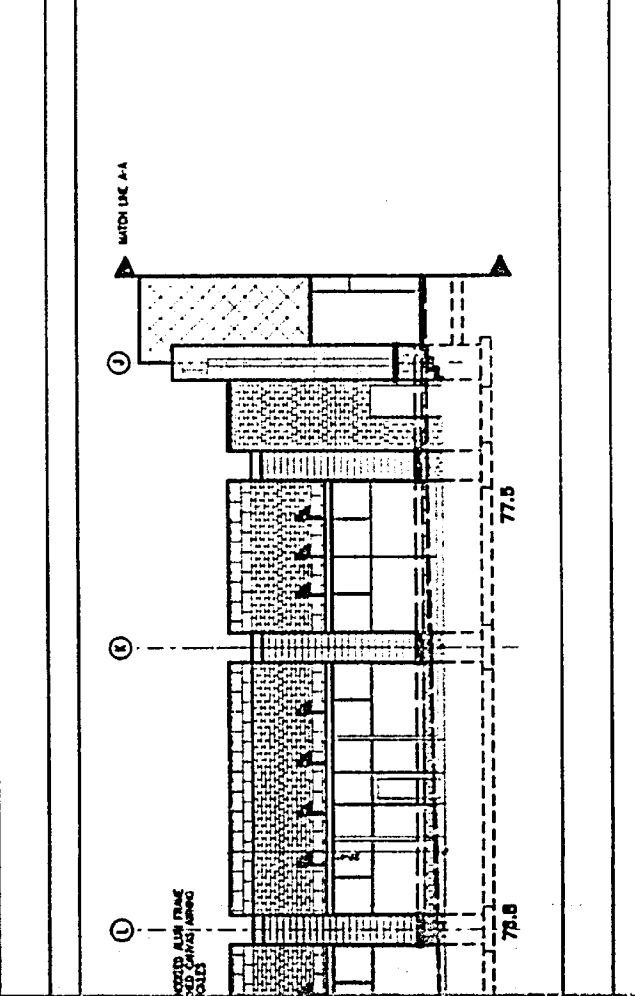
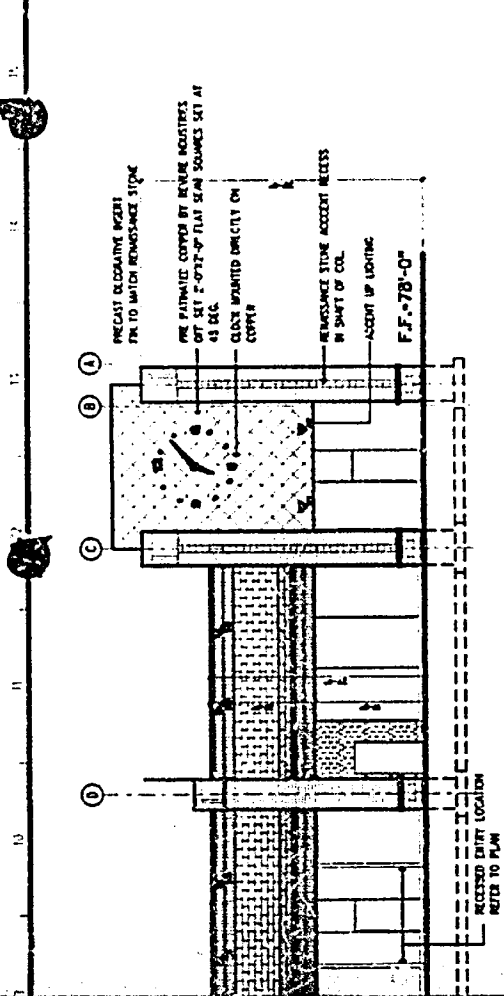
NO.	DESCRIPTION	DATE

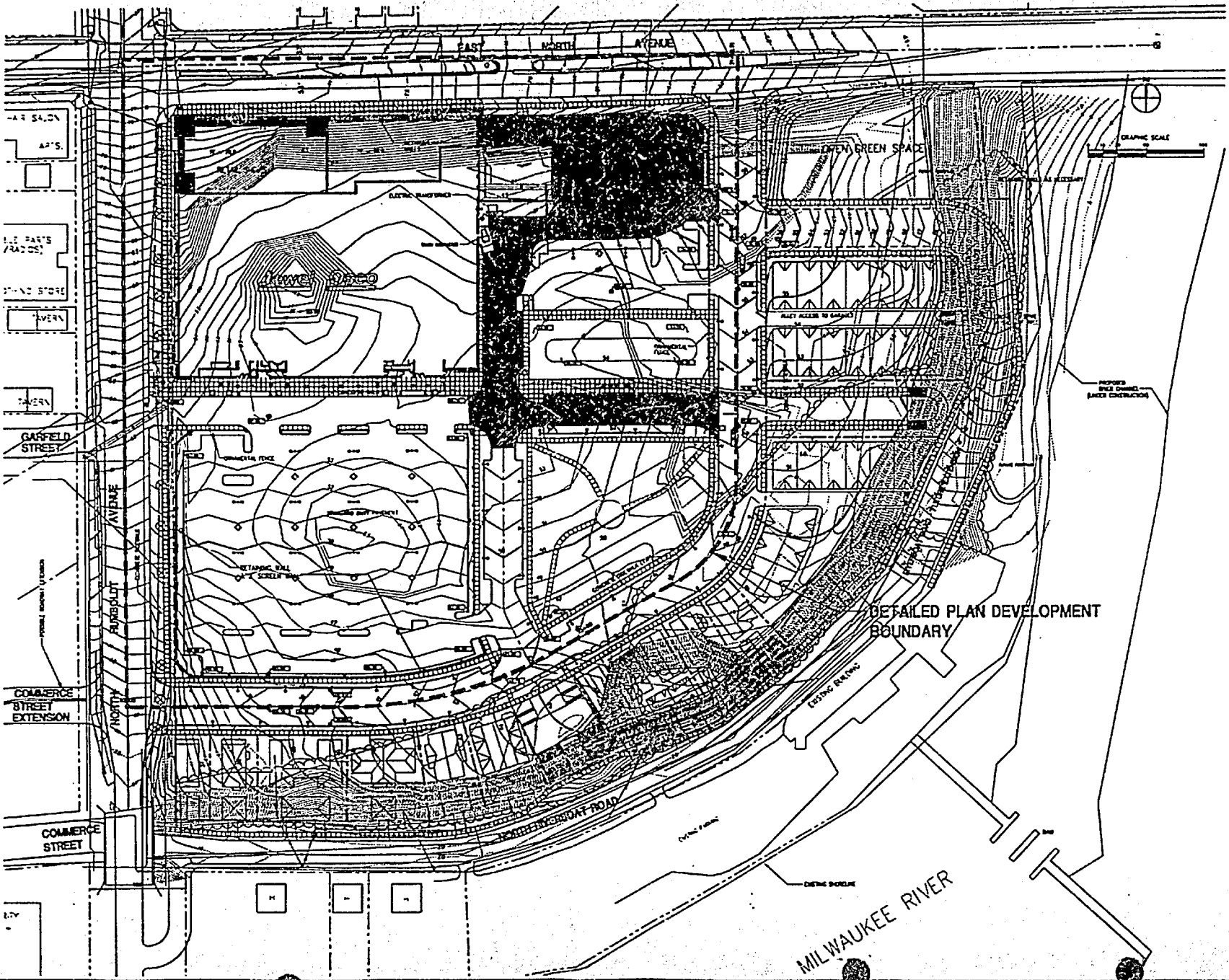
CAT **Construction & Development, Ltd.**
AN IRVING-CLOUD COMPANY
200 E. UNIVERSITY BLVD., SUITE 100
IRVING, TEXAS 75038

RENOVO INDUSTRIES
1550-0500 RETAIL SHOPS
E. NORTH AVE. & N. HARBORVIEW AVE.
IRVING, TEXAS 75038

NO.	DATE	DESCRIPTION

A201b





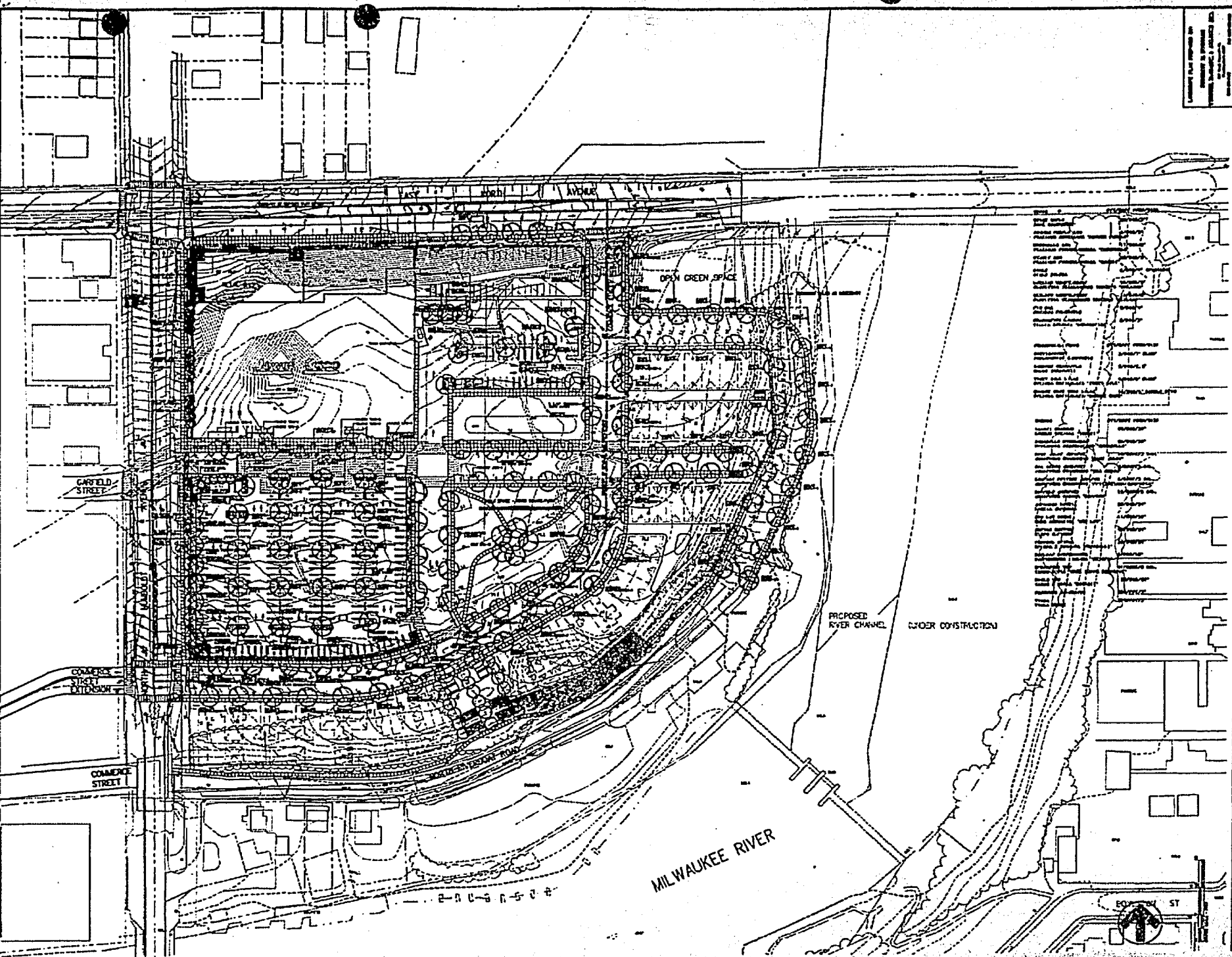
E.P.T. 11-11-1319
 E.P.T.E.I.N.
 3880

Camburas & Theodore Ltd.
 ARCHITECTS

Jewel Osco
 STORE # 01-1319
 EAST NORTH AVE. & NORTH HARBOUR ST.
 MILWAUKEE, WISCONSIN

DETAILED PLAN DEVELOPMENT
 GRADING AND PAVING PLAN

C20



Consulting and Engineering Firm
 1000 North Dearborn Street
 Chicago, Illinois 60610
 Telephone: (312) 467-1000
 Fax: (312) 467-1001

Cambridge & Theodore Ltd.
 EPSTEIN
 BROWN

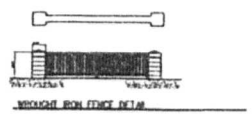
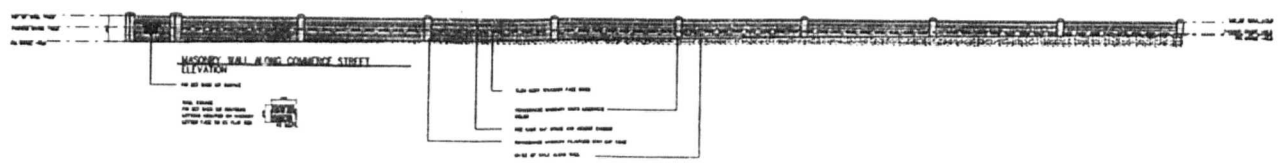
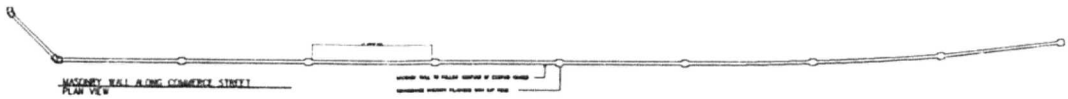
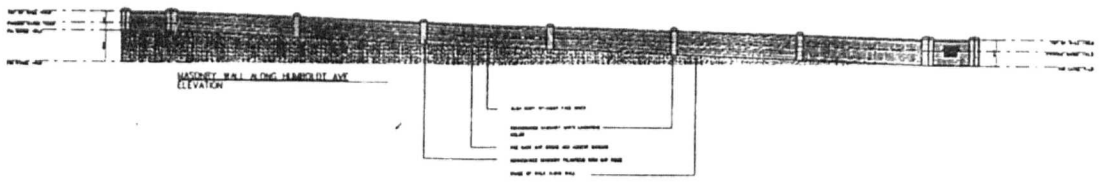
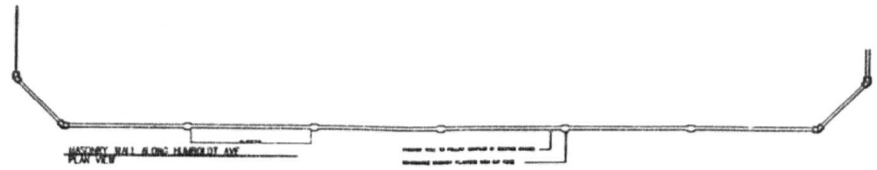
Cambridge & Theodore Ltd.
 1000 North Dearborn Street
 Chicago, Illinois 60610
 Telephone: (312) 467-1000
 Fax: (312) 467-1001



Jewel/Osco
 1000 North Dearborn Street
 Chicago, Illinois 60610
 Telephone: (312) 467-1000
 Fax: (312) 467-1001

DETAILED PLAN
 DEVELOPMENT
 LANDSCAPE PLAN

DATE: 11/19/87
 SCALE: AS SHOWN
 PROJECT NO.: 87-001
 SHEET NO.: 1 OF 1



SEE PLAN FOR WALL LOCATION
 MASONRY SHALL BE PLASTERED WITH 3/8" THICK PLASTER
 AND FINISHED WITH 1/8" THICK PLASTER
 WITH 1/8" SAND
 MASONRY SHALL BE PLASTERED WITH 3/8" THICK PLASTER
 AND FINISHED WITH 1/8" THICK PLASTER
 WITH 1/8" SAND

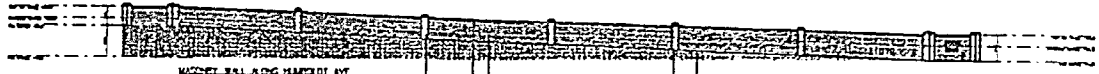
TYPICAL WALL SECTION

SEE PLAN FOR WALL LOCATION
 MASONRY SHALL BE PLASTERED WITH 3/8" THICK PLASTER
 AND FINISHED WITH 1/8" THICK PLASTER
 WITH 1/8" SAND

PROJECT INFORMATION PROJECT NO. 100-100000 SHEET NO. 100-100000-100 DATE 10/1/97	DESIGNER J. W. BROWN
CHECKED BY J. W. BROWN	DATE 10/1/97



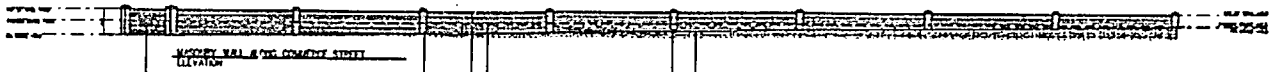
MASONRY WALL ALONG SIMPSON AVE
PLAN VIEW



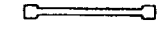
MASONRY WALL ALONG SIMPSON AVE
ELEVATION



MASONRY WALL ALONG OAK CEMETERY STREET
PLAN VIEW



MASONRY WALL ALONG OAK CEMETERY STREET
ELEVATION



MASONRY WALL SECTION
SECTION

SEE PLAN FOR WALL
 FOUNDATION SHALL BE CONCRETE WITH 4" DIA. REINFORCING BARS AT 4" ON CENTER
 WALL SHALL BE 12" THICK
 FINISH SHALL BE BRICK

PROJECT DATA

PROJECT NO. 12345
 SHEET NO. 1 OF 1
 DATE: 12/12/97

CLIENT
 ABC COMPANY

DESIGNER
 JOHN DOE

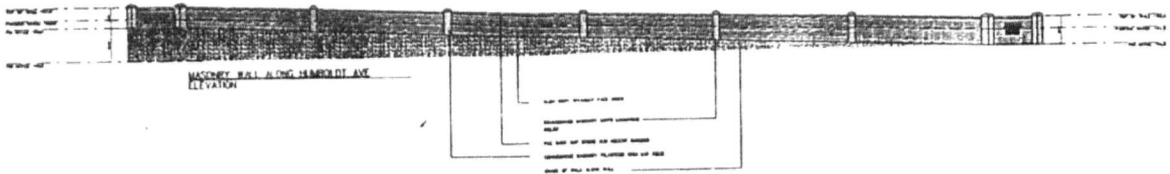
CHECKED BY
 JANE SMITH

SCALE
 AS SHOWN

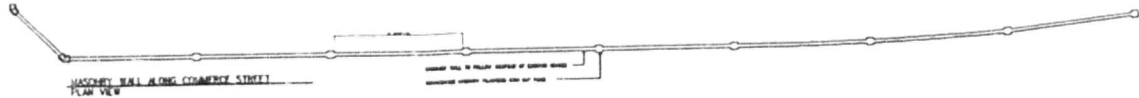
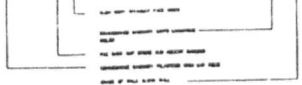
Correction



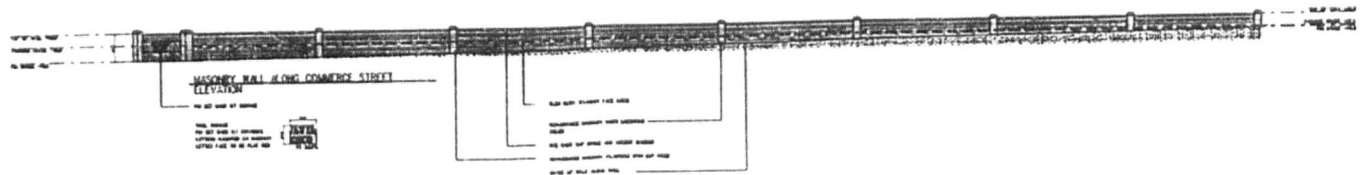
MASONRY WALL ALONG HUMBOLDT AVE
PLAN VIEW



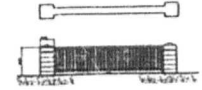
MASONRY WALL ALONG HUMBOLDT AVE
ELEVATION



MASONRY WALL ALONG COMMERCE STREET
PLAN VIEW



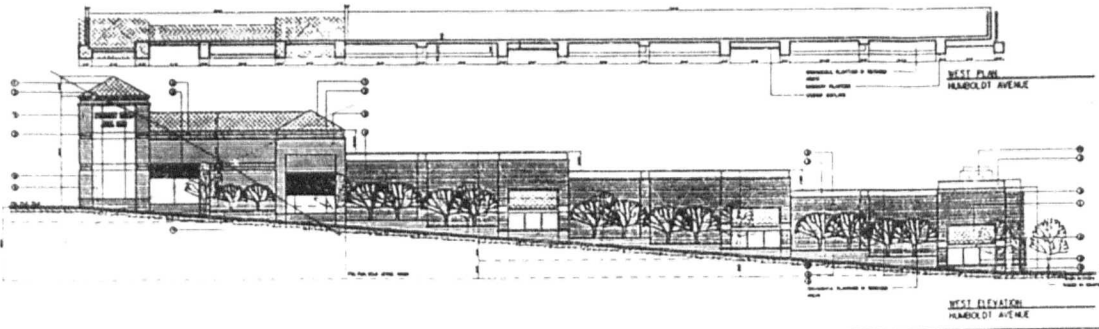
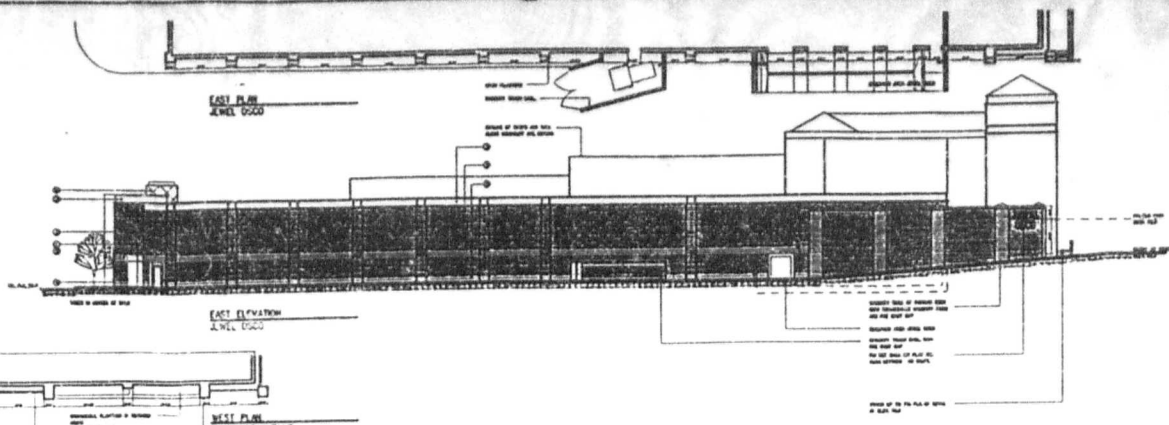
MASONRY WALL ALONG COMMERCE STREET
ELEVATION



WROUGHT IRON FENCE DETAIL

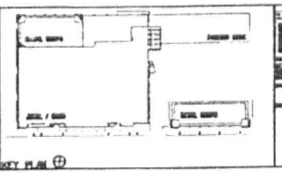
THE WALL SHALL BE 10' HIGH
MASONRY WALLS PLACED 10' ON SPACES
MASONRY WALLS TO FOLLOW CURVE OF EXISTING WALK
MASONRY WALLS PLACED 10' ON SPACES
MASONRY WALLS TO FOLLOW CURVE OF EXISTING WALK
MASONRY WALLS PLACED 10' ON SPACES

<p>THIS DRAWING IS THE PROPERTY OF THE ARCHITECT AND ENGINEER. IT IS TO BE USED ONLY FOR THE PROJECT AND SITE SPECIFICALLY IDENTIFIED HEREON. ANY REUSE OR MODIFICATION OF THIS DRAWING WITHOUT THE WRITTEN CONSENT OF THE ARCHITECT AND ENGINEER IS STRICTLY PROHIBITED.</p>	<p>ARCHITECT AND ENGINEER THE ARCHITECT AND ENGINEER 1000 15TH AVENUE, SUITE 1000 DENVER, COLORADO 80202 TEL: 303.733.1111 FAX: 303.733.1112 WWW.AE.COM</p>
---	--

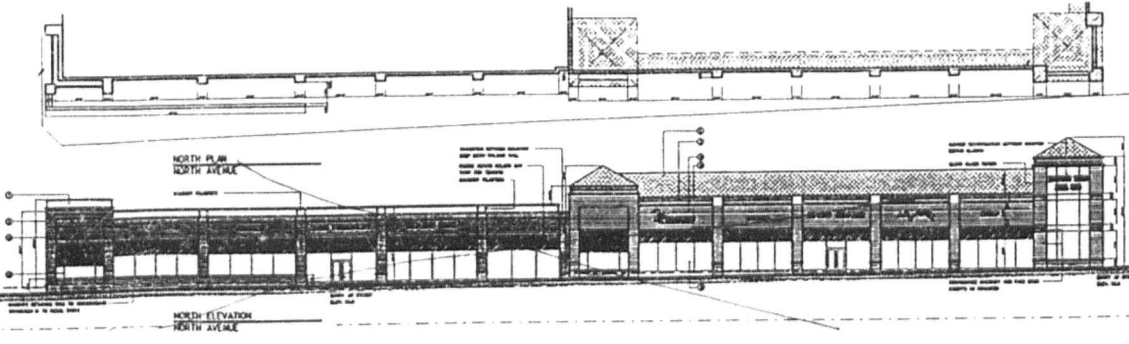
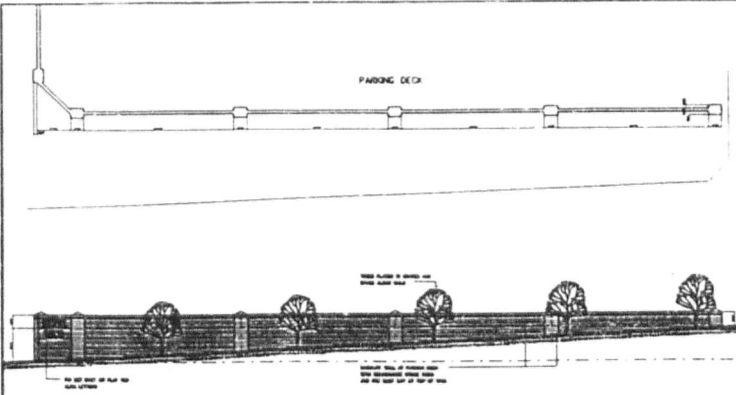


SEE A201b
-H
2-23-98

- KEY NOTES**
- 1. SEE A201b FOR ALL OTHER NOTES
 - 2. SEE A201b FOR ALL OTHER NOTES
 - 3. SEE A201b FOR ALL OTHER NOTES
 - 4. SEE A201b FOR ALL OTHER NOTES
 - 5. SEE A201b FOR ALL OTHER NOTES
 - 6. SEE A201b FOR ALL OTHER NOTES
 - 7. SEE A201b FOR ALL OTHER NOTES
 - 8. SEE A201b FOR ALL OTHER NOTES
 - 9. SEE A201b FOR ALL OTHER NOTES
 - 10. SEE A201b FOR ALL OTHER NOTES

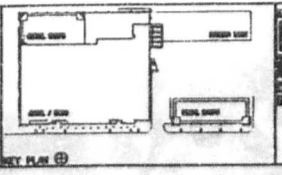


Underway Building, LLC
Architectural and Engineering
10000 N. 10th Ave., Suite 100
Denver, CO 80231
Tel: 303.751.1000
Fax: 303.751.1001
www.underwaybuilding.com



- KEY NOTES**
- 1. SEE A201b FOR ALL OTHER NOTES
 - 2. SEE A201b FOR ALL OTHER NOTES
 - 3. SEE A201b FOR ALL OTHER NOTES
 - 4. SEE A201b FOR ALL OTHER NOTES
 - 5. SEE A201b FOR ALL OTHER NOTES
 - 6. SEE A201b FOR ALL OTHER NOTES
 - 7. SEE A201b FOR ALL OTHER NOTES
 - 8. SEE A201b FOR ALL OTHER NOTES
 - 9. SEE A201b FOR ALL OTHER NOTES
 - 10. SEE A201b FOR ALL OTHER NOTES

- KEY NOTES**
- 1. SEE A201b FOR ALL OTHER NOTES
 - 2. SEE A201b FOR ALL OTHER NOTES
 - 3. SEE A201b FOR ALL OTHER NOTES
 - 4. SEE A201b FOR ALL OTHER NOTES
 - 5. SEE A201b FOR ALL OTHER NOTES
 - 6. SEE A201b FOR ALL OTHER NOTES
 - 7. SEE A201b FOR ALL OTHER NOTES
 - 8. SEE A201b FOR ALL OTHER NOTES
 - 9. SEE A201b FOR ALL OTHER NOTES
 - 10. SEE A201b FOR ALL OTHER NOTES



Underway Building, LLC
Architectural and Engineering
10000 N. 10th Ave., Suite 100
Denver, CO 80231
Tel: 303.751.1000
Fax: 303.751.1001
www.underwaybuilding.com

MATERIAL KEYING LEGEND

KEY NOTES

- ① LEAD FLASHED COPPER WILL FLAT SEAMED PLACED AT 45 DEGREES ON SUB-DRAINAGE
 - ② OLD KEY WITHOUT FACE BRICK
 - ③ PRE-CAST ARCHITECTURAL SMOOTH FACE BRICK 4-2 CIP
 - ④ TERRAZZO PLANKERS
 - ⑤ NET WOOD
 - ⑥ RENOVATED SANDY LIGHT LIMESTONE COLOR
 - ⑦ PRE-CAST CAP STONE AND ACCENT BRICKING
 - ⑧ BLACK ANODIZED ALUM. MILLINGS WITH CLEAR FL. GL.
 - ⑨ COLORED FABRIC SHIMMS ON PRE-ENGINEERED TRACEDS
 - ⑩ PRE-PATINATED COPPER BY REVERE INDUSTRIES
- TRANSITION BETWEEN BRACKING STEP DOWN BRACKING WALL
- FABRIC FINISHING COLORS MAY VARY PER FINISH
- FINISHES TO BE MIX OF TWO COLORS AND DIFFERENT PER BRG.

SMALL RETAIL SHOPS SIGNAGE CRITERIA

- RETAIL SHOPS SIGNAGE
- SPACE FOR RETAIL SHOPS SHALL BE A MINIMUM HEIGHT OF 3'-0" WITH A MINIMUM LENGTH OF 75 PERCENT OF THE FRONT FACE FINISHING HEIGHTS OF SIGNAGE MAY VARY BASED ON SPECIFIC LOAD REQUIREMENTS
- VARIATION OF COLOR AND STYLE ARE ENCOURAGED
- SHOPS WILL BE INDENTED MOUNTED LETTERS AND SHALL BE INTERNALLY ILLUMINATED
- CENTER IDENTIFICATION
- SPACE FOR RETAIL SHOPS CORNER LOCATION "CENTER IDENTIFICATION MOUNTED BRICK CLASS
- SHOPS WILL BE INDENTED LETTERS SIGNAGE AND BE INTERNALLY ILLUMINATED CENTER IDENTIFICATION COLOR TO BE WHITE AND USED COLOR TO BE RED
- WALL SIGNAGE
- PRE-SET BACK UP SIGNAGE LETTERS MOUNTED ON MASONRY LETTER FACE TO BE FLAT RED

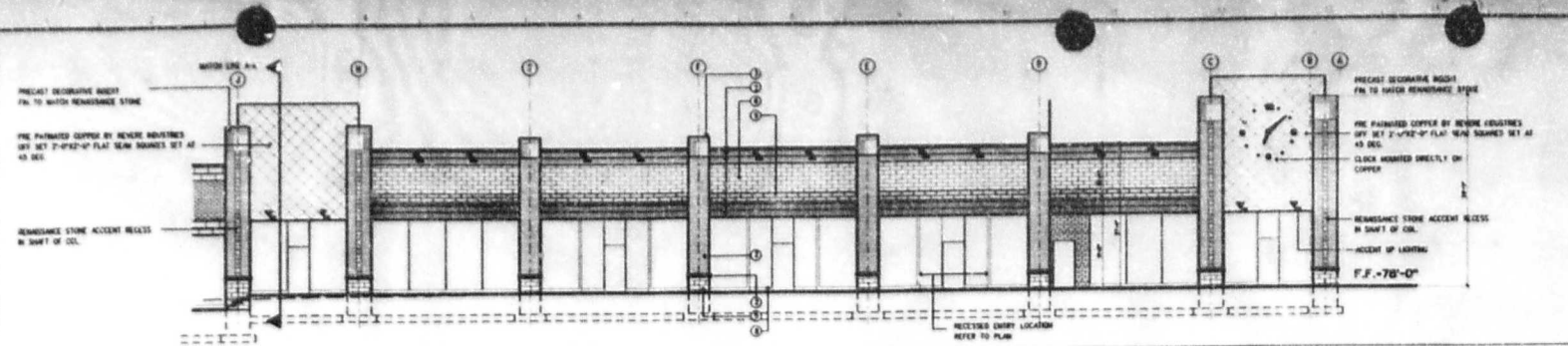
NEW YORK
JULY 1958
14 1011
NEW YORK
OSCO
14 1011

CT **Clayton & Thomas, Ltd.**
Architects - Interiors
204 E. Commerce St., One Penn. B.
Tulsa, Oklahoma 74103
Tel. 467-2415

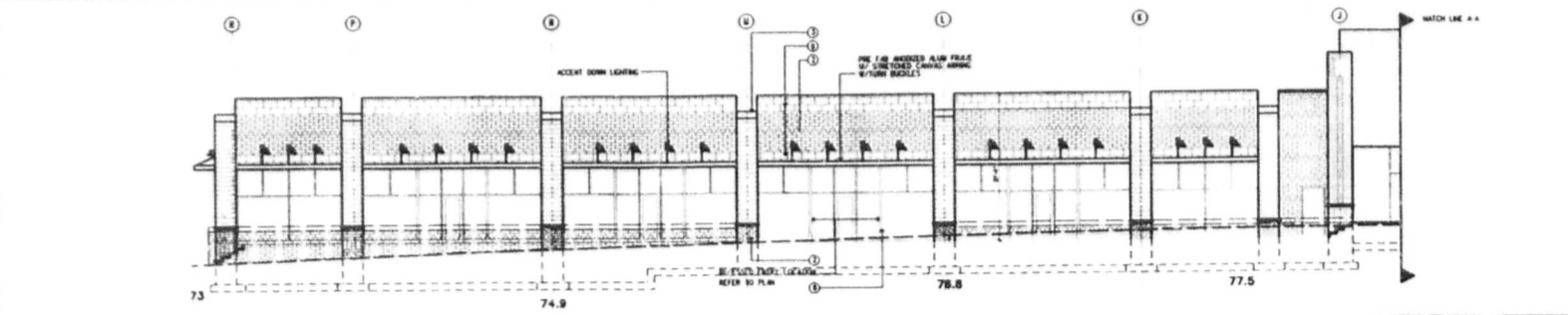
JEWEL-OSCO RETAIL SHOPS
E. NORTH AVE. & N. HAMBOLDT AVE.
MILWAUKEE, WI

ELEVATIONS

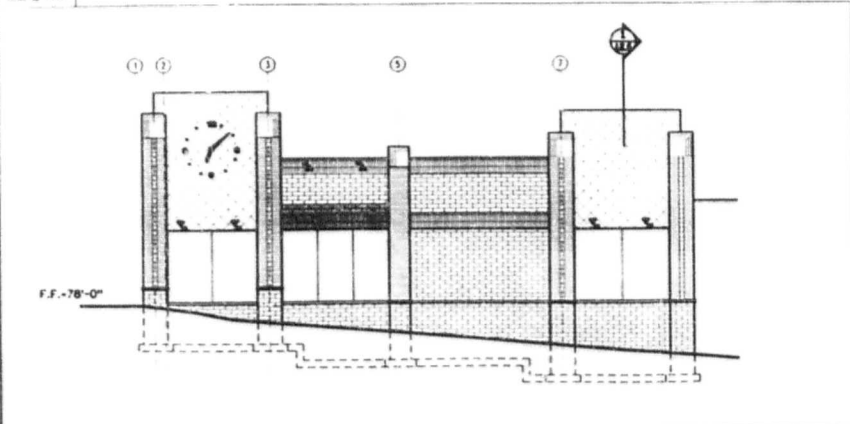
NO.	DATE	BY	CHKD.
1	11-15-58	CT	CT
2	11-15-58	CT	CT
3	11-15-58	CT	CT
4	11-15-58	CT	CT
5	11-15-58	CT	CT
6	11-15-58	CT	CT
7	11-15-58	CT	CT
8	11-15-58	CT	CT
9	11-15-58	CT	CT
10	11-15-58	CT	CT
11	11-15-58	CT	CT
12	11-15-58	CT	CT
13	11-15-58	CT	CT
14	11-15-58	CT	CT
15	11-15-58	CT	CT
16	11-15-58	CT	CT
17	11-15-58	CT	CT
18	11-15-58	CT	CT
19	11-15-58	CT	CT
20	11-15-58	CT	CT
21	11-15-58	CT	CT
22	11-15-58	CT	CT
23	11-15-58	CT	CT
24	11-15-58	CT	CT
25	11-15-58	CT	CT
26	11-15-58	CT	CT
27	11-15-58	CT	CT
28	11-15-58	CT	CT
29	11-15-58	CT	CT
30	11-15-58	CT	CT
31	11-15-58	CT	CT
32	11-15-58	CT	CT
33	11-15-58	CT	CT
34	11-15-58	CT	CT
35	11-15-58	CT	CT
36	11-15-58	CT	CT
37	11-15-58	CT	CT
38	11-15-58	CT	CT
39	11-15-58	CT	CT
40	11-15-58	CT	CT
41	11-15-58	CT	CT
42	11-15-58	CT	CT
43	11-15-58	CT	CT
44	11-15-58	CT	CT
45	11-15-58	CT	CT
46	11-15-58	CT	CT
47	11-15-58	CT	CT
48	11-15-58	CT	CT
49	11-15-58	CT	CT
50	11-15-58	CT	CT



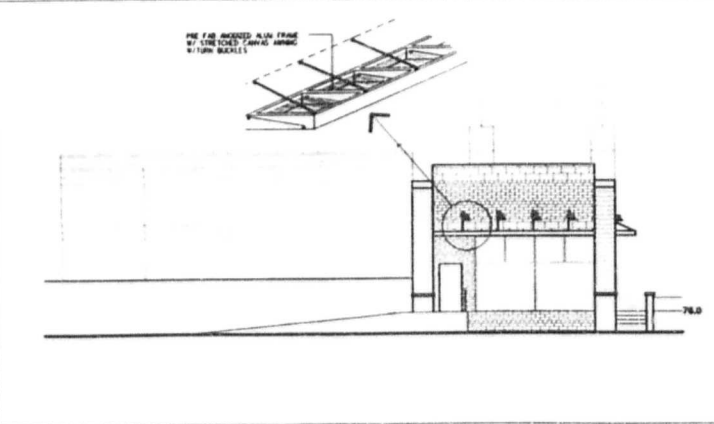
K-1 NORTH ELEVATION - WEST SIDE
WAD: N - P-P



F-1 NORTH ELEVATION - EAST SIDE
WAD: N - P-P

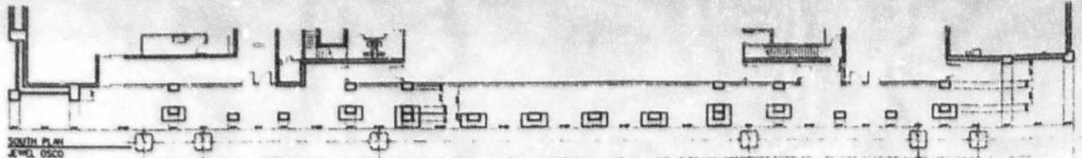


A-1 WEST ELEVATION



A-9 EAST ELEVATION

A201b



SOUTH PLAN
JEWEL OSCO

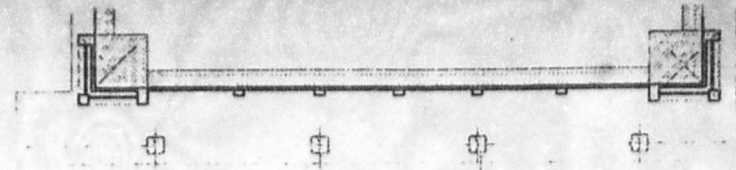


SOUTH ELEVATION
JEWEL OSCO

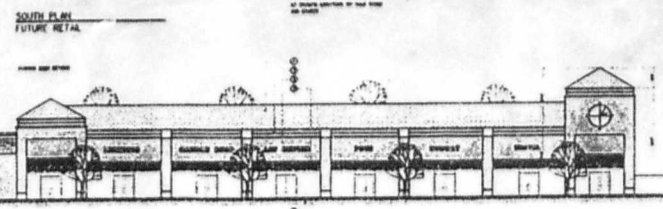
KEY NOTES

- 1. SEE ELEVATION FOR MATERIAL AND FINISHES.
- 2. SEE ELEVATION FOR MATERIAL AND FINISHES.
- 3. SEE ELEVATION FOR MATERIAL AND FINISHES.
- 4. SEE ELEVATION FOR MATERIAL AND FINISHES.
- 5. SEE ELEVATION FOR MATERIAL AND FINISHES.

KEY PLAN



SOUTH PLAN
FUTURE RETAIL



SOUTH ELEVATION
WITH FUTURE RETAIL

KEY NOTES

- 1. SEE ELEVATION FOR MATERIAL AND FINISHES.
- 2. SEE ELEVATION FOR MATERIAL AND FINISHES.
- 3. SEE ELEVATION FOR MATERIAL AND FINISHES.
- 4. SEE ELEVATION FOR MATERIAL AND FINISHES.
- 5. SEE ELEVATION FOR MATERIAL AND FINISHES.

KEY PLAN

JEWEL / OSCO SOURCE DATA

Jewel Osco
DEPARTMENT STORE

1. RETAIL	1. RETAIL
2. RETAIL	2. RETAIL
3. RETAIL	3. RETAIL
4. RETAIL	4. RETAIL
5. RETAIL	5. RETAIL

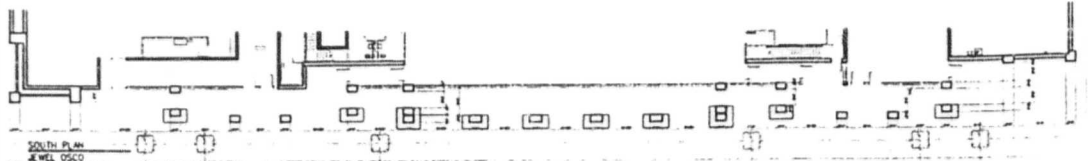


KEY NOTES

- 1. SEE SOURCE DATA FOR MATERIAL FINISHES.
- 2. SEE SOURCE DATA FOR MATERIAL FINISHES.
- 3. SEE SOURCE DATA FOR MATERIAL FINISHES.
- 4. SEE SOURCE DATA FOR MATERIAL FINISHES.
- 5. SEE SOURCE DATA FOR MATERIAL FINISHES.

KEY PLAN

Customer Services, Ltd.
Architectural Firm
Project: JEWEL OSCO
Site: [Location]



SOUTH PLAN
JEWEL OSCO



SOUTH ELEVATION
JEWEL OSCO

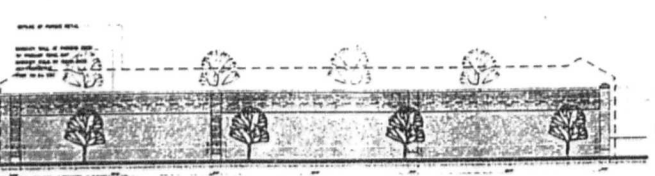
KEY NOTES

- 1. SEE ELEVATION FOR MATERIAL AND FINISHES.
- 2. SEE ELEVATION FOR MATERIAL AND FINISHES.
- 3. SEE ELEVATION FOR MATERIAL AND FINISHES.
- 4. SEE ELEVATION FOR MATERIAL AND FINISHES.
- 5. SEE ELEVATION FOR MATERIAL AND FINISHES.

KEY PLAN



SOUTH PLAN
FUTURE RETAIL

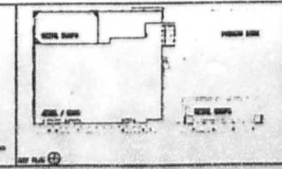


SOUTH ELEVATION
PARKING DECK

JEWEL / OSCO SOURCE DATA

Jewel Osco
DEPARTMENT STORE

1. RETAIL	1. RETAIL
2. RETAIL	2. RETAIL
3. RETAIL	3. RETAIL
4. RETAIL	4. RETAIL
5. RETAIL	5. RETAIL

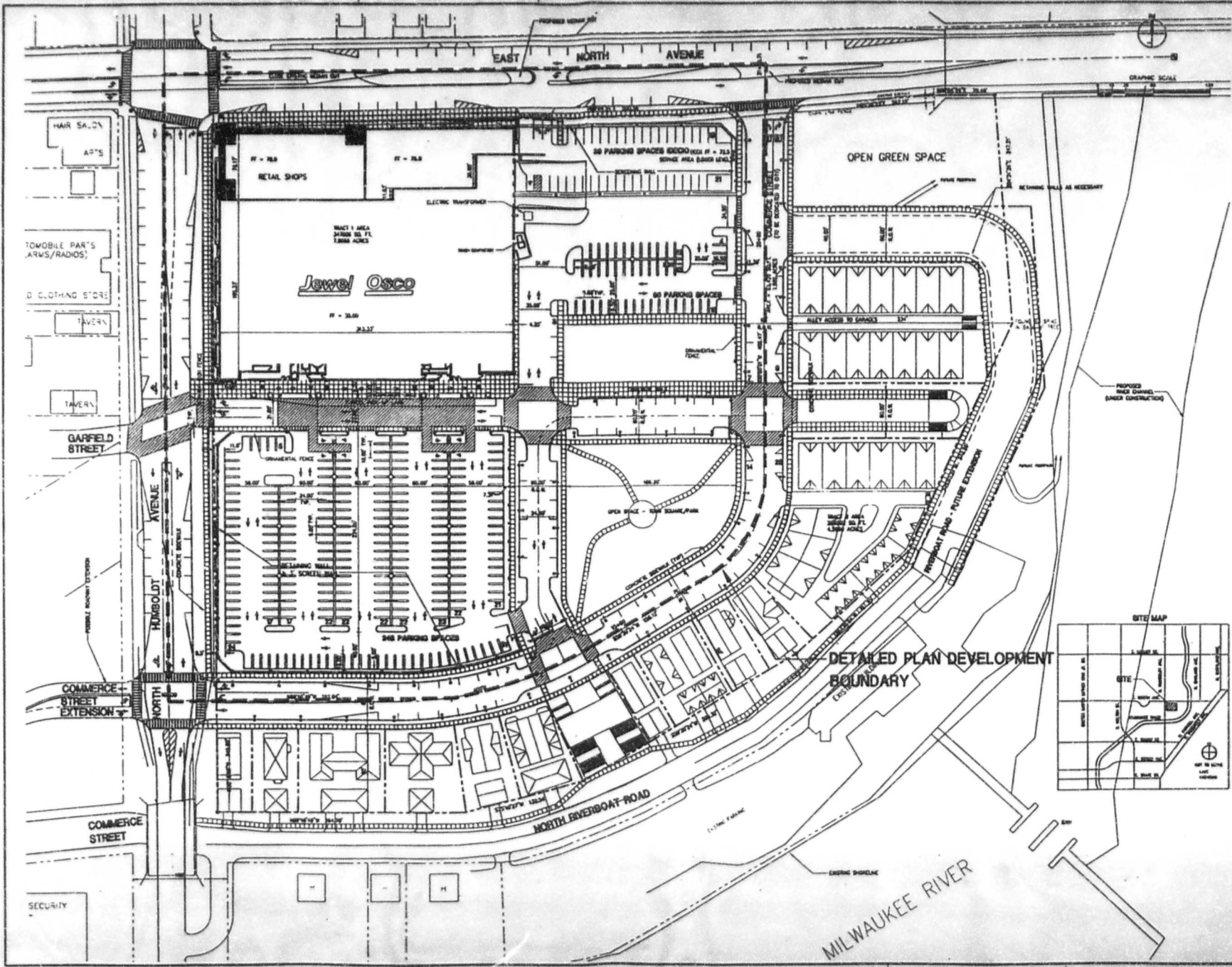


KEY NOTES

- 1. SEE SOURCE DATA FOR MATERIAL FINISHES.
- 2. SEE SOURCE DATA FOR MATERIAL FINISHES.
- 3. SEE SOURCE DATA FOR MATERIAL FINISHES.
- 4. SEE SOURCE DATA FOR MATERIAL FINISHES.
- 5. SEE SOURCE DATA FOR MATERIAL FINISHES.

KEY PLAN

Customer Services, Ltd.
Architectural Firm
Project: JEWEL OSCO
Site: [Location]



Camurus & Theodore L.L.C.
ARCHITECTS

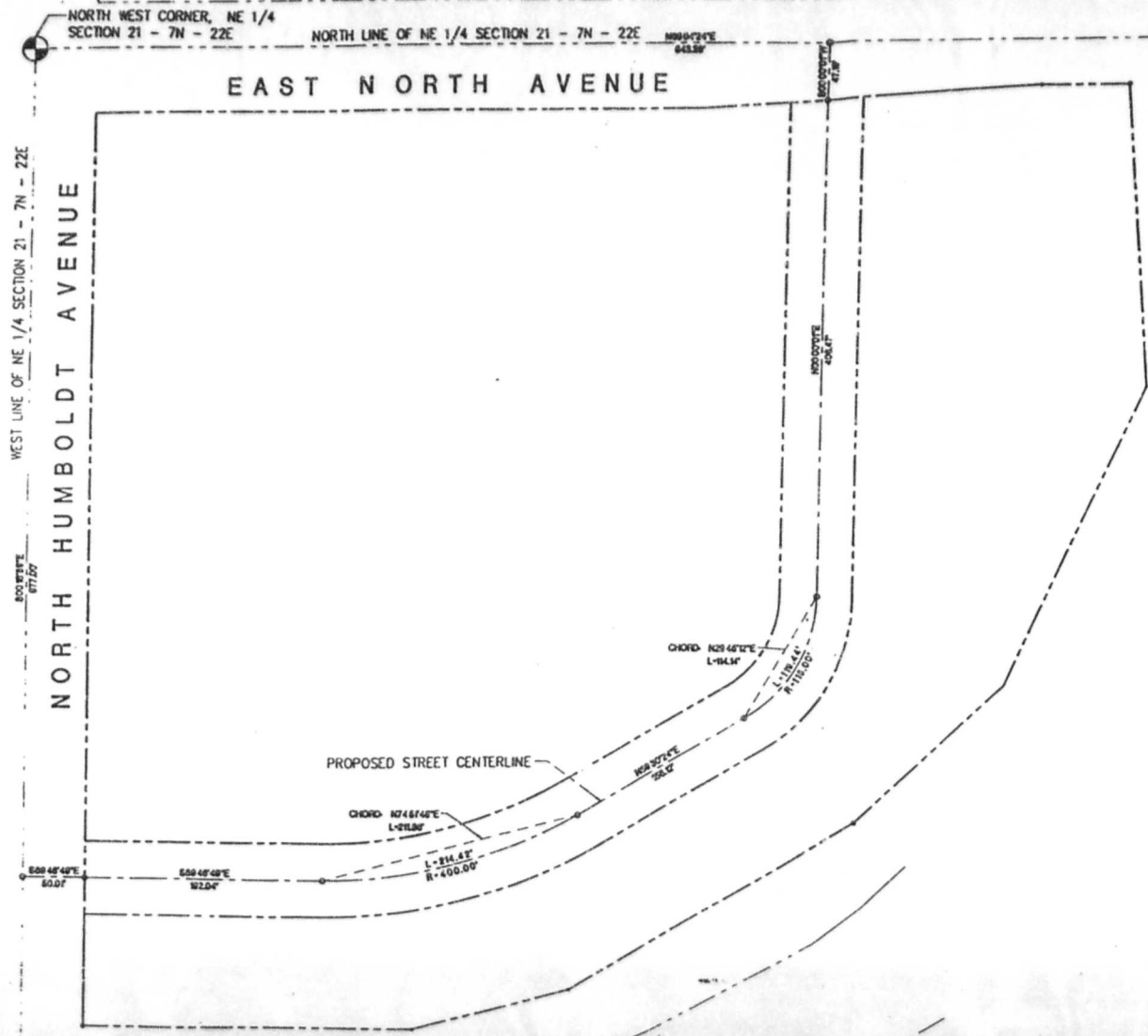
Jewel/Osco
STORE # 01-1395
EAST NORTH AVE. & NORTH HUMBOLDT AVE.
MILWAUKEE, WISCONSIN

DETAILED PLAN DEVELOPMENT
SITE PLAN

C1.0

DATE: 11/11/03
DRAWN BY: [blank]
CHECKED BY: [blank]
APPROVED BY: [blank]





NORTH WEST CORNER, NE 1/4 SECTION 21 - 7N - 22E
 NORTH LINE OF NE 1/4 SECTION 21 - 7N - 22E

EAST NORTH AVENUE

WEST LINE OF NE 1/4 SECTION 21 - 7N - 22E

NORTH HUMBOLDT AVENUE

PROPOSED STREET CENTERLINE

CHORD N248°44'E L=218.00'

L=218.43' R=400.00'

CHORD N248°44'E L=218.00'

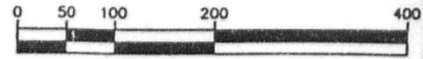
L=218.43' R=400.00'

N248°44'E 218.00'

N248°44'E 218.00'



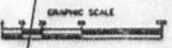
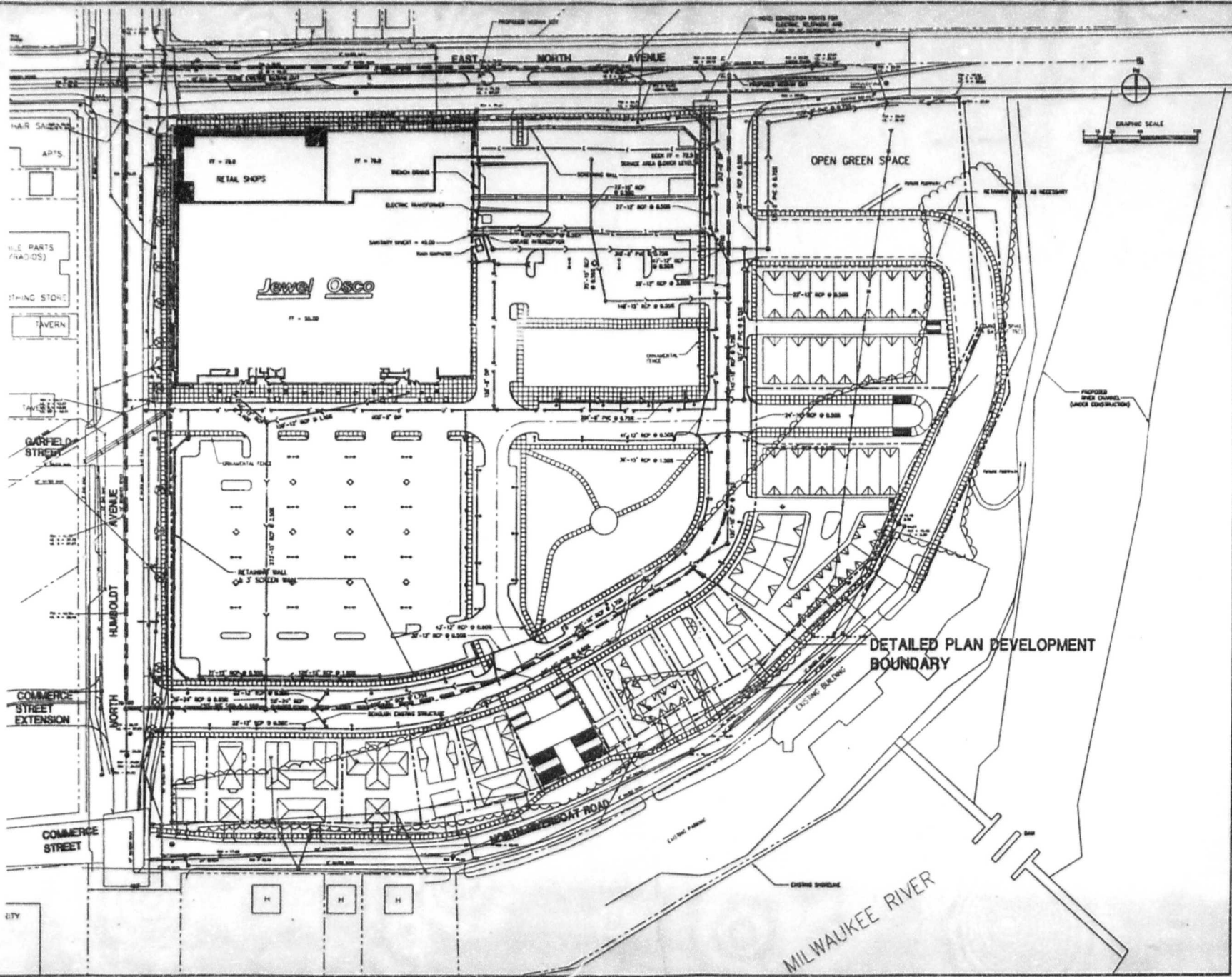
GRAPHIC SCALE



Detailed Plan Development
 EXHIBIT PLAT

PROPOSED STREET CENTER LINE IN
 NORTHWEST 1/4 OF NORTHEAST 1/4
 IN SECTION 21, TOWNSHIP 7N, RANGE
 22E MILWAUKEE, WISCONSIN.

NOTE:
 CENTER LINE DESCRIPTION BASED ON
 ALTA/ACSM LAND TITLE SURVEY BY
 NATIONAL SURVEY & ENGINEERING,
 SURVEY No. 151231 DATED MARCH 24,
 1997.
 THE BEARINGS SHOWN HERE ARE BASED
 ON THE WISCONSIN COORDINATE
 SYSTEM, SOUTH ZONE.




**DETAILED PLAN DEVELOPMENT
BOUNDARY**

CAMBURSE & THEODORE LTD.
 ARCHITECTS
ETITEIN
 233 B
 1000 EAST WISCONSIN STREET
 MILWAUKEE, WISCONSIN

Jewel Osco
 STORE # 01-1035
 EAST NORTH AVE. & NORTH HUMBOLDT AVE.
 MILWAUKEE, WISCONSIN

**DETAILED PLAN DEVELOPMENT
UTILITY PLAN**


 JEWEL OSCO
 1000 EAST WISCONSIN STREET
 MILWAUKEE, WISCONSIN

C3.0