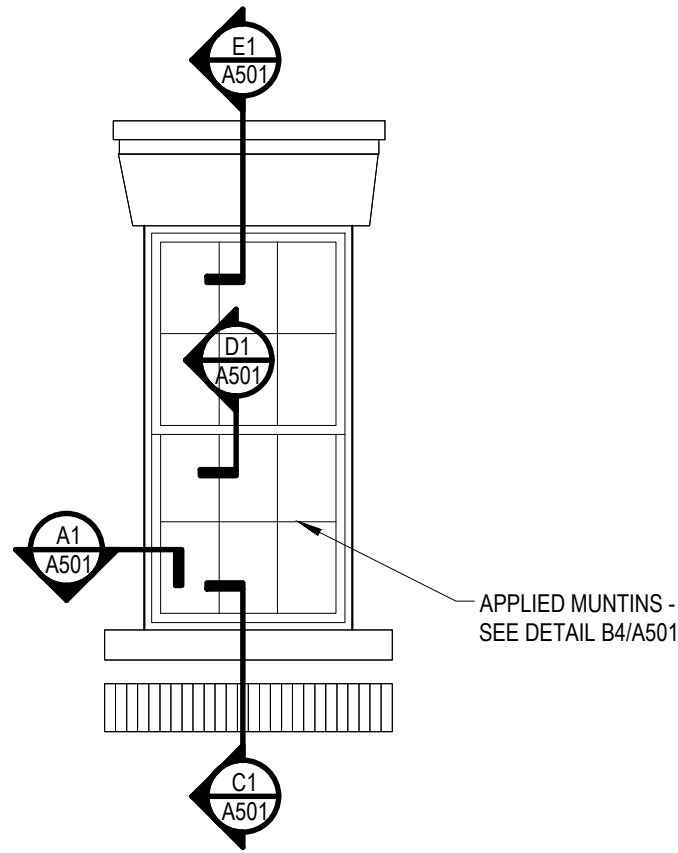
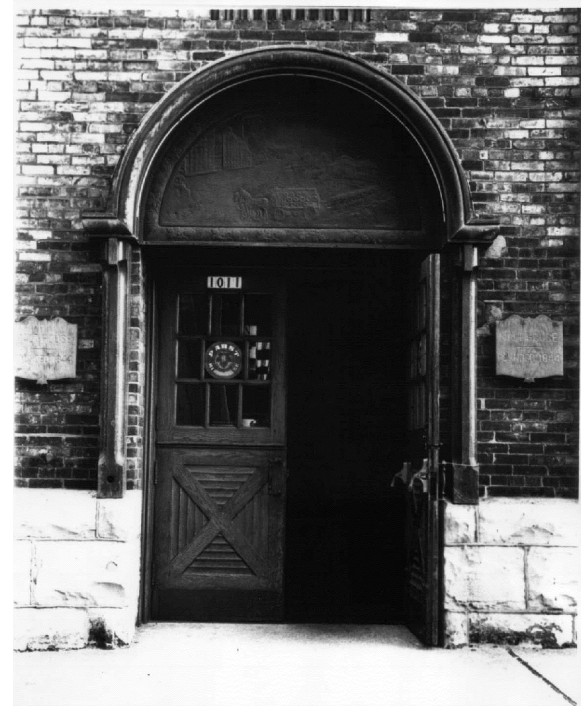


D3 TYPICAL ARCHED WINDOW ELEVATION
3/8" = 1'-0"
SEE A500 FOR MORE INFO



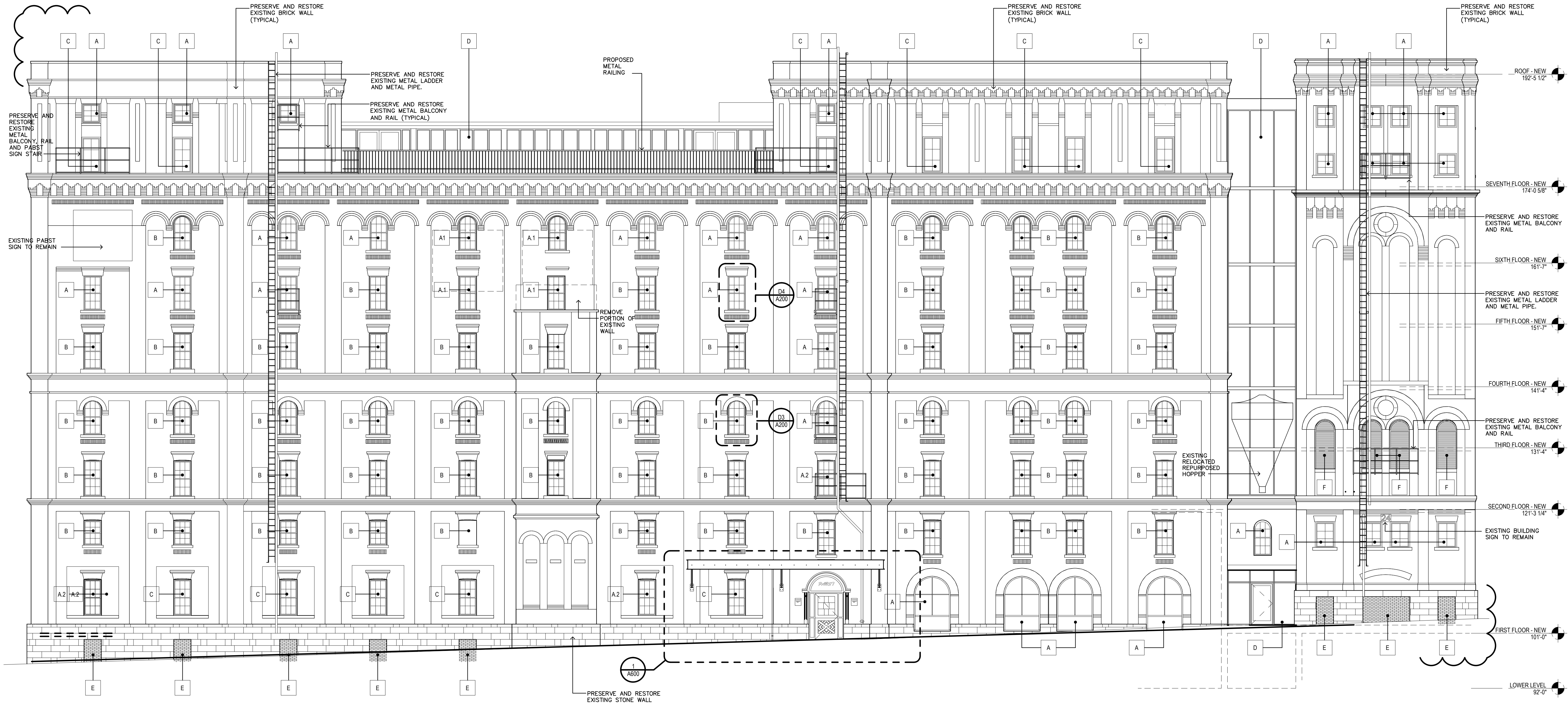
D4 TYPICAL WINDOW ELEVATION
3/8" = 1'-0"
SEE A500 FOR MORE INFO



MAIN ENTRANCE TO BE REPLICATED WITH
A SINGLE SWING 3'-8" DOOR W/ SIDELIGHTS
AND STAMPED COPPER ARCH

D5 MAIN ENTRANCE ELEVATION - ORIGINAL
3" = 1'-0"

LEGEND	
A	EXISTING WINDOW OPENING/ INSTALL NEW WINDOW REPLICA
A.1	EXISTING WINDOW OPENING/ INSTALL NEW WINDOW REPLICA (NEW SIZE)
A.2	EXISTING DOOR OPENING/ INSTALL NEW WINDOW
B	NEW WINDOW - PREVIOUSLY BRICKED-IN
C	BRAND NEW OPENING / NEW WINDOW REPLICA
D	NEW CURTAIN WALL
E	EXISTING BRICKED-IN OPENING TO REMAIN BRICKED-IN
F	EXISTING LOUVERS/ INSTALL NEW LOUVER
G	EXISTING BRICKED-IN OPENING/ NEW DOOR
H	EXISTING WINDOW TO REMAIN



A5 PROPOSED NORTH ELEVATION
SCALE: 1/8" = 1'-0"

AND OBTAIN OUR APPROVAL IN WRITING BEFORE
PROCEEDING WITH WORK. THIS OFFICE OF ANY
ARCHITECTS SHALL NOT BE RESPONSIBLE FOR
CONTRACTORS SHALL VERIFY ALL DIMENSIONS AT
JOB SITE AND NOTIFY ARCHITECTS IMMEDIATELY
IF ANY DISCREPANCIES ARE DISCOVERED.
THESE DRAWINGS ARE THE PROPERTY OF
THE OFFICE. WRITTEN PERMISSION FROM THIS
OFFICE IS REQUIRED FOR ANY REPRODUCTION,
REPRODUCTION OR COPIED IN ANY FORM OR MANNER
WHATSOEVER, NOR ARE IDEAS AND DESIGNS
THESE PLANS, GOLDHOLZ ASSOC. ARCHITECTS
PLANNERS P.A. HEREBY RESERVES ITS

PABST APARTMENTS
1003-1023 WEST JUNEAU AVENUE
MILWAUKEE, WISCONSIN

7-24-2014
9-02-2014

ITAMAR GOLDENHOLZ
FL. LIC. AR0007817



c.n.

A200

p.n. 14010

goldenholz & associates architects planners p.a. 3122 n. pine island road, sunrise, florida 33351 (954) 742-0797 fax (954) 742-3093