

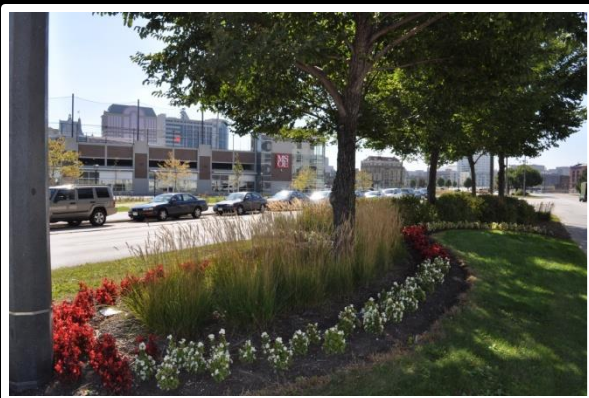
# City of Milwaukee - RACM



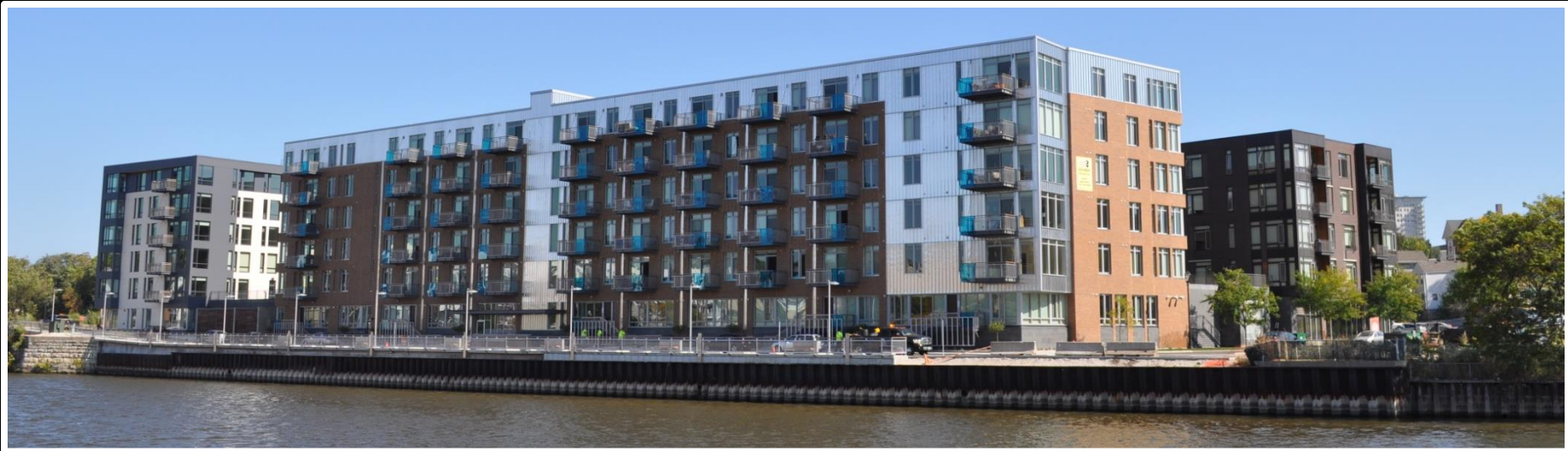
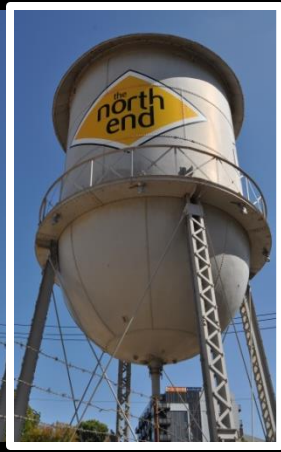
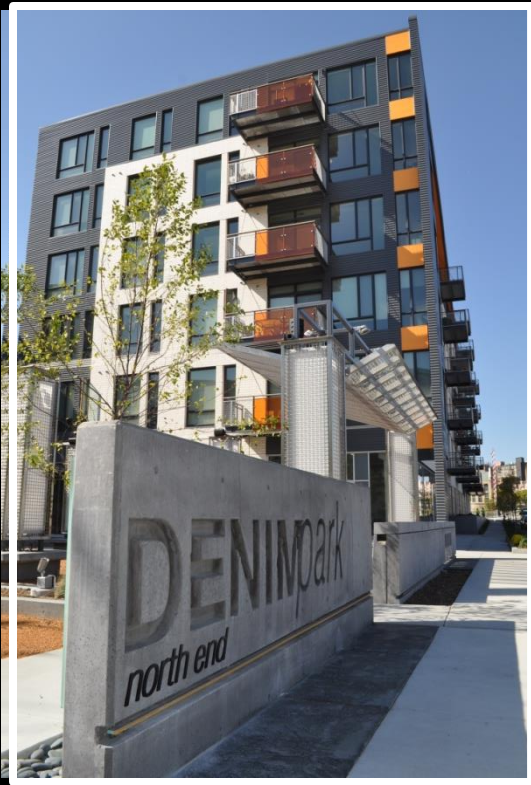




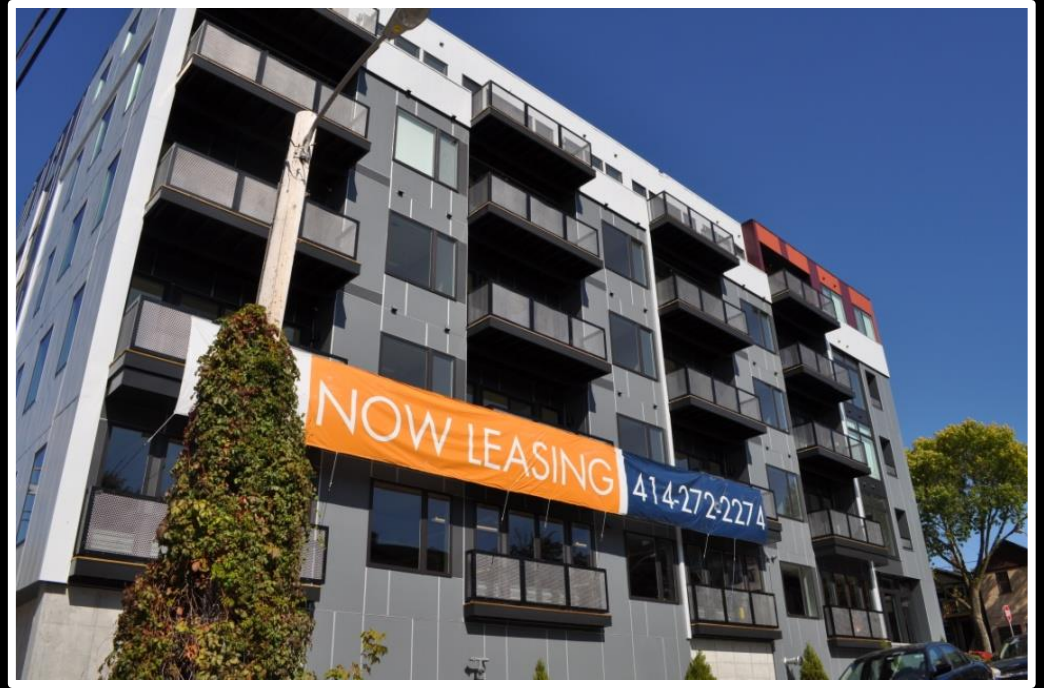




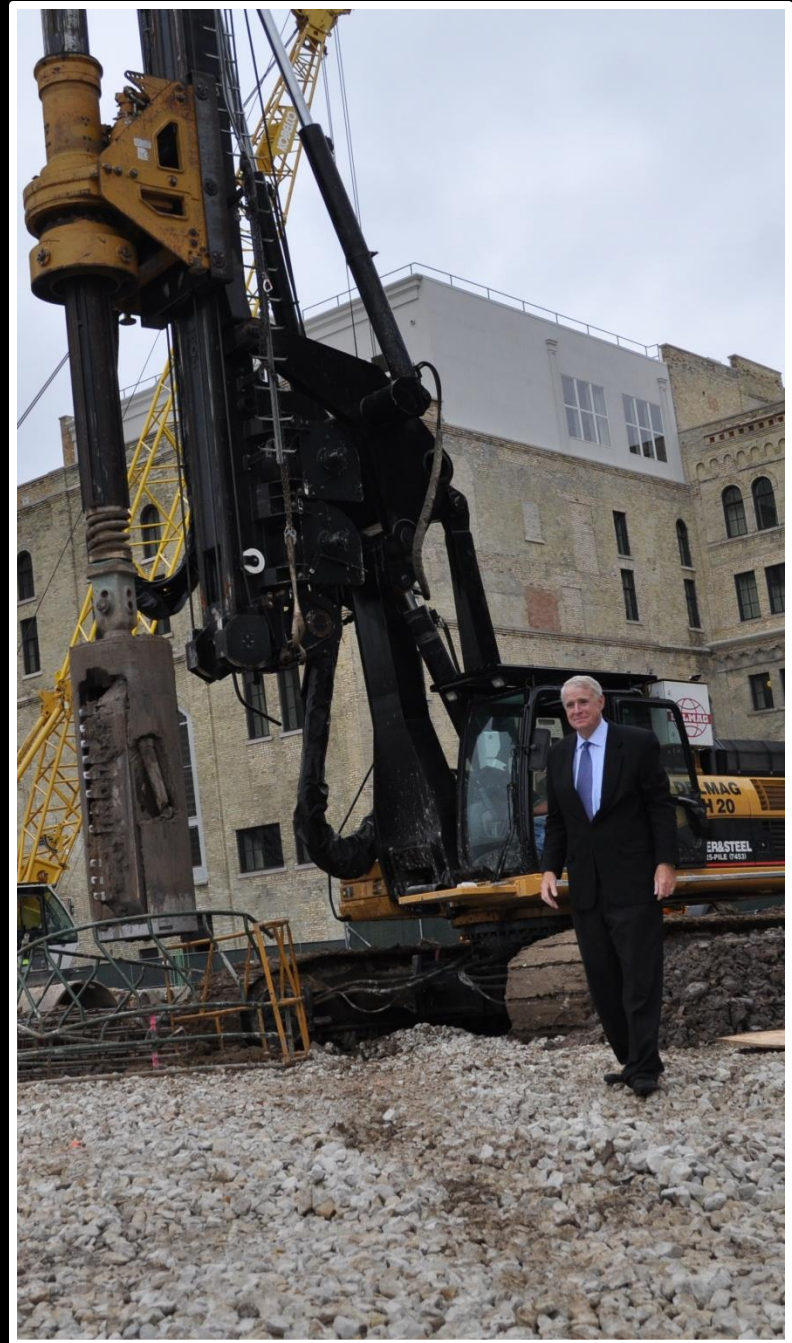




















**BRONZEVILLE WEEK**  
The place where history, culture, and community meet.

FOR ADDITIONAL DETAILS:  
[www.milwaukee.gov/bronzeville](http://www.milwaukee.gov/bronzeville)









# Lakefront Gateway



eppstein uhen : architects

**CH2MHILL**





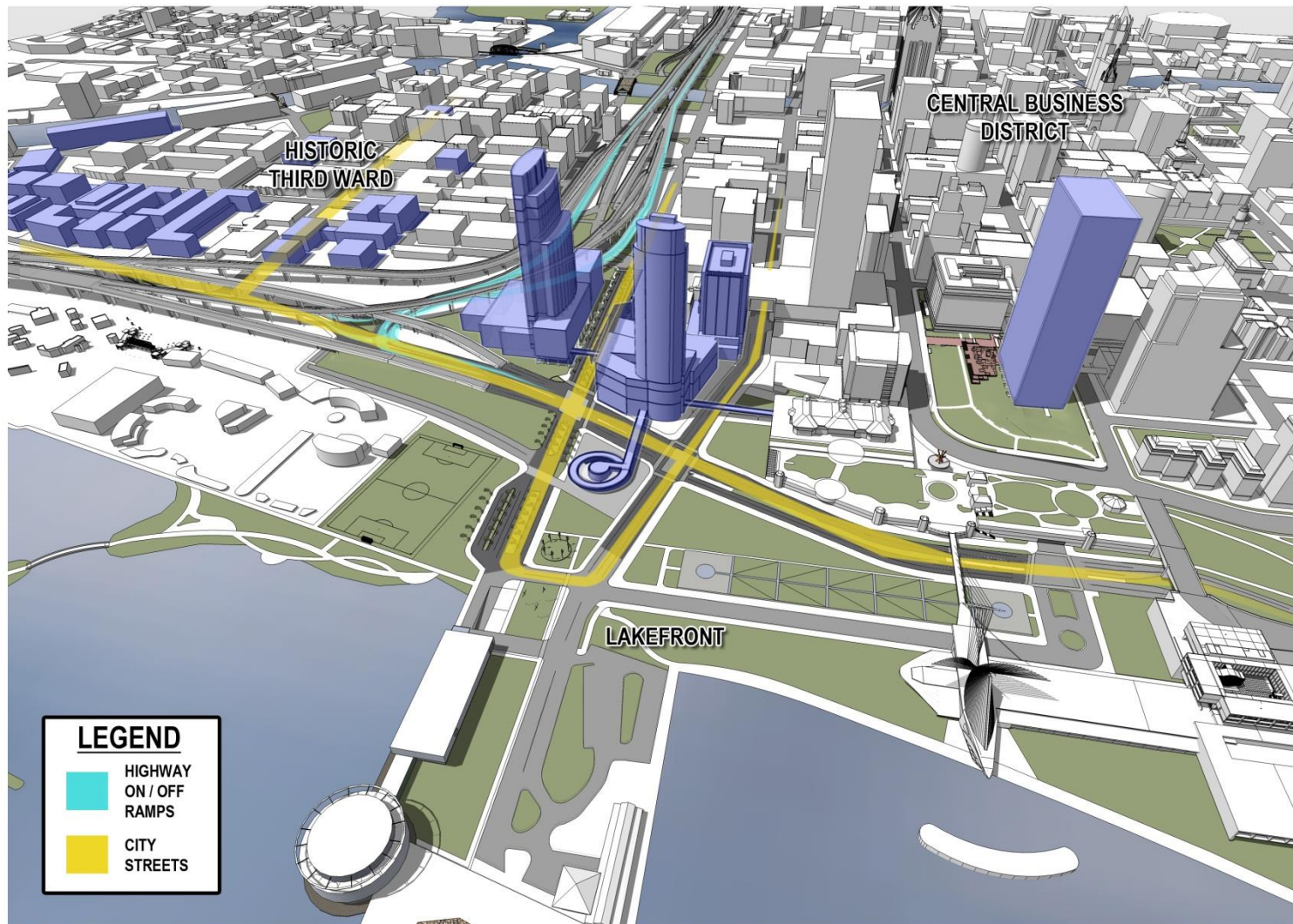




Northwestern  
Mutual®







# LAKEFRONT GATEWAY PROJECT

Overall Plan

03/01/2013



# CENTRAL HEAVY INDUSTRIAL SITES



**30TH STREET  
INDUSTRIAL  
CORRIDOR**

**CANAL/  
MENOMONEE  
VALLEY**

**PORT OF  
MILWAUKEE**

*Lake Michigan*



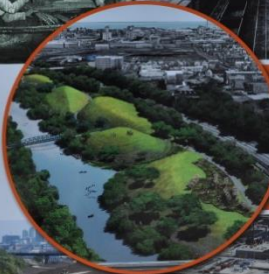




# Welcome to Three Bridges Park

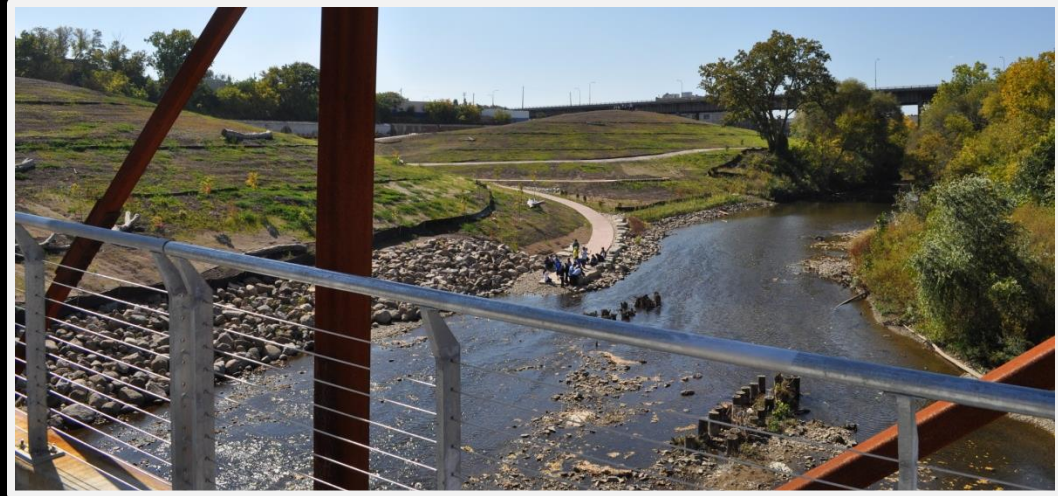


## A project of MEMORONEE VALLEY FROM THE GROUND UP



This land has deep roots in Milwaukee's history and is just beginning to grow roots for Milwaukee's future.

Once a wild rice marsh harvested by Native Americans, the 24-acre stretch became a rail yard for the Milwaukee Road. After the Milwaukee Road closed, the land sat vacant for decades. This new park is part of the Hank Aaron State Trail and is the outdoor science classroom for the Urban Ecology Center. Enjoy exploring Three Bridges Park now and come back to watch it grow!



## A project of MEMORONEE VALLEY FROM THE GROUND UP

A COLLABORATION OF  
MEMORONEE VALLEY PARTNERS, INC. & URBAN ECOLOGY CENTER



PLEASE STAY ON TRAILS TO PROTECT PLANTINGS & TREES









2.5

2.5 acres for sale

Mayor Tom Barrett & the City of Milwaukee present...

# Menomonee Valley Industrial Center

- Zoned industrial
- Parcels from 1-10 acres

CALL

414-274-4655







Surplus Former Marquette Interchange Sites

# Aerial and Ground Views



Imagery ©2013 DigitalGlobe, GeoEye, U.S. Geological Survey, USDA Farm Serv





# MENOMONEE VALLEY 2.0

**WE'RE NOT DONE YET**

Help us #PlanTheValley at [PlanTheValley.org](http://PlanTheValley.org)















# Menomonee Valley



Menomonee Valley Shops  
TID (No. 53)

City Lights  
TID (No. 73)

Intermodal Station  
TID (No. 60)

Harley -Davidson TID (No. 57)

Rexnord/Falk  
TID (No. 63)

The Tannery  
TID (No. 26)

Reed Street Yards  
TID (No. 75)



# CENTRAL HEAVY INDUSTRIAL SITES



**30TH STREET  
INDUSTRIAL  
CORRIDOR**

**CANAL/  
MENOMONEE  
VALLEY**

**PORT OF  
MILWAUKEE**

*Lake Michigan*



# Milwaukee's Inner Harbor

A multi-year  
focus For the School of  
Architecture and Urban  
Planning

Funding Provided by:

**The Brico Fund**

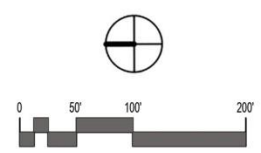
The SARUP Urban Edge  
Prize. The UWM Graduate School  
and others





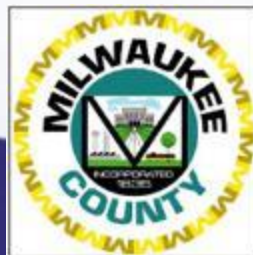








# Public-Private Partnership





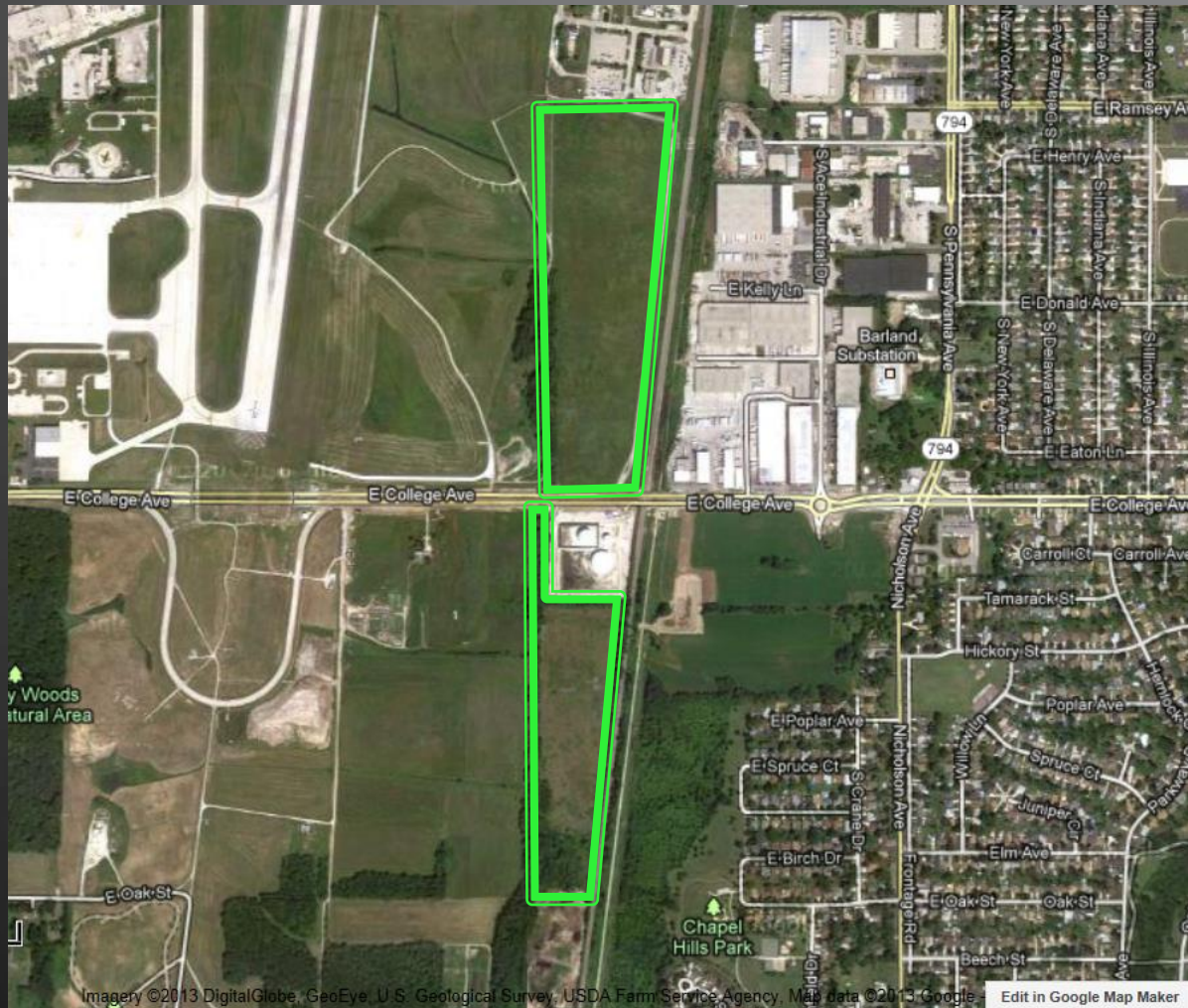
Former 440th Air Base

# Aerial View

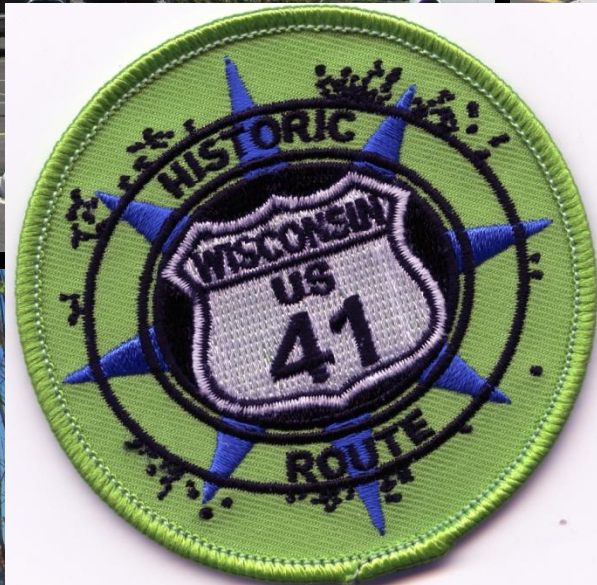




# Aerial View









# CENTRAL HEAVY INDUSTRIAL SITES



**30TH STREET  
INDUSTRIAL  
CORRIDOR**

**CANAL/  
MENOMONEE  
VALLEY**

**PORT OF  
MILWAUKEE**

*Lake Michigan*



# 30TH STREET CORRIDOR

**DRS**

**EATON**

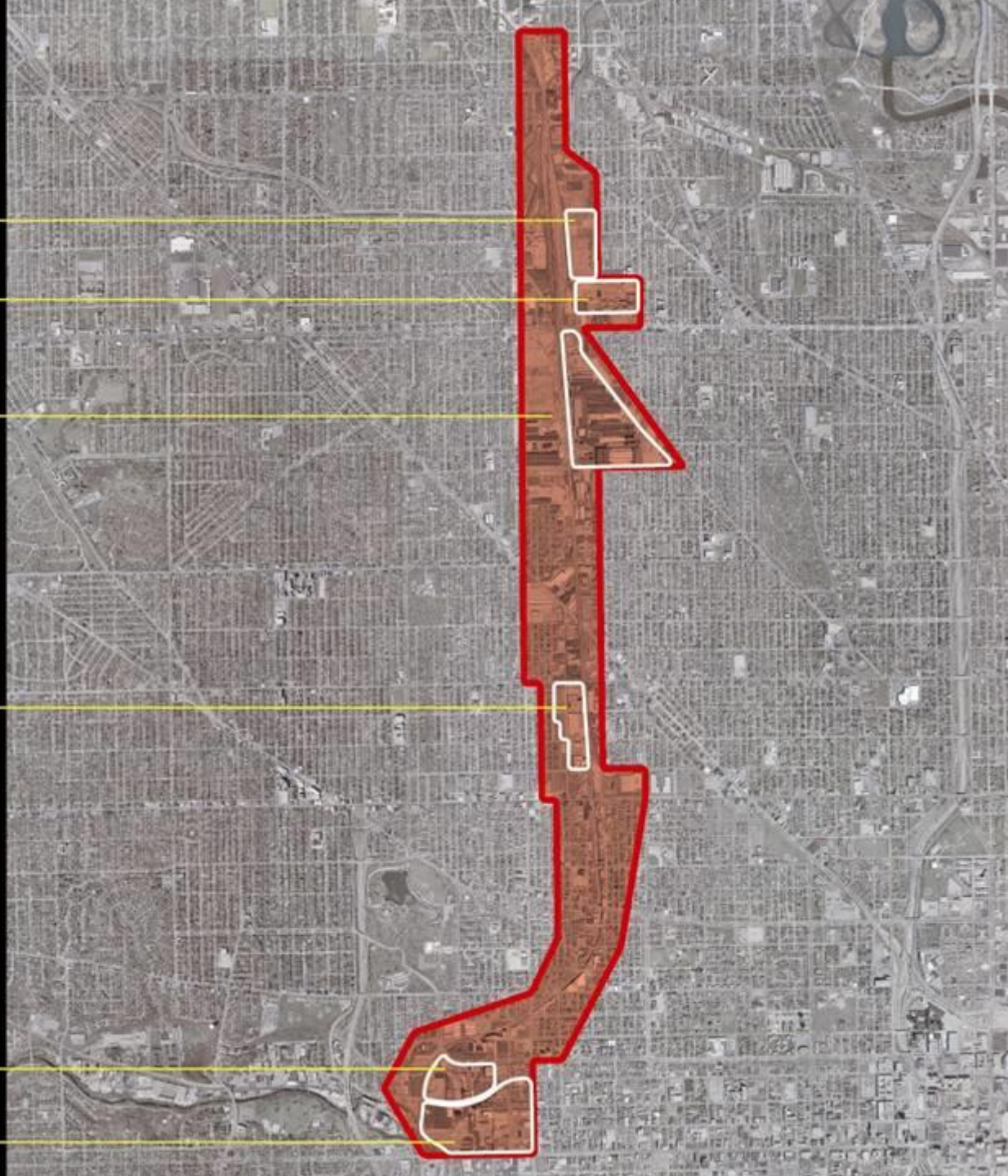
**TOWER AUTOMOTIVE**

(85 ACRES)

**MASTERLOCK**

**HARLEY-DAVIDSON**

**MILLER BREWING**











XYZ CORP

CENTURY CITY











# Century City II

---

**“Jonco president acquires Eaton building”**

**-Business Journal, April 13, 2011**

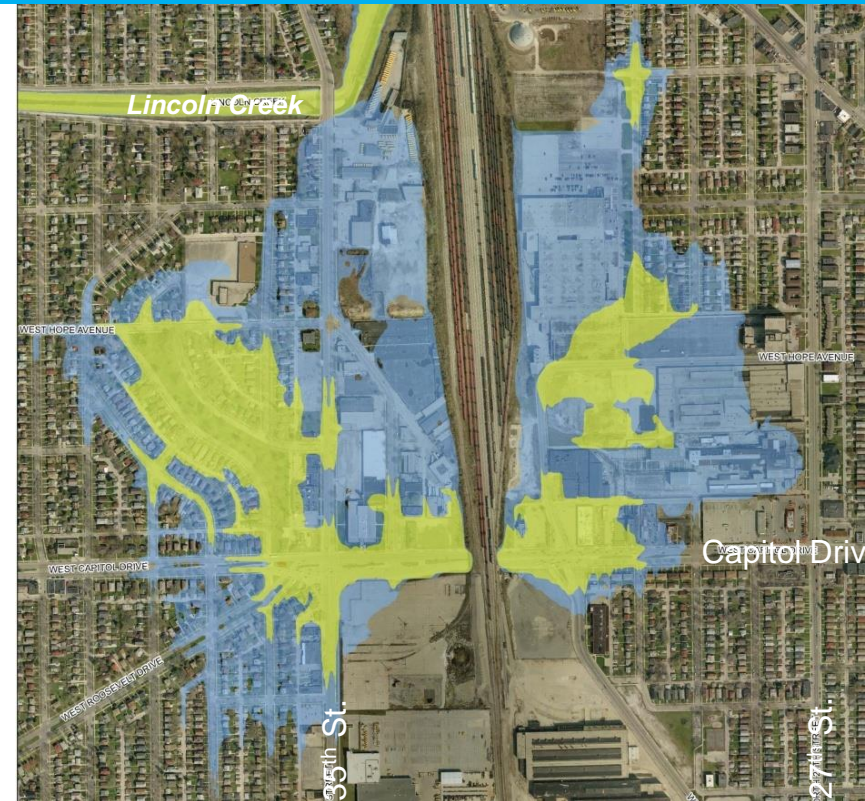




# NORTH SEGMENT FLOODING PROBLEMS



- Hydrologic/hydraulic analysis
- Ponding areas
- Reported damages >\$30 M
- Problems:
  - Limited pipe capacity
  - Lack of defined and continuous overland flow paths
  - Limited capacity of receiving system









LOVE TO COOK—COOK TO LOVE

# Penzeys Spices

## Great Milwaukee

Volume One, Issue One

Brat, Beer and Cheese Soup • Apple Kuchen • Country-Style Pork Chops



Love People.  
Cook them tasty food.

SEPTEMBER 2013 NEWSLETTER

# GRANVILLE GAZETTE

GRANVILLE BUSINESS IMPROVEMENT DISTRICT

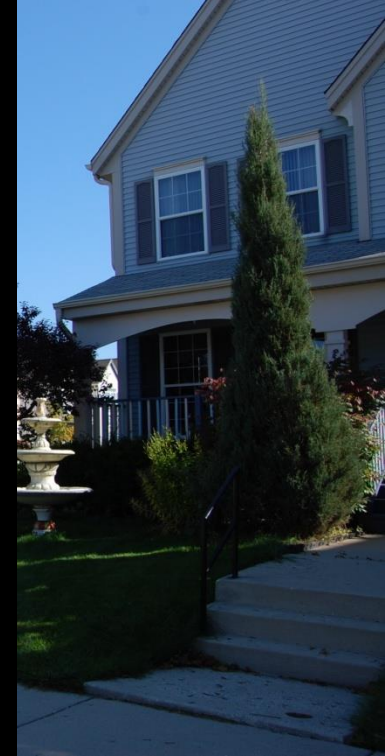
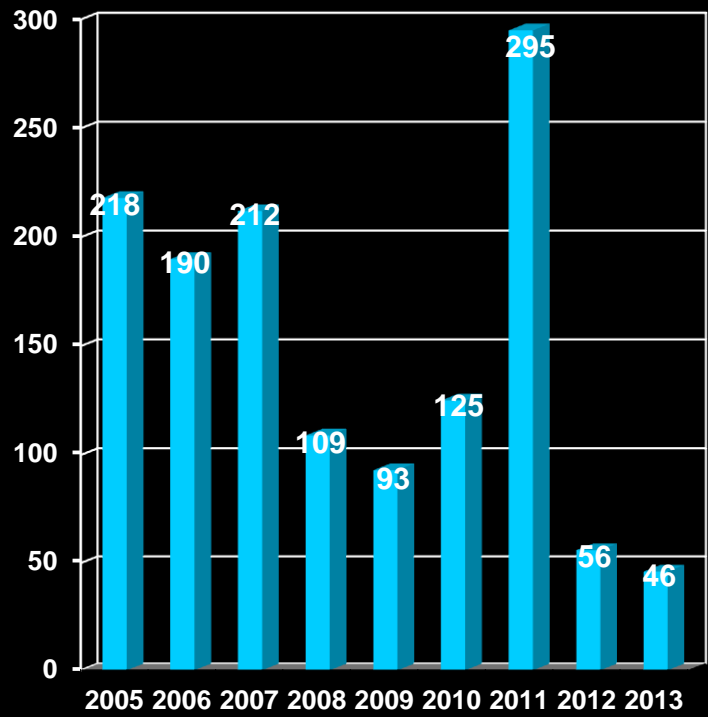
INSIDE

ACTS OF KINDNESS

MPD BIKE DONATION

Primary Care











# ReFresh Milwaukee



**FRESH COAST. FRESH IDEAS.**  
A Vision for Community Sustainability  
[www.ReFreshMKE.com](http://www.ReFreshMKE.com)







# Brownfield Program since 2003

- Inaugural Members of the Brownfield Study Group for the State that has created legislation over the years to address brownfields
- RACM has been the recipient of more State of Wisconsin Department of Natural Resources and Economic Development Corporation brownfield grants than any other community in the State - \$12.3 million
- RACM has been the recipient of more US Environmental Protection Agency and Department of Housing and Urban Development brownfield grants than any other organization in the United States - \$23.1 million





# Brownfield Program since 2003

- Assessments

- Assessed hundreds of properties to protect the City from liability and to manage risk of City-owned properties

- Cleanups

- Assisted in remediating 42 properties and over 250 acres in the City – 3 grants for Century City in 2013

- Loans

- Provided 13 loans totaling \$10.2 million to developers to manage environmental issues associated with their properties – two loans provided in 2013 for \$2.25 million