

# 2008 Report of Injuries - MPD

## INDICATORS

*Volume- Number of Claims, WC Expenditures, Injury Pay*

*Severity – Recordable Cases / Lost Workdays*

*Incidence Rate*

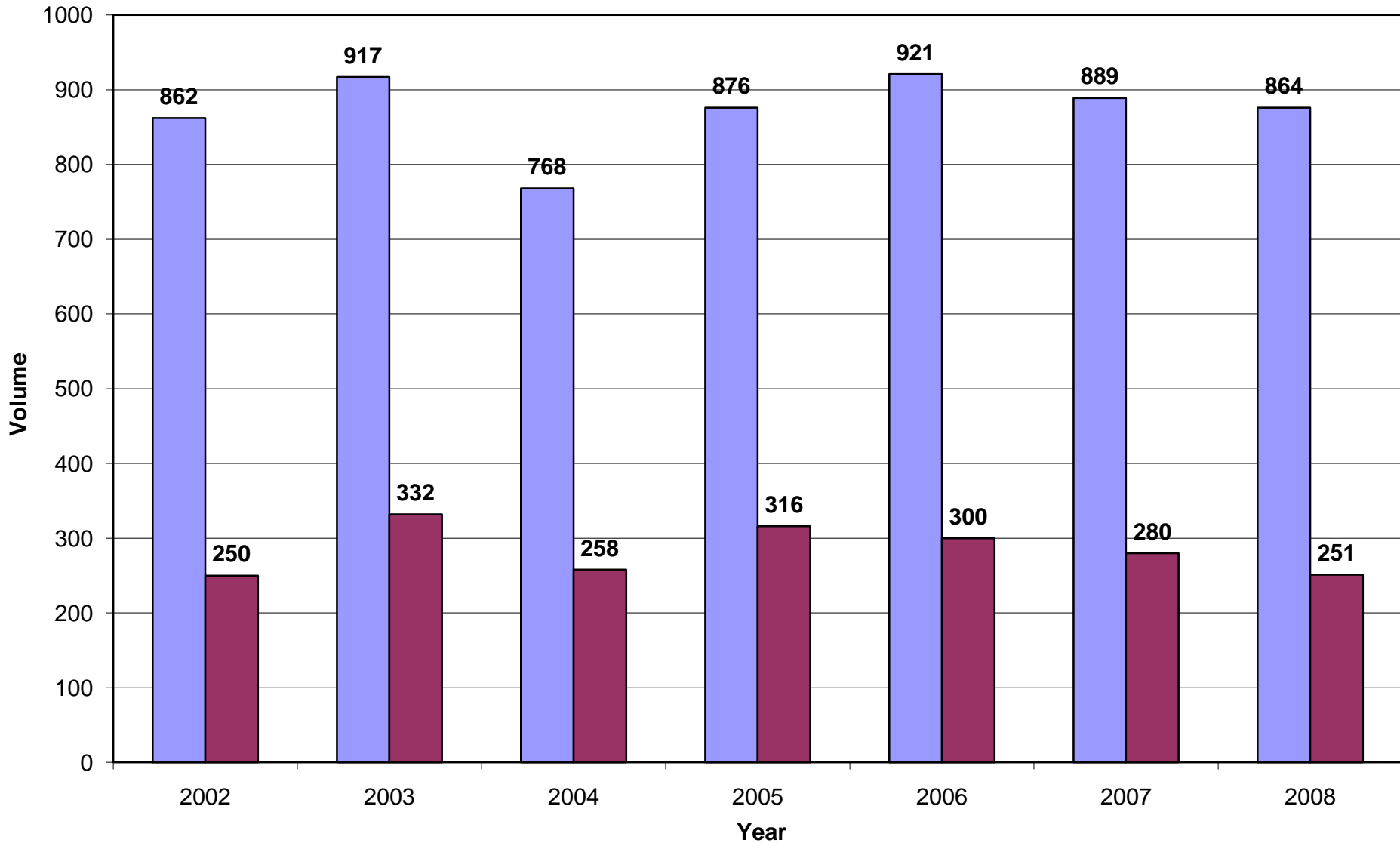
## SAFETY PLAN COMPONENTS/FINDINGS

**NEXT STEPS: BENCHMARKS AND ACCOUNTABILITY**

# MILWAUKEE POLICE DEPARTMENT

MPD	2002	2003	2004	2005	2006	2007	2008	3 Yr Avg
<b>Claims</b>	862	917	768	876	921	889	864	892
<b>Recordable Cases</b>	250	332	258	316	300	280	251	277
<b>Incidence Rate</b>	10.96	14.3	11.43	13.51	13.55	12	10.69	12.08
<b>Lost Workdays</b>	3,296	4,474	3,931	5,106	4,017	2,316	3,441	3,258
<b>Injury Hours</b>	N/A	N/A	N/A	50,190.2	34,252.3	26,238.2	33,723.9	31,404.8
<b>Injury Pay</b>	\$696,798	\$826,406	\$897,847	\$1,064,451	\$754,151	\$586,863	\$770,166	\$703,727

# Milwaukee Police Dept



■ Claims ■ Recordable Cases

# Safety Plan Components

- Safety Policy Statement
- Roles and Responsibilities for Employees and Management
- Safety Programs/Training Provided
  - Legal and Other
- Department Injury Statistics and Analysis
  - Injury Classification Structure
  - Analysis of Injury Data 2005-2008
  - Injury Analysis Findings
- 2009-2010 MPD Safety Goals and Objectives

# MPD's Commitment to Safety

- . Safety is the first consideration of the Milwaukee Police Department. It is a basic responsibility of all members of the Department.
- It is the policy of the Milwaukee Police Department to strive for the highest standards of safety by providing an accident-free, healthy, safe and comfortable work environment by eliminating recognized hazards from the workplace.
- Occupational accidents and hazardous conditions can result not only in personal injury but can have a financial impact on the member and the Department as well

# 2005-2008 Injury Statistics

- Old Injury Classification Model

Duty Hazard – 73%

Accident – 10%

Exposure – 12%

Assault – 5%

# New Injury Classification Model

## Type of Duty

- *Admin*
- *Field Duty*
- *MTCE*
- *Training*
- *Prisoner Processing*

## Activity When Injured

- *Controlling & Arresting Subject*
- *Foot Patrol/Pursuit*
- *Traffic Stop*
- *Shooting Incident*
- *Vehicle Accident*

# MPD Injury Classification

TYPE OF DUTY	ACTIVITY WHEN INJURED
ADMINISTRATIVE	AROUND LOUD NOISE*
CROSSING GUARD DUTY*	ASSISTING CITIZEN OR VICTIM
FIELD DUTY-OTHER*	BICYCLE PATROL*
FIELD DUTY-PATROL	CLEANING AREA*
MAINTENANCE	CONDUCTING INVESTIGATION
OTHER (SPECIFY)	CONTROLLING OR ARRESTING SUBJECT
PRISONER PROCESSING SECTION*	CROSSING DUTIES*
TRAINING-IN SERVICE	DIRECTING TRAFFIC
TRAINING-OTHER	EXITING/ENTERING VEHICLE
TRAINING-RECRUIT SECTION	FIRE RESCUE OR DISCOVERY
	FOOT PATROL*
	FOOT PURSUIT*
	FORCING ENTRY
	IN COURSE OF NORMAL DUTIES*
	LIFTING PROPERTY
	OFFICE DUTIES
	OTHER (SPECIFY)
	PEDESTRIAN ACCIDENT
	PERSONAL CONTACT*
	PHYSICAL OVEREXERTION OR FITNESS
	PROCESSING PRISONER / BOOKING DUTIES
	SHOOTING INCIDENT
	SITTING IN SQUAD/AUTO*
	STRUCK BY OBJECT*
	TRAFFIC STOP
	TRAINING PARTICIPATION
	TRIP, SLIP, FALL
	USING POLICE EQUIPMENT
	USING, CLEANING, TESTING, MAINTAINING EQUIPMENT
	VEHICLE ACCIDENT-OTHER (SPECIFY)
	VEHICLE ACCIDENT-PURSUIT



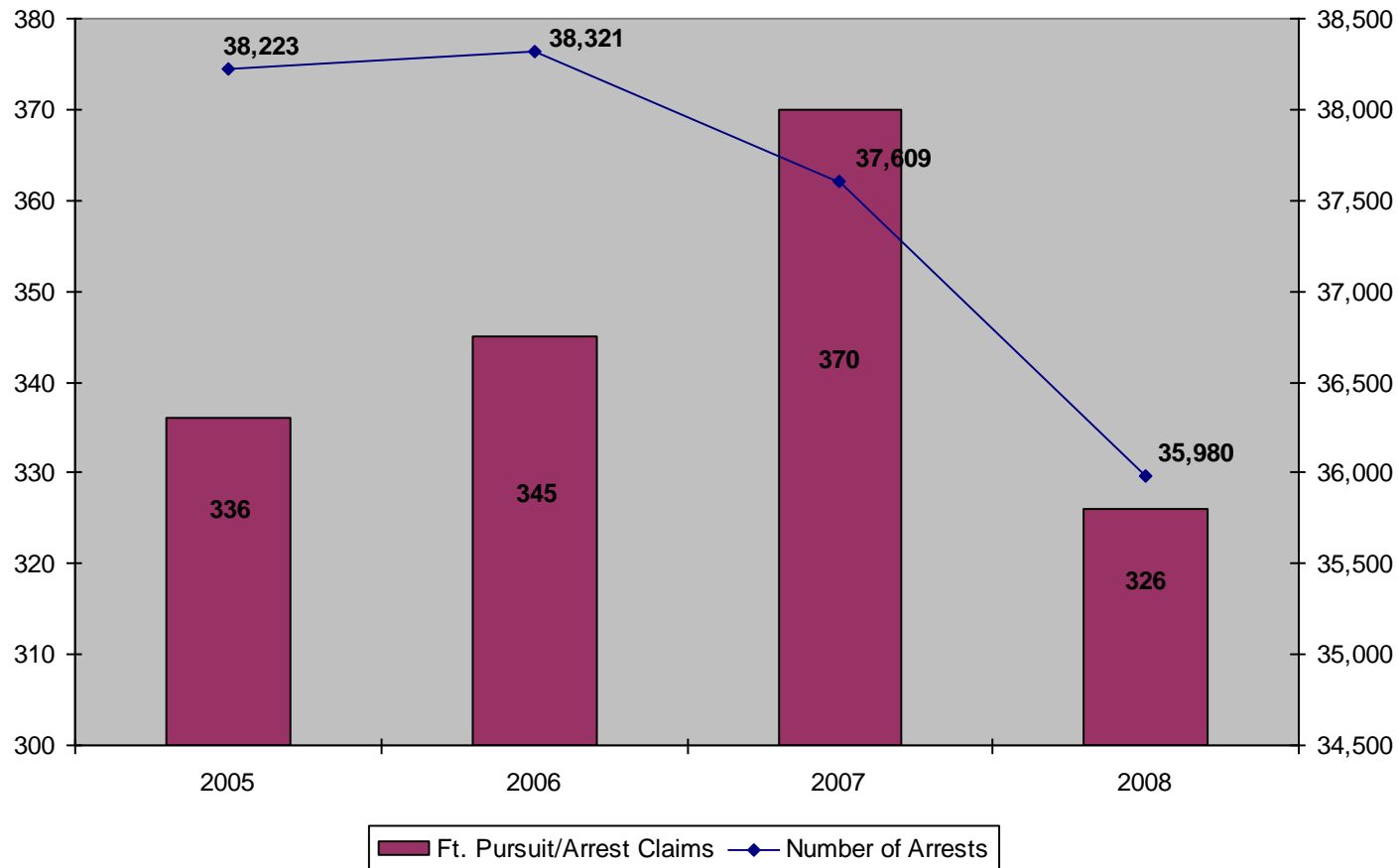
# MPD Claims by Type of Duty

<b>Type of Duty</b>	<b>2005</b>	<b>2006</b>	<b>2007</b>	<b>2008</b>
Administration	52	30	31	38
Field Duty - Other	123	50	26	22
Field Duty - Patrol	665	785	654	743
Maintenance	10	14	23	12
Not Available	6	7	78	11
Training In-Service	0	0	4	12
Training - Other	8	7	33	1
Training - Recruit Section	12	28	40	25
<b>Total</b>	<b>876</b>	<b>921</b>	<b>889</b>	<b>864</b>

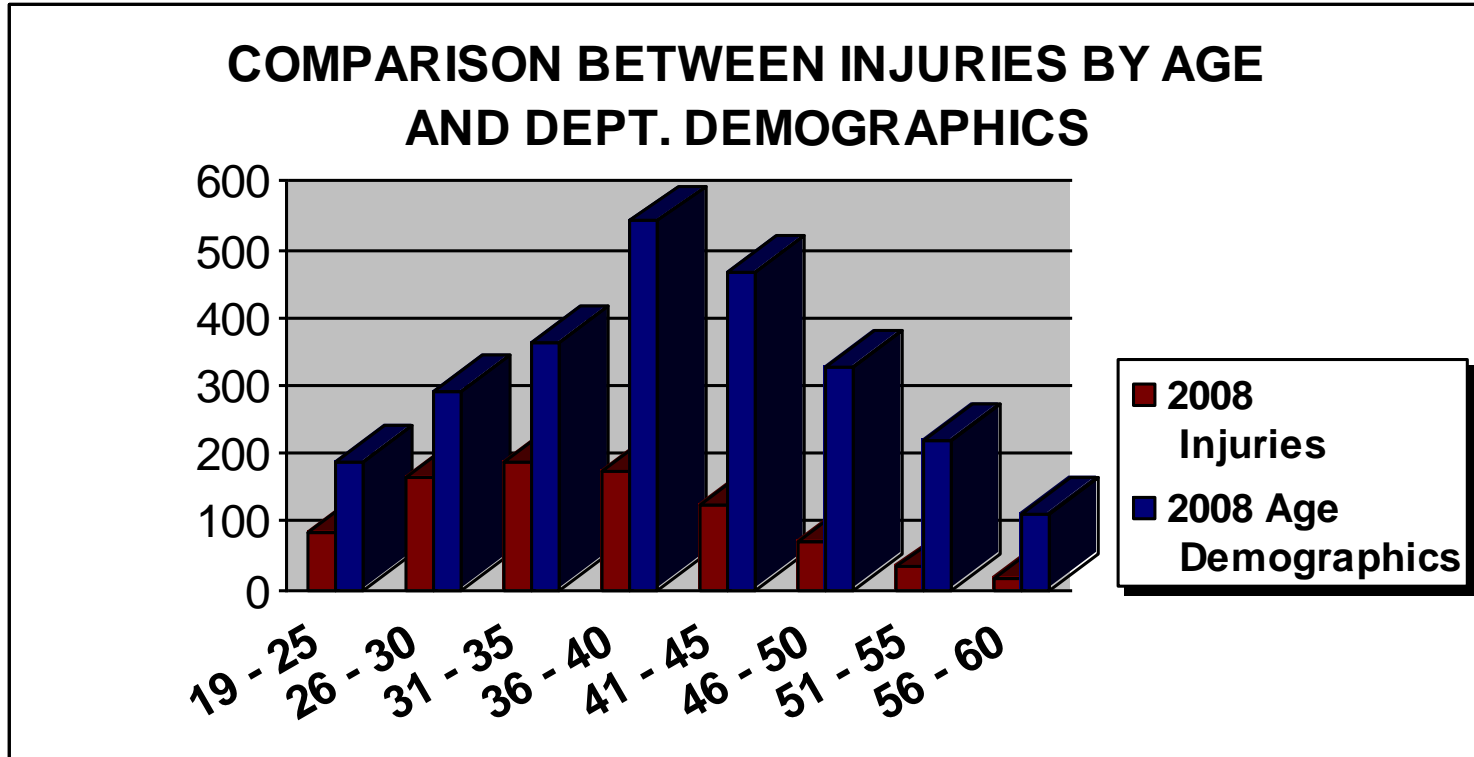
# MPD Injuries by Activity

	2005	2006	2007	2008	%
Activity When Injured	Number	Number	Number	Number	
Controlling/Arresting Suspects	265	239	267	245	28%
Conducting Investigations	30	57	166	127	15%
Apprehending Suspects-Foot Pursuits	71	106	103	81	9.3%
Vehicle Accident	86	80	57	50	5.7%
Processing/Transporting Prisoners	27	23	12	47	5.4%
Office Duties	19	22	11	39	4.5%
Training	14	31	54	38	4.4%
Assisting City or Victim	8	1	6	23	2.6%
Vehicle Accident-Pursuit	4	4	3	6	.7%
<b>TOTAL CLAIMS</b>	<b>876</b>	<b>921</b>	<b>889</b>	<b>864</b>	

# MPD Arrests Compared to Foot Pursuit & Controlling/Apprehending Subject Injuries



# MPD Injuries by Age



# MPD Injury Claims by Age

Age Range	2005	Percent of Total	2006	Percent of Total	2007	Percent of Total	2008	Percent of Total
19-25	62	7.1%	57	6.2%	86	9.7%	82	9.5%
26-30	166	18.9%	157	17.0%	146	16.4%	165	19%
31-35	225	25.7%	234	25.4%	185	20.8%	186	21.5%
36-40		21.6%	189	20.5%	188	21.1%	173	20%
41-45	89	10.2%	123	13.4%	133	15.0%	125	14.5%
46-50	69	7.9%	87	9.4%	80	9.0%	71	8.2%
51-55	46	5.3%	44	4.8%	46	5.2%	32	3.7%
56-60	19	2.2%	22	2.4%	15	1.7%	112	12.9%
<b>Total</b>	<b>876</b>	<b>100.0%</b>	<b>921</b>	<b>100.0%</b>	<b>889</b>	<b>100.0%</b>	<b>864</b>	

# MPD Safety Plan Highlights/Goals

- Responsibility for safety function is centralized within the Medical Section for enhanced recordkeeping, data analysis, and intervention identification.
- Enhances supervisory accountability for safety by:
  - Including safety performance goals as components of job descriptions for Sergeants and above
  - Modifying performance evaluation instrument to incorporate safety measures and goals
- Implementation of Hazardous Workplace/Conditions Report and related protocol
- Establish workplace safety curriculum for all members based on injury analysis.
- Benchmark comparable departments and injury data.