



MILWAUKEE
HISTORIC
PRESERVATION
COMMISSION

LIVING WITH HISTORY

Certificate of Appropriateness

Milwaukee Historic Preservation Commission/200 E. Wells Street/Milwaukee, WI 53202/phone 414-286-5712/fax 414-286-3004

Property 2597 N. DOWNER AV. Downer Avenue Historic District
Description of work Install new individual letter signage.
Date issued 4/10/2013 PTS ID 84095 COA, signage

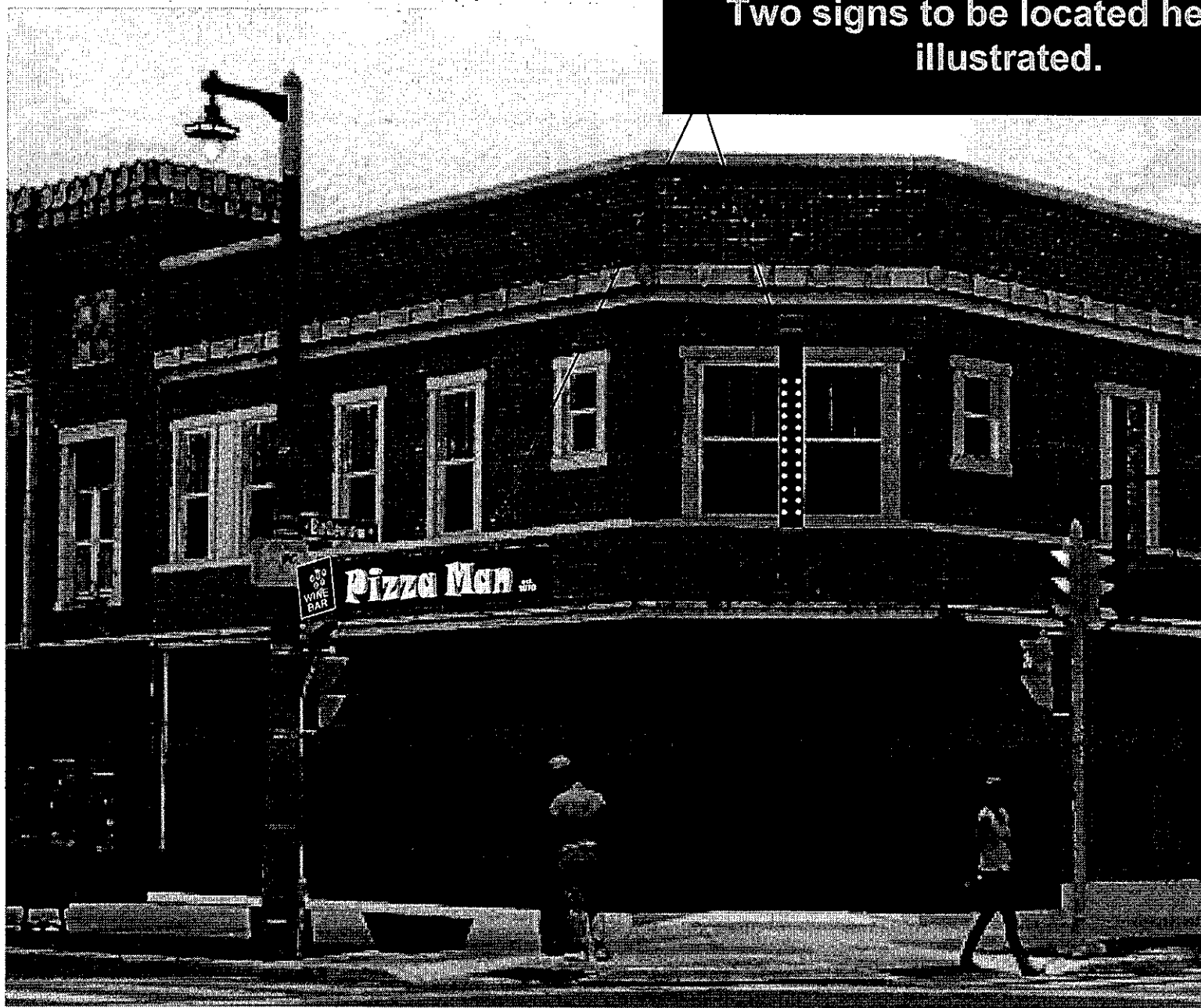
In accordance with the provisions of Section 320-21 (11) and (12) of the Milwaukee Code of Ordinances, the Milwaukee Historic Preservation Commission has issued a certificate of appropriateness for the work listed above. The work was found to be consistent with preservation guidelines. The following conditions apply to this certificate of appropriateness: Flat wall sign will be reverse channel, individually illuminated letters with the exception of small type B tag line at one corner. Projecting signs will be type A individual letters made from letters that are routed out of a solid black aluminum panel and then backed with yellow vinyl behind each letter. The cabinet will be internally illuminated and the cabinet bulbs on the perimeter WIL NOT be tracers. All work will be done according to attached drawings. ANY SIGNAGE ON GLASS WINDOWS, EXCLUDING HOURS OF OPERATION, MUST BE REVIEWED AND APPROVED BY HPC STAFF.

All work must be done in a craftsman-like manner, and must be completed within one year of the date this certificate was issued. Staff must approve any changes or additions to this certificate before work begins. Work that is not completed in accordance with this certificate may be subject to correction orders or citations. If you require technical assistance, please contact Paul Jakubovich of the Historic Preservation staff as follows: Phone: (414) 286-5712 Fax: (414) 286-3004 E-mail: pjakub@milwaukee.gov. If permits are required, you are responsible for obtaining them from the Milwaukee Development Center. If you have questions about permit requirements, please consult the Development Center's web site, www.milwaukee.gov/build, or call (414) 286-8210. You must present this signed Certificate of Appropriateness to the Plan Examination department in order to continue the permit process.

Paul Jakubovich
City of Milwaukee Historic Preservation

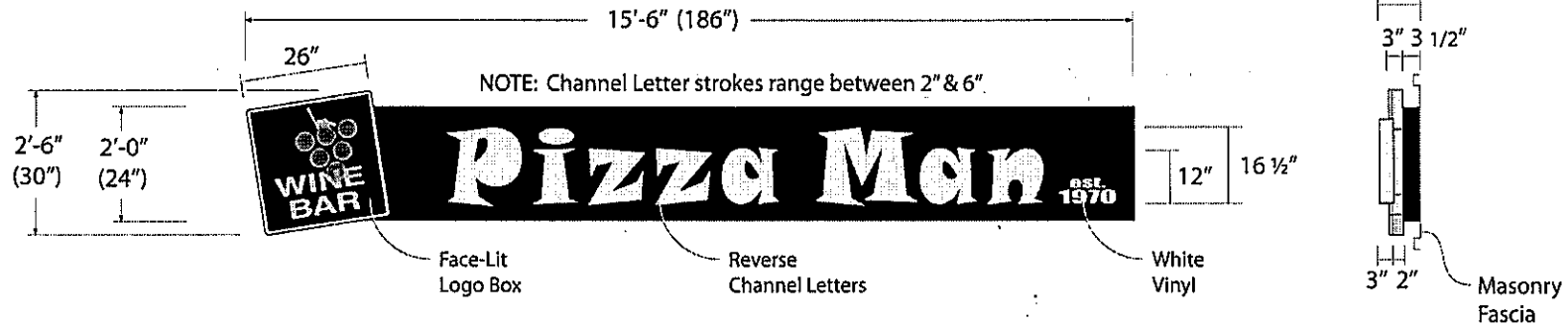
Copies to: Development Center, Ald. Nik Kovac, Contractor LMS Sign, Inspector Bill Richter (286-2518), Inspector Heidi Weed

Two signs to be located here as illustrated.



FIELD SURVEY REQUIRED PRIOR TO FABRICATION

- SIGN PLACEMENT DIMENSIONS TO BE FIELD VERIFIED PRIOR TO FABRICATION.



A Single Face Illuminated Wall Sign

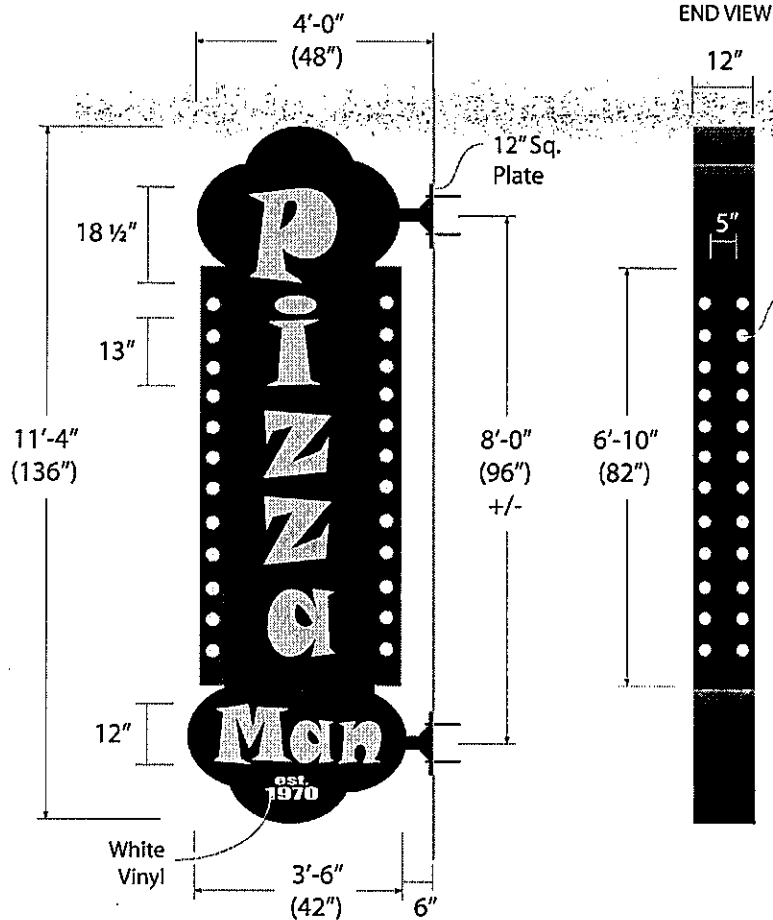
SPECIFICATIONS FOR FABRICATION AND INSTALLATION:

- Internally illuminated cabinet built to UL specifications
- Quantity: One (1)
- Construction type: Extruded aluminum
- Overall length of sign: 15' - 6" / Overall height of sign: 2' - 0"
- Total square feet: 31
- Cabinet depth: +/- 3"
- Letters: Aluminum Reverse Channel 3" deep, 2" stand off
- Paint: Gold PMS 114C, and Black (satin finish)
- Logo Box: Matte Black opaque Lexan face w/ first surface vinyl graphics
- Trim Cap: Gold
- Mounting method: Consealed anchors flush to masonry wall
- Illuminated with white LED's
- Primary electrical requirement: 120 Volt
(installed within six feet of sign by others)
Timer or photo-cell (installed by others)



ATTENTION: PROOF ALL DRAWINGS CAREFULLY! IT IS THE RESPONSIBILITY OF THE CUSTOMER TO APPROVE COLOR, STYLE, SHAPE, PROPORTION OF GRAPHICS AND LOGOS, AND SPELLING OF TRADEMARKS AND SERVICEMARKS

Two signs to be installed. The flat sign on the left is illustrated here. The letters are reverse channel, internally illuminated, Type A



(B)

Double Face Illuminated Wall Sign

SPECIFICATIONS FOR FABRICATION AND INSTALLATION:

- Internally illuminated cabinet built to UL specifications
- Quantity: One (1)
- Construction type: Extruded aluminum
- Overall width of sign: 3' - 6" / Overall height of sign: 11' - 4"
- Total square feet: 39.66
- Cabinet depth: +/- 12"
- Face type: Routed aluminum backed up w/ Yellow plex (PMS 114C)
- Paint: Black & Medium Grey (satin finish)
- Mounting method: 3" square tubes w/ plates, gussets & anchor bolts
- Illuminated with high output fluorescent lamps & exposed chaser bulbs
- Primary electrical requirement: 120 Volt (installed within six feet of sign by others)
- Timer or photo-cell (installed by others)



FIELD SURVEY REQUIRED PRIOR TO FABRICATION

- SIGN PLACEMENT DIMENSIONS TO BE FIELD VERIFIED PRIOR TO FABRICATION.

ATTENTION: PROOF ALL DRAWINGS CAREFULLY! IT IS THE RESPONSIBILITY OF THE CUSTOMER TO APPROVE COLOR, STYLE, SHAPE, PROPORTION OF GRAPHICS AND LOGOS, AND SPELLING OF TRADEMARKS AND SERVICEMARKS

Projecting sign at corner. All letters will be routed out of an aluminum face panel and backed with yellow vinyl, internally illuminated Type A. The exposed bulbs WILL NOT be tracers.