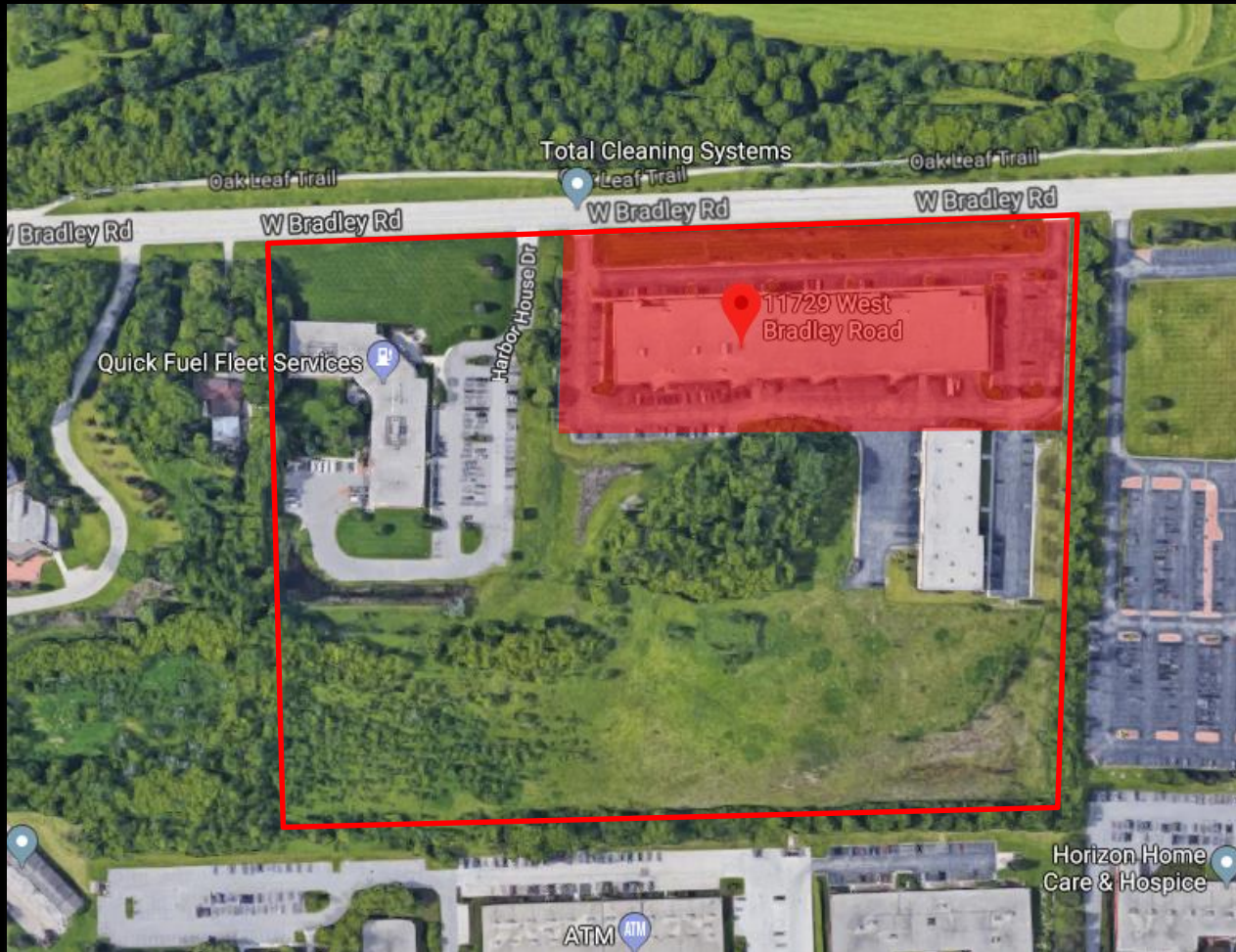


File No. 180437. Substitute resolution relating to a Minor Modification to the Detailed Planned Development known as the Jacobus Company Development, Phase 1, to permit additional wall signs on the existing building at 11729 West Bradley Road, located on the south side of West Bradley Road, east of West Park Place, in the 5th Aldermanic District.



File No. 180437. Site Context Photos



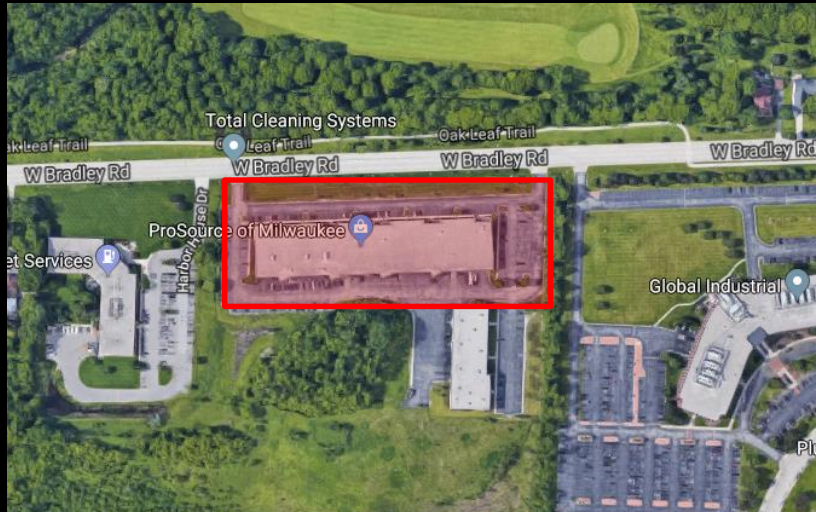
View southwest from W. Bradley Road



View southeast from W. Bradley Street



Aerial view south from W. Bradley Road

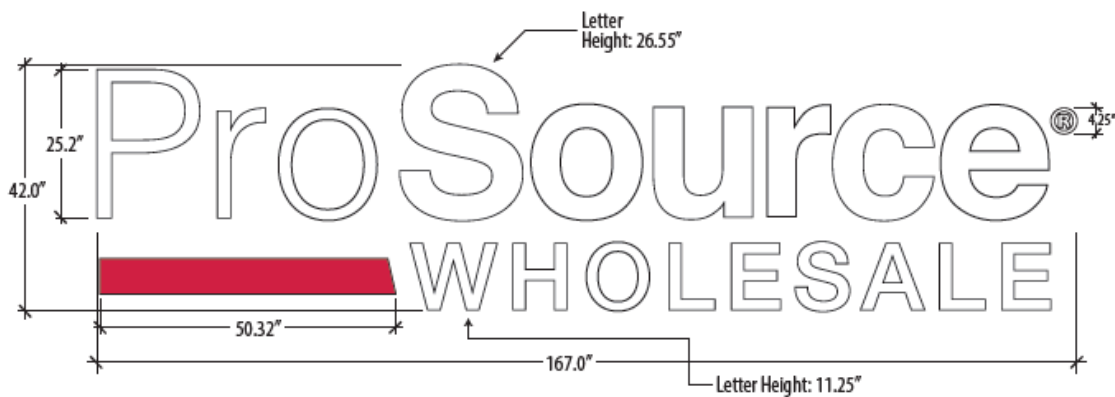


File No. 180437. Bradley Road Facade



File No. 180437. Bradley Road Facade





www.Innovative-Signs.com

Client

Kerns Carpet One

EST/INV #

EST - 418

Size

167.0" x 42.0"

Quantity

1 2 3 4 5 88

Materials & Specs

Channel Letters

LED Lit
White Faces
Black Trim Cap and Return

Colors

- Black Trim Cap & Return
- Pantone 200
- White

Revisions

- REVISION
- REVISION
- REVISION
- REVISION
- REVISION

Representative

Justin S.

Designer

Brian Harrigan
Date: 04/26/2018