

355

N.E. 1/4 SEC. 21, T.7N., R.22E.

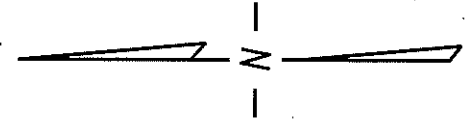
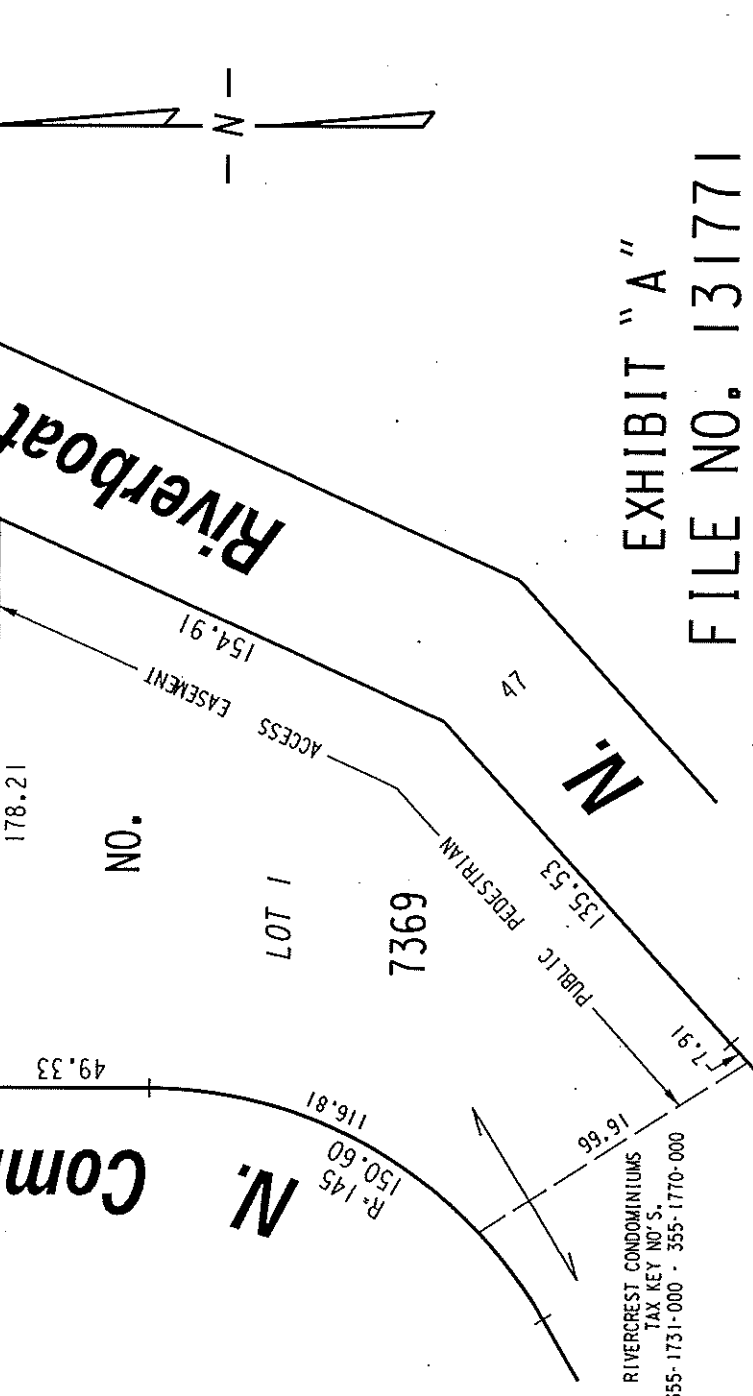
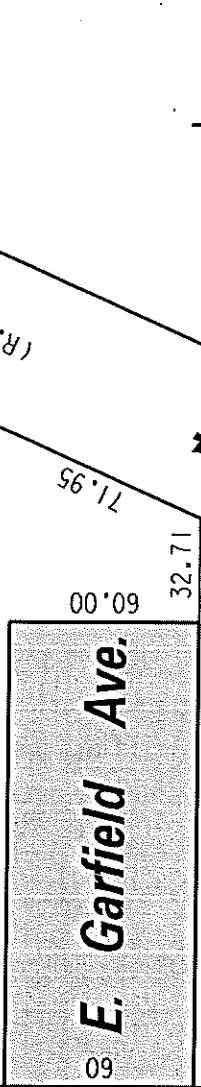
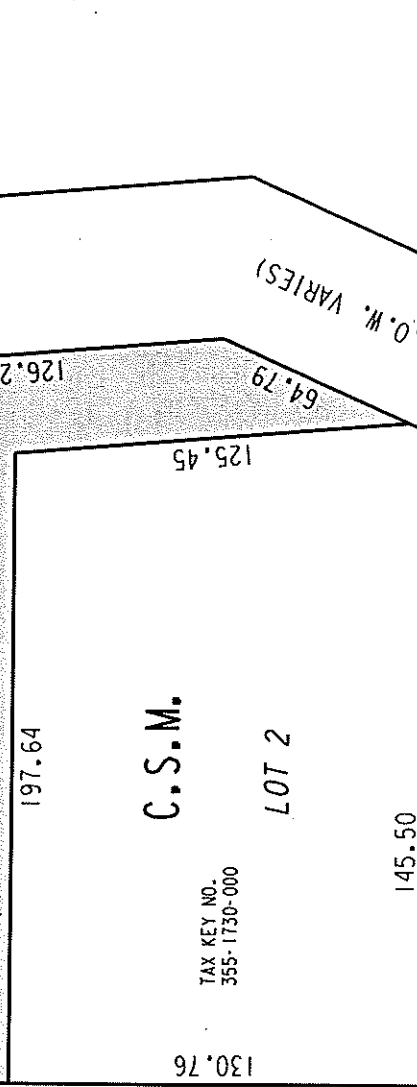
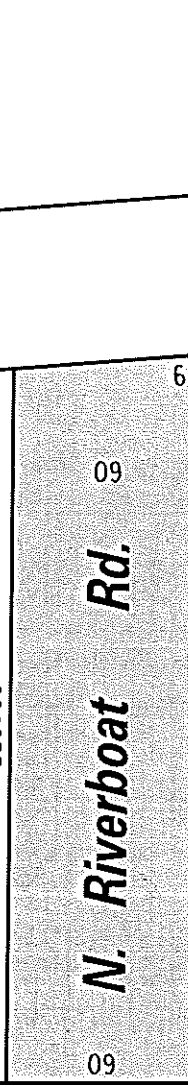
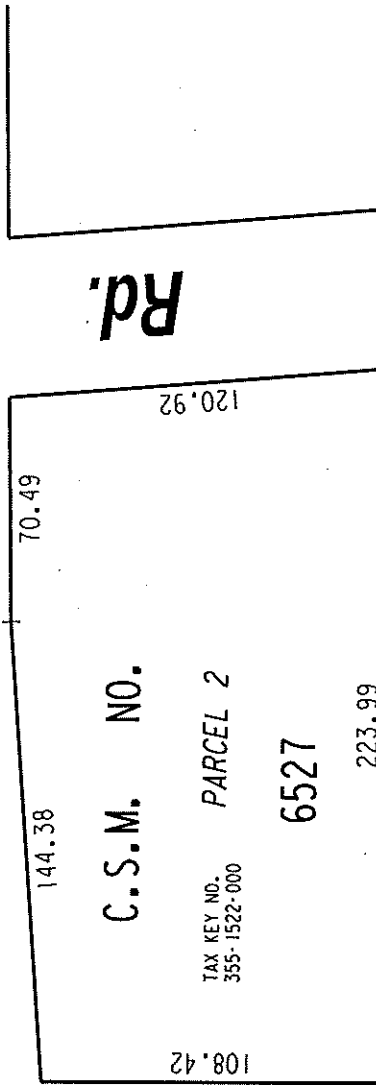
E. North

Ave.

37

37

BRIDGE DRIP LINE



RIVERCREST CONDOMINIUMS
 TAX KEY NO.'S
 355-1731-000 - 355-1770-000

PORTIONS OF PUBLIC
 STREETS PROPOSED
 TO BE VACATED

EXHIBIT "A"
 FILE NO. 131771

INFRASTRUCTURE SERVICES DIVISION

MILWAUKEE, WISCONSIN

ASSIGNED TO: W.E. FUCHS
 DRAWN BY: W.E.F.
 PROJECT/GRANT NO.: WK52337345
 APPROVED BY:
 CH'K'D. BY: W.E. FUCHS
 DATE: MAY 13, 2014
 SCALE: 1" = 60'

Maree Corneil
 CENTRAL DRAFTING & RECORDS MANAGER
 CIVIL ENGINEER

355

N.E. 1/4 SEC. 21, T.7N., R.22E.

E. North

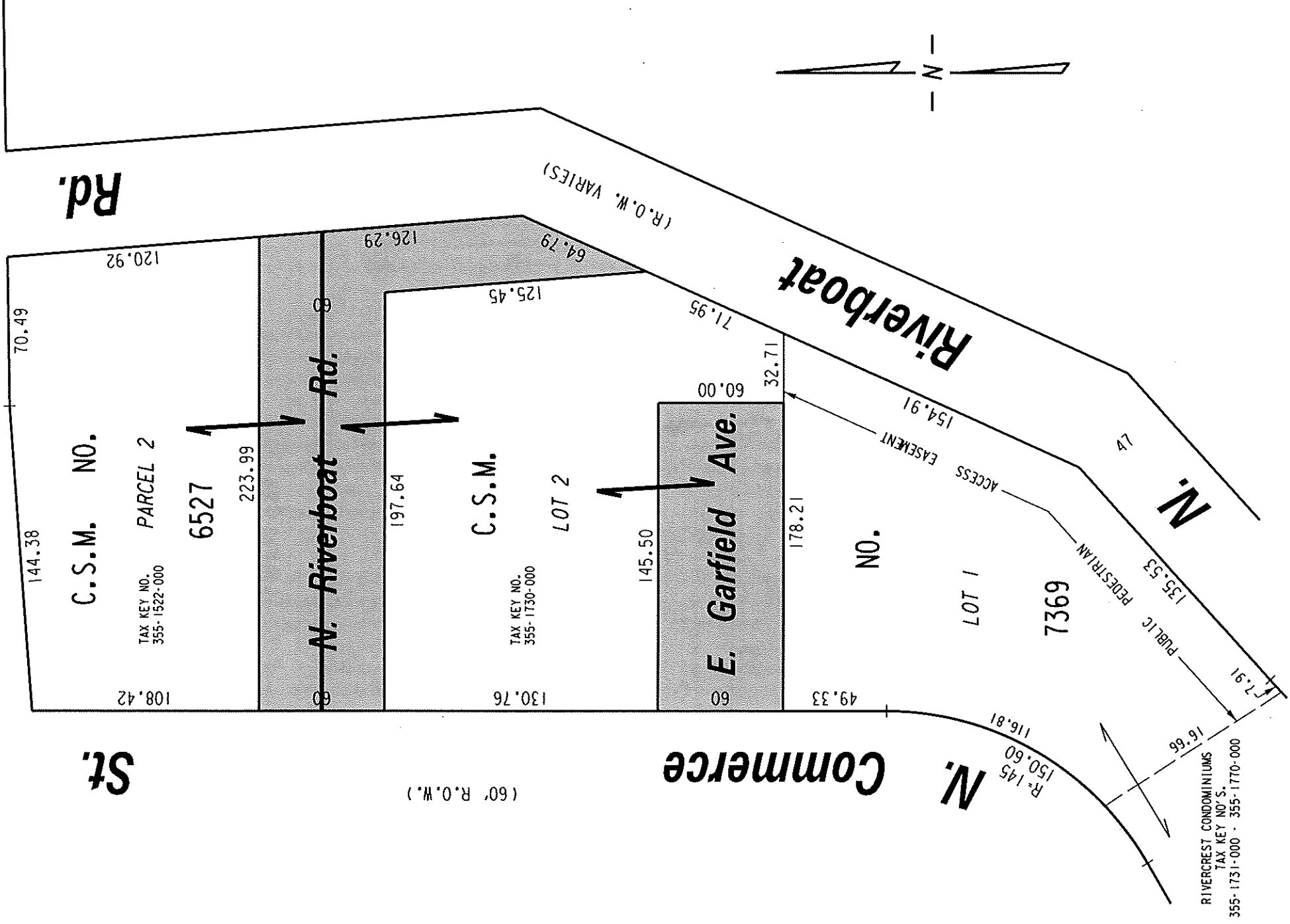
Ave.

SEC. LINE

37

37

BRIDGE DRIP LINE



 PORTIONS OF PUBLIC STREETS PROPOSED TO BE VACATED
 LAND REVERSION AFTER VACATION

FILE NO. 131771
INFRASTRUCTURE SERVICES DIVISION
 MILWAUKEE, WISCONSIN

ASSIGNED TO: W.E. FUCHS
 DRAWN BY: W.E.F.
 PROJECT/GRANT NO.: WK52337345
 CH'K'D. BY: W.E. FUCHS
 DATE: MAY 13, 2014
 SCALE: 1" = 60'