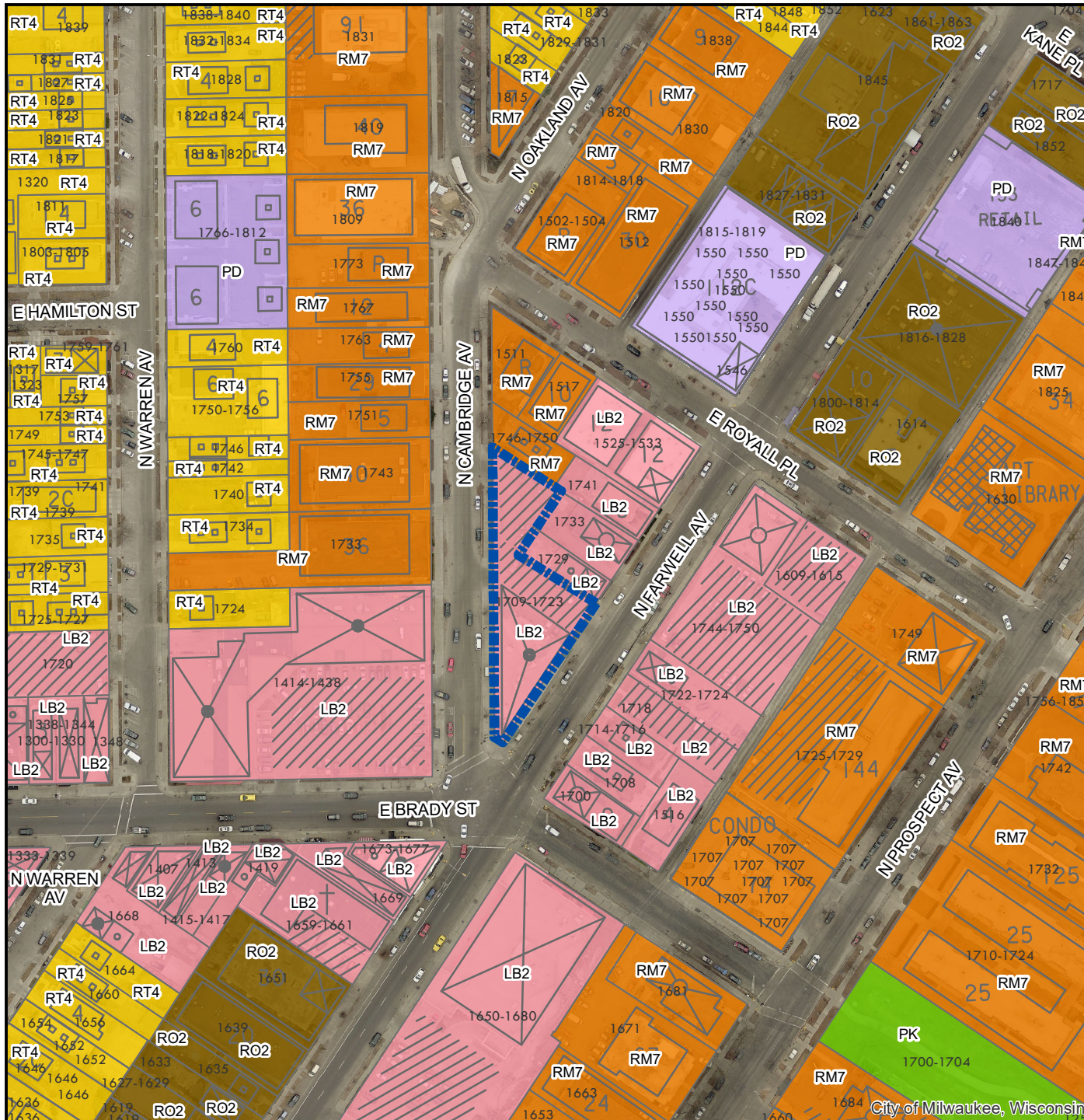


File No. 221449
Local Business (LB2) to
Detailed Planned Development (DPD)
1709-23 N. Farwell Av.



Legend



Subject Site

Zoning

Unknown or pending zone

Zoning Category

- Residential - single family
- Residential - two family
- Residential - multi-family
- Residential - residence and office
- Central business district - civic activity
- Central business district - high-density residential
- Central business district - major retail
- Central business district - mixed activity
- Central business district - neighborhood retail
- Central business district - office and service
- Central business district - residential and specialty use
- Central business district - warehousing and light manufacturing
- Commercial - neighborhood shopping
- Commercial - local business
- Commercial - commercial service
- Commercial - regional business
- Industrial - commercial
- Industrial - office
- Industrial - light
- Industrial - mixed
- Industrial - heavy
- Special - parks
- Special - institutional
- Special - planned development
- Special - redevelopment district



0 175 350 Feet

City of Milwaukee, Wisconsin