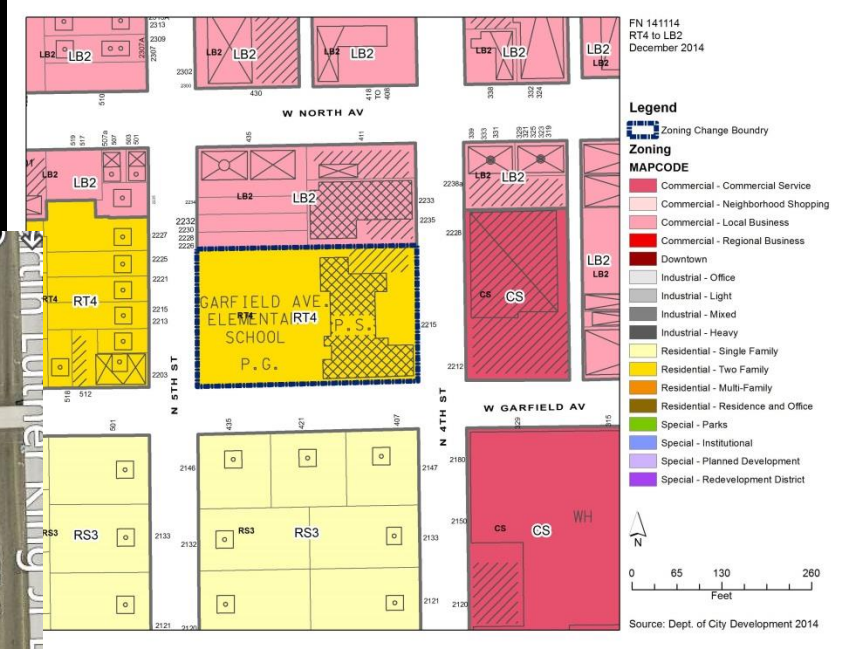
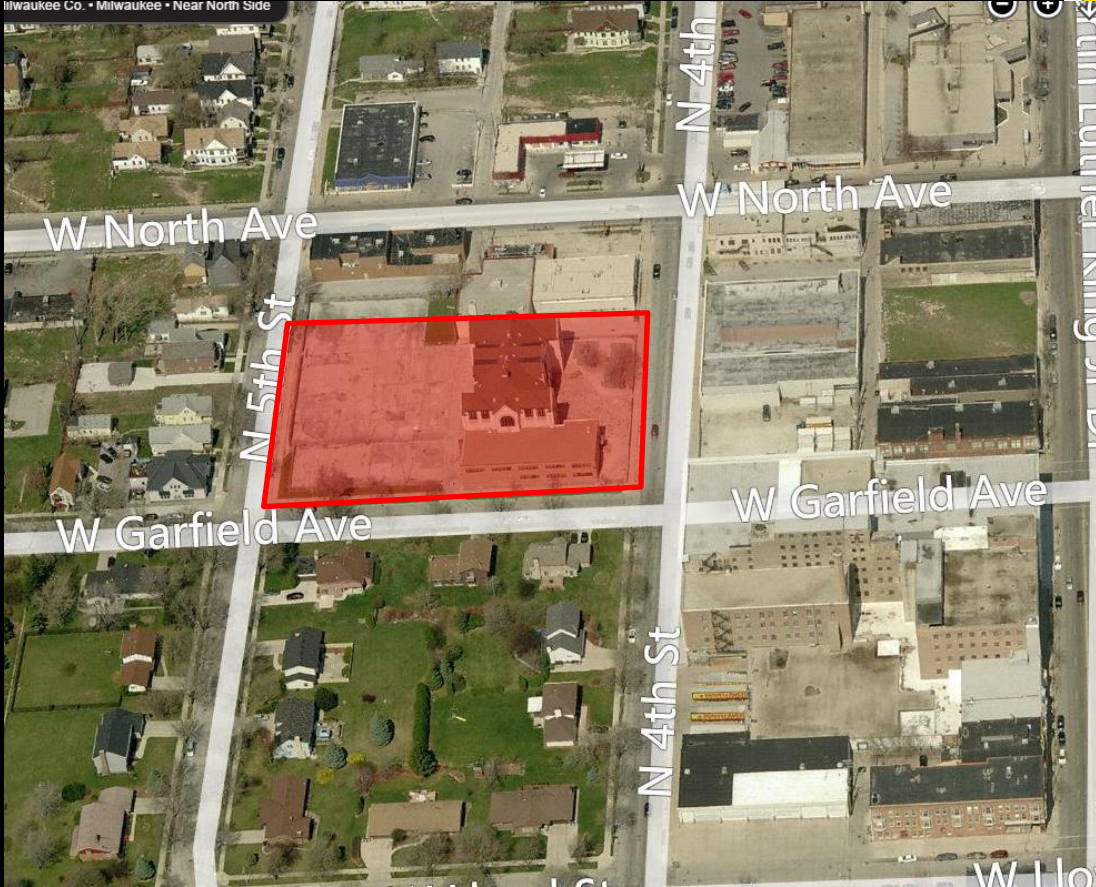
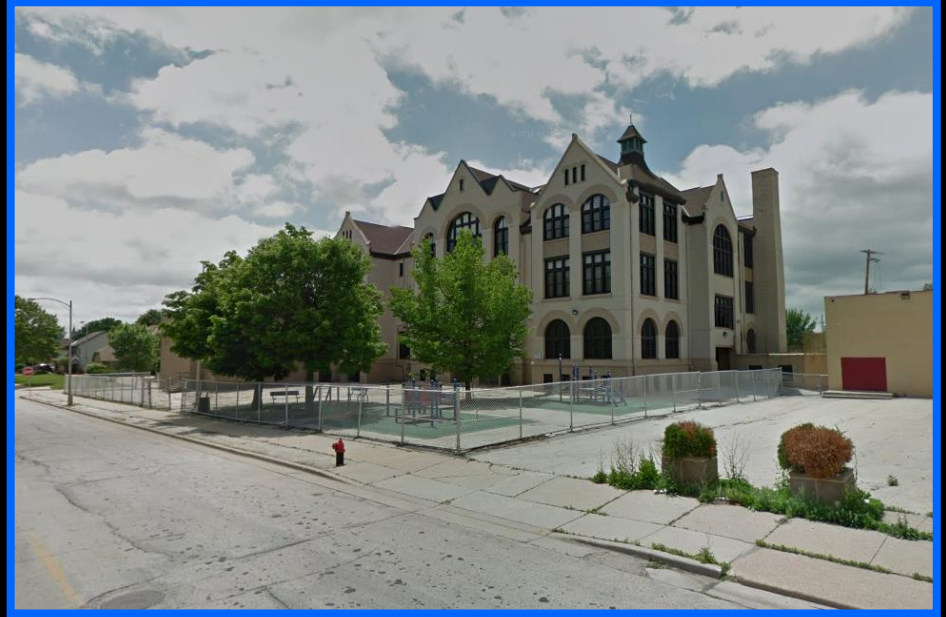
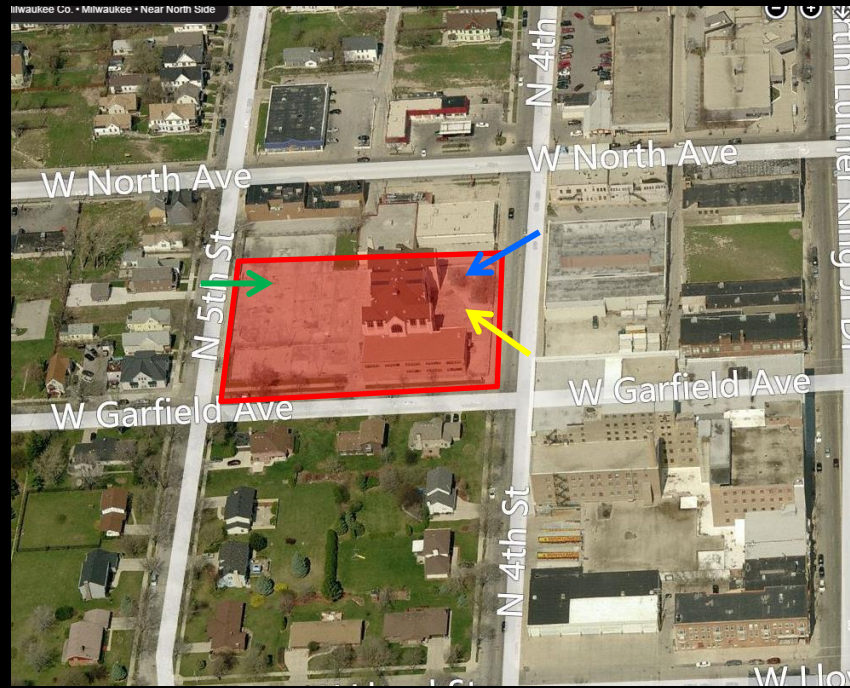


File No. 141114. An ordinance relating to the change in zoning from Two-Family Residential to Local Business for redevelopment of the former Garfield Avenue Elementary School located at 2215 North 4th Street, on the north side of West Garfield Avenue, west of North 4th Street, in the 6th Aldermanic District.

Milwaukee Co. • Milwaukee • Near North Side



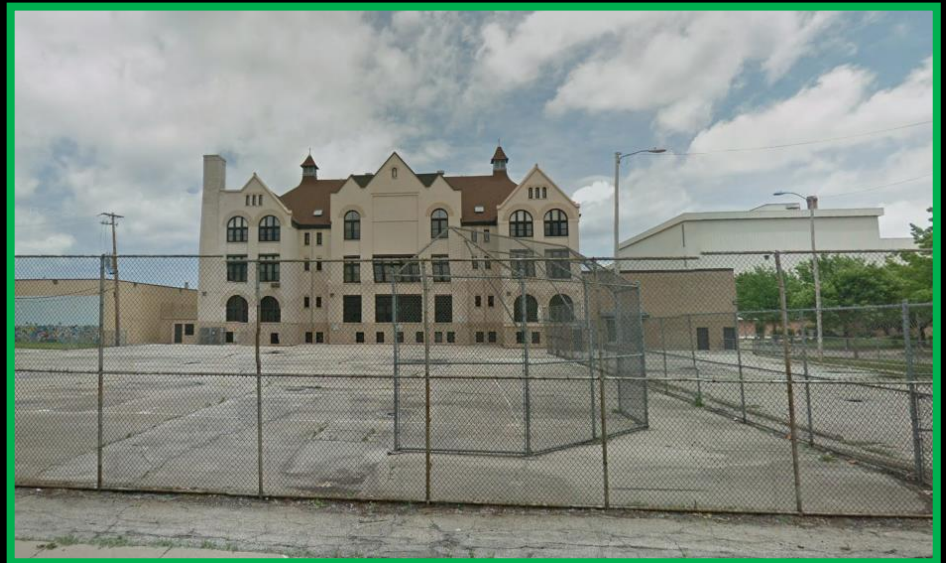
File No. 141114. Site Context Photos



View of Site from north end of North 4th Street



View of Site from south end of North 4th Street



View of Site from North 5th Street, looking east