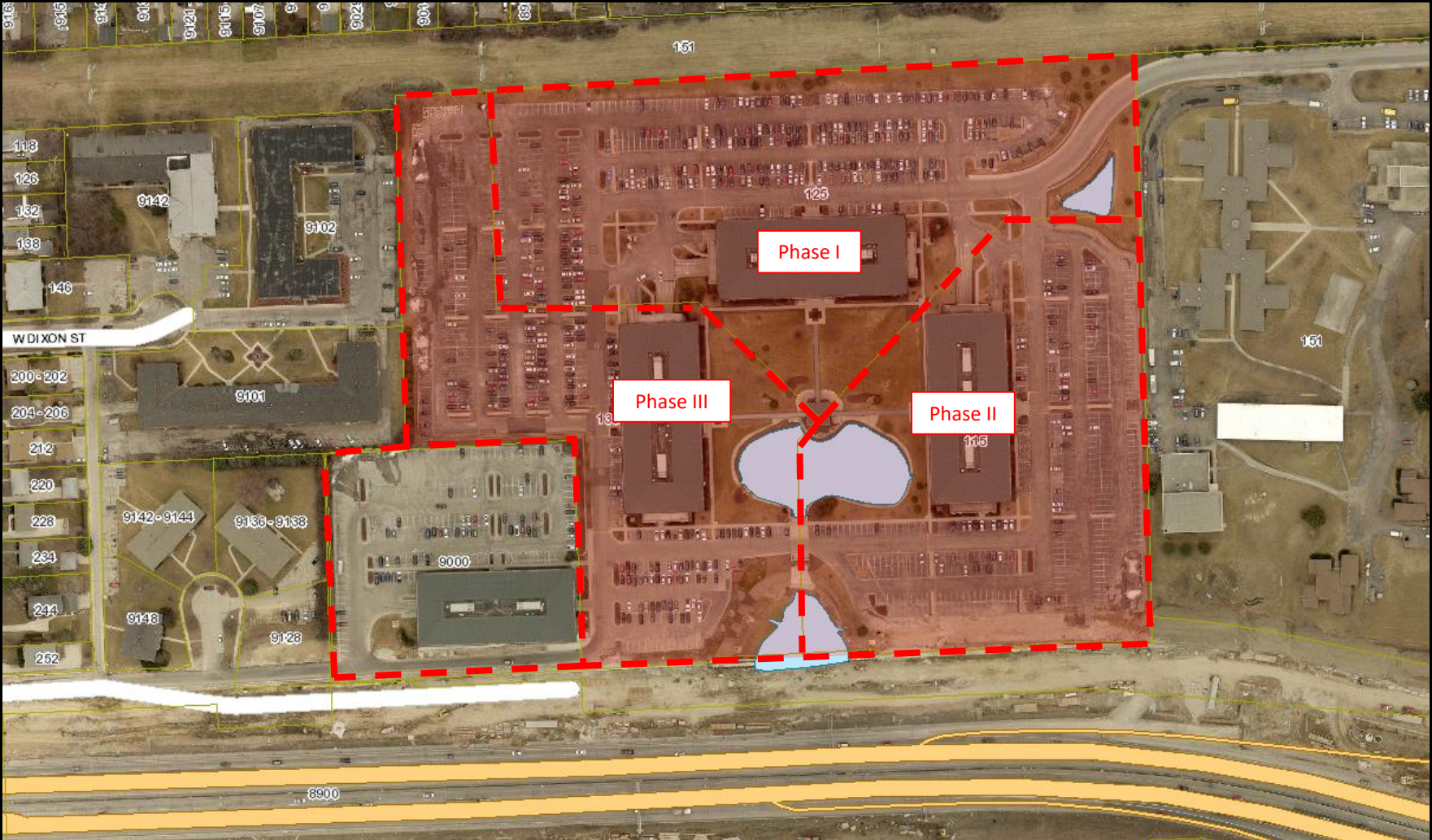


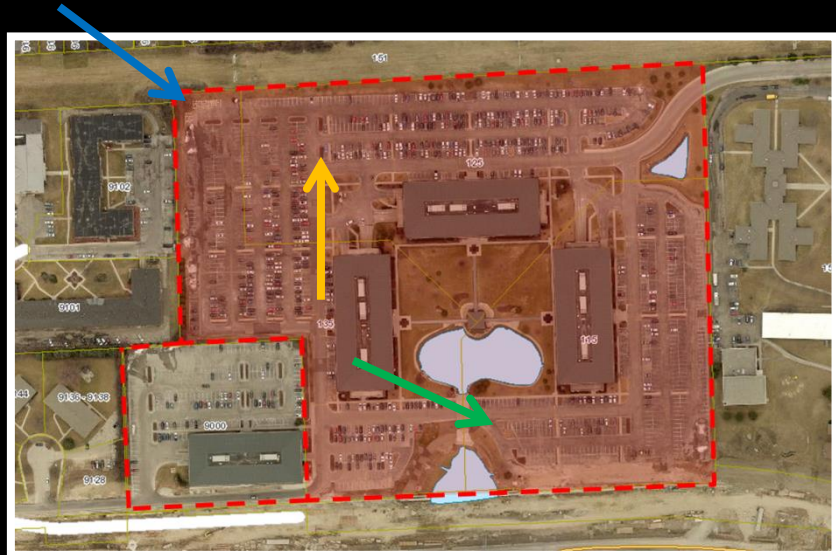
File No. 181018. Substitute resolution relating to a Minor Modification to the Detailed Planned Developments known as Honey Creek Corporate Center, Phases I, II and III to reduce the amount of surface parking and increase the landscaped open space at 115, 125 and 135 South 84th Street, located on the north side of Interstate 94, west of South 84th Street, in the 10th Aldermanic District.



File No. 181018. Site Context Photos.



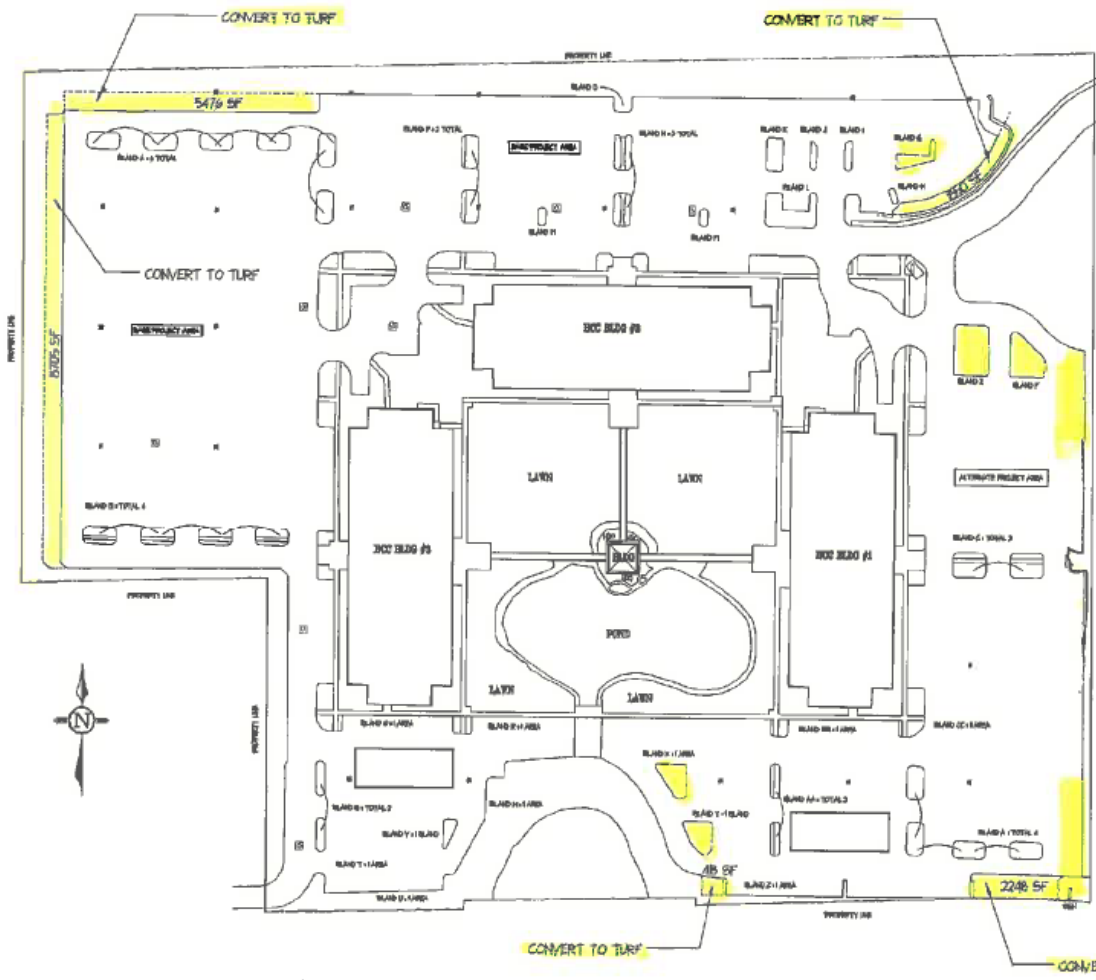
Aerial view looking south-east



View from south parking lot looking south-east



View from north parking lot looking north

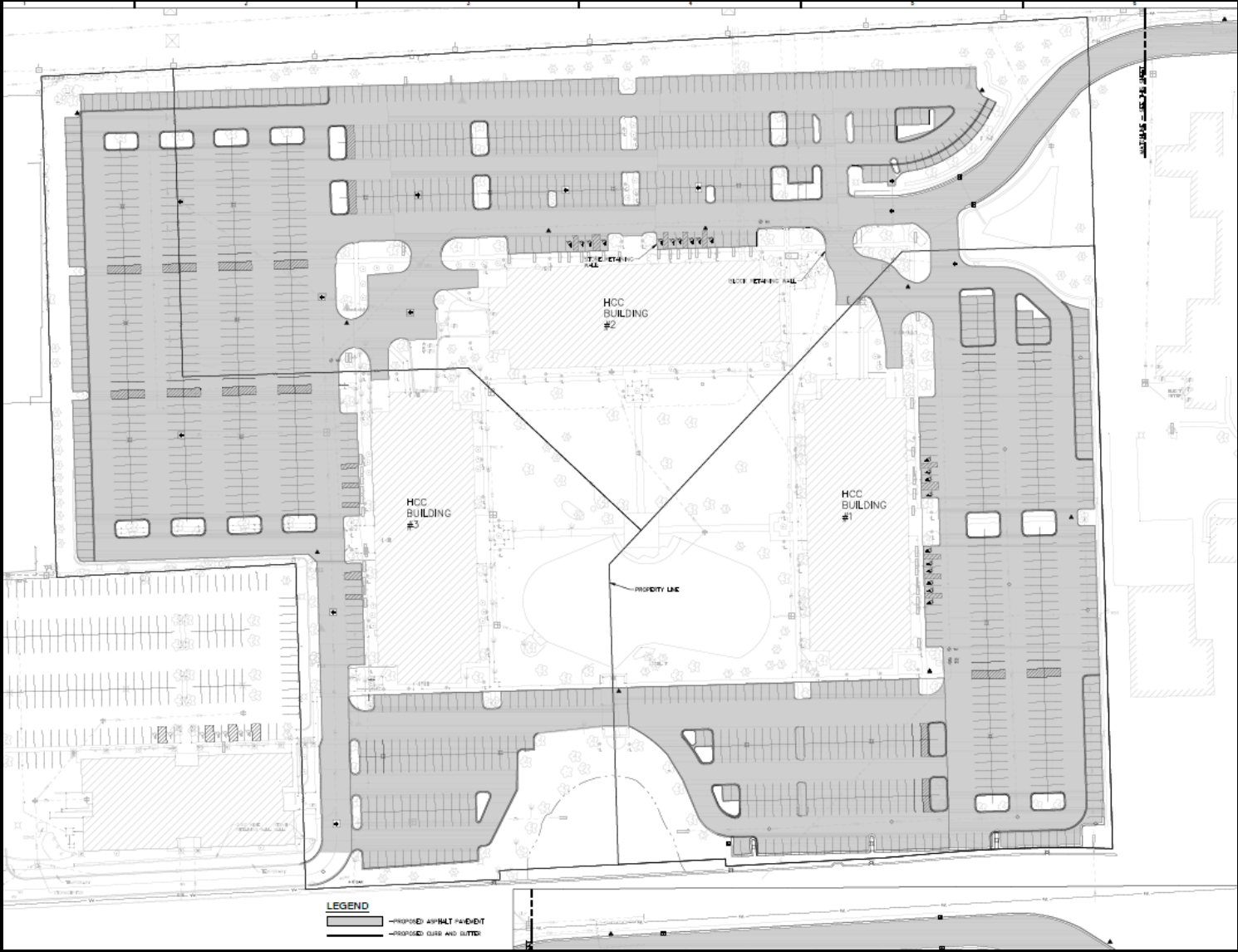


ADDED TURF FROM PREVIOUS PLAN = 18,697 SF

ADDED GREEN SPACE
(PLANTING) @ ISLANDS = 2,178 SF

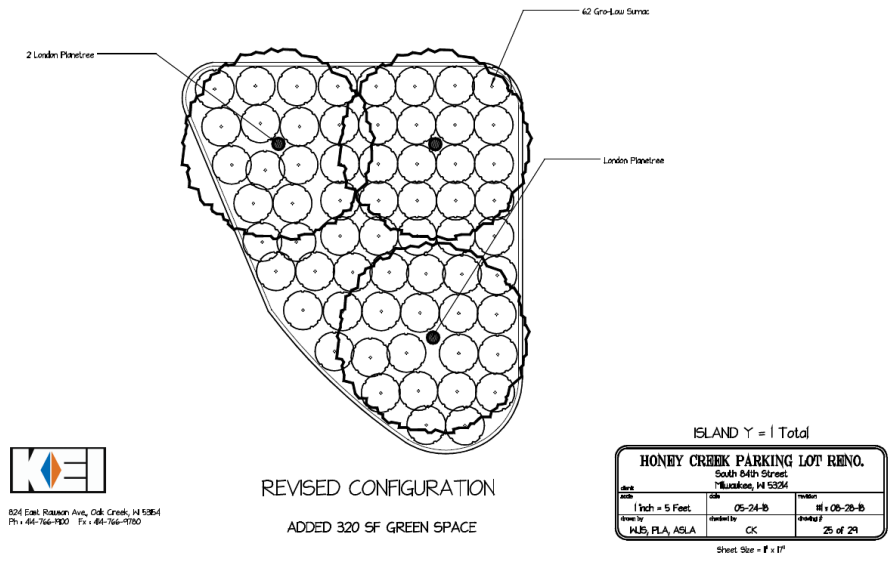
GRAND TOTAL TURF & GREEN SPACE ADDED = 20,875 SF



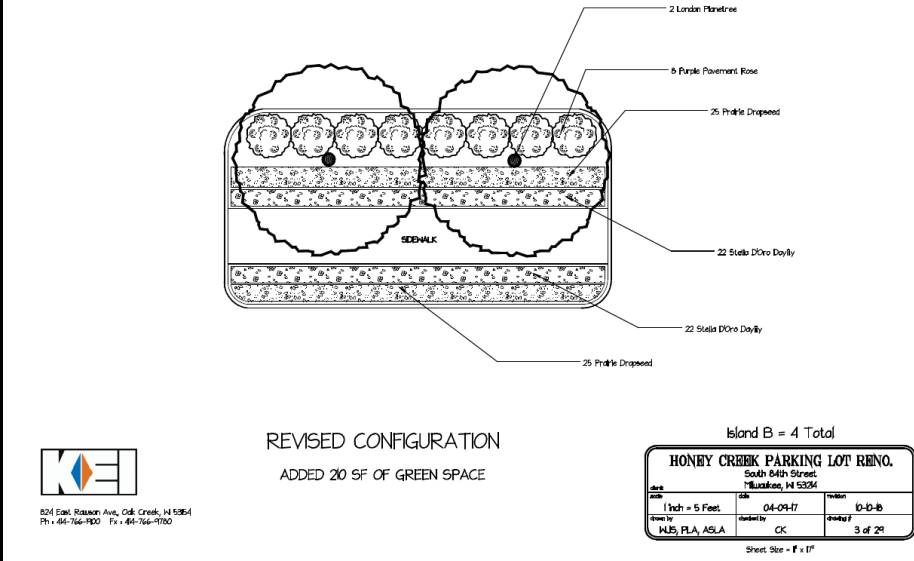


LEGEND
[Hatched Box] PROPOSED ASPHALT PAVEMENT
[Solid Box] PROPOSED CURB AND GUTTER

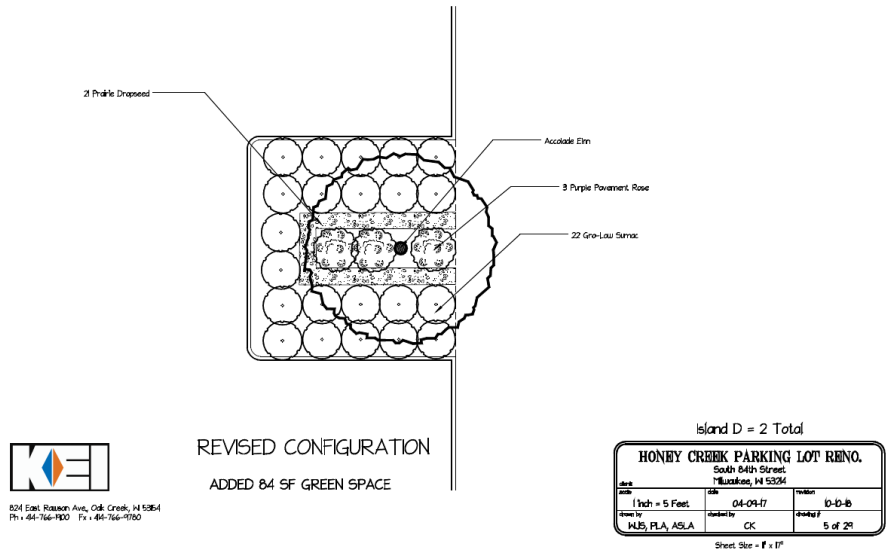
File No. 181018. Sample Island Landscaping



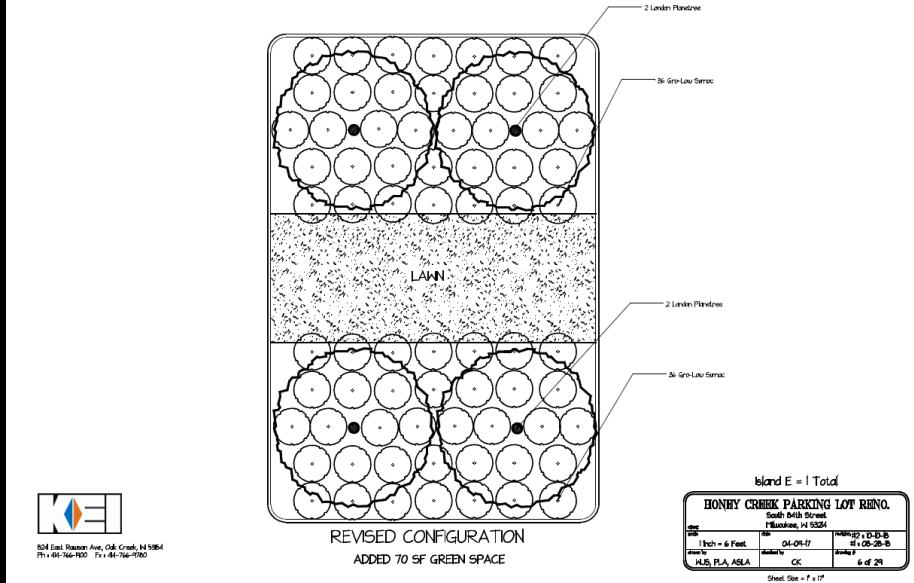
KEI
824 East Rauson Ave., Oak Creek, WI 53044
Ph: 442-766-1900 Fx: 442-766-1700



KEI
824 East Rauson Ave., Oak Creek, WI 53044
Ph: 442-766-1900 Fx: 442-766-1700



KEI
824 East Rauson Ave., Oak Creek, WI 53044
Ph: 442-766-1900 Fx: 442-766-1700



KEI
824 East Rauson Ave., Oak Creek, WI 53044
Ph: 442-766-1900 Fx: 442-766-1700