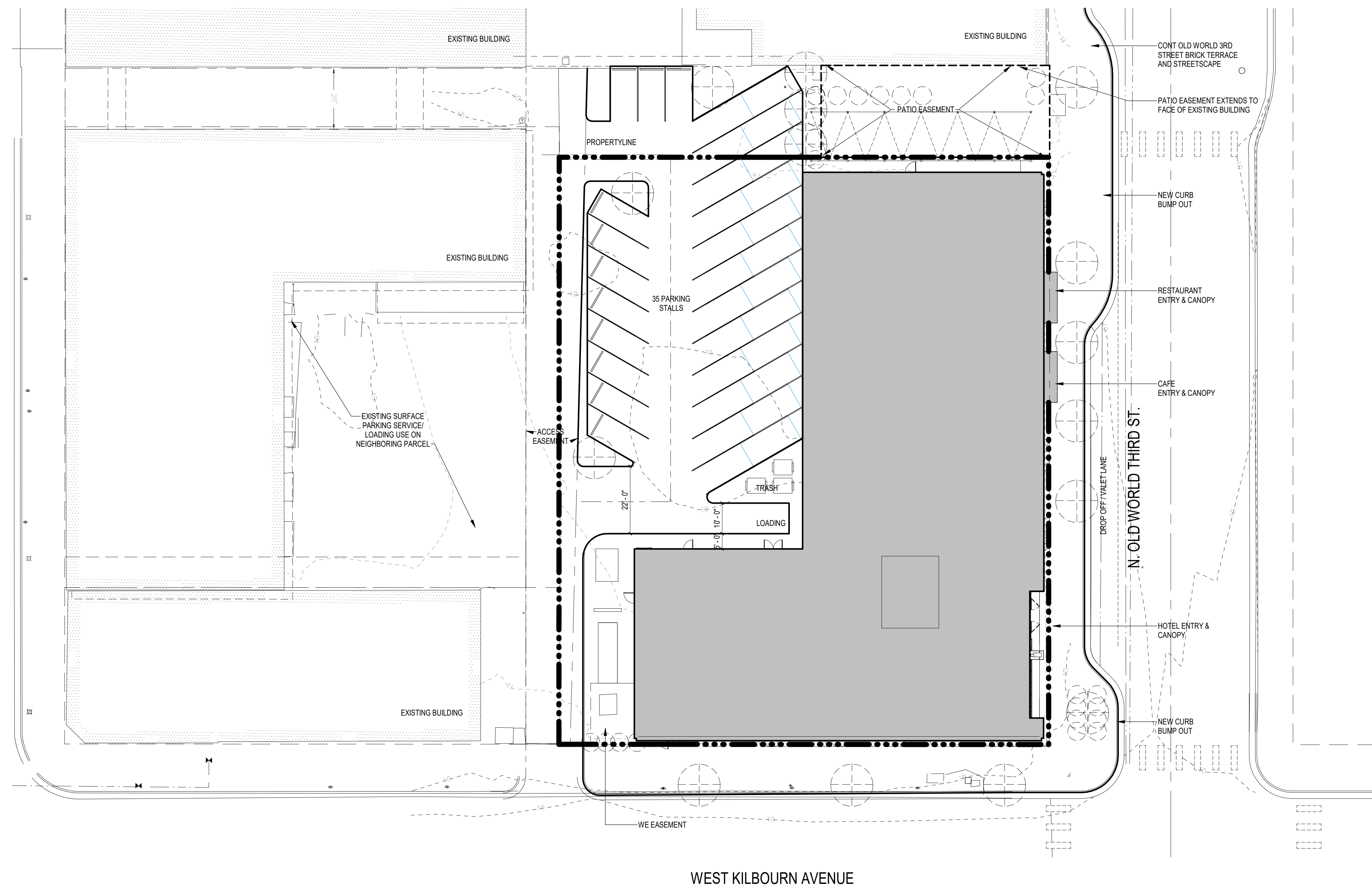


NOT FOR
CONSTRUCTION



Revisions

VE REDESIGN

SCOPE DOCUMENTS

Drawing Date
07/19/2024

MILWAUKEE HILTON
TEMPO

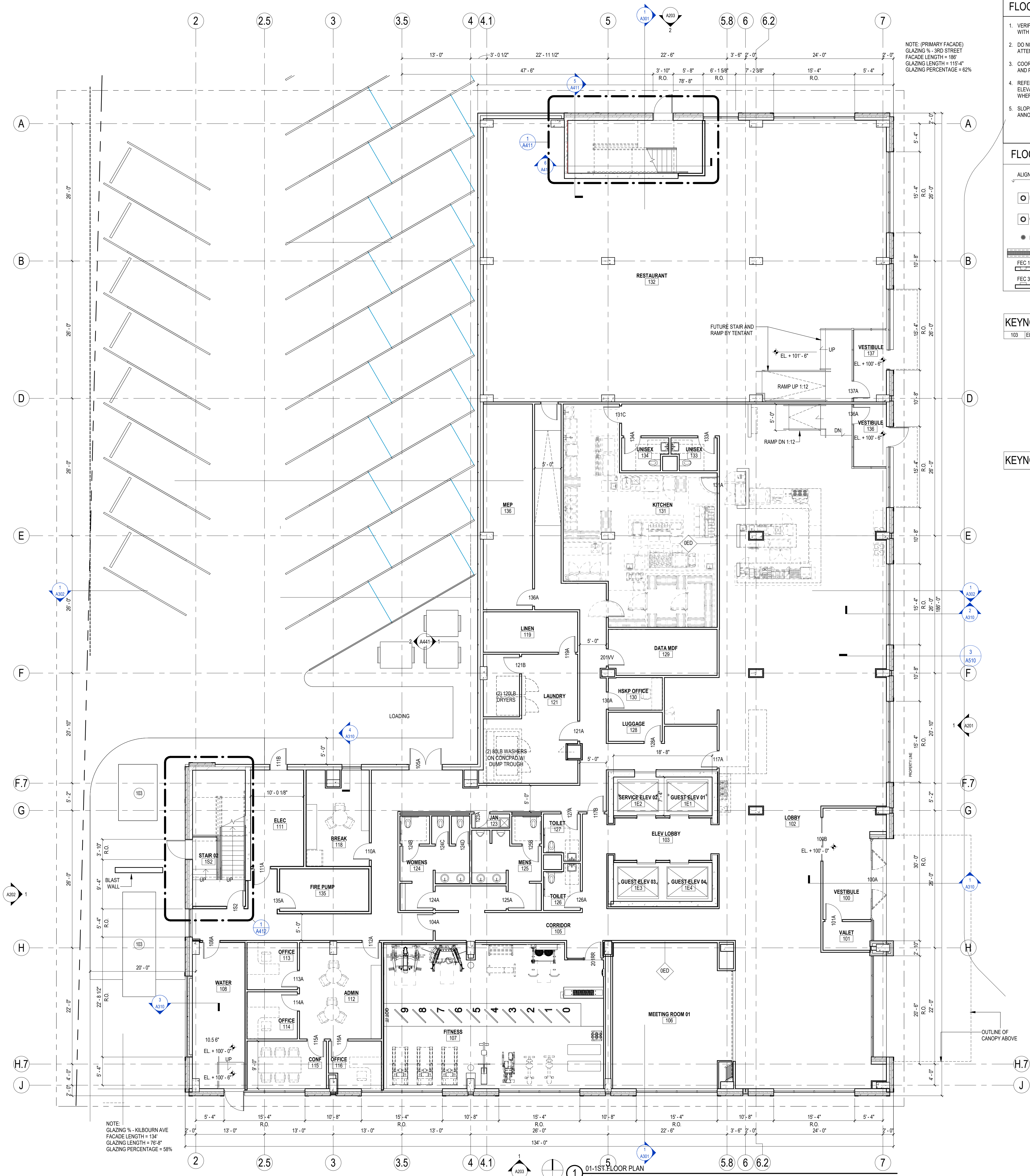
308 W. KILBOURN AVE
MILWAUKEE, WI 53203

Project No. HKS HOLDINGS
220094.00 000123

Sheet Title
SITE PLAN

Copyright © 2024 Kahler Slater, Inc. All rights reserved.
104 Shockey St., Richmond, Virginia 23219
Telephone 804.787.2500
111 West Wisconsin Avenue, Milwaukee, Wisconsin 53203
Telephone 414.272.2000 Fax 414.272.2001
722 Williamson Street, Madison, Wisconsin 53703
Telephone 608.263.6300 Fax 608.263.6317
125 South Clark Street, Suite 675-2, Chicago, Illinois 60603
Telephone 312.789.4516

Sheet No.
AS100



FLOOR PLAN GENERAL NOTES

1. VERIFY DIMENSIONS, CONDITIONS, AND FINISHES PRIOR TO PRICING OR PROCEEDING WITH WORK.
2. DO NOT SCALE FROM DRAWINGS. BRING ANY DISCREPANCIES TO ARCHITECT'S ATTENTION IMMEDIATELY.
3. COORDINATE LOCATIONS AND QUANTITY OF WORK WITH MECHANICAL, ELECTRICAL AND PLUMBING CONTRACTORS.
4. REFER TO PARTITION SCHEDULE ON G660 FOR TYPICAL PARTITION TYPES. STAIRS, ELEVATORS, MECHANICAL AND OTHER SHAFT WALLS TO HAVE A 2-HOUR FIRE RATING WHERE INDICATED. TYPICAL PARTITION WALLS TO BE 000 U.I.O.
5. SLOPE ALL ROOF INSULATION 1/4" PER 1'-0" TOWARDS ROOF DRAINS PER PLAN ANNOTATIONS. MAINTAIN MINIMUM 5" INSULATION.

FLOOR PLAN LEGEND

- ALIGN → ALIGN FACE OF INDICATED ELEMENTS
- RD ROOF DRAIN
- OD OVERFLOW ROOF DRAIN
- FD FLOOR DRAIN
- TD TRENCH DRAIN
- FEC-1 RECESSED FIRE EXTINGUISHER CABINET
- FEC-2 RECESSED FIRE EXTINGUISHER CABINET
- FEC-3 SURFACE MOUNTED FIRE EXTINGUISHER CABINET

KEYNOTES - FLOOR PLAN

- 103 ELECTRICAL EQUIPMENT. SEE UTILITY PLANS

KEYNOTES - ASSEMBLIES & COMPONENTS

NOT FOR CONSTRUCTION

Revisions

VE REDESIGN

SCOPE DOCUMENTS

Drawing Date
07/19/2024

MILWAUKEE HILTON
TEMPO

308 W. KILBOURN AVE
MILWAUKEE, WI 53203

Project No. HKS HOLDINGS
220094.00 000123

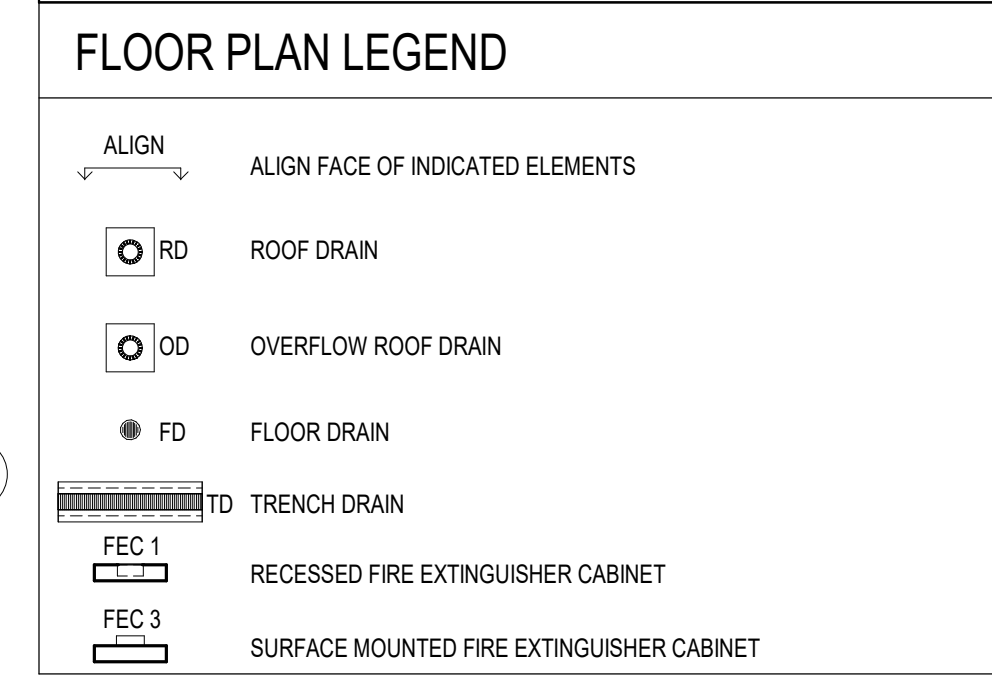
Sheet Title
1ST FLOOR PLAN

Copyright © 2024 Kahler Slater, Inc. All rights reserved.
104 Shookoe Stg, Richmond, Virginia 23219
Telephone 804.787.2500
111 West Wisconsin Avenue, Milwaukee, Wisconsin 53203
Telephone 414.272.2000 Fax 414.272.2001
722 Williamson Street, Madison, Wisconsin 53703
Telephone 608.263.8300 Fax 608.263.8317
125 South Clark Street, Suite 675-2, Chicago, Illinois 60603
Telephone 312.789.4516

Sheet No.
A101



- ### FLOOR PLAN GENERAL NOTES
1. VERIFY DIMENSIONS, CONDITIONS, AND FINISHES PRIOR TO PRICING OR PROCEEDING WITH WORK.
 2. DO NOT SCALE FROM DRAWINGS. BRING ANY DISCREPANCIES TO ARCHITECT'S ATTENTION IMMEDIATELY.
 3. COORDINATE LOCATIONS AND QUANTITY OF WORK WITH MECHANICAL, ELECTRICAL AND PLUMBING CONTRACTORS.
 4. REFER TO PARTITION SCHEDULE ON G660 FOR TYPICAL PARTITION TYPES. STAIRS, ELEVATORS, MECHANICAL AND OTHER SHAFT WALLS TO HAVE A 2-HOUR FIRE RATING WHERE INDICATED. TYPICAL PARTITION WALLS TO BE 100 U.I.N.O.
 5. SLOPE ALL ROOF INSULATION 1/4" PER 1'-0" TOWARDS ROOF DRAINS PER PLAN ANNOTATIONS. MAINTAIN MINIMUM 5" INSULATION.



KEYNOTES - FLOOR PLAN

KEYNOTES - ASSEMBLIES & COMPONENTS

GUESTROOM MATRIX - TOTAL MIX

Level	TYPE	QTY
2ND FLOOR	DQ	13
	DQ - ADA	1
	KING	16
	KING - ADA	1
	KING - WELLNESS	2
		33
3RD FLOOR	DQ	13
	DQ - ADA	1
	KING	16
	KING - ADA	1
	KING - WELLNESS	2
		33
4TH FLOOR	DQ	13
	DQ - ADA	1
	KING	16
	KING - ADA	1
	KING - WELLNESS	2
		33
5TH FLOOR	DQ	13
	DQ - ADA	1
	KING	16
	KING - ADA	1
	KING - WELLNESS	2
		33
6TH FLOOR	DQ	10
	DQ - ADA	1
	KING	13
	KING - ADA	2
	KING - WELLNESS	26
		158
TOTAL:		158

NOT FOR CONSTRUCTION

Revisions

VE REDESIGN

SCOPE DOCUMENTS

Drawing Date
07/19/2024

MILWAUKEE HILTON
TEMPO

308 W. KILBOURN AVE
MILWAUKEE, WI 53203

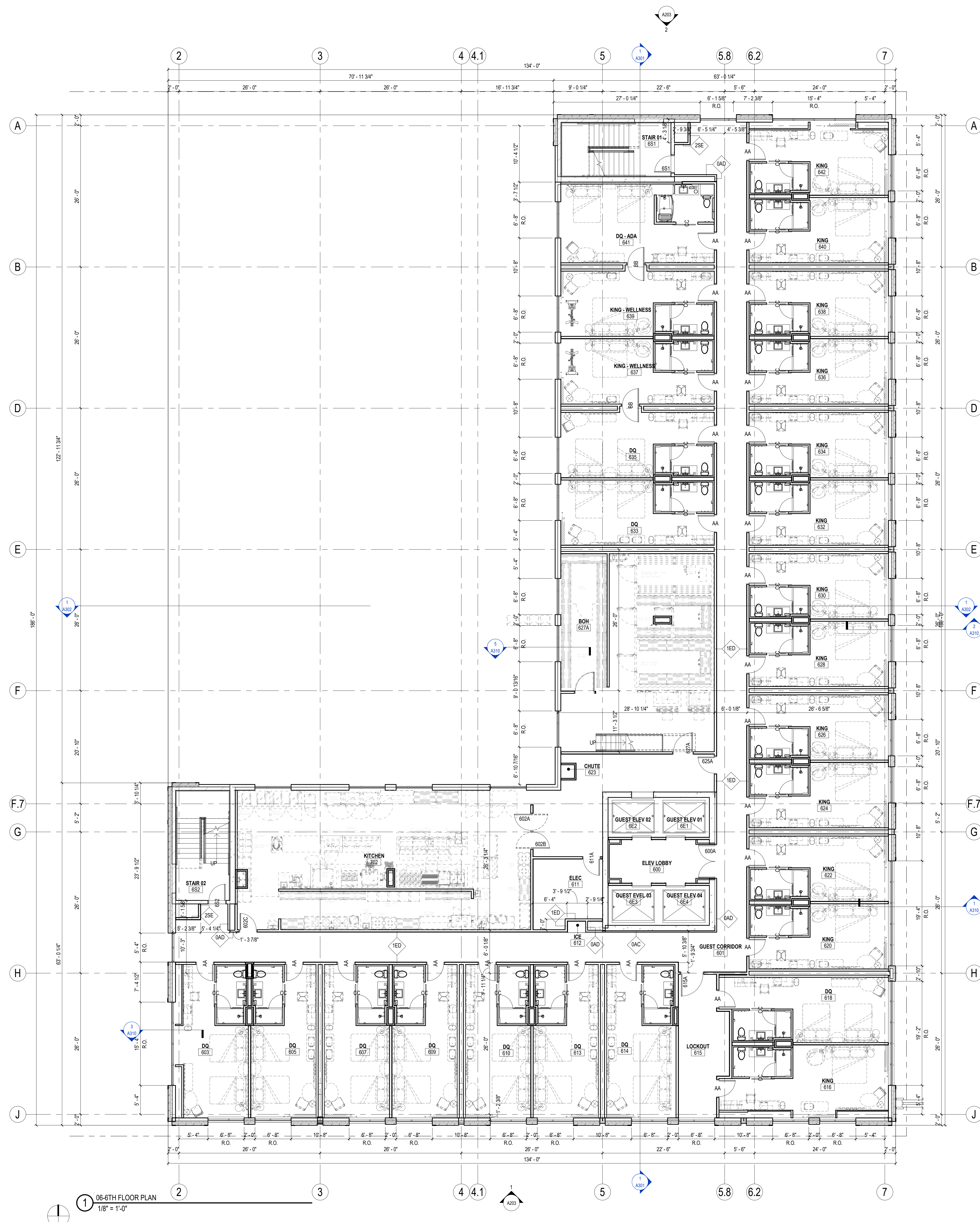
Project No. HKS HOLDINGS
220094.00 000123

Sheet Title
2ND-5TH FLOOR PLAN

Copyright © 2024 Kahler Slater, Inc. All rights reserved.
104 Shockoe Slip, Richmond, Virginia 23219
Telephone 804.797.2500
111 West Wisconsin Avenue, Milwaukee, Wisconsin 53203
Telephone 414.272.2000 Fax 414.272.2001
722 Williamson Street, Madison, Wisconsin 53703
Telephone 608.263.6300 Fax 608.263.6317
125 South Clark Street, Suite 675-2, Chicago, Illinois 60603
Telephone 312.789.4516

Sheet No.
A102

02-2ND FLOOR PLAN
1/8" = 1'-0"



FLOOR PLAN GENERAL NOTES

1. VERIFY DIMENSIONS, CONDITIONS, AND FINISHES PRIOR TO PRICING OR PROCEEDING WITH WORK.
2. DO NOT SCALE FROM DRAWINGS. BRING ANY DISCREPANCIES TO ARCHITECT'S ATTENTION IMMEDIATELY.
3. COORDINATE LOCATIONS AND QUANTITY OF WORK WITH MECHANICAL, ELECTRICAL AND PLUMBING CONTRACTORS.
4. REFER TO PARTITION SCHEDULE ON G660 FOR TYPICAL PARTITION TYPES. STAIRS, ELEVATORS, MECHANICAL AND OTHER SHAFT WALLS TO HAVE A 2-HOUR FIRE RATING WHERE INDICATED. TYPICAL PARTITION WALLS TO BE 0DD U.N.G.
5. SLOPE ALL ROOF INSULATION 1/4" PER 1'-0" TOWARDS ROOF DRAINS PER PLAN ANNOTATIONS. MAINTAIN MINIMUM 5" INSULATION.

FLOOR PLAN LEGEND

- ALIGN → ALIGN FACE OF INDICATED ELEMENTS
- RD ROOF DRAIN
- OD OVERFLOW ROOF DRAIN
- FD FLOOR DRAIN
- TD TRENCH DRAIN
- FEC 1 RECESSED FIRE EXTINGUISHER CABINET
- FEC 2 RECESSED FIRE EXTINGUISHER CABINET
- FEC 3 SURFACE MOUNTED FIRE EXTINGUISHER CABINET

KEYNOTES - FLOOR PLAN

KEYNOTES - ASSEMBLIES & COMPONENTS

GUESTROOM MATRIX - TOTAL MIX

Level	TYPE	QTY
2ND FLOOR	DQ	13
2ND FLOOR	DQ - ADA	1
2ND FLOOR	KING	16
2ND FLOOR	KING - ADA	1
2ND FLOOR	KING - WELLNESS	2
TOTAL		33
3RD FLOOR	DQ	13
3RD FLOOR	DQ - ADA	1
3RD FLOOR	KING	16
3RD FLOOR	KING - ADA	1
3RD FLOOR	KING - WELLNESS	2
TOTAL		33
4TH FLOOR	DQ	13
4TH FLOOR	DQ - ADA	1
4TH FLOOR	KING	16
4TH FLOOR	KING - ADA	1
4TH FLOOR	KING - WELLNESS	2
TOTAL		33
5TH FLOOR	DQ	13
5TH FLOOR	DQ - ADA	1
5TH FLOOR	KING	16
5TH FLOOR	KING - ADA	1
5TH FLOOR	KING - WELLNESS	2
TOTAL		33
6TH FLOOR	DQ	10
6TH FLOOR	DQ - ADA	1
6TH FLOOR	KING	13
6TH FLOOR	KING - WELLNESS	2
TOTAL		26
TOTAL: 158		158

NOT FOR CONSTRUCTION

Revisions

VE REDESIGN

SCOPE DOCUMENTS

Drawing Date
07/19/2024

MILWAUKEE HILTON
TEMPO

308 W. KILBOURN AVE
MILWAUKEE, WI 53203

Project No. HKS HOLDINGS
220094.00 000123

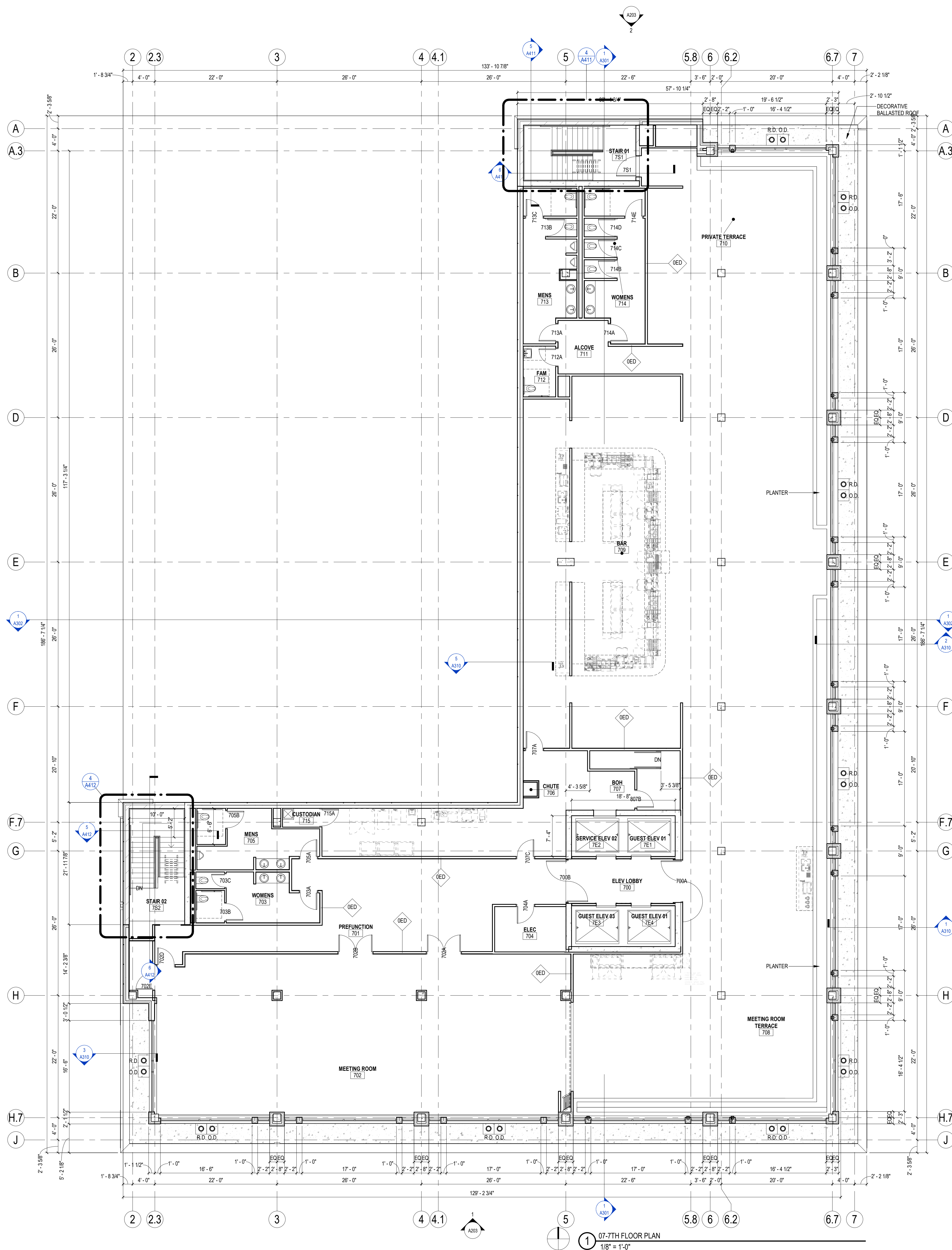
Sheet Title
6TH FLOOR PLAN

Copyright © 2024 Kahler Slater, Inc. All rights reserved.
104 Shockoe Slip, Richmond, Virginia 23219
Telephone 804.787.2500
111 West Wisconsin Avenue, Milwaukee, Wisconsin 53203
Telephone 414.272.2000 Fax 414.272.2001
722 Williamson Street, Madison, Wisconsin 53703
Telephone 608.263.8300 Fax 608.263.8317
125 South Clark Street, Suite 675-2, Chicago, Illinois 60603
Telephone 312.789.4516

Sheet No.
A106

1 06-6TH FLOOR PLAN
1/8" = 1'-0"

7/19/2024 11:02:57 PM



FLOOR PLAN GENERAL NOTES

1. VERIFY DIMENSIONS, CONDITIONS, AND FINISHES PRIOR TO PRICING OR PROCEEDING WITH WORK.
2. DO NOT SCALE FROM DRAWINGS. BRING ANY DISCREPANCIES TO ARCHITECT'S ATTENTION IMMEDIATELY.
3. COORDINATE LOCATIONS AND QUANTITY OF WORK WITH MECHANICAL, ELECTRICAL AND PLUMBING CONTRACTORS.
4. REFER TO PARTITION SCHEDULE ON G660 FOR TYPICAL PARTITION TYPES. STAIRS, ELEVATORS, MECHANICAL AND OTHER SHAFT WALLS TO HAVE A 2-HOUR FIRE RATING WHERE INDICATED. TYPICAL PARTITION WALLS TO BE 0DD U.N.O.
5. SLOPE ALL ROOF INSULATION 1/4" PER 1'-0" TOWARDS ROOF DRAINS PER PLAN ANNOTATIONS. MAINTAIN MINIMUM 5" INSULATION.

FLOOR PLAN LEGEND

- ALIGN → ALIGN FACE OF INDICATED ELEMENTS
- RD ROOF DRAIN
- OD OVERFLOW ROOF DRAIN
- FD FLOOR DRAIN
- ▬ TD TRENCH DRAIN
- ▭ FEC 1 RECESSED FIRE EXTINGUISHER CABINET
- ▭ FEC 2 RECESSED FIRE EXTINGUISHER CABINET
- ▭ FEC 3 SURFACE MOUNTED FIRE EXTINGUISHER CABINET

KEYNOTES - FLOOR PLAN

KEYNOTES - ASSEMBLIES & COMPONENTS

NOT FOR CONSTRUCTION

Revisions

VE REDESIGN

SCOPE DOCUMENTS

Drawing Date
07/19/2024

MILWAUKEE HILTON
TEMPO

308 W. KILBOURN AVE
MILWAUKEE, WI 53203

Project No. HKS HOLDINGS
220094.00 000123

Sheet Title
7TH FLOOR PLAN

Copyright © 2024 Kahler Slater, Inc. All rights reserved.
104 Shocksie Slg, Richmond, Virginia 23219
Telephone 804.787.2500
111 West Wisconsin Avenue, Milwaukee, Wisconsin 53203
Telephone 414.272.2000 Fax 414.272.2001
722 Williamson Street, Madison, Wisconsin 53703
Telephone 608.263.6300 Fax 608.263.6317
125 South Clark Street, Suite 675-2, Chicago, Illinois 60603
Telephone 312.789.4516

Sheet No.
A107

07-7TH FLOOR PLAN
1/8" = 1'-0"

KEYNOTES - ASSEMBLIES & COMPONENTS	
BRICK 01	UNIT MASONRY - FACE BRICK
BRICK 02	DOUBLE SOLDIER COURSE
BRICK 03	STACKED BOND PATTERN
CANOPY 01	CHARCOAL GREY ALUMINUM METAL CANOPY, FINISH TO MATCH METAL PANEL 01
COPING 01	PREFINISHED METAL PANEL, FINISH TO MATCH METAL PANEL 01
GA 01	4 1/2" STOREFRONT WINDOW SYSTEM, BASIS OF DESIGN KAWNEER 451, SEE ASSEMBLIES SHEET A500 FOR ADDITIONAL INFORMATION.
GA 02	6" STOREFRONT WINDOW SYSTEM, BASIS OF DESIGN KAWNEER 601, SEE ASSEMBLIES SHEET A500 FOR ADDITIONAL INFORMATION.
GA 03	OPERABLE GLASS GULLOTINE GLAZING SYSTEM, BASIS OF DESIGN OPENAIRE SEE ASSEMBLIES SHEET A500 FOR ADDITIONAL INFORMATION.
GA 04	UNIT WINDOW
GL 01	VISION GLASS
METAL PANEL 01	CHARCOAL GREY ALUMINUM METAL PANEL
STONE 01	GRANITE STONE BASE

EXTERIOR ELEVATION GENERAL NOTES

1. ALL METAL SURFACES EXPOSED TO VIEW (INCLUDING MISCELLANEOUS METALS, PIPING, MECHANICAL EQUIPMENT, LADDERS, STAIRS, RAILING, COLUMNS, PLATFORMS, ETC.) SHALL BE PAINTED, U.N.O.
2. WINDOWS ARE ALUMINUM STOREFRONT U.N.O.
3. CONTROL JOINTS IN CMU BACKUP TO BE OFFSET FROM CONTROL JOINTS IN MASONRY/STONE VENEER. CONTROL JOINTS AT CMU BACKUP MAXIMUM 28" SPACING.
4. PROVIDE CONTROL JOINTS AT INSIDE CORNERS OF BRICK AND STONE.

NOT FOR CONSTRUCTION



Revisions

VE REDESIGN

SCOPE DOCUMENTS

Drawing Date
07/19/2024

MILWAUKEE HILTON TEMPO

308 W. KILBOURN AVE
MILWAUKEE, WI 53203

Project No. HKS HOLDINGS
220094.00 000123

Sheet Title
EXTERIOR ELEVATIONS

Copyright © 2024 Kahler Slater, Inc. All rights reserved.
104 Shocksie Slip, Richmond, Virginia 23219
Telephone 804.787.2500
111 West Wisconsin Avenue, Milwaukee, Wisconsin 53203
Telephone 414.272.2000 Fax 414.272.2001
722 Williamson Street, Madison, Wisconsin 53703
Telephone 608.263.8300 Fax 608.263.6317
125 South Clark Street, Suite 675-2, Chicago, Illinois 60603
Telephone 312.789.4516

Sheet No.
A201

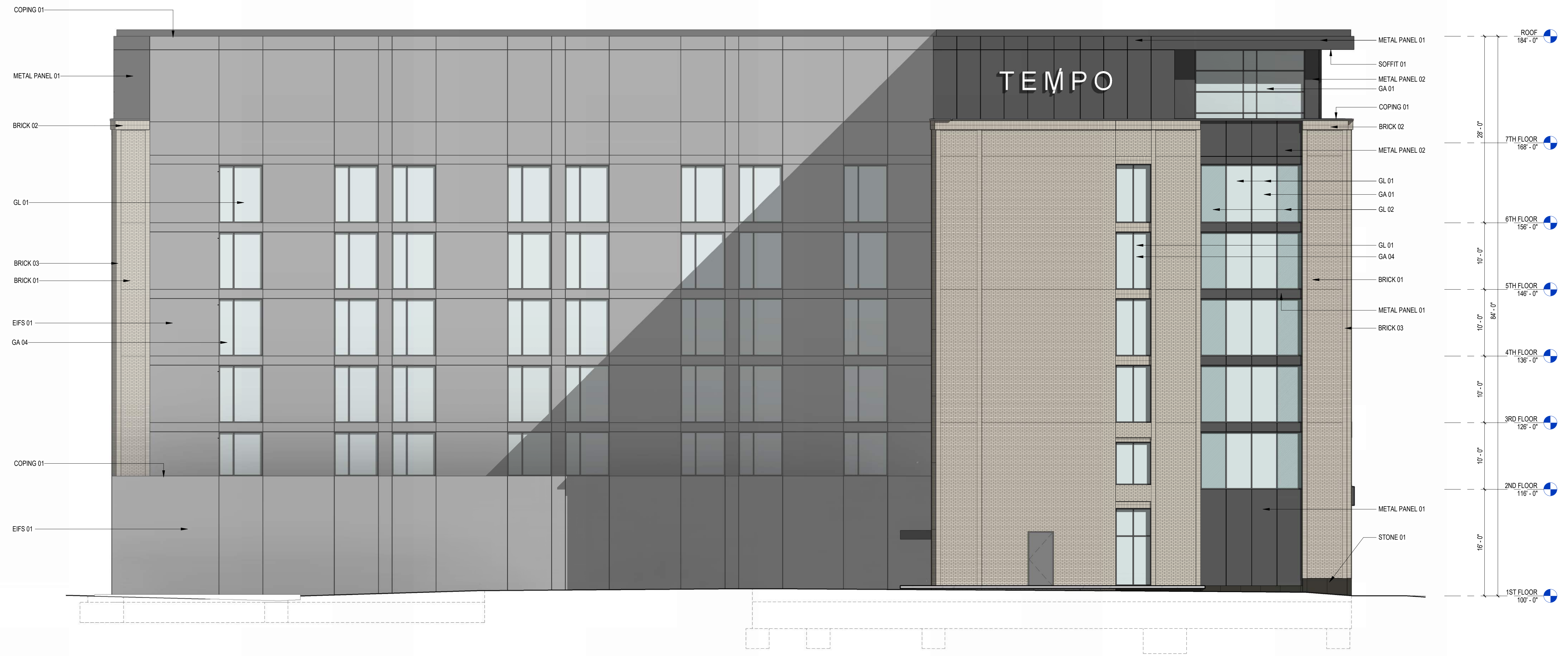
1 EAST ELEVATION
1/8" = 1'-0"

KEYNOTES - ASSEMBLIES & COMPONENTS	
BRICK 01	UNIT MASONRY - FACE BRICK
BRICK 02	DOUBLE SOLDIER COURSE
BRICK 03	STACKED BOND PATTERN
COPING 01	PREFINISHED METAL PANEL, FINISH TO MATCH METAL PANEL 01
EIFS 01	EXTERIOR INSULATION FINISH SYSTEM W/ EXTERIOR DRAINAGE PLANE
GA 01	4 1/2" STOREFRONT WINDOW SYSTEM, BASIS OF DESIGN KAWNEER 451, SEE ASSEMBLIES SHEET A500 FOR ADDITIONAL INFORMATION
GA 04	UNIT WINDOW
GL 01	VISION GLASS
GL 02	OPAQUE SPANDREL GLASS
METAL PANEL 01	CHARCOAL GREY ALUMINUM METAL PANEL
METAL PANEL 02	METAL COMPOSITE MATERIAL PANEL
SOFFIT 01	ALUMINUM METAL SOFFIT, FINISH TO MATCH METAL PANEL 01
STONE 01	GRANITE STONE BASE

EXTERIOR ELEVATION GENERAL NOTES

1. ALL METAL SURFACES EXPOSED TO VIEW (INCLUDING MISCELLANEOUS METALS, PIPING, MECHANICAL EQUIPMENT, LADDERS, STAIRS, RAILING, COLUMNS, PLATFORMS, ETC.) SHALL BE PAINTED, U.N.O.
2. WINDOWS ARE ALUMINUM STOREFRONT U.N.O.
3. CONTROL JOINTS IN CMU BACKUP TO BE OFFSET FROM CONTROL JOINTS IN MASONRY/STONE VENEER. CONTROL JOINTS AT CMU BACKUP MAXIMUM 28" SPACING.
4. PROVIDE CONTROL JOINTS AT INSIDE CORNERS OF BRICK AND STONE.

NOT FOR CONSTRUCTION



Revisions

VE REDESIGN

SCOPE DOCUMENTS

Drawing Date
07/19/2024

MILWAUKEE HILTON
TEMPO

308 W. KILBOURN AVE
MILWAUKEE, WI 53203

Project No. HKS HOLDINGS
220094.00 000123

Sheet Title
EXTERIOR ELEVATIONS

Copyright © 2024 Kahler Slater, Inc. All rights reserved.
104 Shookoe Stg, Richmond, Virginia 23219
Telephone 804.787.2500
111 West Wisconsin Avenue, Milwaukee, Wisconsin 53203
Telephone 414.272.2000 Fax 414.272.2001
722 Williamson Street, Madison, Wisconsin 53703
Telephone 608.263.6300 Fax 608.263.6317
125 South Clark Street, Suite 675-2, Chicago, Illinois 60603
Telephone 312.789.4516

Sheet No.
A202

1 WEST ELEVATION
1/8" = 1'-0"

EXTERIOR ELEVATION GENERAL NOTES

1. ALL METAL SURFACES EXPOSED TO VIEW (INCLUDING MISCELLANEOUS METALS, PIPING, MECHANICAL EQUIPMENT, LADDERS, STAIRS, RAILING, COLUMNS, PLATFORMS, ETC.) SHALL BE PAINTED, U.N.O.
2. WINDOWS ARE ALUMINUM STOREFRONT U.N.O.
3. CONTROL JOINTS IN CMU BACKUP TO BE OFFSET FROM CONTROL JOINTS IN MASONRY/STONE VENEER. CONTROL JOINTS AT CMU BACKUP MAXIMUM 28" SPACING.
4. PROVIDE CONTROL JOINTS AT INSIDE CORNERS OF BRICK AND STONE.

KEYNOTES - ASSEMBLIES & COMPONENTS

BRICK 01	UNIT MASONRY - FACE BRICK
BRICK 02	DOUBLE SOLDIER COURSE
BRICK 03	STACKED BOND PATTERN
CANOPY 01	CHARCOAL GREY ALUMINUM METAL CANOPY, FINISH TO MATCH METAL PANEL 01
COPING 01	PREFINISHED METAL PANEL, FINISH TO MATCH METAL PANEL 01
EIFS 01	EXTERIOR INSULATION FINISH SYSTEM W/ EXTERIOR DRAINAGE PLANE
GA 01	4 1/2" STOREFRONT WINDOW SYSTEM, BASIS OF DESIGN KAWNEER 451, SEE ASSEMBLIES SHEET A500 FOR ADDITIONAL INFORMATION.
GA 02	6" STOREFRONT WINDOW SYSTEM, BASIS OF DESIGN KAWNEER 601, SEE ASSEMBLIES SHEET A500 FOR ADDITIONAL INFORMATION.
GA 04	UNIT WINDOW
GL 01	VISION GLASS
GL 02	OPAQUE SPANDREL GLASS
METAL PANEL 01	CHARCOAL GREY ALUMINUM METAL PANEL
SOFFIT 01	ALUMINUM METAL SOFFIT, FINISH TO MATCH METAL PANEL 01
STONE 01	GRANITE STONE BASE



2 NORTH ELEVATION
1/8" = 1'-0"

NOT FOR CONSTRUCTION

Revisions

VE REDESIGN

SCOPE DOCUMENTS

Drawing Date
07/19/2024

MILWAUKEE HILTON
TEMPO

308 W. KILBOURN AVE
MILWAUKEE, WI 53203

Project No. HKS HOLDINGS
220094.00 000123

Sheet Title

EXTERIOR ELEVATIONS

Copyright © 2024 Kahler Slater, Inc. All rights reserved.
104 Shookoe St., Richmond, Virginia 23219
Telephone 804.787.2500
111 West Wisconsin Avenue, Milwaukee, Wisconsin 53203
Telephone 414.272.2000 Fax 414.272.2001
722 Williamson Street, Madison, Wisconsin 53703
Telephone 608.263.6300 Fax 608.263.6317
125 South Clark Street, Suite 675-2, Chicago, Illinois 60603
Telephone 312.789.4516

Sheet No.
A203



1 SOUTH ELEVATION
1/8" = 1'-0"



NOT FOR
CONSTRUCTION

Revisions

VE REDESIGN

SCOPE DOCUMENTS

Drawing Date
07/19/2024

MILWAUKEE HILTON
TEMPO

308 W. KILBOURN AVE
MILWAUKEE, WI 53203

Project No.	HKS HOLDINGS
220094.00	000123

Sheet Title
EXTERIOR VIEWS

Copyright © 2024 Kahler Slater, Inc. All rights reserved.
 104 Shockey St., Richmond, Virginia 23219
 Telephone 804.787.2500

111 West Wisconsin Avenue, Milwaukee, Wisconsin 53203
 Telephone 414.272.2000 Fax 414.272.2001

722 Williamson Street, Madison, Wisconsin 53703
 Telephone 608.263.6300 Fax 608.263.6317

125 South Clark Street, Suite 675-2, Chicago, Illinois 60603
 Telephone 312.789.4516

Sheet No.
A204



NOT FOR
CONSTRUCTION

Revisions

VE REDESIGN

SCOPE DOCUMENTS

Drawing Date
07/19/2024

MILWAUKEE HILTON
TEMPO

308 W. KILBOURN AVE
MILWAUKEE, WI 53203

Project No.	HKS HOLDINGS
220094.00	000123

Sheet Title
EXTERIOR VIEWS

Copyright © 2024 Kahler Slater, Inc. All rights reserved.
104 Shockoe Slip, Richmond, Virginia 23219
Telephone 804.787.2500
111 West Wisconsin Avenue, Milwaukee, Wisconsin 53203
Telephone 414.272.2000 Fax 414.272.2001
722 Williamson Street, Madison, Wisconsin 53703
Telephone 608.263.6300 Fax 608.263.6317
125 South Clark Street, Suite 675-2, Chicago, Illinois 60603
Telephone 312.789.4516

Sheet No.
A205