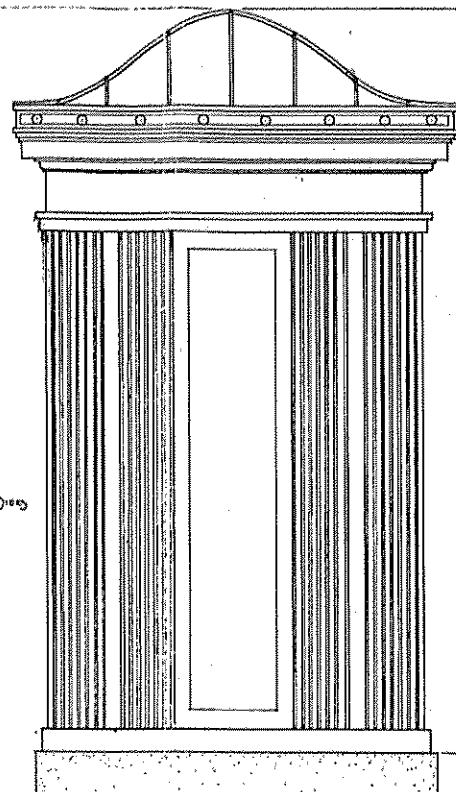


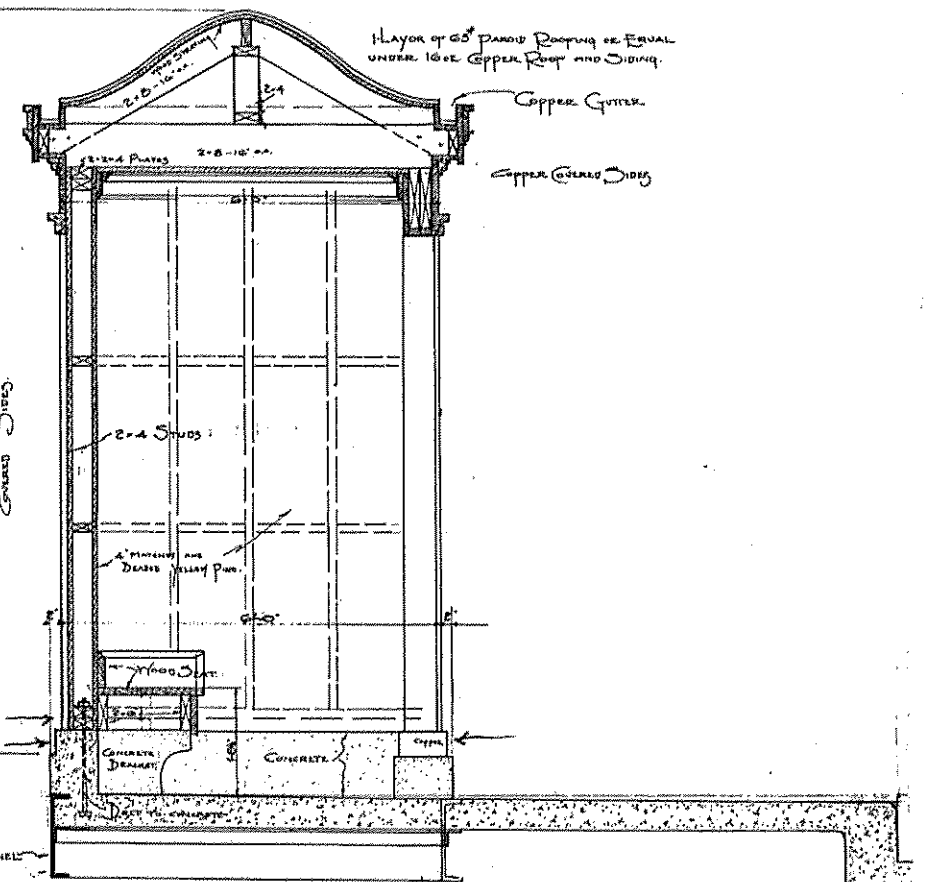
FRONT ELEVATION

Scale 3/4" = 1'-0"



SIDE VIEW

Scale 3/4" = 1'-0"



SECTION

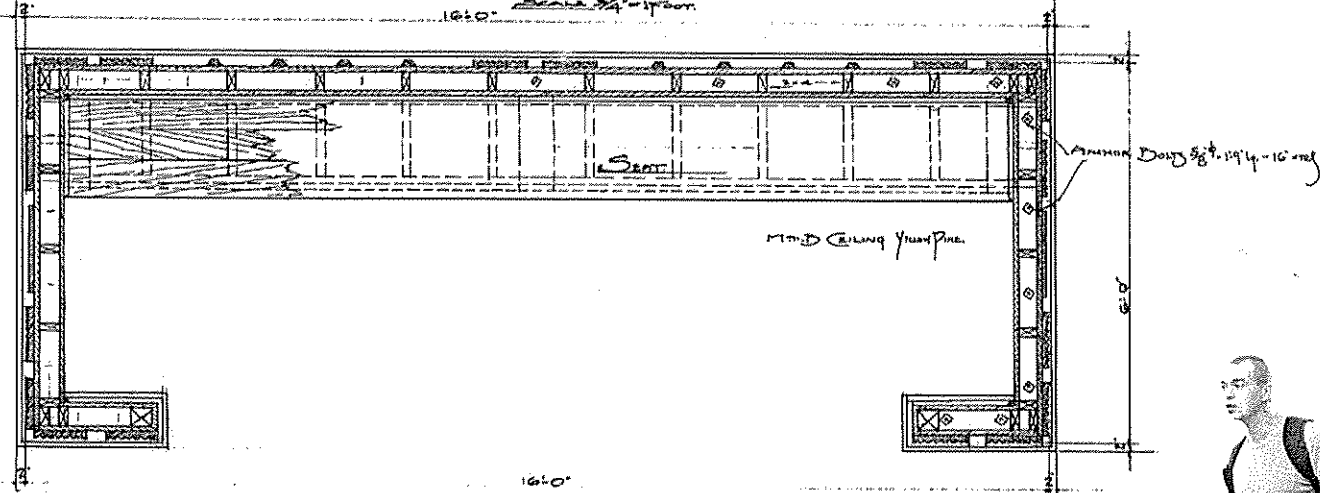
Scale 3/4" = 1'-0"

SALVAGED/RESTORED COPPER ROOF AND CORNICE

~~NO LIGHTING BEHIND GLASS DISK~~

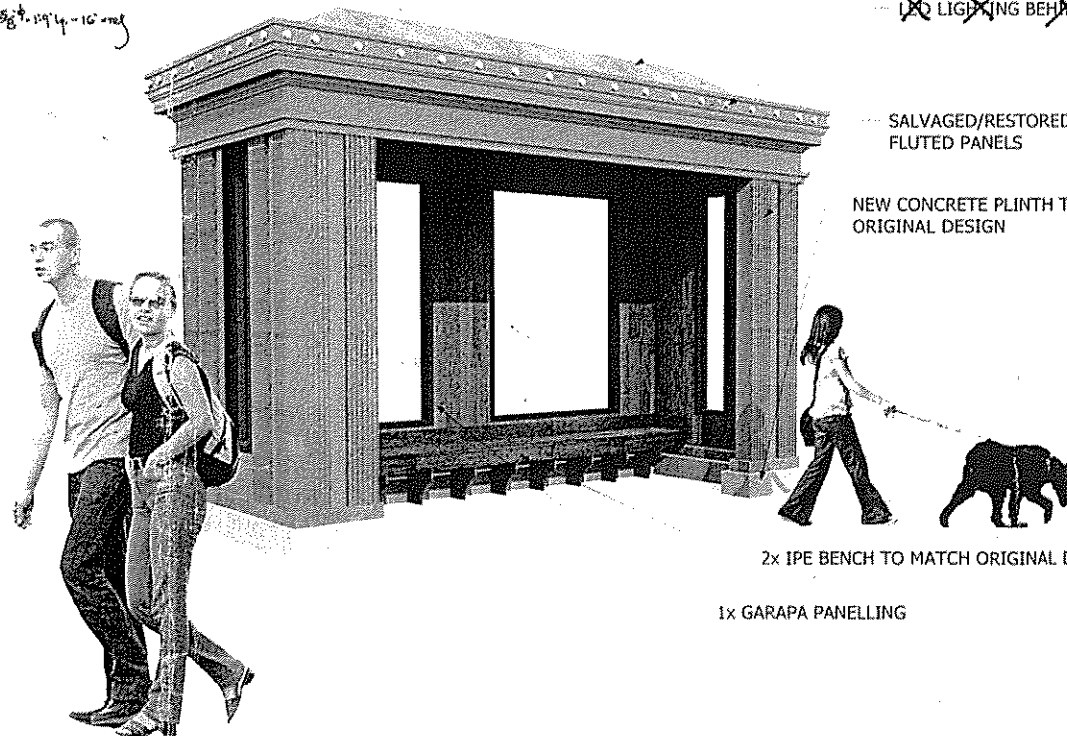
SALVAGED/RESTORED COPPER FLUTED PANELS

NEW CONCRETE PLINTH TO MATCH ORIGINAL DESIGN



PLAN

Scale 3/4" = 1'-0"



2x IPE BENCH TO MATCH ORIGINAL DESIGN

1x GARAPA PANELLING

Correct: *Marnell Estlin*
DUPY of Bridges & Public Bldgs

Approved: *[Signature]*
COMMISSIONER of PUBLIC WORKS

VIADUCT
CONNECTING
SIXTEENTH ST. & ELEVENTH AVE.

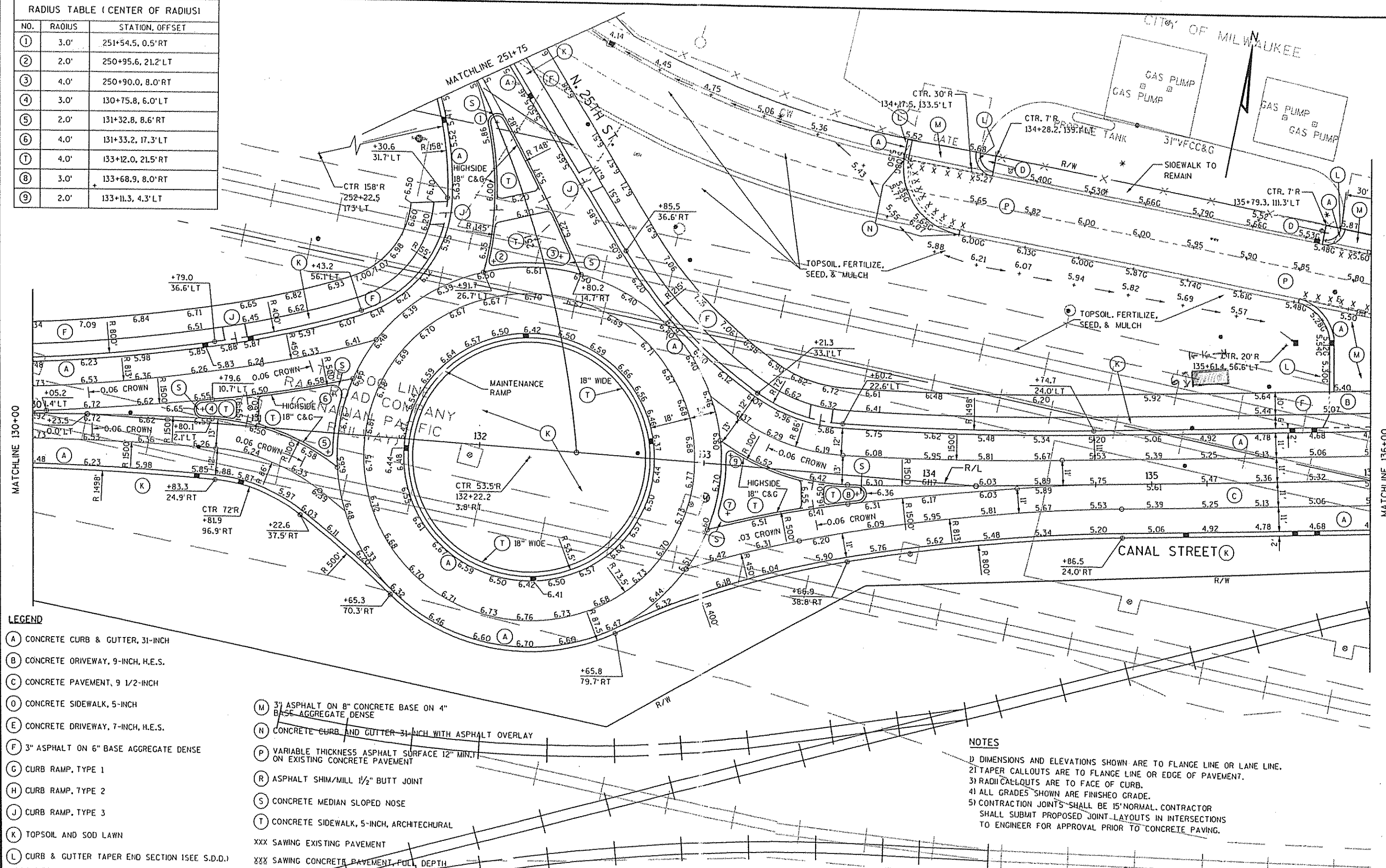
CAR STOP SHELTERS

CITY OF MILWAUKEE
DEPARTMENT OF PUBLIC WORKS
BUREAU OF BRIDGES & PUBLIC BLDGS.

DESIGNED BY: *[Signature]* DATE: 12-11-1917
DRAWN BY: *[Signature]* SCALE: 3/4" = 1'-0"
TRACED BY: *[Signature]*
CHECKED BY: *[Signature]* SHEET No. 35 of 35 SHEETS

RADIUS TABLE (CENTER OF RADIUS)		
NO.	RADIUS	STATION, OFFSET
①	3.0'	251+54.5, 0.5' RT
②	2.0'	250+95.6, 21.2' LT
③	4.0'	250+90.0, 8.0' RT
④	3.0'	130+75.8, 6.0' LT
⑤	2.0'	131+32.8, 8.6' RT
⑥	4.0'	131+33.2, 17.3' LT
⑦	4.0'	133+12.0, 21.5' RT
⑧	3.0'	133+68.9, 8.0' RT
⑨	2.0'	133+11.3, 4.3' LT

LEVELS ON: 1.2, 3.4, 5.6, 7.8, 9.9, 10.2, 12.3, 14.5, 16.7, 18.9, 20.2, 22.3, 24.5, 26.7, 28.9, 30.3, 32.5, 34.7, 36.9, 39.1, 41.3, 43.5, 45.7, 47.9, 49.5, 51.5, 53.5, 55.5, 57.5, 59.5, 61.5, 63.5



- LEGEND**
- (A) CONCRETE CURB & GUTTER, 31-INCH
 - (B) CONCRETE DRIVEWAY, 9-INCH, H.E.S.
 - (C) CONCRETE PAVEMENT, 9 1/2-INCH
 - (D) CONCRETE SIDEWALK, 5-INCH
 - (E) CONCRETE DRIVEWAY, 7-INCH, H.E.S.
 - (F) 3" ASPHALT ON 6" BASE AGGREGATE DENSE
 - (G) CURB RAMP, TYPE 1
 - (H) CURB RAMP, TYPE 2
 - (J) CURB RAMP, TYPE 3
 - (K) TOPSOIL AND SOD LAWN
 - (L) CURB & GUTTER TAPER END SECTION (SEE S.D.D.)
 - (M) 3" ASPHALT ON 8" CONCRETE BASE ON 4" BASE AGGREGATE DENSE
 - (N) CONCRETE CURB AND GUTTER 31-INCH WITH ASPHALT OVERLAY
 - (P) VARIABLE THICKNESS ASPHALT SURFACE 12" MIN. ON EXISTING CONCRETE PAVEMENT
 - (R) ASPHALT SHIM/MILL 1/2" BUTT JOINT
 - (S) CONCRETE MEDIAN SLOPED NOSE
 - (T) CONCRETE SIDEWALK, 5-INCH, ARCHITECTURAL
- XXX SAWING EXISTING PAVEMENT
 XXXX SAWING CONCRETE PAVEMENT, FULL DEPTH

- NOTES**
- 1) DIMENSIONS AND ELEVATIONS SHOWN ARE TO FLANGE LINE OR LANE LINE.
 - 2) TAPER CALLOUTS ARE TO FLANGE LINE OR EDGE OF PAVEMENT.
 - 3) RADIUS CALLOUTS ARE TO FACE OF CURB.
 - 4) ALL GRADES SHOWN ARE FINISHED GRADE.
 - 5) CONTRACTION JOINTS SHALL BE 15' NORMAL. CONTRACTOR SHALL SUBMIT PROPOSED JOINT LAYOUTS IN INTERSECTIONS TO ENGINEER FOR APPROVAL PRIOR TO CONCRETE PAVING.