

2021-10-29

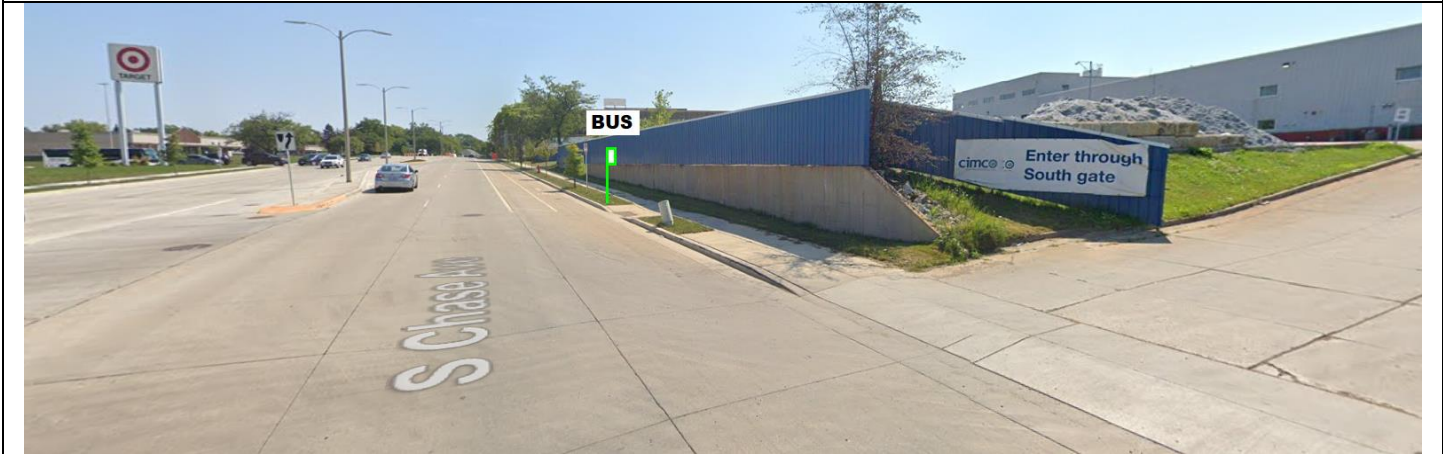
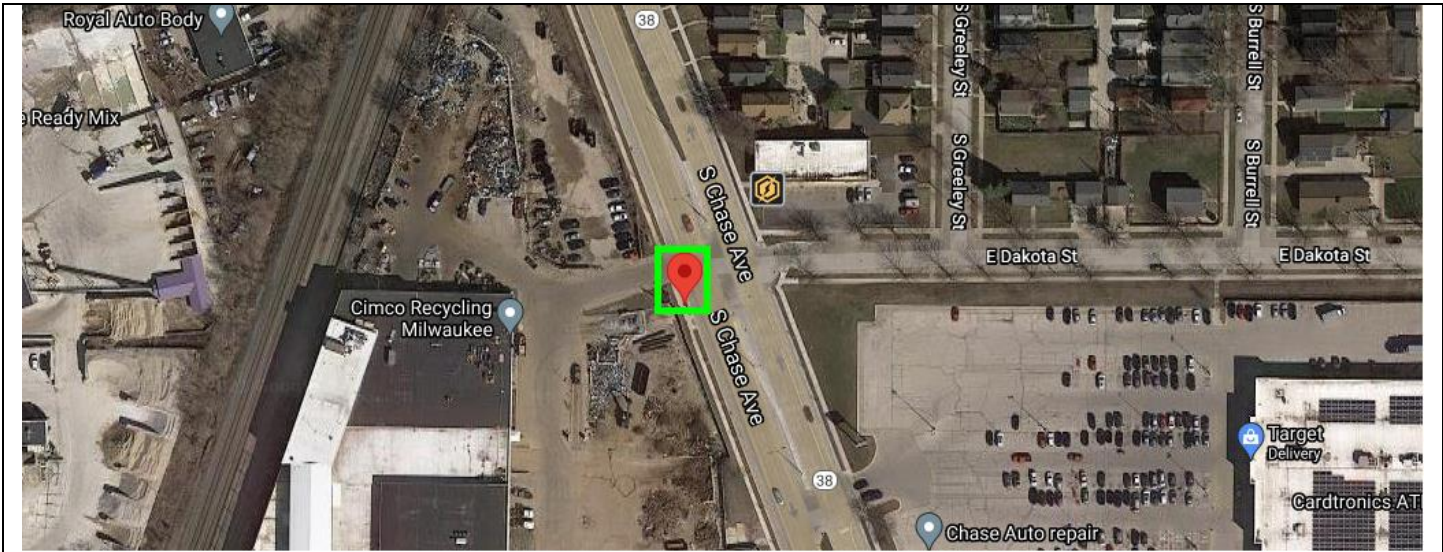
# MCTS Proposed Bus Stop Locations City of Milwaukee November 2021

Recommended by the Transit Stop Technical Advisory Committee



**David Locher**  
**Transportation Manager**  
**414-343-1727**  
[dlocher@mcts.org](mailto:dlocher@mcts.org)

BUS STOP ID #9567	SOUTHBOUND CHASE & DAKOTA (FARSIDE) #9567 (42.992399, -87.910345)
-------------------	---

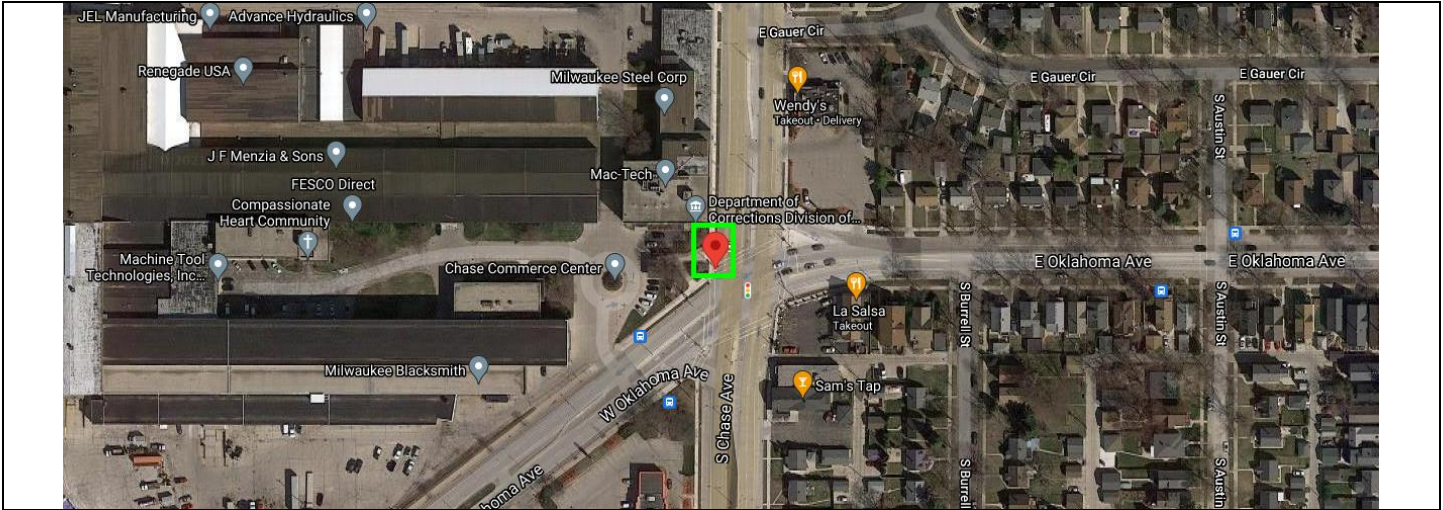


Route(s)	Route 54
Reason for New Location	New routing for MCTS Next <a href="#">Fall 2021 Current System Map with MCTS NEXT</a>
Distance from previous stop	0.3 miles, SB CHASE & ROSEDALE #211 (42.996052, -87.912249)
Distance to following stop	0.3 miles, SB CHASE & OKLAHOMA #9568 (42.988262, -87.909521)
Parking Impacts	None
Mobility/Accessibility	Passengers board in ped ramp. All MCTS buses are equipped with a kneeling feature and ADA ramp. MCTS Operators are trained to assist passengers boarding with a mobility device.
Pedestrian Safety	
County Supervisor	Jason Haas, Dist. 14
City Alder	Marina Dimitrijevic, Dist. 14

Additional Information/Comments

City of Milwaukee DPW: Update striping.

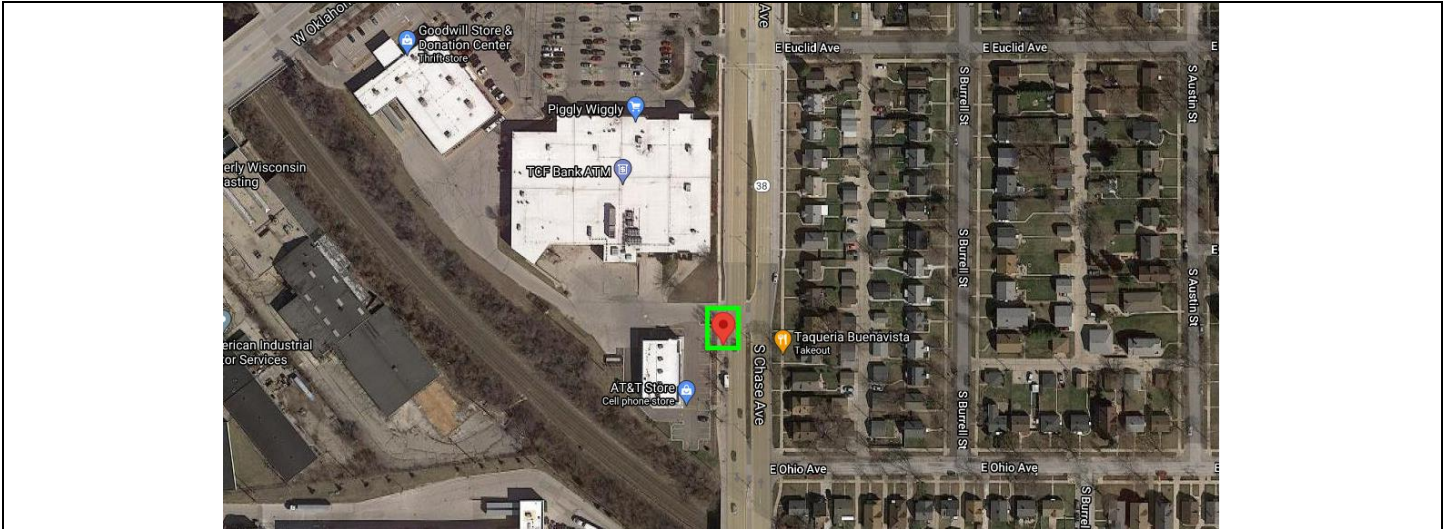
BUS STOP ID #9568	SOUTHBOUND CHASE & OKLAHOMA (NEAR SIDE) #9568 (42.988262, -87.909521)
-------------------	---



Route(s)	Route 54
Reason for New Location	New routing for MCTS Next <a href="#">Fall 2021 Current System Map with MCTS NEXT</a>
Distance from previous stop	0.3 miles, SB CHASE & DAKOTA #9567 (42.992438, -87.910411)
Distance to following stop	0.2 miles, SB CHASE & EUCLID #9569 (42.985223, -87.909615)
Parking Impacts	None
Mobility/Accessibility	Currently no boarding pad, passengers board in grass terrace. Seek to coordinate future upgrades as resources become available. All MCTS buses are equipped with a kneeling feature and ADA ramp. MCTS operators are trained to assist passengers boarding with a mobility device.
Pedestrian Safety	
County Supervisor	Jason Haas, Dist. 14
City Alderperson	Marina Dimitrijevic, Dist. 14

**Additional Information/Comments**  
 City of Milwaukee DPW: In right turn only lane (bus travels straight), post EXCEPT BUSES sign.

BUS STOP ID #9569	SOUTHBOUND CHASE & OHIO (NEARSIDE) #9569 (42.985223, -87.909615)
-------------------	--

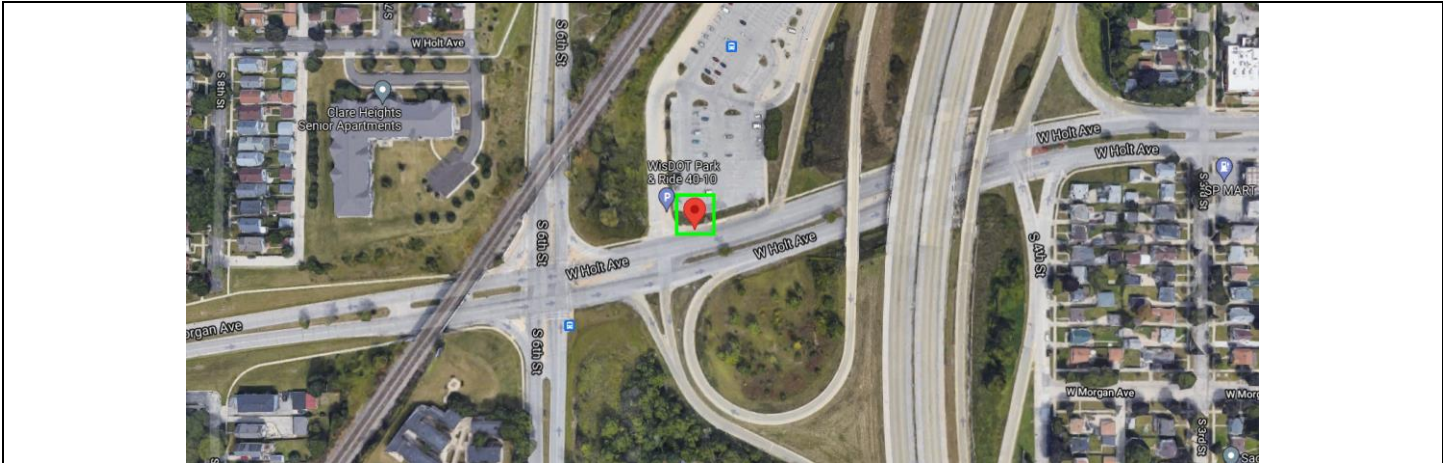


Route(s)	Route 54
Reason for New Location	New routing for MCTS Next <a href="#">Fall 2021 Current System Map with MCTS NEXT</a>
Distance from previous stop	0.2 miles, SB CHASE & OKLAHOMA #9568 (42.988262, -87.909521)
Distance to following stop	0.3 miles, WB HOLT & S1 #4959 (42.982553, -87.911337)
Parking Impacts	Request NO PARKING BUS STOP: W/S S Chase Ave from driveway of 3259 S Chase Ave to south 120.'
Mobility/Accessibility	Mobility standards met
Pedestrian Safety	
County Supervisor	Jason Haas, Dist. 14
City Alderperson	Marina Dimitrijevic, Dist. 14

**Additional Information/Comments**

City of Milwaukee DPW: Note to incorporate striping and parking into future project 2060-18-70 Chase Avenue Bridge over CNW Railroad (Let Date 12/12/2023).

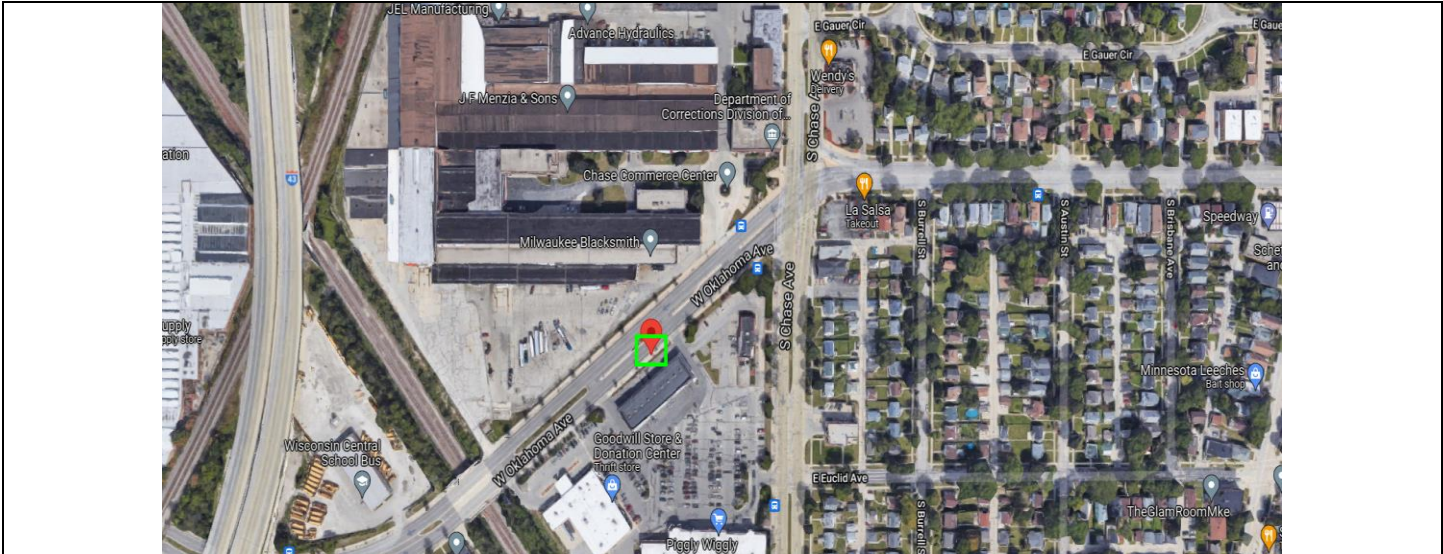
BUS STOP ID #9570	WESTBOUND HOLT & S6 (HOLT LOT) #9570 (42.981927, -87.918165)
-------------------	--



Route(s)	Route 54
Reason for New Location	New routing for MCTS Next <a href="#">Fall 2021 Current System Map with MCTS NEXT</a>
Distance from previous stop	0.3 miles, WB HOLT & S2 #2781 (42.982559, -87.913035)
Distance to following stop	0.2 miles, NB 6TH STREET & OHIO #7195 (42.984774, -87.919080)
Parking Impacts	None
Mobility/Accessibility	Walk is 7.5' deep, just short of 8' ADA compliance. Operationally manageable. Use of bus's kneeling feature and ADA ramp to board in street at Holt Lot entrance if needed. All operators are trained to assist persons boarding with a mobility device.
Pedestrian Safety	Crosswalk, access to signalized crosswalk
County Supervisor	Jason Haas, Dist. 14
City Alderperson	Marina Dimitrijevic, Dist. 14

Additional Information/Comments

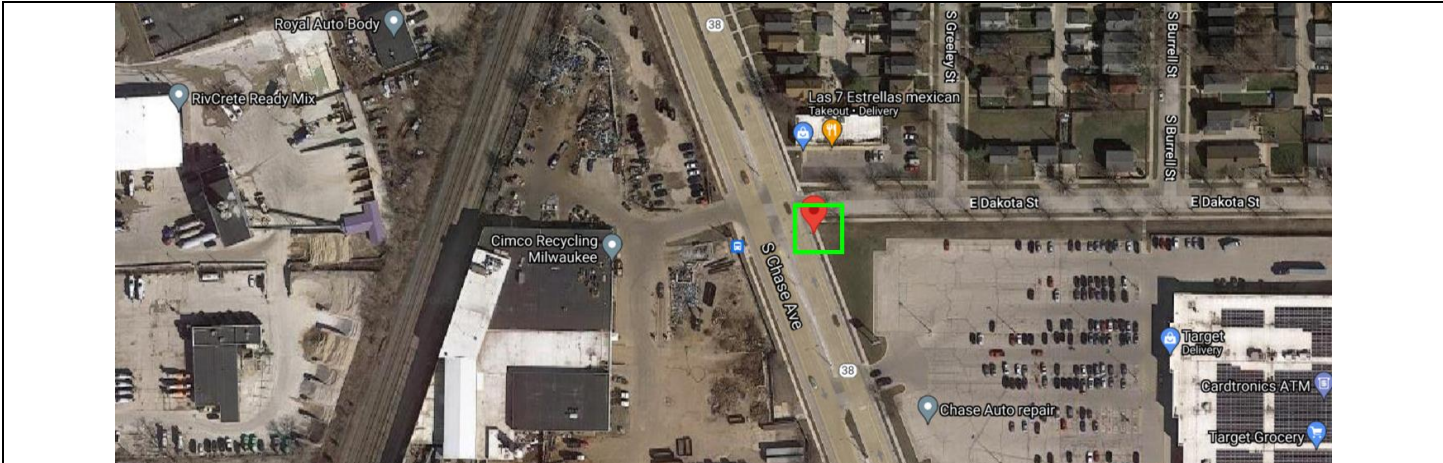
BUS STOP ID #9571 | NORTHBOUND CHASE & OKLAHOMA (FARSIDE) #9571 (42.987243, -87.910765)



Route(s)	Route 54
Reason for New Location	New routing for MCTS Next <a href="#">Fall 2021 Current System Map with MCTS NEXT</a>
Distance from previous stop	0.4 miles, EB OKLAHOMA & 3RD STREET #252 (42.985822, -87.914513)
Distance to following stop	0.2 miles, NB CHASE & DAKOTA #9572 (42.992454, -87.910041)
Parking Impacts	None
Mobility/Accessibility	Mobility needs met.
Pedestrian Safety	
County Supervisor	Ryan Clancy, Dist. 4
City Alder	Marina Dimitrijevic, Dist. 14

Additional Information/Comments  
 City of Milwaukee DPW: Update striping.

Bus Stop ID #9572	NORTHBOUND CHASE & DAKOTA (MID-BLOCK) #9572 (42.992454, -87.910041)
-------------------	---

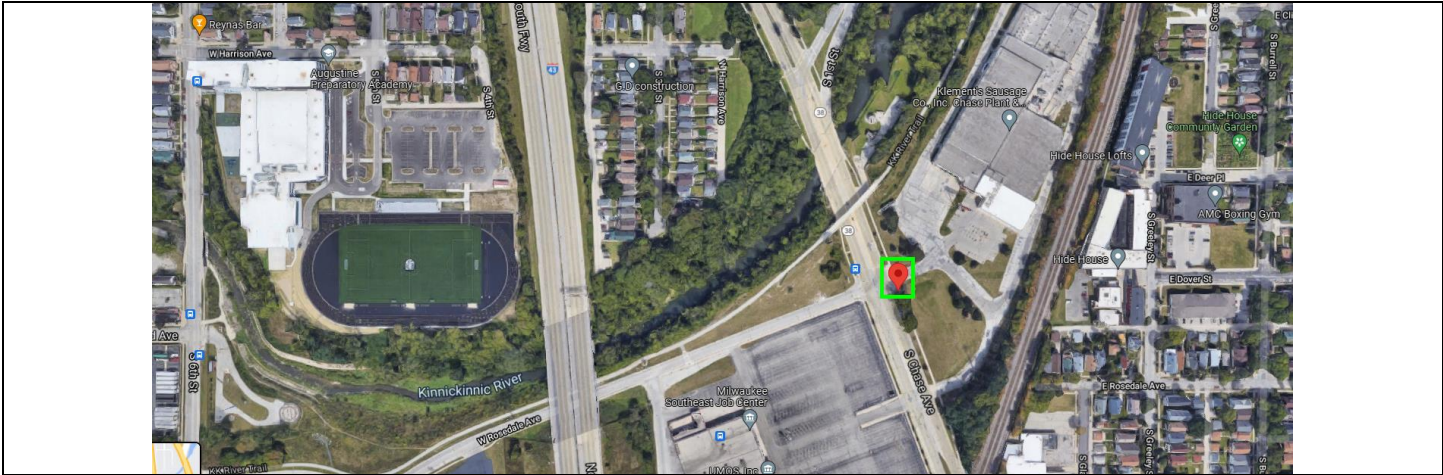


Route(s)	Route 54
Reason for New Location	New routing for MCTS Next <a href="#">Fall 2021 Current System Map with MCTS NEXT</a>
Distance from previous stop	0.2 miles, NB CHASE & OKLAHOMA #9571 (42.989120, -87.909144)
Distance to following stop	0.3 miles, NB CHASE & ROSEDALE #254 (42.995902, -87.911818)
Parking Impacts	None
Mobility/Accessibility	Currently no boarding pad, passengers board in grass terrace. Seek to coordinate future upgrades as resources become available. All MCTS buses are equipped with a kneeling feature and ADA ramp, and may board at street level near ped ramp on SE corner. MCTS operators are trained to assist passengers boarding with a mobility device.
Pedestrian Safety	
County Supervisor	Ryan Clancy, Dist. 4
City Alderperson	Marina Dimitrijevic, Dist. 14

Additional Information/Comments

City of Milwaukee DPW: Update striping.

BUS STOP ID #254      NORTHBOUND CHASE & ROSEDALE (NEARSIDE) #254 (42.995902, -87.911818)



Route(s)	Route 54
Reason for New Location	New routing for MCTS Next <a href="#">Fall 2021 Current System Map with MCTS NEXT</a>
Distance from previous stop	0.3 miles, NB CHASE & DAKOTA #9572 (42.992454, -87.910041)
Distance to following stop	0.5 miles, NB 1ST STREET & LINCOLN (FARSIDE) #8019 (43.003190, -87.911191)
Parking Impacts	None
Mobility/Accessibility	Currently no boarding pad, passengers board in grass terrace. Seek to coordinate future upgrades as resources become available. All MCTS buses are equipped with a kneeling feature and ADA ramp, and may board at adjacent driveway. MCTS operators are trained to assist passengers boarding with a mobility device.
Pedestrian Safety	
County Supervisor	Ryan Clancy, Dist. 4
City Alder	Marina Dimitrijevic, Dist. 14

**Additional Information/Comments**  
 City of Milwaukee DPW: Update striping.



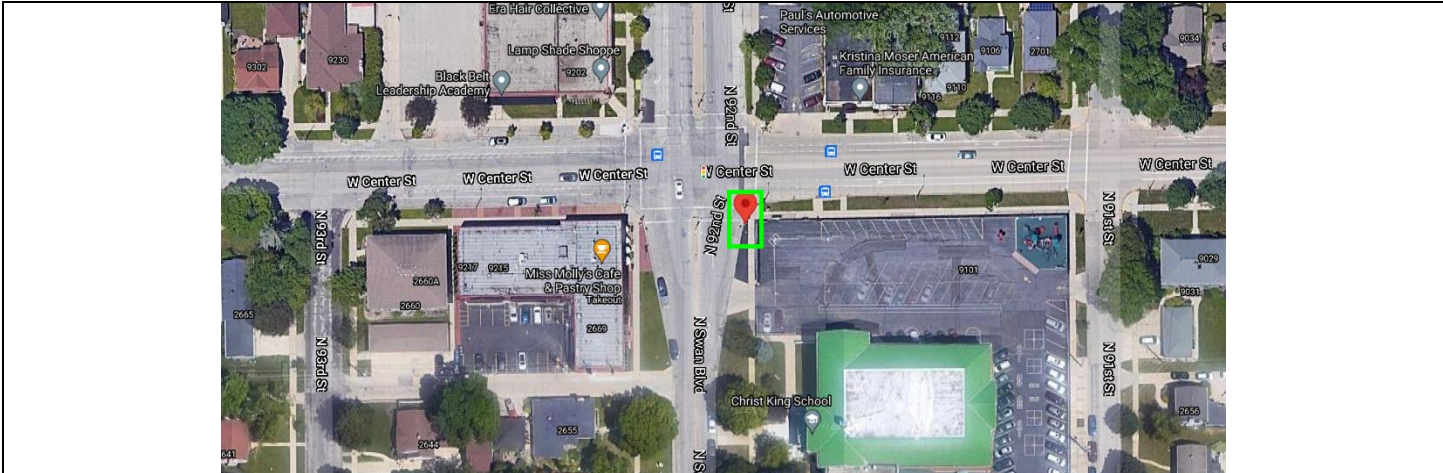
Bus Stop ID #9731	SOUTHBOUND N92-SWAN & CENTER (SET BACK) (43.068338, -88.027699)
-------------------	---



Route(s)	Route 92
Reason for New Location	New routing for MCTS Next <a href="#">Fall 2021 Current System Map with MCTS NEXT</a>
Distance from previous stop	0.3 miles, SB 92ND STREET & LOCUST #5597 (43.071505, -88.027718)
Distance to following stop	0.5 miles, SB SWAN & NORTH AVENUE #9705 (43.060579, -88.027587)
Parking Impacts	Request NO PARKING BUS STOP: W/S N. 92 <sup>nd</sup> St. from alley (just south of address 2737) to south 80.'
Mobility/Accessibility	Currently no boarding pad, passengers board in grass terrace. Seek to coordinate future upgrades as resources become available. All MCTS buses are equipped with a kneeling feature and ADA ramp and may board in alley/driveway to the north. MCTS operators are trained to assist passengers boarding with a mobility device.
Pedestrian Safety	Signalized intersection and crosswalk
County Supervisor	Shawn Rolland, Dist. 6
City Alders	Nikiya Dodd, Dist. 5

Additional Information/Comments

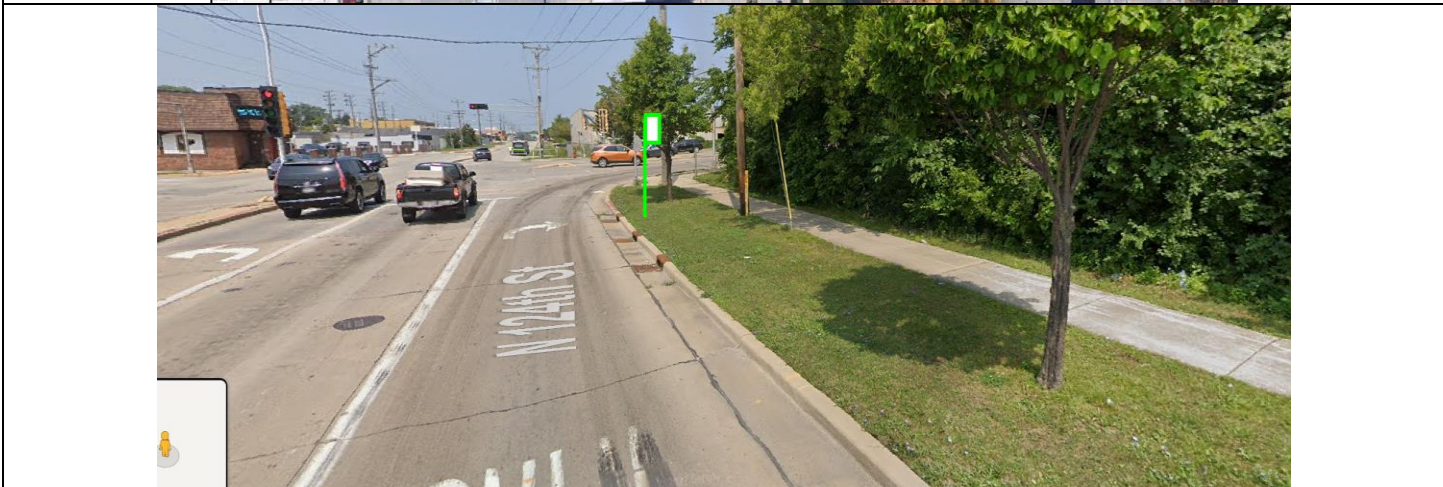
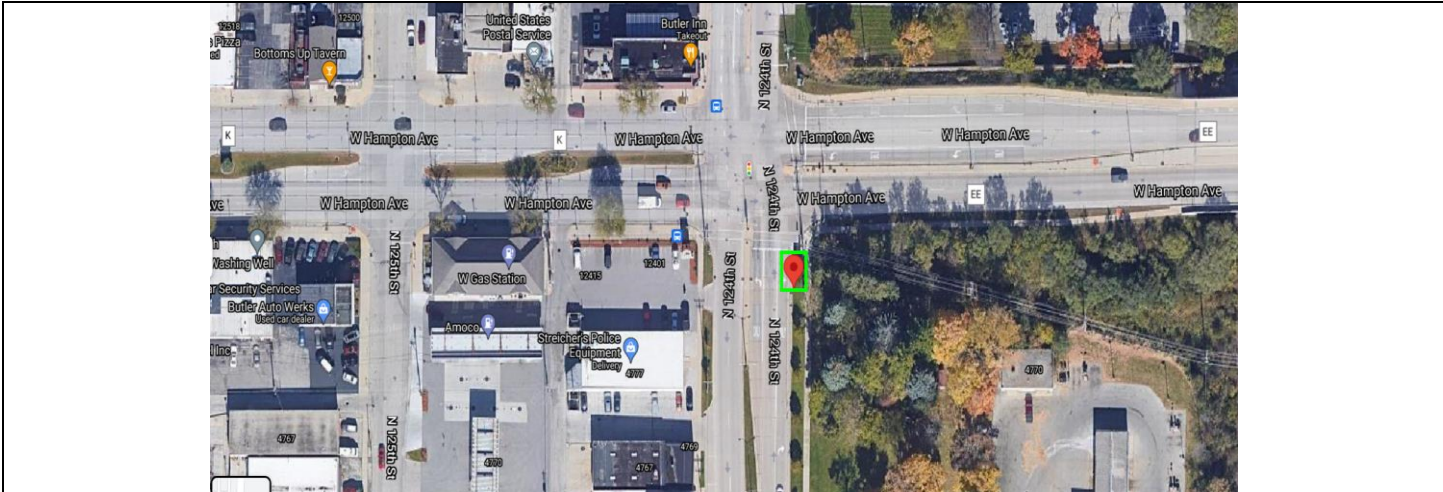
Bus Stop ID #9730    NORTHBOUND SWAN & CENTER (NEARSIDE) #9730 (43.067636, -88.027374)



Route(s)	Route 22
Reason for New Location	New routing for MCTS Next <a href="#">Fall 2021 Current System Map with MCTS NEXT</a>
Distance from previous stop	0.5 miles, NB SWAN & NORTH AVE #9704 (43.060331, -88.027380)
Distance to following stop	0.3 miles, NB N92 & LOCUST #5570 (43.071325, -88.027410)
Parking Impacts	Request NO PARKING BUS STOP: E/S N. 92 <sup>nd</sup> St. from W. Center St. to south 45' (to driveway/Wauwatosa border).
Mobility/Accessibility	Currently no boarding pad, passengers board in grass terrace. Seek to coordinate future upgrades as resources become available. All MCTS buses are equipped with a kneeling feature and ADA ramp, and may board at driveway to south. MCTS operators are trained to assist passengers boarding with a mobility device.
Pedestrian Safety	Signalized intersection and crosswalk
County Supervisor	Shawn Rolland, Dist. 6
City Alderperson	Nikiya Dodd, Dist. 5

Additional Information/Comments

BUS STOP ID #9584	NORTHBOUND N124 & HAMPTON (NEARSIDE) #9584 (43.104477, - 88.065870)
-------------------	---

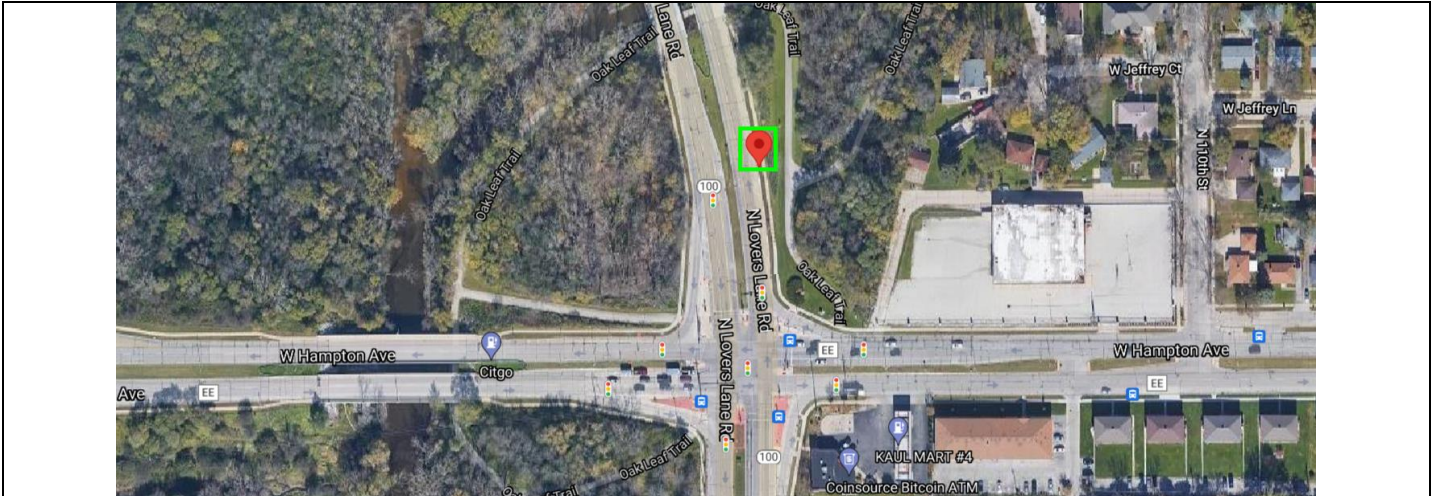


Route(s)	Route 28
Reason for New Location	New routing for MCTS Next <a href="#">Fall 2021 Current System Map with MCTS NEXT</a>
Distance from previous stop	0.2 miles, NB N124 & PECK #9583 (43.101816, -88.065967)
Distance to following stop	0.7 miles, NB N LOVERS LANE & HAMPTON (FARSIDE) #9585 (43.105529, -88.052809)
Parking Impacts	None
Mobility/Accessibility	Currently no boarding pad, passengers board in grass terrace. Seek to coordinate future upgrades as resources become available. All MCTS buses are equipped with a kneeling feature and ADA ramp. MCTS operators are trained to assist passengers boarding with a mobility device.
Pedestrian Safety	Signalized intersection and crosswalk
County Supervisor	Russell Antonio Goodwin, Sr., Dist. 18
City Alder	Nikiya Dodd, Dist. 5

Additional Information/Comments

MCTS: Right Turn Only lane. Bus makes right turn per routing. No additional signage requested.

BUS STOP ID #9585	NORTHBOUND N LOVERS LANE & HAMPTON (FARSIDE) (43.105607, - 88.052829)
-------------------	---



Route(s)	Route 28
Reason for New Location	New routing for MCTS Next <a href="#">Fall 2021 Current System Map with MCTS NEXT</a>
Distance from previous stop	0.7 miles, NB N124 & HAMPTON #9584 (43.104563, -88.065847)
Distance to following stop	0.4 miles, NB LOVER LANE & 5100 N #4200 (43.110442, -88.055489)
Parking Impacts	None
Mobility/Accessibility	Currently no boarding pad, passengers board in grass terrace. Seek to coordinate future upgrades as resources become available.
Pedestrian Safety	Near signalized intersection and crosswalk
County Supervisor	Russell Antonio Goodwin, Sr., Dist. 18
City Alder	Nikiya Dodd, Dist. 5

Additional Information/Comments

WisDOT right-of-way

BUS STOP ID #9586	WESTBOUND SILVER SPRING & RAE (NEARSIDE) #9586 (43.117190, -88.060820)
-------------------	--

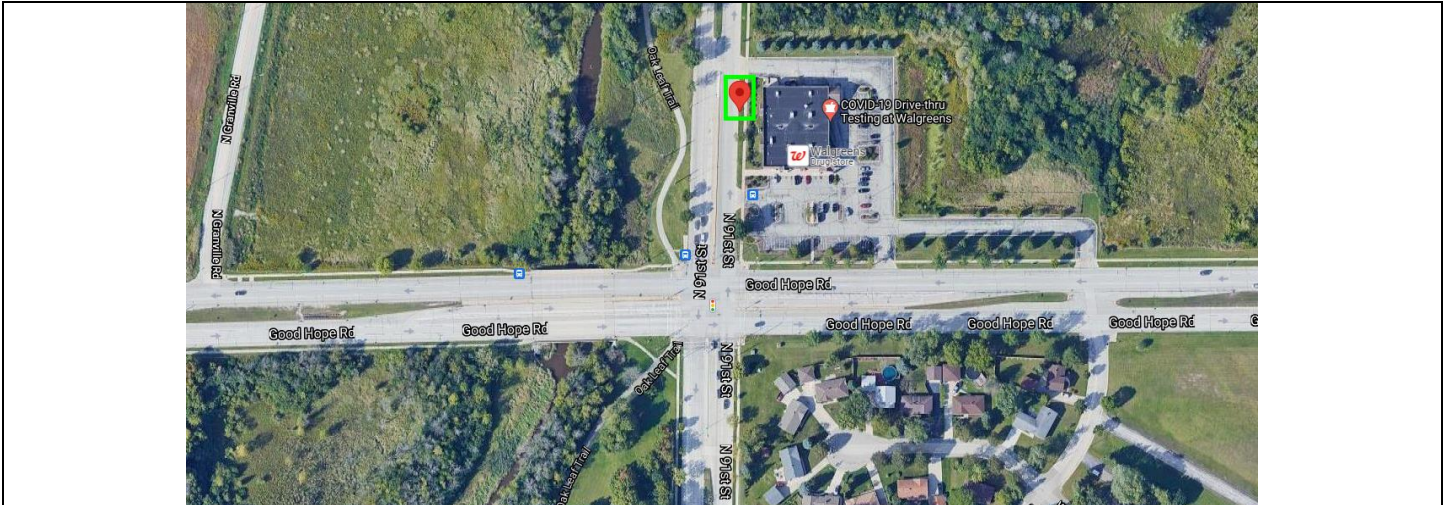


Route(s)	Route 28
Reason for New Location	New routing for MCTS Next <a href="#">Fall 2021 Current System Map with MCTS NEXT</a>
Distance from previous stop	0.3 miles, NB LOVERS LANE & 5400 N #2727 (LAYOVER) (43.116097, -88.055505)
Distance to following stop	0.4 miles, SB N124 & CUSTER #2827 (43.115222, -88.065780)
Parking Impacts	None
Mobility/Accessibility	Currently no boarding pad, passengers board in grass terrace. Seek to coordinate future upgrades as resources become available. All MCTS buses are equipped with a kneeling feature and ADA ramp, and may board at adjacent driveway. MCTS operators are trained to assist passengers boarding with a mobility device.
Pedestrian Safety	
County Supervisor	Russell Antonio Goodwin, Sr., Dist. 18
City Alder	Nikiya Dodd, Dist. 5

Additional Information/Comments

MCDOT right-of-way
--------------------

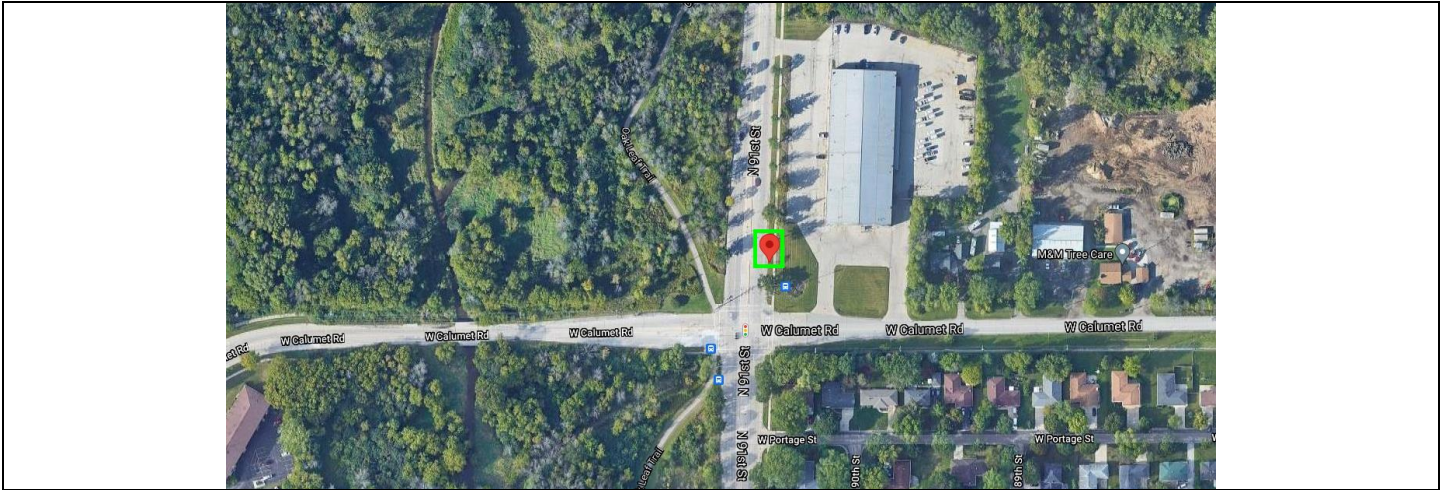
Bus Stop ID #9710 | N91 & GOOD HOPE NORTHBOUND (FARSIDE) #9710 (43.149527, -88.025007)



Route(s)	Route 92
Reason for New Location	New routing for MCTS Next <a href="#">Fall 2021 Current System Map with MCTS NEXT</a>
Distance from previous stop	0.2 miles, NB 91ST STREET & ROCHELLE (NEARSIDE) #1006 (43.146743, -88.025065)
Distance to following stop	0.5 miles, NB N91 & CALUMET (FARSIDE) #9711 (43.156255, -88.024727)
Parking Impacts	None
Mobility/Accessibility	Currently no boarding pad, passengers board in grass terrace. Seek to coordinate future upgrades as resources become available. All MCTS buses are equipped with a kneeling feature and ADA ramp, and may board in driveway to the north. MCTS operators are trained to assist passengers boarding with a mobility device.
Pedestrian Safety	Access to sidewalk, signalized crosswalk
County Supervisor	Russell Antonio Goodwin, Sr., Dist. 18
City Alderperson	Chantia Lewis, Dist. 9

Additional Information/Comments

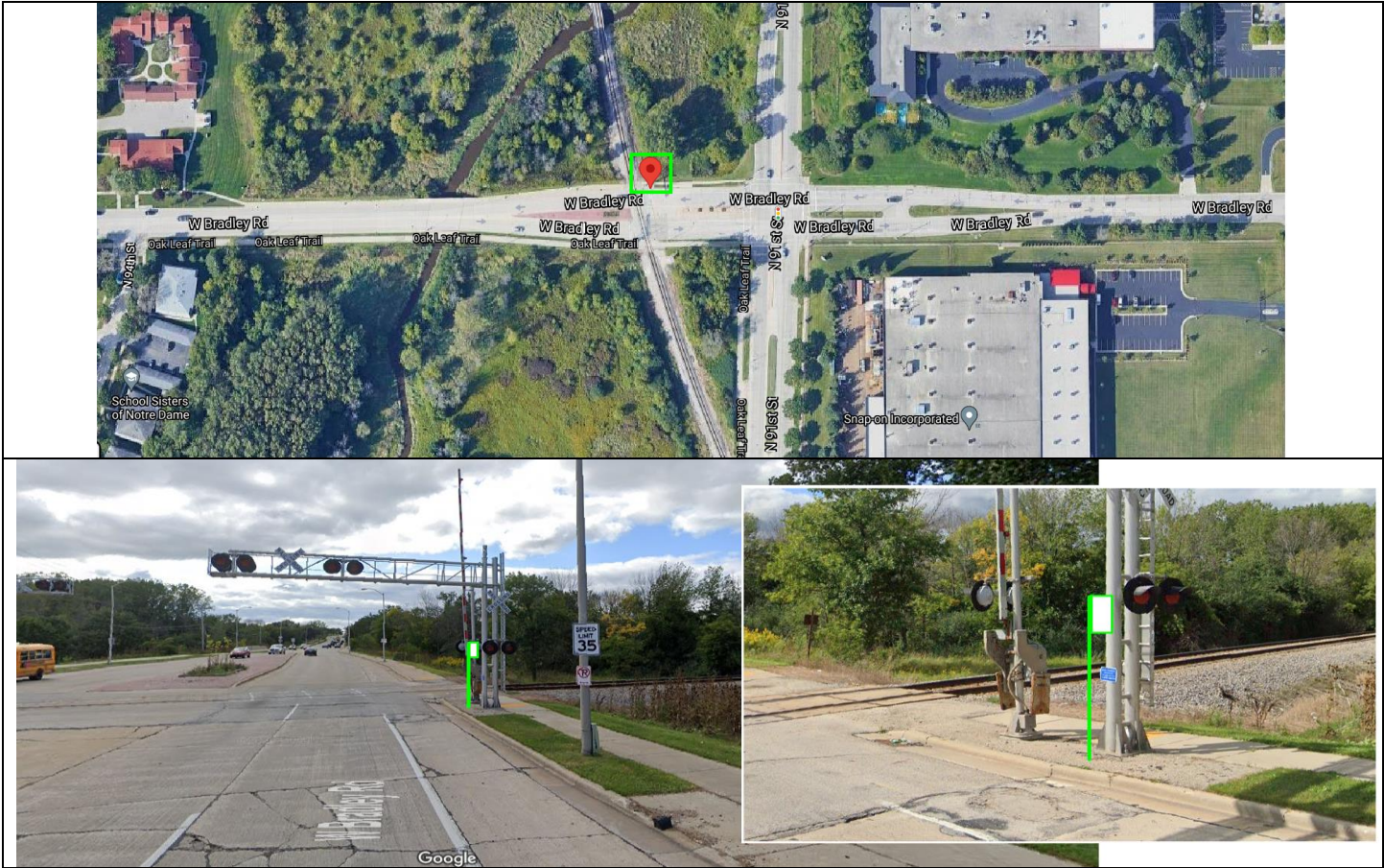
Bus Stop ID #9711	N91 & CALUMET NORTHBOUND (FARSIDE) #9711 (43.156255, -88.024727)
-------------------	--



Route(s)	Route 92
Reason for New Location	New routing for MCTS Next <a href="#">Fall 2021 Current System Map with MCTS NEXT</a>
Distance from previous stop	0.5 miles, NB N91 & GOOD HOPE (FARSIDE) #9710 (43.149527, -88.025007)
Distance to following stop	0.5 miles, WB BRADLEY & N91 (FARSIDE) #9712 (43.163303, -88.025260)
Parking Impacts	None
Mobility/Accessibility	Currently no boarding pad, passengers board in grass terrace. Seek to coordinate future upgrades as resources become available. All MCTS buses are equipped with a kneeling feature and ADA ramp, and may board in driveway to the north. MCTS operators are trained to assist passengers boarding with a mobility device.
Pedestrian Safety	Access to sidewalk, signalized crosswalk
County Supervisor	Russell Antonio Goodwin, Sr., Dist. 18
City Alderperson	Chantia Lewis, Dist. 9

Additional Information/Comments

Bus Stop ID #9712 | BRADLEY & N91 WESTBOUND (FARSIDE) #9712 (43.163303, -88.025358)



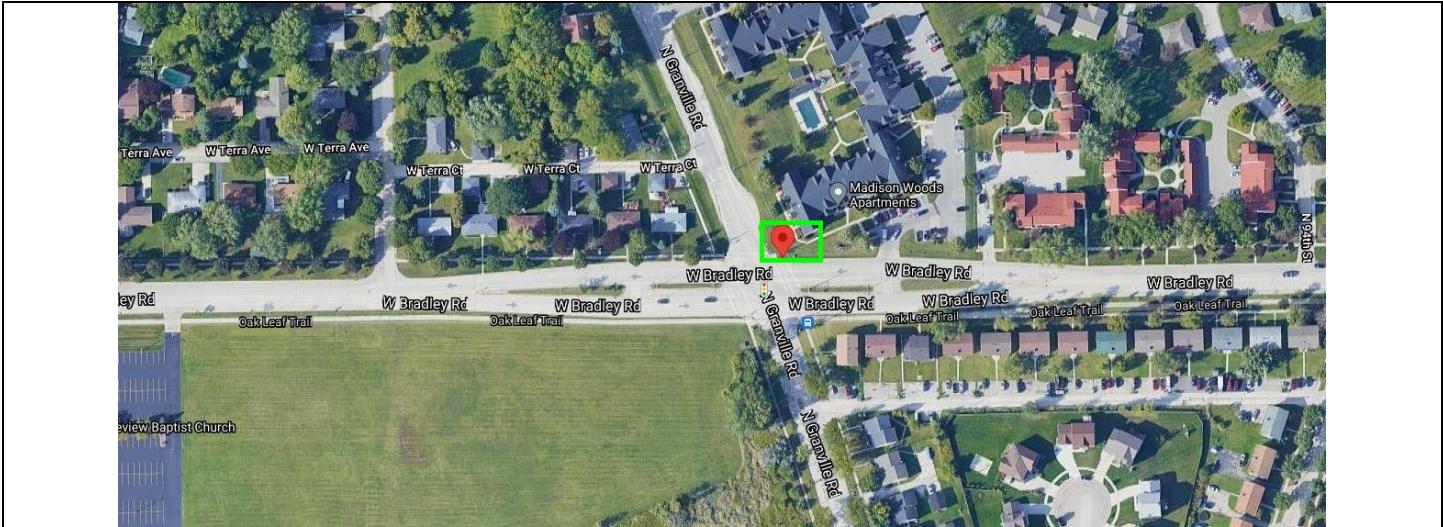
Route(s)	Route 92
Reason for New Location	New routing for MCTS Next <a href="#">Fall 2021 Current System Map with MCTS NEXT</a>
Distance from previous stop	0.5 miles, NB N91 & CALUMET (FARSIDE) #9711 (43.156255, -88.024727)
Distance to following stop	0.3 miles, WB BRADLEY & GRANVILLE (NEARSIDE) #9713 (43.163219, -88.031970)
Parking Impacts	None
Mobility/Accessibility	Clear area functions as boarding pad connecting to sidewalk.
Pedestrian Safety	Access to sidewalk, signalized crosswalk
County Supervisor	Russell Antonio Goodwin, Sr., Dist. 18
City Alderperson	Chantia Lewis, Dist. 9

**Additional Information/Comments**

MCTS: Buses are required to stop for RR tracks for safety check at distance of 15'-50' (Wis SS 346.45(1)(a)). This location is ~25' from RR tracks. Placing bus stop within this range provides dual purpose for stopping: safety check and passenger boarding.



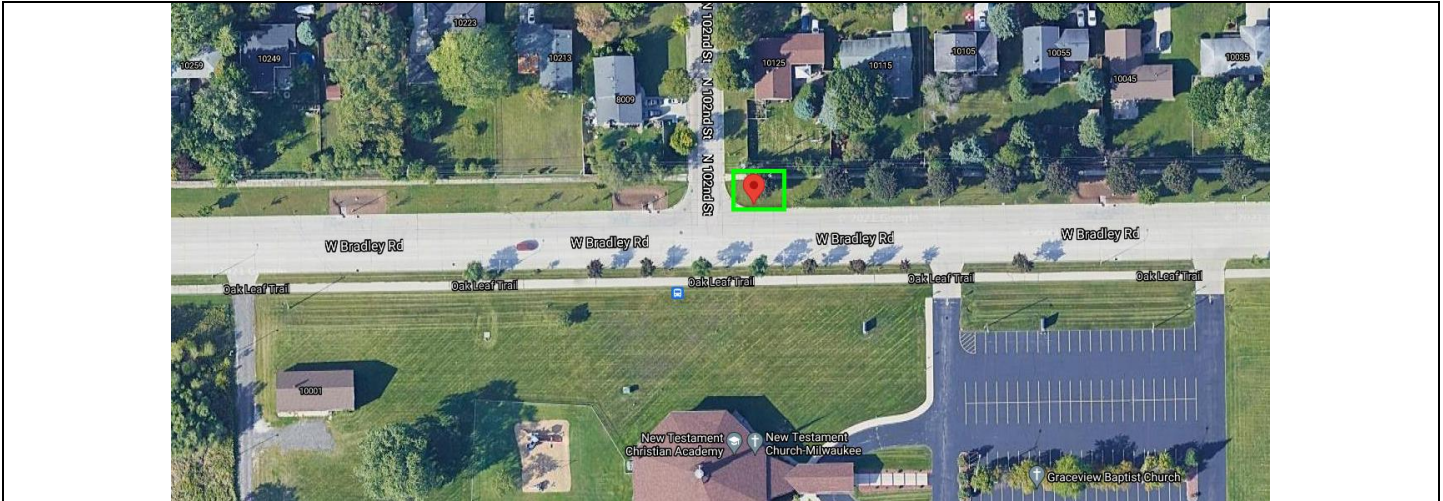
Bus Stop ID #9713    BRADLEY & GRANVILLE WESTBOUND (NEARSIDE) #9713 (43.163219, -88.031970)



Route(s)	Route 92
Reason for New Location	New routing for MCTS Next <a href="#">Fall 2021 Current System Map with MCTS NEXT</a>
Distance from previous stop	0.3 miles, WB BRADLEY & N91 (FARSIDE) #9712 (43.163303, -88.025260)
Distance to following stop	0.3 miles, WB BRADLEY & N102 (NEARSIDE) #9714 (43.163109, -88.037005)
Parking Impacts	None
Mobility/Accessibility	Currently no boarding pad, passengers board in grass. Seek to coordinate future upgrades as resources become available.
Pedestrian Safety	No sidewalk. There is a signalized intersection and crosswalk.
County Supervisor	Russell Antonio Goodwin, Sr., Dist. 18
City Alderperson	Chantia Lewis, Dist. 9

Additional Information/Comments

Bus Stop ID #9714 | BRADLEY & N102 WESTBOUND (NEAR SIDE) #9714 (43.163109, -88.037005)



Route(s)	Route 92
Reason for New Location	New routing for MCTS Next <a href="#">Fall 2021 Current System Map with MCTS NEXT</a>
Distance from previous stop	0.3 miles, WB BRADLEY & GRANVILLE (NEAR) #9713 (43.163219, -88.031970)
Distance to following stop	0.3 miles, WB BRADLEY & N105 (NEAR) #9715 (43.163063, -88.042303)
Parking Impacts	
Mobility/Accessibility	Currently no boarding pad, passengers board in grass. Seek to coordinate future upgrades as resources become available. All MCTS buses are equipped with a kneeling feature and ADA ramp, and may board at street level. MCTS operators are trained to assist passengers boarding with a mobility device.
Pedestrian Safety	
County Supervisor	Russell Antonio Goodwin, Sr., Dist. 18
City Alderperson	Chantia Lewis, Dist. 9

Additional Information/Comments

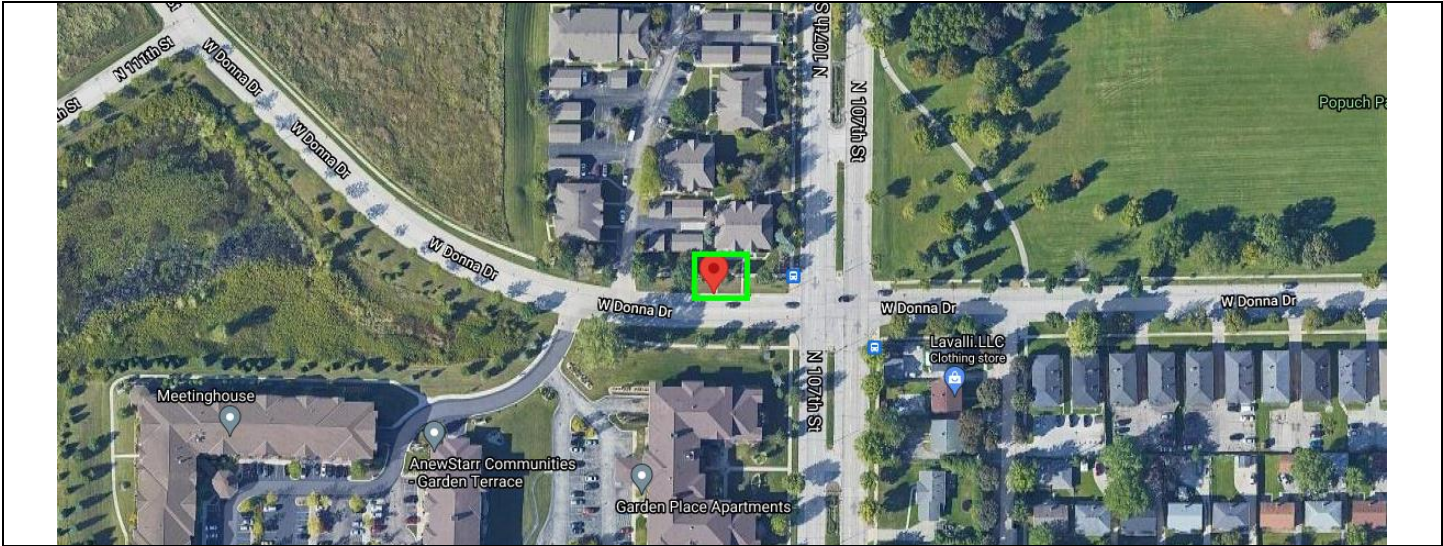
Bus Stop ID #9715 | BRADLEY & N105 WESTBOUND (NEARSIDE) #9715 (43.163063, -88.042303)



Route(s)	Route 92
Reason for New Location	New routing for MCTS Next <a href="#">Fall 2021 Current System Map with MCTS NEXT</a>
Distance from previous stop	0.3 miles, WB BRADLEY & N102 (NEARSIDE) #9714 (43.163109, -88.037005)
Distance to following stop	0.3 miles, NB 107TH STREET & 8200 N. (MID-BLOCK) #9537 (43.165800, -88.044222)
Parking Impacts	None
Mobility/Accessibility	Currently no boarding pad, passengers board in grass. Seek to coordinate future upgrades as resources become available. All MCTS buses are equipped with a kneeling feature and ADA ramp, and may board at street level. MCTS operators are trained to assist passengers boarding with a mobility device.
Pedestrian Safety	
County Supervisor	Russell Antonio Goodwin, Sr., Dist. 18
City Alderperson	Chantia Lewis, Dist. 9

Additional Information/Comments

Bus Stop ID #9716    DONNA & N107 WESTBOUND (FARSIDE) #9716 (43.171259, -88.044899)



Route(s)	Route 92
Reason for New Location	New routing for MCTS Next <a href="#">Fall 2021 Current System Map with MCTS NEXT</a>
Distance from previous stop	0.2 miles, NB 107TH STREET & VILLA (NEAR) #9538 (43.168500, -88.044172)
Distance to following stop	0.3 miles, NB PFEIL & HEATHER (NEAR) #9717 (43.174677, -88.047707)
Parking Impacts	Request NO PARKING BUS STOP: N/S W. Donna Dr. from N. 107 <sup>th</sup> St. to west 130.'
Mobility/Accessibility	Passengers board in carriage walk, 36" wide only. Functional but not ADA compliant. Seek to coordinate future upgrades as opportunities become available.
Pedestrian Safety	
County Supervisor	Russell Antonio Goodwin, Sr., Dist. 18
City Alderperson	Chantia Lewis, Dist. 9

Additional Information/Comments

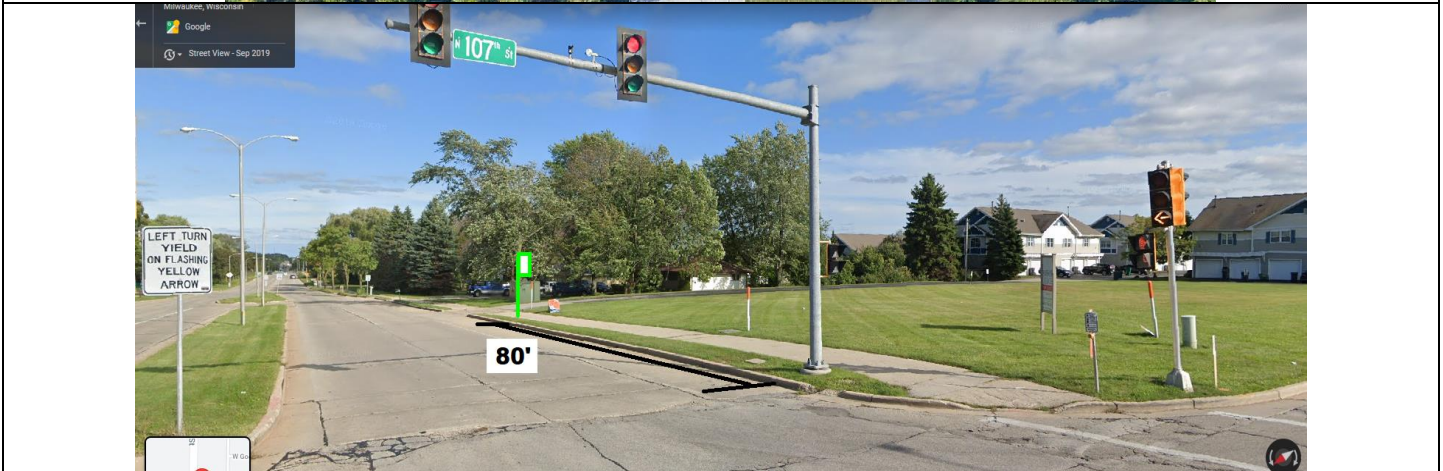
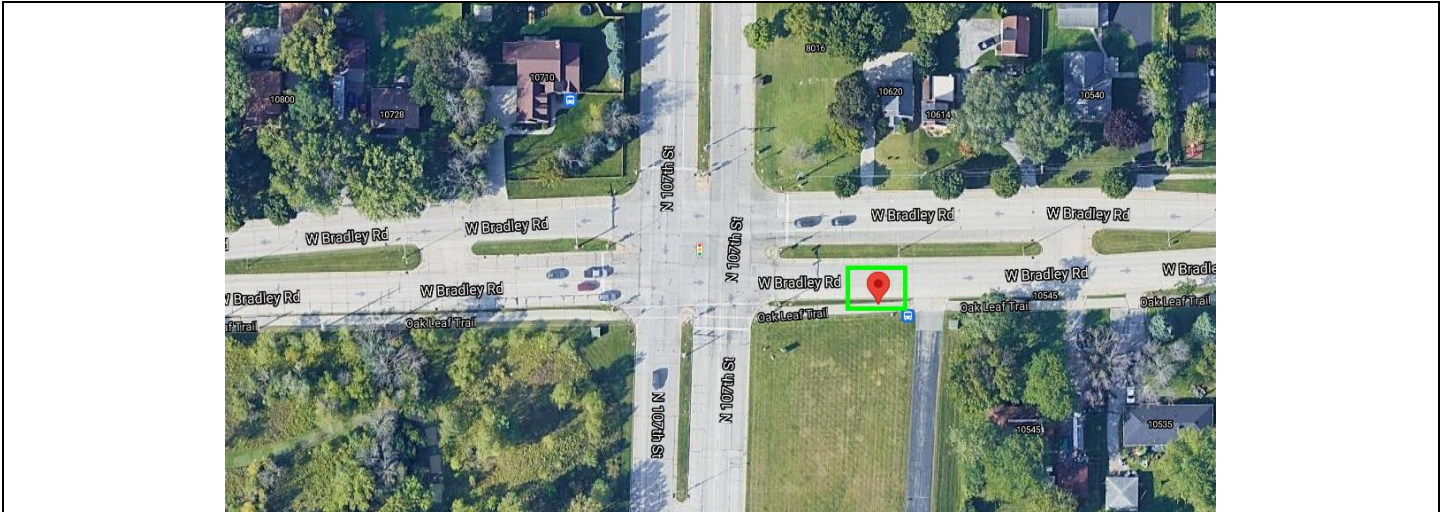
Bus Stop ID #9717    PFEIL & HEATHER NORTHBOUND (NEAR SIDE) #9717 (43.174677, -88.047707)



Route(s)	Route 92
Reason for New Location	New routing for MCTS Next <a href="#">Fall 2021 Current System Map with MCTS NEXT</a>
Distance from previous stop	0.3 miles, WB DONNA & N107 (FAR) #9716 (43.171259, -88.044899)
Distance to following stop	0.1 miles, EB HEATHER & 107TH STREET (NEAR) #9558 (43.174788, -88.045424)
Parking Impacts	Request NO PARKING BUS STOP: E/S N. Pfeil St. from W. Heather St. to south 90.'
Mobility/Accessibility	Currently no boarding pad, passengers board in grass terrace. Seek to coordinate future upgrades as resources become available. All MCTS buses are equipped with a kneeling feature and ADA ramp, and may board at street level in driveway to the south. MCTS operators are trained to assist passengers boarding with a mobility device.
Pedestrian Safety	
County Supervisor	Russell Antonio Goodwin, Sr., Dist. 18
City Alderperson	Chantia Lewis, Dist. 9

Additional Information/Comments

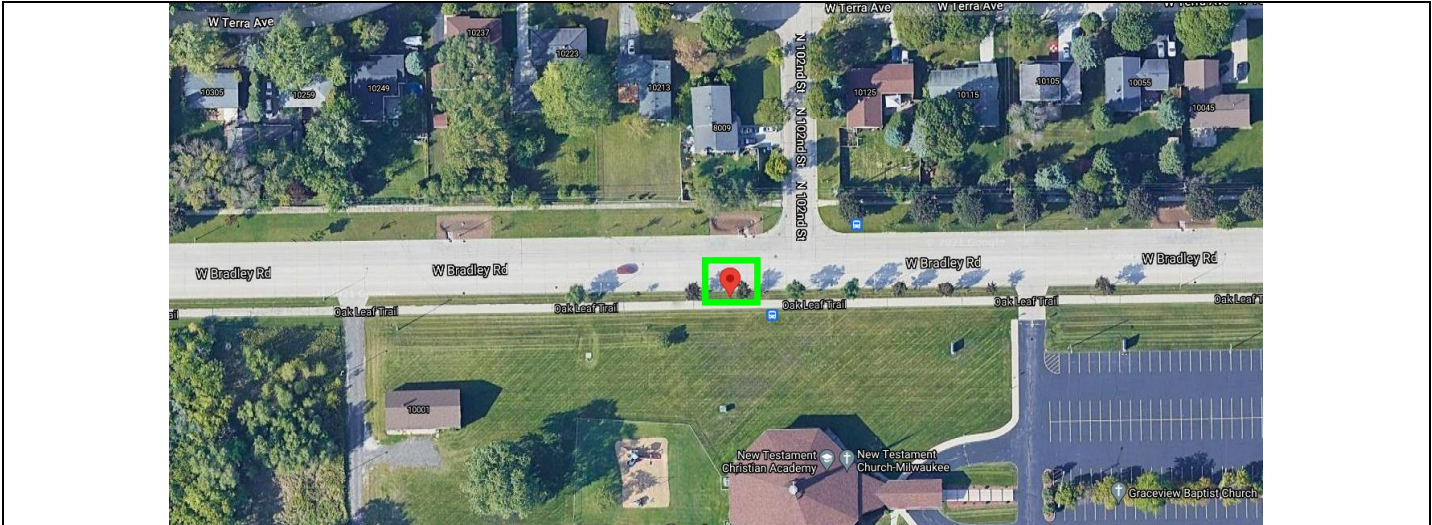
Bus Stop ID #9720 BRADLEY & N107 EASTBOUND (FARSIDE) #9720 (43.162827, -88.043909)



Route(s)	Route 92
Reason for New Location	New routing for MCTS Next <a href="#">Fall 2021 Current System Map with MCTS NEXT</a>
Distance from previous stop	0.2 miles, SB 107TH STREET & 8199 N. #8044 (43.165817, -88.044586)
Distance to following stop	0.3 miles, EB BRADLEY & N107 (FAR) #9720 (43.162827, -88.043909)
Parking Impacts	None
Mobility/Accessibility	Currently no boarding pad, passengers board in grass terrace. Seek to coordinate future upgrades as resources become available. All MCTS buses are equipped with a kneeling feature and ADA ramp. ADA ramp can bridge distance of 42"-47." This grass terrace is 36" deep from curb face; ramp clears. MCTS operators are trained to assist passengers boarding with a mobility device.
Pedestrian Safety	Access to sidewalk, signalized crosswalk
County Supervisor	Russell Antonio Goodwin, Sr., Dist. 18
City Alderperson	Chantia Lewis, Dist. 9

Additional Information/Comments

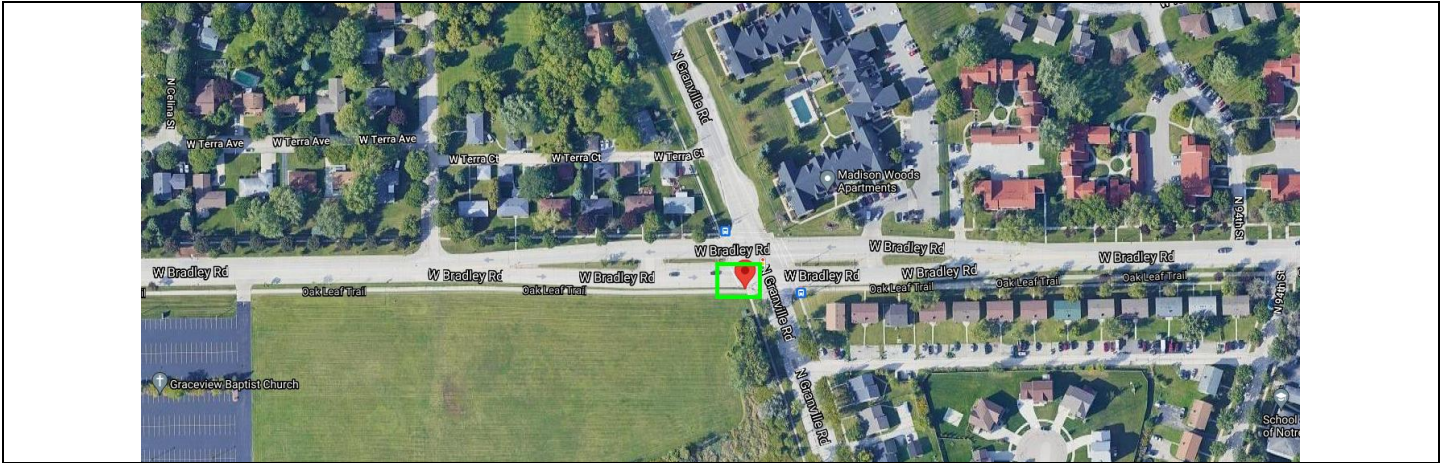
Bus Stop ID #7612	BRADLEY & N102 EASTBOUND (NEARSIDE) #7612 (43.162946, -88.037391)
-------------------	---



Route(s)	Route 92
Reason for New Location	New routing for MCTS Next <a href="#">Fall 2021 Current System Map with MCTS NEXT</a>
Distance from previous stop	0.3 miles, EB BRADLEY & N107 (FAR) #9720 (43.162827, -88.043909)
Distance to following stop	0.3 miles, EB BRADLEY & GRANVILLE (NEAR) #9722 (43.162961, -88.032199)
Parking Impacts	None
Mobility/Accessibility	Currently no boarding pad, passengers board in grass terrace. Seek to coordinate future upgrades as resources become available. All MCTS buses are equipped with a kneeling feature and ADA ramp, and may board at street level in driveway to the east. MCTS operators are trained to assist passengers boarding with a mobility device.
Pedestrian Safety	
County Supervisor	Russell Antonio Goodwin, Sr., Dist. 18
City Alderperson	Chantia Lewis, Dist. 9

Additional Information/Comments

Bus Stop ID #9722 BRADLEY & GRANVILLE EASTBOUND (NEAR SIDE) #9722 (43.162961, -88.032199)

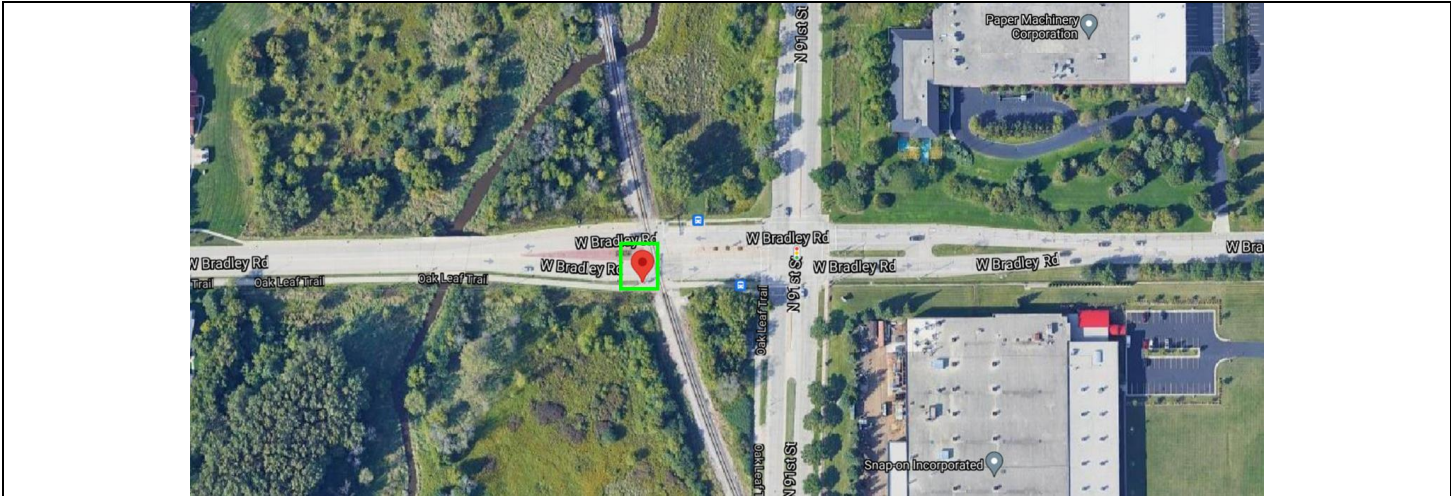


Route(s)	Route 92
Reason for New Location	New routing for MCTS Next <a href="#">Fall 2021 Current System Map with MCTS NEXT</a>
Distance from previous stop	0.3 miles, EB BRADLEY & GRANVILLE (NEAR) #9722 (43.162961, -88.032199)
Distance to following stop	0.4 miles, EB BRADLEY & N91 (NEAR) #9723 (43.163036, -88.024835)
Parking Impacts	
Mobility/Accessibility	Currently no boarding pad, passengers board in grass terrace. Seek to coordinate future upgrades as resources become available. All MCTS buses are equipped with a kneeling feature and ADA ramp. ADA ramp can bridge distance of 42"-47." This grass terrace is 36" deep from curb face; ramp clears. MCTS operators are trained to assist passengers boarding with a mobility device.
Pedestrian Safety	Access to sidewalk, signalized crosswalk
County Supervisor	Russell Antonio Goodwin, Sr., Dist. 18
City Alderperson	Chantia Lewis, Dist. 9

Additional Information/Comments



Bus Stop ID #9723    BRADLEY & N91 EASTBOUND (NEAR) #9723 (43.163055, - 88.025488)

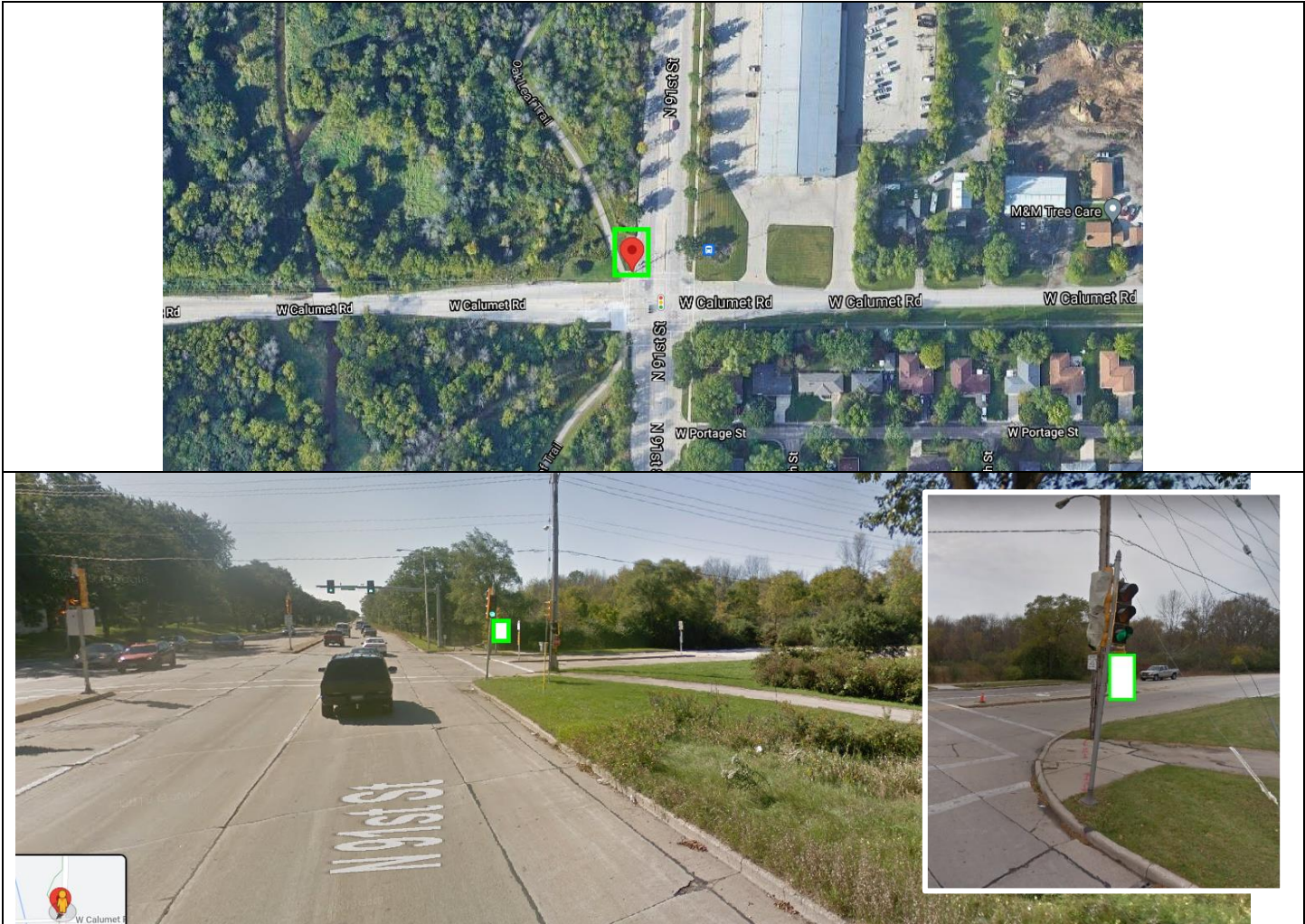


Route(s)	Route 92
Reason for New Location	New routing for MCTS Next <a href="#">Fall 2021 Current System Map with MCTS NEXT</a>
Distance from previous stop	0.3 miles, EB BRADLEY & GRANVILLE (NEAR) #9722 (43.162961, -88.032199)
Distance to following stop	0.6 miles, SB N91 & CALUMET (NEAR) #9724 (43.156043, -88.025056)
Parking Impacts	None
Mobility/Accessibility	Clear area functions as boarding pad connecting to sidewalk.
Pedestrian Safety	
County Supervisor	Russell Antonio Goodwin, Sr., Dist. 18
City Alderperson	Chantia Lewis, Dist. 9

**Additional Information/Comments**

Buses are required to stop for RR tracks for safety check at distance of 15'-50' (Wis SS 346.45(1)(a)). This location is ~25' from RR tracks. Placing bus stop within this range provides dual purpose for stopping: safety check and passenger boarding.

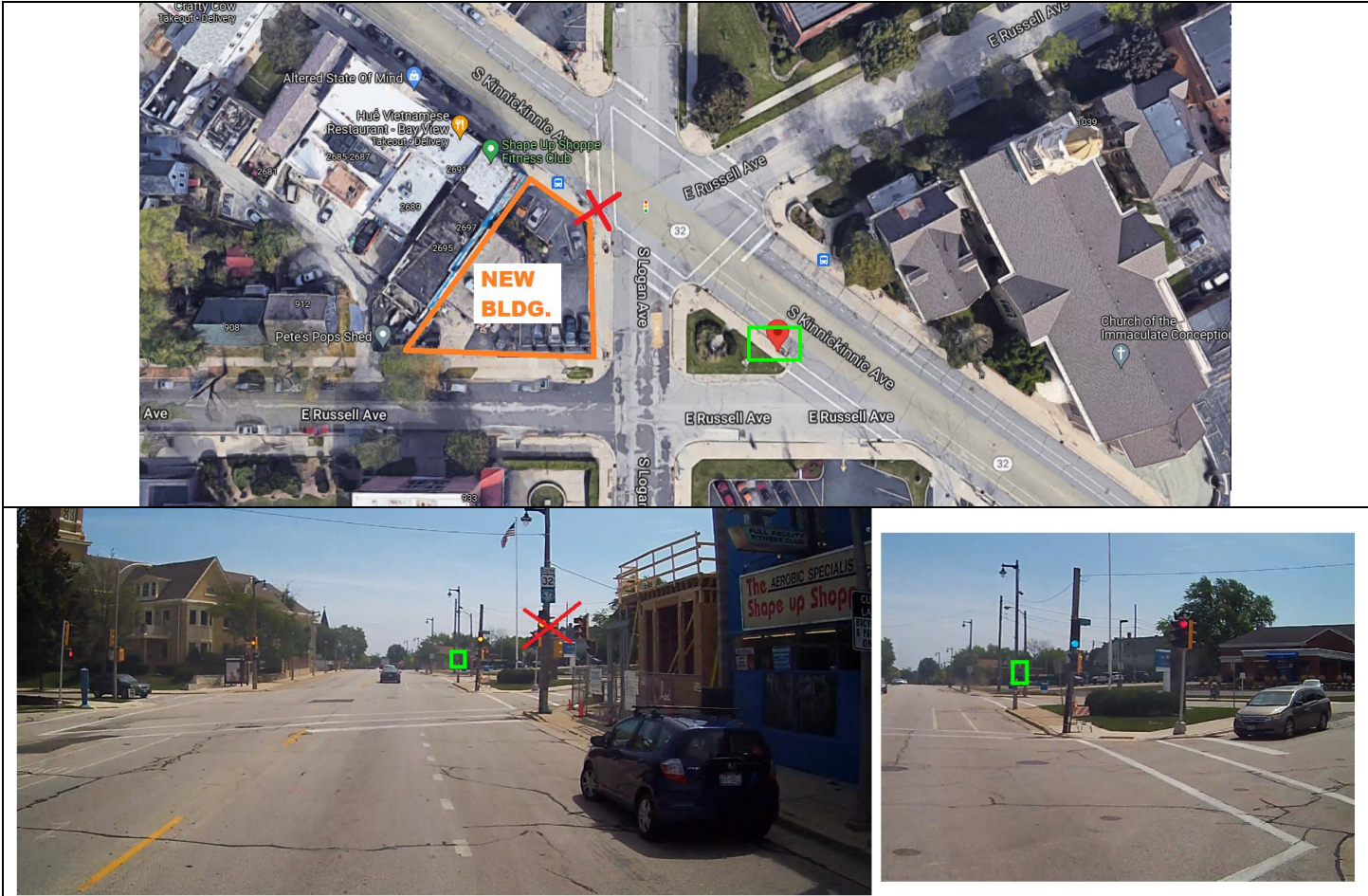
Bus Stop ID #9724 | N91 & CALUMET SOUTHBOUND (NEAR) #9724 (43.156043, -88.025056)



Route(s)	Route 92
Reason for New Location	New routing for MCTS Next <a href="#">Fall 2021 Current System Map with MCTS NEXT</a>
Distance from previous stop	0.6 miles, EB BRADLEY & N91 (NEAR) #9723 (43.163054, -88.025011)
Distance to following stop	0.3 miles, SB N91 & DOGWOOD (NEAR) #9110 (43.152789, -88.025126)
Parking Impacts	None
Mobility/Accessibility	Currently no boarding pad, passengers board in grass terrace. Seek to coordinate future upgrades as resources become available. There is a portion of concrete curb/walk at radius that can function as a boarding pad with use of ADA ramp; not ADA compliant but functional.
Pedestrian Safety	Signalized intersection and crosswalk
County Supervisor	Russell Antonio Goodwin, Sr., Dist. 18
City Alderperson	Chantia Lewis, Dist. 9

Additional Information/Comments

BUS STOP ID #1432	KINNICKINNIC & LOGAN SOUTHBOUND (FARSIDE) #1432 (42.995747, -87.896507)
-------------------	---



Route(s)	Route 15
Reason for New Location	Business owner & developer on SWC KK & Logan request to relocate bus stop from nearside (in front of their businesses) to farside (away from); to recoup parking.
Distance from previous stop	0.2 miles, SB Kinnickinnic & Potter #1431 (42.997087, -87.898987)
Distance to following stop	< 0.1 miles (290 ft) SB Kinnickinnic & Herman #1433 (42.995288, -87.895624). Note: This bus stop serves as a layover and transfer point for the Route 52, giving exception to the short distance.
Parking Impacts	Proposed farside location currently signed NO PARKING ANYTIME. This would free up vacated nearside location for parking.
Mobility/Accessibility	Walk is 7.5' deep.
Pedestrian Safety	Signalized intersection and crosswalk
County Supervisor	Ryan Clancy, Dist. 4
City Alder	Marina Dimitrijevic, Dist. 14

Additional Information/Comments