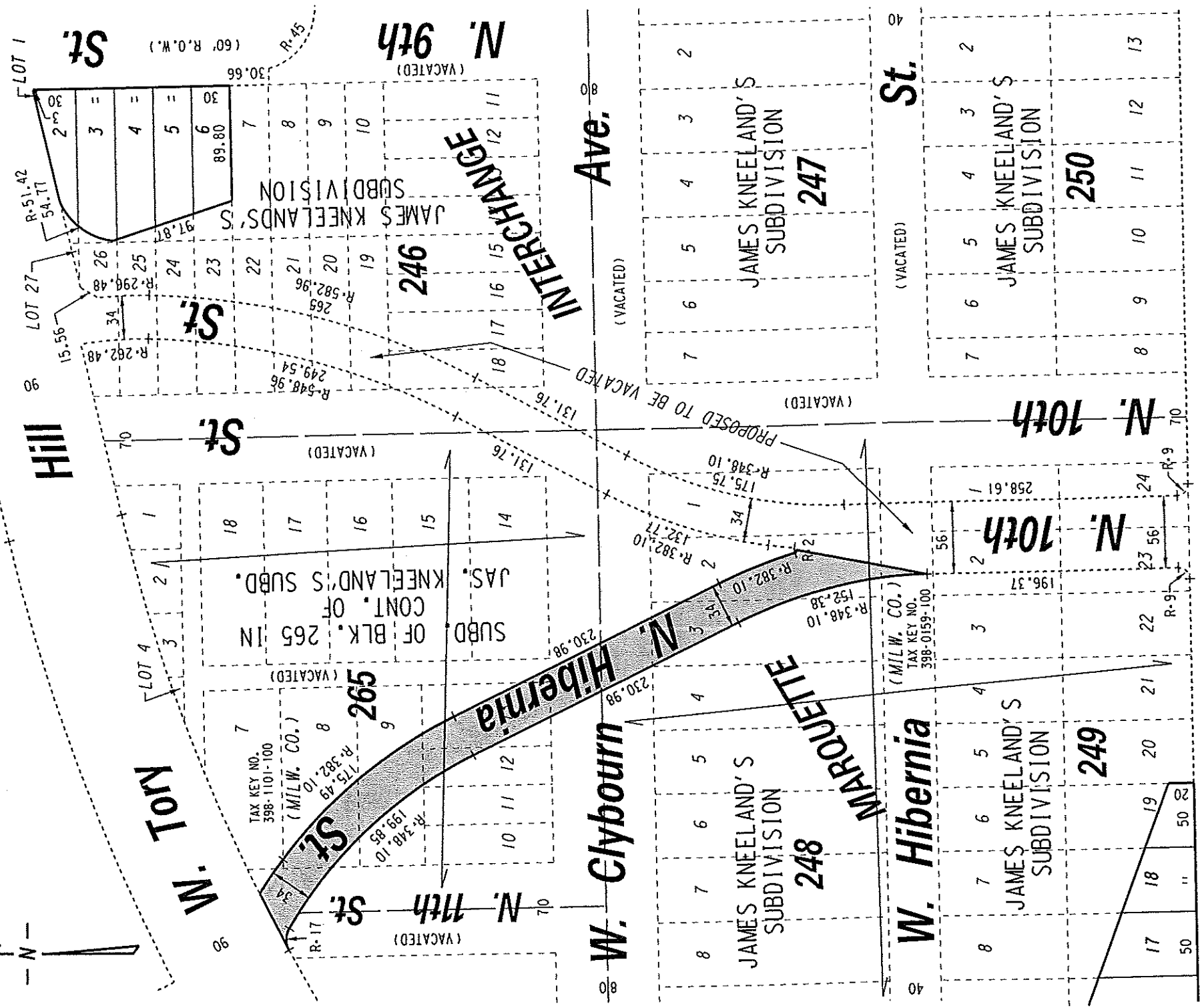


S.W. 1/4 SEC. 29, T.7N., R.22E.

398



PUBLIC STREET
PROPOSED TO
BE VACATED

W. St. Paul

Ave.

EXHIBIT "A" FILE NO. 110450

INFRASTRUCTURE SERVICES DIVISION

MILWAUKEE, WISCONSIN

ASSIGNED TO: W.E. FUCHS
 DRAWN BY: W.E.F.
 PROJECT/GRANT NO.: WK52337301
 APPROVED BY:

CH'K'D. BY: W.E. FUCHS
 DATE: OCT. 26, 2011
 SCALE: 1" = 100'

Marcia Cornell
 CENTRAL DRAFTING & RECORDS MANAGER
 CIVIL ENGINEER