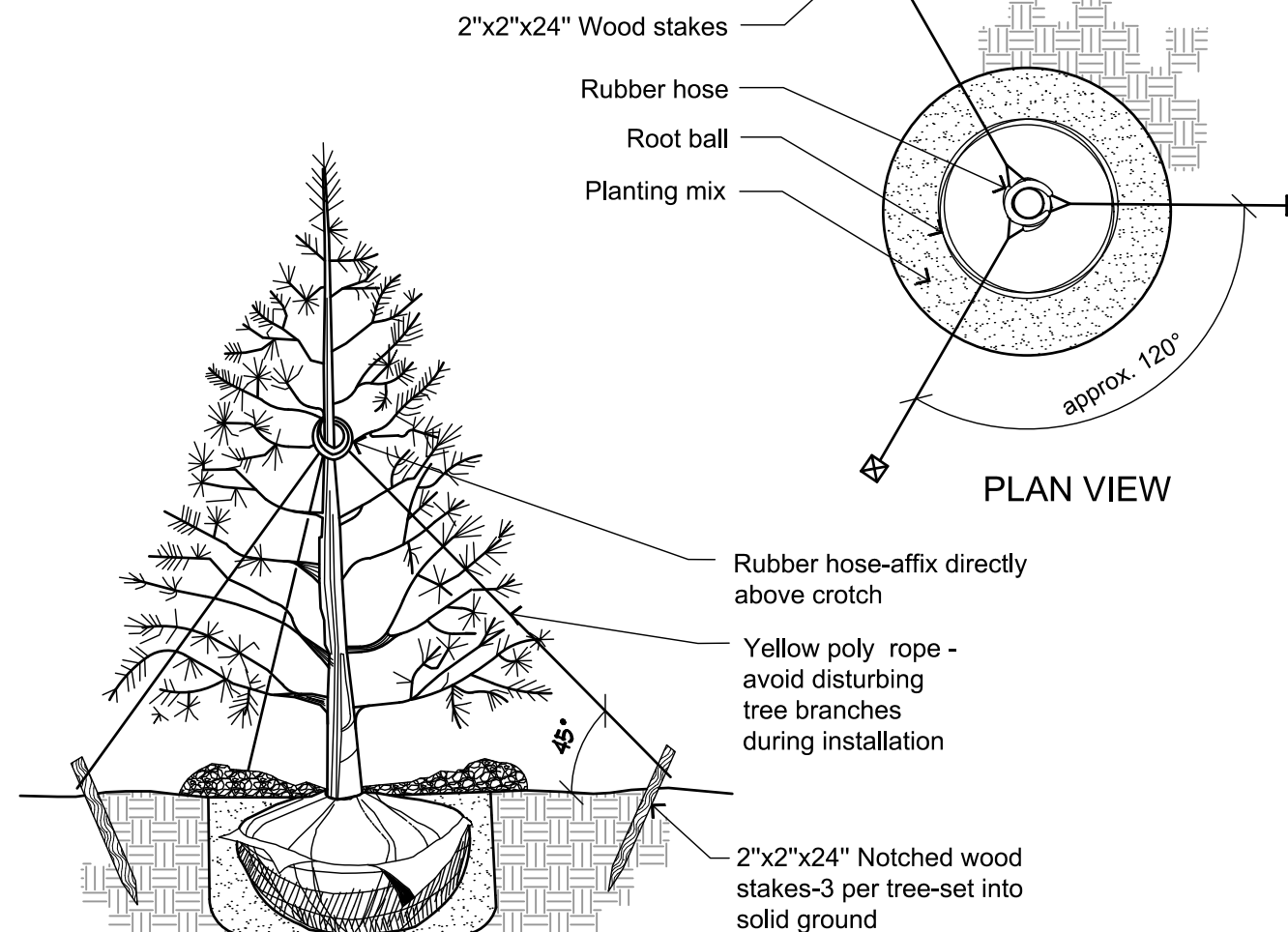
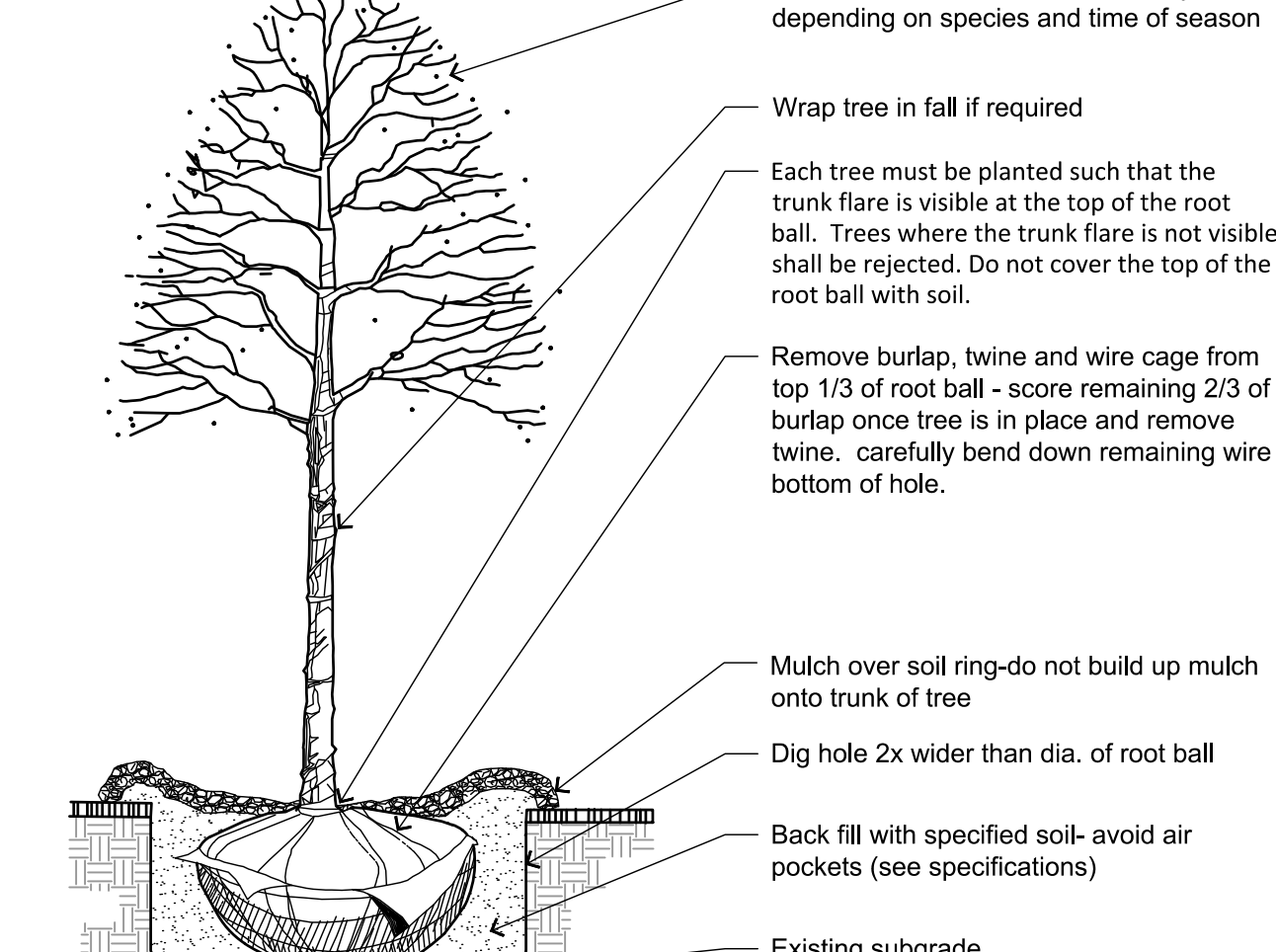


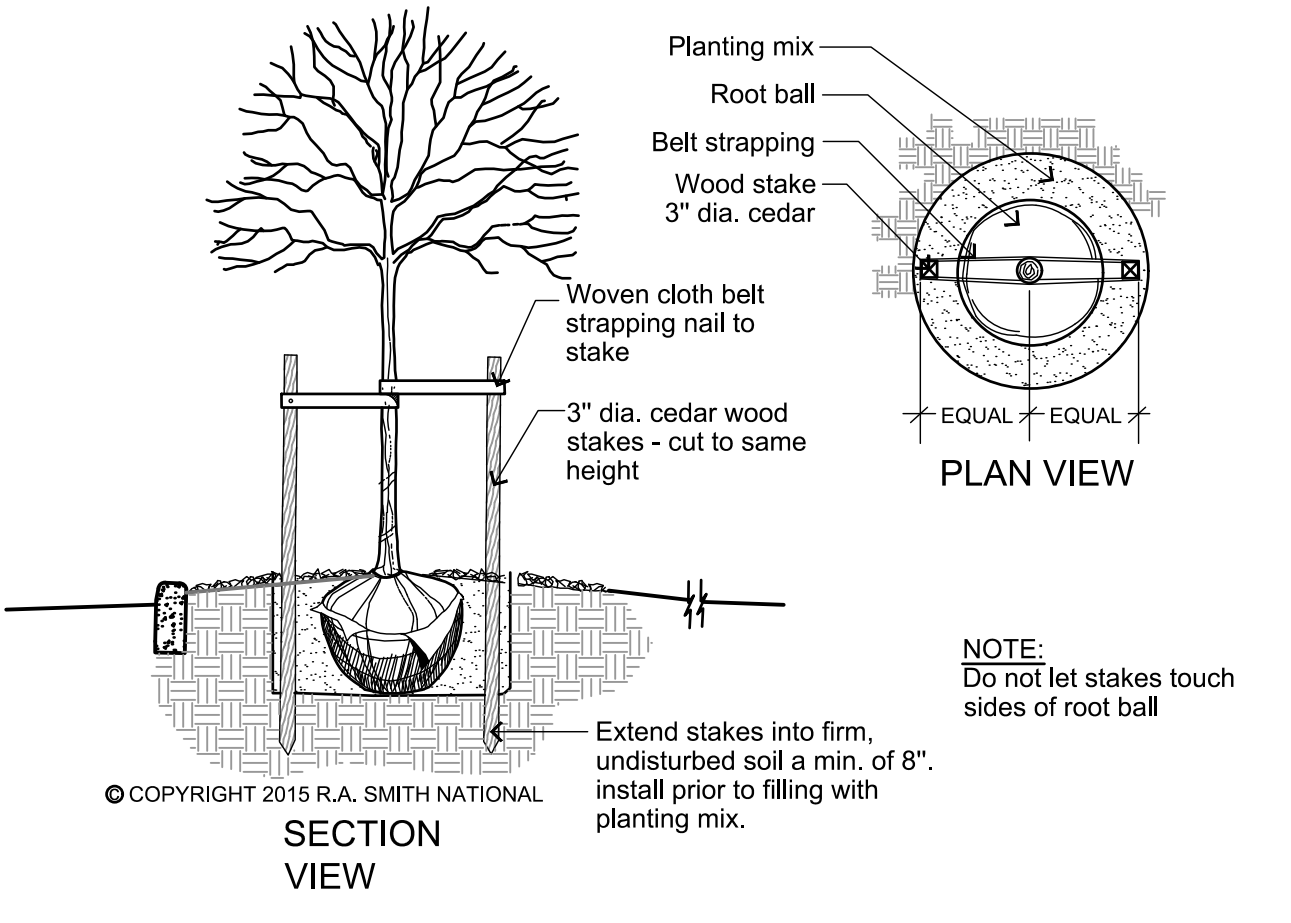
1 EVERGREEN TREE PLANTING DETAIL
NOT TO SCALE



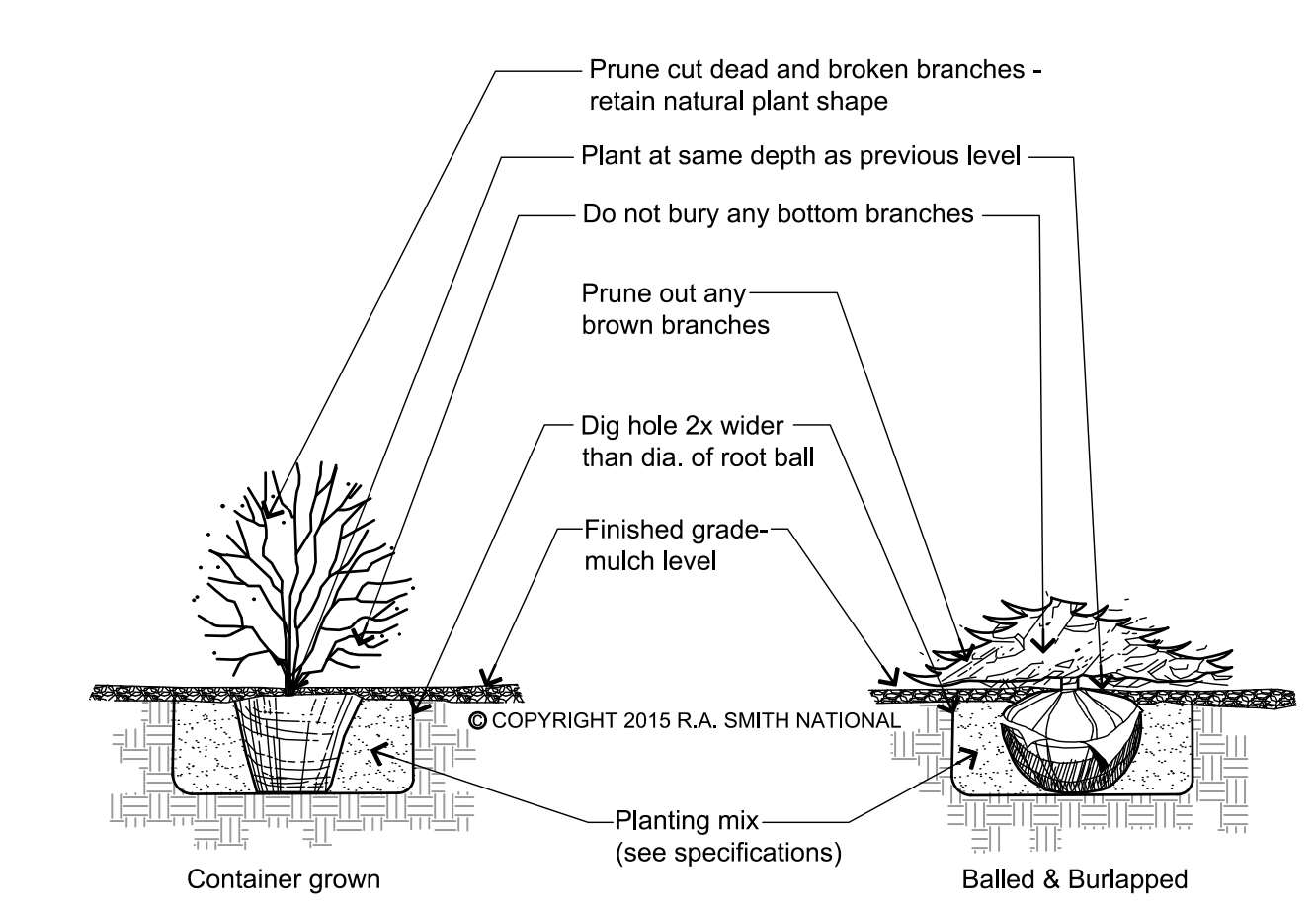
2 EVERGREEN STAKING DETAIL
NOT TO SCALE



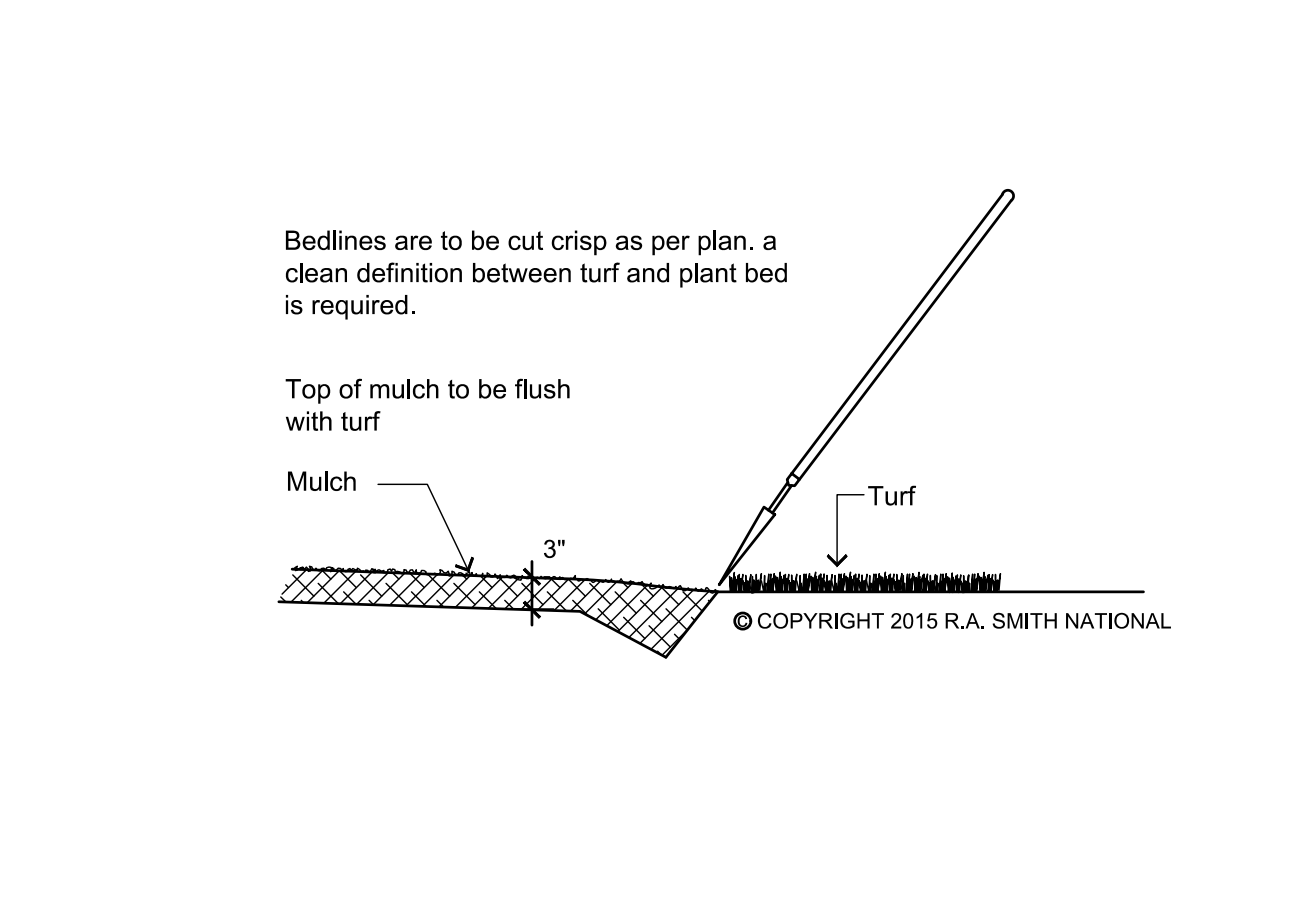
3 DECIDUOUS TREE PLANTING DETAIL
NOT TO SCALE



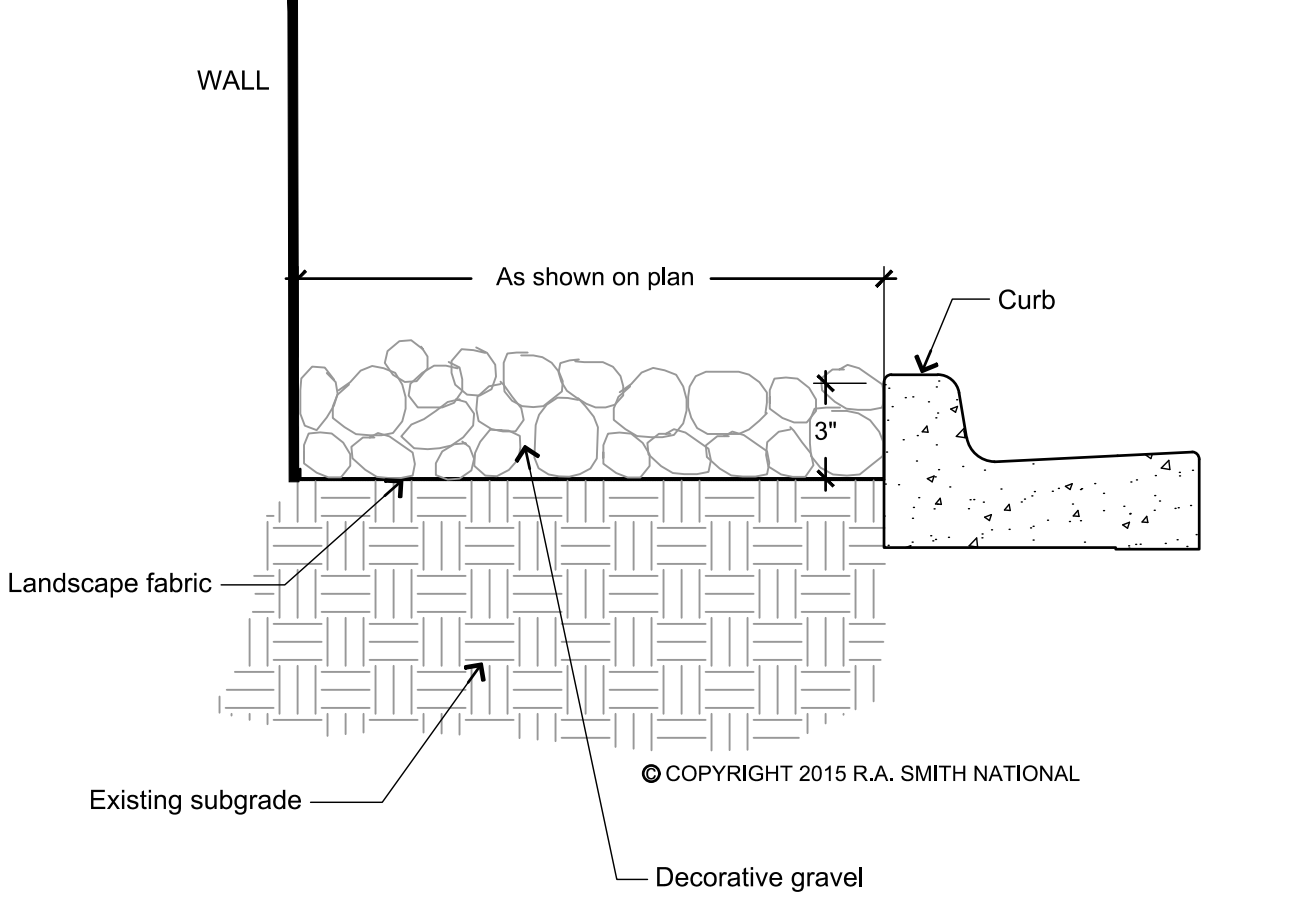
4 DECIDUOUS TREE STAKING FOR RESTRICTED AREAS
NOT TO SCALE



5 SHRUB PLANTING DETAIL
NOT TO SCALE



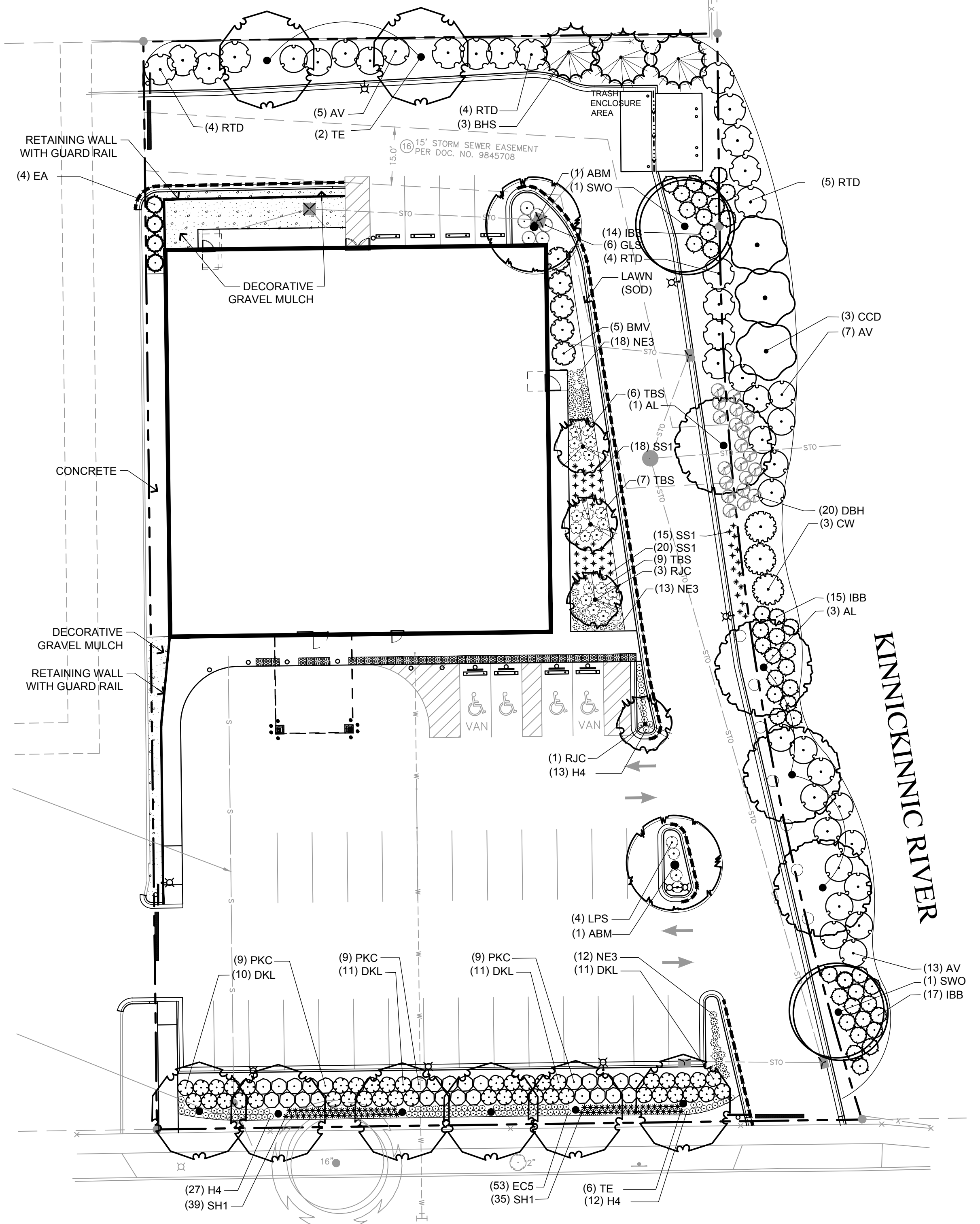
6 SHOVEL CUT PLANT BED EDGING DETAIL
NOT TO SCALE



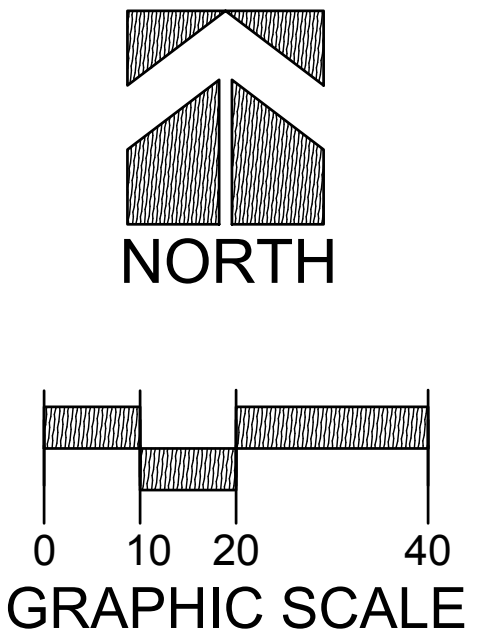
7 GRAVEL MAINTENANCE STRIP DETAIL
NOT TO SCALE

GENERAL LANDSCAPE NOTES

- Contractor responsible for contacting public and private underground utility locating service to have site marked prior to any digging or earthwork.
- Contractor to verify all plant quantities shown on plant list and verify with plan. Report any discrepancies immediately to general contractor.
- All plantings shall comply with standards as described in American Standard of Nursery Stock - ANSI Z60.1 (latest version). General contractor or owner's representative reserves the right to inspect and potentially reject any plants that are inferior, compromised, undersized, diseased, improperly transported, installed incorrectly or damaged.
- Any potential plant substitutions must be submitted in writing and approved by the general contractor or owner's representative. All plants must be installed as per sizes shown on plant material schedule, unless approved by general contractor or owner's representative.
- Topsoil should be placed to within 3" of finish grade by general grading contractor during rough grading operations. All parking lot islands and planting beds to be backfilled with topsoil to a minimum depth of 18" and cover all planting islands and beds a minimum of 6" to provide proper drainage (unless otherwise specified) by grading contractor to insure long term plant health.
- The landscape contractor to be responsible for the fine grading of all landscaped areas. A minimum depth of 3" of blended, prepared and non-compacted topsoil is required for all seeded areas. Finished landscaped areas to be smooth, uniform and provide positive drainage away from all structures and pavement.
- Tree planting (see planting detail):
Plant all trees slightly higher than finished grade at root flare. Remove excess soil from top of root ball, if needed. Scarify side walls of tree pit prior to installation. Remove and discard non-biodegradable ball wrapping and support wire. Remove biodegradable burlap and wire cage (if applicable) from top one-third of rootball. Carefully bend remaining wire down to the bottom of hole once the tree has been placed into the hole and will no longer be moved. Score the remaining two-thirds of burlap and remove twine. Backfill pit with 80% existing soil removed from excavation and 20% plant starter mix blended prior to backfilling holes. Discard any gravel, heavy clay or stones. Avoid any air pockets and do not tamp soil down. When hole is two-thirds full, trees shall be watered thoroughly, and water left to soak in before proceeding.
Provide a 3" deep, 4 ft. diameter shredded hardwood bark mulch ring around all lawn trees. Do not build up any mulch onto trunk of any tree. Trees that are installed incorrectly will be replaced at the time and expense of the landscape contractor. Stake trees according to the staking detail.
- Shrub planting: all shrubs to be pocket planted with a 50/50 mix of plant starter and topsoil. Install topsoil into all plant beds as needed to achieve proper grade and replace undesirable soil (see planting detail). Remove all excessive gravel, clay and stones from plant beds prior to planting. When hole is two-thirds full, shrubs shall be watered thoroughly and water left to soak in before proceeding.
- Mulching: all tree and shrub planting beds to receive a 3" deep layer of high quality shredded hardwood bark mulch (not environmental). All perennial planting areas to receive a 2" layer and groundcover areas a 1-2" layer of the same mulch. Do not mulch annual flower beds (if applicable). Do not allow mulch to contact plant stems and tree trunks.
- Edging: edge all planting beds with a 4" deep spaded edge (shovel cut or mechanical). Bedlines are to be cut crisp, as per plan. A clean definition between lawn area and plant bed is required.
- Plant bed preparation: all perennial, ornamental grass, annual and groundcover areas are required to receive a blend of organic soil amendments prior to installation. Retobill the following materials, at the ratio given, into the required 18" of topsoil to a depth of approx. 8":
Per every 100 square feet of bed area add:
2 cu. ft. bale of peat moss
2 lbs. of 5-10-5 slow release fertilizer
14 cu. yard of composted manure
- Lawn installation for all seeded turfgrass areas: remove 1/4" off any existing unwanted vegetation prior to seeding. Prepare the topsoil and soil bed by removing all surface stones 1" or larger and grading lawn areas to finish grade. Apply a 10-10-10 starter fertilizer uniformly throughout areas prior to laying the soil. Use only premium soil blend according to TP1 (revised 1995) and ASPA standards. Install sod uniformly with staggered joints, laid slightly end to end and side to side. Roll sod with a walk behind roller and water immediately upon installation to a 3" depth. Stake any sod installed on steep slopes or in swales, etc. Landscape contractor is responsible to provide a smooth, uniform, healthy turf, and is responsible for the first two mowings of the newly installed turf, and is also responsible for the required watering during this period.
- Warranty and replacements: Trees, evergreens, and shrubs to be guaranteed (100% replacement) for a minimum of one (1) year from the date of substantial project completion. Perennials, groundcovers, and ornamental grasses to be guaranteed for a minimum of one growing season from the date of substantial project completion. Perennials, groundcovers, and ornamental grasses planted after September 1st shall be guaranteed through May 31st of the following year. Only one replacement per plant will be required during the warranty period, except for losses or replacements due to failure to comply with specified requirements.
- The landscape contractor is responsible for the watering and maintenance of all landscape areas at time of planting, throughout construction and for a period of 60 days after the substantial completion of the installation. This includes all trees, shrubs, evergreens, perennials, ornamental grasses, turf grass, meadow grass and wildflower areas. Work also includes weeding, edging, mulching (only if required), fertilizing, trimming, sweeping up grass clippings, pruning and deadheading.
- Project completion: upon substantial completion of the project, the landscape contractor is responsible to conduct a final review with the owner's representative and the general contractor to answer questions and insure that all specifications have been met. The landscape contractor is to provide watering and general ongoing maintenance instructions (in writing) for the new plantings and lawn to the owner and general contractor.



W. HOWARD AVE.



PLANT SCHEDULE

COMMON NAME	BOTANICAL NAME	SIZE	ROOT	REMARKS
Autumn Blaze Maple	Acer freemanii 'Autumn Blaze'	2 1/2" CAL	B&B	Full, matching heads
Golden Glory Cornelian Cherry	Cornus mas 'Golden Glory'	5' HT	B&B	Clump, min. 3 stems
Swamp White Oak	Quercus bicolor	2 1/2" CAL	B&B	Full, matching heads
American Linden	Tilia americana	2 1/2" CAL	B&B	Full, matching heads
Triumph Elm	Ulmus x 'Morton Glossy' TM	2 1/2" CAL	B&B	Full, matching heads
Black Hills Spruce	Picea glauca 'Densata'	6' HT	B&B	Semi-sheared, fully branched to ground
Emerald Arborvitae	Thuja occidentalis 'Smarad'	6' HT	B&B	Semi-sheared, fully branched to ground
Red Jewel Crab Apple	Malus x 'Red Jewel'	1 1/2" CAL	B&B	Full, matching heads
Iroquois Beauty Black Chokeberry	Aronia melanocarpa 'Iroquois Beauty' TM	15' HT	CONT.	
Bailey's Red Twig Dogwood	Cornus sericea 'Bailey's Redtwig'	3' HT	CONT.	
Peking Cotonaster	Cotoneaster acutifolius	24" HT	CONT.	
Dwarf Bush Honeyuckle	Diervilla lonicera	15" HT	CONT.	
Common Witch Hazel	Hamamelis virginiana	24" HT	CONT.	
Gro-Low Fragrant Sumac	Rhus aromatica 'Gro-Low'	15" HT	CONT.	
Tor Birchleaf Spirea	Spiraea betulifolia 'Tor'	15" HT	CONT.	
Little Princess Spirea	Spiraea x japonica 'Little Princess'	15" HT	CONT.	
Dwarf Korean Lilac	Syringa meyeri 'Palibin'	24" HT	CONT.	
Arrowwood Viburnum	Viburnum dentatum	3' HT	B&B	
Blue Muffin Arrowwood	Viburnum dentatum 'Blue Muffin'	3' HT	B&B	
Little Bluestem Grass	Schizachyrium scoparium	1 GAL.	POT	18" Spacing
Prairie Dropseed	Sporobolus heterolepis	1 GAL.	POT	18" Spacing
Kim's Knee High Purple Coneflower	Echinacea purpurea 'Kim's Knee High' TM	4 1/2"	POT	18" Spacing
Happy Returns Daylily	Hemerocallis x 'Happy Returns'	4 1/2"	POT	18" Spacing
Walkers Low Catmint	Nepeta x faassenii 'Walkers Low'	4 1/2"	POT	24" Spacing

THE LOCATIONS OF EXISTING UTILITY INSTALLATIONS AS SHOWN ON THIS PLAN ARE APPROXIMATE. THERE MAY BE OTHER UNDERGROUND UTILITY INSTALLATIONS WITHIN THE PROJECT AREA THAT ARE NOT SHOWN.

R.A. SMITH NATIONAL ASSUMES NO RESPONSIBILITY FOR DAMAGES, LIABILITY OR COSTS RESULTING FROM CHANGES OR ALTERATIONS MADE TO THIS PLAN WITHOUT THE EXPRESSED WRITTEN CONSENT OF R.A. SMITH NATIONAL.

R.A. Smith National
Beyond Surveying
and Engineering
www.rasmithnational.com

DIALYSIS CENTER-2600 W. HOWARD AVE.
CITY OF MILWAUKEE, WI

LANDSCAPE PLAN

© COPYRIGHT 2016
R.A. Smith National, Inc.
DATE: 07/28/16
SCALE: 1" = 20'
JOB NO. 3150418
PROJECT MANAGER:
WALTER J. LAUTNER, P.E.
DESIGNED BY: RASN
CHECKED BY: RASN
SHEET NUMBER
L100

ADDENDUM #1