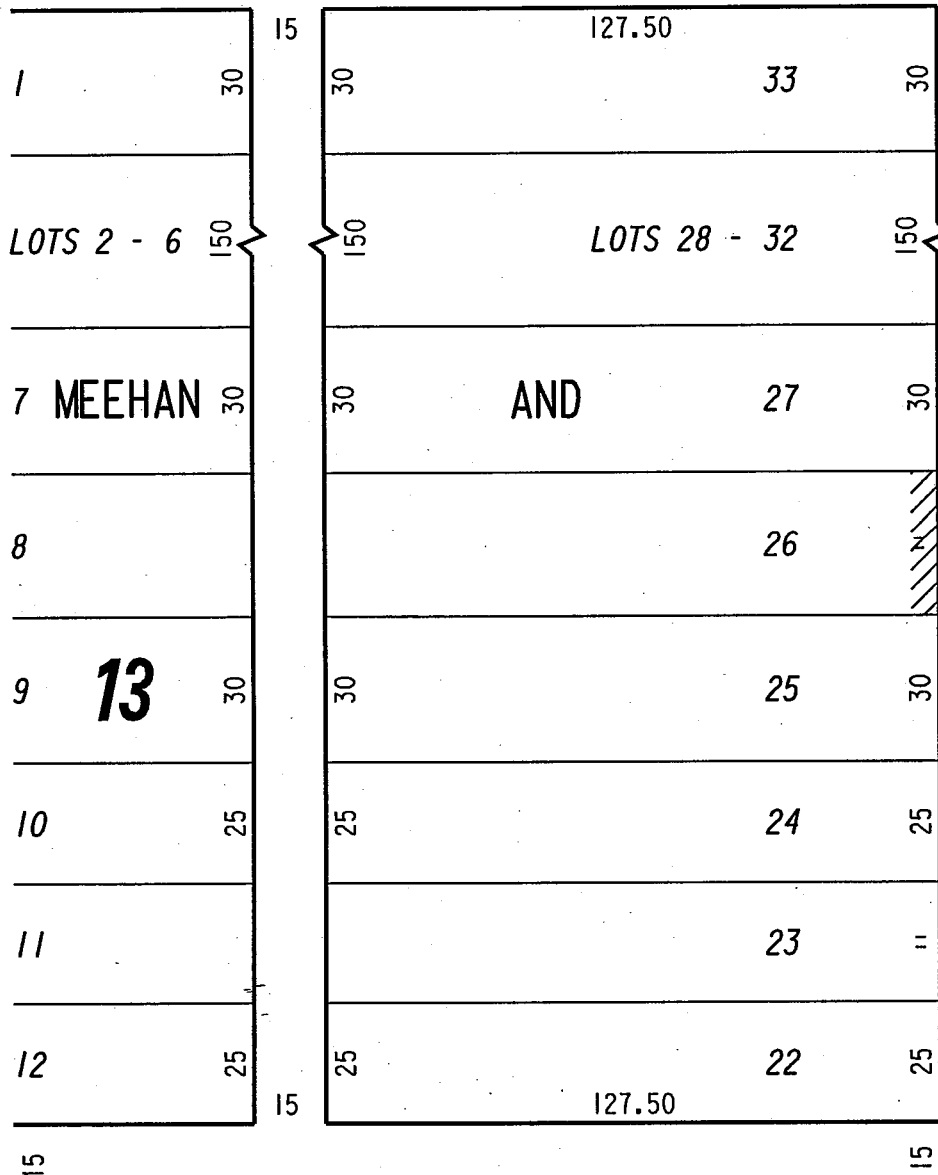


N.W. 1/4 SEC. 19, T.7N., R.22E.

350

W. Lloyd St.

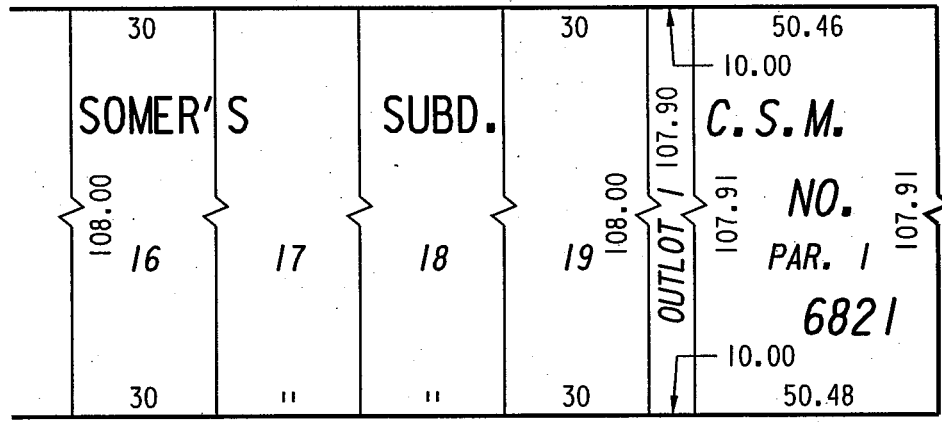
(60' R.O.W.)



Pl.

NO VEHICULAR ACCESS

(60' R.O.W.)



N. 24th

(60' R.O.W.)

W. Brown St.

PORTION OF NO VEHICULAR ACCESS RESTRICTION TO BE RELEASED

FILE NO. INFRASTRUCTURE SERVICES DIVISION

MILWAUKEE, WISCONSIN

ASSIGNED TO: W.E. FUCHS

CH'K'D. BY: M.C. WILLIAMS

DRAWN BY: W.E.F.

DATE: SEPT. 11, 2001

PROJECT/GRANT NO.: WK52360032

SCALE: 1" = 40'

APPROVED BY:

Marcia Lindholm

Jeffrey D. ...

CENTRAL DRAFTING & RECORDS MANAGER

CITY ENGINEER