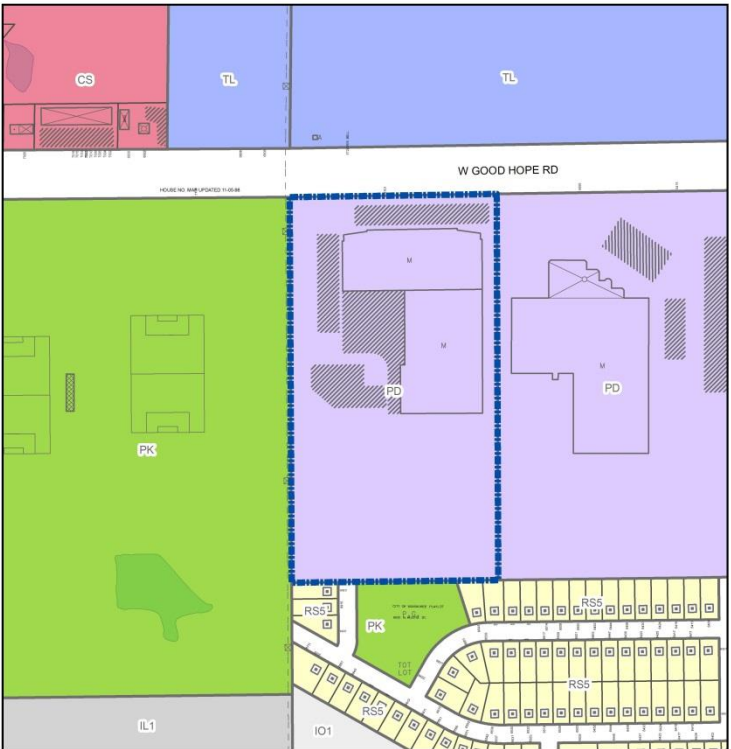


File No. 151449. A substitute ordinance relating to the 1st Amendment to a Detailed Planned Development known as Good Hope Industrial Center for expansion of HellermannTyton's facilities at 6701 West Good Hope Road, located on the south side of West Good Hope Road, west of North 60<sup>th</sup> Street, in the 9<sup>th</sup> Aldermanic District.



FN 151449  
Amend DPD zoning  
February 2016

- Legend**
- Subject Zoning Change
  - Zoning**
  - Commercial - Commercial Service



File No. 151449. Site Context Photos.



File No. 151449. Site Context Photos.



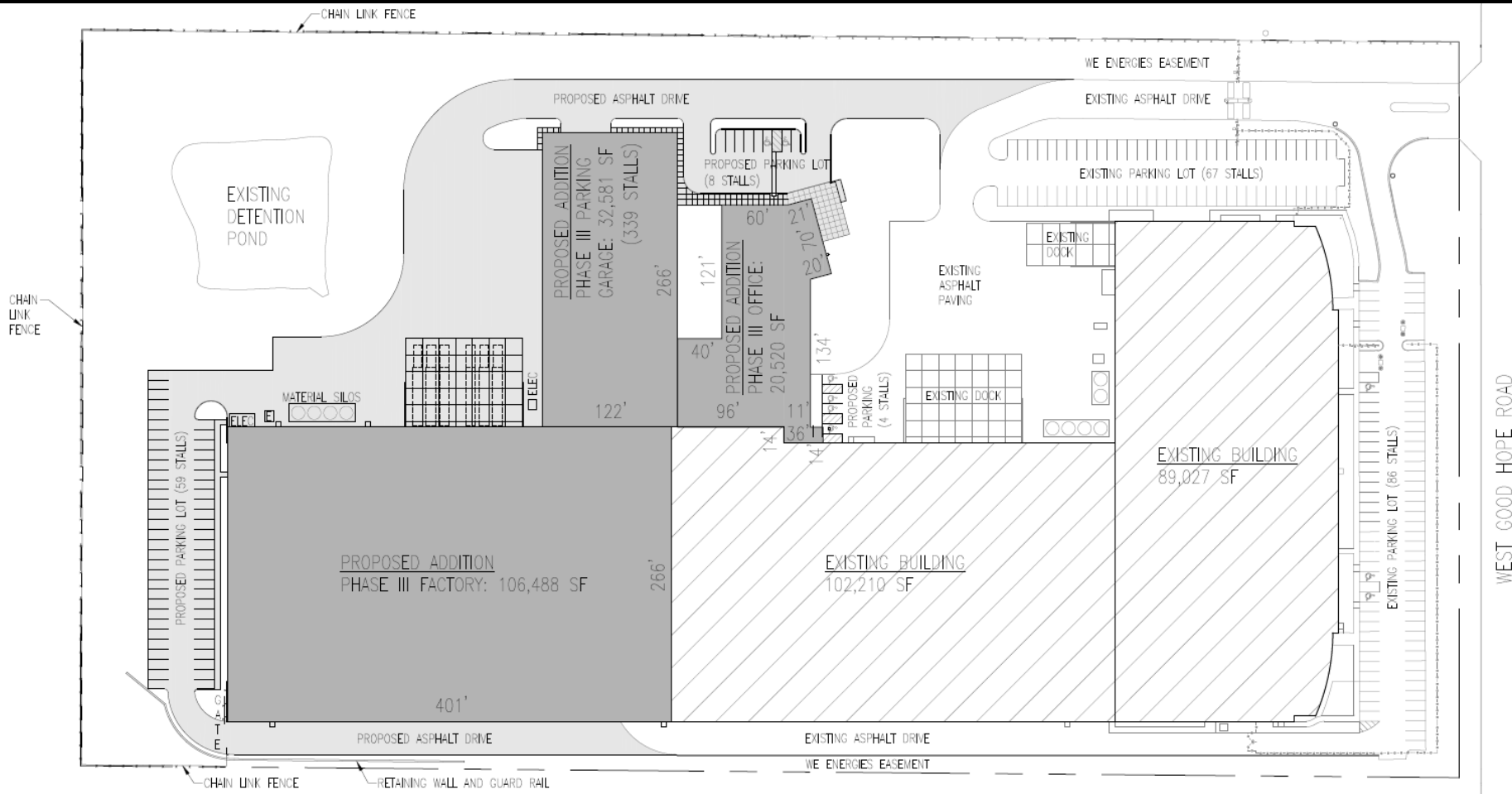
File No. 151449. Site Context Photos.



File No. 151449. Site Context Photos.



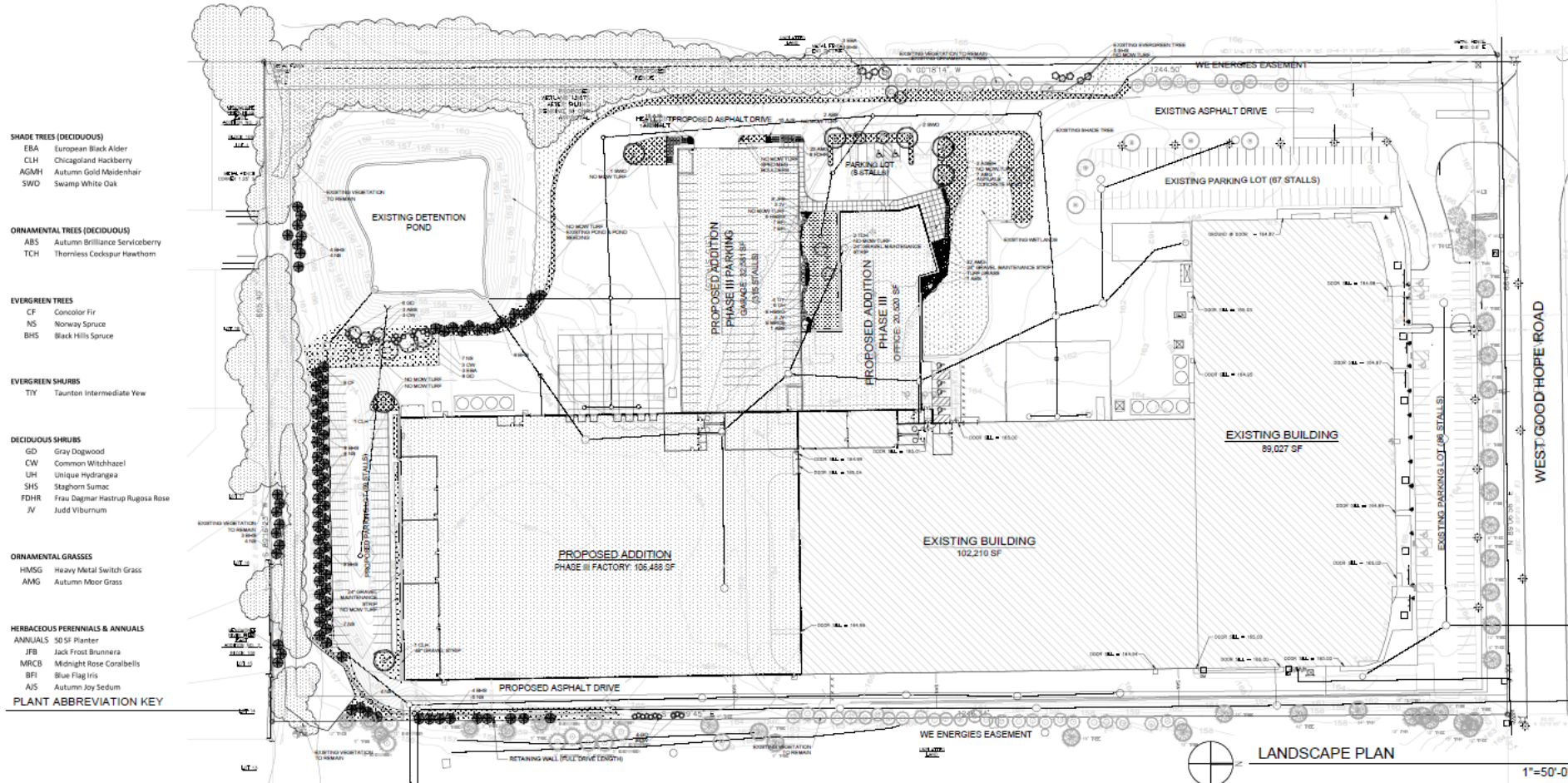
File No. 151449. Site Plan.



WEST GOOD HOPE ROAD

# 4. Zoning – Public Hearing 1:55 PM

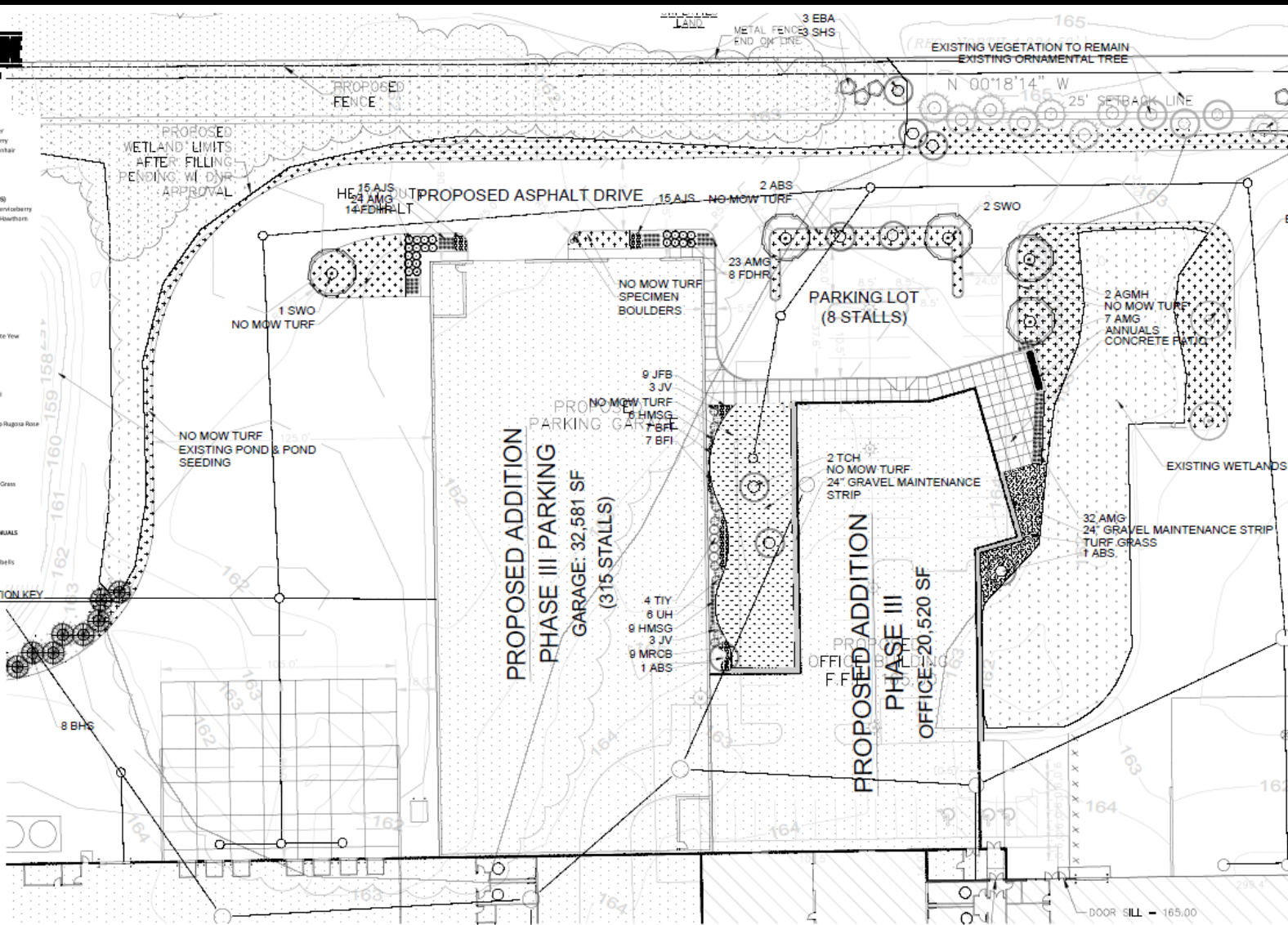
File No. 151449. Landscape Plan.





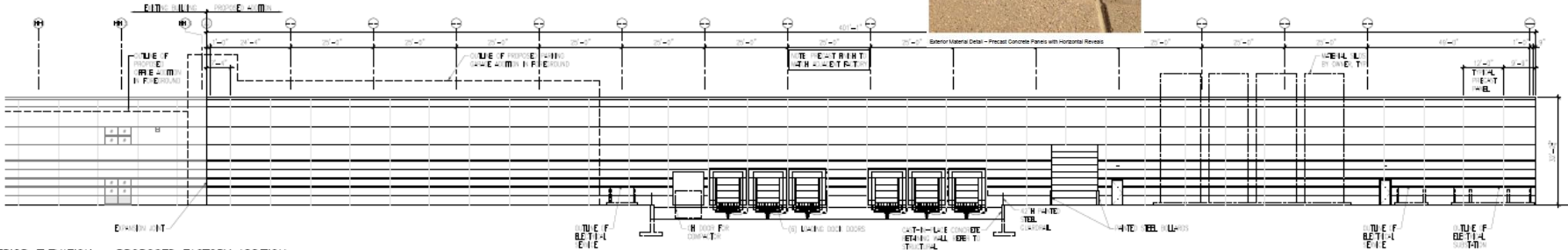
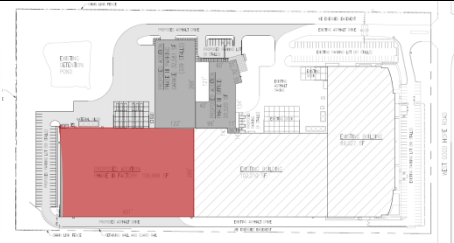
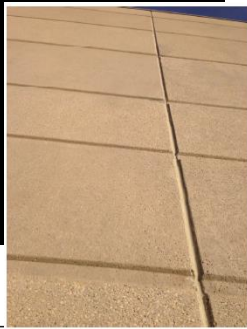
**NEEDS TO NOTE**

- Toll Free (800) 242-458  
 Milwaukee Area (414) 258-1181  
 Healing Institute TCO (800) 546-2288  
 www.hellerandassociates.com
- SHADE TREES (DECIDUOUS)**  
 EBA European Black Alder  
 CLH Chicago and Hackberry  
 AGMH Autumn Gold Hackberry  
 SWO Swamp White Oak
- ORNAMENTAL TREES (EVERGREEN)**  
 ABS Autumn Brilliance Serviceberry  
 TCH Thornless Cockspur Hawthorn
- EVERGREEN TREES**  
 CF Concolor Fir  
 NS Norway Spruce  
 BHS Black Hills Spruce
- EVERGREEN SHRUBS**  
 TIV Taxodium Intermediate Yew
- DECIDUOUS SHRUBS**  
 GO Gray Dogwood  
 CW Cawson Whitehazel  
 LH Ligustrum Hydrangea  
 SHS Staghorn Sumac  
 FDHR Frax Dipetala Hybrid Rugosa Rose  
 JV Judd Viticolumna
- ORNAMENTAL GRASSES**  
 HMSG Heavy Metal Switch Grass  
 AMG Autumn Moor Grass
- HERBACEOUS PERENNIALS & ANNUALS**  
 ANNUALS 50/50 Planter  
 FFB Jack Frost Beavers  
 MRCB Midnight Rose Coralbells  
 RI Rose of Sharon  
 AIS Autumn Joy Sedum
- PLANT ABBREVIATION KEY**



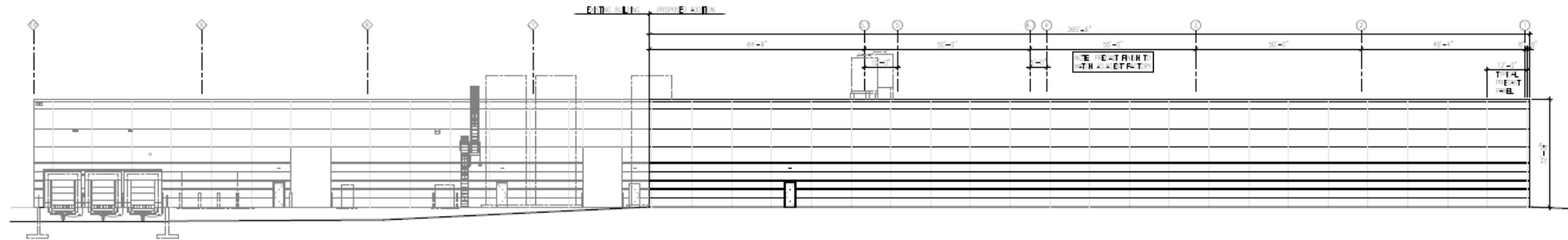


# File No. 151449. Factory Addition.



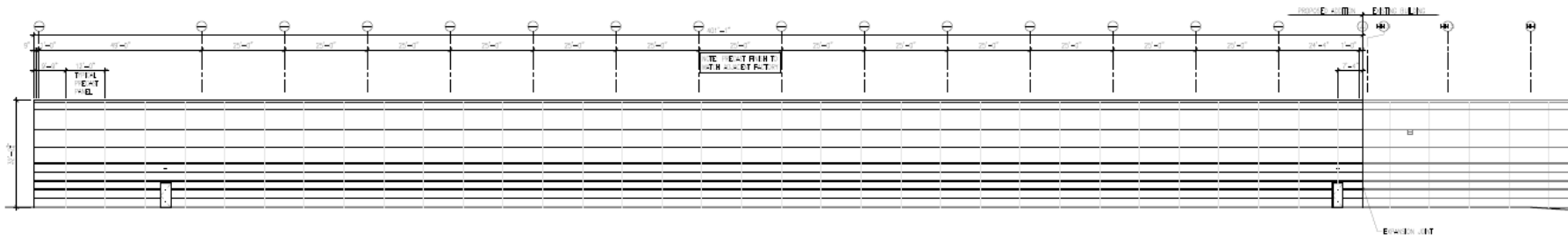
A1 4400 EXTERIOR ELEVATION - PROPOSED FACTORY ADDITION  
E-T

1/16" = 1'-0"



B1 4400 EXTERIOR ELEVATION - PROPOSED FACTORY ADDITION  
SOUTH

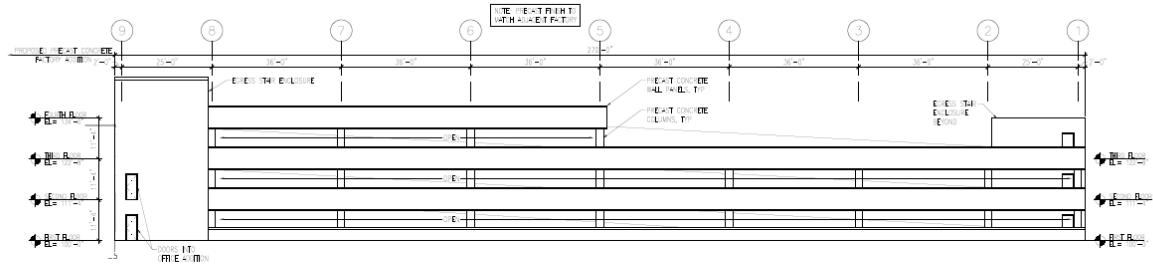
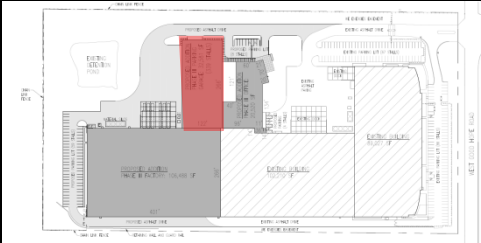
1/16" = 1'-0"



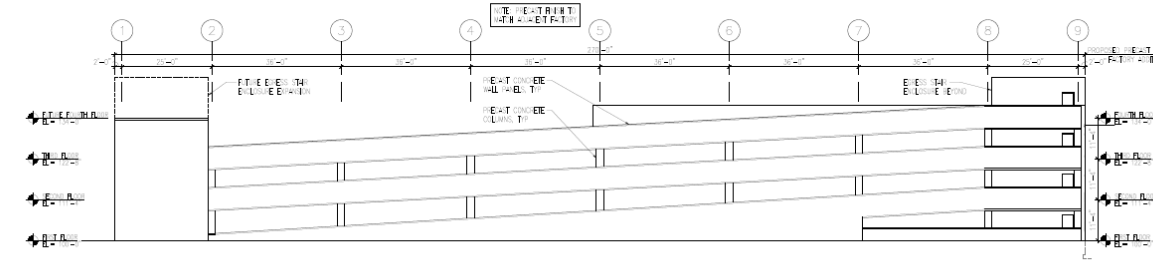
C1 4400 EXTERIOR ELEVATION - PROPOSED FACTORY ADDITION  
E-T

1/16" = 1'-0"

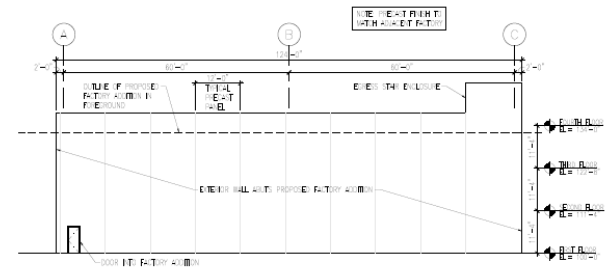
# File No. 151449. Parking Structure.



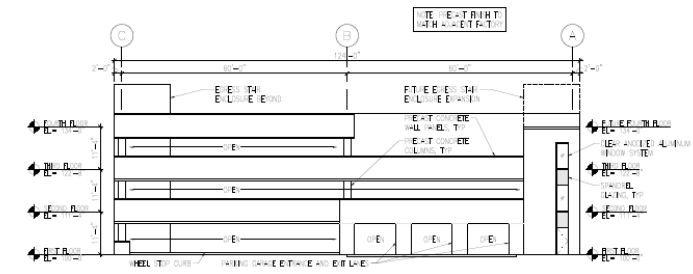
EXTERIOR ELEVATION - PROPOSED PARKING GARAGE ADDITION



EXTERIOR ELEVATION - PROPOSED PARKING GARAGE ADDITION



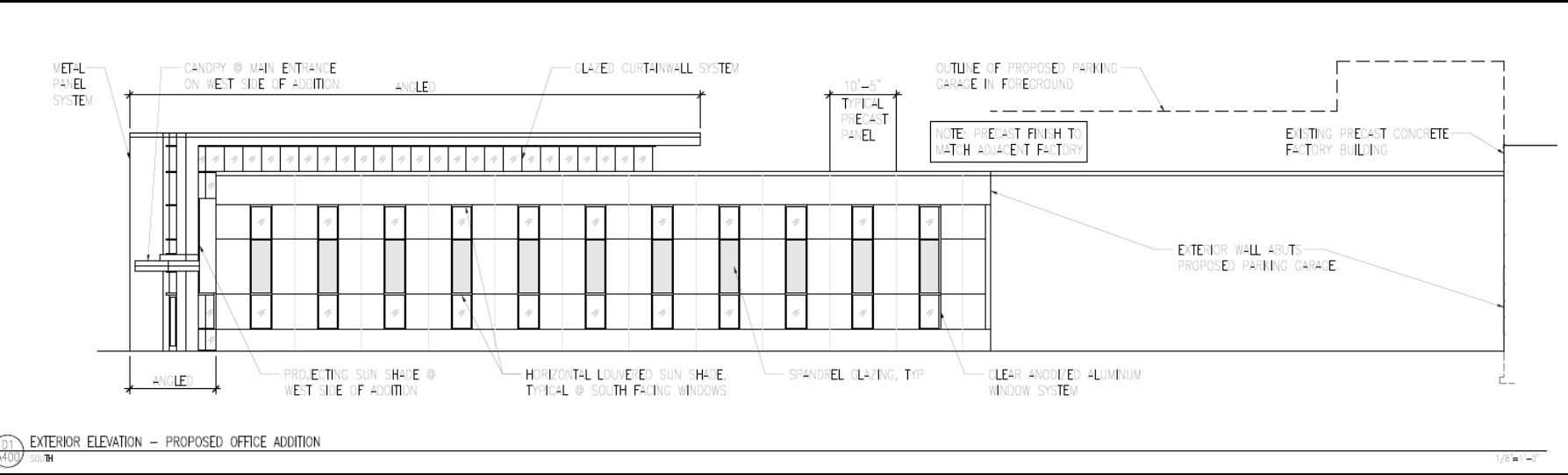
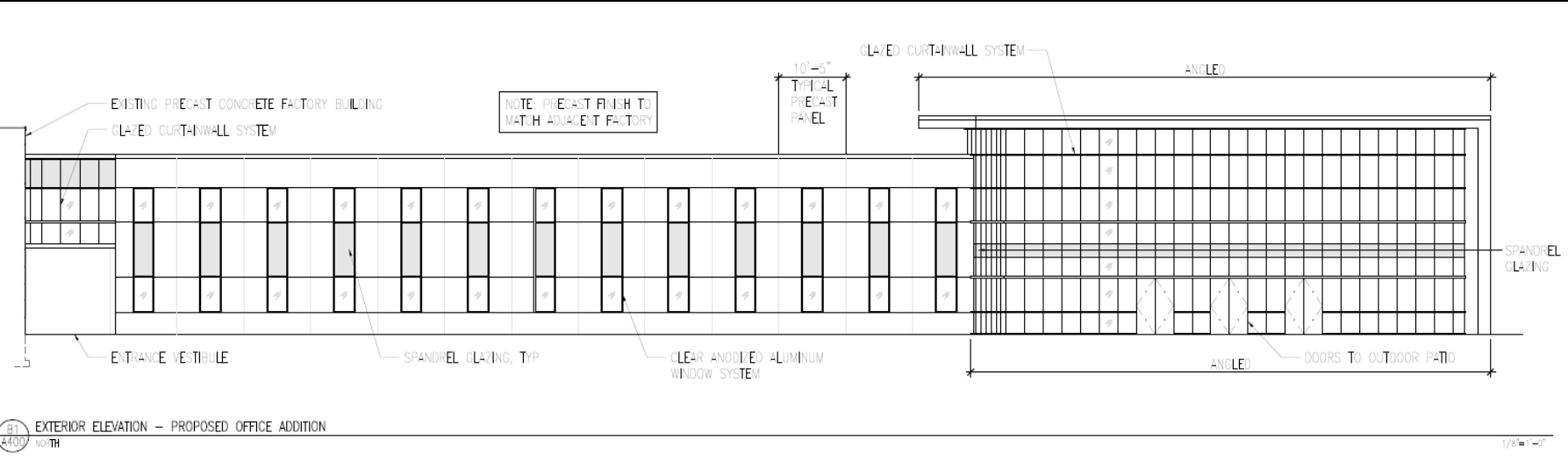
EXTERIOR ELEVATION - PROPOSED PARKING GARAGE ADDITION



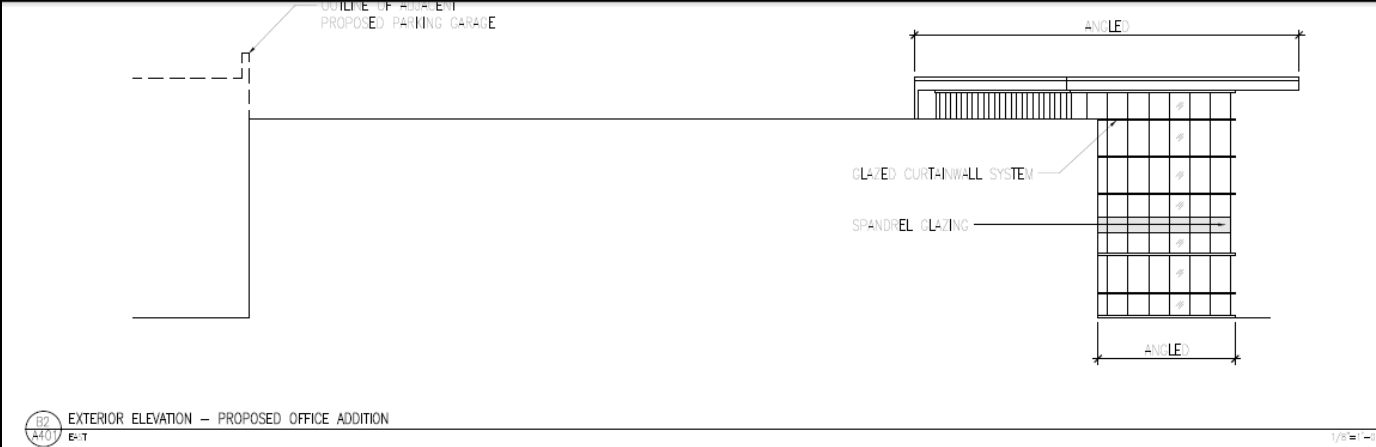
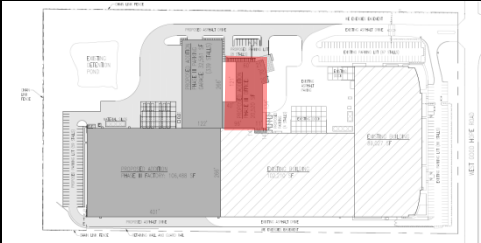
EXTERIOR ELEVATION - PROPOSED PARKING GARAGE ADDITION



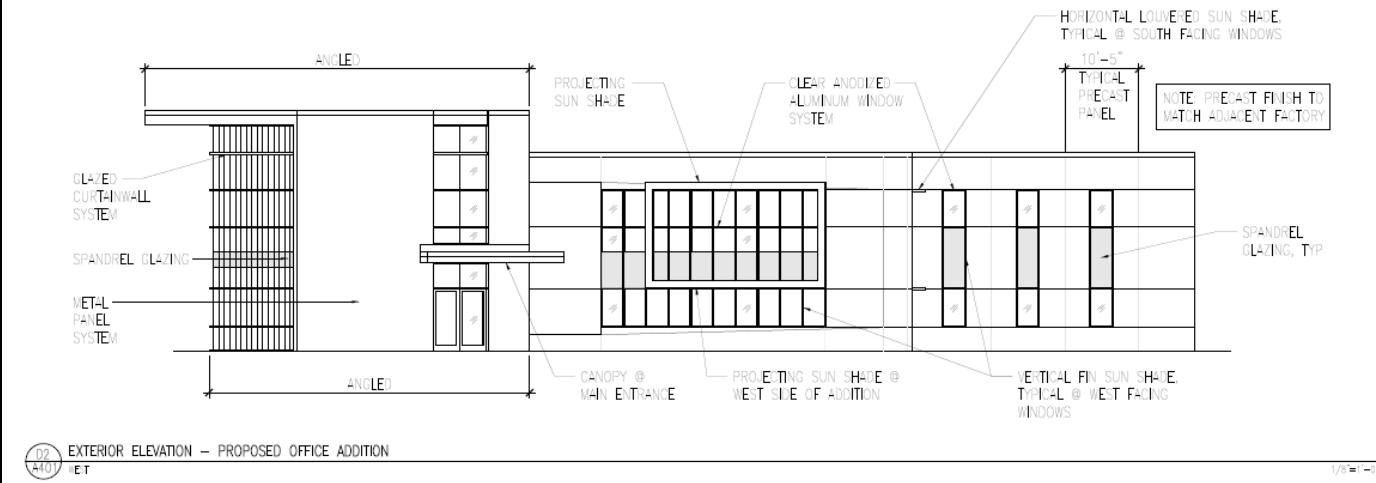
# File No. 151449. Office Addition.



# File No. 151449. Office Addition.



B2  
A401  
E-17  
EXTERIOR ELEVATION — PROPOSED OFFICE ADDITION



D2  
A401  
E-18  
EXTERIOR ELEVATION — PROPOSED OFFICE ADDITION