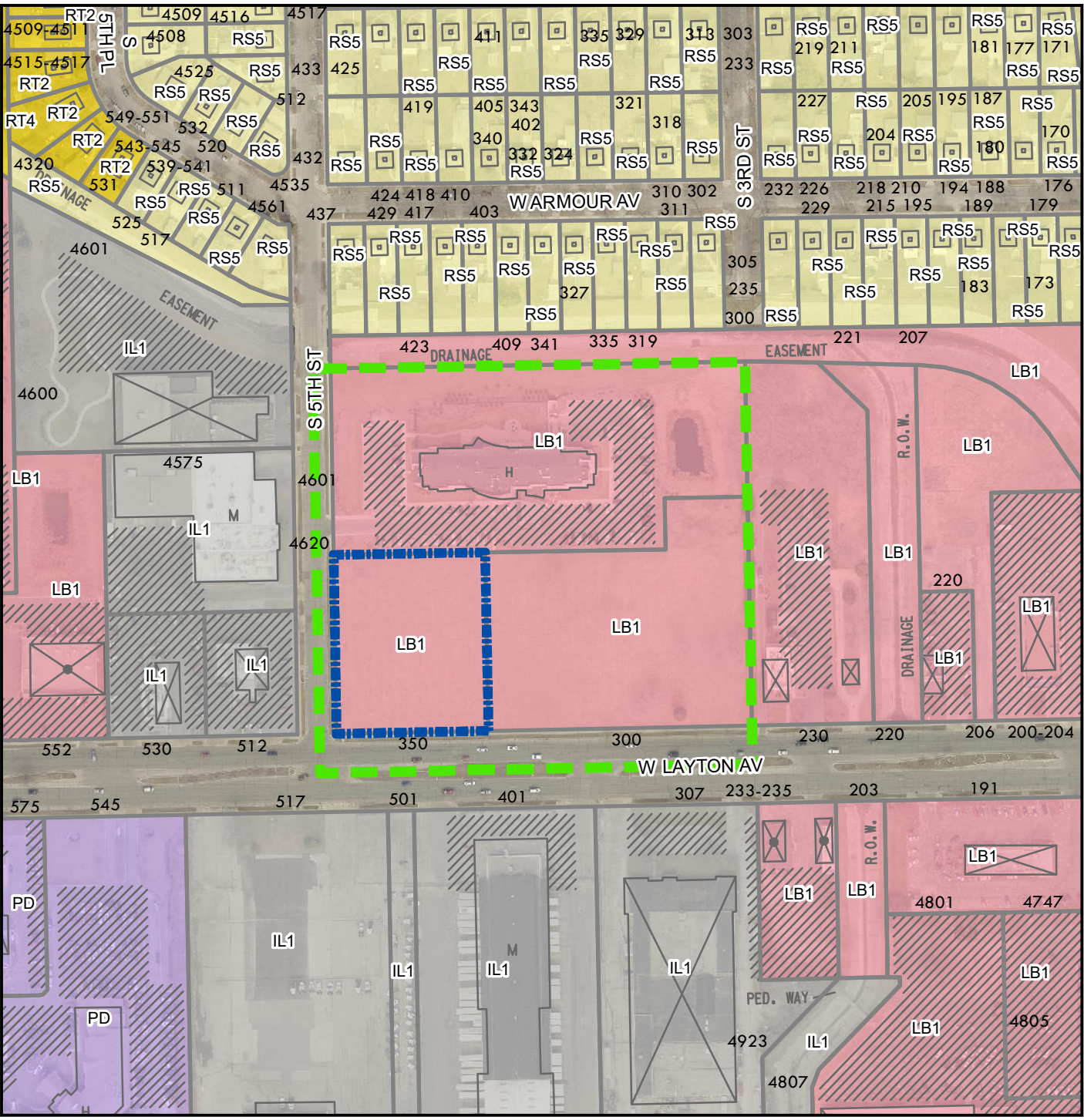





File Nos. 220032 & 220033
350 W. Layton Avenue
Layton Plaza DIZ



Legend

-  350 W. Layton Ave
-  Layton Plaza DIZ Boundary

Zoning

-  Unknown or pending zone

Zoning Category

-  Residential - single family
-  Residential - two family
-  Residential - multi-family
-  Residential - residence and office
-  Central business district - civic activity
-  Central business district - high-density residential
-  Central business district - major retail
-  Central business district - mixed activity
-  Central business district - neighborhood retail
-  Central business district - office and service
-  Central business district - residential and specialty use
-  Central business district - warehousing and light manufacturing
-  Commercial - neighborhood shopping
-  Commercial - local business
-  Commercial - commercial service
-  Commercial - regional business
-  Industrial - commercial
-  Industrial - office
-  Industrial - light
-  Industrial - mixed
-  Industrial - heavy
-  Special - parks
-  Special - institutional
-  Special - planned development
-  Special - redevelopment district

N

