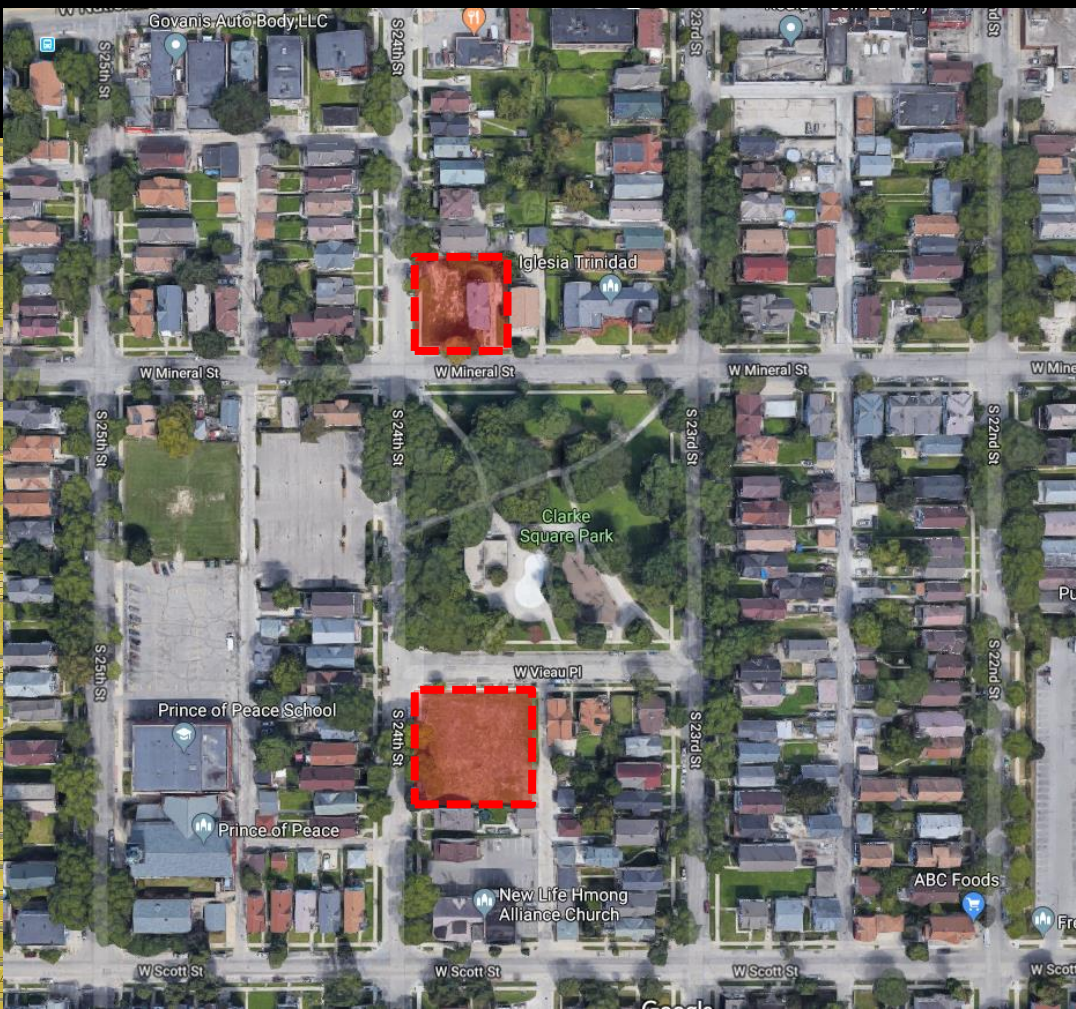
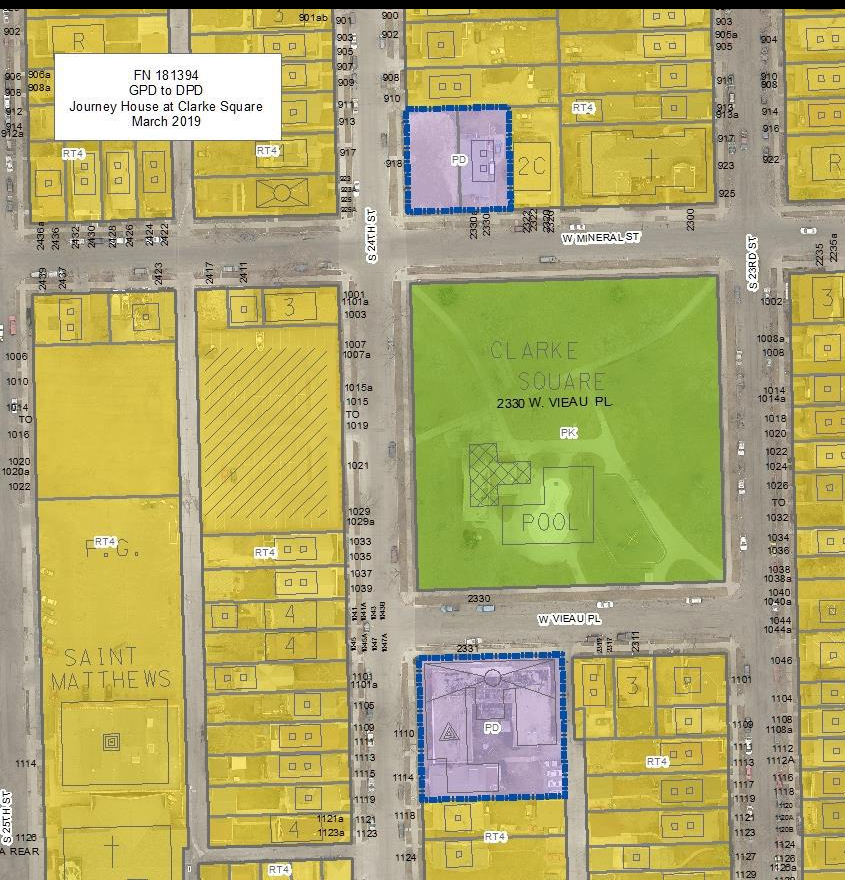


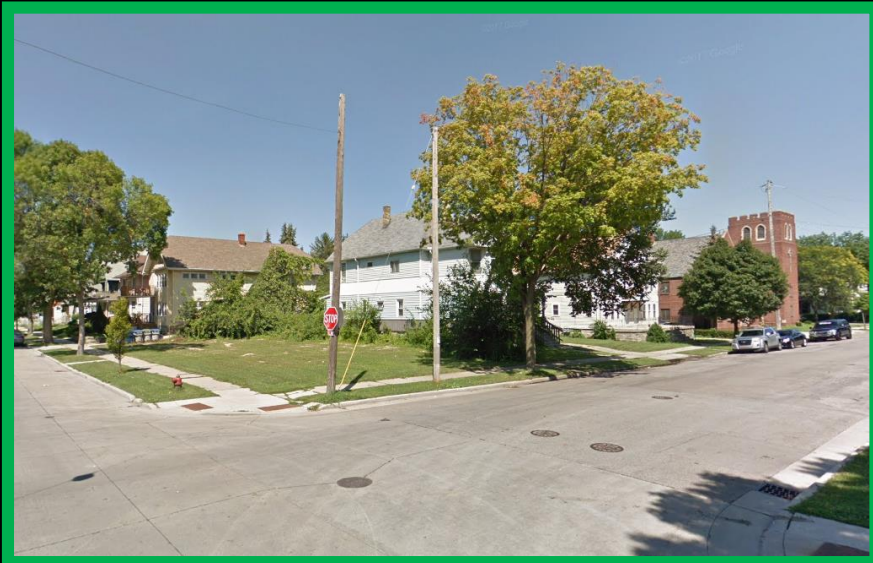
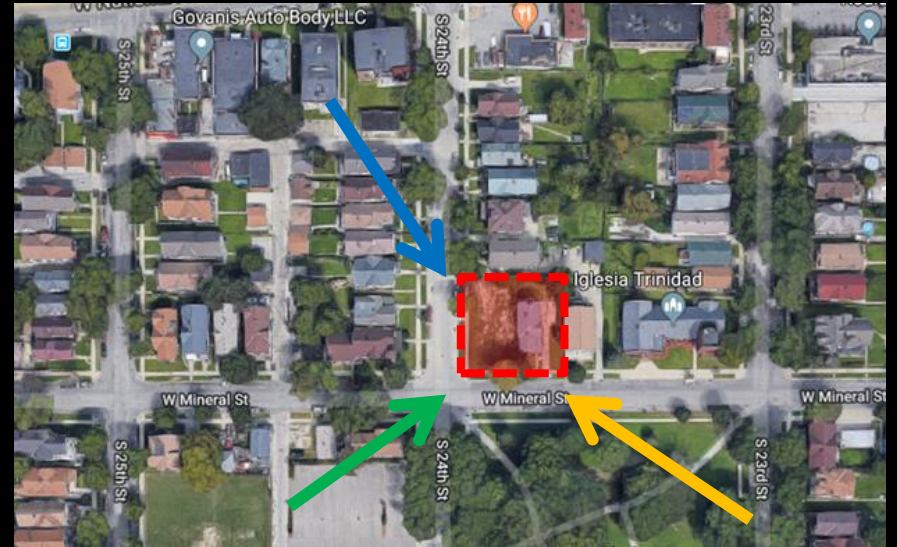
File No. 181394. A substitute ordinance relating to the change in zoning from a General Development known as Clarke Square Apartments to a Detailed Planned Development known as Journey House at Clarke Square for multi-family residential development at 2331 West Vieau Place, 918 South 24th Street and 2330 West Mineral Street, located on the northeast corner of West Mineral Street and North 24th Street and the southeast corner of West Vieau Place and North 24th Street, in the 8th Aldermanic District.



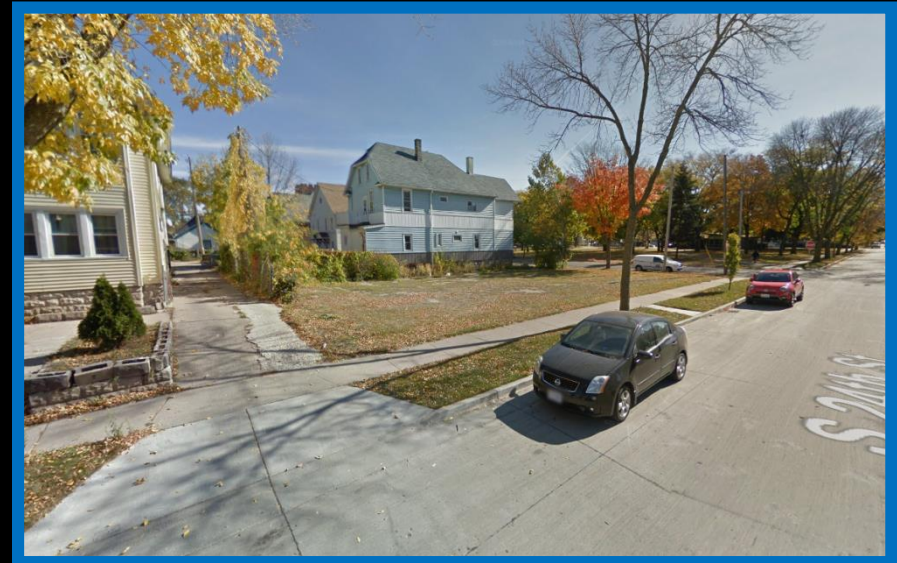
File No. 181394. Site Context Photos (West Mineral Street – Northern Site)



View from West Mineral Street looking north-west



View from South 24th Street looking north-east

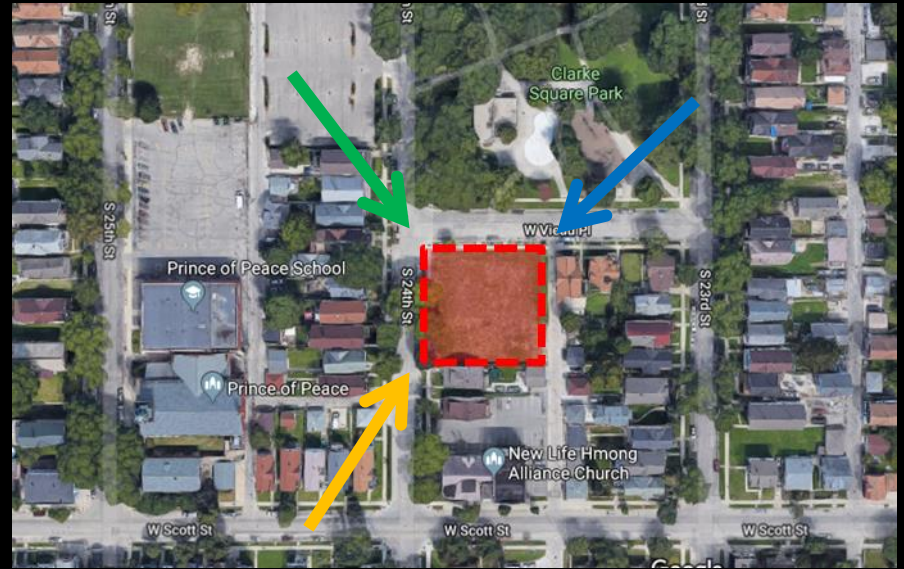


View from South 24th Street looking south-east

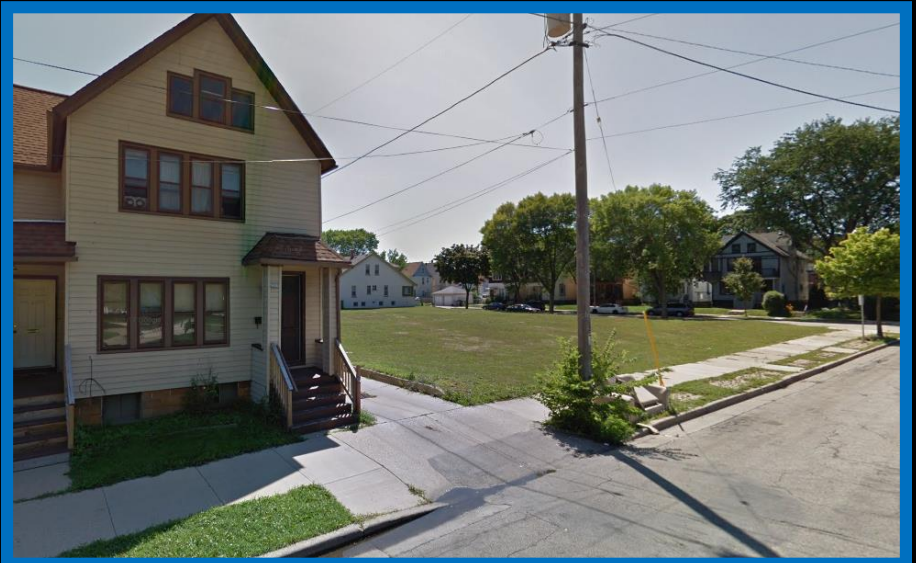
File No. 181394. Site Context Photos (West Vieau Place – Southern Site)



View from South 24<sup>th</sup> Street looking north-east



View from S. 24<sup>th</sup> and W. Vieau looking south-east



View from West Vieau Place looking south-west