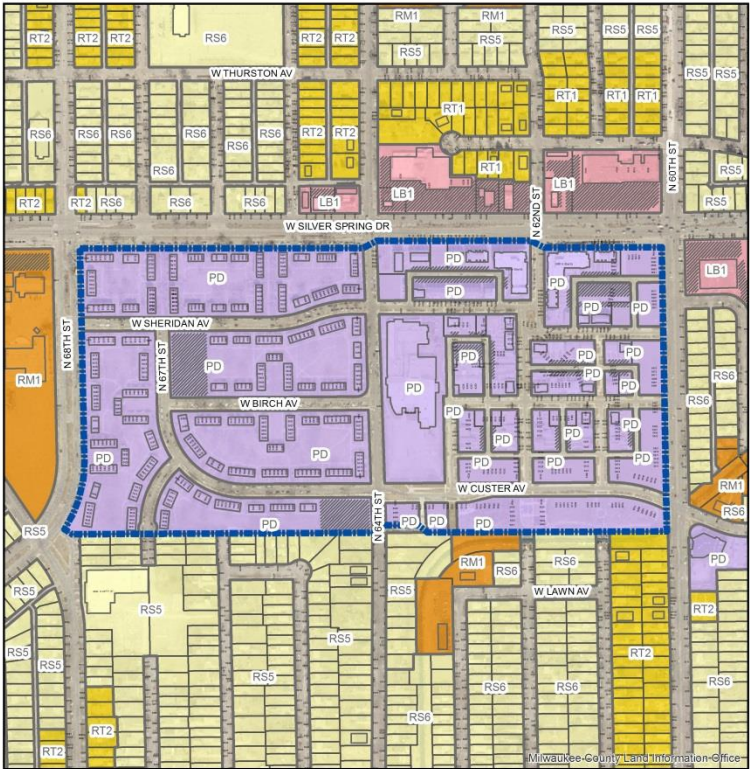


File No. 160267. An ordinance relating to the First Amendment to the General Planned Development known as Westlawn Revitalization for the properties located on the south side of West Silver Spring Drive between North 60th Street and North 68th Street, in the 2nd Aldermanic District.



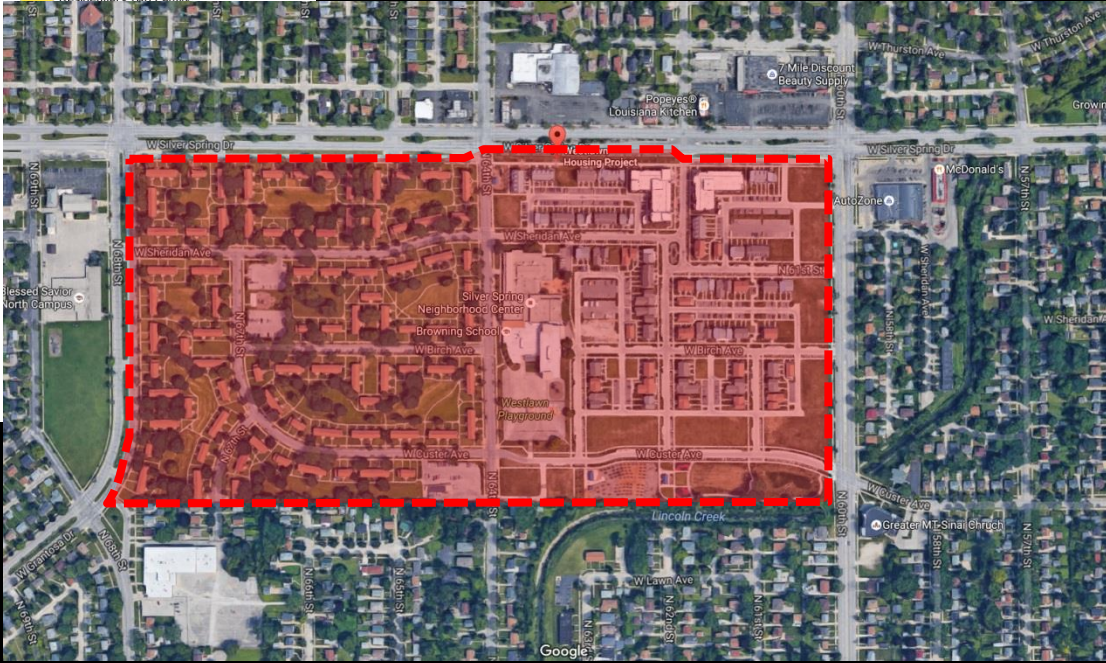
FN 160267
1st Amendment to GPD
Westlawn Revitalization
August 2016

Legend

- Zoning Change Boundary

Zoning

- Commercial - Commercial Service
- Commercial - Neighborhood Shopping
- Commercial - Local Business
- Commercial - Regional Business
- Downtown
- Industrial - Office
- Industrial - Light
- Industrial - Mixed
- Industrial - Heavy
- Residential - Single Family
- Residential - Two Family



© Milwaukee County Land Information Office

Google

Milwaukee's Choice Neighborhood

INTRODUCTION

A locally-driven, comprehensive strategy to transform Westlawn and the surrounding neighborhood into **an inclusive community of opportunity with quality housing, schools, businesses, services, and amenities where people want to live, learn, work, shop, and play.**

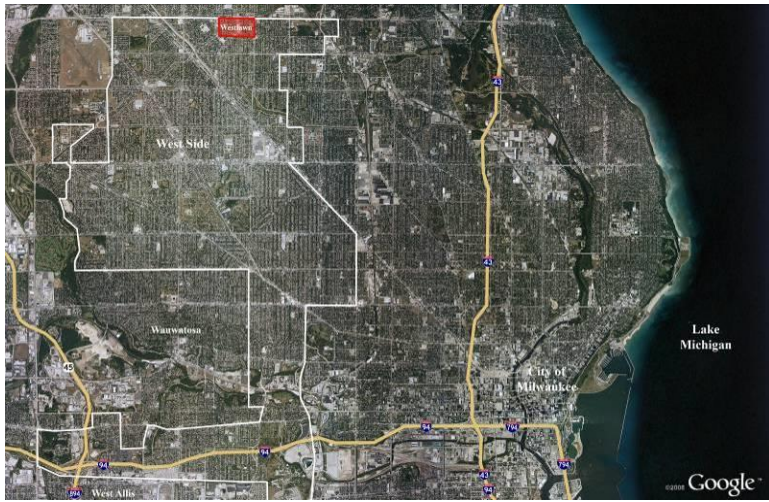


City Plan Commission Hearing – Updated GPD Submission

WESTLAWN REDEVELOPMENT

HOUSING AUTHORITY OF THE CITY OF MILWAUKEE ENTELECHY
TORTI GALLAS AND PARTNERS KINDNESS ARCHITECTURE & PLANNING





Existing Site Conditions



Existing Site Photos



Housing Authority of the City of Milwaukee

Entelechy



Torti Gallas and Partners Kindness Architecture & Planning

WESTLAWN Redevelopment



Charrette Process



Renderings from Charrette



Housing Authority of the City of Milwaukee

Entelechy



Torti Gallas and Partners Kindness Architecture & Planning

WESTLAWN Redevelopment



Mixed Use Apartment Building

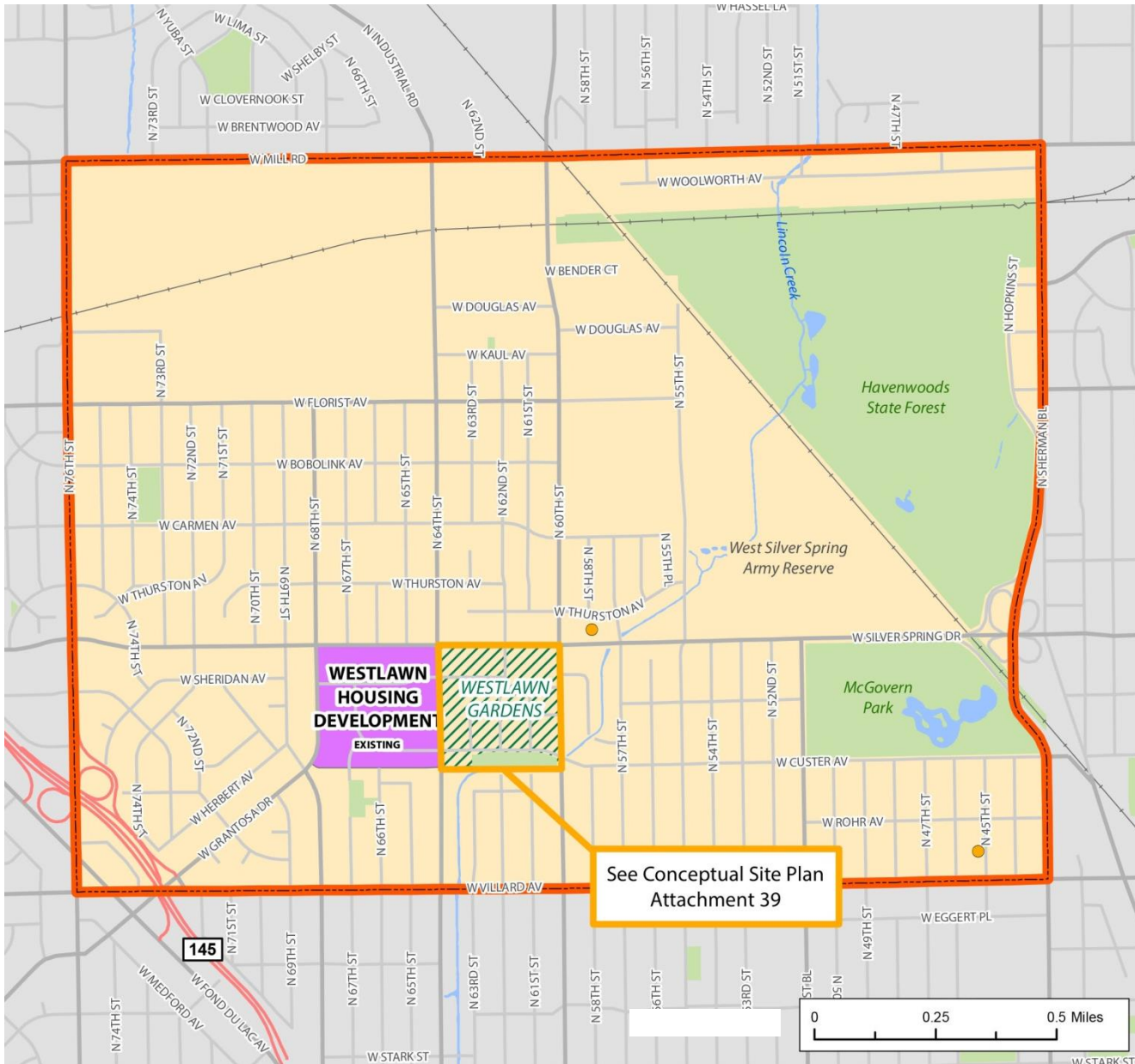


Mixed Use Apartment Building






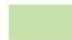

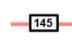




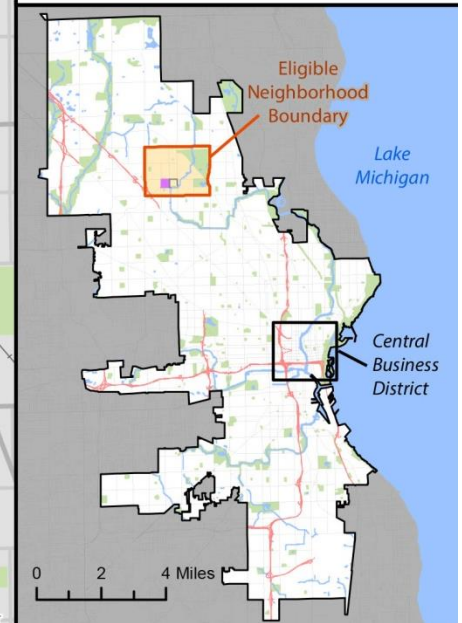
Townhouses and Single Family

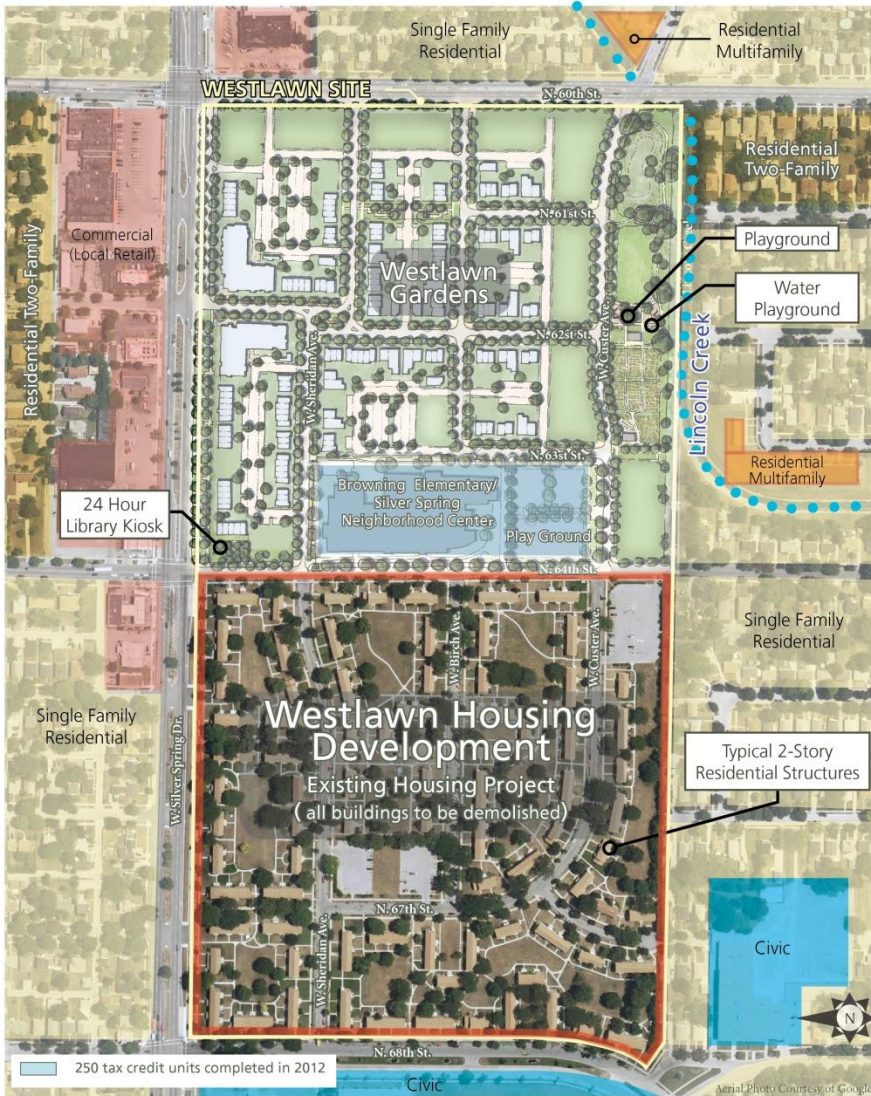
Housing: Multifamily and Family



LEGEND

-  Eligible Neighborhood
-  Westlawn Housing Development
-  Westlawn Gardens
-  Off-Site Properties in Westlawn Gardens, Att. 39
-  Public Housing Replacement Units
-  Parks
-  Water
-  Freeway
-  Street
-  Railroad





Aerial Photograph of Neighborhood



Charrette Process



Illustrative GPD Site Plan



Mixed Use Apartment Building



Mixed Use Apartment Building



Townhouses and Single Family

Housing: Multifamily and Family



Open Space Diagrams



Heritage Green **Splashpad** at WESTLAWN GARDENS

COMING SOON!



Welcome to Heritage Green, a new park space in Westlawn Gardens that provides a variety of ways for neighborhood residents to develop healthy lifestyles and build community. The Heritage Green splashpad will be a highlight of the park, providing fun times and good memories for neighborhood youth and their families. Located on the south end of the development, the splashpad and other Heritage Green features will connect residential areas to the natural beauty of Lincoln Creek.

Heritage Green splashpad features:

- Approximately 1,100 square feet of wet play area
- Restroom, outdoor shower and drinking fountain
- Lifeguard safety plan
- Mix of ground mounted water sprays, mists, and jets
- Programmable sequences for a variety of play options to keep kids interested longer
- Fun for all with designated areas for younger children and older teens
- Non-skid, colorful surfaces
- Variety of stone outcroppings and seating options to provide year-round interest
- Automatic shut-off and rain detection to prevent unnecessary rainwater collection
- Durable and low maintenance materials
- A water-saving system that recirculates filtered and treated water from a potable source.

The splashpad uniquely complements other features of Heritage Green, including a gathering shelter, a tot-lot playground, a children's playground, community gardens, a lawn playing field, and looped walking paths. Heritage Green serves as a center of healthy activity and a foundation for strengthening the broader neighborhood.

About Westlawn Gardens

Westlawn Gardens is a dynamic, new neighborhood on Milwaukee's northwest side that is the first stage of the revitalization of Westlawn, formerly Wisconsin's largest public housing development. Developed by the Housing Authority of the City of Milwaukee (HACM), Westlawn Gardens is modeled after traditional neighborhood design with a diverse mix of housing styles, household incomes, and places for respite and play. First developed in the 1950s, the 75-acre Westlawn provided critical affordable housing to a bustling city and is now being revitalized for 21st century housing and community needs.



AERIAL VIGNETTE

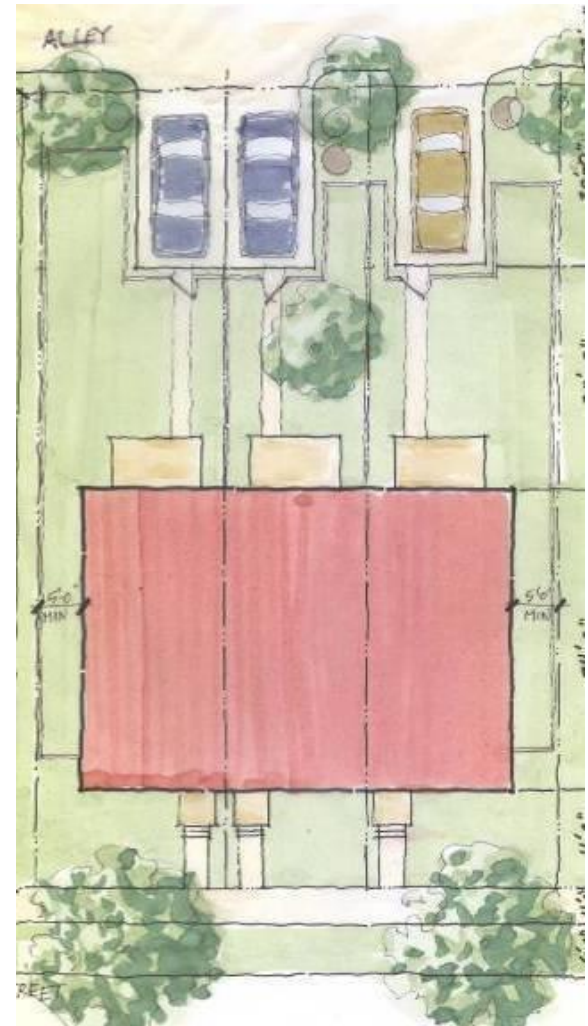
PLAN VIEW

- A** Splashpad area (1100sf)
- B** Existing tot-playground
- C** Existing child-playground
- D** Existing covered shelter area
- E** Restroom/Mechanical enclosure
- F** 36" tall fence
- G** Rain garden area
- H** Sunken lawn play field area
- I** Community garden area



PRECEDENT IMAGES





Typical Block and Lot Diagrams