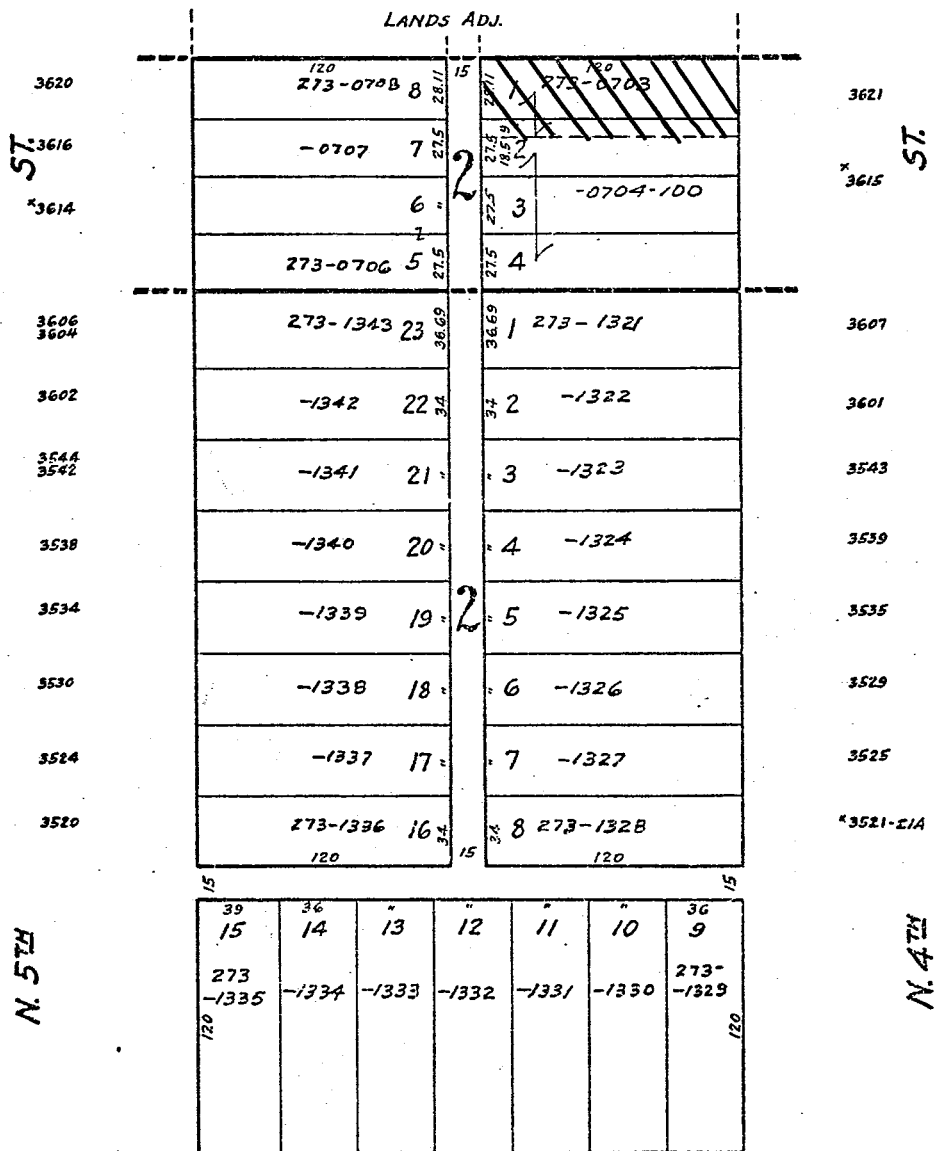


N.E. 8-7-22
ATLAS P. 273

273

273-31



M^EHENRY'S SUBD. N^O 2

N. 5TH

N. 4TH

MICROFILMED 3-26-81

430 424 420 416 410 406 402
432 426 422 418 412 408
W. KEEFE AVE.

SCHNEIDER'S SUBD.

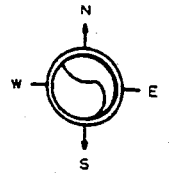
NW 17-7-22

ATLAS P. 312

312

312-08

SCALE 1" = 80'

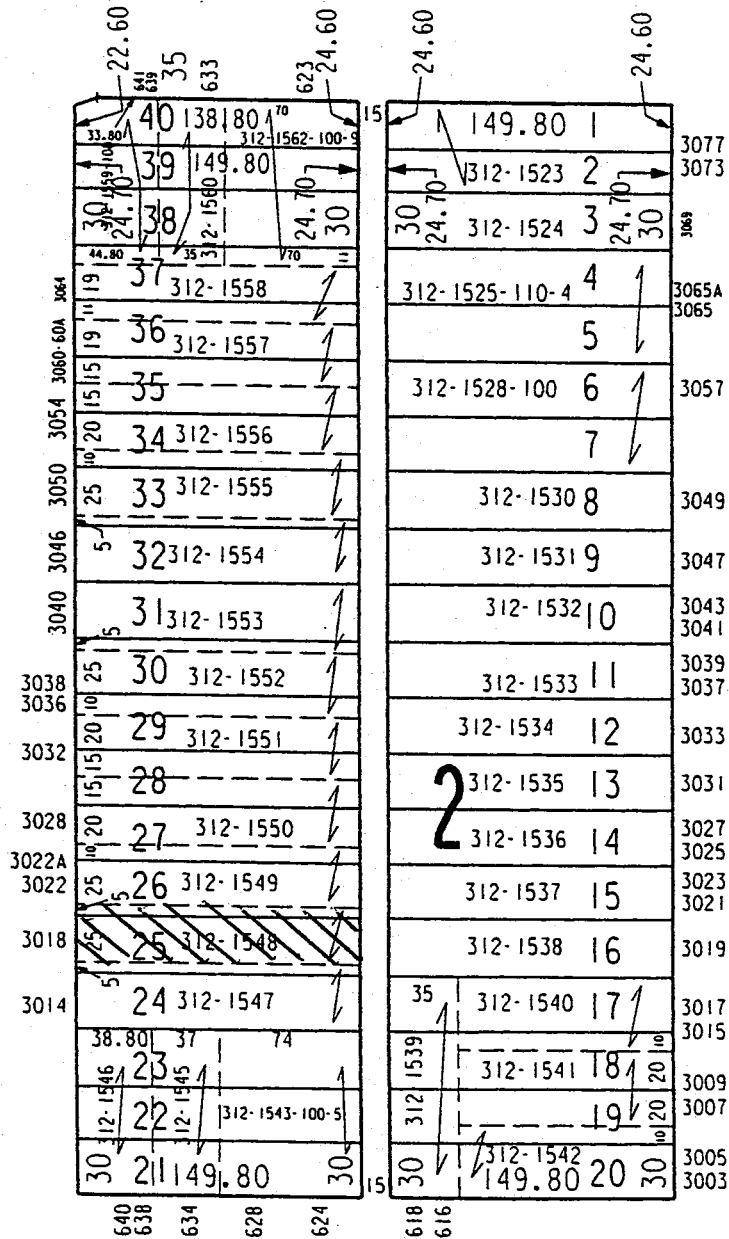


J. JOYS'S, SAM RINDSKOPF'S &
CHAS. HARPKE'S SUBDIVISION

W BURLEIGH ST

N 7TH ST

N 6TH ST



W CHAMBERS ST

SW 18-7-22

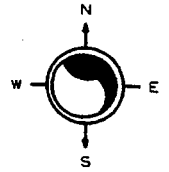
ATLAS P. 325

325

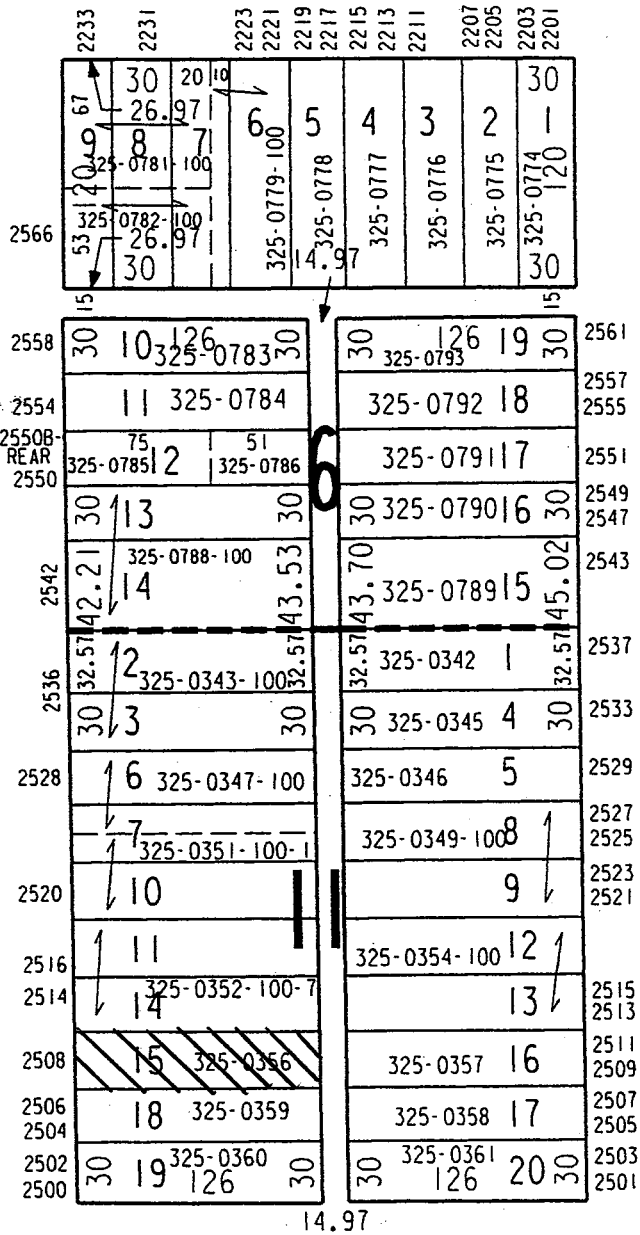
325-10

SCALE 1" = 10'

MANN, BURKE & SOMERS
SUBDIVISION



W CLARKE ST



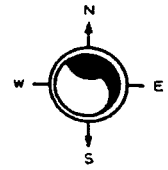
N 23RD ST

N 22ND ST

W WRIGHT ST

FRITZE'S SUBDIVISION

MANN, BURKE & SOMERS
 SUBDIVISION



W CLARKE ST

N 24TH ST

N 23RD ST

			2323	2317	2315	2309	2305		
2576	30	26.22	325-0760-100-5	6	5	4	3	2	30
2574	8	7							
2566	40	26.68	325-0762	325-0759	325-0758	325-0757	325-0756	325-0755-100-8	30
	15	30		14.97					30
2558	30	10	325-0763	125.75	30				2559
				125.86					2559B
2554		11	325-0764			325-0772	18		2555
2550		12	325-0765			325-0771	17		2551
2548	30	13	325-0766			325-0770	16		2549
2546	30								2547
2542A REAR	32.57	38.72	325-0767	57.19					2543
		14	325-0768						
2542	69	126.37		40.04		325-0769-100-4	15		
2536	2	126	325-0363	57.37					
2532A	30	3	325-0364-100-2	30		325-0365	4		2533
2532		6							
2526		7	325-0368			325-0366	5		2531
2524						325-0369-100-X	8		2525
2520		10	325-0371						
2518		11							
2512		14	325-0374			325-0372-110-3	13		2519
2508		15	325-0375			325-0376	16		2517
2506	100	18	100			325-0377	17		2511
2504			325-0378						2505
2502	30	19	325-0380			325-0381	20		2501
2500		126				126	20		
				2320	14.97				

301

30' NO VEH. ACC.

W WRIGHT ST
 FRITZE'S SUBDIVISION