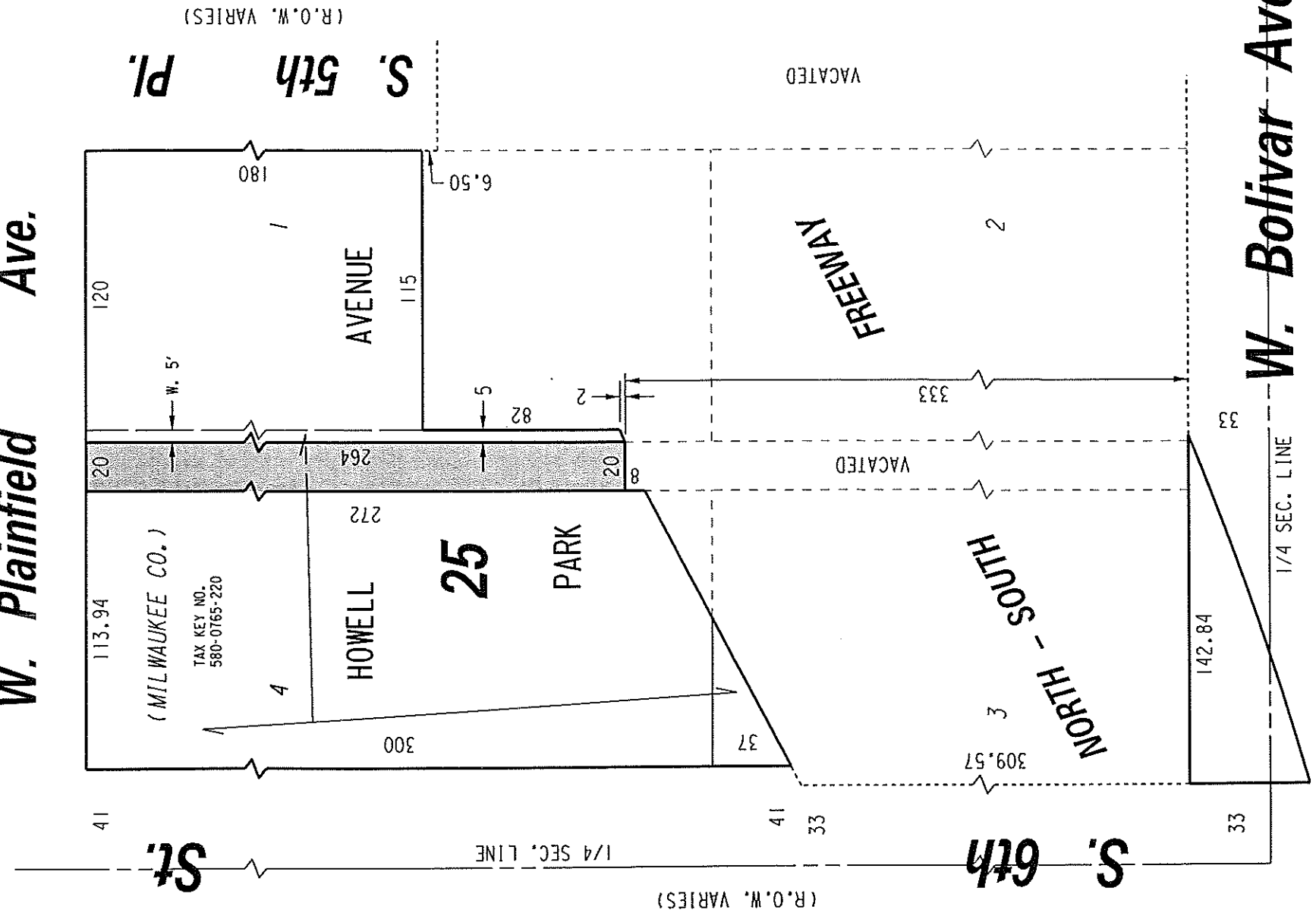


580

N.E. 1/4 SEC. 20, T.6N., R.22E.

W. Plainfield Ave.
(60' R.O.W.)



UNIMPROVED PUBLIC
ALLEY PROPOSED
TO BE VACATED

EXHIBIT "A"
FILE NO. 111613
INFRASTRUCTURE SERVICES DIVISION
MILWAUKEE, WISCONSIN

ASSIGNED TO: W.E. FUCHS
DRAWN BY: W.E.F.
PROJECT/GRANT NO.: WK52337322
APPROVED BY:

CH'K'D. BY: W.E. FUCHS
DATE: April 20, 2012
SCALE: 1" = 60'

13TH ALDERMANIC DISTRICT
ALD. TERRY L. WITKOWSKI

Marcia Cornell
CENTRAL DRAFTING & RECORDS MANAGER

[Signature]
CITY ENGINEER