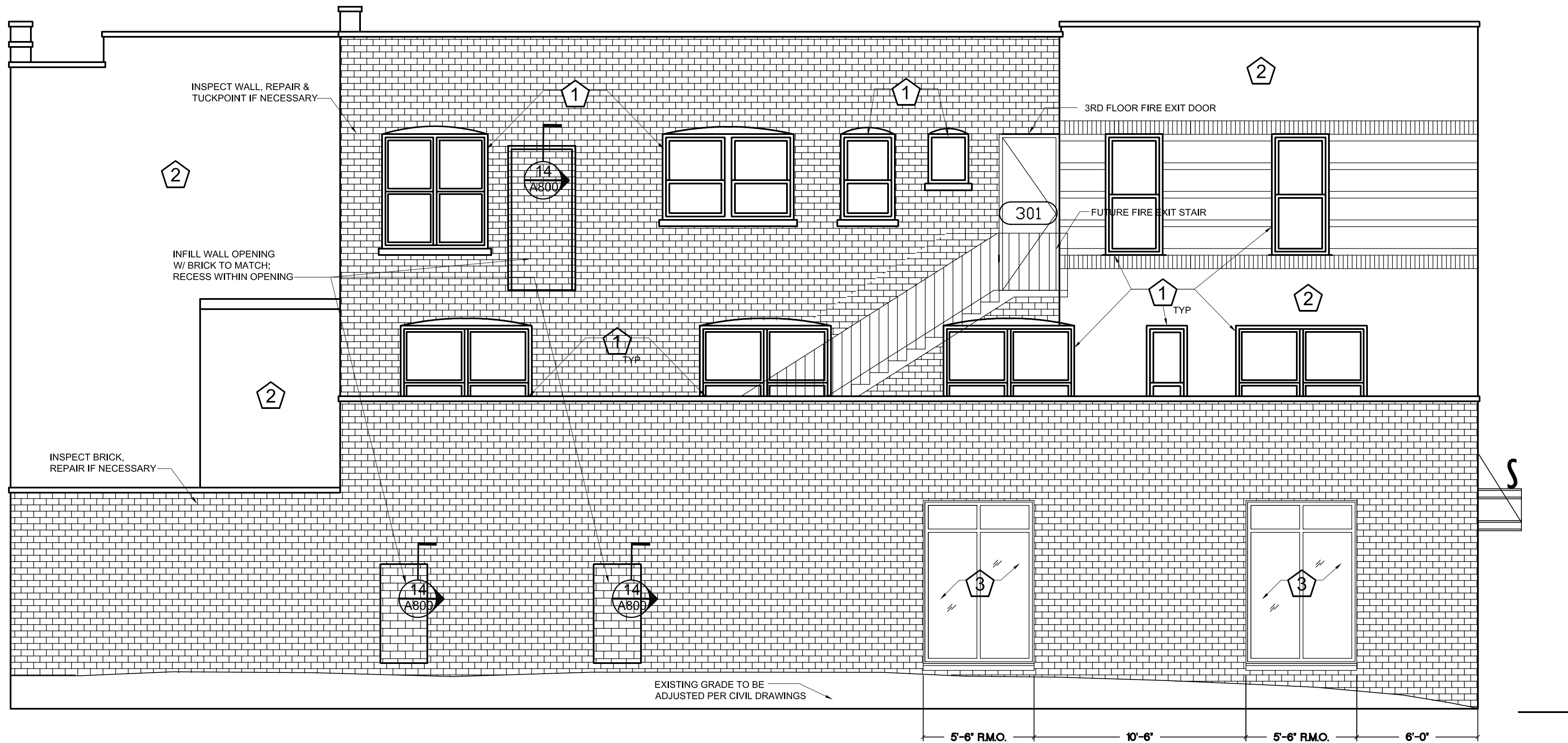
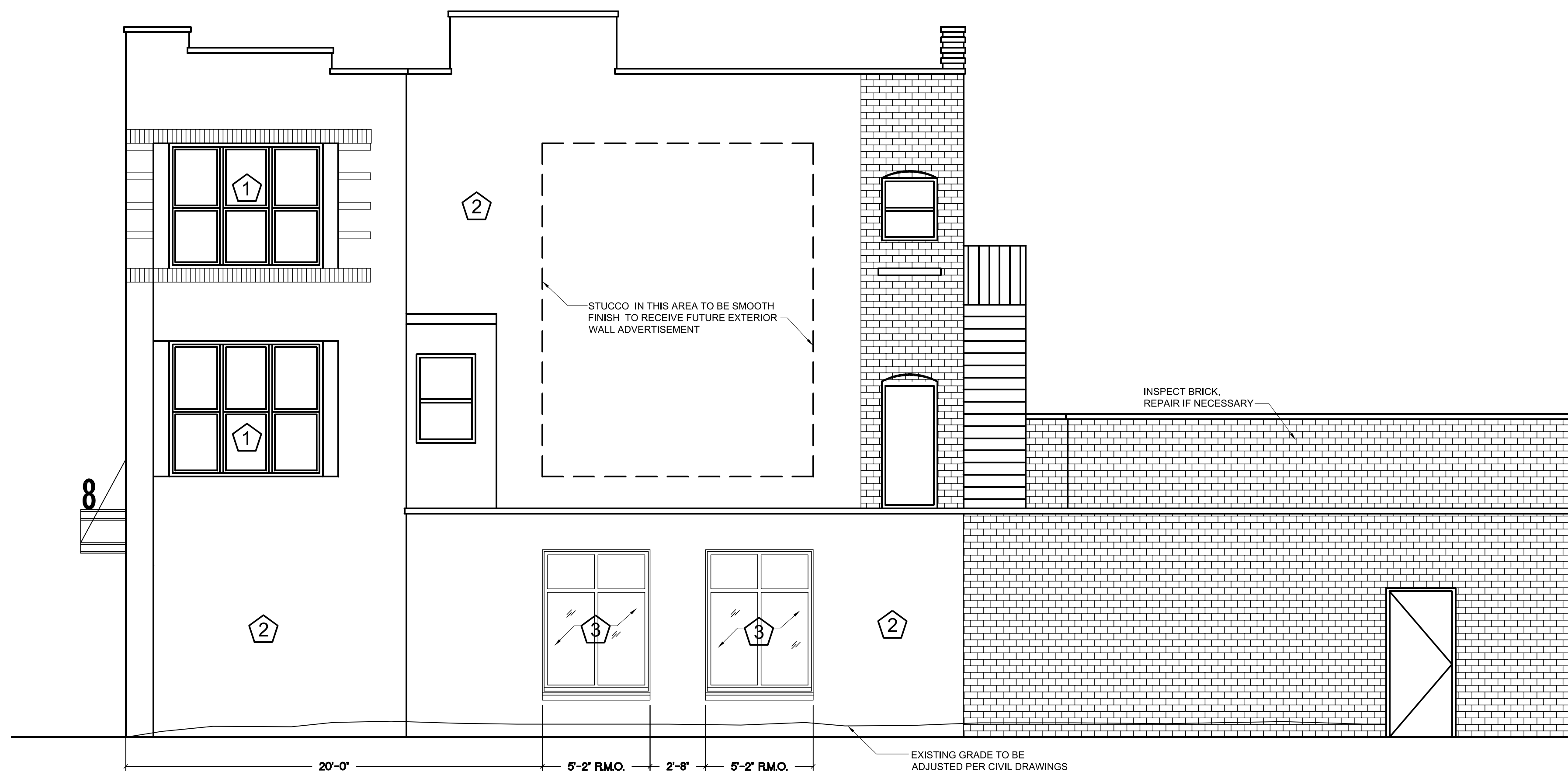


AMERICAN DESIGN
INCORPORATED
Architectural Services

2821 N. 4th St. Suite 537
Milwaukee, WI 53212
Phone 414.263.5020
Facsimile 414.263.5045



1 EAST ELEVATION
SCALE: 1/4"=1'-0"



2 SOUTH ELEVATION
SCALE: 1/4"=1'-0"

GENERAL NOTES:

- EXAMINE IN PLACE WINDOW UNITS AND RESET OVER FLASHING AS MAY BE REQUIRED.
- VERIFY EXISTING 2ND & 3RD FLOOR OPENINGS, COORDINATE AND INSTALL OWNER PROVIDED WINDOW UNITS WITH FLASHING AS MAY BE REQUIRED.

KEY NOTES:

1. EXAMINE, FLASH AND RESET ALL INSTALLED WINDOWS, AS MAY BE REQUIRED, TYP.
2. REPAIR STUCCO SUBSTRATE AS REQUIRED. CLEAN AND RESURFACE ALL STUCCO SURFACES, TO MATCH PHOTO, TYP.
3. PREPARE OPENINGS AND INSTALL NEW, DARK BRONZE ANODIZED ALUMINUM STOREFRONT SYSTEM WITH CLEAR LOW "E" THERMO PANE GLAZING UNLESS OTHERWISE NOTED.
4. ART GLASS TRANSOMS: THERMO PANE GLAZING WITH "SPOTLIGHT" ART GLASS ON OUTSIDE PANEL WITH PATTERN TO INSIDE AIRSPACE.
5. SAFETY GLASS: THERMOPANE TEMPERED GLASS PER CODE.
6. STONE CAVITY WALL ASSEMBLY 2 1/2" LANNON STONE, (FLAMED FINISH W/ HONED SILLS), WITH STAINLESS STEEL CLIPS OVER 1" AIR SPACE AND SPRAY ON AIR & WATER BARRIER OVER CMU WITH STUD FURRING, BATT INSULATION, VAPOR BARRIER & 5/8" GYPSUM BOARD, (SEE SECTIONS & DETAILS)
7. 1" LANNON STONE VENEER ADHERED TO EXISTING MASONRY SUBSTRATE. MATCH STONE CAVITY WALL SYSTEM COARSING AND COLOR.

Project

27TH & WELLS
SOHI BUILDING

Sheet Title

ELEVATION -
EAST, SOUTH

Revisions

| Item | Date | By |
|------|------|----|
| | | |

Project Architect

JIM PIWONI

Drawn By

ZACH RASMUSSEN

Project No.

200637

Date

MARCH 29, 2010

Sheet No.

A501