



North Office Building Modernization

SBE and RPP Participation Quarterly Performance Report

Presentation to: Zoning, Neighborhoods & Development Committee Meeting

May 14, 2024

Rebecca Villegas

Project Executive Sponsor & Vice President Enterprise Compliance, Northwestern Mutual

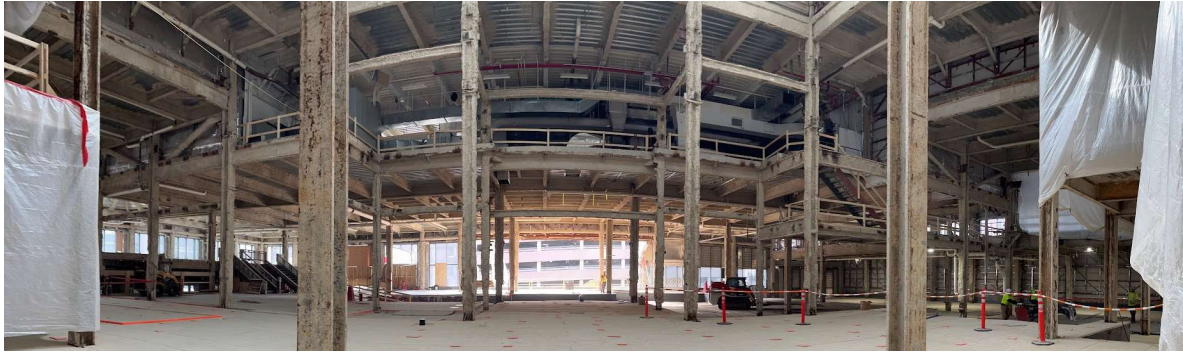
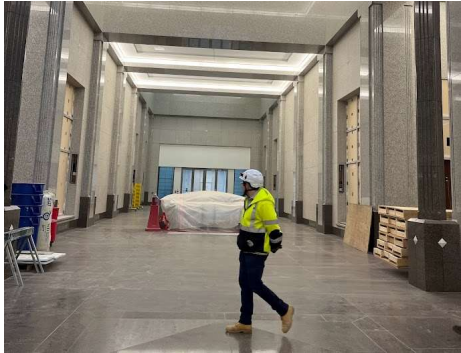
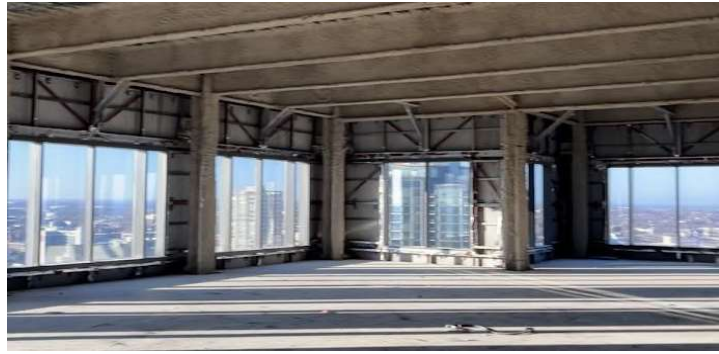
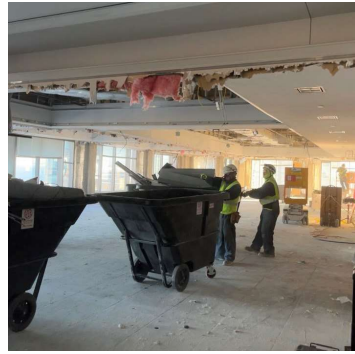
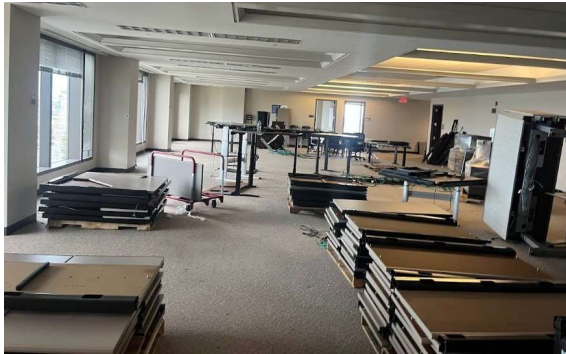
Carla Cross

President & CEO, Cross Management Services, Inc.

Alicia Dupies

Vice President, Gilbane Building Company

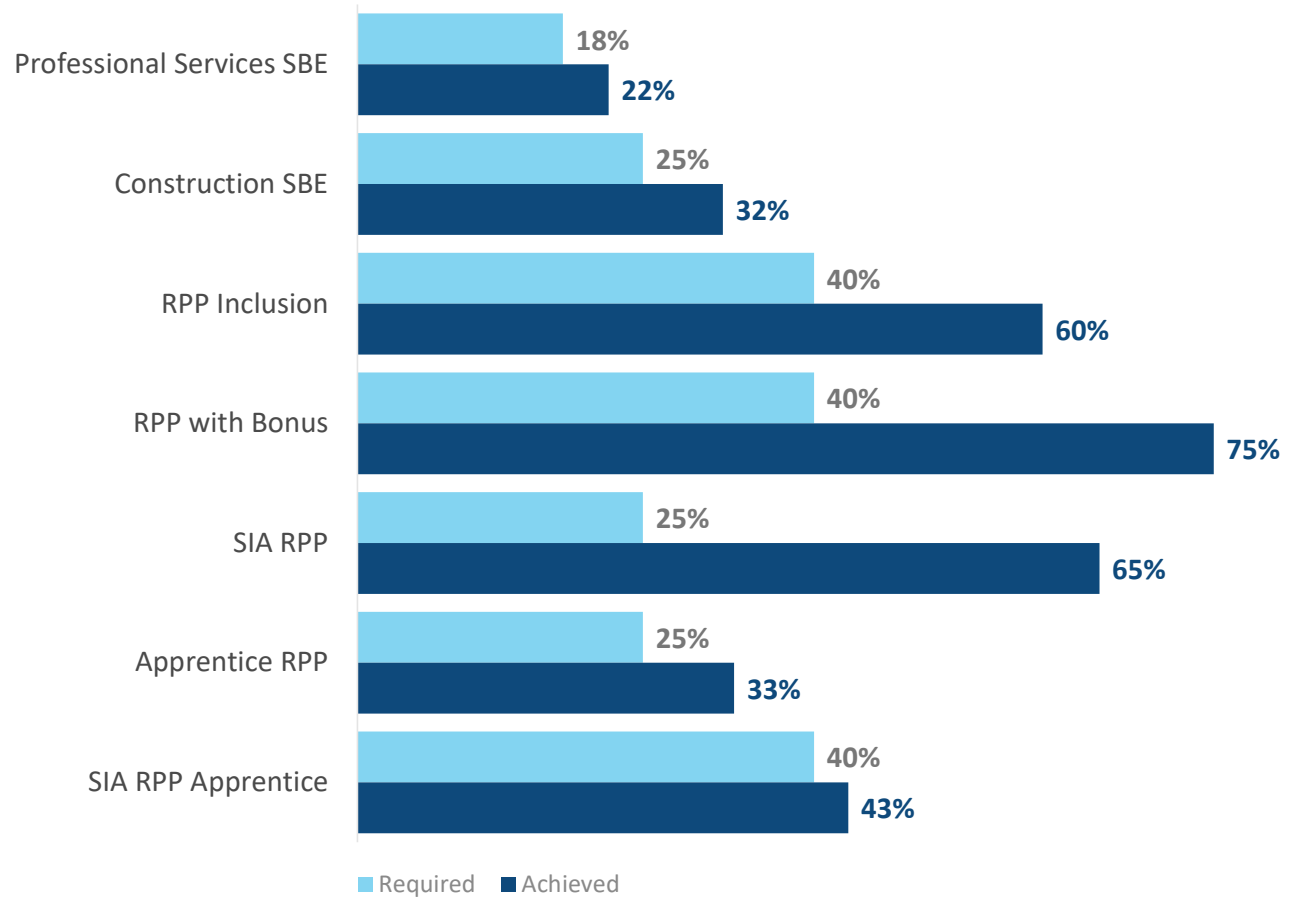




Surpassing Hiring and Contracting Goals



SBE & RPP Inclusion Summary through March 31, 2024



Community Engagement: Construction Information Sessions



You're Invited

Community Partner Workforce Engagement Kick-off

Join Northwestern Mutual, Gilbane | CG Schmidt, and Community Partners for an Engagement Kick-off Event

This event will be a collaborative platform to discuss how we can best engage the local workforce on the Northwestern Mutual North Office Building Modernization Project. We will focus on the Special Impact Areas (SIA) of Milwaukee, where we aim to create positive and lasting benefits for our local communities. We will discuss the path of an individual from interest to prepared to engaged. **Key topics will include informing residents of the opportunity, understanding barriers, identifying available solutions, and setting next steps for recruitment.**

Tuesday,
January 23rd

2:00 p.m. – 3:30 p.m.
Refreshments will be provided

 **Location**

WRTP | BIG STEP
3841 W Wisconsin Ave
Milwaukee, WI 53208

RSVP

Please RSVP by January 16th at 5:00 p.m.

Upon arrival, please check-in at the security desk.

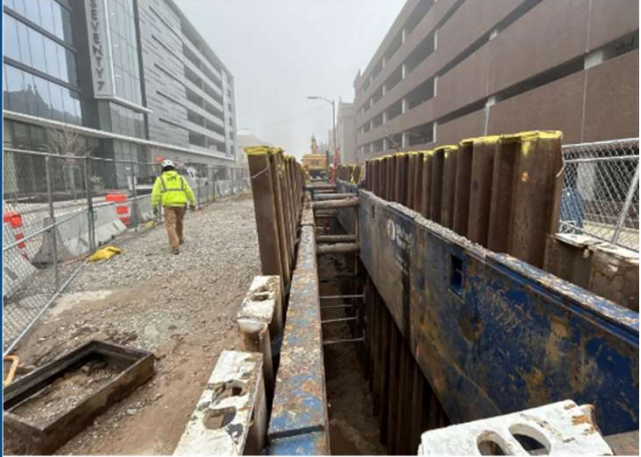
Click [HERE](#) for more information about
Northwestern Mutual North Office Building
Modernization Project



Community Outreach Events



Partner Spotlight:
Veit



An aerial photograph of the Milwaukee skyline at sunset. The Pritzker Pavilion, a white, sail-like structure, is in the foreground. Behind it are several skyscrapers, including the Northwestern Mutual building. The sky is a mix of blue and orange, and the water of the Milwaukee River is visible in the bottom right.

PROUD OF OUR COMMUNITY

Proud to call Milwaukee Home