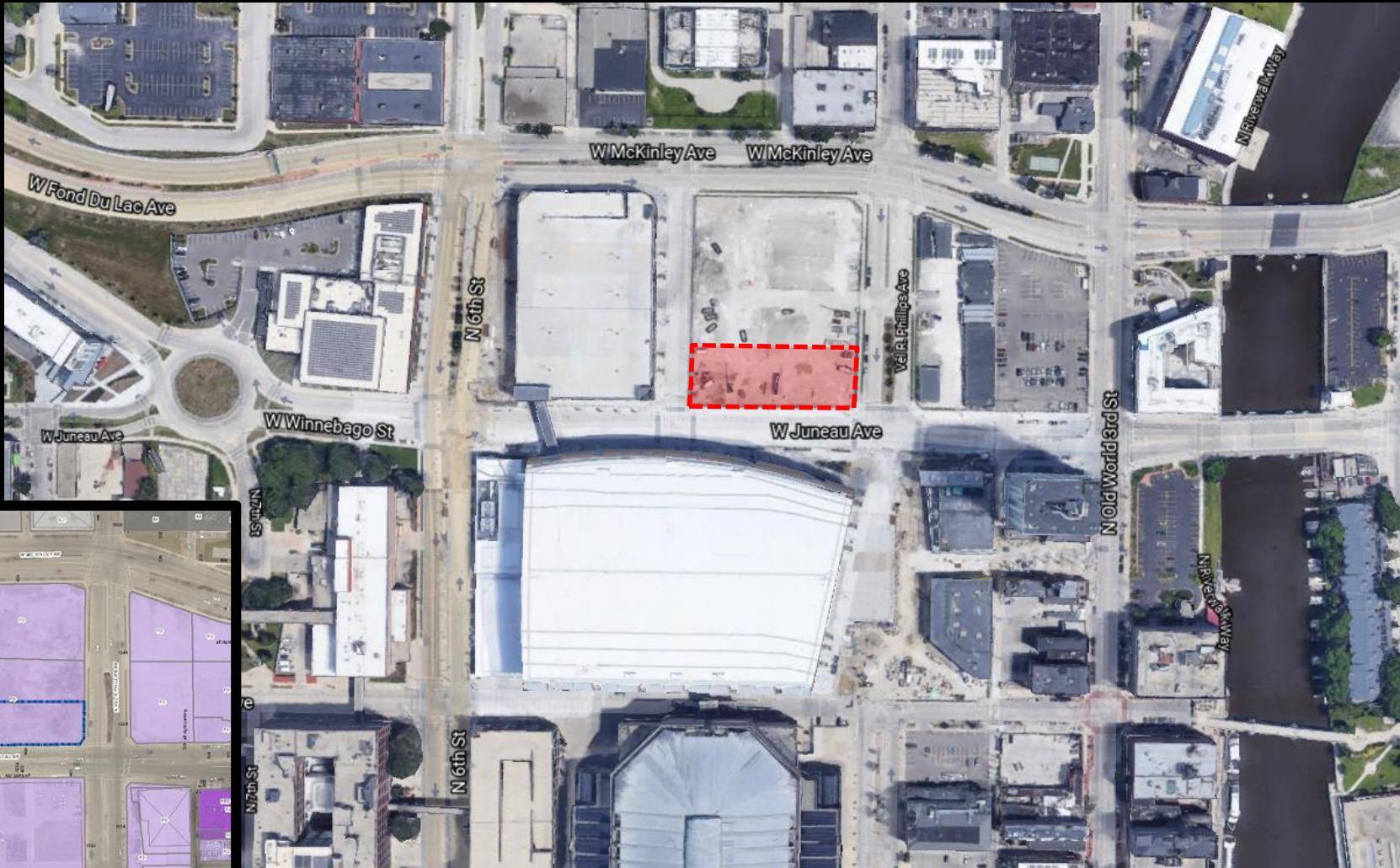
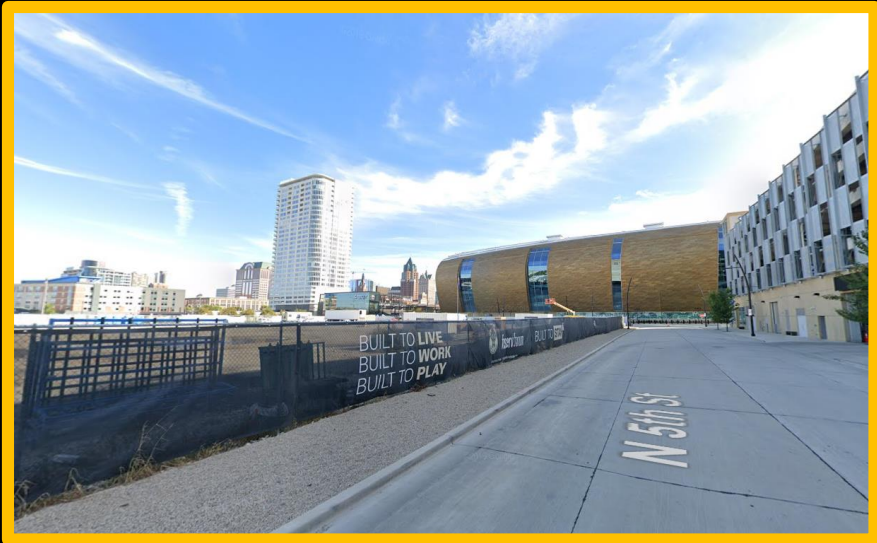


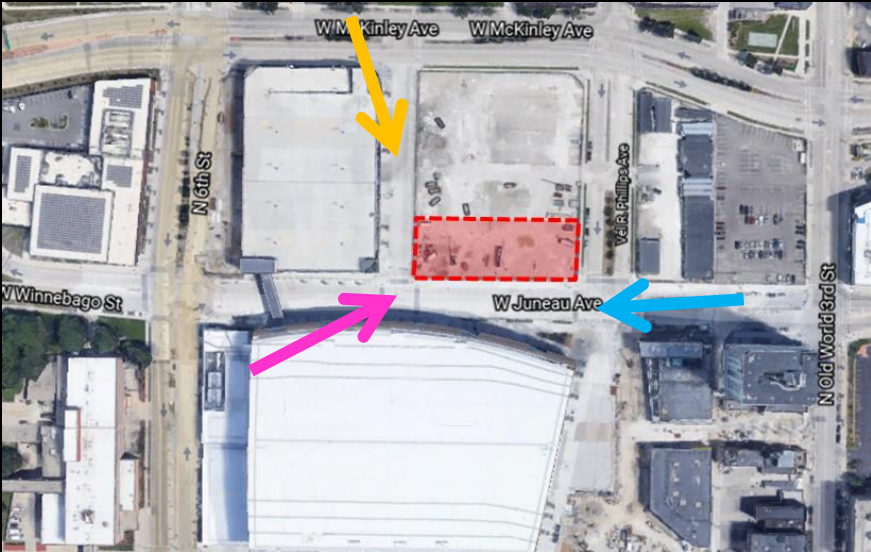
File No. 201351. A substitute ordinance relating to the change in zoning from General Planned Development, GPD, to a Detailed Planned Development, DPD, known as Block 6 Arena Master Plan, Phase 1, for development of a hotel on the southern portion of 420 West Juneau Avenue, on the north side of West Juneau Avenue between North Vel R. Phillips Avenue and North 5th Street, in the 6th Aldermanic District.



File No. 201351. Site Context Photos.



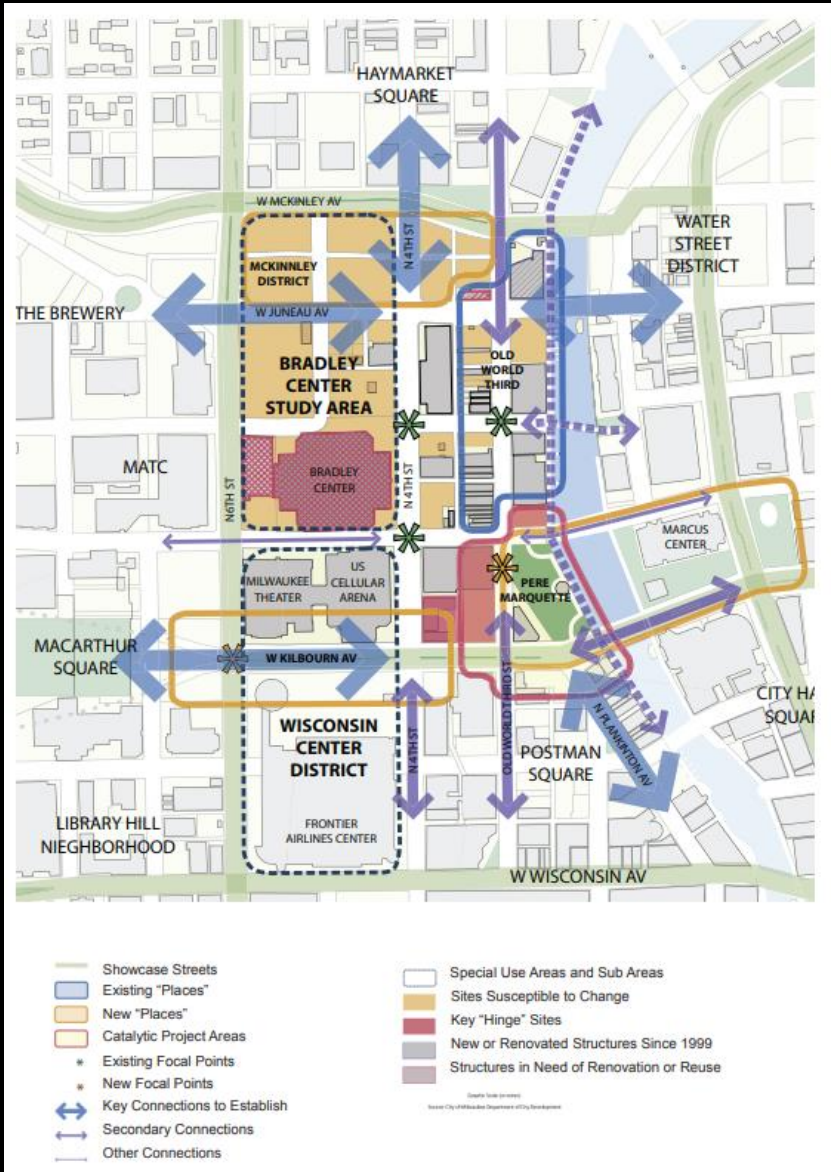
View from North 5th Street looking south-east



View from 5th and Juneau looking north-east

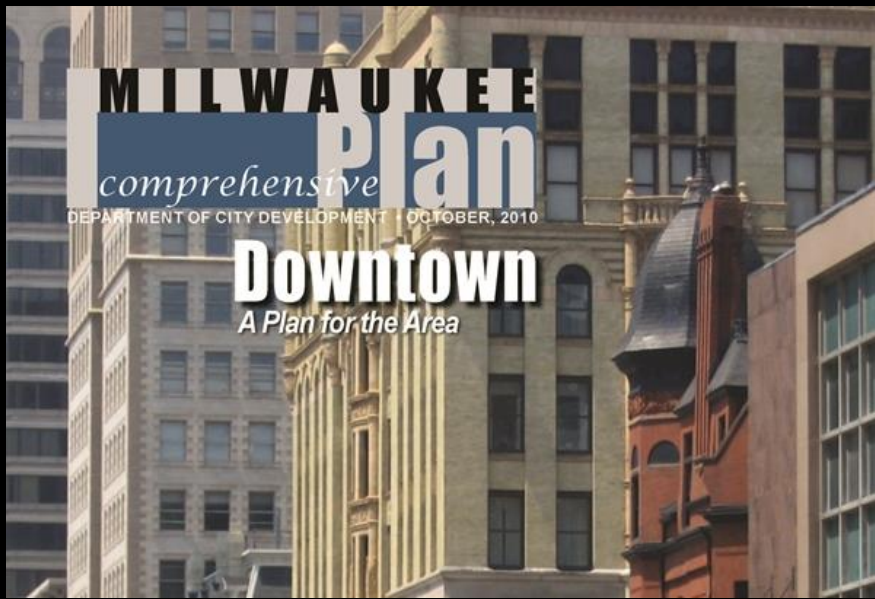


View from Juneau and Vel R. Phillips looking west



Downtown Plan

- The subject site is within the Old World Third Street sub-area of the Downtown Plan which promotes the redevelopment of the former Park East Freeway land and supports the development of a hotel at this site.
- The proposed DPD is consistent with the Downtown Area Plan.



AUTOGRAPH COLLECTION[®] HOTELS

Part of 420 West Juneau Avenue

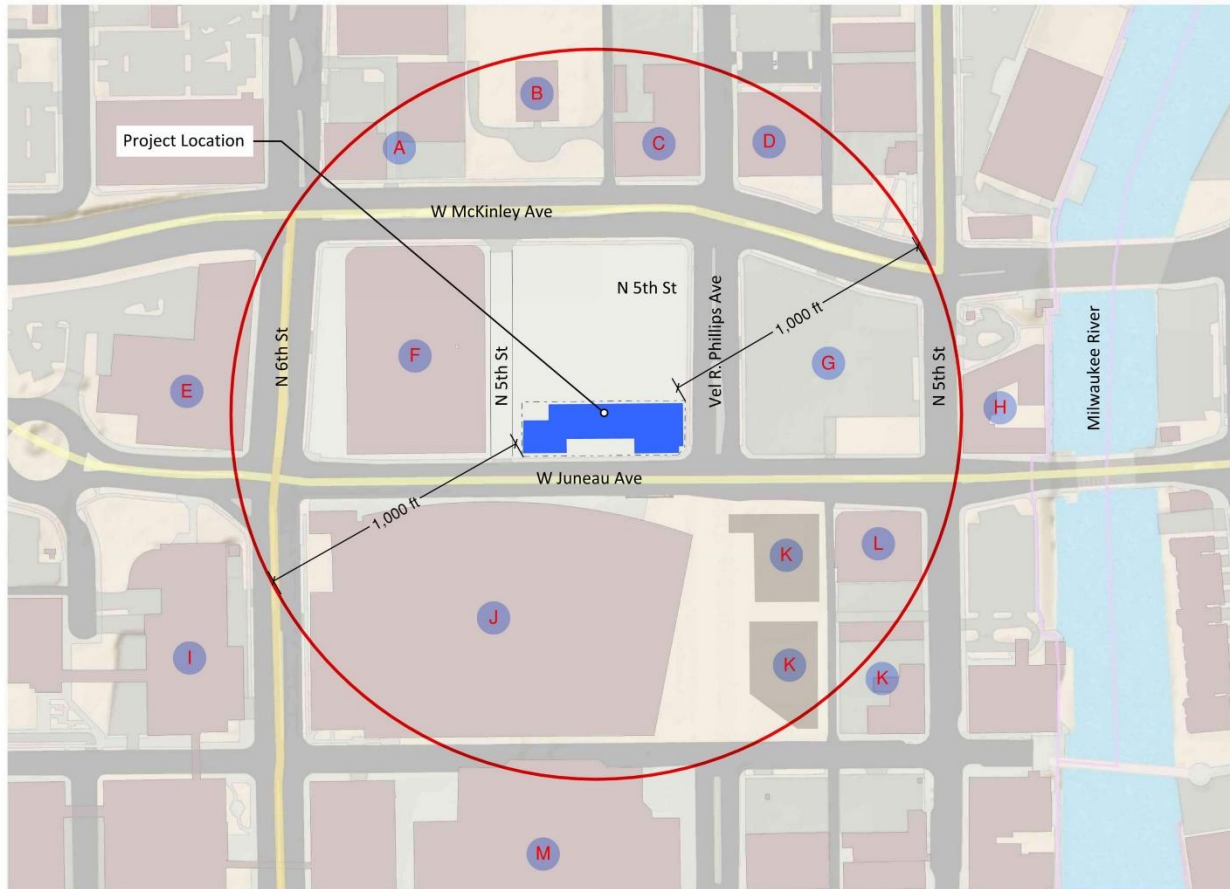
Milwaukee, WI

DPD Zoning Submittal for
Portion of Block 6 of Milwaukee Bucks
Arena Development - GDP

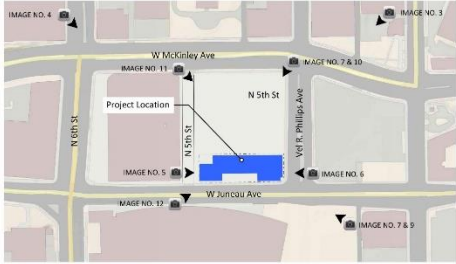
03-29-2021



AUTOGRAPH
COLLECTION[®]
HOTELS



- | | | | |
|-------------------------------------|---|-------------------------------------|---|
| A Retail | D Haymarket Lofts | G Block 5 Future Development | J Fiserv Forum |
| B Electrical Substation | E Froedtert McKinley Health Center | H Aloft Hotel Downtown | K Retail/Restaurants |
| C National Hardware Building | F 5th Street Parking Garage | I MATC | L The Moderne/Carson's |
| | | | M Block 2 & 3 Future Development |



AERIAL VIEW OF AREA



3. SOUTHWEST BIRD'S EYE VIEW OF AREA



4. SOUTHEAST BIRD'S EYE VIEW OF AREA



5. NORTH-EAST AERIAL VIEW OF SITE



6. NORTHWEST AERIAL VIEW OF SITE



7. NORTHWEST AERIAL VIEW OF SITE



8. SOUTHWEST AERIAL VIEW OF SITE



9. LOOKING NORTHWEST - CORNER OF VEL R. PHILLIPS AVE & W JUNEAU AVE



10. LOOKING SOUTHWEST - CORNER OF VEL R. PHILLIPS AVE & W MCKINLEY AVE



11. LOOKING SOUTHEAST - CORNER OF W MCKINLEY AVE AND N 5TH ST

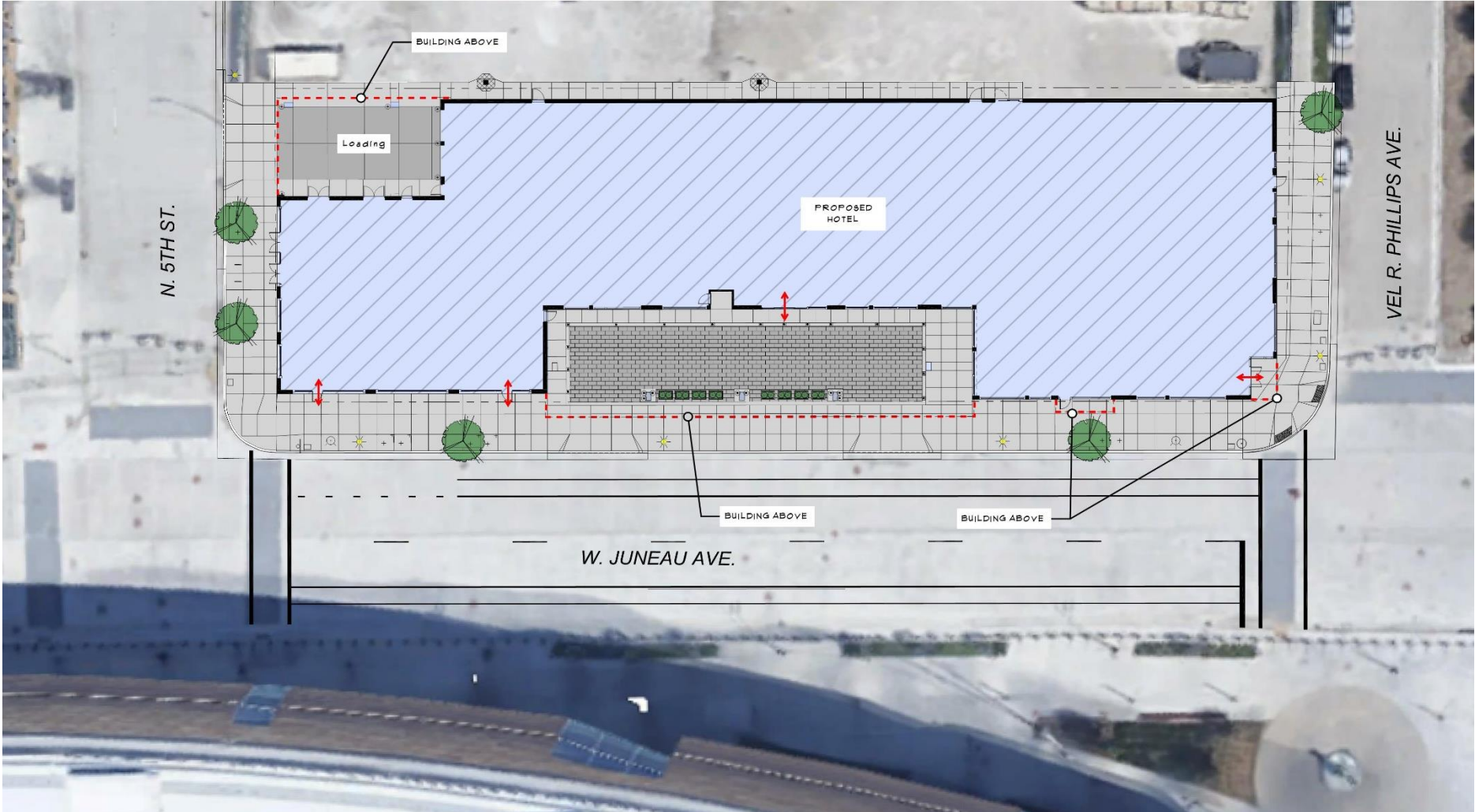


12. LOOKING NORTHEAST - CORNER OF W JUNEAU AVE AND N 5TH ST



Site Photos

**AUTOGRAPH
COLLECTION®
HOTELS**



N. 5TH ST.

VEL R. PHILLIPS AVE.

W. JUNEAU AVE.

BUILDING ABOVE

Loading

PROPOSED HOTEL

BUILDING ABOVE

BUILDING ABOVE

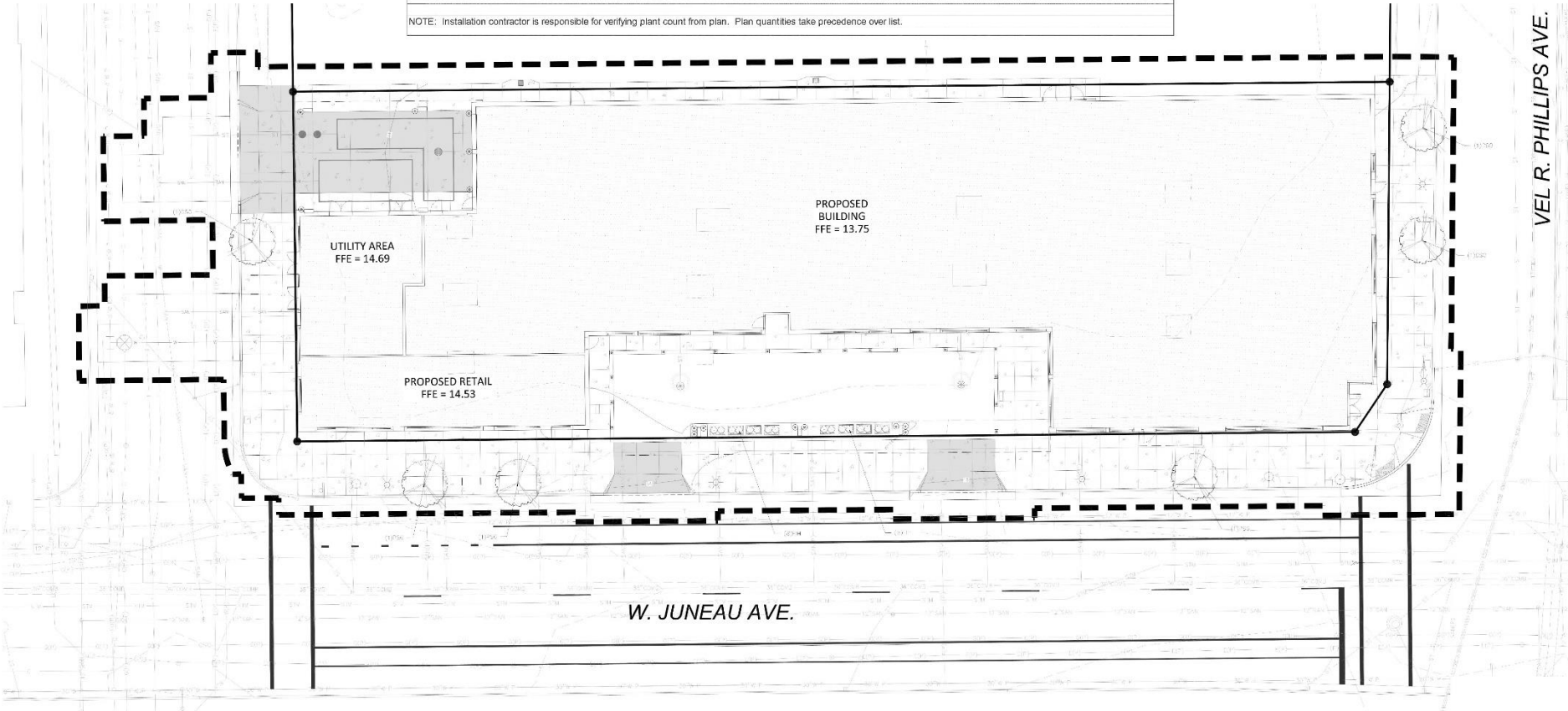


Site Plan

AUTOGRAPH
COLLECTION®
HOTELS

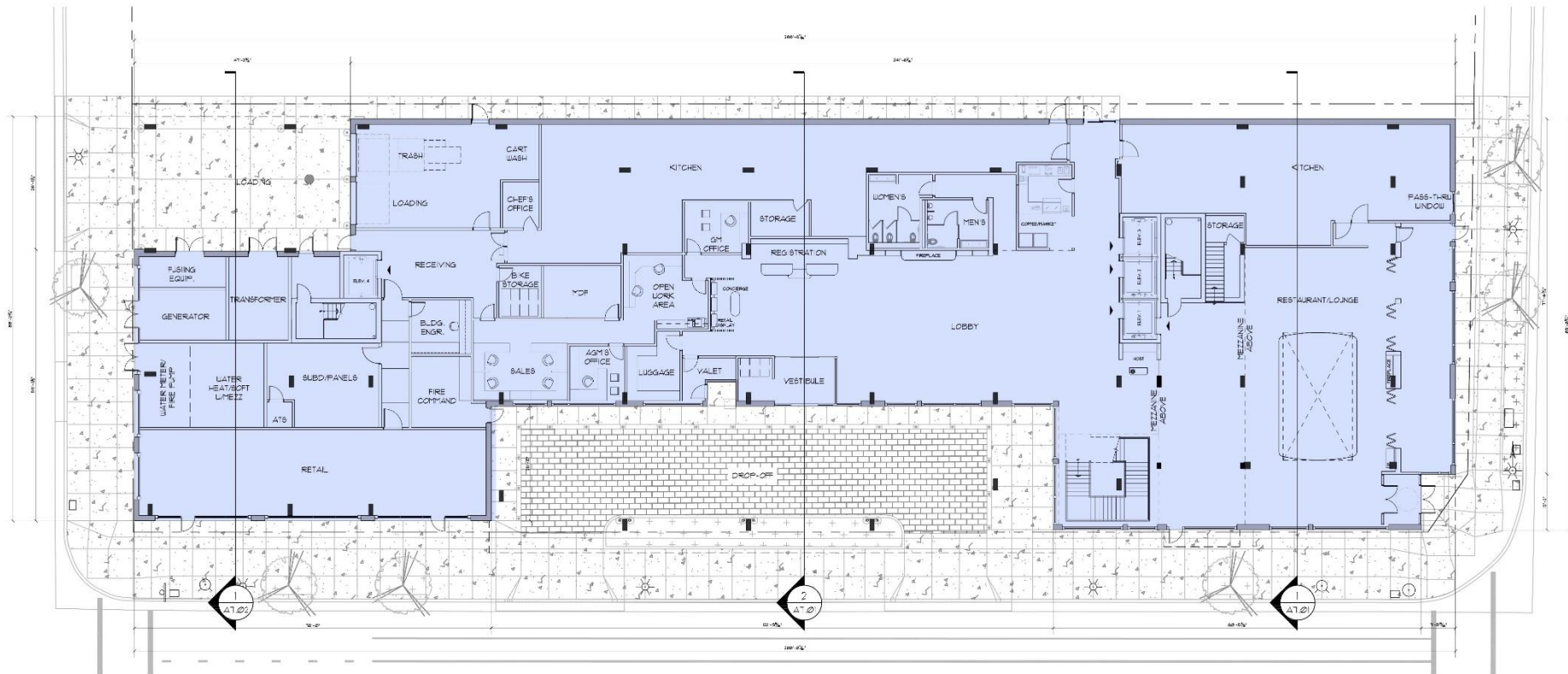
Plant Schedule

Symbol	Scientific Name	Common Name	Quantity	Spacing	Install Size	Size
						Maturity in ft. (Height/Spread)
Deciduous Trees:						
CSO	Quercus robur 'Crimschmidt' PP91C3	Crimson Spire Oak	3	Per Plan	3" caliper B&B	45/35'
PSG	Ginkgo biloba 'Princeton Sentry'	Princeton Sentry Ginkgo	3	Per Plan	3" caliper B&B	45/15'
Evergreen Shrubs:						
GBB	Buxus microphylla var. japonica 'Green Beauty'	Green Beauty Boxwood	8	Per Plan	#3 cont.	4/4'
Perennials						
FIH	Hosta x Fire and Ice	Fire and Ice Hosta	16	Per Plan	1 gal.	12-18"/24"
NOTE: Installation contractor is responsible for verifying plant count from plan. Plan quantities take precedence over list.						



Landscape Plan

AUTOGRAPH
COLLECTION®
HOTELS

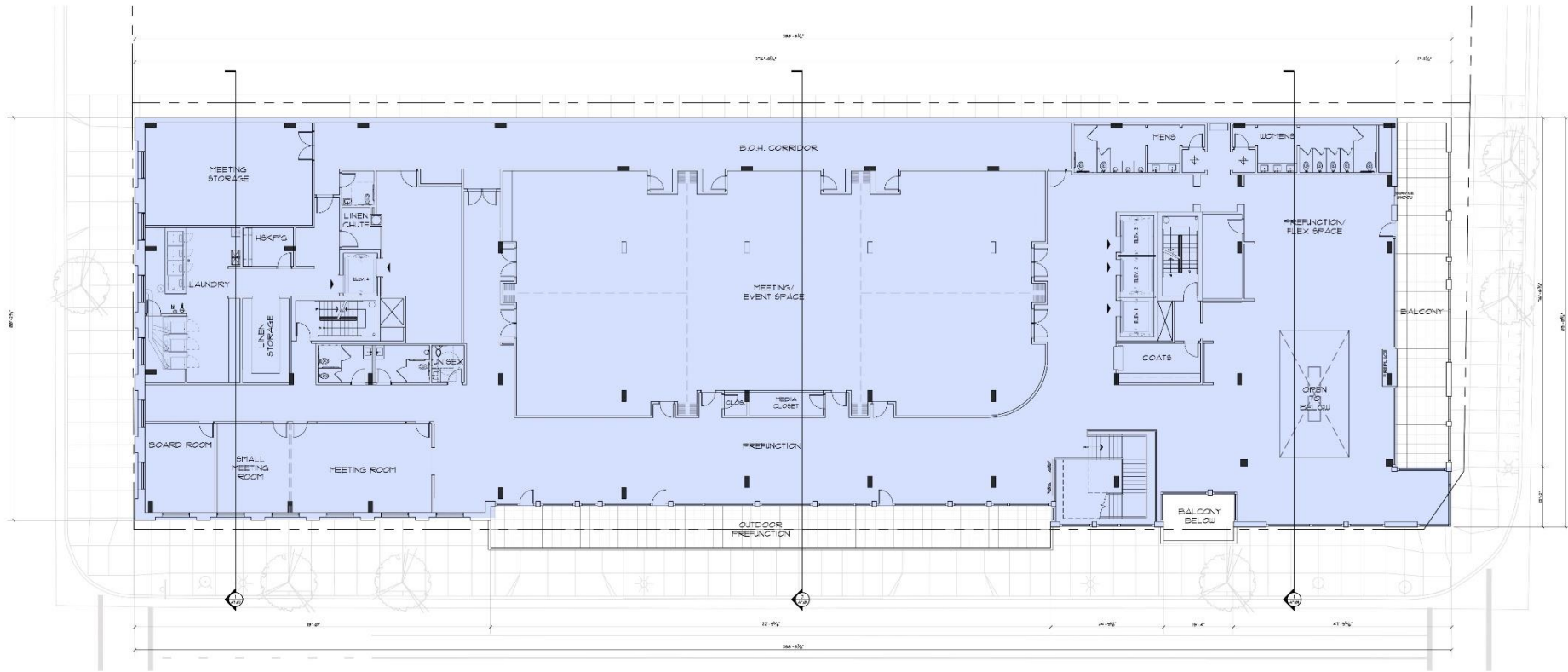


FIRST FLOOR PLAN



First Floor Plan

AUTOGRAPH
COLLECTION®
HOTELS

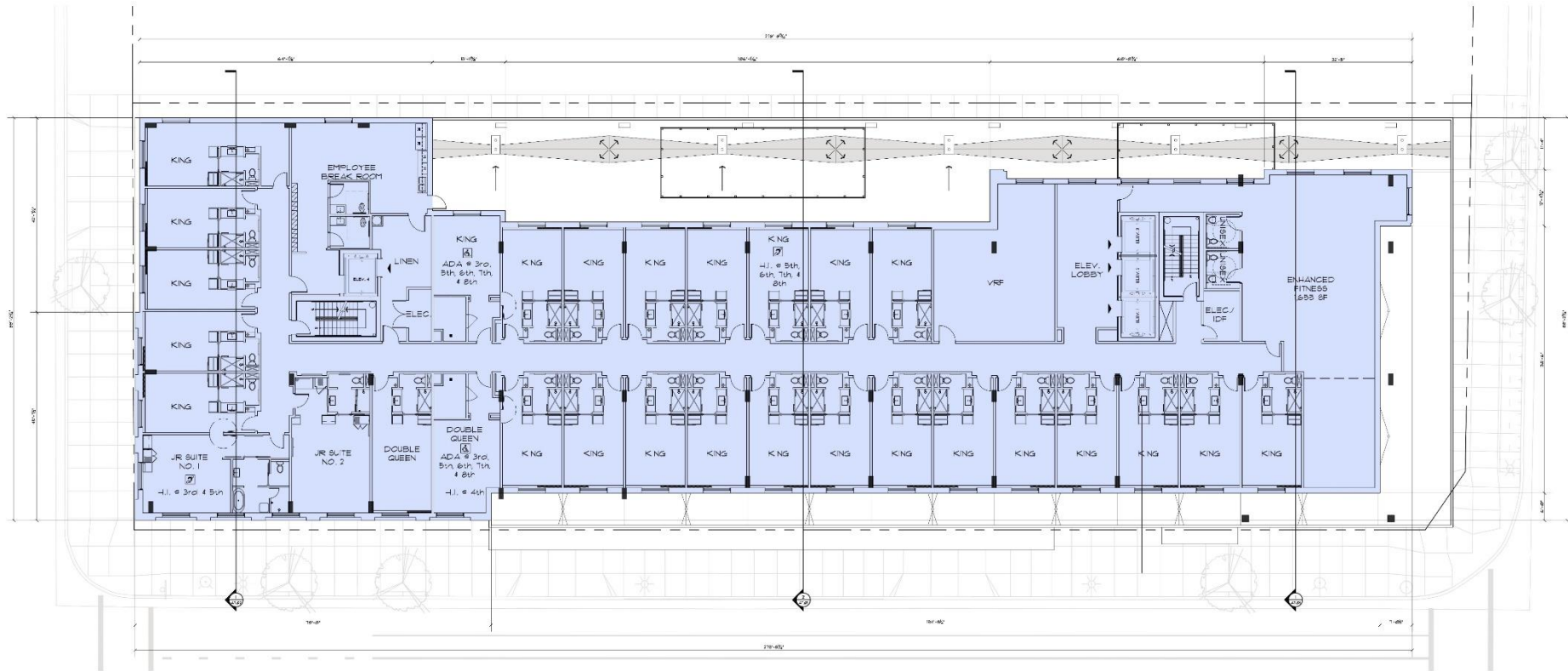


 SECOND FLOOR PLAN



Second Floor Plan

**AUTOGRAPH
COLLECTION®
HOTELS**

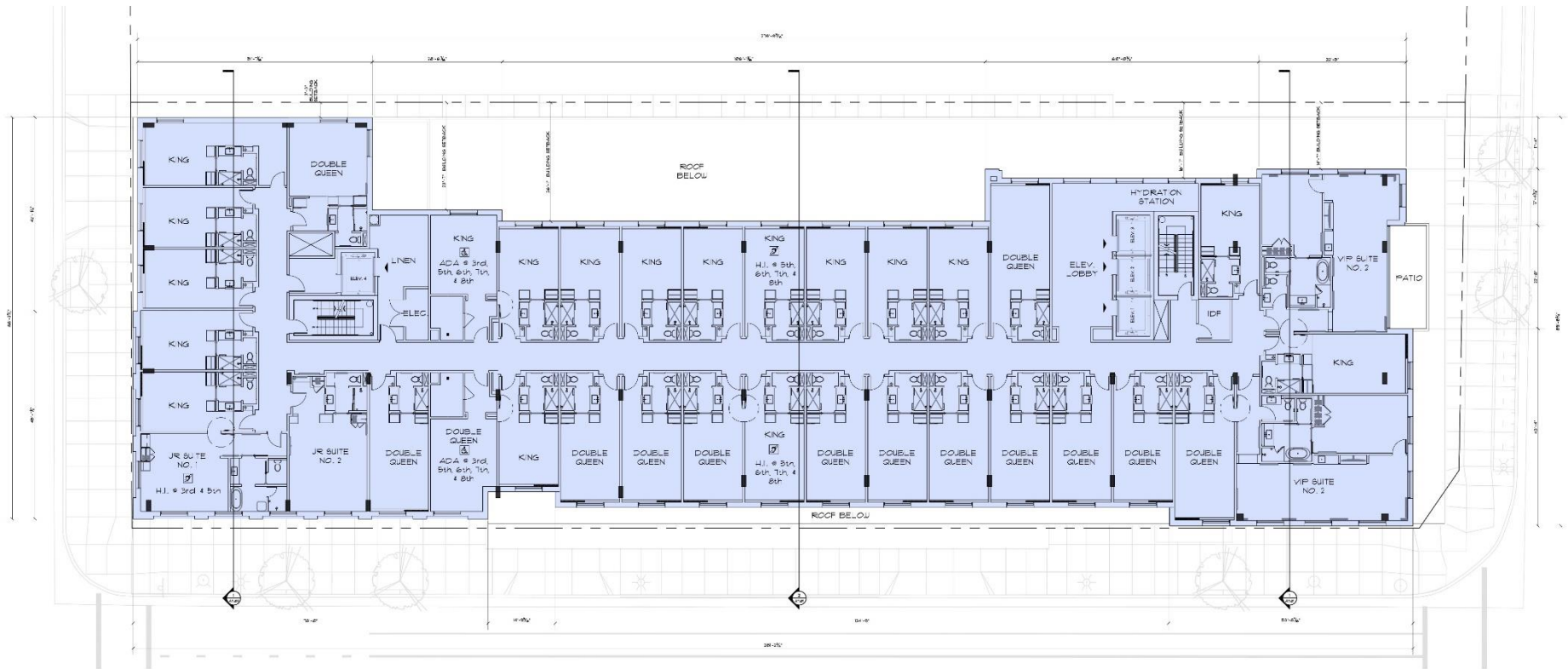


THIRD FLOOR PLAN



Third Floor Plan

**AUTOGRAPH
COLLECTION[®]
HOTELS**

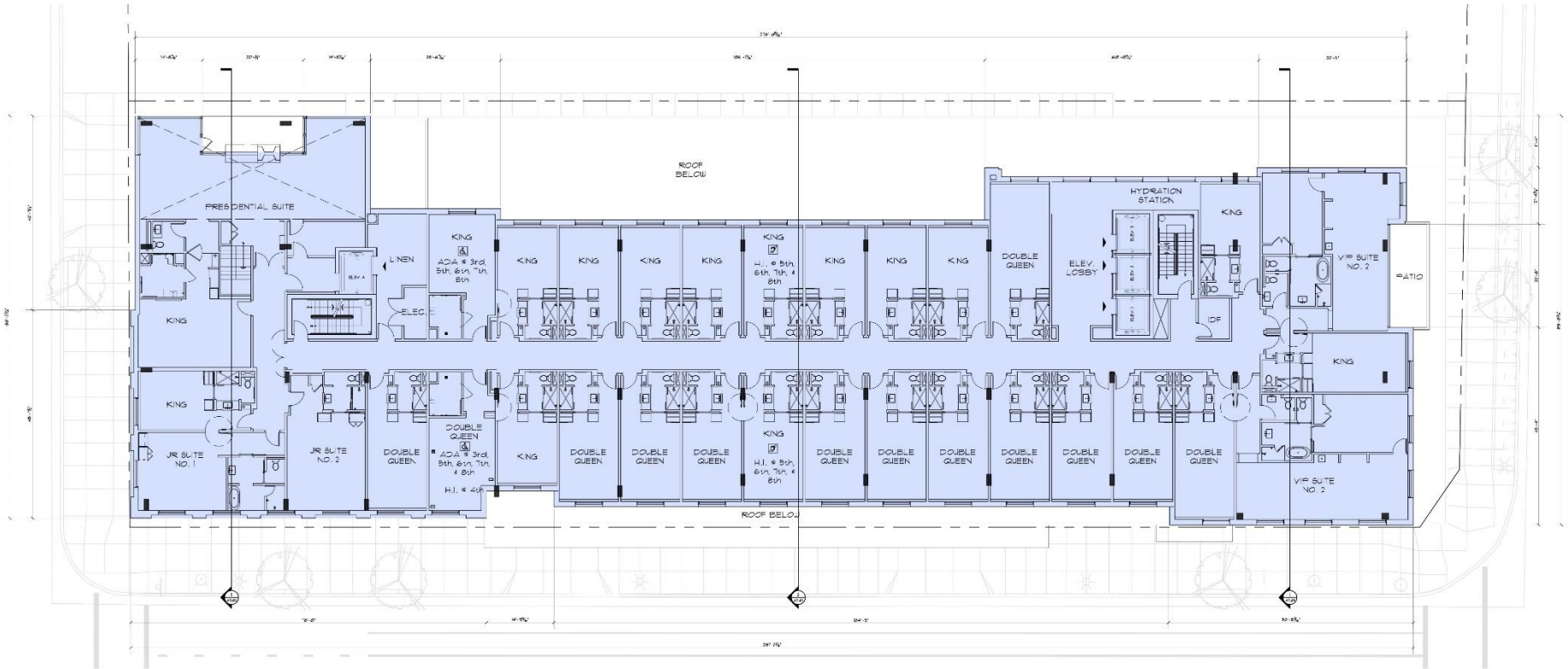


5TH THRU 7TH FLOOR PLAN

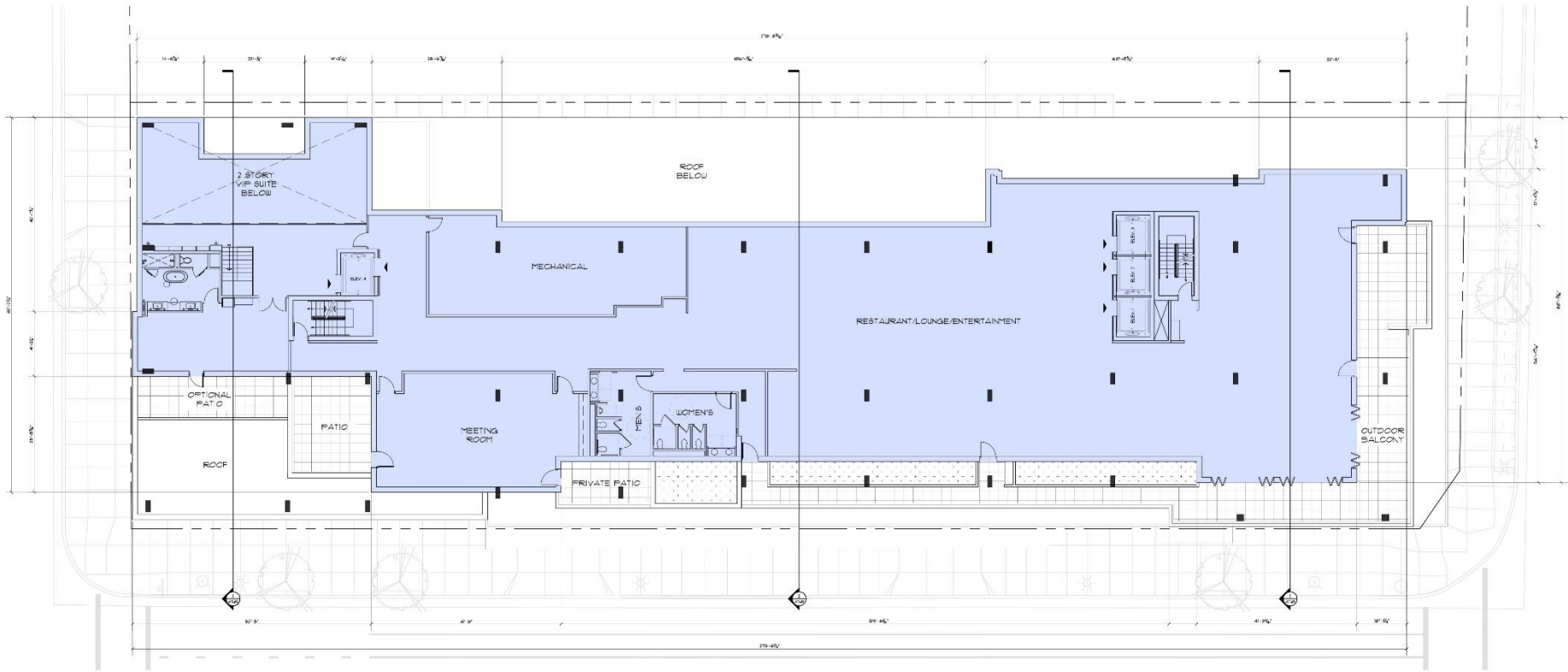


Typical Level Floor Plan

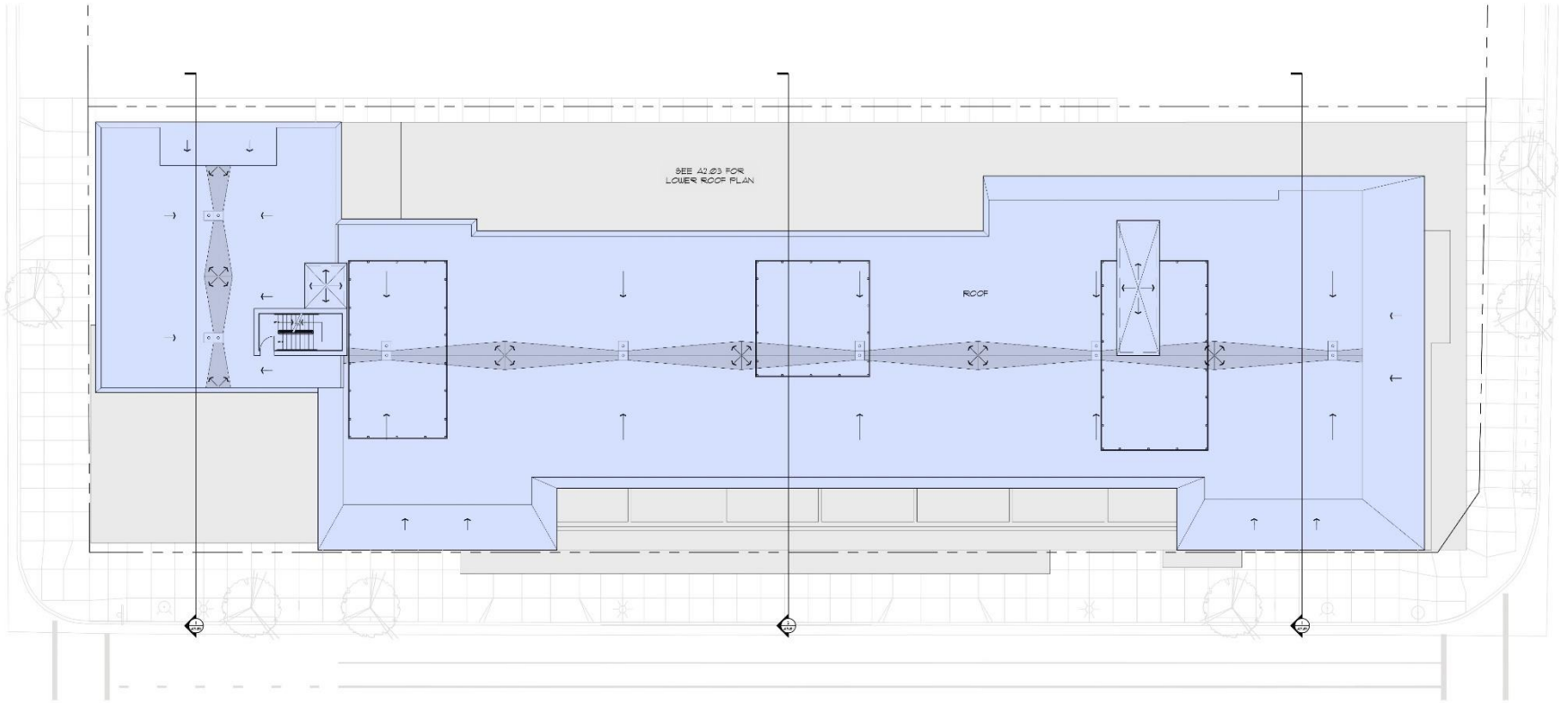
**AUTOGRAPH
COLLECTION[®]
HOTELS**



 EIGHTH FLOOR PLAN



 NINTH FLOOR PLAN









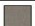
Architectural Rendering

**AUTOGRAPH
COLLECTION®
HOTELS**





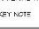



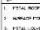


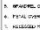












Architectural Rendering

**AUTOGRAPH
COLLECTION®
HOTELS**

MATERIAL DESCRIPTION		ELEVATION SYMBOLS	
 BRICK-01: B1 BRICK OR BRICK VENEER	 GLAZING-02: GL2 GLASS WALLING SYSTEM	 BRIDGE TAG	
 BRICK-02: B2 BRICK OR BRICK VENEER	 GLAZING-03: GL3 ALUMINUM FRAME WINDOW WITH ANODIZED BLACK FINISH	 MATERIAL TAG	
 BRICK-03: B3 BRICK OR BRICK VENEER	 GLAZING-04: GL4 STRUCTURAL SILICONE CURTAIN WALL	 KEY NOTE	
 CONCRETE-01: CO1 PRECAST WALL PANEL	 METAL-01: MT1 EXTERIOR PIGMENT STEEL EXPOSITION SIMILAR TO WEATHERED STEEL	ELEVATION KEY NOTES	
 EIFS-01: EFS1 LIGHT PEBBLE SMOOTH FINISH	 METAL-02: MT2 METAL PANEL SYSTEM & ACCESSORIES	1. METAL WORK FINISH TO USE ONE CORRUSSION TEST	
 EIFS-02: EFS2 HEAVY GRAIN FINISH	 METAL-03: MT3 METAL PANEL & TRIM IN WOODGRAIN FINISH	2. SURFACE FINISH TO USE ONE CORRUSSION TEST	
 GLAZING-01: GL1 GLASS EXTERIOR & STOREFRONT SYSTEM WITH ANODIZED BLACK & WOODGRAIN FINISH		3. METAL COLOR	
		4. METAL COLOR AND FINISH	
		5. FINISH QUALITY	
		6. REQUIRED MATERIAL, READY TO FINISH	
		7. MAKE SURE TO CHECK	

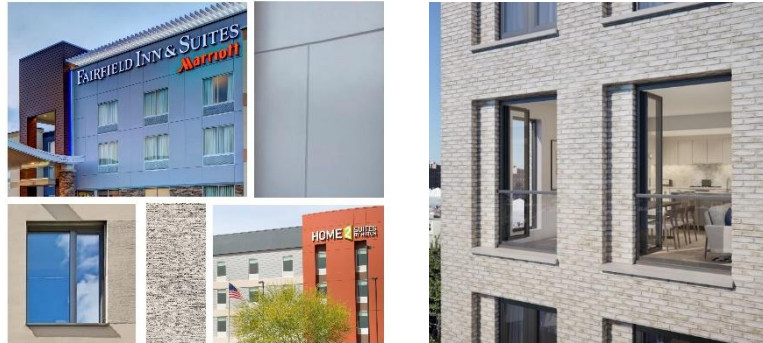


MATERIAL DESCRIPTION		ELEVATION SYMBOLS	
 BRICK-01: B1 BRICK OR BRICK VENEER		 GLAZING-02: GL2 GLASS RAILING SYSTEM	 SIGNAGE TAG  MATERIAL TAG  KEY NOTE
 BRICK-02: B2 BRICK OR BRICK VENEER		 GLAZING-03: GL3 ALUMINUM FINED WINDOW WITH ANODIZED BLACK FINISH	ELEVATION KEY NOTES 1. FFL: FINISHED FLOOR, SEE ACD CONNECTION DET. 2. LVL: LEVEL FINISH AND FINISH 3. FFL: FINISH 4. FFL: FINISH AND FINISH 5. FINISH: FINISH 6. FINISH: FINISH AND FINISH 7. FINISH: FINISH AND FINISH 8. FINISH: FINISH AND FINISH
 BRICK-03: B3 BRICK OR BRICK VENEER		 GLAZING-04: GL4 STRUCTURAL SILLCOLE CURTAIN WALL	
 CONCRETE-01: CO1 PRECAST WALL PANEL		 METAL-01: MT1 SITE-SPEC FACADE STEEL EXPRESSION SIMILAR TO VBA-PORTLAND STEEL	
 EIFS-01: EFS1 LIGHT PEBBLE SMOOTH FINISH		 METAL-02: MT2 METAL PANEL SYSTEM & ACCESSORIES	
 EIFS-02: EFS2 HEAVY TEXTURE FINISH		 METAL-03: MT3 METAL PANEL & TRIM WITH WOODGRAN FINISH	
 GLAZING-01: GL1 GLASS ENTRANCES & STOREFRONT SYSTEM WITH ANODIZED BLACK & WOODGRAN FINISH			



EXAMPLES OF EIFS FINISH-VARIATION

MATERIAL DESCRIPTION		ELEVATION SYMBOLS	
	BRICK-01_B1 BRICK OR BRICK VENEER		GLAZING-02_GL2 GLASS RAILING SYSTEM
	BRICK-02_B2 BRICK OR BRICK VENEER		GLAZING-03_GL3 ALUMINUM WINDOW WITH ANODIZED BLACK FINISH
	BRICK-03_B3 BRICK OR BRICK VENEER		GLAZING-04_GL4 STRUCTURAL SILICONE CURTAIN WALL
	CONCRETE-01_CO1 PRECAST WALL PANEL		ELEVATION KEY NOTES
	EIFS-01_EFS1 LIGHT PEBBLE SMOOTH FINISH		METAL-01_MT1 EXTENSION FACADE STEEL EXPRESSION SIMILAR TO WEATHERED STEEL
	EIFS-02_EFS2 HEAVY TEXTURE FINISH		METAL-02_MT2 METAL PANEL SYSTEM & ACCESSORIES
	GLAZING-01_GL1 GLASS ENTRANCES & STOREFRONT SYSTEM WITH ANODIZED BLACK & WOODGRAN FINISH		METAL-03_MT3 METAL PANEL & TRIM WITH WOODGRAN FINISH

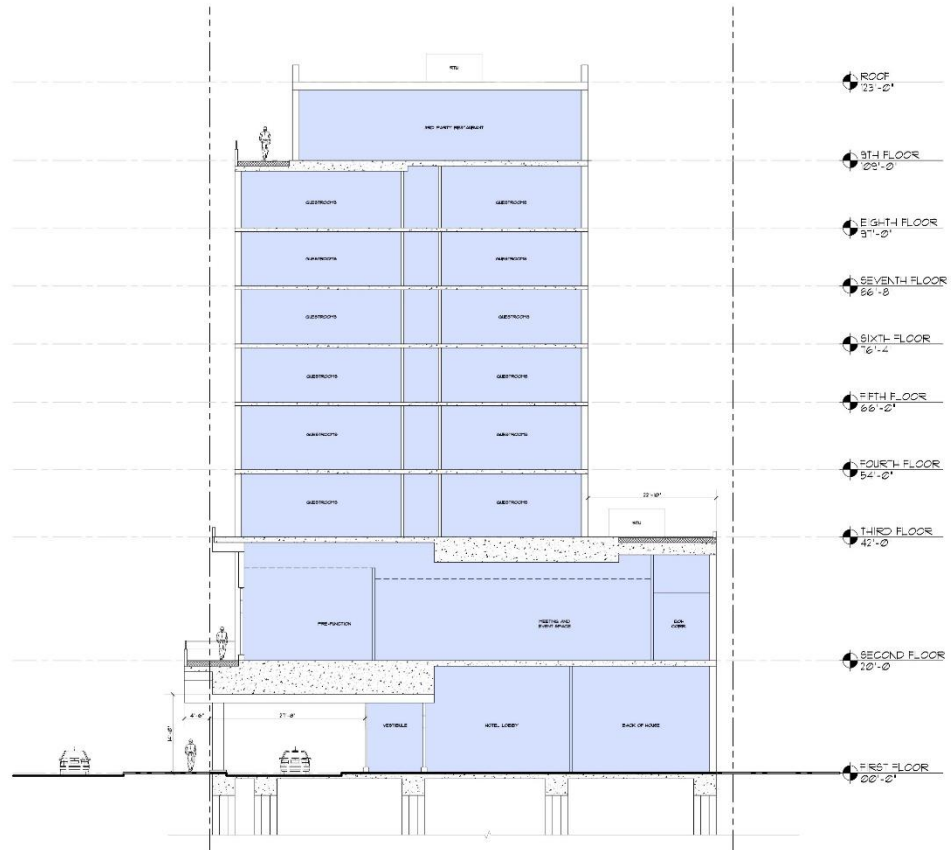
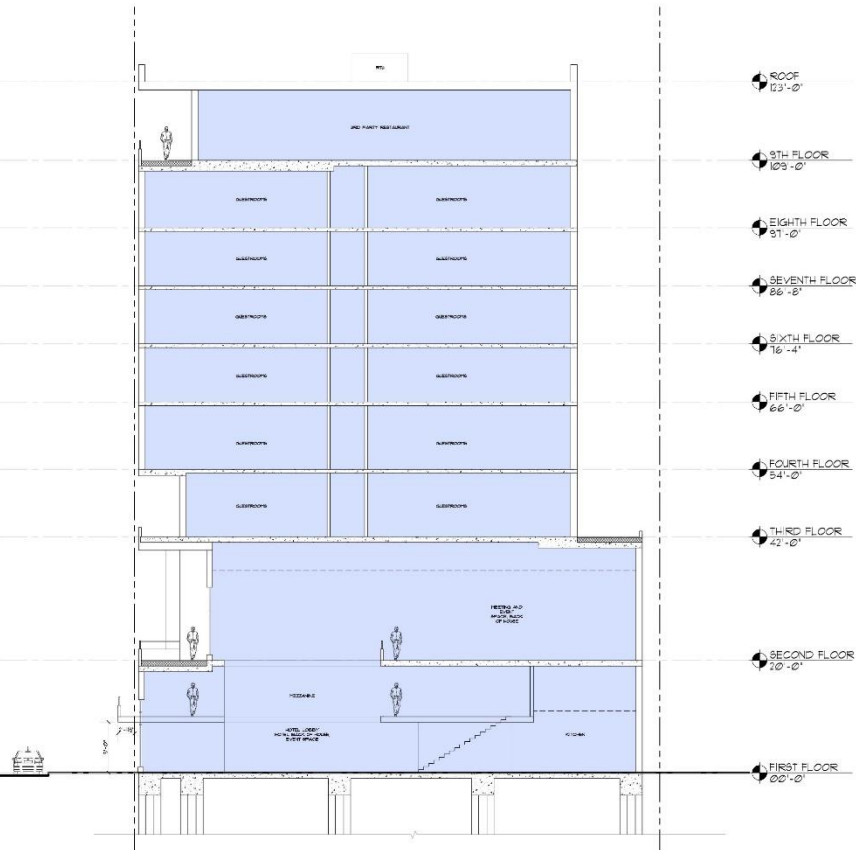


NORTH ELEVATION



Building Elevations

AUTOGRAPH
COLLECTION®
HOTELS



① BUILDING SECTION

② BUILDING SECTION



Building Cross Sections

AUTOGRAPH
COLLECTION®
HOTELS