



MILWAUKEE
HISTORIC
PRESERVATION
COMMISSION

LIVING WITH HISTORY

Certificate of Appropriateness

Milwaukee Historic Preservation Commission/200 E. Wells Street/Milwaukee, WI 53202/phone 414-286-5712/fax 414-286-3004

Property 2580 N. DOWNER AV. North Downer Avenue Historic District
Description of work Install window signage and above entry doors a projecting, type A sign with individual, pin-set letters which will be non-illuminated.
Date issued 6/13/2014 PTS ID 94800 COA, signage

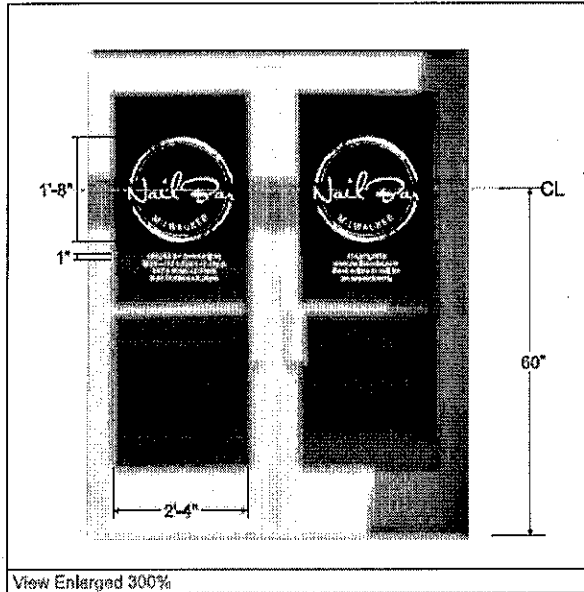
In accordance with the provisions of Section 320-21 (11) and (12) of the Milwaukee Code of Ordinances, the Milwaukee Historic Preservation Commission has issued a certificate of appropriateness for the work listed above. The work was found to be consistent with preservation guidelines. The following conditions apply to this certificate of appropriateness:

All work will be done according to the attached drawings and photos. Projecting sign will be "Type A." individual, pin-set letters. **PLEASE NOTE THAT THIS PROJECT REQUIRES AN AMENDMENT TO THE DETAIL PLANNED DEVELOPMENT FOR THE AREA AND NO PERMITS CAN BE ISSUED UNTIL THAT AMENDMENT IS MADE AND THE PLANS HAVE BEEN REVIEWED BY THE CITY'S PERMIT CENTER.**

All work must be done in a craftsman-like manner, and must be completed within one year of the date this certificate was issued. Staff must approve any changes or additions to this certificate before work begins. Work that is not completed in accordance with this certificate may be subject to correction orders or citations. If you require technical assistance, please contact Paul Jakubovich of the Historic Preservation staff as follows: Phone: (414) 286-5712 Fax: (414) 286-3004 E-mail: pjakub@milwaukee.gov. If permits are required, AND FOR SIGNAGE THEY ARE, you are responsible for obtaining them from the Milwaukee Development Center. If you have questions about permit requirements, please consult the Development Center's web site, www.milwaukee.gov/build, or call (414) 286-8210.

City of Milwaukee Historic Preservation

Copies to: Development Center, Ald. Nik Kovac, Rinka/Chung, Inspector Bill Richter (286-2518), Inspector Heidi Weed, Katie Stawarz



Vinyl Graphics:

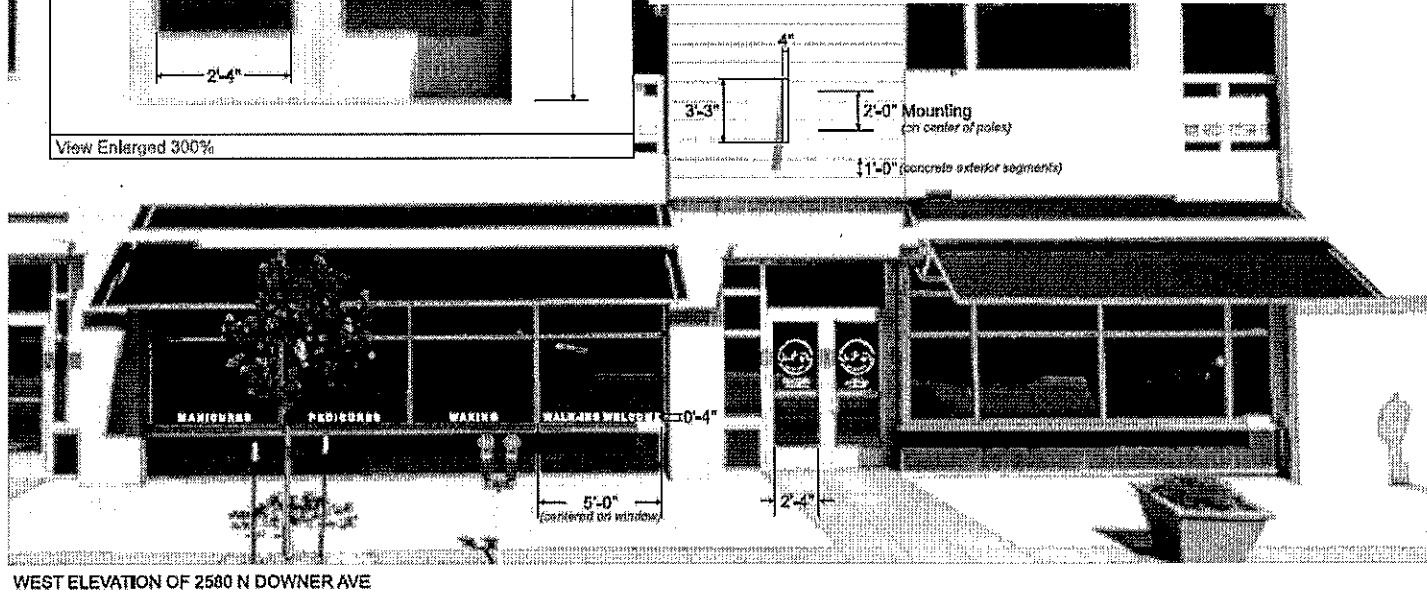
Logos Applied to both doors on West Elevation at 60" (h) on center,
Copy to be centered between Logo and door handles.

Left Door: Logo w/ Hours of Operation beneath

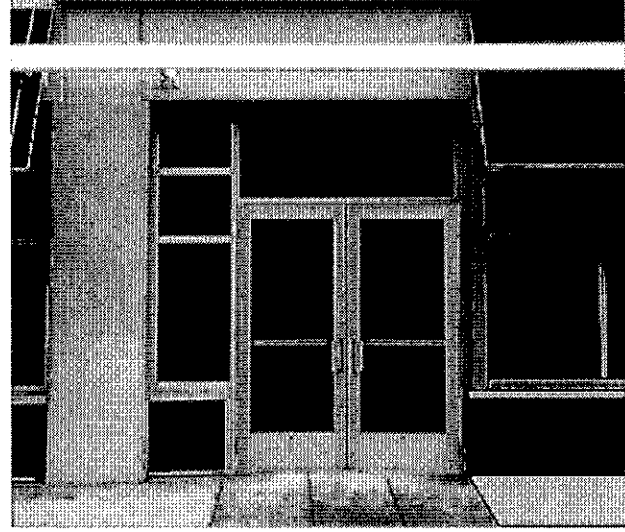
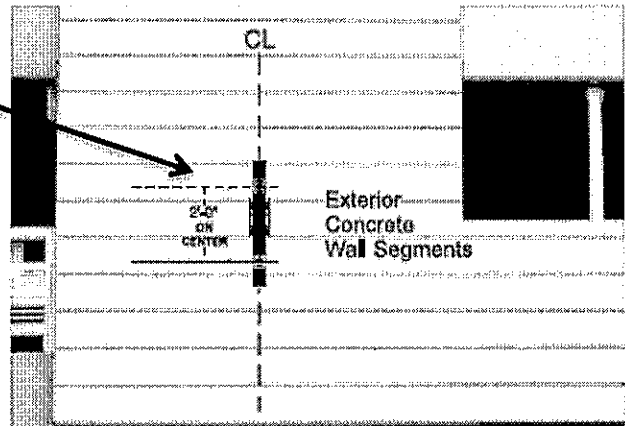
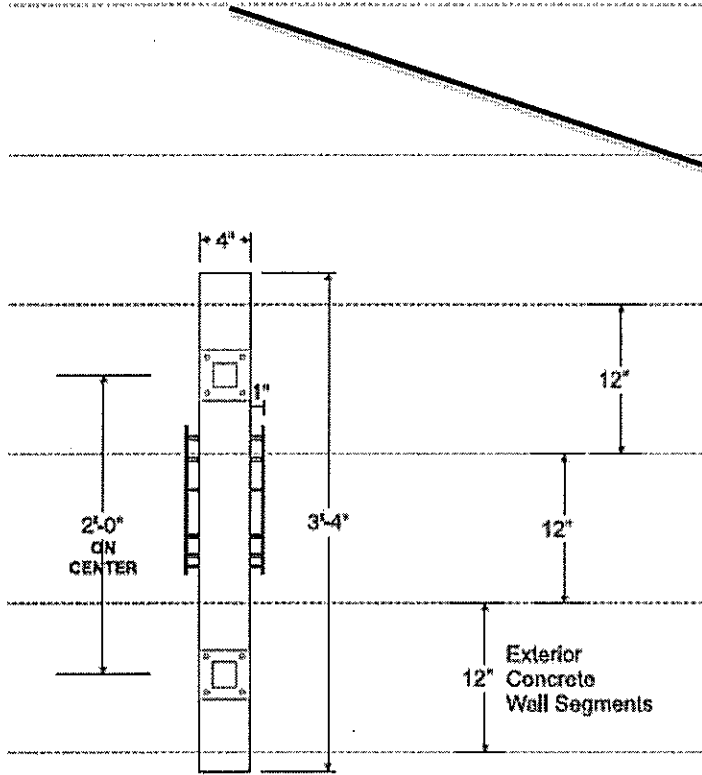
Right Door: Logo w/ Phone Number, Web Address and Appointment info.

Set of (4) Windows to the left of entrance are marked at the bottom of each window at 4" tall copy. (Reading Left to Right):
"MANICURES", "PEDICURES", "WAXING", and
"WALK-INS WELCOME"

Graphics are die-cut from 3M 7725-20 Matte White Vinyl Film and applied to 1st Surfaces of Windows



Locations of vinyl, individual letters that will be applied directly to the glass



West Elevation

Installation Location

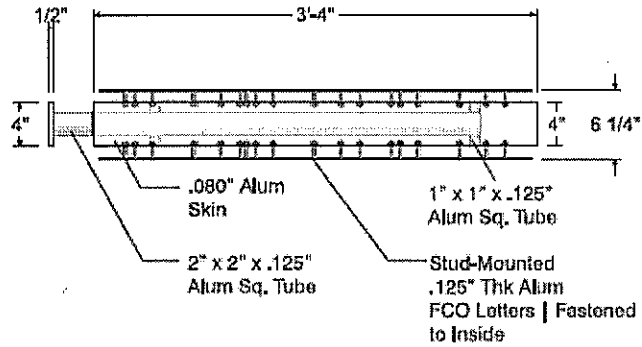
On NW Corner of Parking Structure Facing West just above 1st Floor.

Anchor Sign into Concrete Wall Segment Center to Wall. Bottom Arm is on Vertical Center of 5th Segment up. Top Arm is mounted to Vertical Center of 7th Segment up

Location of projecting, non-illuminated sign.

THIS SIGN IS INTENDED TO BE INSTALLED IN ACCORDANCE WITH THE REQUIREMENTS OF ARTICLE 680 OF THE NEC AND/OR OTHER APPLICABLE LOCAL CODES. THIS INCLUDES PROPER GROUNDING AND BONDING OF THE SIGN.

Top View



D/F BLADE SIGN W/ FCO LETTERS

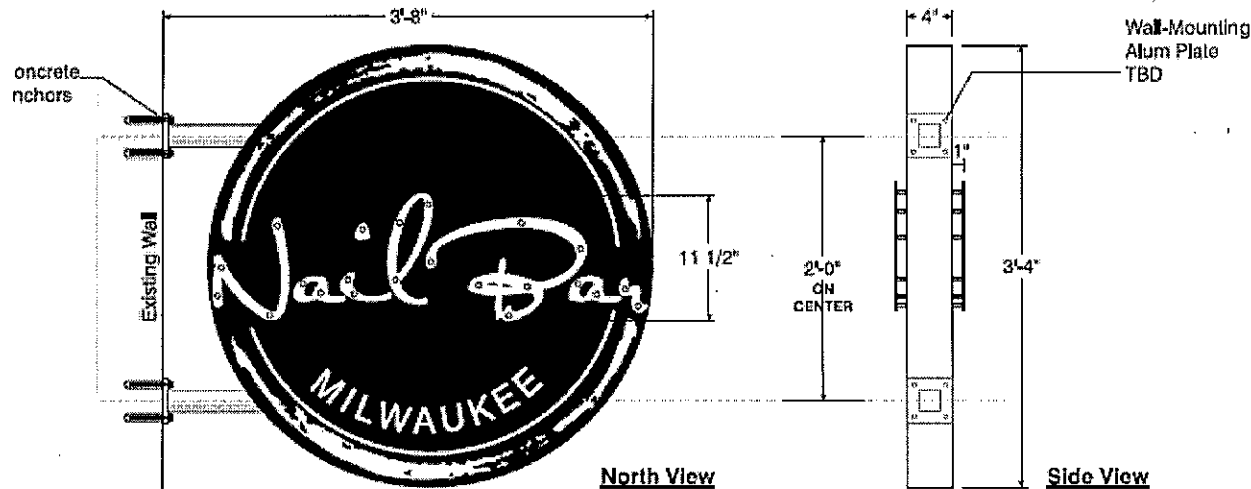
Non-Illuminated Signage Constructed of:

Sign Body Constructed of 2" x 2" Alum Sq. Tube, 1" x 1" Alum Sq. Tube and Skinned with (.080-.125") Thk Alum TBD Painted Satin White TBD

Ring Graphic is Die-Cut from 3M 3630-22 Matte Black Vinyl. Applied to Both Sides on 1st Surface.

.125" Thk Routed Alum FCO Letters Stud-Mounted on Back and Mechanically Fastened to Sign from Inside. Spaced 1" Off Sign Face. Painted Satin Black.

Sign Fastened to Wall w/ Concrete Anchors. Final Location TBD.



Dimensions and construction details of projecting, non-illuminated sign over entry doors.