

ASSESSOR'S PLAT OF MILLER PARK

ALL OF HF STORY'S SUBDIVISION AND STORY'S SUBDIVISION No.2 LOCATED IN AND INCLUDING PART OF THE NE 1/4 OF THE SE 1/4, SE 1/4 OF THE SE 1/4 AND ALSO PART OF THE SW 1/4 OF THE SE 1/4, NW 1/4 OF THE SE 1/4, AND THE SE 1/4 OF THE SW 1/4 ALL IN SECTION 26, AND PART OF SW 1/4 OF THE NE 1/4, NW 1/4 OF THE NE 1/4, NE 1/4 OF THE NE 1/4 AND THE SE 1/4 OF THE NE 1/4, AND THE NE 1/4 OF THE NW 1/4 ALL IN SECTION 35, AND PART OF THE SW 1/4 OF THE NW 1/4, AND NW 1/4 OF THE NW 1/4, AND THE NE 1/4 OF THE NW 1/4, AND THE SE 1/4 OF THE NW 1/4 ALL IN SECTION 36, ALL IN TOWNSHIP 7 NORTH, RANGE 21 EAST, CITY OF MILWAUKEE, MILWAUKEE COUNTY, STATE OF WISCONSIN.

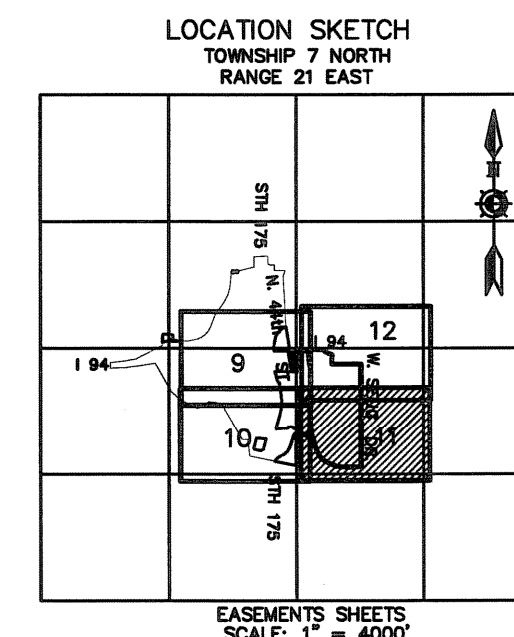
There are no objections to this assessor's plat with respect to applicable provisions of s. 236.15 and 236.20 Wis. Stats.

Certified June 15th, 2016
Rene M. Poway
 Department of Administration

Y 382,552.11
 X 2,511,838.32
 R.A. N 382,587.71
 R.A. E 512,072.07
 SEWRPC CONC. MON
 W/BRASS CAP FOUND

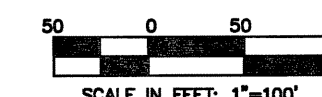
LOT 8
 1,237,195 S.F.
 28.402 Ac.

HANK AARON STATE TRAIL
 ADOPTED BY MILWAUKEE COUNTY BOARD RESOLUTION #96-655, QUIT CLAIM DEED MILWAUKEE COUNTY TO THE STATE OF WISCONSIN FOUND ON REEL 3958, IMAGE 1318, DOC. #7308803



NORTH REFERENCED TO THE WISCONSIN STATE PLANE COORDINATE SYSTEM, (WSPCS) SOUTH ZONE NAD 1983 (1991) AND TO THE EAST LINE OF THE SE 1/4 OF SECTION 26-7-21, BEARING N01°37'31"W.
 THE WSPCS SOUTH ZONE '83 ('91) COORDINATES DIVIDED BY A SCALE FACTOR OF 0.99990695, AND SUBTRACTED 2,000,000 FROM THE "X" VALUE EQUALS THE RECORDED AS (R.A.) COORDINATES. THE RECORDED AS COORDINATES ARE TAKEN FROM WISDOT PROJECT I.D.1350-07-21
 ELEVATIONS REFERENCED TO U.S.G.S. 1929.

ALL DIMENSIONS MEASURED AND SHOWN TO THE NEAREST HUNDREDTH OF A FOOT.
 ALL ANGLES MEASURED TO THE NEAREST FIVE SECONDS AND COMPUTED TO THE NEAREST SECOND.



C/L GEOMETRY OF HANK AARON STATE TRAIL
 WIDTH VARIES

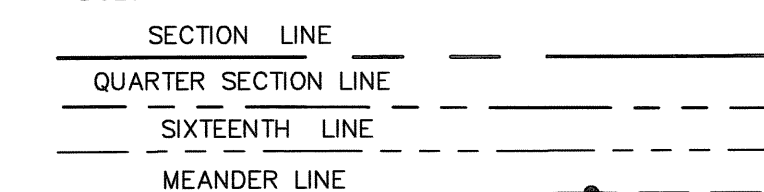
Line #	Length	Direction
L2	86.06	N87°56'55"E
L3	126.02	N84°30'11"W
L4	66.75	N86°09'53"W
L5	151.69	N87°25'57"W
L6	95.40	N73°34'09"W
L7	76.53	N67°18'56"W
L8	36.48	N60°34'29"W
L9	34.15	N56°01'56"W
L10	256.01	N52°18'21"W
L11	19.70	N46°19'36"W
L12	18.55	N37°29'20"W
L13	18.34	N29°42'14"W
L14	52.61	N17°46'07"W

Line #	Length	Direction
L15	39.28	N26°48'54"W
L16	60.99	N32°08'07"W
L17	50.81	N24°07'28"W
L18	148.35	N7°10'09"W
L19	26.47	N0°59'56"W
L20	121.94	N6°59'16"E
L21	25.01	N2°10'41"E
L22	40.30	N8°20'54"W
L23	240.26	N16°32'40"W
L24	195.02	N12°00'20"W
L25	52.89	S0°19'41"E
L26	282.92	N4°19'13"E
L27	94.40	N0°01'38"E

Line #	Length	Direction
L28	197.81	N4°36'44"W
L29	251.75	N9°20'26"E
L30	152.80	N4°57'09"W
L31	16.85	N10°16'29"W
L32	18.79	N12°17'59"W
L33	19.05	N20°07'22"W
L34	76.94	N26°54'27"W
L35	89.82	N11°21'12"W
L36	139.22	N4°40'58"W
L37	40.97	N1°05'03"E
L38	105.53	N4°15'12"E

LEGEND

- DENOTES 1-1/4" O.D. X 24" LONG IRON PIPE SET, WEIGHING 1.68 LBS./LINEAL FT.
- DENOTES 1-1/4" O.D. IRON PIPE FOUND
- HORIZONTAL PI OR CHANGE OF DIRECTION. DOES NOT INDICATE A MONUMENT



R.A. N 382,461.96= RECORDED AS COORDINATE FROM R/W PROJECT #1350-07-21
 R.A. E 506,771.00= SCALE FACTOR=0.99990695
 TEXT SANITARY SEWER EASEMENT
 TEXT WATERMAIN EASEMENT



05/02/2016
 REVISED 06/06/16

