

Amendment No.2

to

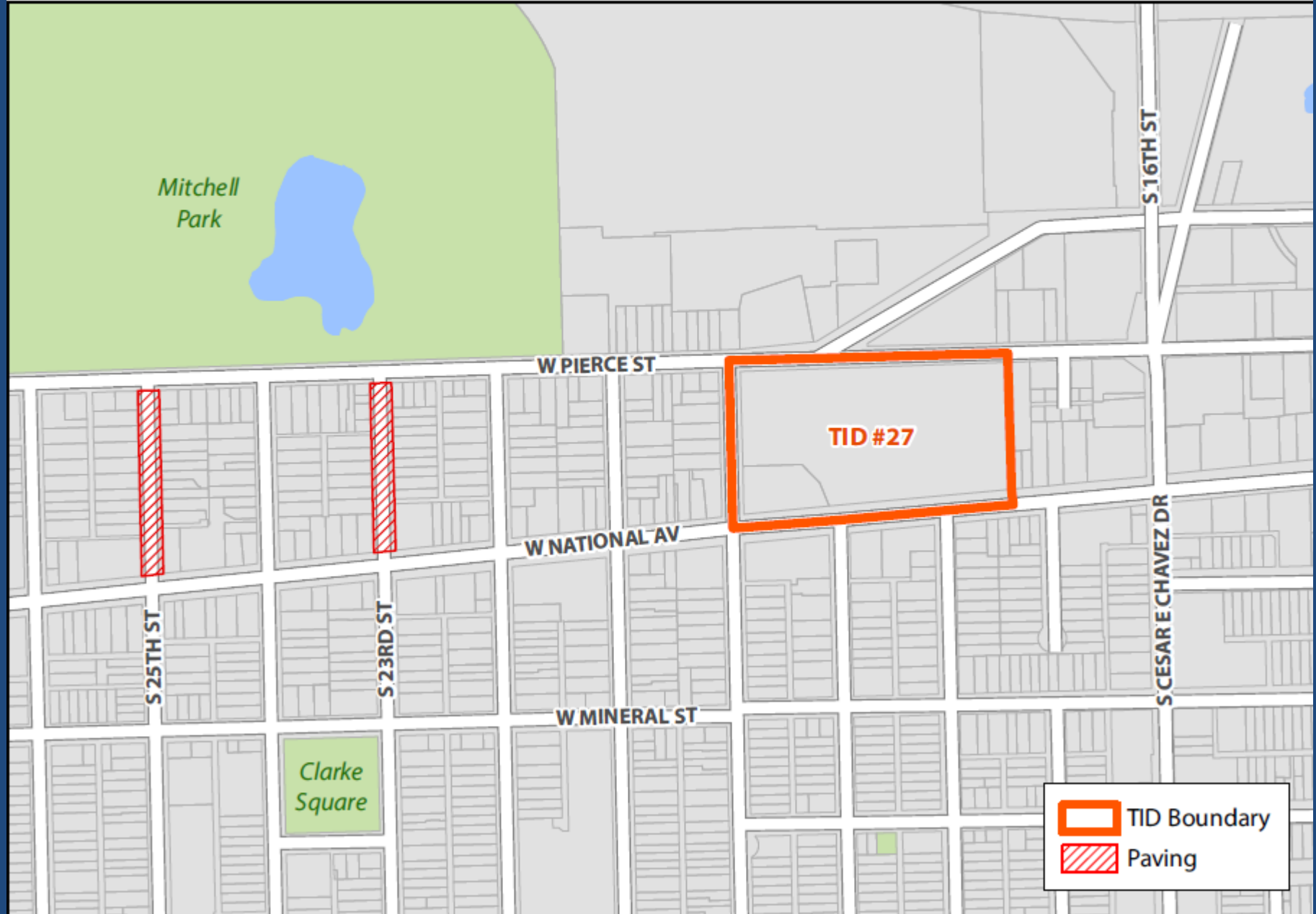
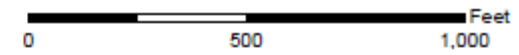
TID No. 27



(Clarke Square)

CLARKE SQUARE MEGA MART, TID NO. 27

MAP 3: PROPOSED USES AND IMPROVEMENTS

Prepared by the Department of City Development Planning Division, 12 May 2015
Source: City of Milwaukee Information & Technology Management Division



	TID Boundary
	Paving

Paving Amendment

- Created in 1995, amended in 2010
- Approximately \$5 million in Project Costs
- \$240,000 available for paving projects
 - South 23rd Street
 - South 25th Street
- 2017 expected close-out