



March 22, 2004.

**Plan of operation**

Dear Board of Zoning  
C/o Common Council:

On behalf of our Board members, staff, families and children, we would like to take this opportunity to inform you of the description of the change within the child care center. Due to our efforts to provide the very best care for our children we have decided not to use the Adult Classroom for adults instead this room will be used for children under 2 years of age for an addition of four children. The only changed that this will concur to our daily operations it's we will be expanding our childcare services to families within the community. Our current families and parents are composed of over 90% of W2 participant and low-income families. Enclosed you will find a floor plan with the diagrams and specifics for this existing classroom.

It is our goal to extend our program based on developmentally appropriate practices by offering the separation of the young infants from the mobile infants. I am highly recommending for your consent in approving this request. Our state licenser (Jane Abshire (262) 521-5092) did a visit and after measuring all classrooms our capacity will be changed **from 45 to 50 children**. It is for this reason, that we are urged your approval for our new occupancy certificate within the county/city and/or state requirements and standards.

Sincerely,

Angelina Zapata DeLaCruz  
Child Care Center Director

For more info.:  
[www.esperanzaunida.org](http://www.esperanzaunida.org)

**EXHIBIT A**  
File No. 031557

CDBG

Ameritech

ACHoice

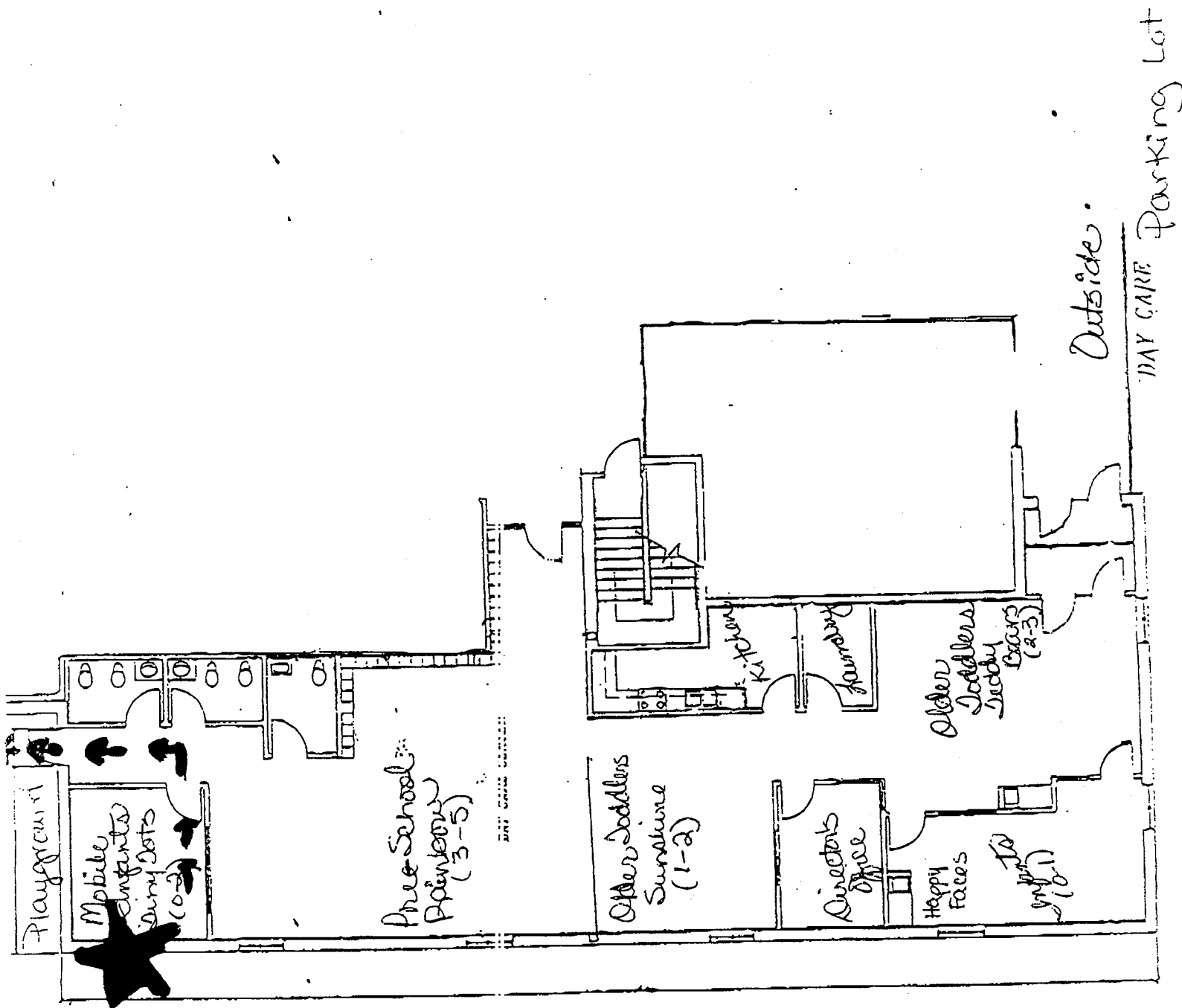
Other ways to help: Donate your car/boat/home, buy a used car, become a customer of our print shop, day care, coffee shop/bookstore, construction company, Call Center, or dumpster sales/repair shop. Hire our graduates. Enroll at Pick N' Save and use our We are Donation #207100.

Although Esperanza Unida isn't funded by United Way, you can designate your gift to us via our donor's choice #22595.

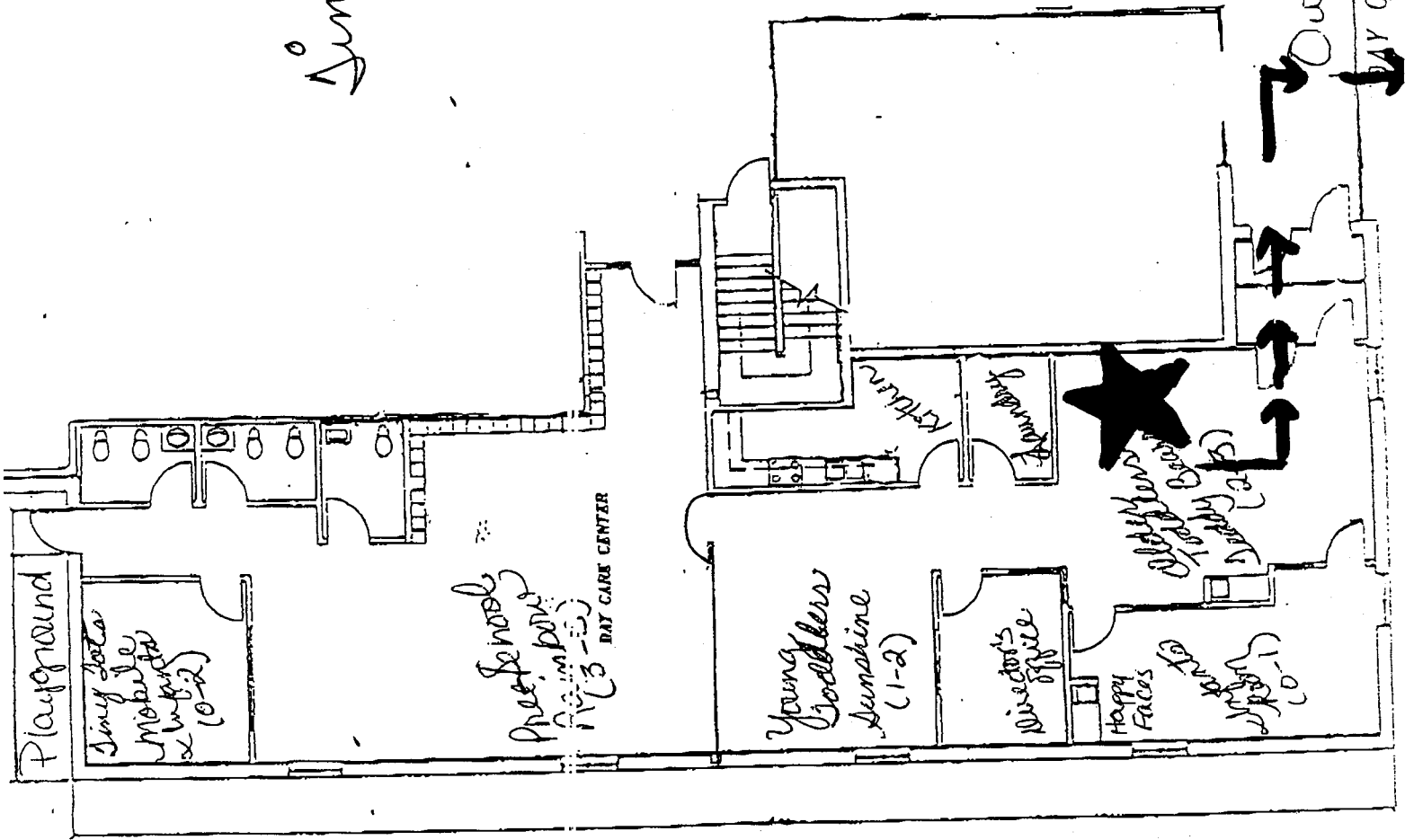
Mar. 31 2003 04:23PM P2

FAX NO. :

FROM :



*Limy Sotz / New Classroom*



*Parking Lot*

*Outside*

*DAY CARE*

