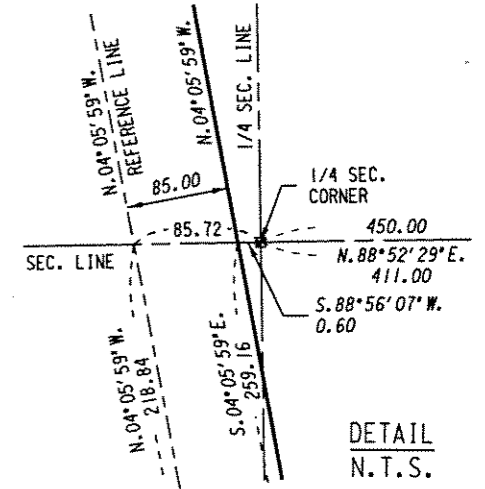
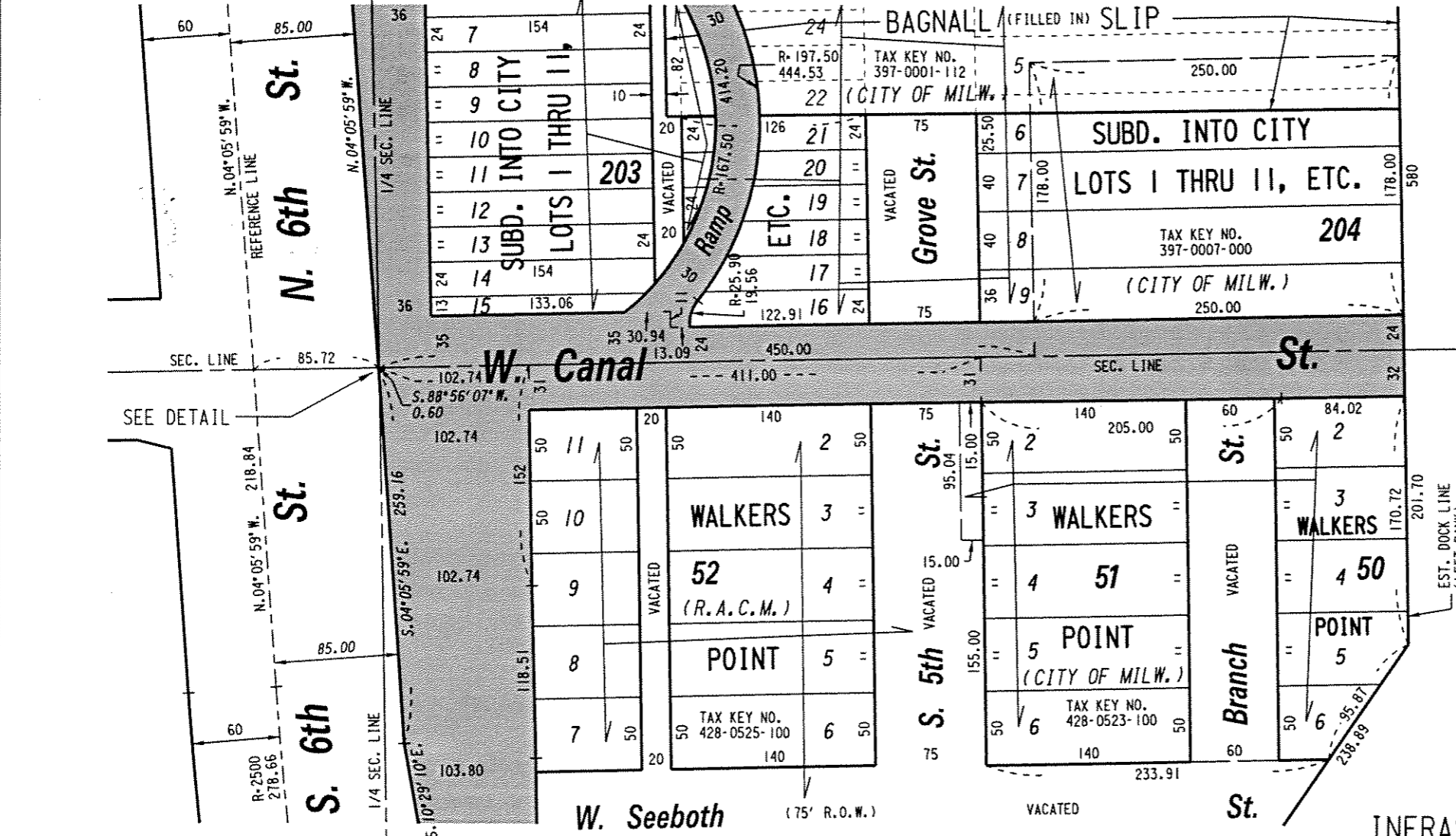


S.W. 1/4 SEC. 29, T.7N., R.22E.

398

397

S.E. 1/4 SEC. 29, T.7N., R.22E.



SOUTH MENOMONEE CANAL



EXHIBIT "A"  
FILE NO. 040218

INFRASTRUCTURE SERVICES DIVISION  
MILWAUKEE, WISCONSIN

ASSIGNED TO: W.E. FUCHS  
DRAWN BY: W.E.F.  
PROJECT/GRANT NO.: WK52337193  
APPROVED BY:

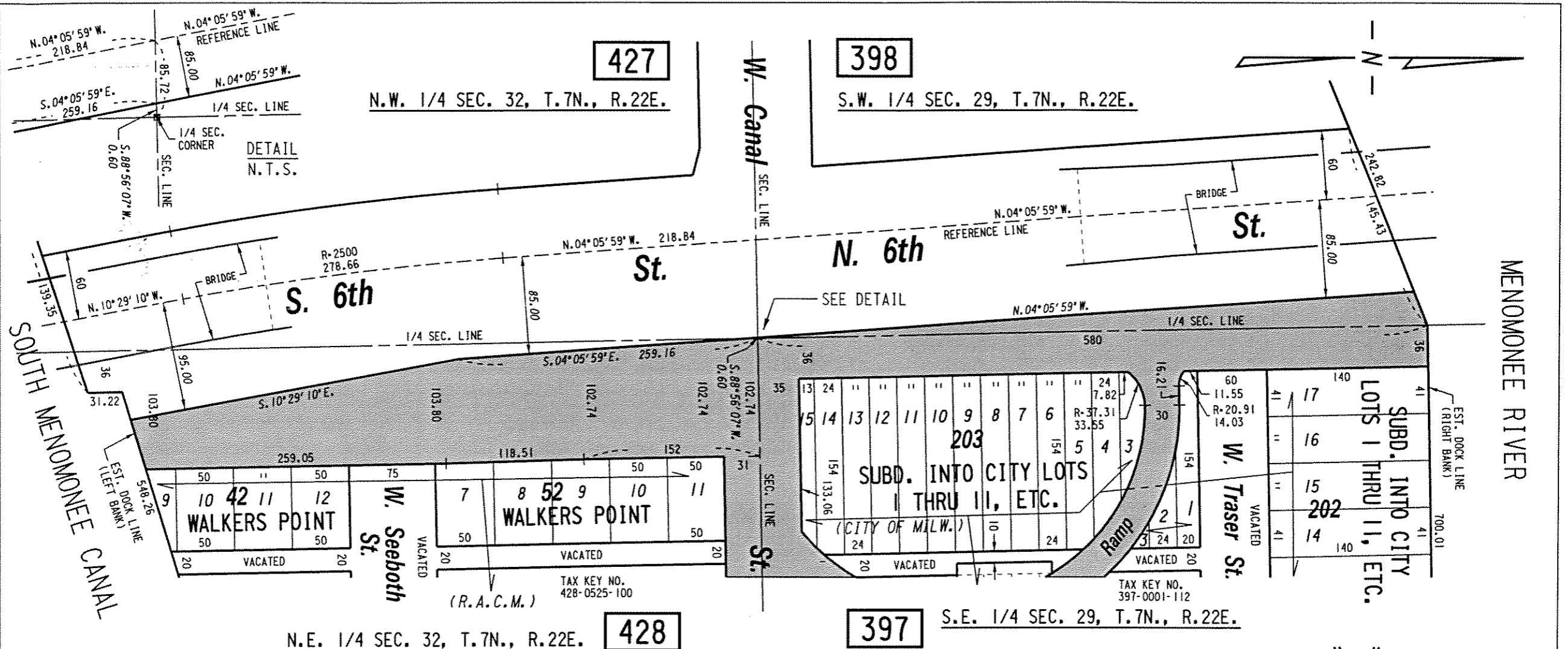
CH'K'D. BY: W.E. FUCHS  
DATE: JULY 15, 2004  
SCALE: 1" = 100'

( MAP 1 OF 4 )

*Marcia Lindholm*  
CENTRAL DRAFTING & RECORDS MANAGER

*[Signature]*  
CIVIL ENGINEER

PORTIONS OF PUBLIC STREETS PROPOSED TO BE VACATED



PORTIONS OF PUBLIC STREETS PROPOSED TO BE VACATED

**EXHIBIT "A"**  
**FILE NO. 040218**  
**INFRASTRUCTURE SERVICES DIVISION**

MILWAUKEE, WISCONSIN  
ASSIGNED TO: W.E. FUCHS  
DRAWN BY: W.E.F.  
PROJECT/GRANT NO.: WK52337193  
APPROVED BY:

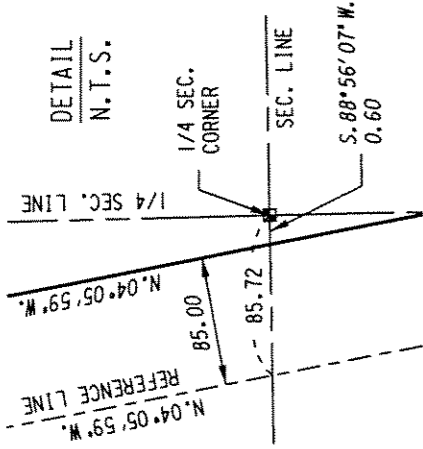
CH'K'D. BY: W.E. FUCHS  
DATE: JULY 15, 2004  
SCALE: 1" = 100'

( MAP 2 OF 4 )

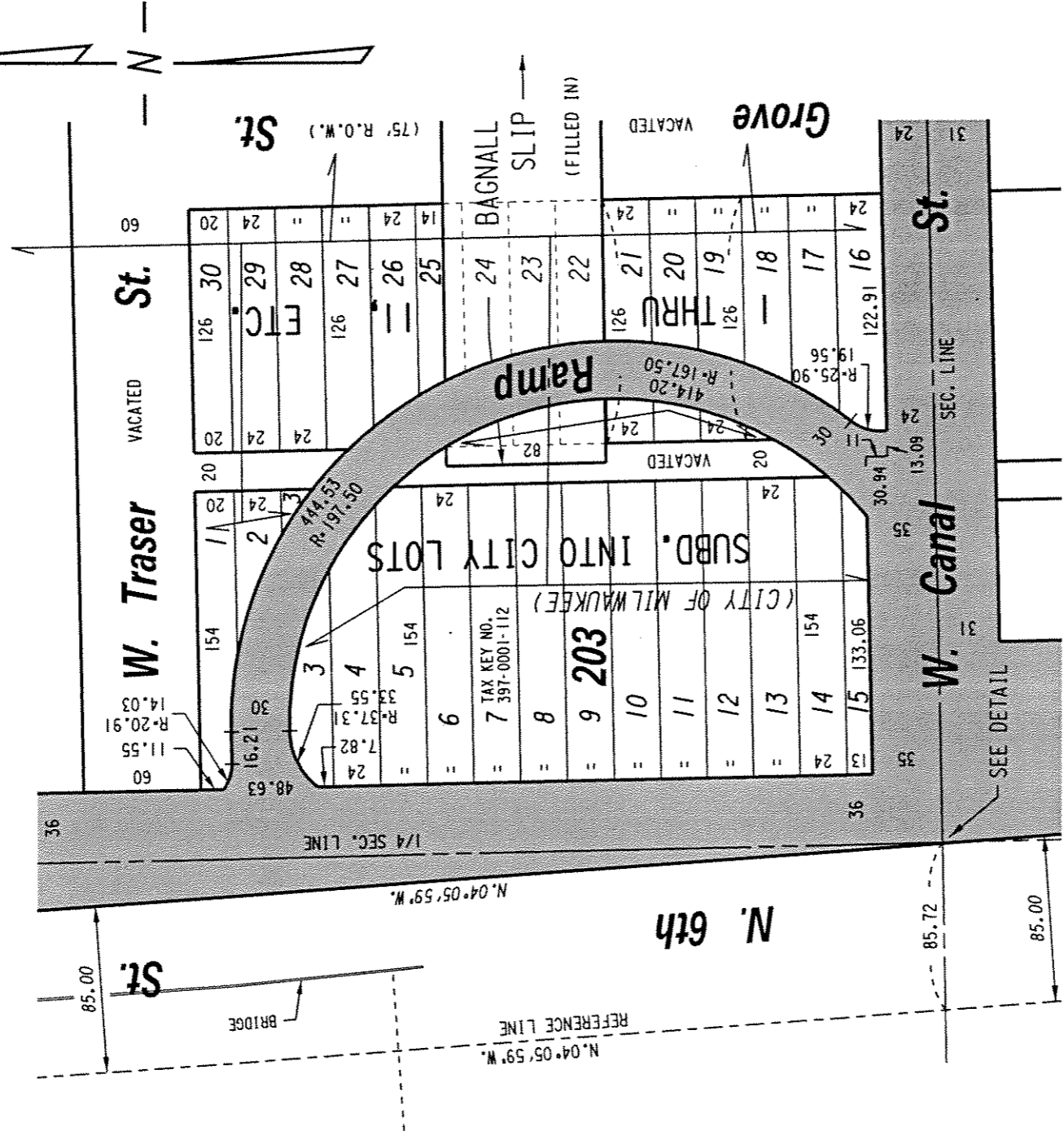
*maria Lindholm*  
CENTRAL DRAFTING & RECORDS MANAGER

*[Signature]*  
ENGINEER

DETAIL  
N.T.S.



S.E. 1/4 SEC. 29, T.7N., R.22E. 397



( MAP 3 OF 4 )

EXHIBIT "A"  
 FILE NO. 040218  
 INFRASTRUCTURE SERVICES DIVISION

PORTIONS OF PUBLIC  
 STREETS PROPOSED  
 TO BE VACATED

MILWAUKEE, WISCONSIN  
 ASSIGNED TO: W.E. FUCHS  
 CH'K'D. BY: W.E. FUCHS  
 DRAWN BY: W.E.F.  
 PROJECT/GRANT NO.: WK52337193  
 APPROVED BY:  
 DATE: JULY 15, 2004  
 SCALE: 1" = 80'

*Marin Rudolph*  
 CENTRAL DRAFTING & RECORDS MANAGER  
*W. E. Fuchs*  
 CIVIL ENGINEER

Menomonee River



( MAP 4 OF 4 )

PORTIONS OF PUBLIC STREETS PROPOSED TO BE VACATED

EXHIBIT "A"  
 FILE NO. 040218  
 INFRASTRUCTURE SERVICES DIVISION

MILWAUKEE, WISCONSIN  
 ASSIGNED TO: W.E. FUCHS  
 CH'K'D. BY: W.E. FUCHS  
 DRAWN BY: W.E.F.  
 DATE: JULY 15, 2004  
 PROJECT/GRANT NO.: WK52337193  
 SCALE: 1" = 150'  
 APPROVED BY:

*Maxie Lundholm*  
 CENTRAL DRAFTING & RECORDS MANAGER  
*Jeff Blumberg*  
 CIVIL ENGINEER