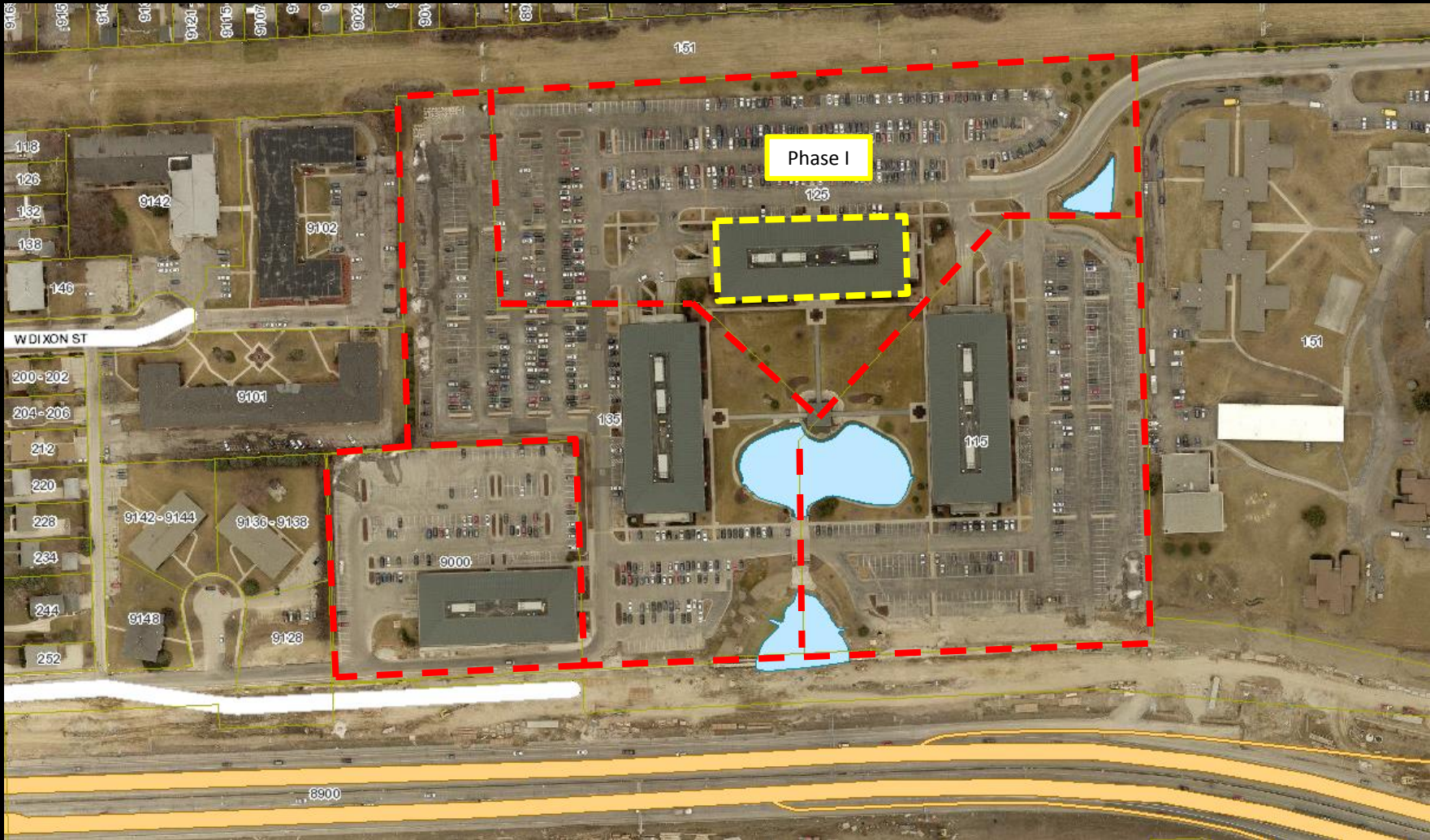


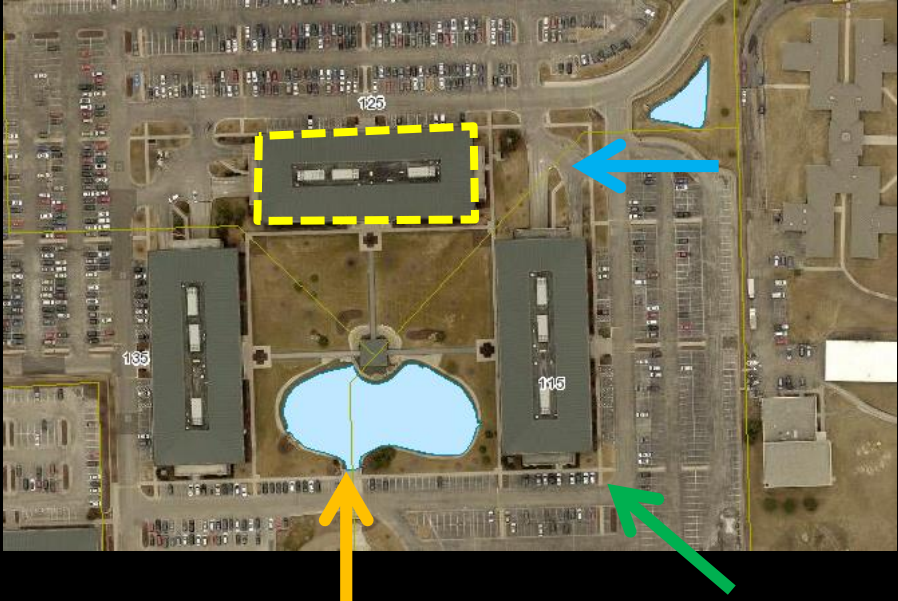
File No. 200133. Substitute resolution relating to a Minor Modification to the Detailed Planned Development known as Honey Creek Corporate Center, Phase I to permit additional building wall signage at 125 South 84th Street, located on the north side of Interstate 94, west of South 84th Street, in the 10th Aldermanic District.



File No. 200133. Site Context Photos.



View from parking lot looking north across pond



Aerial view looking north-west



View from parking lot looking west

File No. 200133. Exhibits.



Vicinity Map



Site Photo



Site Photo

Proposed Changes

Originally Approved Signage	Proposed Signage
<ul style="list-style-type: none">• One sign	<ul style="list-style-type: none">• Three signs allowed on the south side of the building• One sign per story• 30 inches max height• Signs will consist of individual letters• Logo may be taller if it does not go outside the brown precast sign band area• Centered between precast bands• Installed by verified signage company• May be internally illuminated