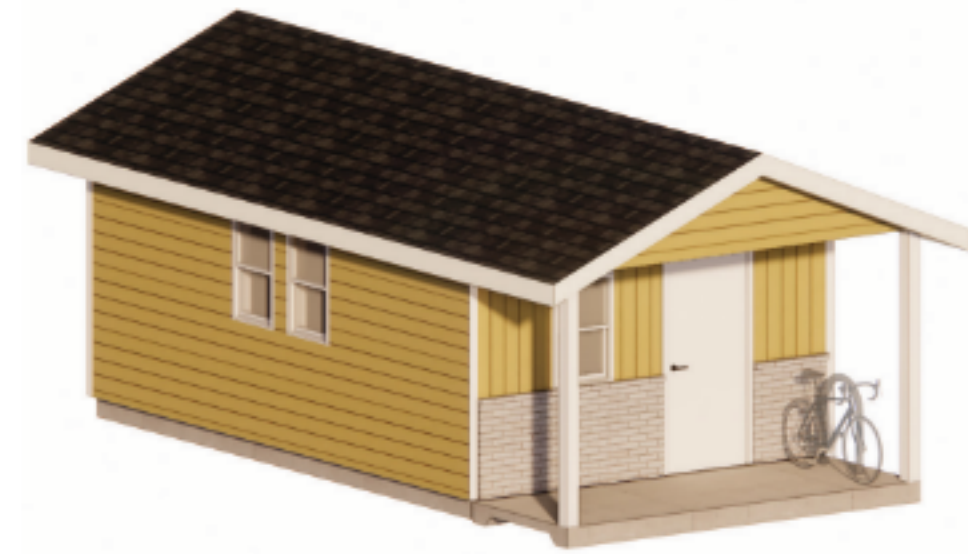




MUNRO
FRONT ELEVATION



PERSPECTIVE



NIMITZ
FRONT ELEVATION



PERSPECTIVE



MURPHY
FRONT ELEVATION



PERSPECTIVE



YEAGER
FRONT ELEVATION



PERSPECTIVE



PULLER
FRONT ELEVATION



PERSPECTIVE



CARTER
FRONT ELEVATION



PERSPECTIVE



PATRIOT
FRONT ELEVATION



PERSPECTIVE



KC HOUSE
FRONT ELEVATION



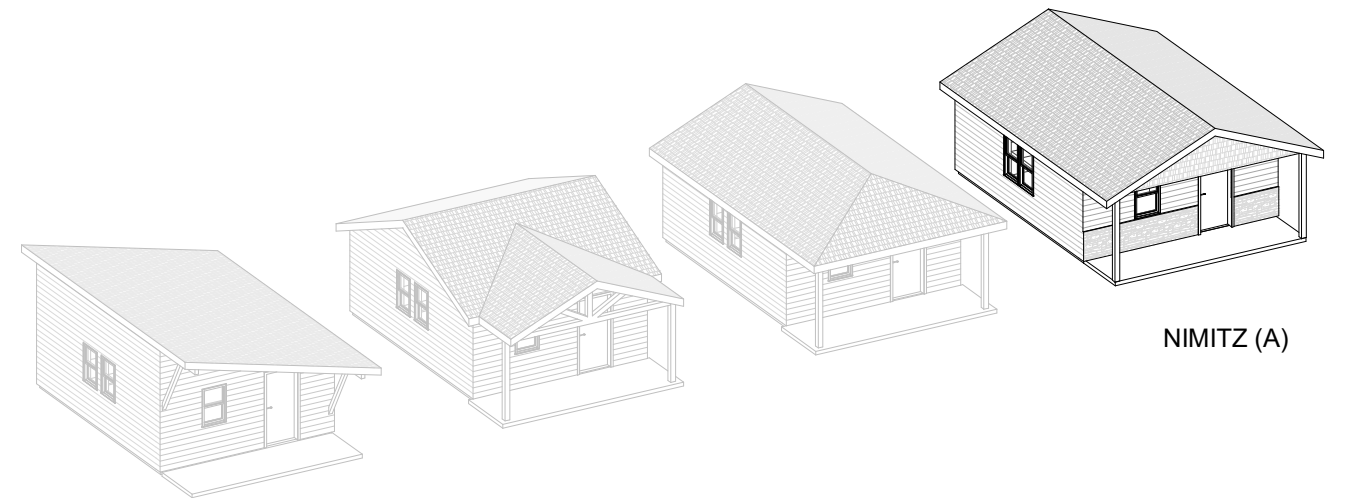
PERSPECTIVE



VETERANS COMMUNITY PROJECT

TINY FAMILY HOMES - NIMITZ (ADA)

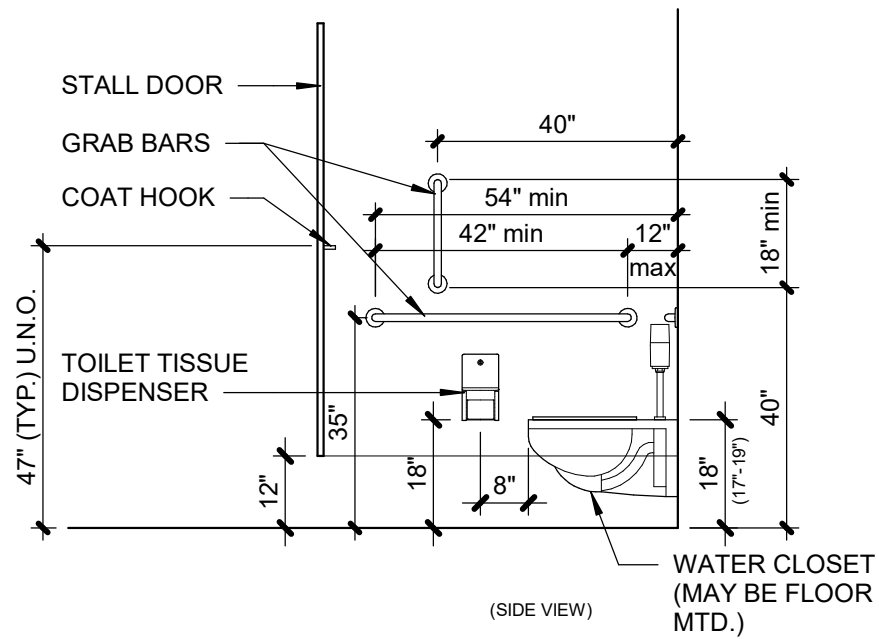
MILWAUKEE, WISCONSIN



SHEET LIST

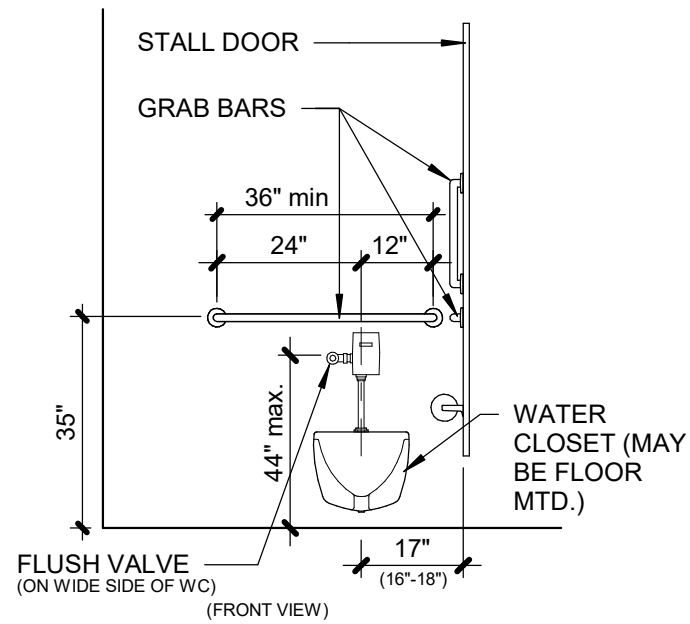
- A0.00A COVER SHEET - NIMITZ (ADA)
- A0.10A ACCESSIBILITY DETAILS
- A1.01A FLOOR PLAN & RCP
- A4.01A EXTERIOR ELEVATIONS
- A4.02A EXTERIOR ELEVATIONS
- A5.00A BUILDING SECTIONS
- S0.0A FROST PROTECTED FOOTING DTL
- S1.01A STRUCTURAL





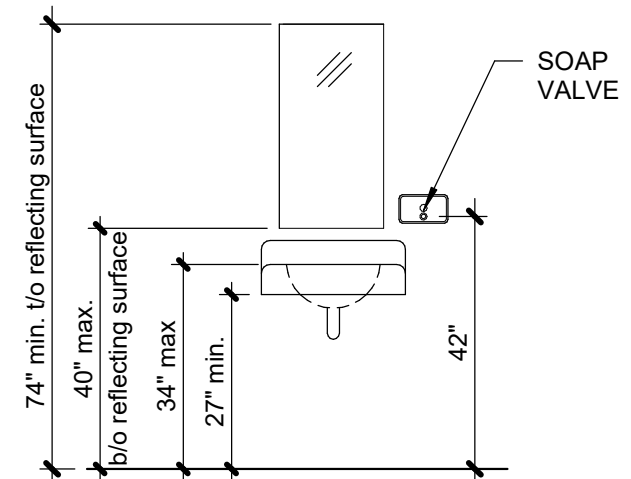
(SIDE VIEW)

WATER CLOSET
(MAY BE FLOOR
MTD.)

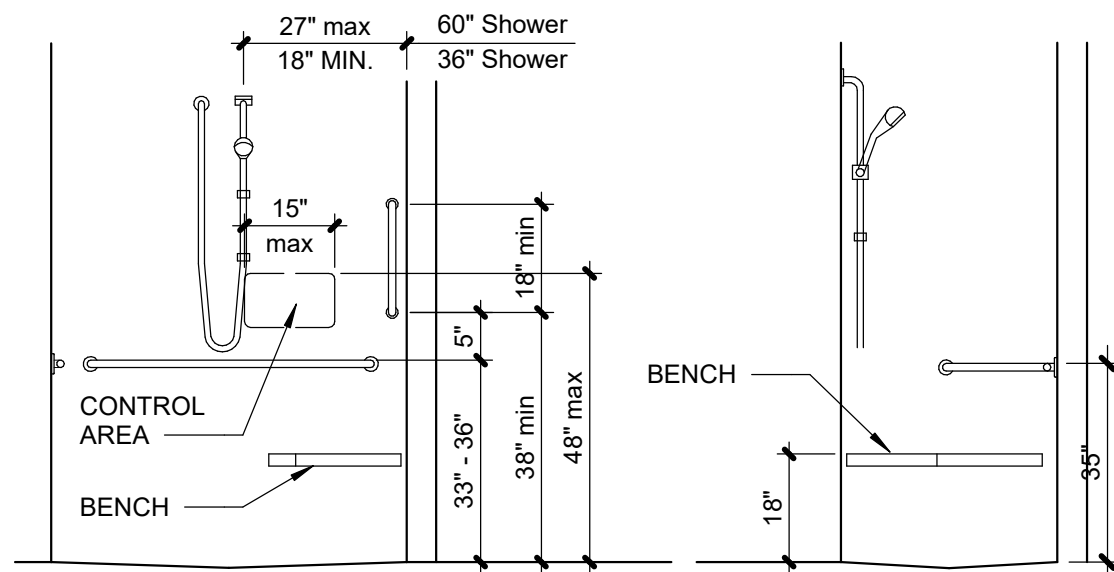


(FRONT VIEW)

WHEELCHAIR ACCESSIBLE TOILET (N.T.S.)

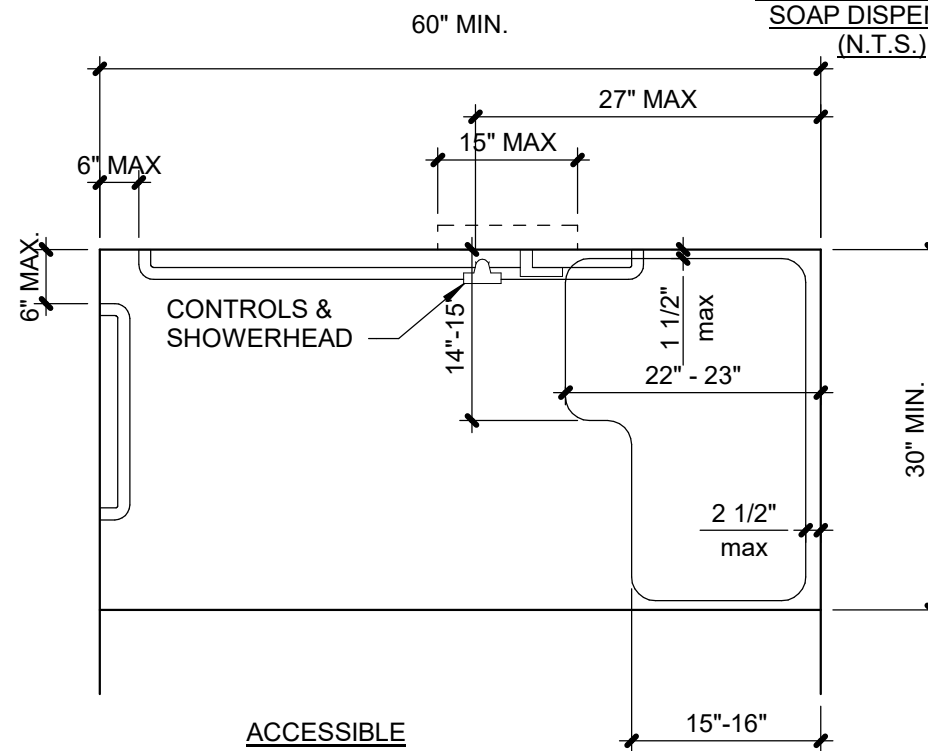


LAVATORY/MIRROR/
SOAP DISPENSER
(N.T.S.)



ACCESSIBLE
SHOWER STALL
(N.T.S.)

ACCESSIBLE
SHOWER SEAT
(N.T.S.)

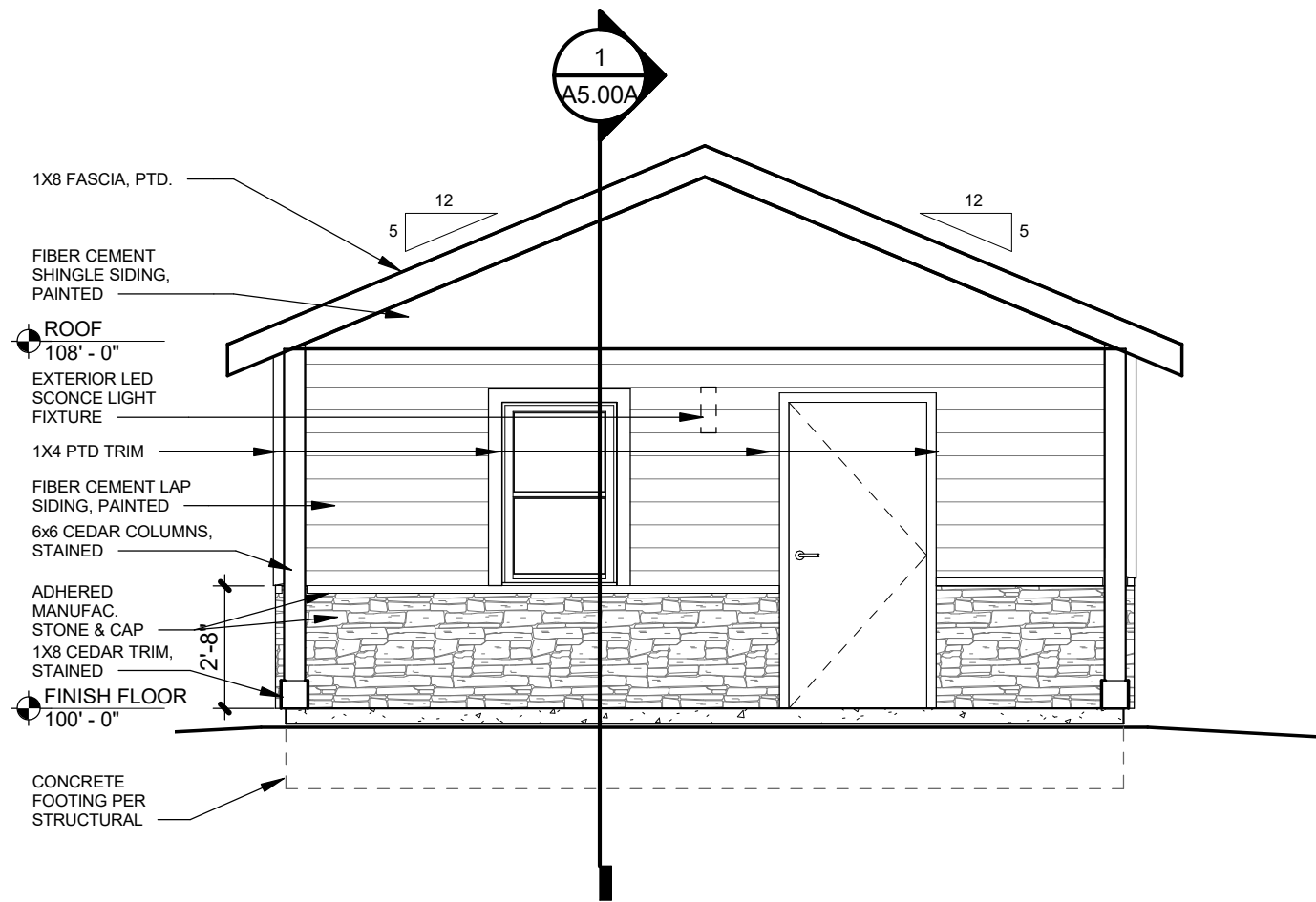


ACCESSIBLE
SHOWER PLAN
(N.T.S.)

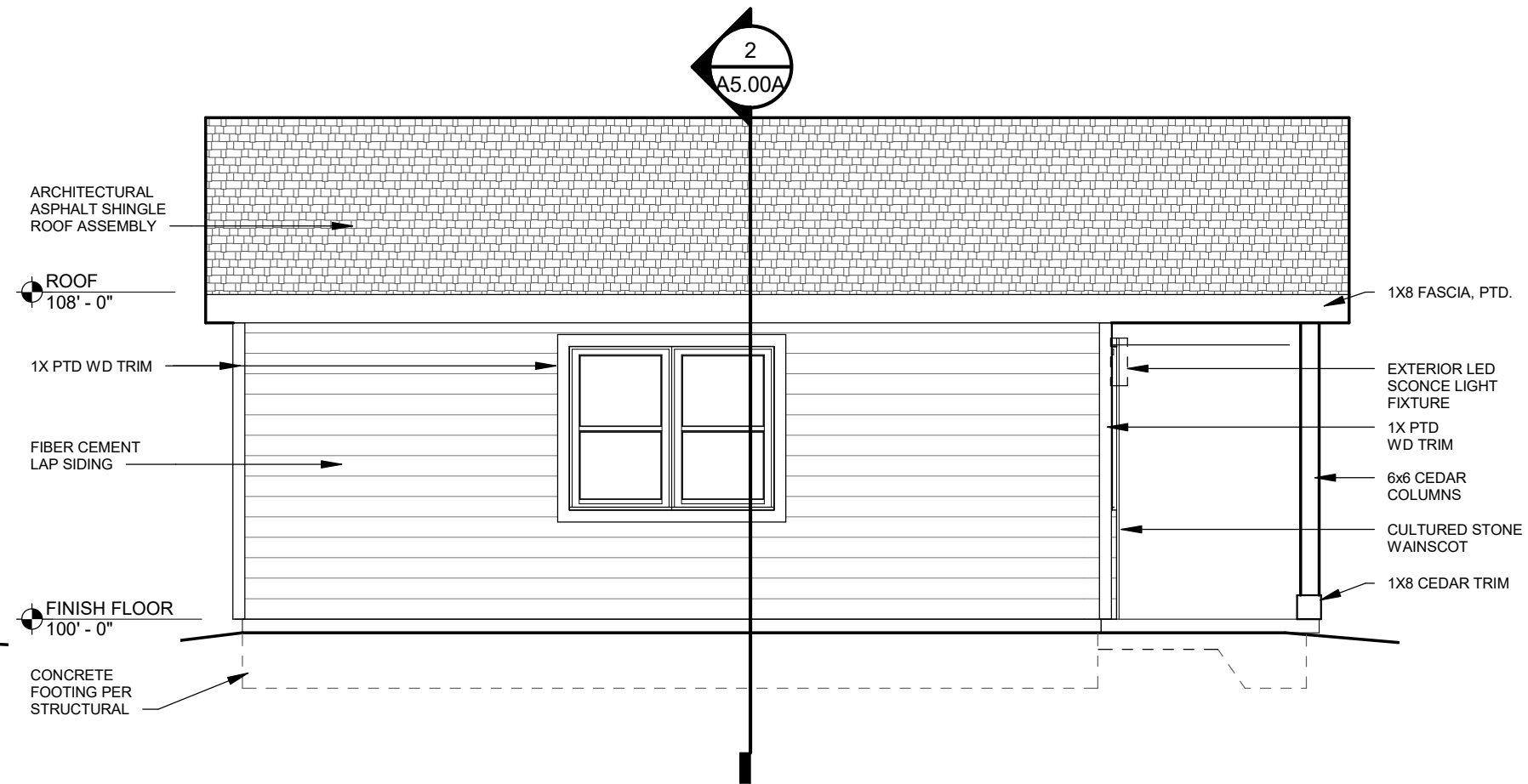
Maximum Reach Depth	.05 inch	2 inches	5 inches	6 inches	9 inches	11 inches
Maximum Reach Height	48 inches	46 inches	42 inches	40 inches	36 inches	34 inches

TABLE 603.6 - ANSI-117.1-2009



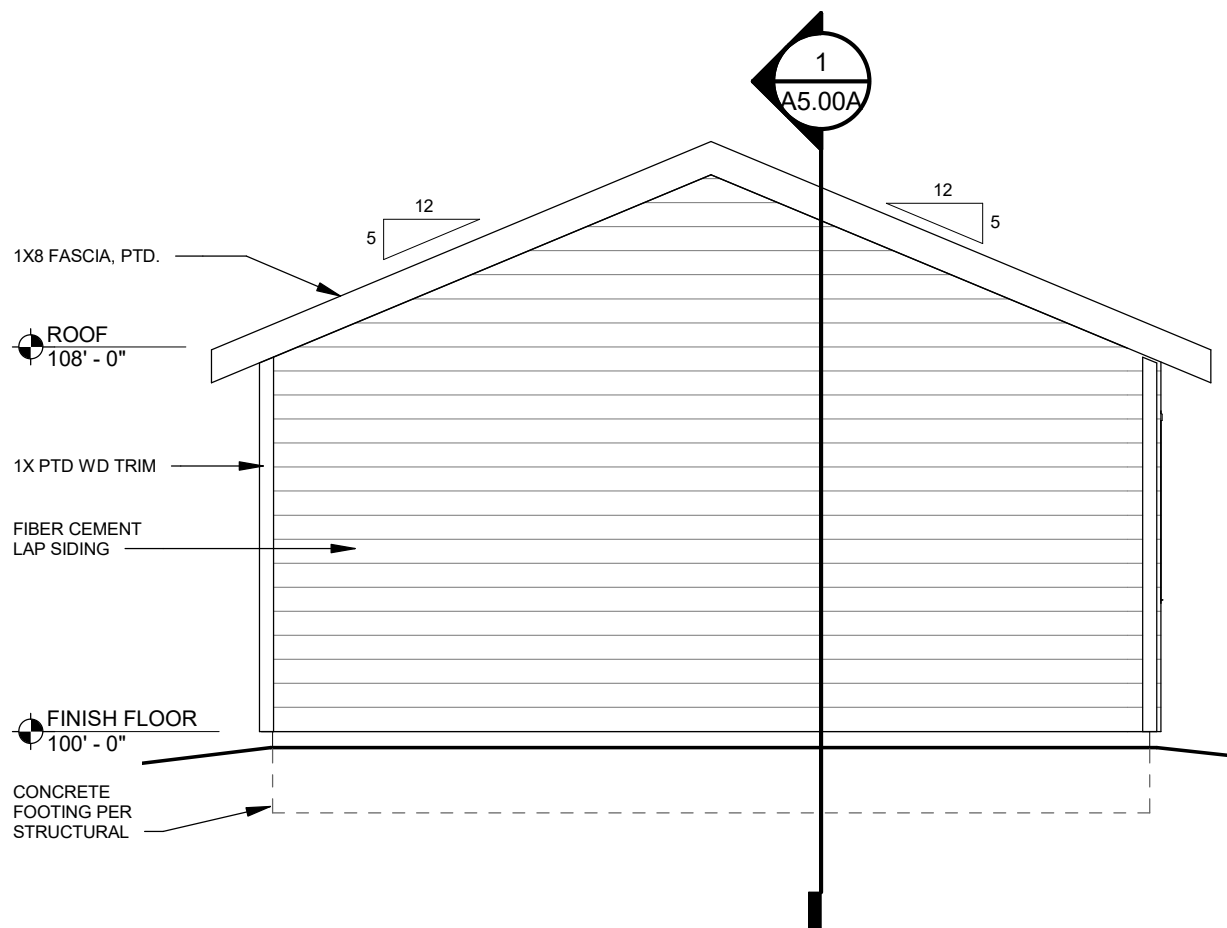


SOUTH ELEVATION - NIMITZ
SCALE : 1/4" = 1'-0"

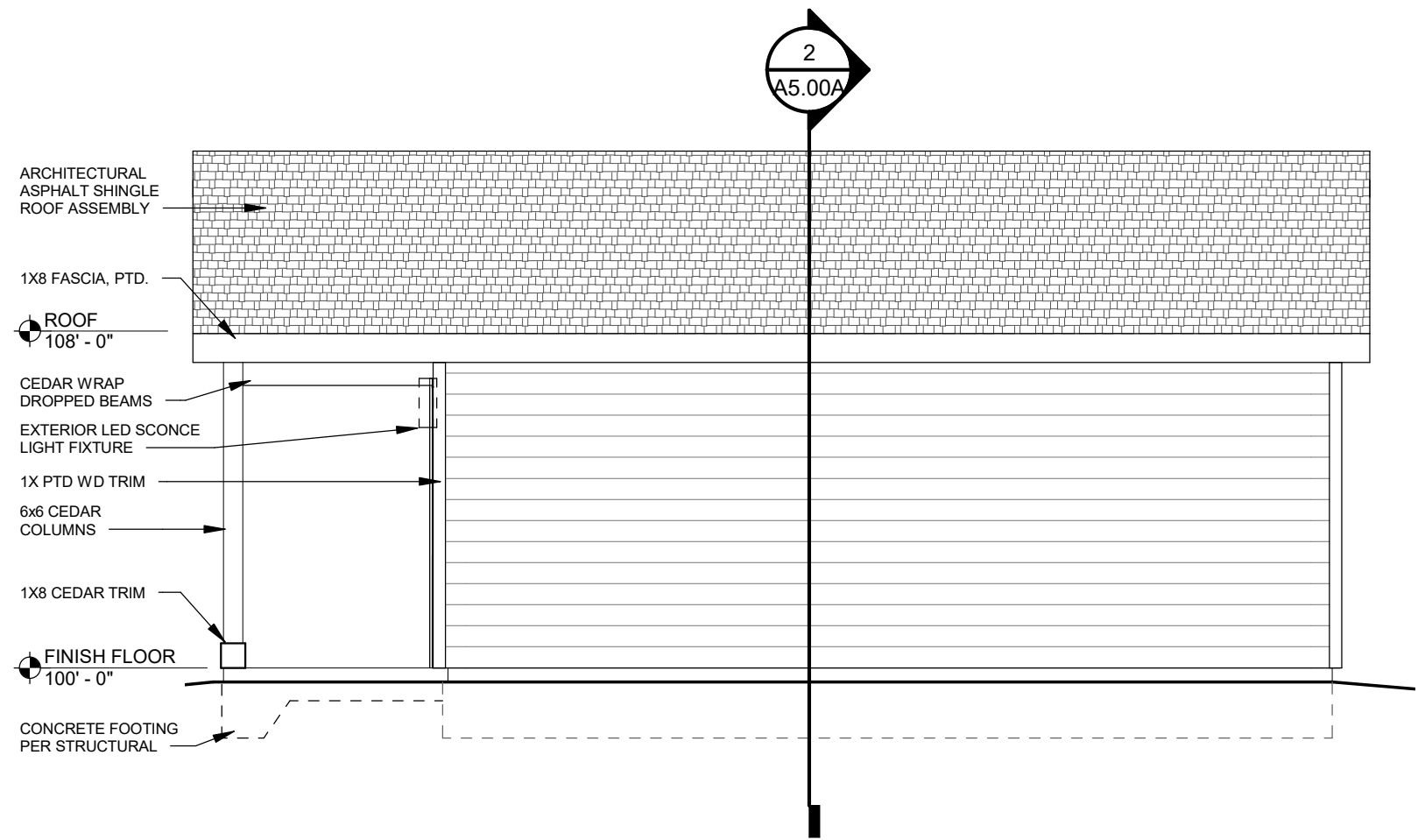


WEST ELEVATION - NIMITZ
SCALE : 1/4" = 1'-0"



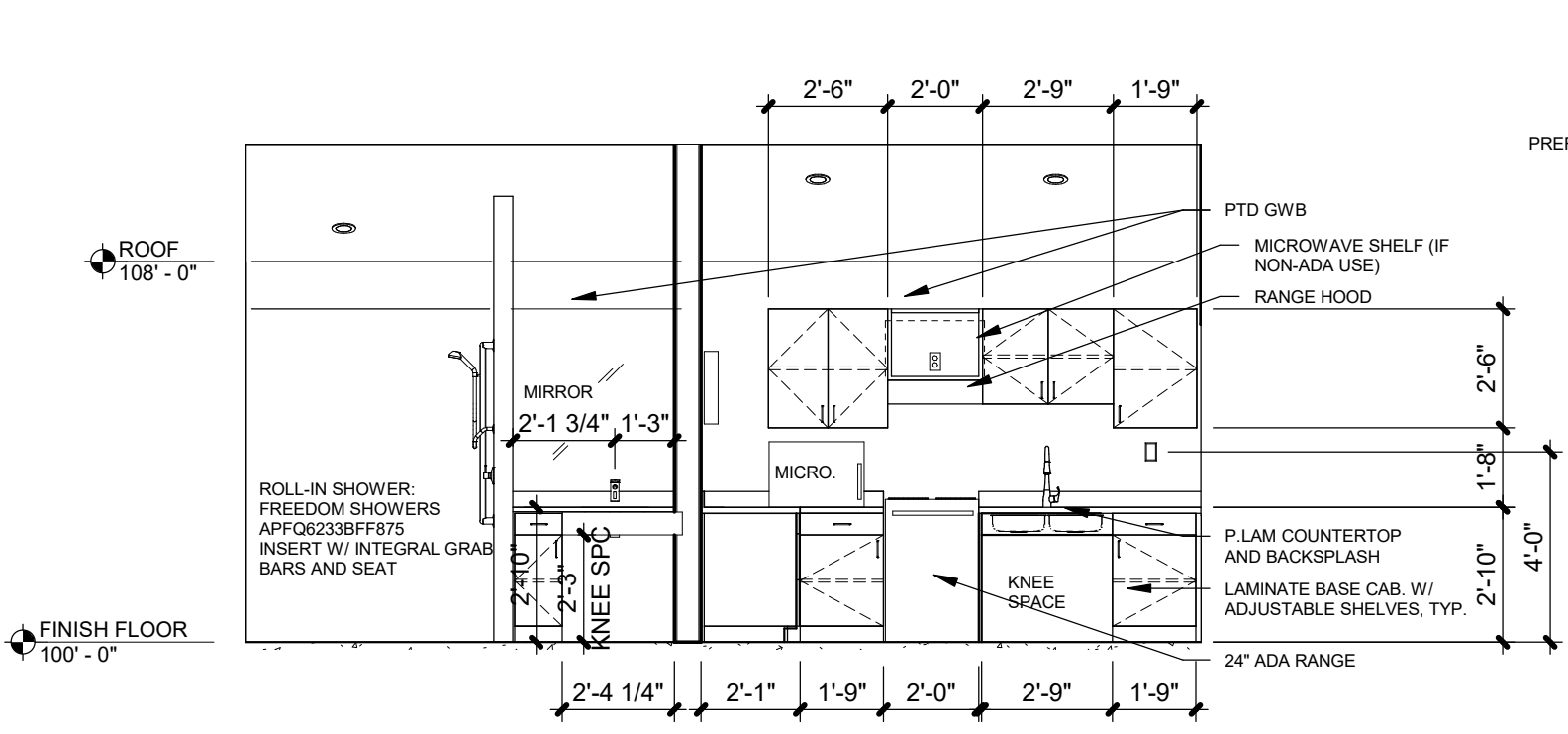


NORTH ELEVATION - NIMITZ
SCALE : 1/4" = 1'-0"

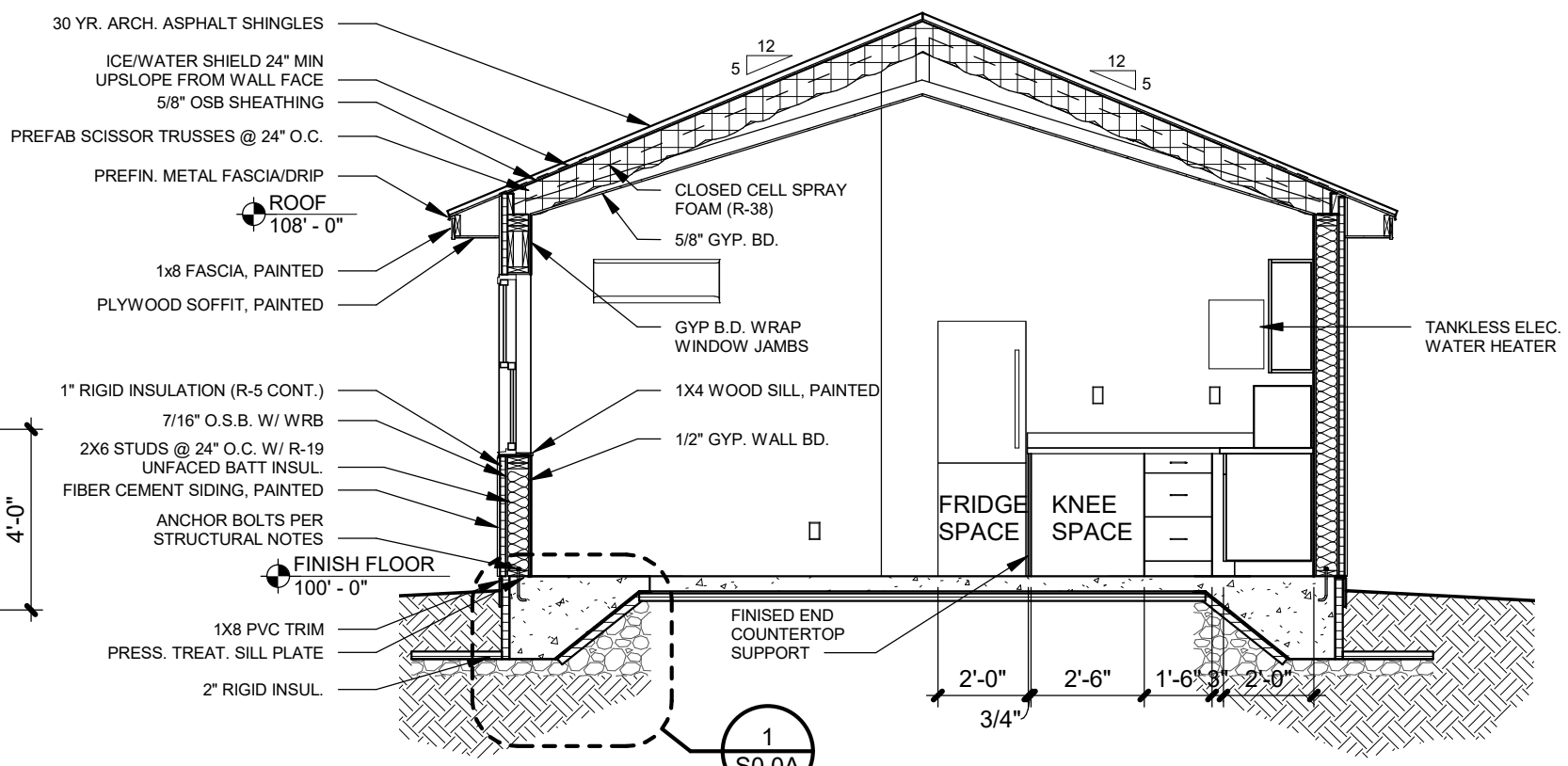


EAST ELEVATION - NIMITZ
SCALE : 1/4" = 1'-0"

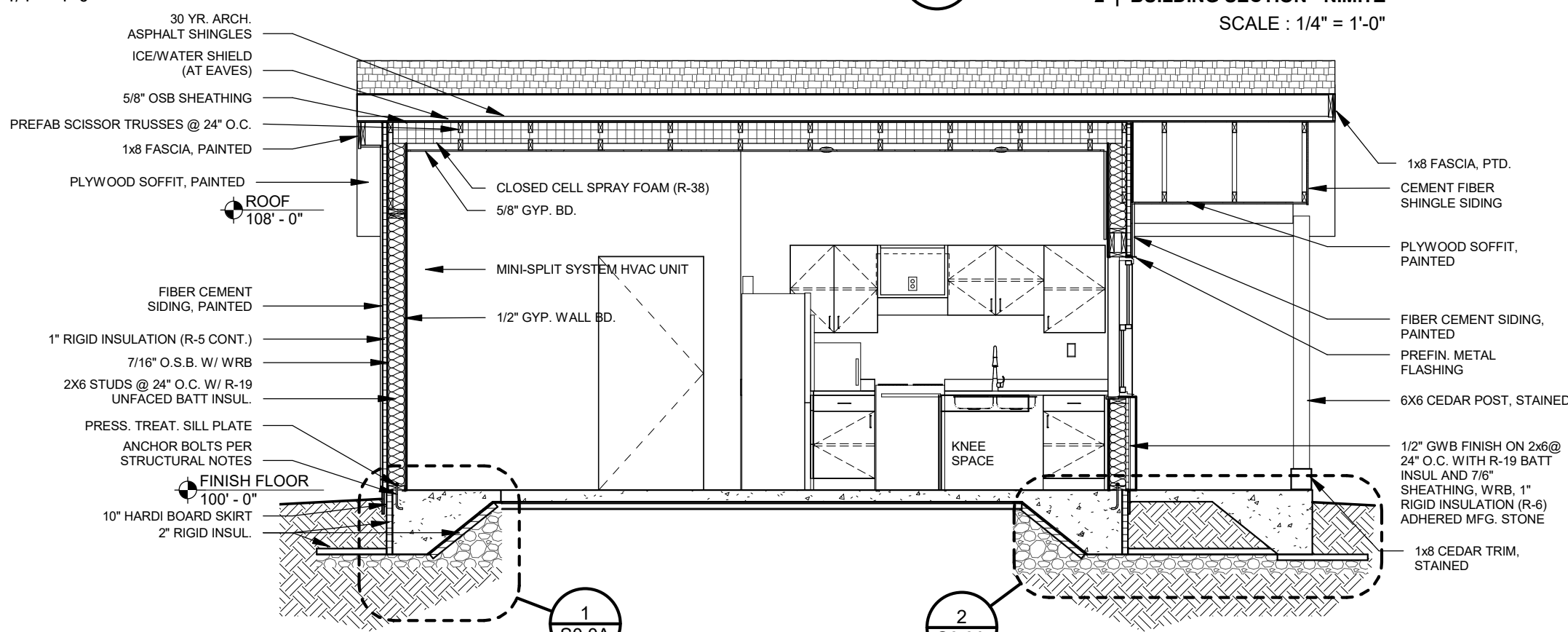




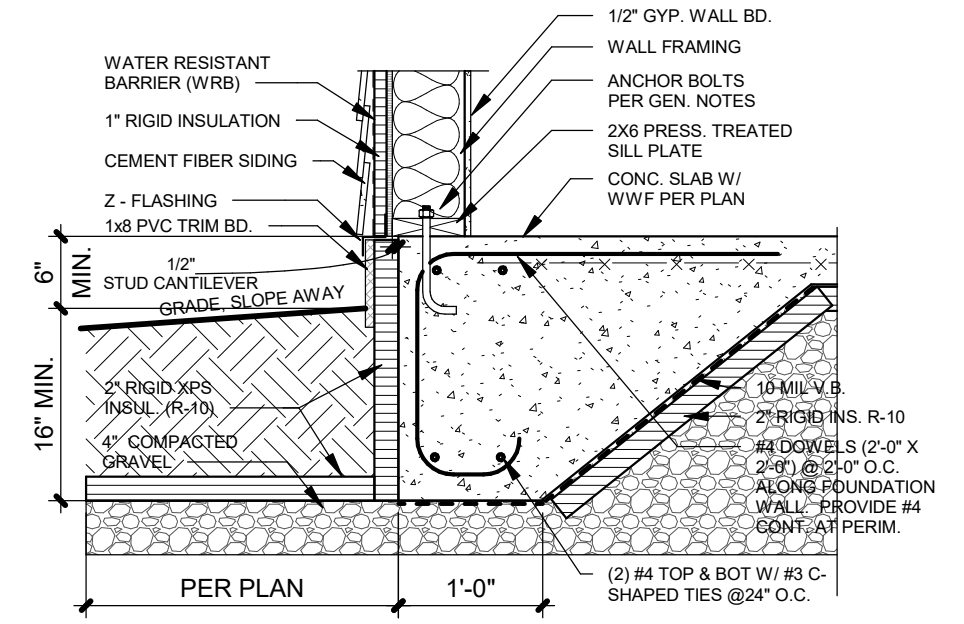
3 | INTERIOR ELEVATION
SCALE : 1/4" = 1'-0"



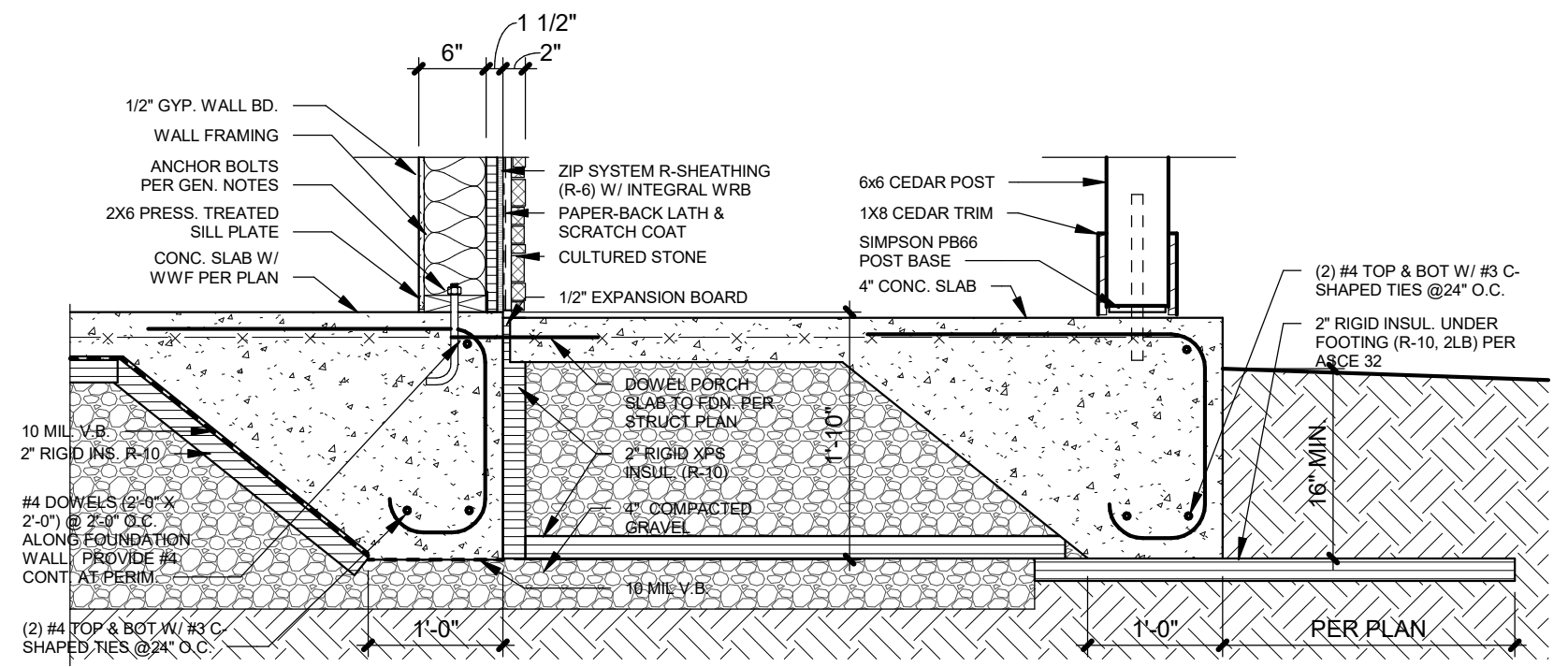
2 | BUILDING SECTION - NIMITZ
SCALE : 1/4" = 1'-0"



1 | BUILDING SECTION - NIMITZ
SCALE : 1/4" = 1'-0"

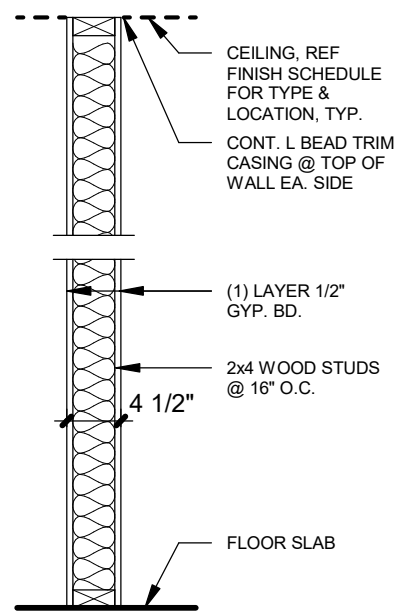


1 | FOUNDATION DETAIL FPSF1 | 3/4" = 1'-0"

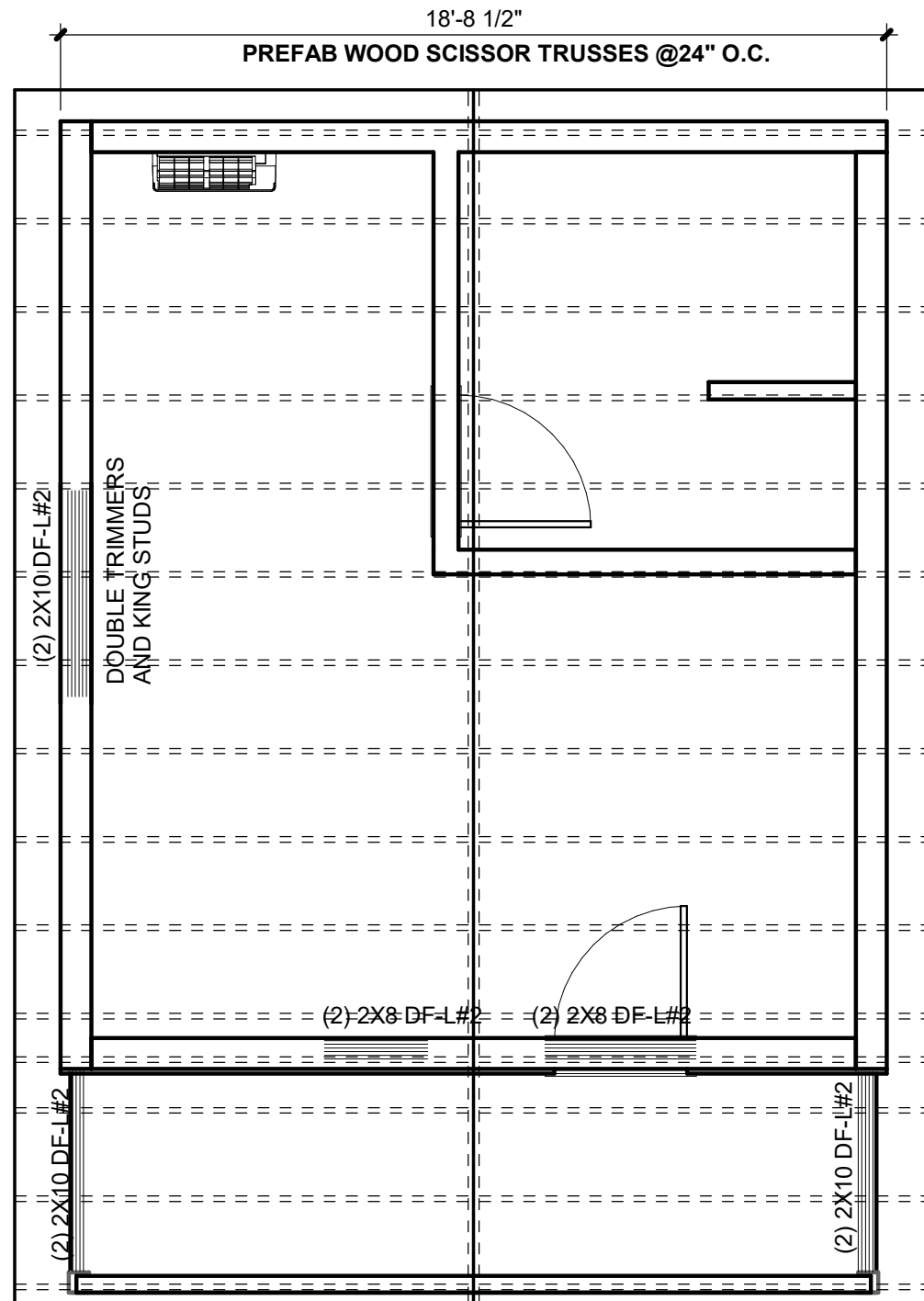


2 | FOUNDATION DETAIL FPSF PORCH | 3/4" = 1'-0"

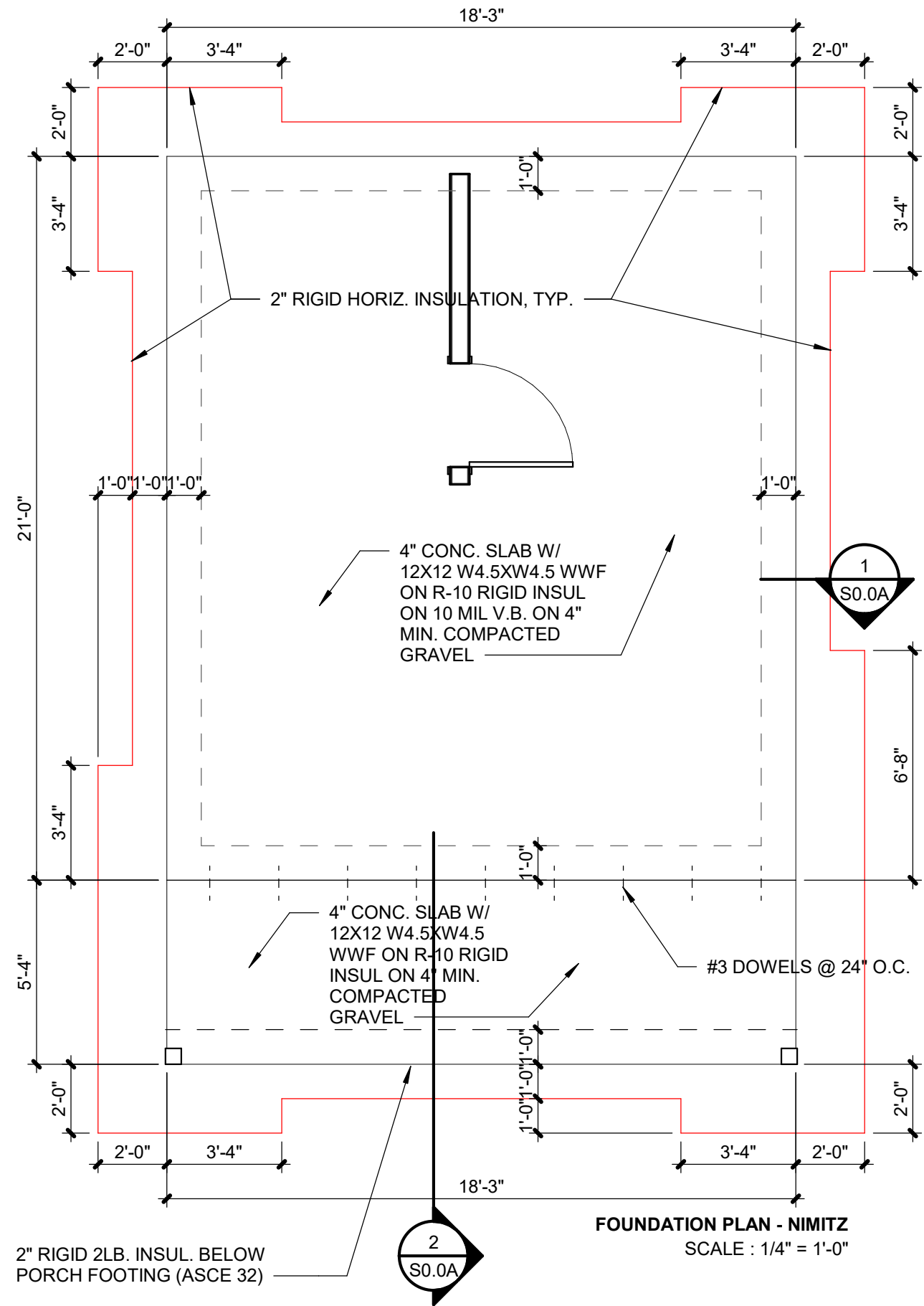




TYP. INTERIOR WALL FRAMING
SCALE : 1/4" = 1'-0"



ROOF FRAMING PLAN - NIMITZ
SCALE : 1/4" = 1'-0"

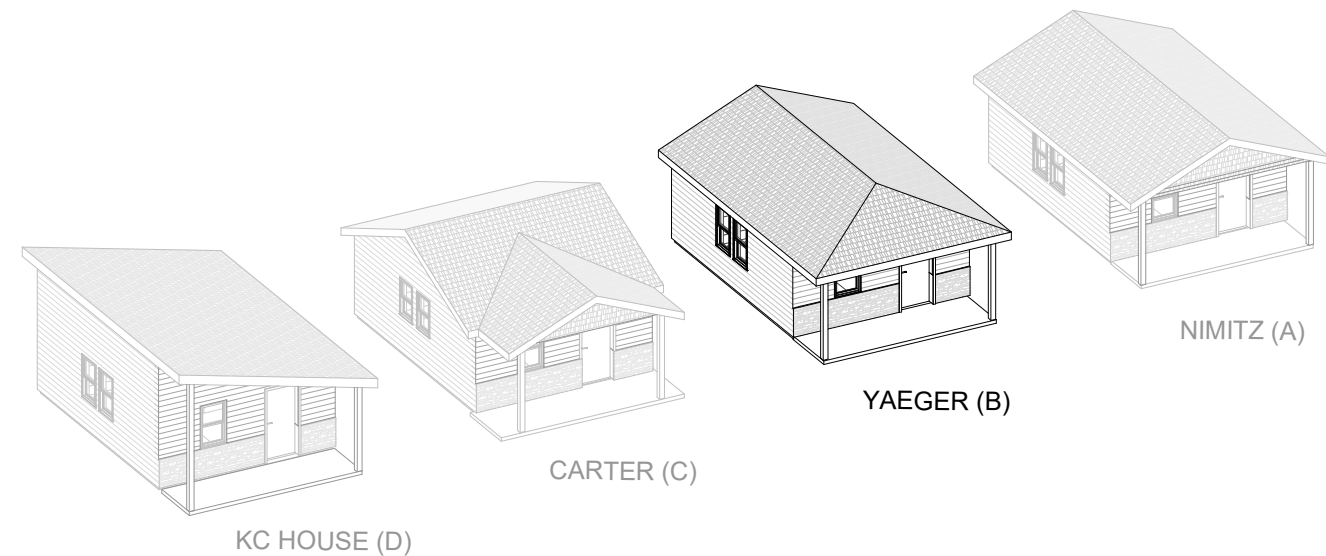


FOUNDATION PLAN - NIMITZ
SCALE : 1/4" = 1'-0"

VETERAN'S COMMUNITY PROJECT

TINY FAMILY HOMES - YEAGER HOUSE

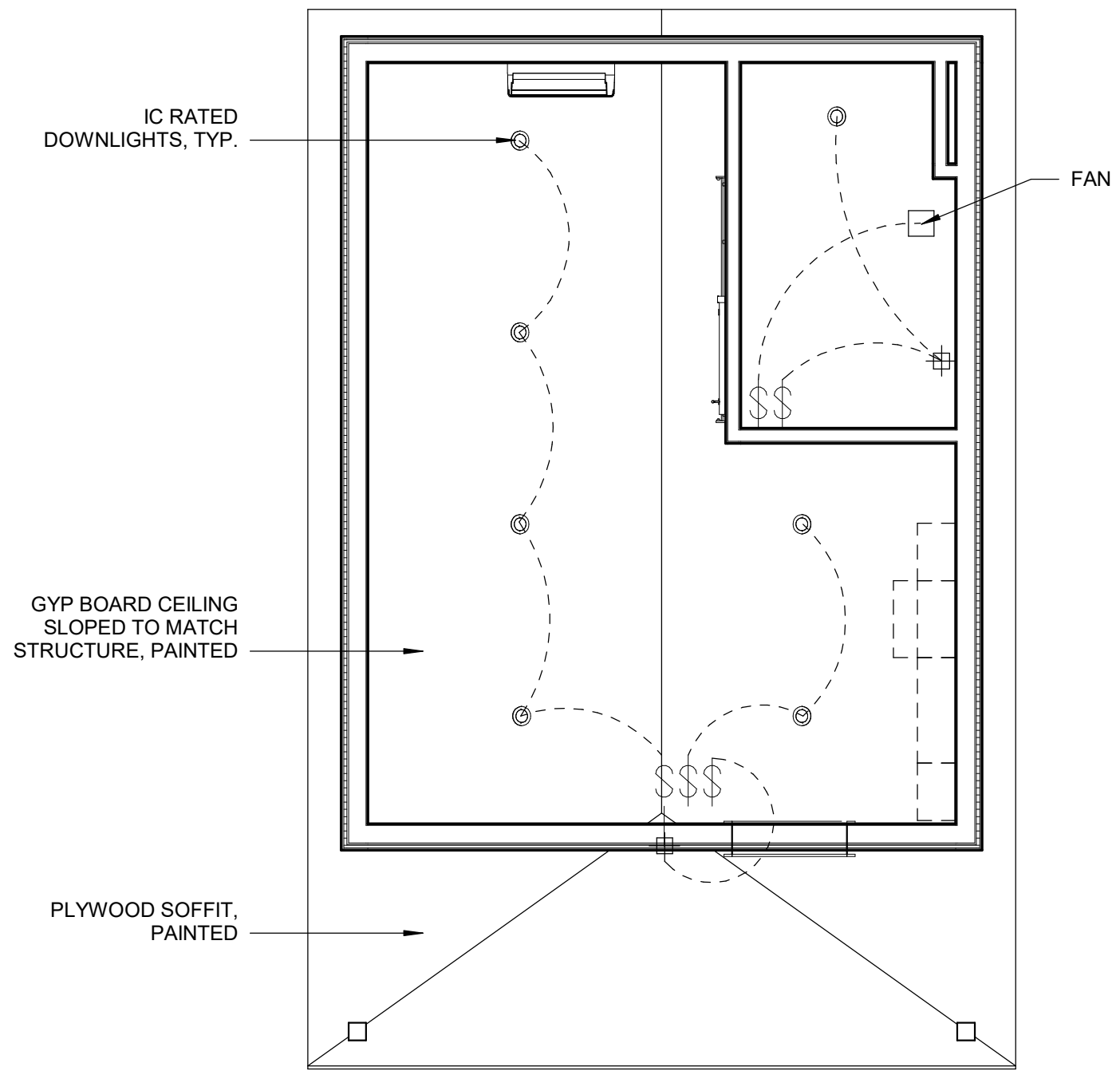
MILWAUKEE, WISCONSIN



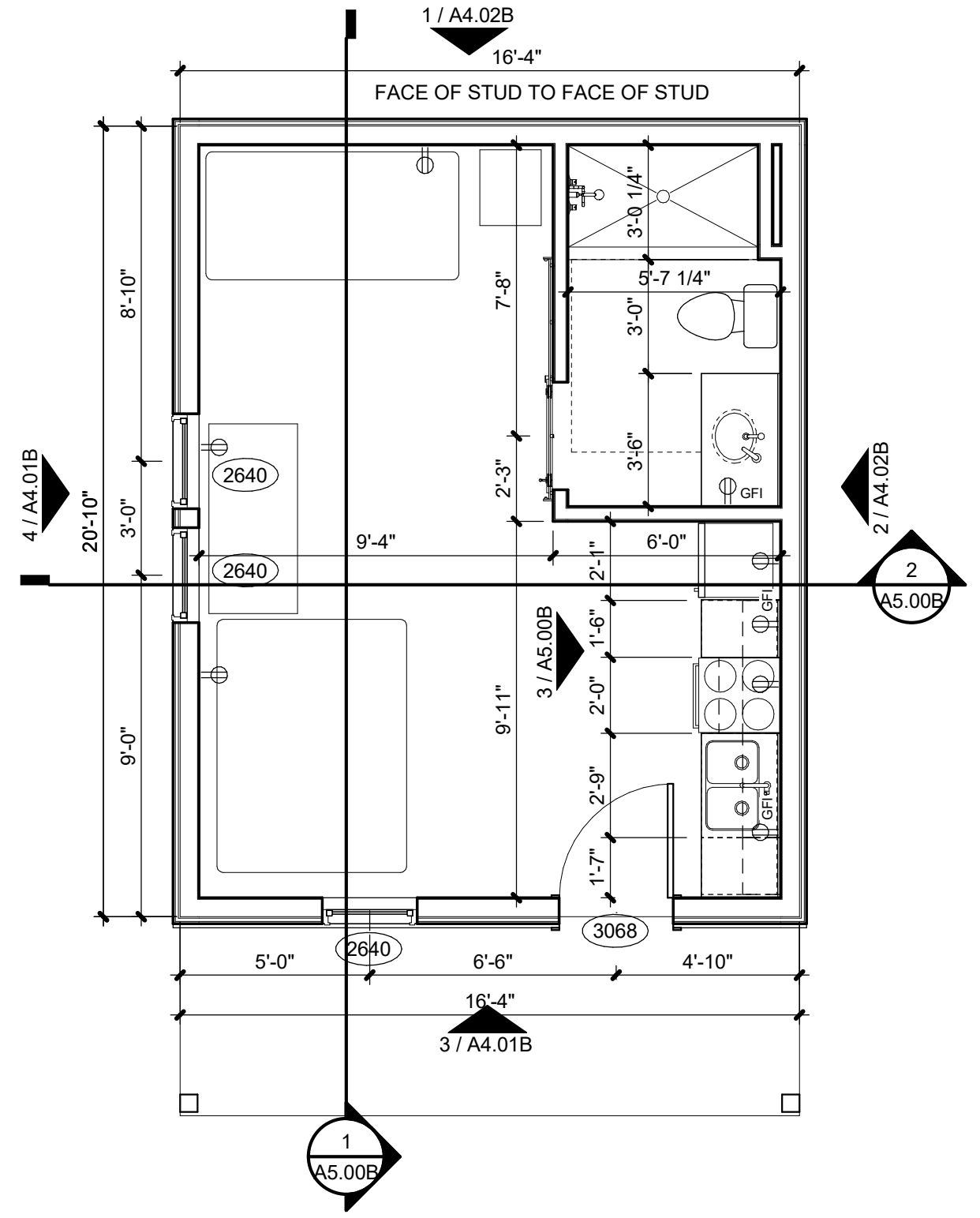
SHEET LIST

- A0.00B COVER SHEET - YEAGER
- A1.01B FLOOR PLAN & RCP
- A4.01B EXTERIOR ELEVATIONS
- A4.02B EXTERIOR ELEVATIONS
- A5.00B BUILDING SECTIONS
- S1.01B STRUCTURAL

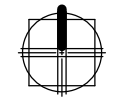


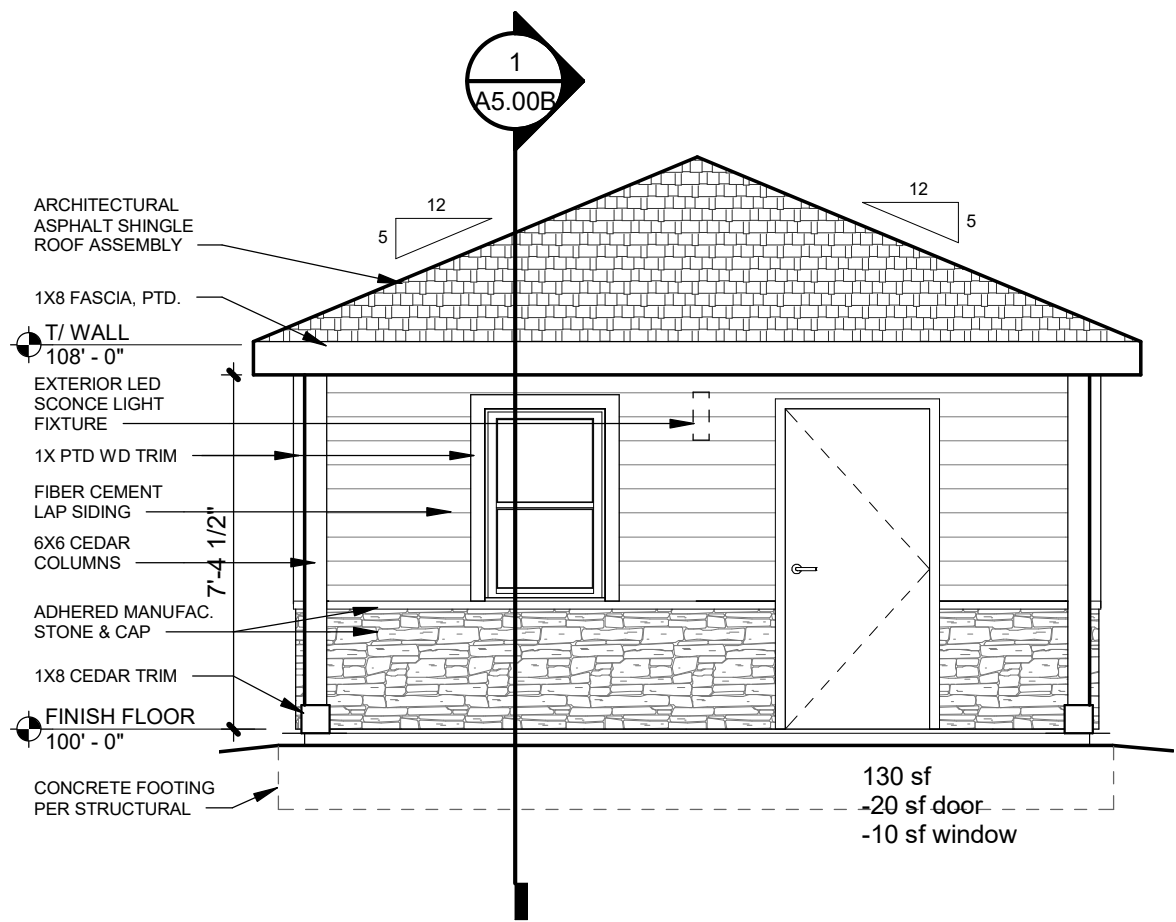


REFLECTED CEILING PLAN - YEAGER
SCALE : 1/4" = 1'-0"

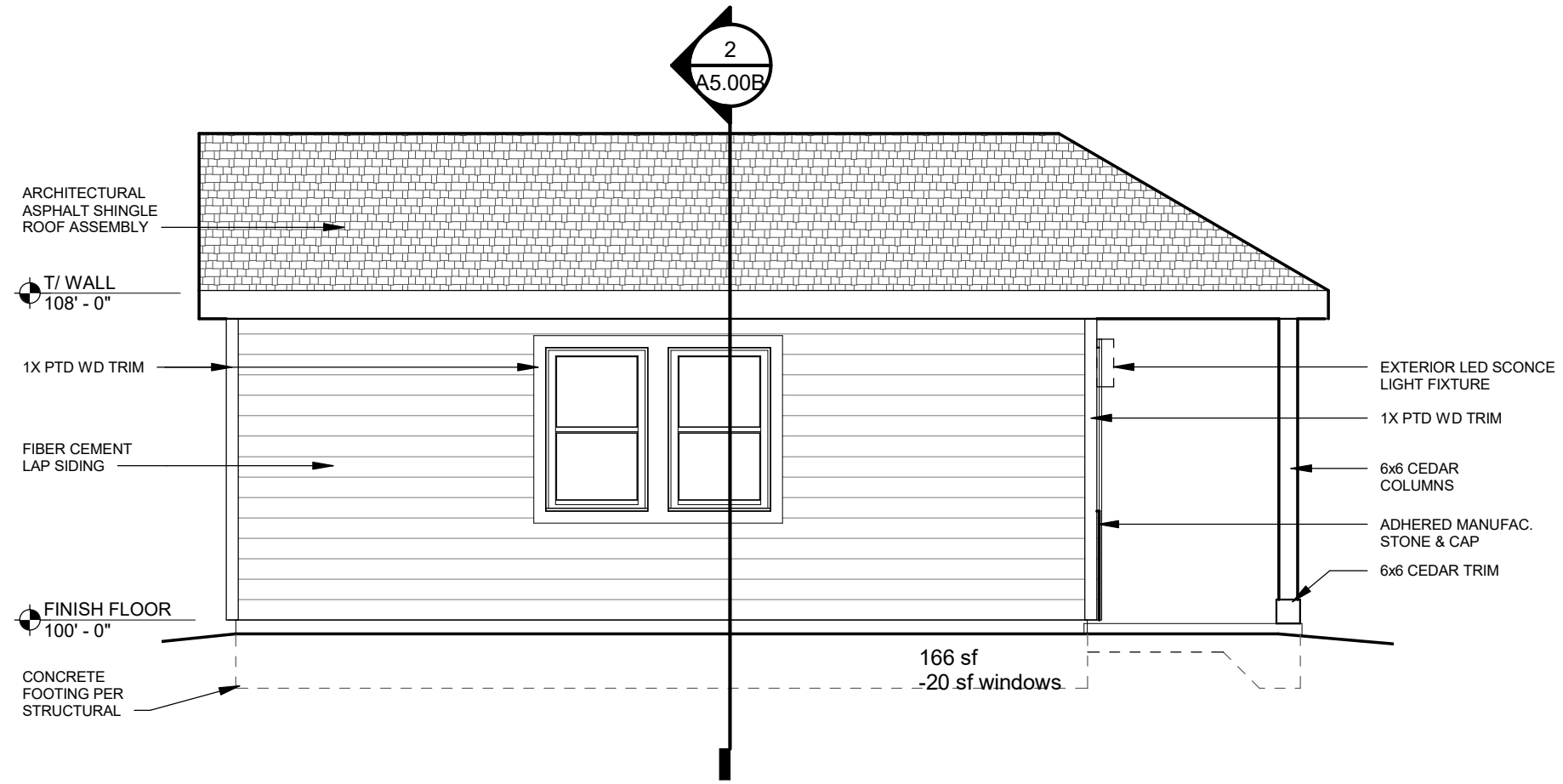


FLOOR PLAN - YEAGER
SCALE : 1/4" = 1'-0"



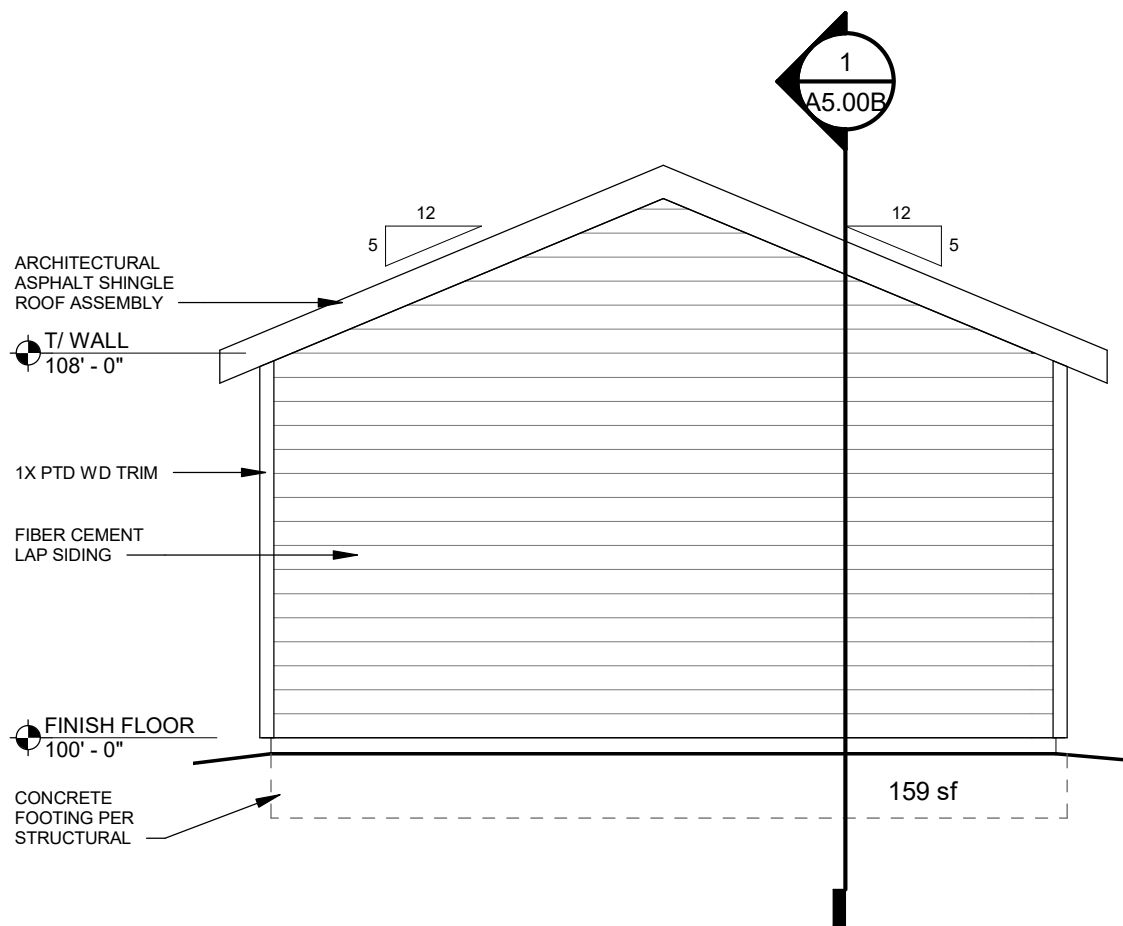


SOUTH ELEVATION - YEAGER
SCALE : 1/4" = 1'-0"

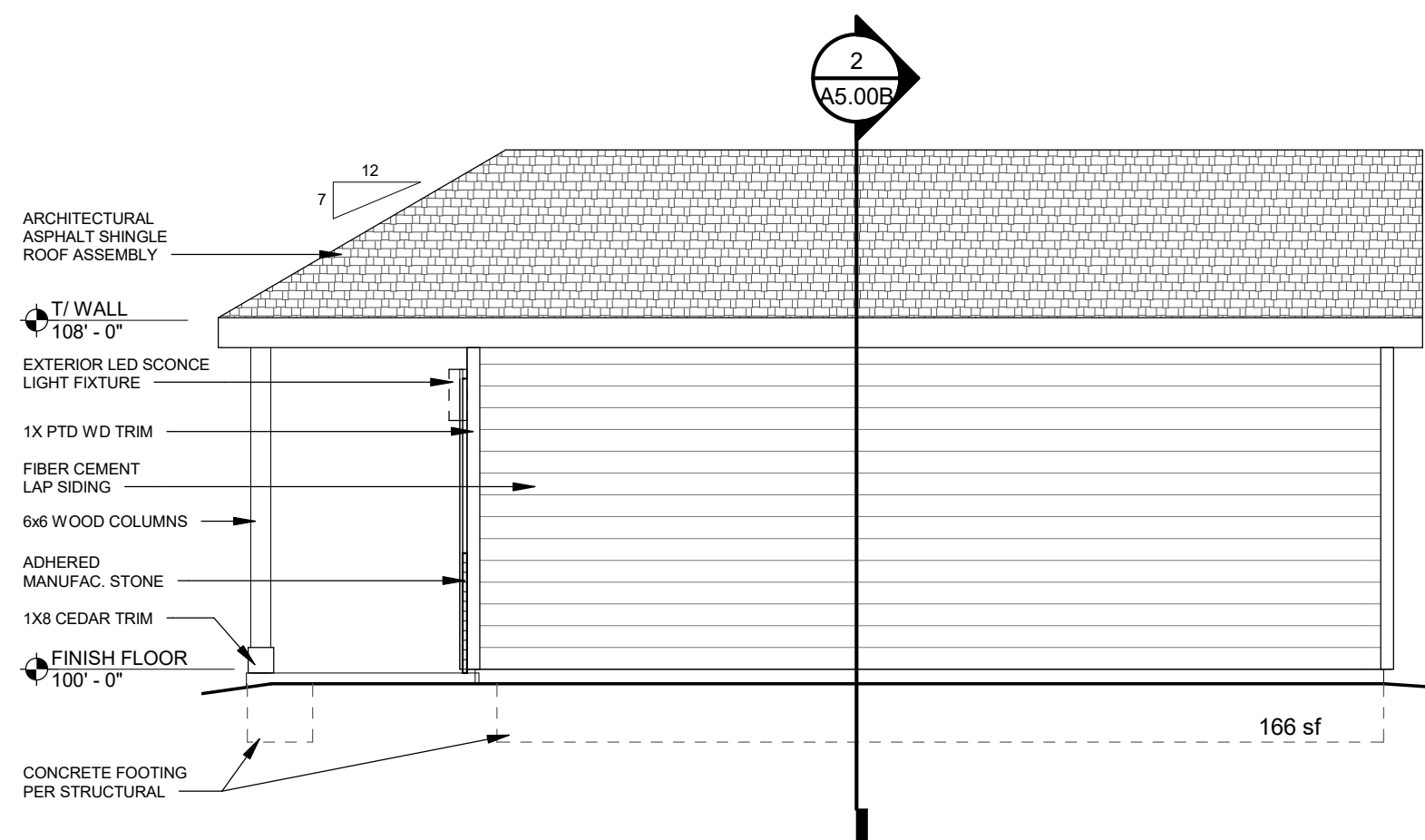


WEST ELEVATION - YEAGER
SCALE : 1/4" = 1'-0"



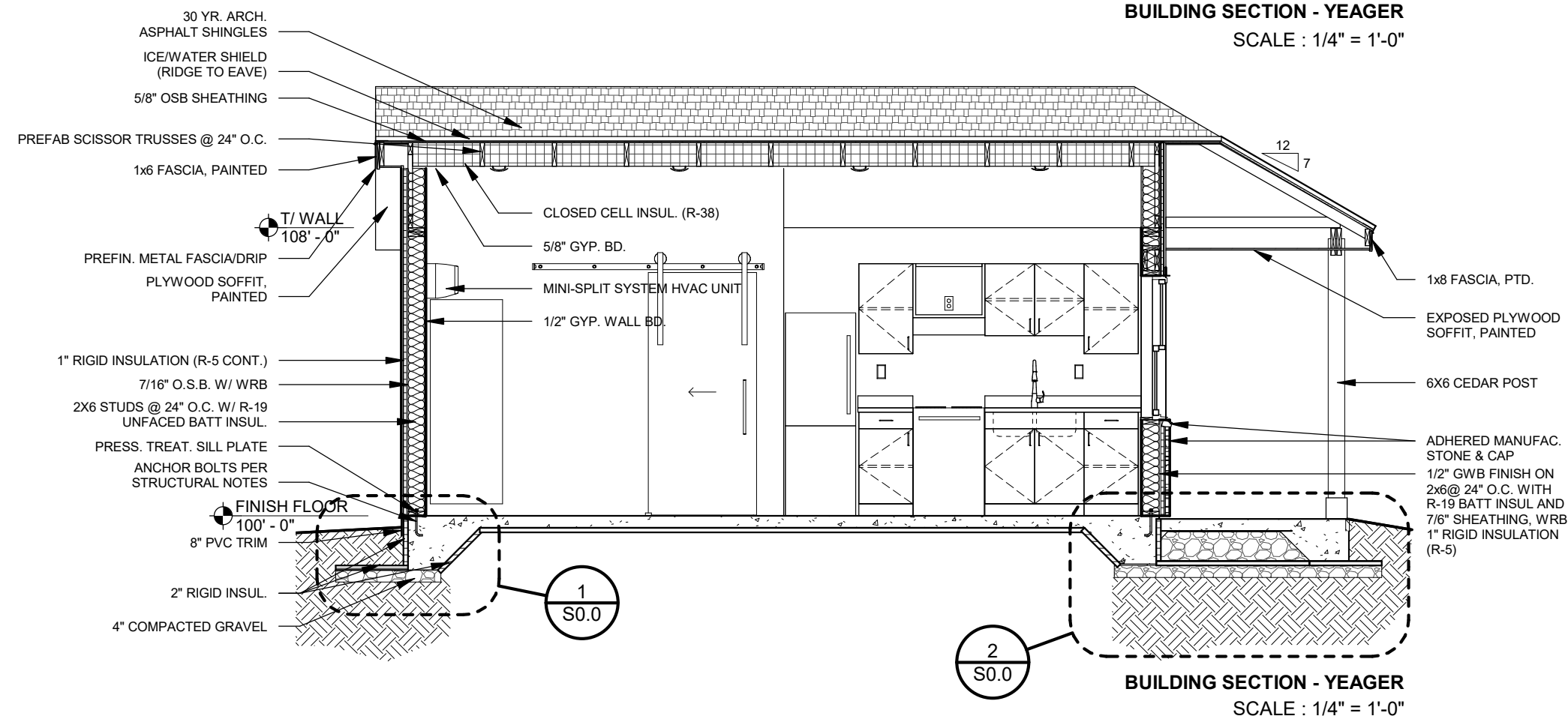
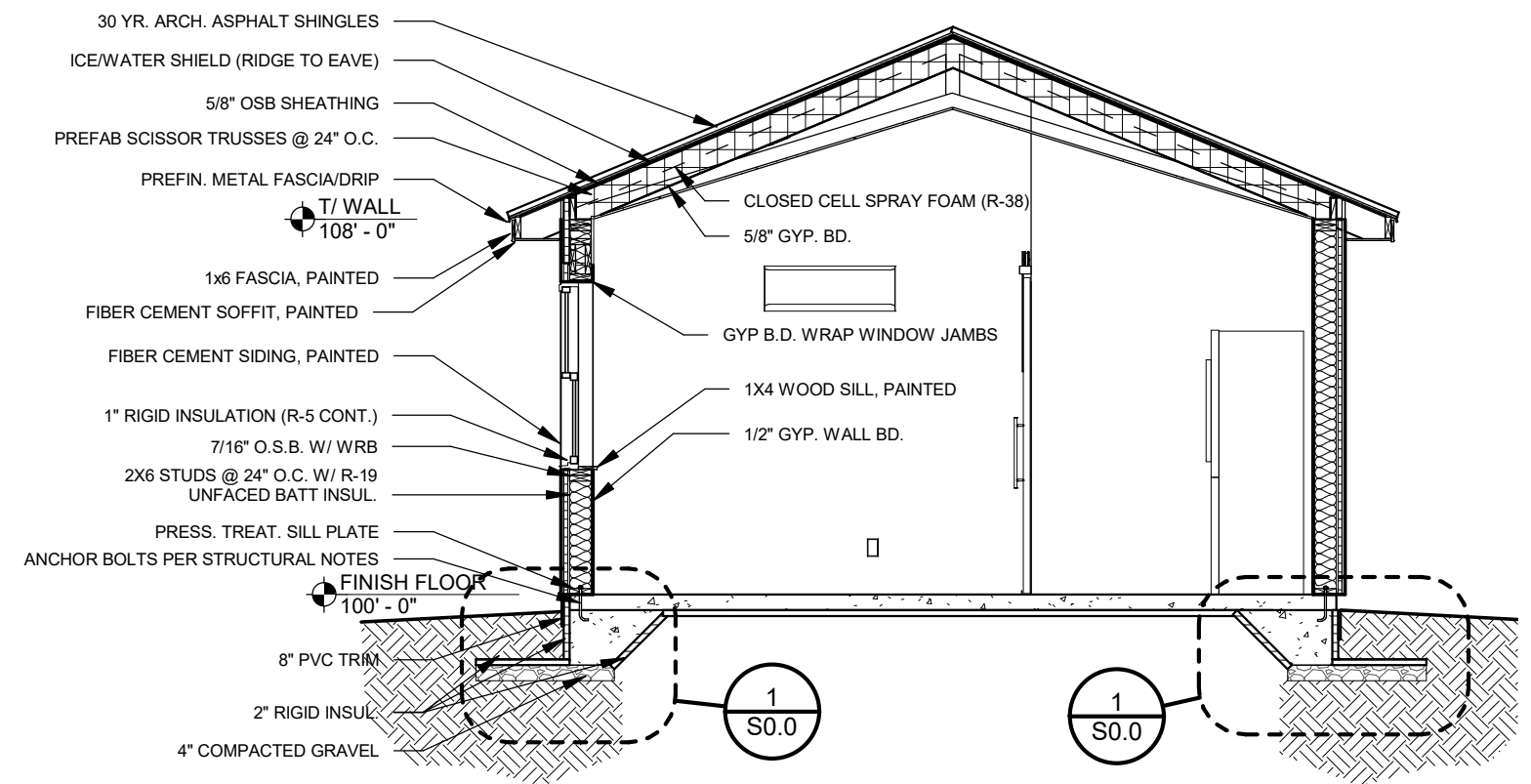
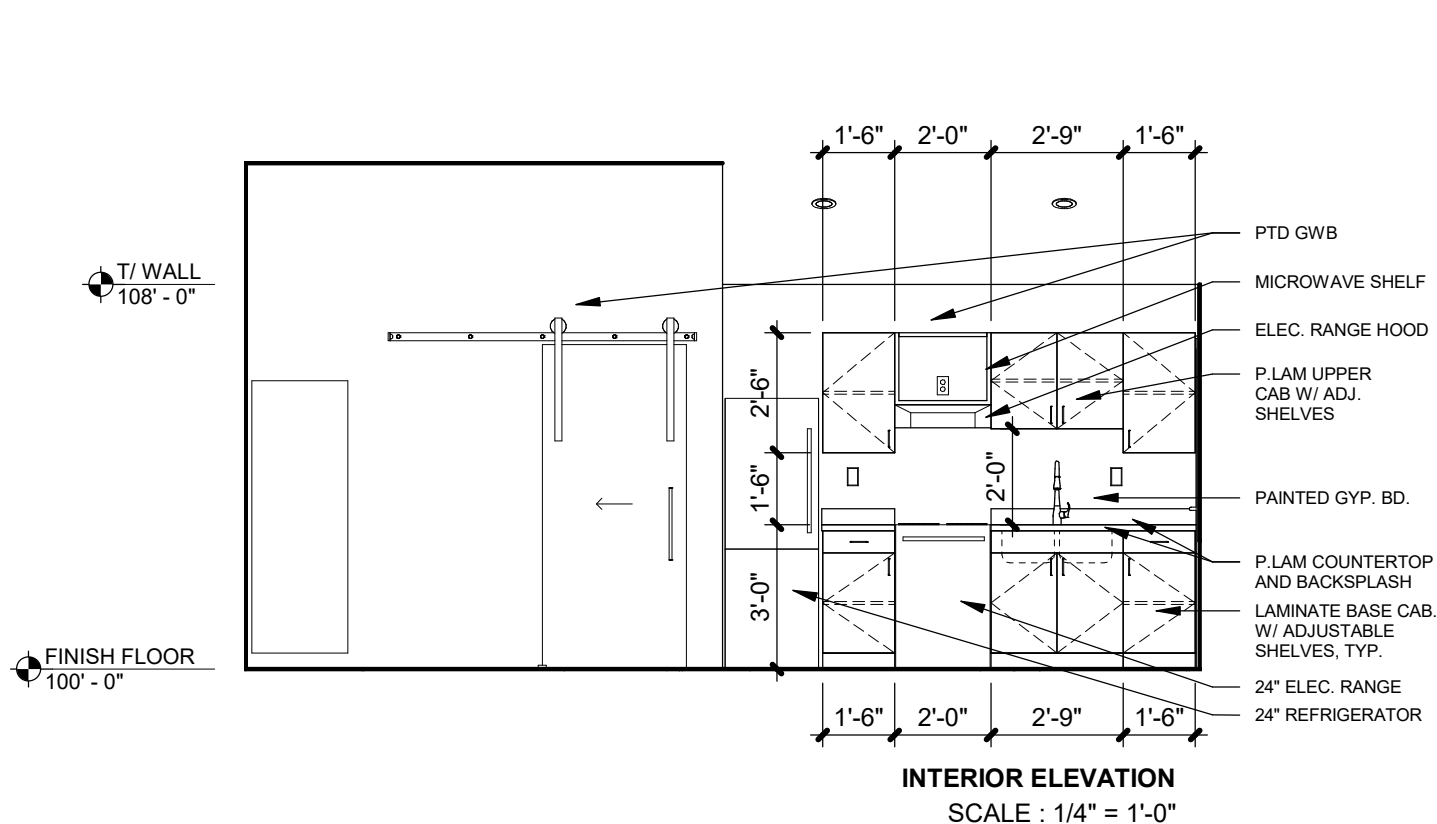


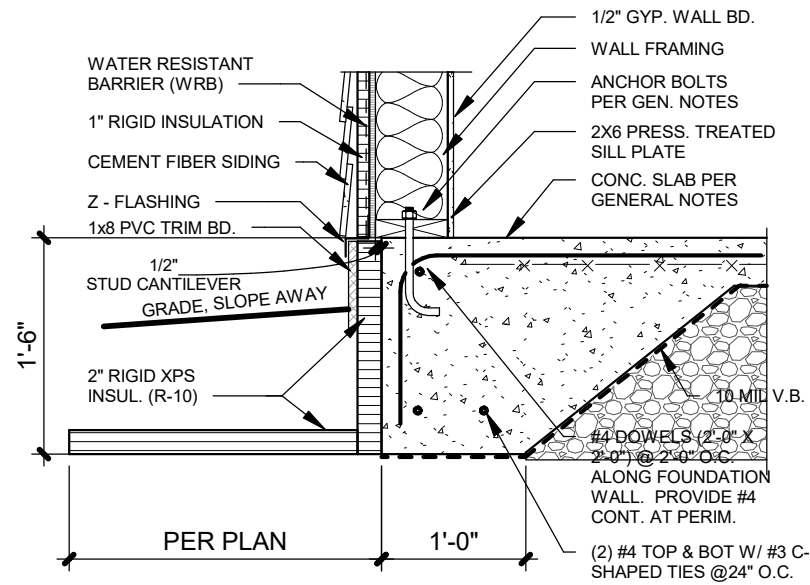
NORTH ELEVATION - YEAGER
SCALE : 1/4" = 1'-0"



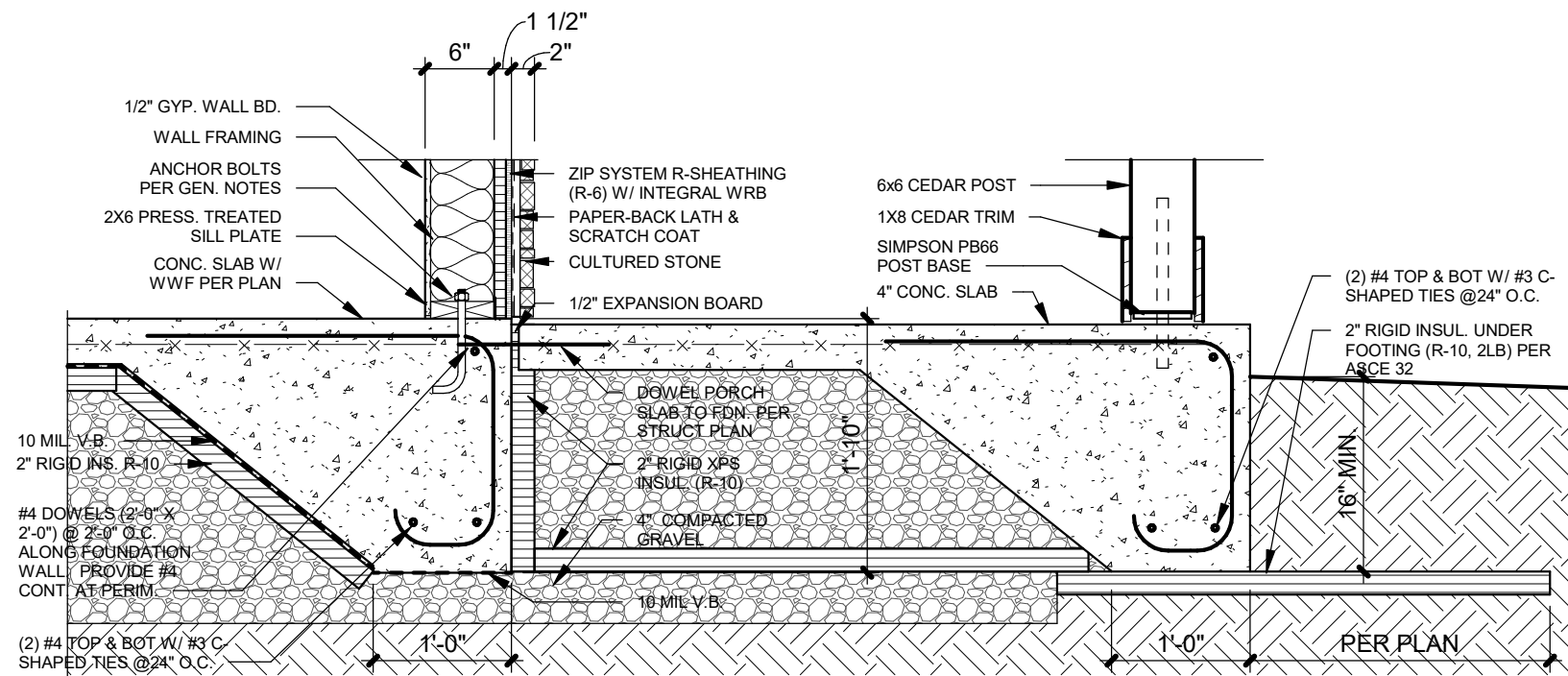
EAST ELEVATION - YEAGER
SCALE : 1/4" = 1'-0"



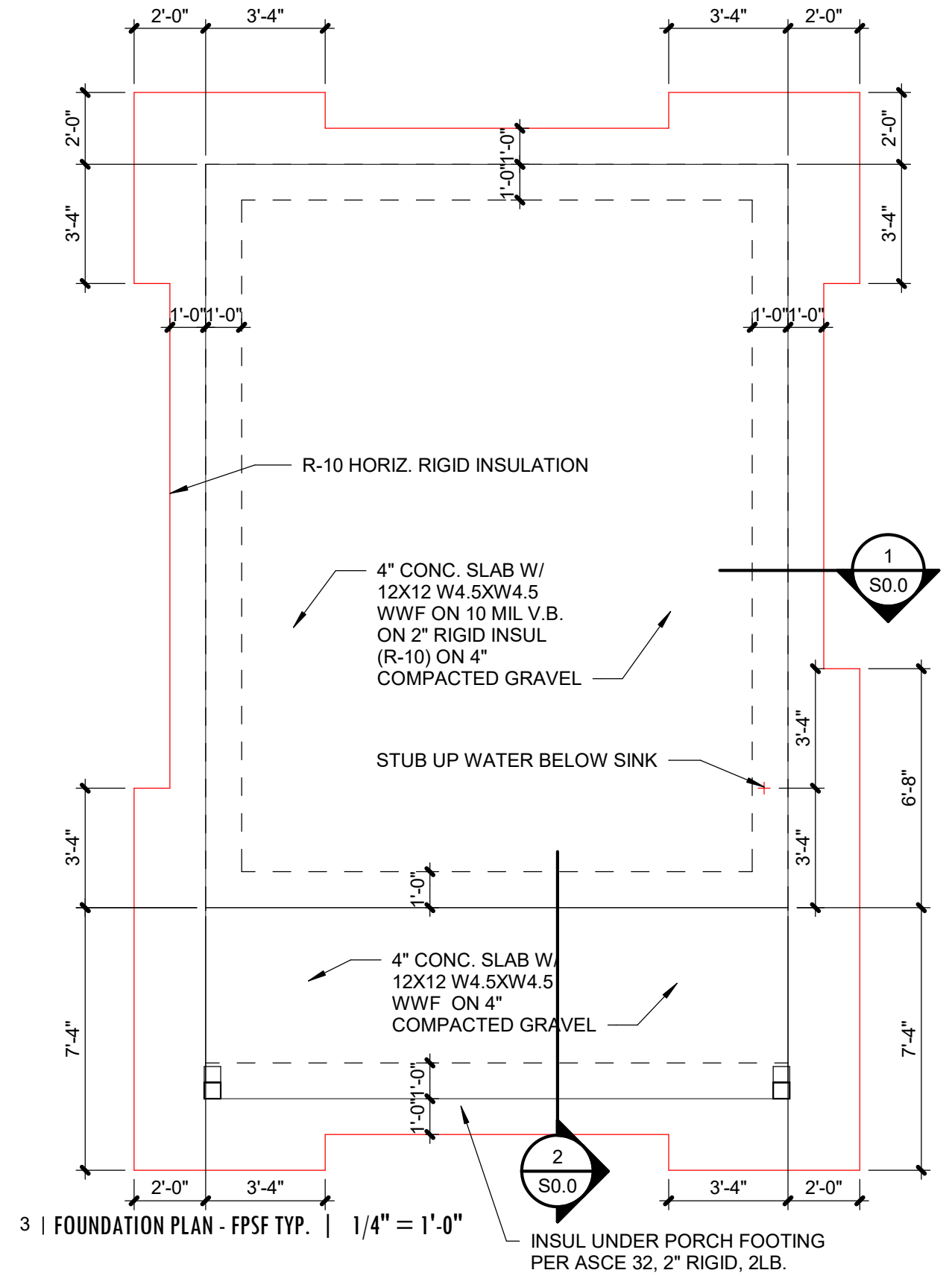




1 | FOUNDATION DETAIL FPSF | 3/4" = 1'-0"

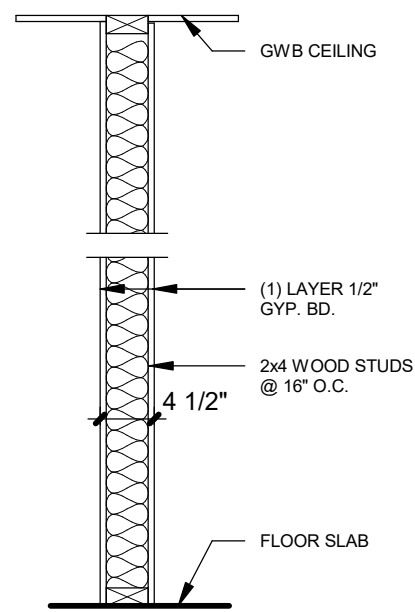


2 | FOUNDATION DETAIL FPSF PORCH | 3/4" = 1'-0"

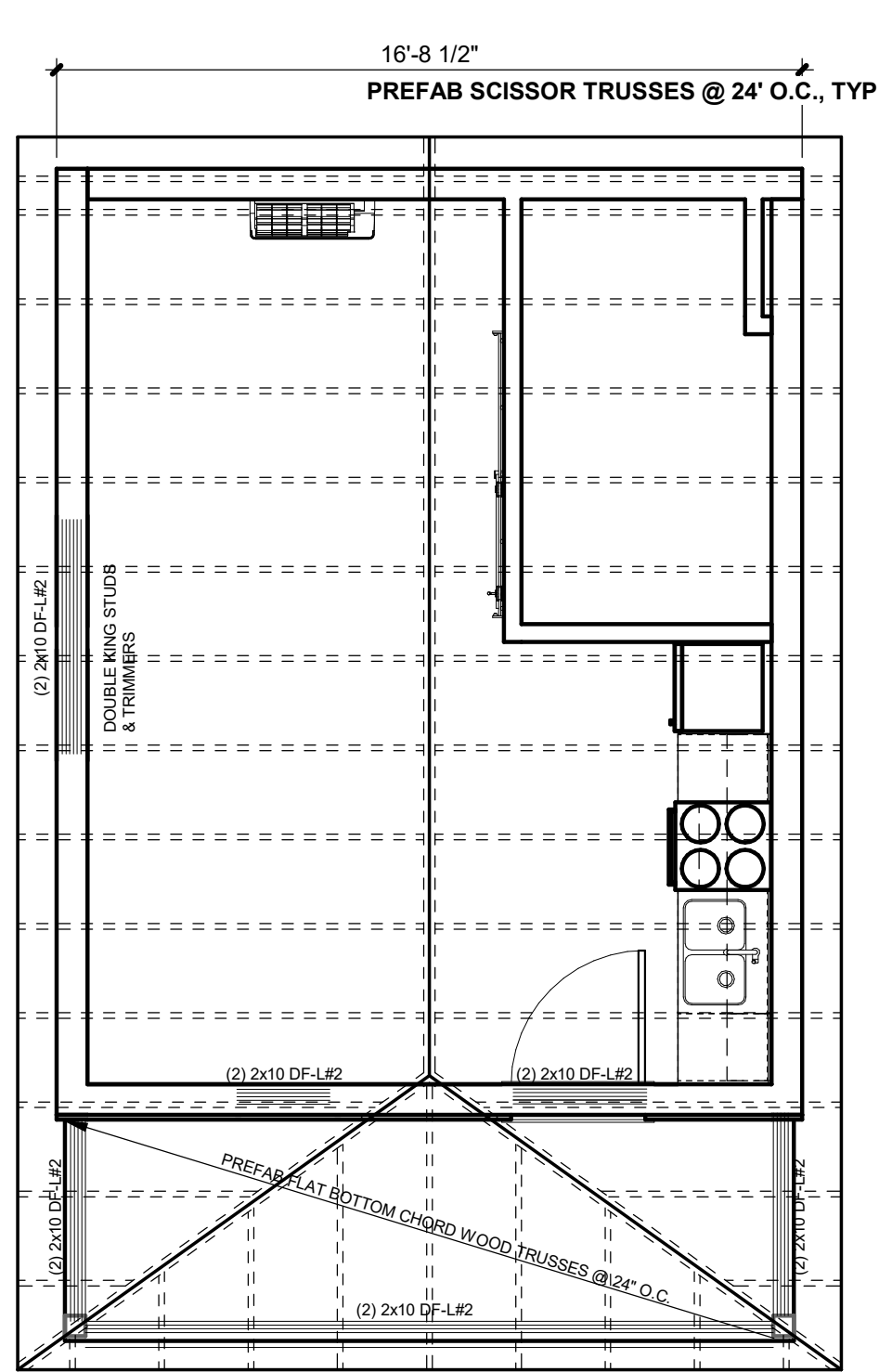


3 | FOUNDATION PLAN - FPSF TYP. | 1/4" = 1'-0"

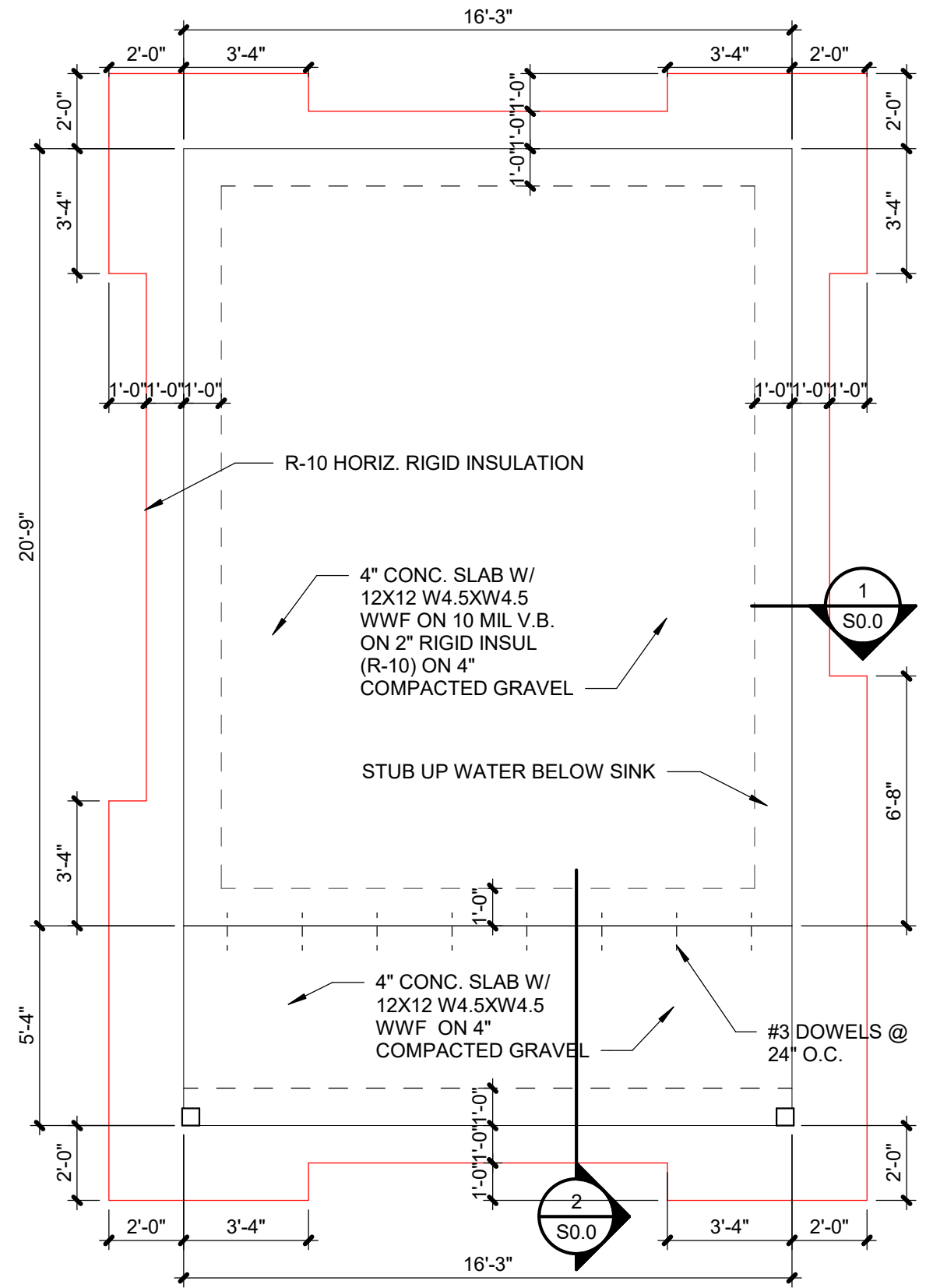




5 | TYP. INTERIOR WALL FRAMING
SCALE : 1/4" = 1'-0"



3 | ROOF PLAN - YEAGER
SCALE : 1/4" = 1'-0"



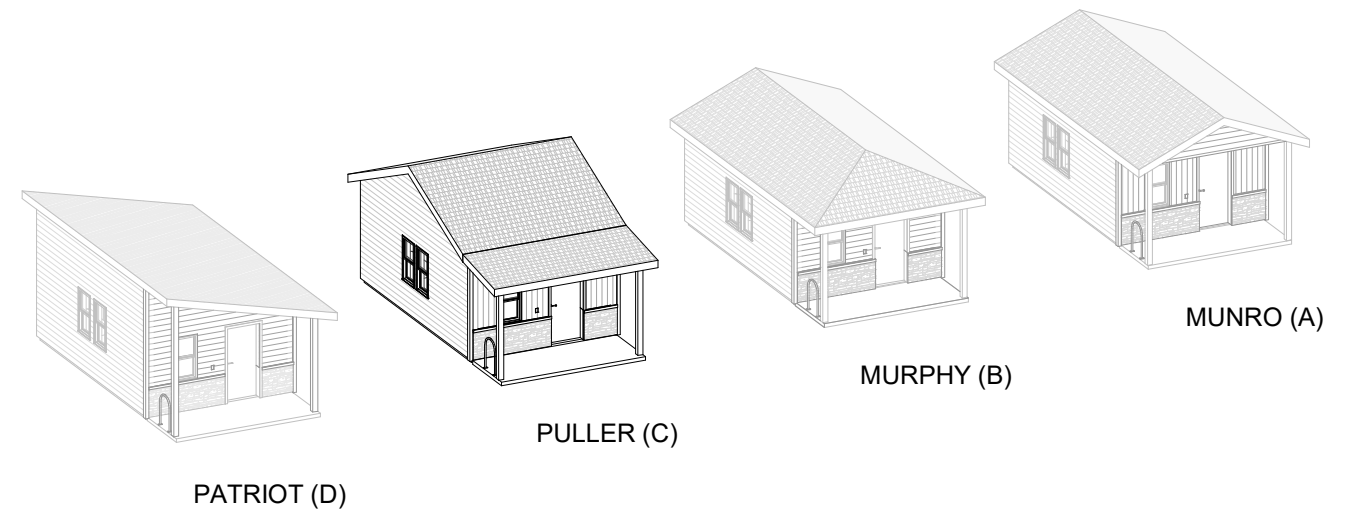
1 | FOUNDATION PLAN - YEAGER
SCALE : 1/4" = 1'-0"



VETERAN'S COMMUNITY PROJECT

TINY HOMES - PULLER HOUSE

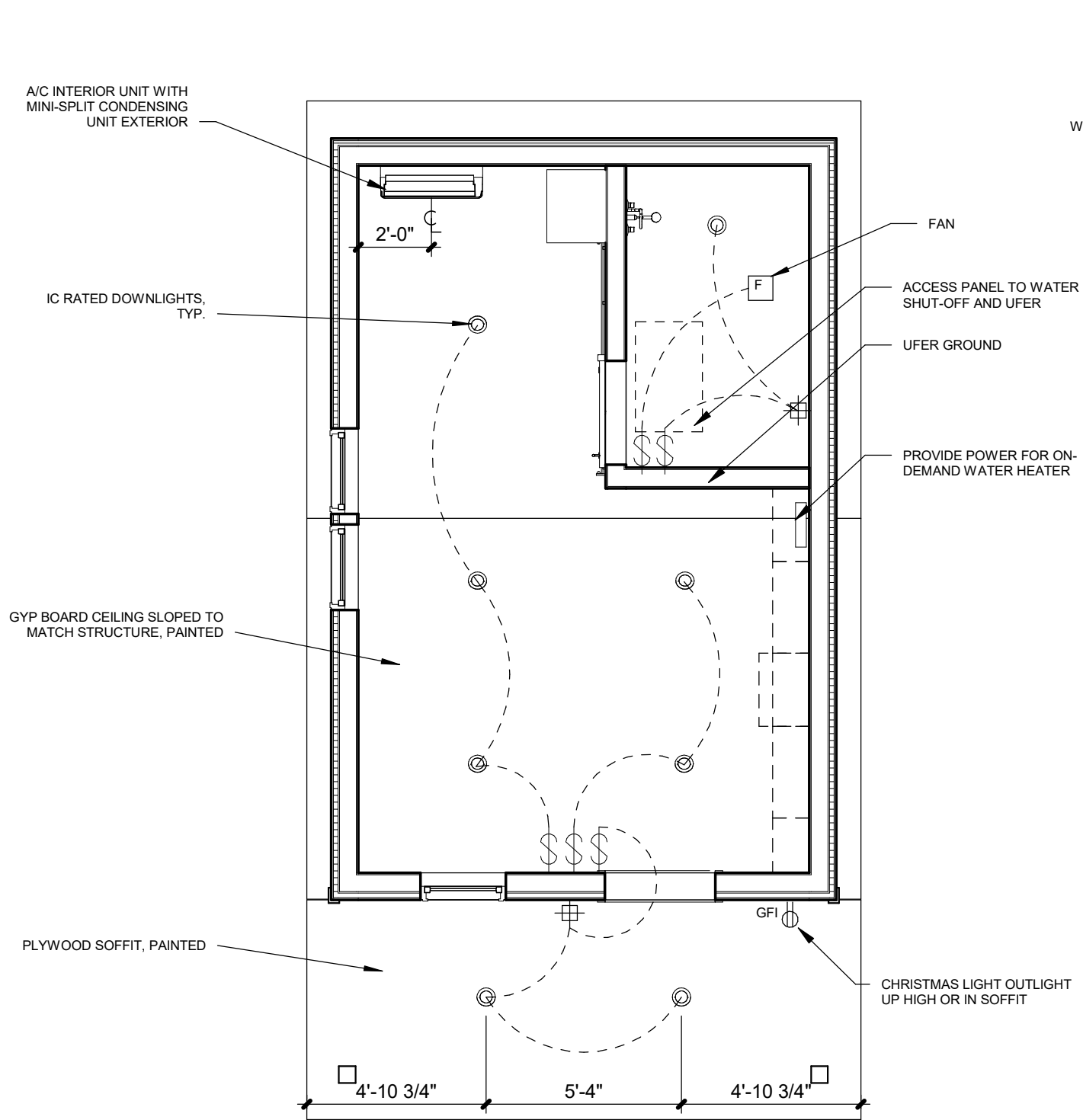
MILWAUKEE, WISCONSIN



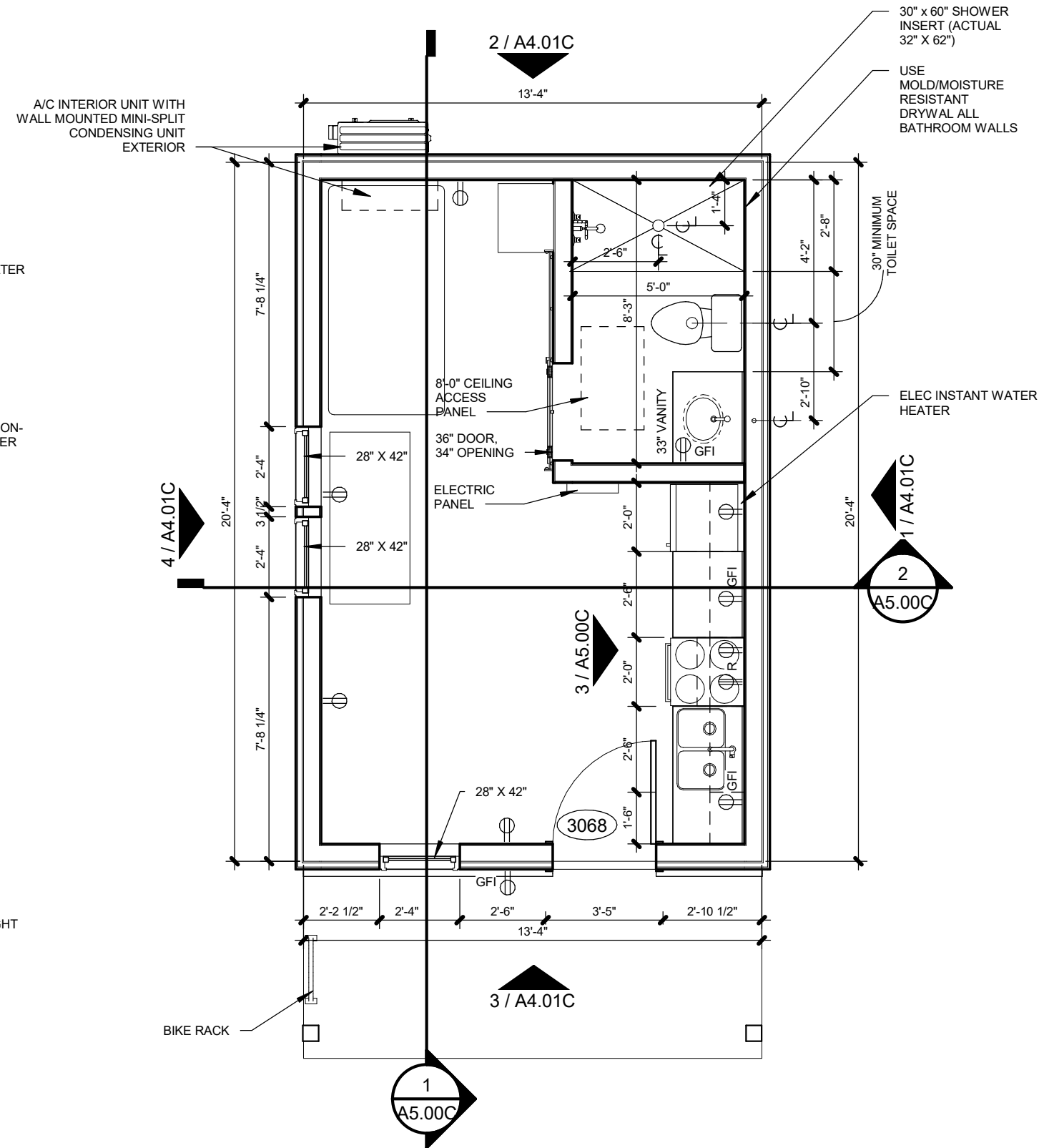
SHEET LIST

A0.00C	COVER SHEET
A1.01C	FLOOR PLAN & RCP
A4.01C	EXTERIOR ELEVATIONS
A5.00C	BUILDING SECTIONS
S1.01C	STRUCTURAL



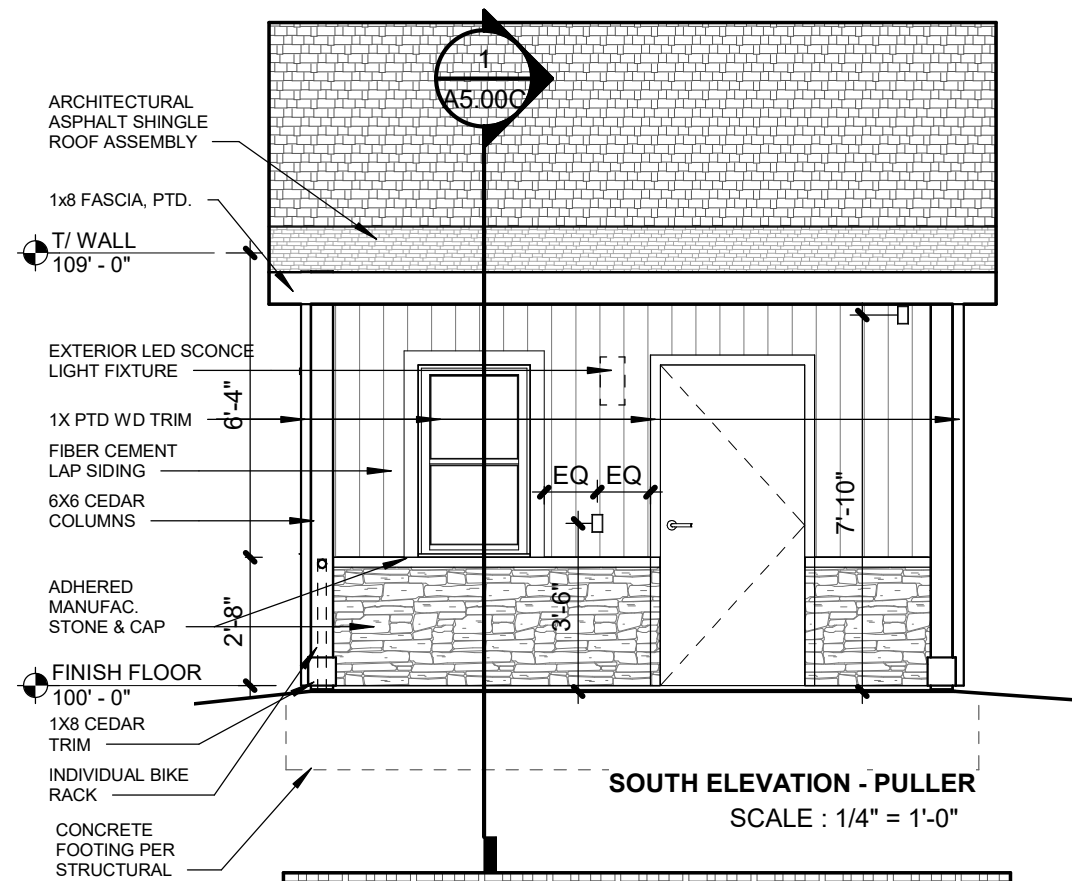


REFLECTED CEILING PLAN - PULLER
SCALE : 1/4" = 1'-0"

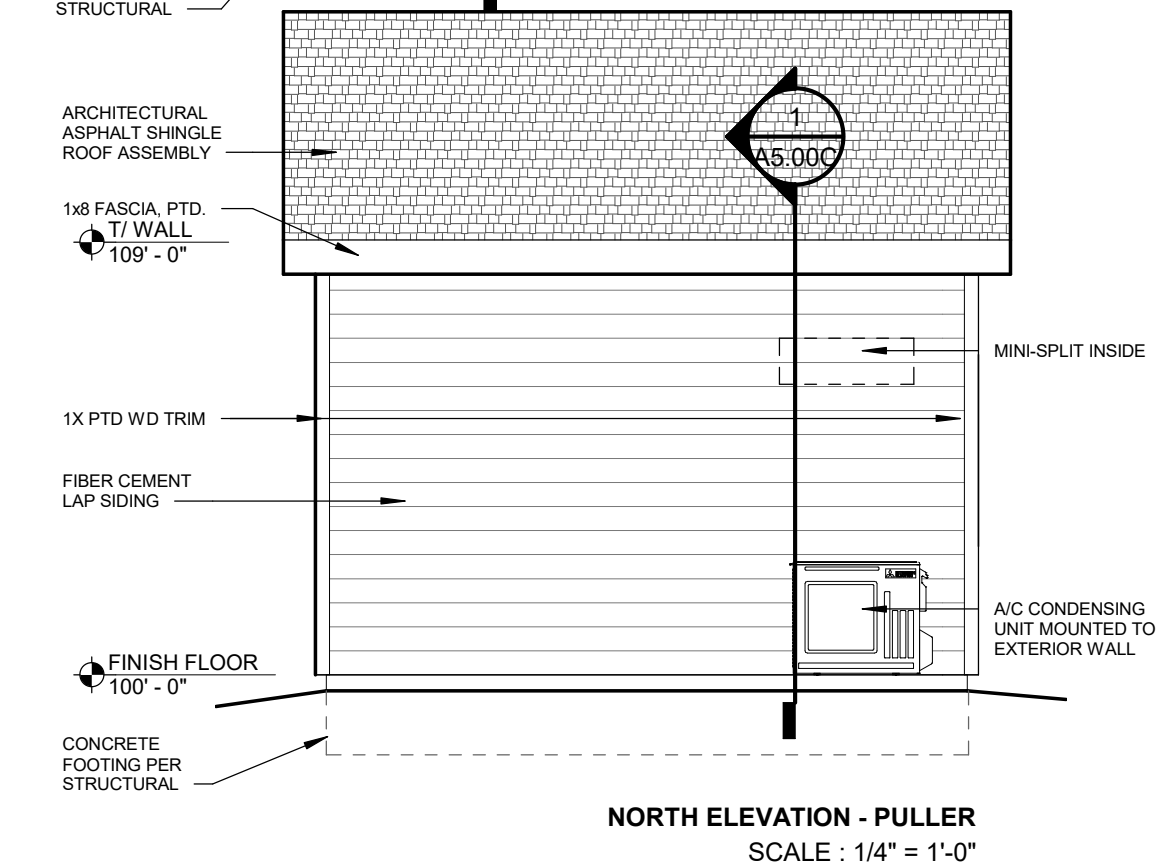


FLOOR PLAN - PULLER
SCALE : 1/4" = 1'-0"

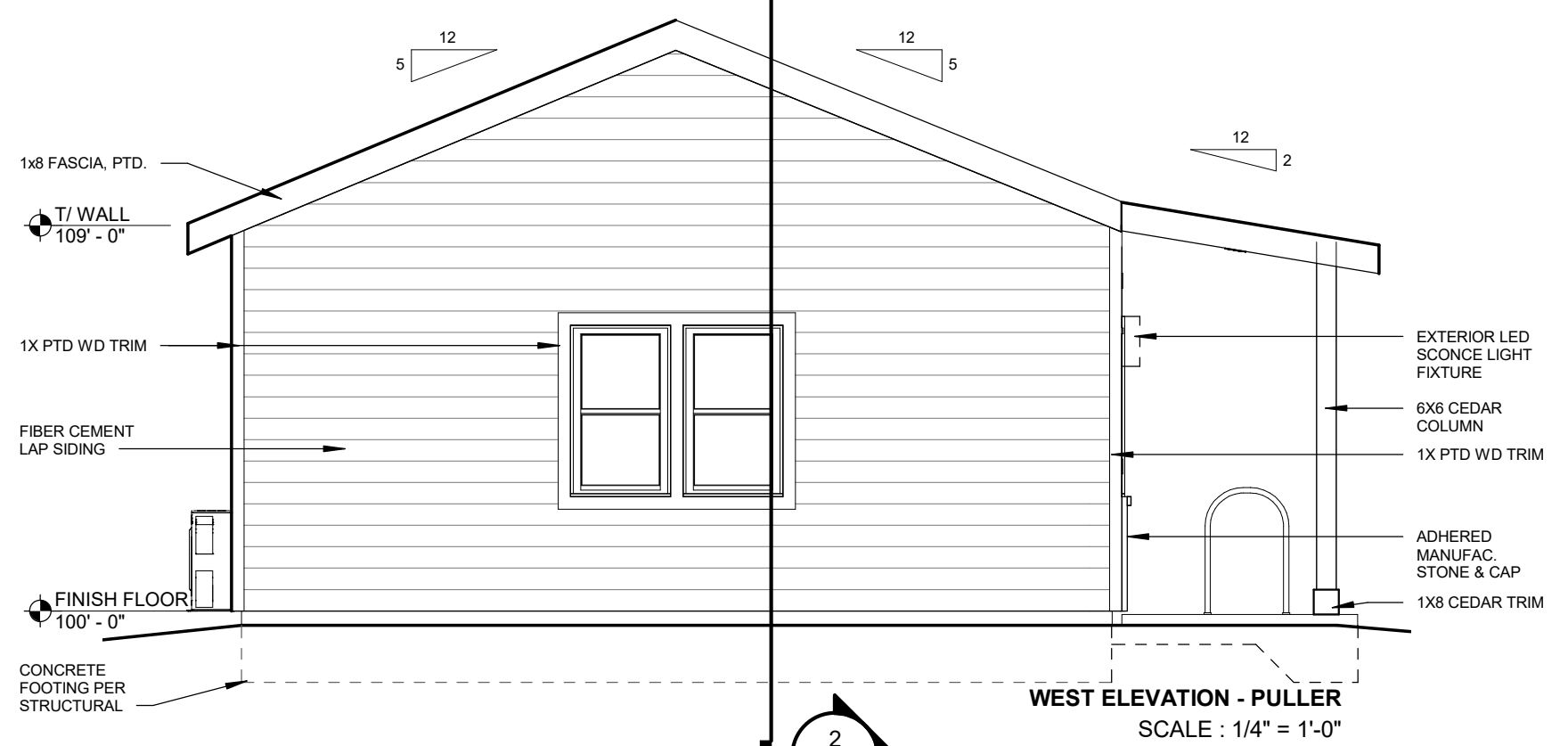




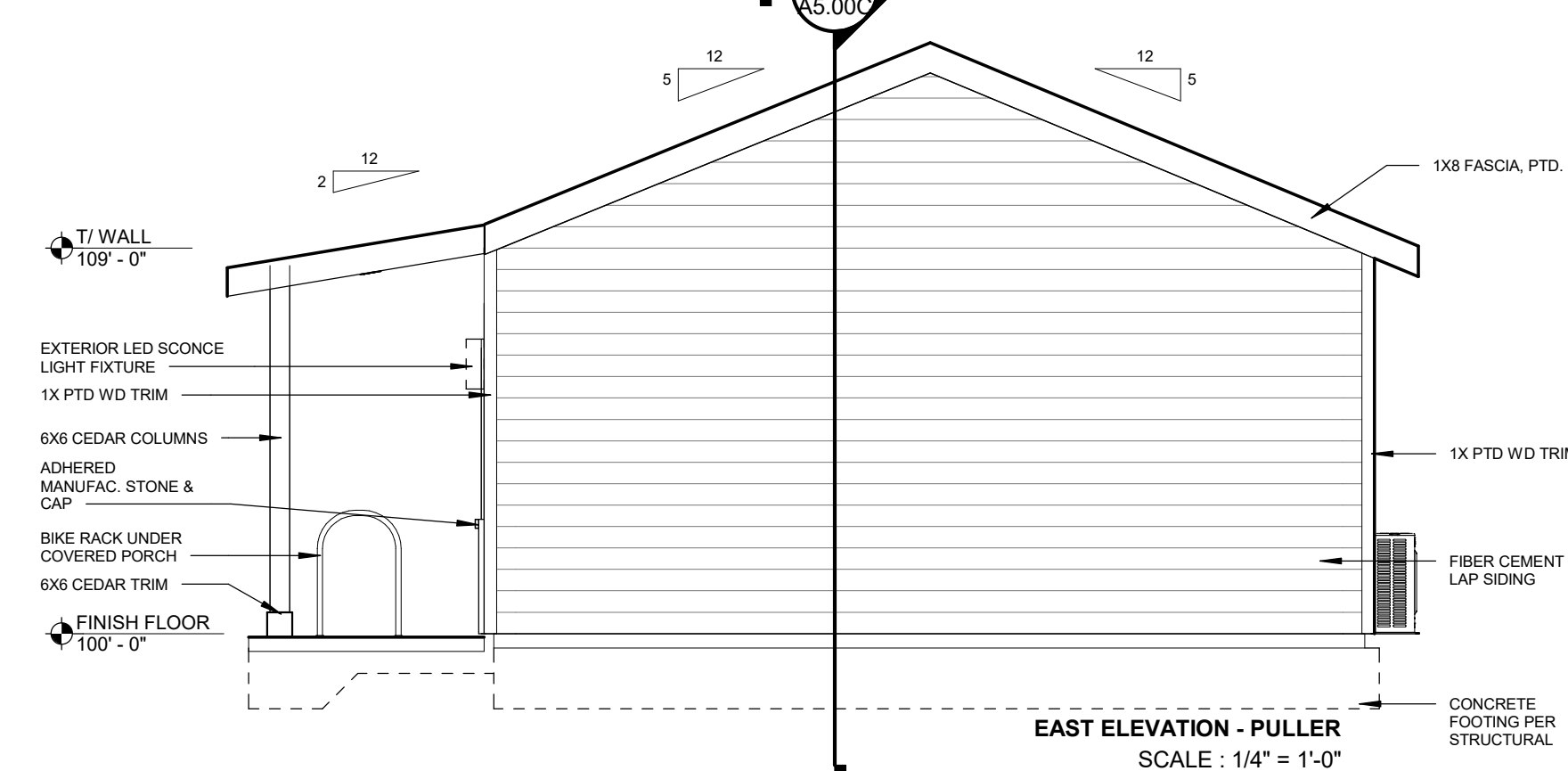
SOUTH ELEVATION - PULLER
SCALE : 1/4" = 1'-0"



NORTH ELEVATION - PULLER
SCALE : 1/4" = 1'-0"



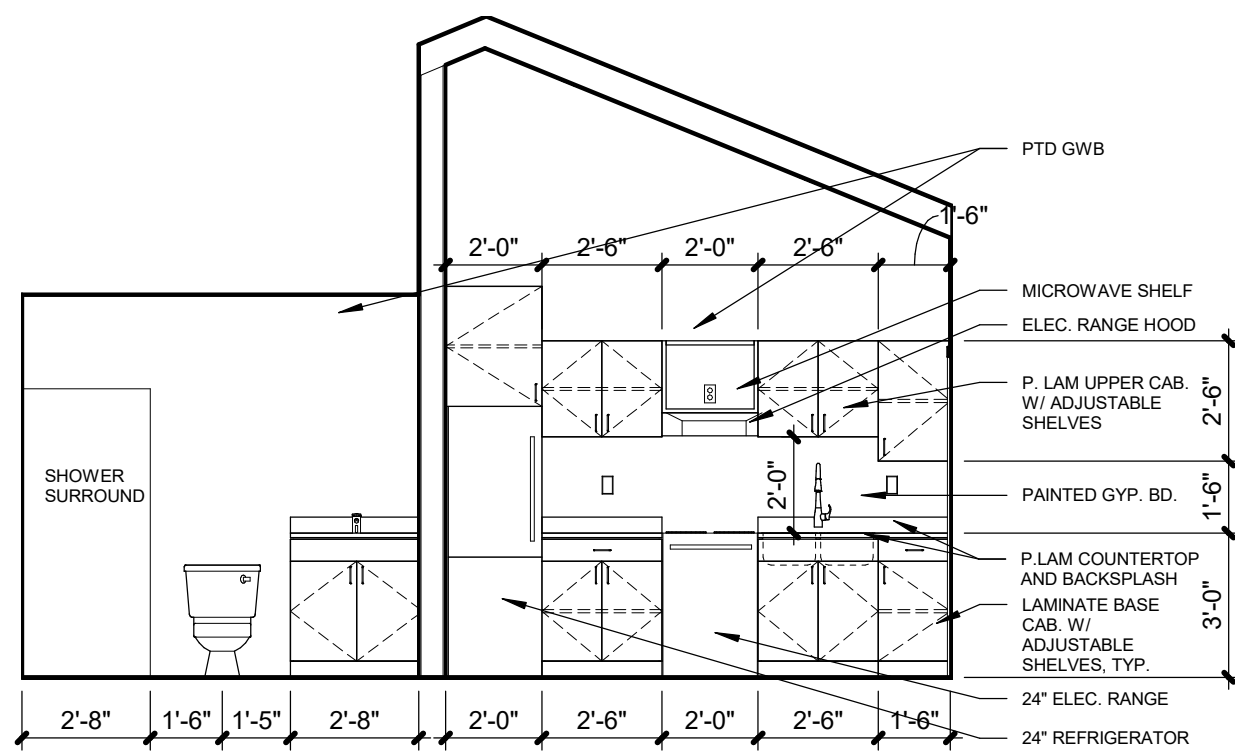
WEST ELEVATION - PULLER
SCALE : 1/4" = 1'-0"



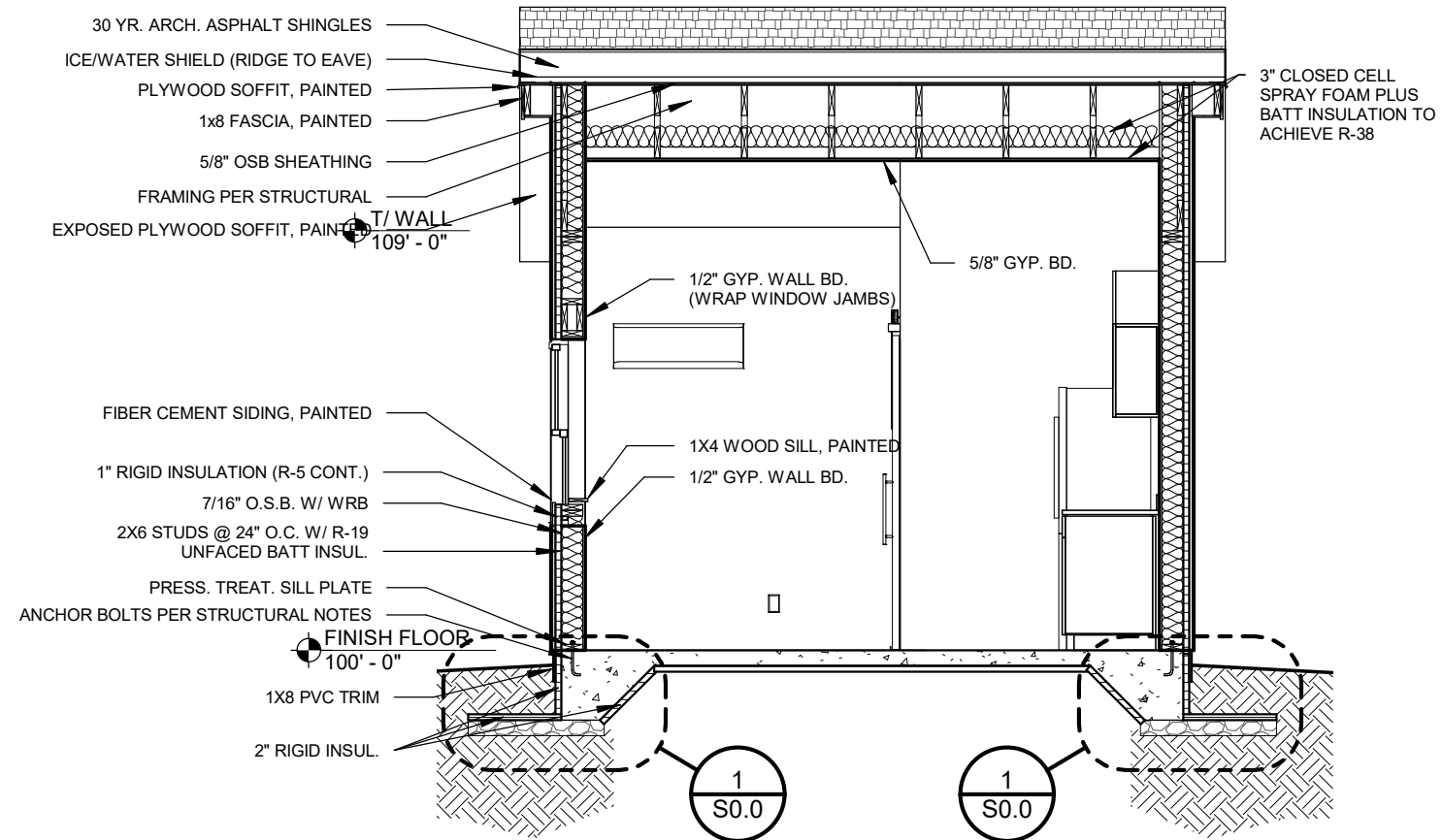
EAST ELEVATION - PULLER
SCALE : 1/4" = 1'-0"

T/W WALL
109' - 0"

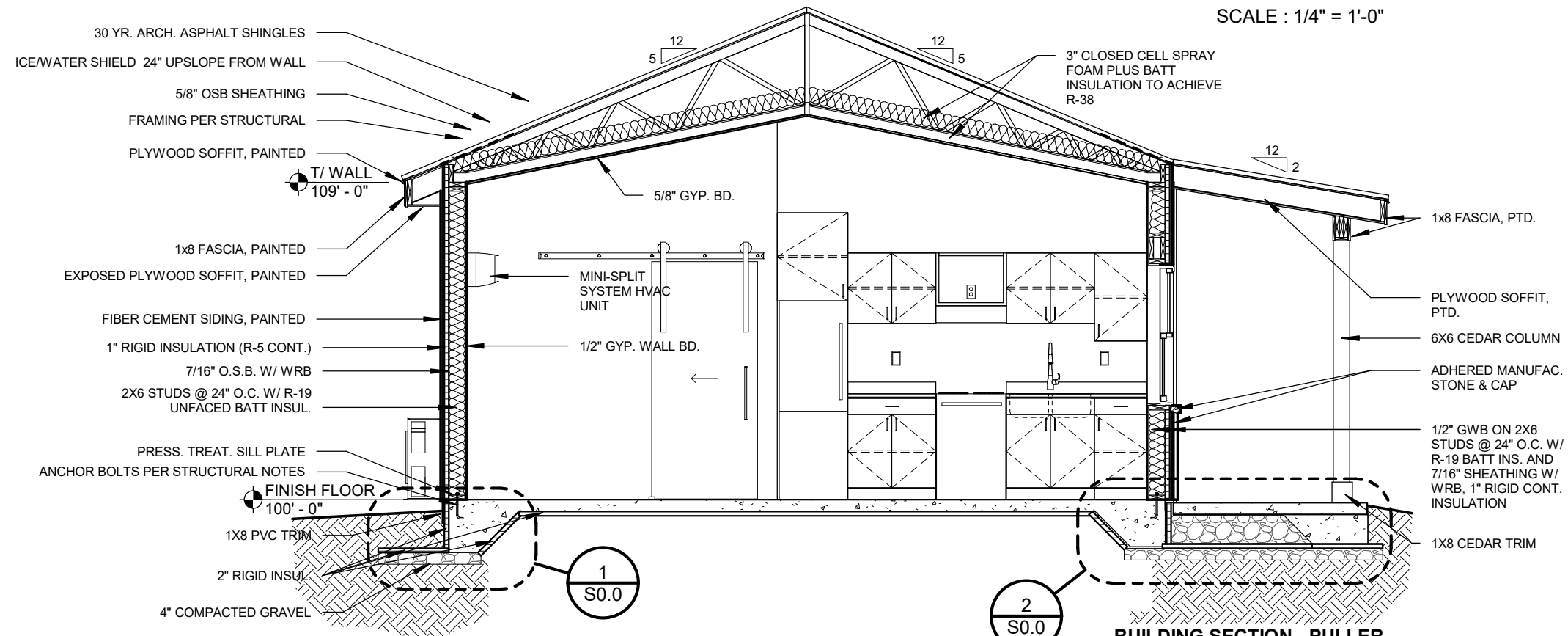
FINISH FLOOR
100' - 0"



BUILDING SECTION
SCALE : 1/4" = 1'-0"

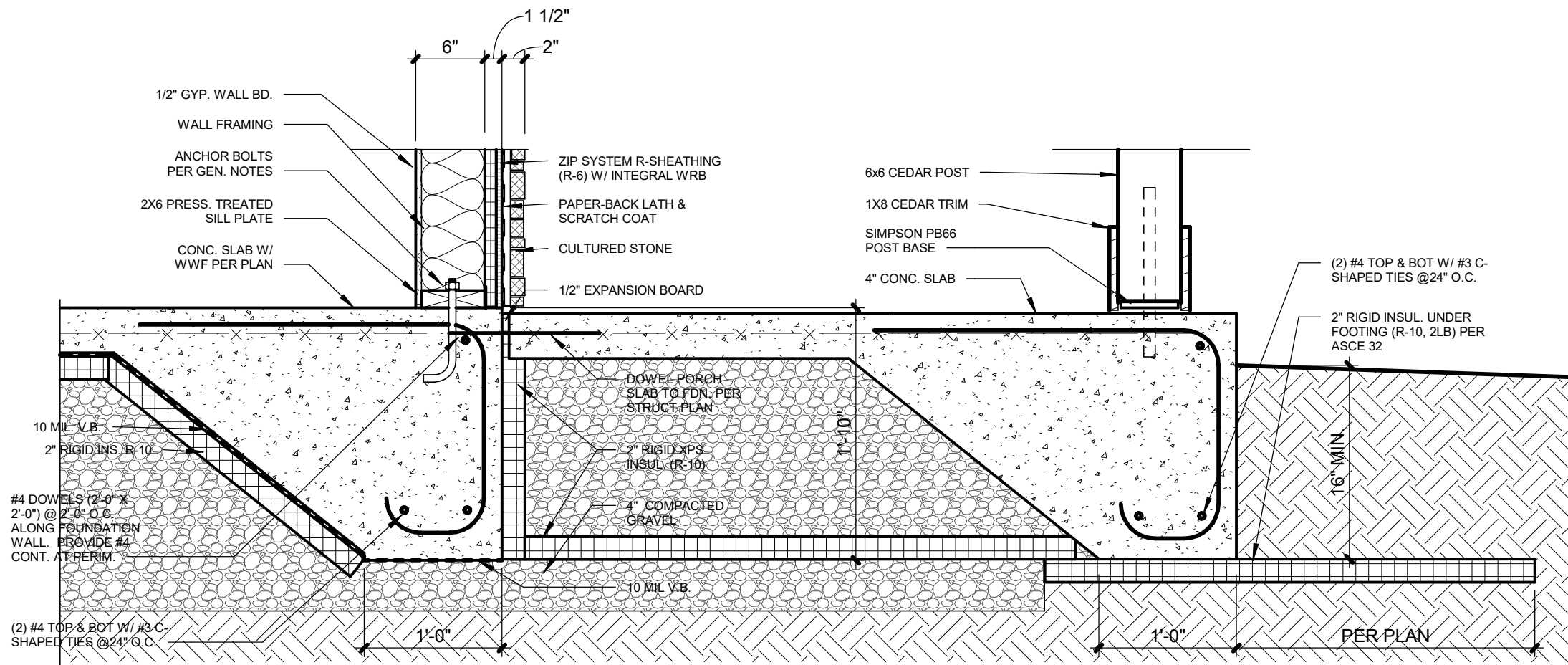


BUILDING SECTION - PULLER
SCALE : 1/4" = 1'-0"



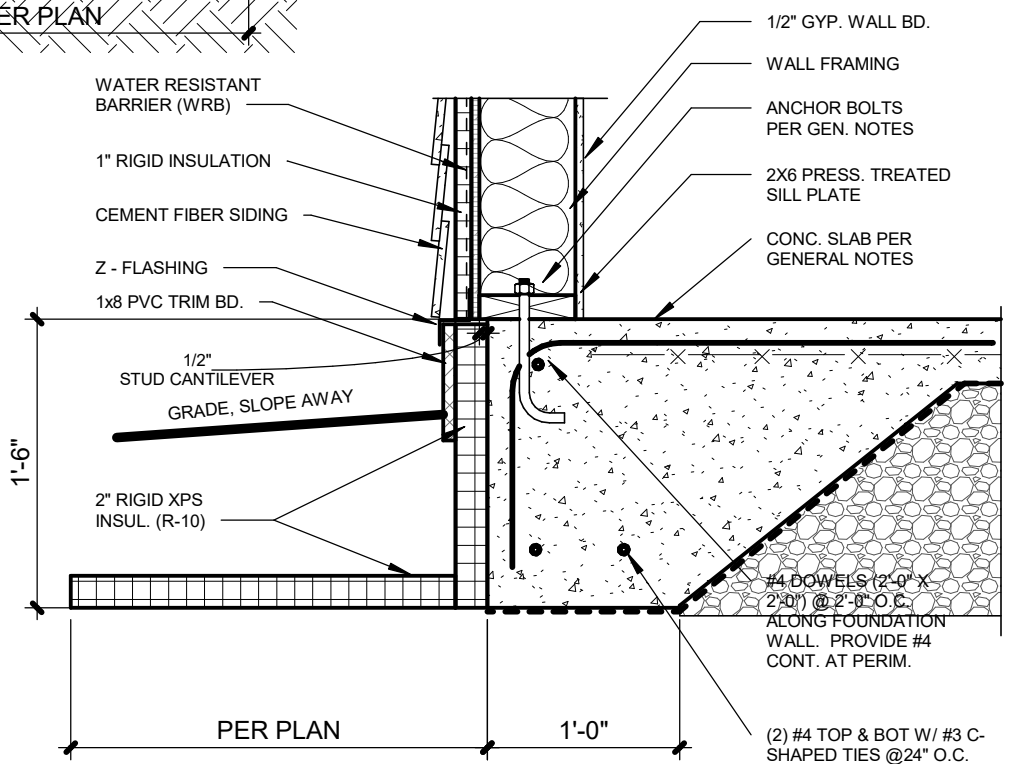
BUILDING SECTION - PULLER
SCALE : 1/4" = 1'-0"





2 FOUNDATION DETAIL FPSF PORCH

S0.0 SCALE : 1" = 1'-0"



1 FOUNDATION DETAIL FPSF

S0.0 SCALE : 1" = 1'-0"



FINKLE + WILLIAMS
ARCHITECTURE

VETERANS
COMMUNITY PROJECT

VCP - MILWAUKEE - INDIVIDUAL | 01.08.24 | 1" = 1'-0"



FINKLE + WILLIAMS © 2024

S0.0

STRUCTURAL

