



Business Grant Resources

Presented by: Ken Little

**Department of City Development
Commercial Corridor Team**

City Grant Programs



Signage Grant

50% up to \$2,500

Façade Grant

50% up to \$5,000



Whitebox Grant

50% up to \$25,000
\$10 per Square Foot



Retail Investment Fund

20% up to \$50,000
\$5,000 per Full Time Job
Creation



Signage Grant



- 50% of Eligible Expenses
- **Minimum** Project Cost = \$2,000.00
- **Maximum** = \$2,500.00
- Restrictions: Internally Lit Box Signs are not Eligible



Signage Grant



Eligible Signs

Channel Letter Sign

Awning Sign

Monument Sign



Signage Grant



Eligible Signs

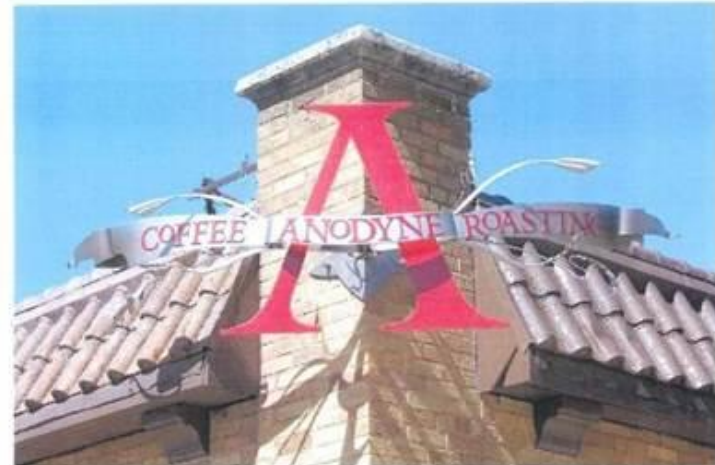
Neon Sign

Custom Sign

Hanging Sign



3D carved sign 4'x5' with metal arm installed
\$3,855.00



Signage Grant



Ineligible Signs: Internally Lit Box Signs (No Grants)



Signage Grant



Façade Grants



- 50% of Eligible Expenses
- **Minimum** Project Cost = \$2,000.00
- **Maximum** = up to **\$5,000** per storefront or public street facing facade
- Eligible expenses: Windows, Doors, Awnings, and Major Façade Alterations
- If part of a larger project: lighting, fencing, awnings and landscaping



Façade Grants



White Box Grants



- 50% of Eligible Expenses
- Limit of \$10 per square foot
- **Maximum** of \$25,000.00
- Eligible Expenses: Ceiling, Base Flooring, Rough Carpentry, Drywall, Electric, Plumbing, HVAC
- Restrictions: Cannot be combined with RIF Grant and must be an existing commercial space



White Box Grants



General Information



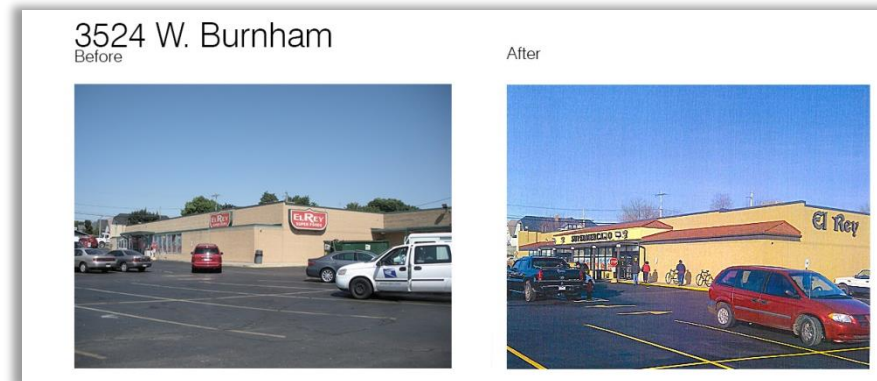
- All grants are **REIMBURSEMENTS***
- Any work on a project that starts before an application is approved **is not eligible for reimbursement**
- Applicants are encouraged to consult the Development Center on their projects

**The Commercial Foreclosure Renovation Fund is the exception as last money in*

Submission Requirements



- A completed application
- Lease / written consent from owner
- Documentation to illustrate visual impact of the proposed project
- *Two (2) competitive proposals*
- Site visit conducted by DCD to verify existing conditions
- Code violations and taxes checked by DCD
- W9 Form



Retail Investment Fund (RIF)



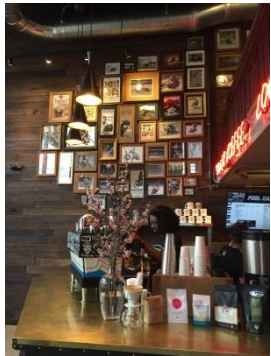
- 20% of Eligible Expenses
- For-Profit Retail projects in commercial corridors
- Applicant may OWN or LEASE
- Reimbursement program
- Eligible expenses: Buildout, Architecture, Engineering, Furniture, Fixtures and Equipment
- **\$5,000.00** per Full Time or Full-Time Equivalent up to a Maximum of **\$50,000.00**



Retail Investment Fund (RIF)



Before



Ineligible Properties



- Tax delinquent
- Code Violations
- Property in litigation, condemnation or receivership
- Property owned by religious groups
- Properties, on which taxes are being paid, but have nonprofit use
- Exclusively residential buildings

Ineligible Organizations & Businesses



- Non-profit agencies, entities or businesses
- Schools, day care centers
- Currency exchanges including check cashing agencies and some non-bank financial retail outlets
- Taverns, liquor stores
- Gun shops, pawnshops
- Cash for Gold businesses

Commercial Foreclosure Renovation Fund



- Up to 1/3 of Eligible Expenses
- For-Profit Retail projects in commercial corridors
- Building must be a commercial City owned tax-foreclosed property
- Last in money
- Maximum of **\$75,000.00**, not typically combined with other programs



5601 West Vliet Avenue (Wy'East Pizza)

**Additional restrictions and guidelines apply, contact CCT staff for additional details*

Commercial Foreclosure Renovation Fund



Additional Information Online



Applications and Guidelines are available online:

- Visit Milwaukee.Gov/DCD
- Click on Business Toolbox

Facade Hotline

414-286-8201

FacadeGrants@milwaukee.gov



Other Business Resources



- Financing
 - Milwaukee Economic Development Corporation
 - KIVA Milwaukee
 - Chambers of Commerce
 - Wisconsin Women's Business Initiative Corporation
 - Legacy Redevelopment Corporation
- Business Technical Assistance
 - Chambers of Commerce
 - BizStarts
 - Small Business Administration (SBA)
 - SCORE
 - Wisconsin Women's Business Initiative Corporation

