



MPS - NE Tower Window Condition

3360 N Sherman Boulevard Milwaukee, Wisconsin

Note: That while all windows in the towers were originally designed to be operable, some are no longer functional due to their current condition.



MPS - NE Tower Window Condition

3360 N Sherman Boulevard Milwaukee, Wisconsin

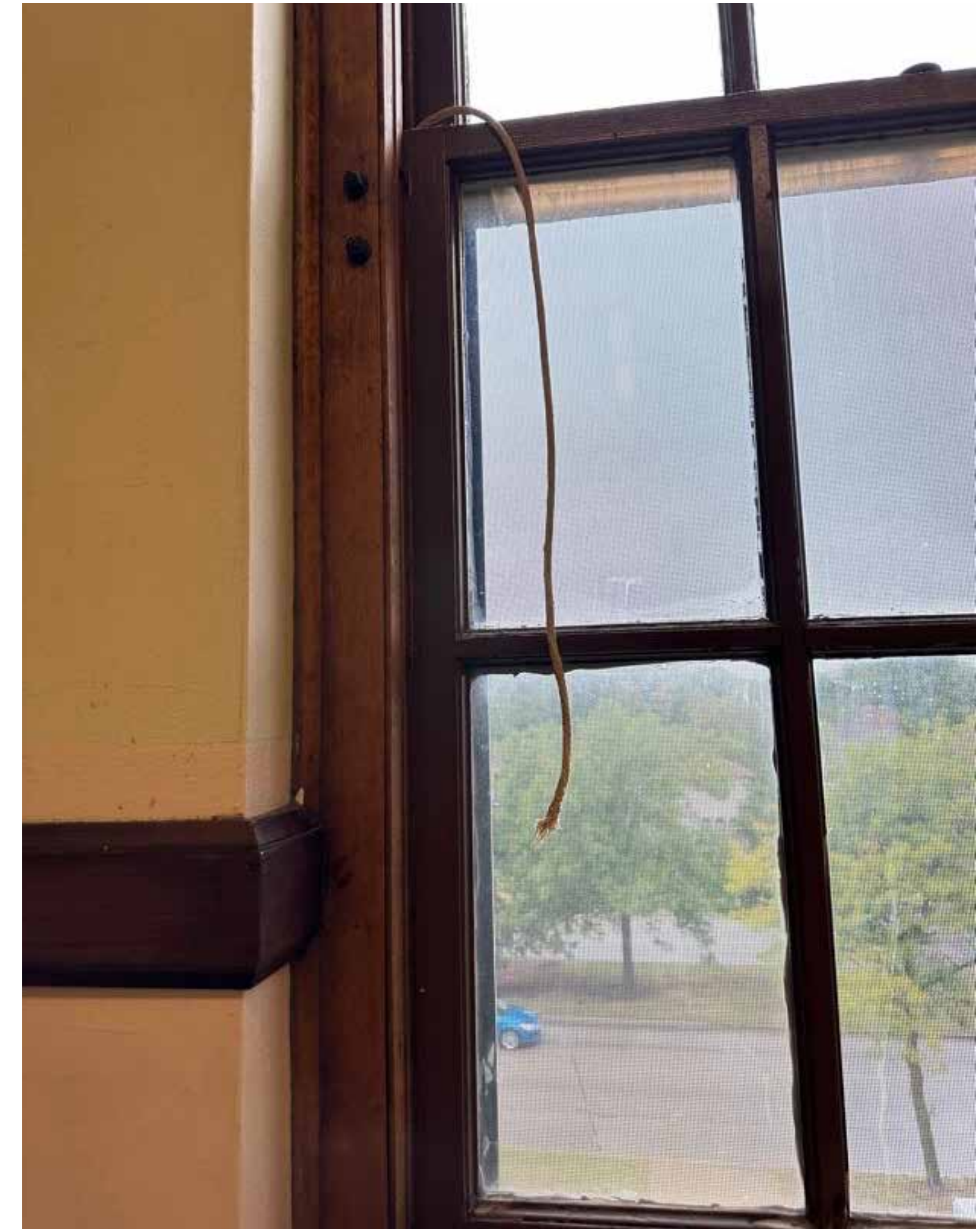
Note: That while all windows in the towers were originally designed to be operable, some are no longer functional due to their current condition.



MPS - NW Tower Window Condition

3360 N Sherman Boulevard Milwaukee, Wisconsin

Note: That while all windows in the towers were originally designed to be operable, some are no longer functional due to their current condition.



MPS - NW Tower Window Condition

3360 N Sherman Boulevard Milwaukee, Wisconsin

Note: That while all windows in the towers were originally designed to be operable, some are no longer functional due to their current condition.



MPS - SE Tower Window Condition

3360 N Sherman Boulevard Milwaukee, Wisconsin

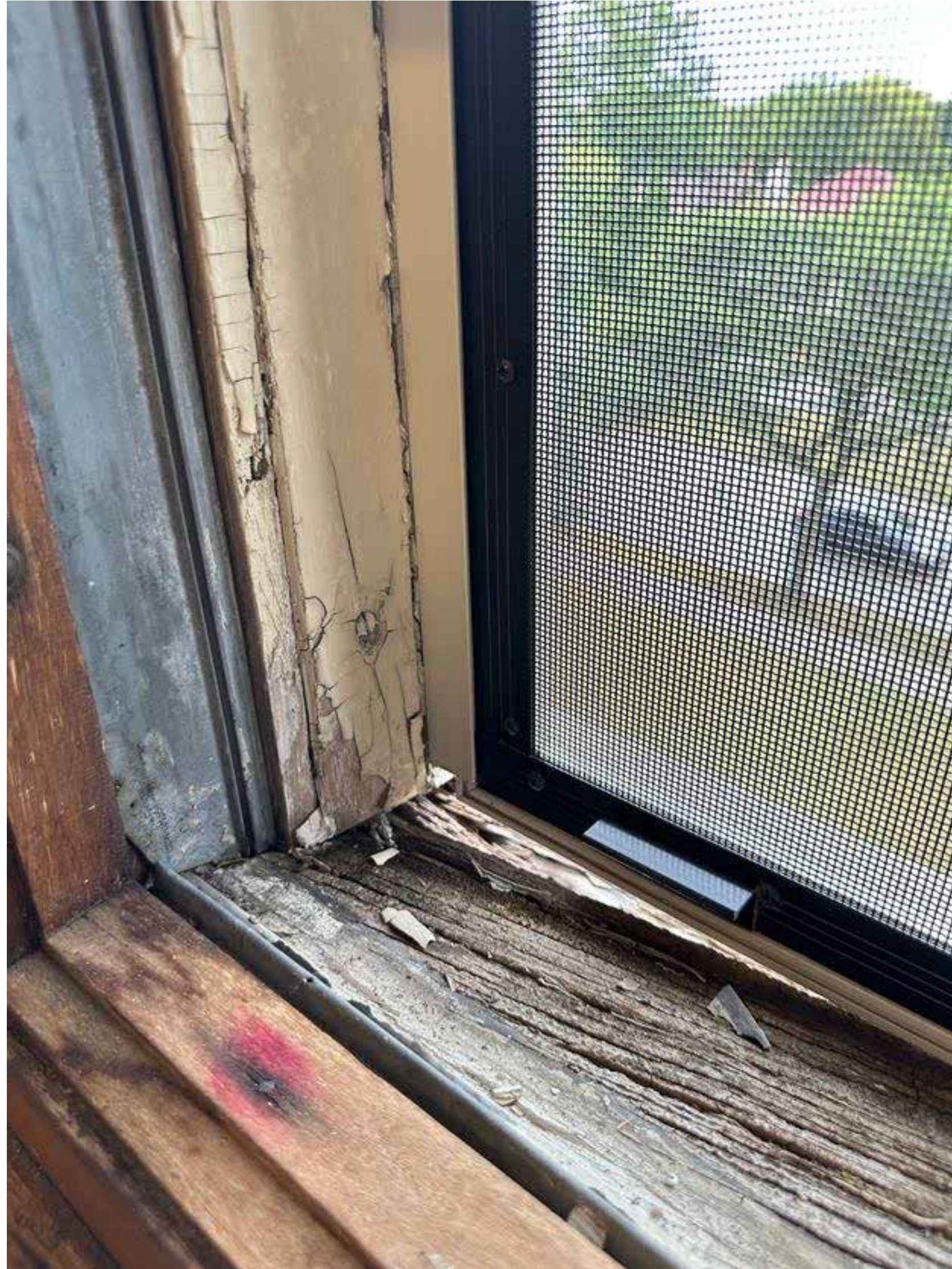
Note: That while all windows in the towers were originally designed to be operable, some are no longer functional due to their current condition.



MPS - SE Tower Window Condition

3360 N Sherman Boulevard Milwaukee, Wisconsin

Note: That while all windows in the towers were originally designed to be operable, some are no longer functional due to their current condition.



MPS - SW Tower Window Condition

3360 N Sherman Boulevard Milwaukee, Wisconsin

Note: That while all windows in the towers were originally designed to be operable, some are no longer functional due to their current condition.



MPS - SW Tower Window Condition

3360 N Sherman Boulevard Milwaukee, Wisconsin

Note: That while all windows in the towers were originally designed to be operable, some are no longer functional due to their current condition.