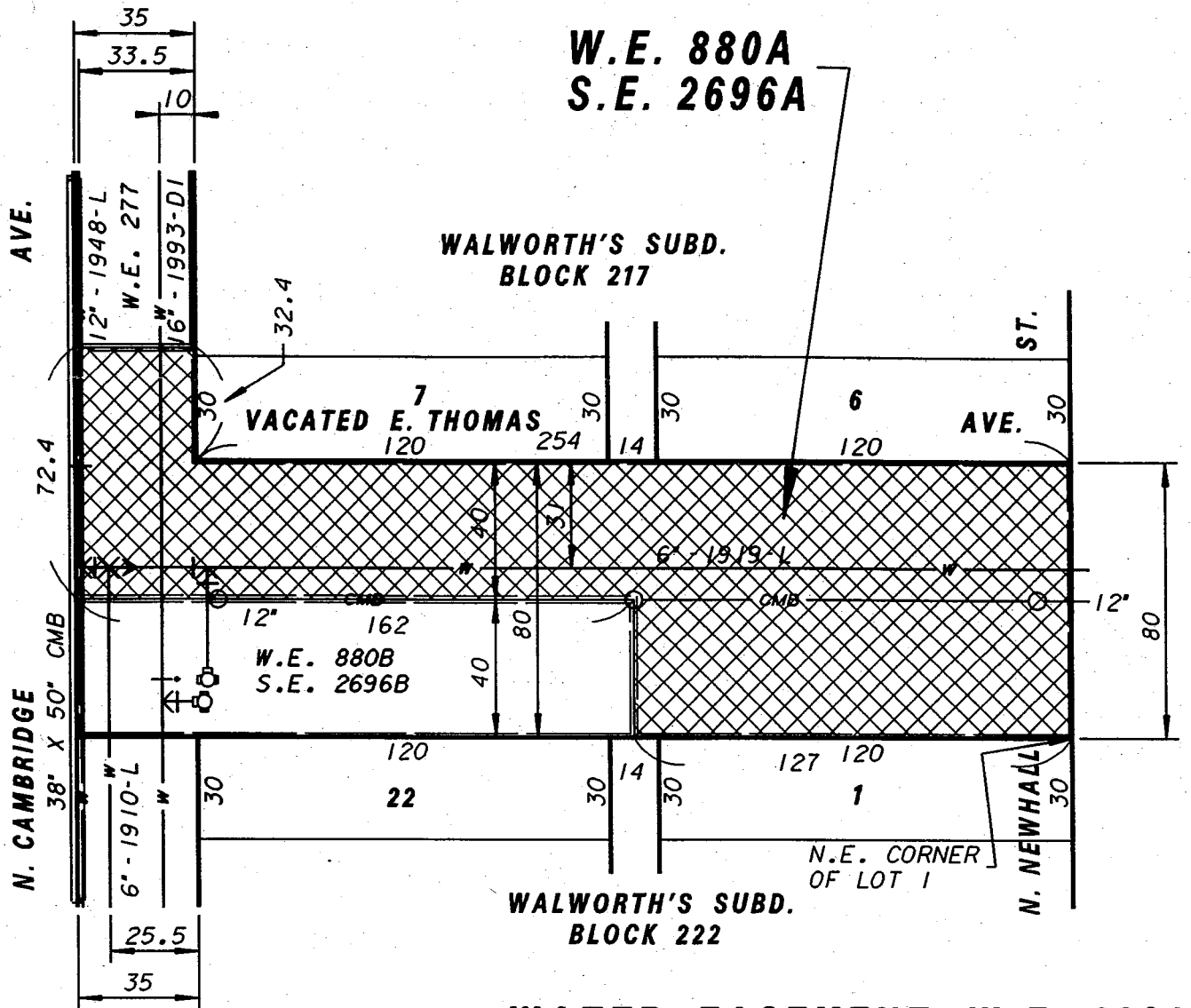


S.E. 1/4 OF SEC. 16, T.7N., R.22E.



WATER EASEMENT W.E. 880A  
SEWER EASEMENT S.E. 2696A



<b>Water Engineering</b> Department of Public Works Milwaukee, Wisconsin	
<b>WATER EASEMENT</b>	
<b>IN VACATED E. THOMAS AVE.</b> <b>FROM VACATED N. CAMBRIDGE AVE.</b> <b>TO N. NEWHALL ST.</b>	
SCALE 1" = 50' IN SEC. NO. 320 PLAN DATE 9/26/01 DRAWN BY PWP CHECKED BY PJG REVIEWED BY WORK ORDER 0232	APPROVED DATE <i>Mark J. Dyell</i> 11-1-01 MAINS DESIGN ENGINEER <i>Sarah B. Kent</i> 11-12-01 CHIEF DESIGN ENGINEER <i>Dale W. Myer</i> 11/12/01 SPECIAL DEPUTY COMMISSIONER OF PUBLIC WORKS
SHEET NO. 1 OF 1 PLAN FILE NO. <b>WE880A</b>	

MICROFILMED