

SE 17-7-22

ATLAS P. 322

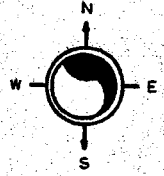
322 & 323

323-03

SW 17-7-22

ATLAS P. 323

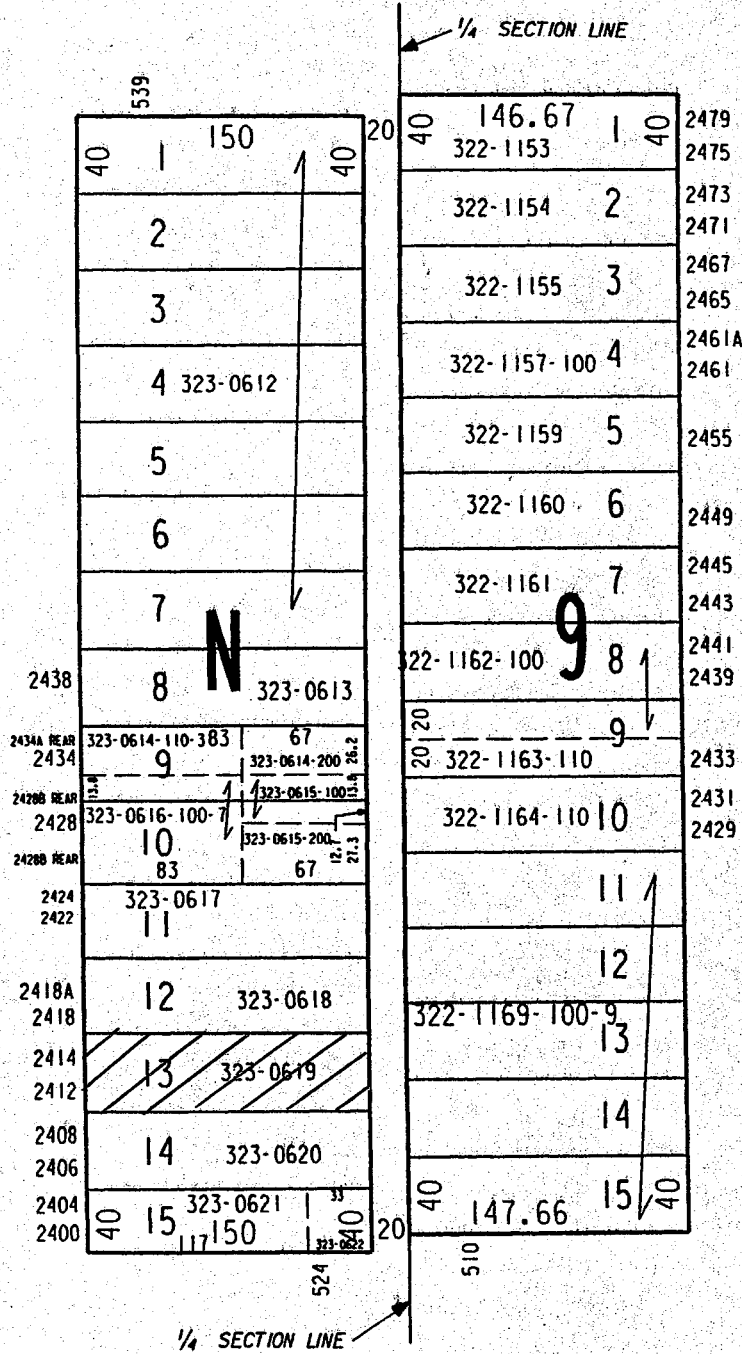
SCALE 1" = 80'



W WRIGHT ST

(LEE & PECKHAM'S SUBD.)
SUBDIVISION INTO CITY LOTS
OF THE EAST 40 ACRES ETC.

N 6TH ST



N 5TH ST

W. P. YOUNG'S SUBDIVISION

W MEINECKE AV