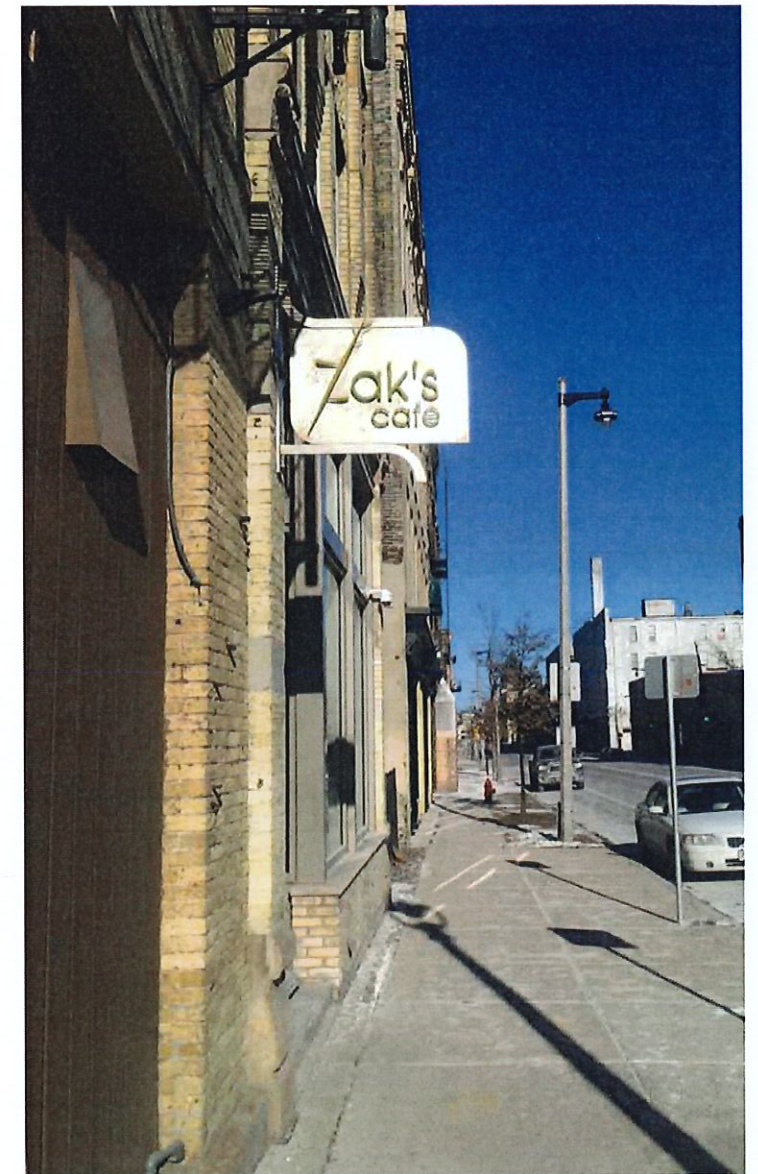


**WALL MOUNTED FLAG SIGN**

- ONE (1) DOUBLE SIDED FLAG SIGN - NON LIT
- 4" DEEP FABRICATED ALUMINUM SIGN BODY, PAINTED WHITE (SATIN FINISH)
- 2" ALUMINUM REVEALS ATTACHED TO 4" SQ. ALUMINUM SIGN ARM, PAINTED LIGHT ORANGE
- 12" X 12" X 1/2" MOUNTING PLATE, PAINTED WHITE
- GRAPHICS: 3M OPAQUE VINYL APPLIED TO 1st SURFACE
- ANCHOR MOUNTING PLATE TO BRICK WALL, (SURVEY REQ'D. DETERMINE FASTENERS)



Remove Existing "Zak's" Sign

**FIELD SURVEY REQUIRED PRIOR TO INSTALLATION**

- BUILDING DIMENSIONS TO BE FIELD VERIFIED TO DETERMINE SIGN PLACEMENT.



4085 North 128th Street, Brookfield, WI 53005  
 p. 262.781.1500  
 f. 262.781.1540  
 www.lembergelectric.com

PROJECT:  
**Toast**  
 ADDRESS:  
**231 S. 2nd Street, Milwaukee, WI**

DRAWING:	1(2)	REVISION DATE:	01-15-18	REVISION#:	(1)
DATE:	01-05-18	SALES REP:	Skip DeBack		
SCALE:	1/2" = 1'	DESIGNER:	Mark Mayzik		

LANDLORD APPROVAL SIGNATURE / DATE:  
 CLIENT APPROVAL SIGNATURE / DATE:

PAGE #:

1 OF 3



East elevation. Zak's sign to be removed and replaced



West elevation. No signage to be mounted here