

Dineen Park



Copernicus Park

Neighborhood Flood Mitigation Projects

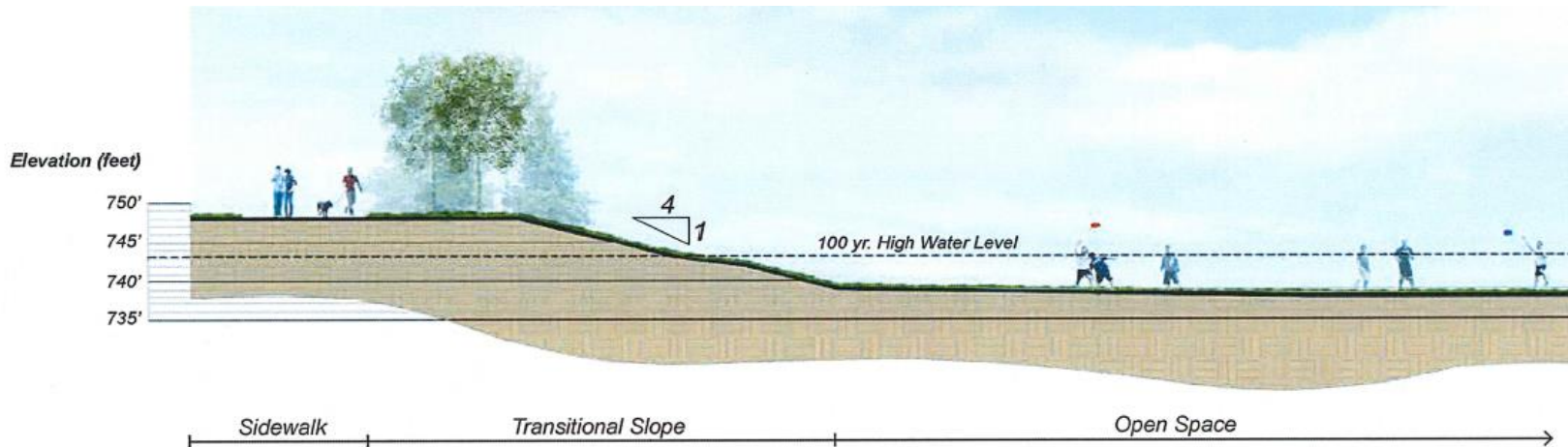
Existing Conditions – Copernicus Park

- Area has a history of repeated surface flooding and basement back-ups during heavy storm events
 - Historical events of 2008, 2009, and 2010
- Topography results in surface flooding through residential properties at the intersection of S. 20th St. and W. Klein Ave.
- 3 houses (5664, 5674 and 5710 S. 20th St.) have been demolished to diminish flooding concerns



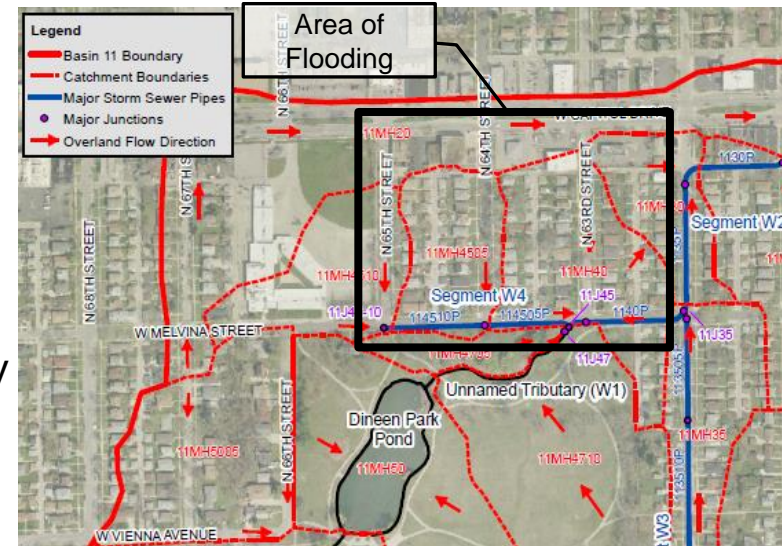
Design of Storm Water Improvements – Copernicus Park

- Construct a 1.5 acre dry pond capable of detaining the 100-Year storm event in Copernicus Park.
- Located in non-programmed open grass areas.
- Re-route existing storm sewers into the proposed detention pond.
- Facility is incorporated into the park and becomes programmable space to promote park activities.



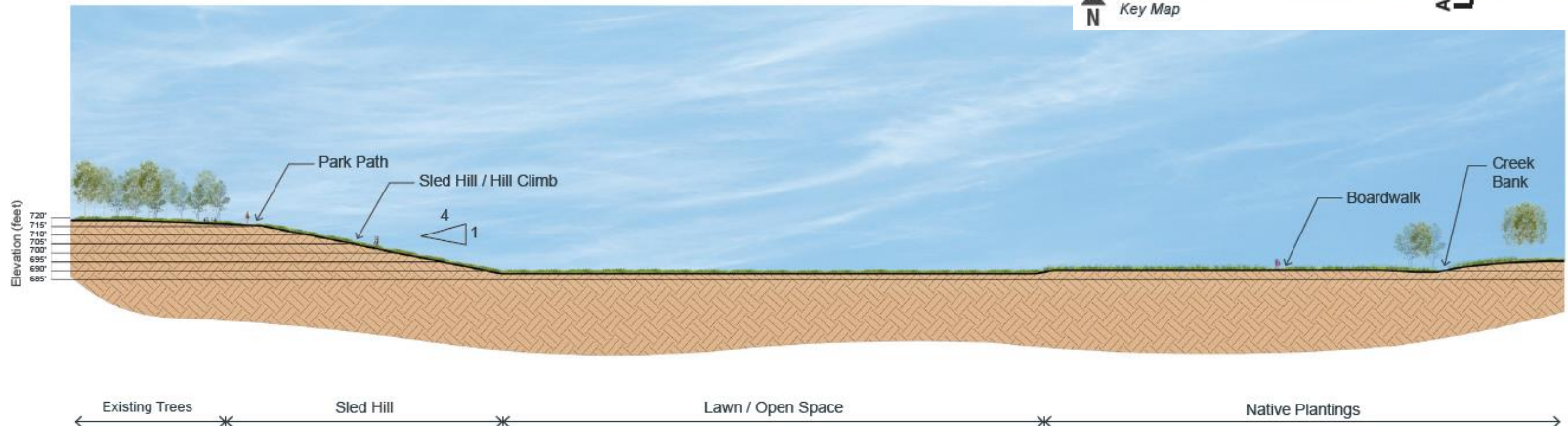
Existing Conditions – Dineen Park

- Area has repeated surface flooding and basement back-ups during heavy storm events.
 - Historical events of 2008, 2009, and 2010
- Topography results in surface flooding through residential and commercial properties from lack of an overland flow path.
- 2013 Dineen Park Neighborhood Stormwater Study investigated and analyzed causes of and solutions to area flooding.



Design of Storm Water Improvements – Dineen Park

- Construct a 8.75 acre dry pond capable of detaining the 25-Year storm event in Dineen Park
 - Located in non-programmed open grass areas
- Facility is incorporated into the Master Plan and will be programmable space to promote park activities



Section A-A

*Estimated drain down time for the stormwater management facilities is 24 to 48 hours.

Dineen Park



Copernicus Park

Neighborhood Flood Mitigation Projects