



# Certificate of Appropriateness

Milwaukee Historic Preservation Commission/841 N Broadway/Milwaukee, WI 53202/phone 414-286-5722

## Property Description of work

### **3330 W. Kilbourn Ave., Concordia Historic District**

Replace the steps going from the parking pad to the back door in concrete with metal railings. Grade area between rear of the building and garage to level and remove stumps. Install permeable pavers over compacted base..

## Date issued 6/14/23

In accordance with the provisions of Section 320-21 (11) and (12) of the Milwaukee Code of Ordinances, the Milwaukee Historic Preservation Commission has issued a certificate of appropriateness for the work listed above. The work was found to be consistent with preservation guidelines. The following conditions apply to this certificate of appropriateness:

**All parts of the stairs shall comply with city building codes.**

All work must be done in a craftsman-like manner, and must be completed within one year of the date this certificate was issued. Staff must approve any changes or additions to this certificate before work begins. Work that is not completed in accordance with this certificate may be subject to correction orders or citations. If you require technical assistance, please contact Historic Preservation staff as follows: Phone: (414) 286-5722 E-mail: [hpc@milwaukee.gov](mailto:hpc@milwaukee.gov).

If permits are required, you are responsible for obtaining them from the Milwaukee Development Center. If you have questions about permit requirements, please consult the Development Center's web site, [www.milwaukee.gov/lms](http://www.milwaukee.gov/lms), or call (414) 286-8210.

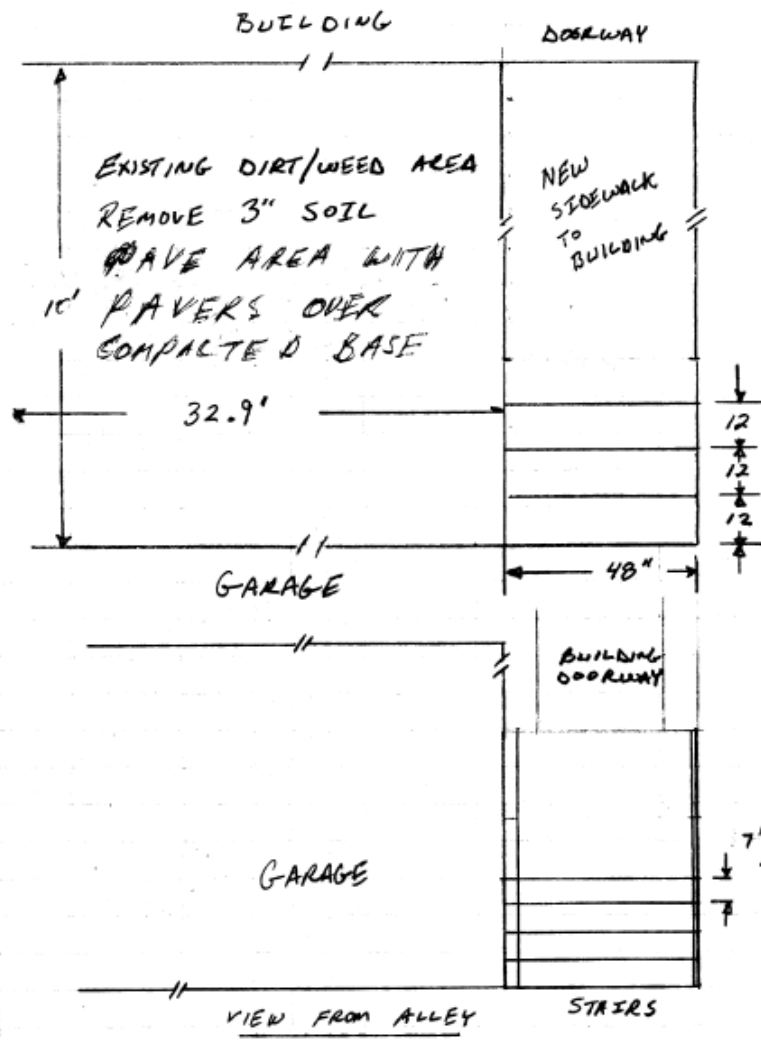
City of Milwaukee Historic Preservation

Copies to: Development Center, Ald. Bauman



Existing conditions

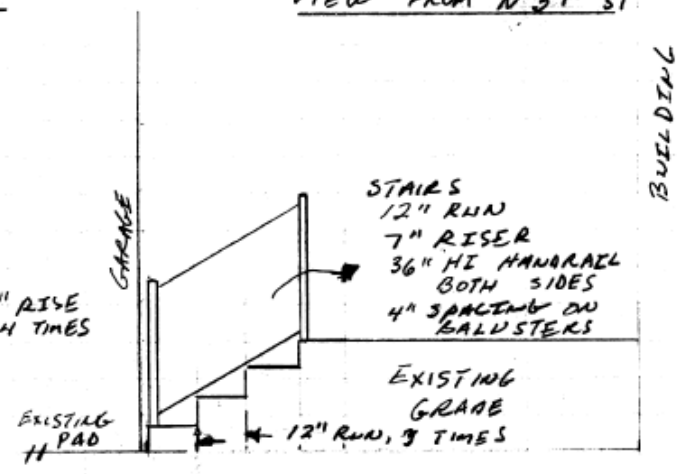




DIMENSIONS IN INCHES  
1" = 36"

- STAIR RAILING IS POWDERED COATED ALUMINUM, BLACK
- STAIRS AND SIDEWALK ARE POURED IN PLACE CONCRETE

VIEW FROM N 34<sup>TH</sup> ST



3330 W. KILBOURN AVE

Replacement stairs and landscaping plan