



Milwaukee's Community Health Improvement Plan

Overview of Racial and Health Equity Goals

Presentation to Board of Health
January 8th, 2025

MKE Elevate Overview

THE CITY OF MKE HEALTH DEPARTMENT'S COMMUNITY HEALTH IMPROVEMENT PLAN (CHIP)



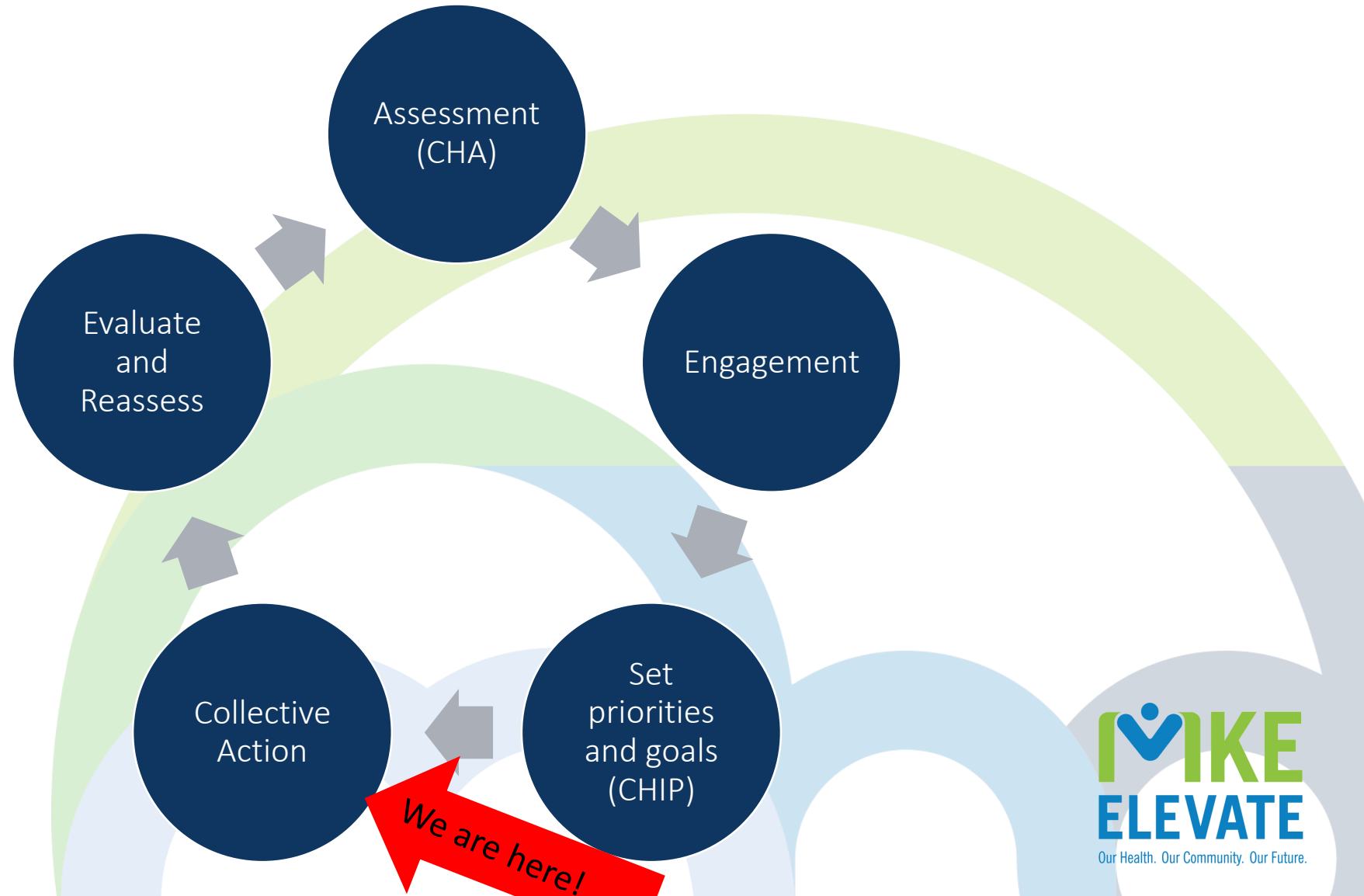
- Milwaukee's community health improvement planning process, updated every 5 years to respond to priority issues selected by our community
- Seeks to align and advance shared strategies through coordinated collective action
- Convened by the City of Milwaukee Health Department, supported by Mayor and Board of Health
- **MKE Elevate Vision:** A Milwaukee where all people are thriving in safe, healthy, and equitable neighborhoods.



MKE Elevate Overview

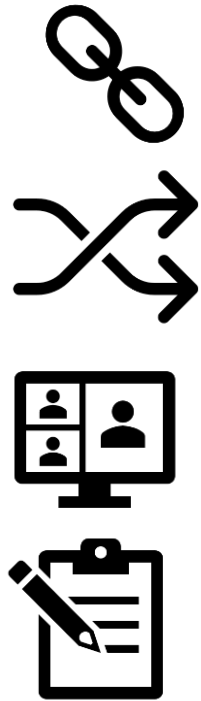
THE CITY OF MKE HEALTH DEPARTMENT'S COMMUNITY HEALTH IMPROVEMENT PLAN (CHIP)

Cyclical
process
repeated
every 5 years



MKE Elevate Overview

ROLE OF THE HEALTH DEPARTMENT



Convene	Community partners to share data, identify priorities, and implement strategies
Align	Existing plans and strategies
Facilitate	Steering Committee, Action Teams, and Work Groups
Track	Progress, metrics, outcomes and publish Community Health Assessment (CHA)

2023-2028 RACIAL AND HEALTH EQUITY PRIORITIES

1. Increase Household Income
2. Raise Life Expectancy and Quality of Life
3. Increase Civic Engagement and Knowledge

Overarching Priority: Racism and Health Equity

- 1: Increase household income of Black, Hispanic / Latinx, and American Indian/Alaska Native Milwaukee residents
- 2: Raise the life expectancy and quality of life for Black and American Indian/Alaska Native Milwaukee residents
- 3: Increase Civic Engagement and knowledge for Milwaukeeans to participate in local and state level voting



RACISM & HEALTH EQUITY

OVERARCHING PRIORITY

- "Racism is a public health crisis."
Milwaukee Declaration, 2019
- Milwaukee residents of color experience some of the most significant racial disparities when it comes to health, including **birth outcomes, childhood lead poisoning, STIs, asthma, hypertension, and other chronic conditions.**

**racism is a
public health
crisis**

150 APHA
YEARS

RACISM & HEALTH EQUITY

OVERARCHING PRIORITY

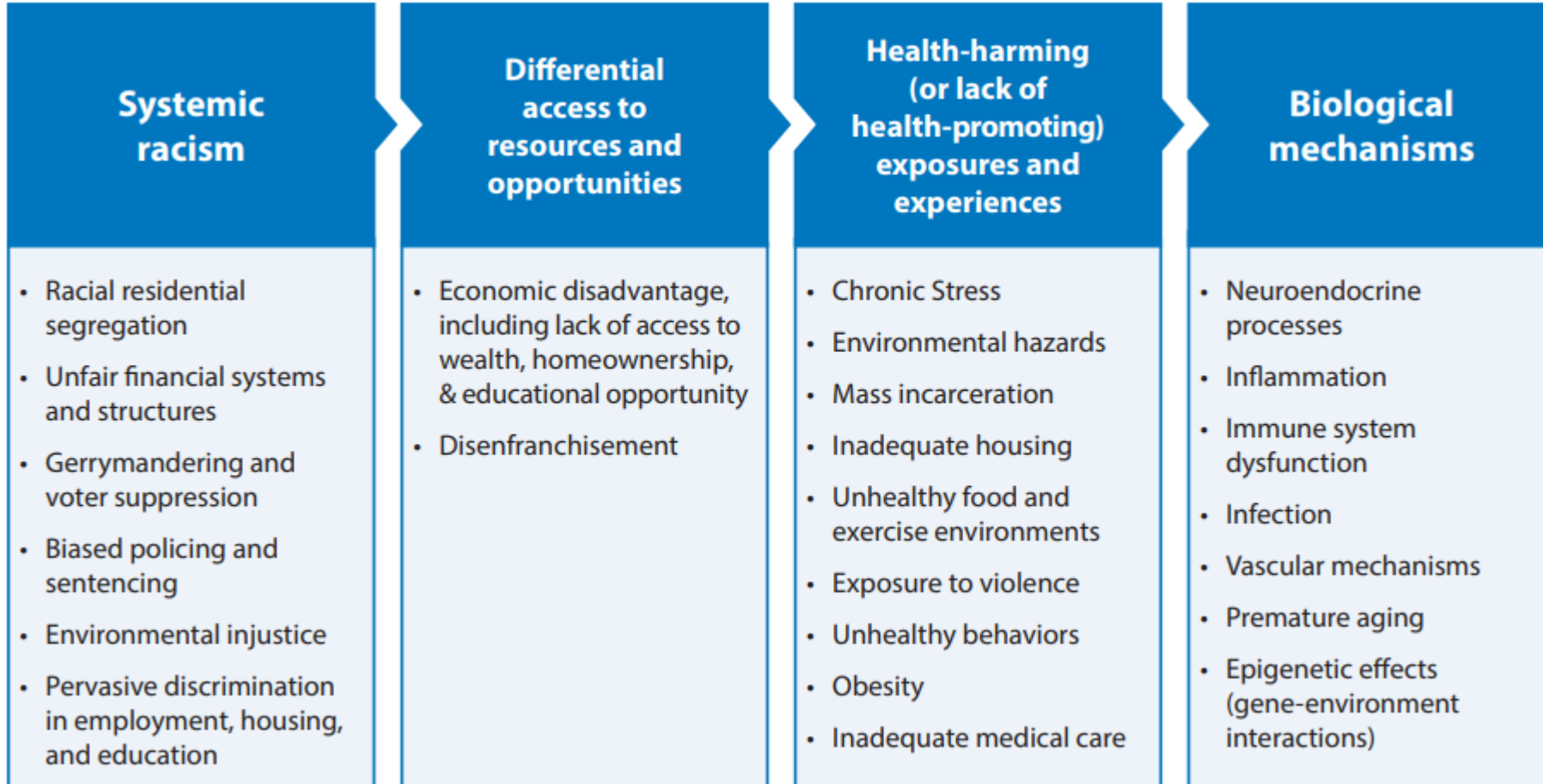


*"Racism is a **system of structuring opportunity** and assigning value based on the social interpretation of how one looks (which is what we call "race"), that **unfairly disadvantages** some individuals and communities, **unfairly advantages** other individuals and communities, and **saps the strength of the whole society** through the waste of human resources."*

-- APHA Past-President Camara Phyllis Jones, MD, MPH, PhD

RACISM & HEALTH EQUITY

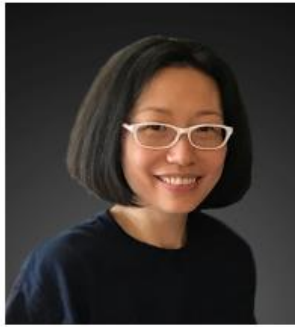
OVERARCHING PRIORITY



2023-28 MKE Elevate Steering Committee



Byron Marshall, Jr
Community Huddle



Xiaobei Dong
UWM Zilber School of Public Health



Susan Hjelsand
American Heart Association



Rick Banks
Milwaukee County Office of Equity



Lindsey O'Connor
Milwaukee Health Department - Human Resources



Karin Tyler
City of Milwaukee - Office of Community Wellness and Safety



Rosamaria Martinez
Milwaukee Health Department - Maternal and Child Health



Benjamin Porter
Greater Milwaukee Foundation



Mary Homan
Medical College of Wisconsin



David Frazer
Center for Urban Population Health



Radaya Ellis
Milwaukee Community Resident



Ann Christiansen
Milwaukee Health Care Partnership



Caroline Gomez-Tom
Milwaukee Health Department - Board of Health President



Demonte Dismuke
Kinship Community Food Center

No picture available

Deja Taylor
Ubuntu Research and Evaluation
Pamela Williams
City of Milwaukee Assessor's Office
City of Milwaukee Racial Equity Initiative



Racism and Health Equity



Alexandria Kohn

Public Health Strategist
Akohn@milwaukee.gov



Anneke Mohr

Public Health Strategist
Amohr@milwaukee.gov



Household Income Data



Household Income

From 2017 to 2021, the **median household income** for Black residents in Milwaukee was **\$31,959**, while for Hispanic/Latino residents it was **\$43,897** and for American Indian/Alaskan Native residents it was **\$49,073**. In comparison, non-Hispanic White residents had a median household income of **\$61,182**.⁸

Source:

- City of Milwaukee Office of Equity and Inclusion, Median Household income in past 12 months. <https://experience.arcgis.com/experience/b030fad9229348739eae3178451b0651/page/Income-%26-Wages/>

Household Income

Goal 1: Increase Household Income of Black, Hispanic/Latinx, and American Indian/Alaska Native Residents in Milwaukee

Objective	Strategy	Partners
1.2 Increase economic support for basic needs	<ul style="list-style-type: none">• Explore Implementing a Guaranteed Income Program	<ul style="list-style-type: none">• MKE Elevate Steering Committee• Vital Strategies• Zilber Family Foundation

Household Income

2024-25 SMARTIE inputs/deliverables

Input Activities	Deliverable
<p>Educational Activities</p> <ul style="list-style-type: none"> • Host a movie screening of "It's Basic" • Create an educational brief <p>Increasing Partners</p> <ul style="list-style-type: none"> • Meet with 4 community leaders • Create power map to understand the landscape 	<p>Short term</p> <ul style="list-style-type: none"> • Attendance of at least 30 people at 'It's Basic' screening in partnership with Zilber family Foundation • Plain Language/Language accessible Educational Brief <p>Long Term</p> <ul style="list-style-type: none"> • At least 8 community leaders support GI • Increase economic security for Black and American Indian/ Alaskan Native in Milwaukee

Household Income: How to get involved

- Connect us to new partners
- Share the GI brief with your networks
- Share the importance of GI within your networks

Life Expectancy Data



Life Expectancy

From 2018-2020, **life expectancy for Black residents** living in Milwaukee County was just **70 years old** and for American Indian/Alaskan Native residents it was **74 years old**, compared to non-Hispanic White residents at **77.9 years**.⁹ These disparities were exacerbated with the onset of COVID-19. **Black residents comprise 26% of Milwaukee County's population, yet 52% of COVID-19 related deaths** occurred among Black residents.¹⁰

Source:

- County Health Rankings & Roadmaps, 2018-2020. <https://www.countyhealthrankings.org/>
- Milwaukee County. Milwaukee County Passes Ordinance to Advance Racial Equity and Improve Health Outcomes. 2020. <https://county.milwaukee.gov/EN/County-Executive/News/Press-Releases/Milwaukee-County-Passes-Ordinance-to-Achieve-Racial-Equity-and-Improve-Health-Outcomes>

Life Expectancy

Goal 2: Raise the Life Expectancy and Quality of Life for Black and American Indian/Alaskan Native Milwaukee Residents

Objective	Strategy	Partners
2.1 Increase understanding of key drivers of life expectancy	<ul style="list-style-type: none">• Conduct research to understand the key drivers of the life expectancy among Black and American Indian/Alaska Natives living in Milwaukee	<ul style="list-style-type: none">• MKE Elevate Steering Committee• CUPH• MHCP• DYCU (<i>meeting scheduled</i>)

Life Expectancy

2024-25 SMARTIE inputs/deliverables

Input Activities	Deliverable
<ul style="list-style-type: none">• Publish research brief• Meet with 4 organizations• Organize 2 focus groups	<p>Short Term</p> <ul style="list-style-type: none">• Completion of research brief that shows the key drivers of the difference in life expectancy among different demographics in Milwaukee <p>Long Term</p> <ul style="list-style-type: none">• Work with partners addressing the key drivers of life expectancy of Black and American Indian/ Alaskan Native Milwaukee Community members• Increase life expectancy among Black and American Indian/Alaskan Native Milwaukee Community Members

Life Expectancy: How to get involved

- Connect us to organizations working on advancing life expectancy for African American and AI/AN communities
- Help us gather participants for focus groups
- Review the life expectancy brief

Civic Engagement Data



Civic Engagement

In 2022, **the voter registration rate** among adults living in Milwaukee stood at **68%**, reflecting a decline of 4% compared to the 2018 election and a 9% decrease compared to the 2014 election.¹¹

Source:

- Milwaukee Turnout Trends, John D Johnson. 2023. https://law.marquette.edu/assets/community/lubar/posts/MilwaukeeVoterTurnout_3-9-2023.html

Civic Engagement

Goal 3: Increase civic engagement and knowledge for Milwaukeeans to participate in local and state level voting

Objective	Strategy	Partners
3.1 Increase voting and voter registration	<ul style="list-style-type: none">• Improve understanding and track structural barriers that hinder community members from registering to vote	<ul style="list-style-type: none">• MKE Elevate Steering Committee• UWM Center for 21st Century Studies• COA Goldin

Civic Engagement

2024-25 SMARTIE inputs/deliverables

Input Activities	Deliverable
<p>Solidify Partnerships</p> <ul style="list-style-type: none"> • Monthly work group meetings featuring a partner presentation • Outreach for new implementation partners • 8 partner meetings to build relationships • Partner with 3 organizations in priority zip codes and communities most impacted to host voter registration events • 3-5 partnerships working in 3-5 priority wards/zip codes <p>Understanding barriers</p> <ul style="list-style-type: none"> • Host at least 1 C21 partnership exhibit that is accessible to all community members • Summarize barriers identified in C21 stories • Capture community narrative on barriers to vote by hosting 3 tabling events with an opportunity for community members to share their stories • Complete lit review of current research on civic health • Exhibits could include voter registration 	<p>Short Term</p> <ul style="list-style-type: none"> • Summary document of barriers • Identify strategies to address barriers <p>Long Term</p> <ul style="list-style-type: none"> • Increase voter registration in 3-5 priority wards/zip codes • Increase voter turnout in 3-5 priority wards/zip codes

Civic Engagement: How to Get Involved

- Join the Civic Engagement monthly work group
- Connect us to new partners working on voter registration or civic engagement
- Help with planning a second 'Trust the Vote' exhibit

Get involved!



Visit milwaukee.gov/elevate to join our email list



Email mkeelevate@milwaukee.gov for more info



Follow us on social media [@MKEelevate](https://twitter.com/MKEelevate)



Join an action team or attend a general member meeting