

PROPOSED SCHEMATIC
 DRAWINGS FOR:

**ADMIRAL'S
 WHARF**

234 S WATER ST
 MILWAUKEE, WI

FILE NUMBER: 190784

DATE	REV	ISSUE

DRAWINGS AND SPECIFICATIONS AS INSTRUMENTS OF SERVICE ARE THE PROPERTY OF VJS CONSTRUCTION SERVICES. THE ARCHITECT/ENGINEER ASSUMES NO RESPONSIBILITY OR LIABILITY FOR THE USE OF THESE PLANS FOR ANY PROJECT OTHER THAN SPECIFICALLY AUTHORIZED BY THEM AND SIGNED AND SEALED FOR SUCH SPECIFIC LOCATION IN THE STATE, PROVINCE, OR TERRITORY SHOWN ON THE SEAL.

PROJECT NUMBER 1170764
 DATE 11/19/2019
 DRAWN BY BDG
 CHECKED BY KAK
 SCALE 3/32" = 1'-0"

EXTERIOR
 ELEVATIONS

A4.01



- ROOF SCREENING TO MATCH SLATE GRAY METAL PANEL.
- PAC-CLAD HIGHLINE C1 METAL WALL PANEL, INTERSTATE BLUE, TYP.
- CLEAR ANODIZED ALUMINUM STOREFRONT WINDOW SYSTEM, TYP.
- BLACK GUARD RAIL WITH GLASS INFILL PANEL, TYP.
- PAC-CLAD HIGHLINE S1 METAL WALL PANEL, MUSKET GRAY, TYP.
- PAC-CLAD HIGHLINE S1 METAL WALL PANEL, SLATE GRAY, TYP.
- PAC-CLAD HWP 12" METAL WALL PANEL, SILVERSMITH, TYP.
- MASONRY: EDEN VALDERS EXTERIOR PANELS, DOVEWHITE, OR APPROVED EQUAL, TYP.
- BLACK GUARD RAIL WITH STAINLESS STEEL CABLE DIVIDERS, TYP.
- PELLA IMPERVIA CASEMENT AND AWNING WINDOWS, BLACK, TYP.
- PELLA IMPERVIA SLIDING PATIO DOOR AND TRANSOM WINDOW, BLACK, TYP.
- BLACK GUARD RAIL WITH GLASS INFILL PANEL, TYP.
- ALPOLIC METAL COMPOSITE PANEL, PIGMENTO ZINC, COLOR SHALL BE GZZ GREY, TYP.
- PREFINISHED ALUMINUM SUNSHADE CANOPY, TYP.
- CLEAR ANODIZED ALUMINUM STOREFRONT WINDOW SYSTEM, TYP.
- MASONRY: EDEN VALDERS EXTERIOR PANELS, DOVEWHITE, OR APPROVED EQUAL, TYP.
- MECHANICAL GRILLES: PAINT TO MATCH SURROUNDING MASONRY, TYP.

① WEST ELEVATION
 3/32" = 1'-0"

PROPOSED SCHEMATIC
 DRAWINGS FOR:

ADMIRAL'S WHARF

234 S WATER ST
 MILWAUKEE, WI

FILE NUMBER: 190784

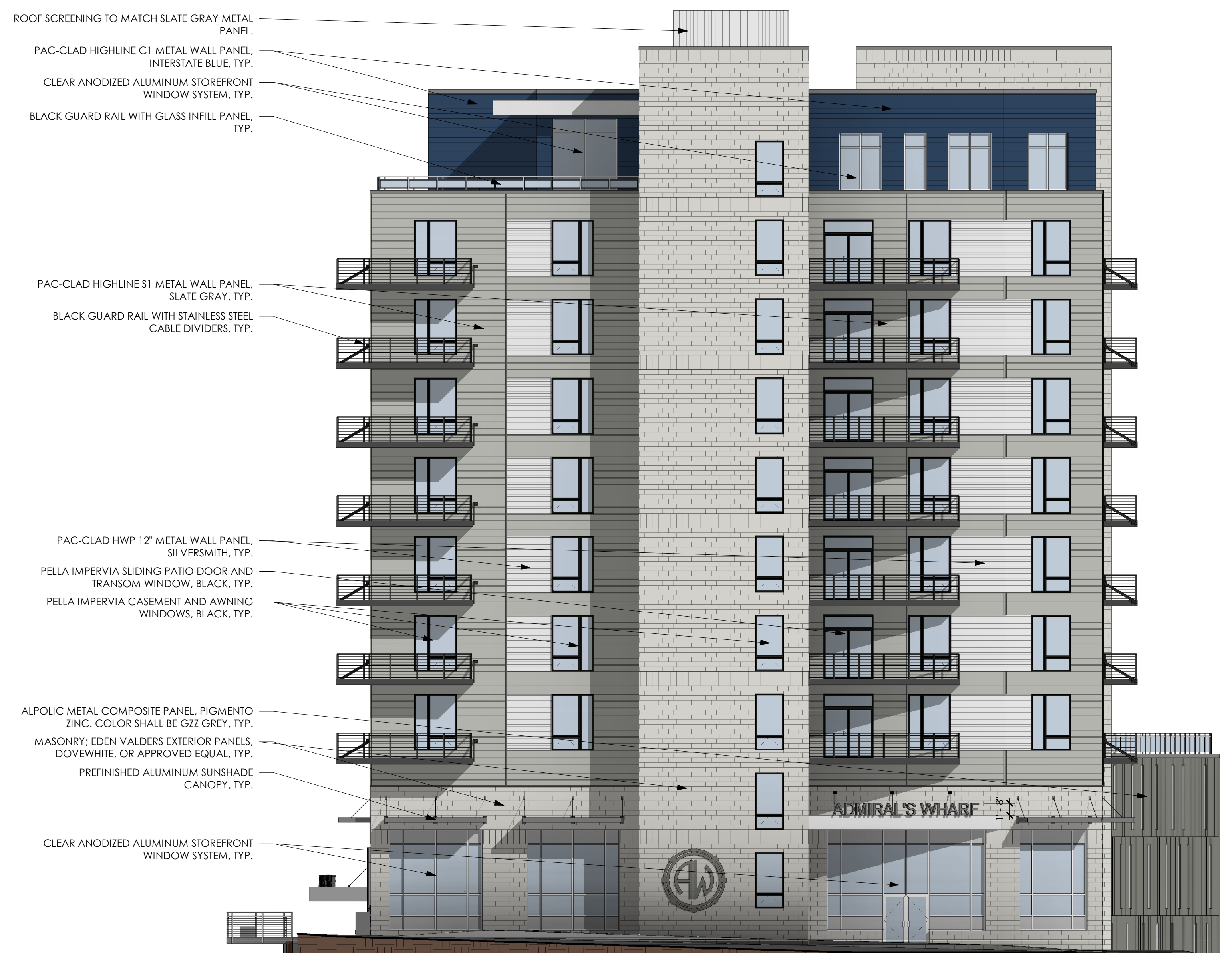
DATE	REV	ISSUE

DRAWINGS AND SPECIFICATIONS AS INSTRUMENTS OF SERVICE ARE THE PROPERTY OF VJS CONSTRUCTION SERVICES. THE ARCHITECT/ENGINEER ASSUMES NO RESPONSIBILITY OR LIABILITY FOR THE USE OF THESE PLANS FOR ANY PROJECT OTHER THAN SPECIFICALLY AUTHORIZED BY THEM AND SIGNED AND SEALED FOR SUCH SPECIFIC LOCATION IN THE STATE, PROVINCE, OR TERRITORY SHOWN ON THE SEAL.

PROJECT NUMBER 1170764
 DATE 11/19/2019
 DRAWN BY BDG
 CHECKED BY KAK
 SCALE 3/32" = 1'-0"

EXTERIOR
 ELEVATIONS

A4.02



- ROOF SCREENING TO MATCH SLATE GRAY METAL PANEL.
- PAC-CLAD HIGHLINE C1 METAL WALL PANEL, INTERSTATE BLUE, TYP.
- CLEAR ANODIZED ALUMINUM STOREFRONT WINDOW SYSTEM, TYP.
- BLACK GUARD RAIL WITH GLASS INFILL PANEL, TYP.
- PAC-CLAD HIGHLINE S1 METAL WALL PANEL, SLATE GRAY, TYP.
- BLACK GUARD RAIL WITH STAINLESS STEEL CABLE DIVIDERS, TYP.
- PAC-CLAD HWP 12" METAL WALL PANEL, SILVERSMITH, TYP.
- PELLA IMPERVIA SLIDING PATIO DOOR AND TRANSOM WINDOW, BLACK, TYP.
- PELLA IMPERVIA CASEMENT AND AWNING WINDOWS, BLACK, TYP.
- ALPOLIC METAL COMPOSITE PANEL, PIGMENTO ZINC. COLOR SHALL BE GZZ GREY, TYP.
- MASONRY; EDEN VALDERS EXTERIOR PANELS, DOVEWHITE, OR APPROVED EQUAL, TYP.
- PREFINISHED ALUMINUM SUNSHADE CANOPY, TYP.
- CLEAR ANODIZED ALUMINUM STOREFRONT WINDOW SYSTEM, TYP.

① NORTH ELEVATION
 3/32" = 1'-0"

PROPOSED SCHEMATIC
 DRAWINGS FOR:

**ADMIRAL'S
 WHARF**

234 S WATER ST
 MILWAUKEE, WI

FILE NUMBER: 190784

DATE	REV	ISSUE

DRAWINGS AND SPECIFICATIONS AS INSTRUMENTS OF SERVICE ARE THE PROPERTY OF VJS CONSTRUCTION SERVICES. THE ARCHITECT/ENGINEER ASSUMES NO RESPONSIBILITY OR LIABILITY FOR THE USE OF THESE PLANS FOR ANY PROJECT OTHER THAN SPECIFICALLY AUTHORIZED BY THEM AND SIGNED AND SEALED FOR SUCH SPECIFIC LOCATION IN THE STATE, PROVINCE, OR TERRITORY SHOWN ON THE SEAL.

PROJECT NUMBER 1170764
 DATE 11/19/2019
 DRAWN BY BDG
 CHECKED BY KAK
 SCALE 3/32" = 1'-0"

EXTERIOR
 ELEVATIONS

A4.03

- PAC-CLAD HIGHLINE C1 METAL WALL PANEL, INTERSTATE BLUE, TYP.
- CLEAR ANODIZED ALUMINUM STOREFRONT WINDOW SYSTEM, TYP.
- BLACK GUARD RAIL WITH GLASS INFILL PANEL, TYP.
- PAC-CLAD HIGHLINE S1 METAL WALL PANEL, MUSKET GRAY, TYP.
- BLACK GUARD RAIL WITH STAINLESS STEEL CABLE DIVIDERS, TYP.
- PAC-CLAD HIGHLINE S1 METAL WALL PANEL, SLATE GRAY, TYP.
- PAC-CLAD HWP 12" METAL WALL PANEL, SILVERSMITH, TYP.
- MASONRY: EDEN VALDERS EXTERIOR PANELS, DOVEWHITE, OR APPROVED EQUAL, TYP.
- PELLA IMPERVIA SLIDING PATIO DOOR AND TRANSOM WINDOW, BLACK, TYP.
- PELLA IMPERVIA CASEMENT AND AWNING WINDOWS, BLACK, TYP.
- BLACK GUARD RAIL WITH GLASS INFILL PANEL, TYP.
- CAST-IN-PLACE CONCRETE, HISTORICAL MURAL BY MILWAUKEE HARBOR DISTRICT. SEE RIVERWALK RENDERINGS.
- WALL-HUNG MODULAR GREENSCREEN PANELS, TYP. SEE LANDSCAPE PLAN FOR PLANTING DETAILS.
- LED RIVERWALK ACCENT LIGHTING, TYP.
- MASONRY: EDEN VALDERS EXTERIOR PANELS, DOVEWHITE, OR APPROVED EQUAL, TYP.
- RIVERWALK FOOT LIGHTING: VITRA HORIZONTAL LED BRICK LIGHT OR APPROVED EQUAL, TYP.
- LOWER RIVERWALK LIGHTING LOCATED ON SHEET PILE WALL; FIXTURES TO BE DETERMINED, TYP.
- CLEAR ANODIZED ALUMINUM STOREFRONT WINDOW SYSTEM, TYP.
- BLACK METAL GUARD RAIL WITH STAINLESS STEEL CABLE DIVIDERS, TYP.; RIVERWALK.
- NEW SHEETPILE WALL. SEE CIVIL DRAWINGS.



① EAST ELEVATION
 3/32" = 1'-0"

PROPOSED SCHEMATIC
 DRAWINGS FOR:

**ADMIRAL'S
 WHARF**

234 S WATER ST
 MILWAUKEE, WI

FILE NUMBER: 190784

DATE	REV	ISSUE

DRAWINGS AND SPECIFICATIONS AS INSTRUMENTS OF SERVICE ARE THE PROPERTY OF VJS CONSTRUCTION SERVICES. THE ARCHITECT/ENGINEER ASSUMES NO RESPONSIBILITY OR LIABILITY FOR THE USE OF THESE PLANS FOR ANY PROJECT OTHER THAN SPECIFICALLY AUTHORIZED BY THEM AND SIGNED AND SEALED FOR SUCH SPECIFIC LOCATION IN THE STATE, PROVINCE, OR TERRITORY SHOWN ON THE SEAL.

PROJECT NUMBER 1170764
 DATE 11/19/2019
 DRAWN BY BDG
 CHECKED BY KAK
 SCALE 3/32" = 1'-0"

EXTERIOR
 ELEVATIONS

A4.04



ROOF SCREENING TO MATCH SLATE GRAY METAL PANEL.
 PAC-CLAD HIGHLINE C1 METAL WALL PANEL, INTERSTATE BLUE, TYP.
 CLEAR ANODIZED ALUMINUM STOREFRONT WINDOW SYSTEM, TYP.
 BLACK GUARD RAIL WITH GLASS INFILL PANEL, TYP.
 BLACK GUARD RAIL WITH STAINLESS STEEL CABLE DIVIDERS, TYP.

PAC-CLAD HIGHLINE S1 METAL WALL PANEL, SLATE GRAY, TYP.
 MASONRY; EDEN VALDERS EXTERIOR PANELS, DOVEWHITE, OR APPROVED EQUAL, TYP.
 PAC-CLAD HWP 12" METAL WALL PANEL, SILVERSMITH, TYP.
 PELLA IMPERVIA CASEMENT AND AWNING WINDOWS, BLACK, TYP.

ALPOLIC METAL COMPOSITE PANEL, PIGMENTO ZINC. COLOR SHALL BE GZZ GREY, TYP.
 MASONRY; EDEN VALDERS EXTERIOR PANELS, DOVEWHITE, OR APPROVED EQUAL, TYP.
 CLEAR ANODIZED ALUMINUM STOREFRONT WINDOW SYSTEM, TYP.
 CLEAR ANODIZED ALUMINUM OVERHEAD DOORS WITH SPANDREL BOTTOM PANEL, TYP.
 H.M. DOOR AND FRAME PAINTED TO MATCH SURROUNDING MASONRY, TYP.
 MECHANICAL GRILLES; PAINT TO MATCH SURROUNDING MASONRY, TYP.

① SOUTH ELEVATION
 3/32" = 1'-0"