

S.W. 1/4 SEC. 31, T.7N., R.22E.

434

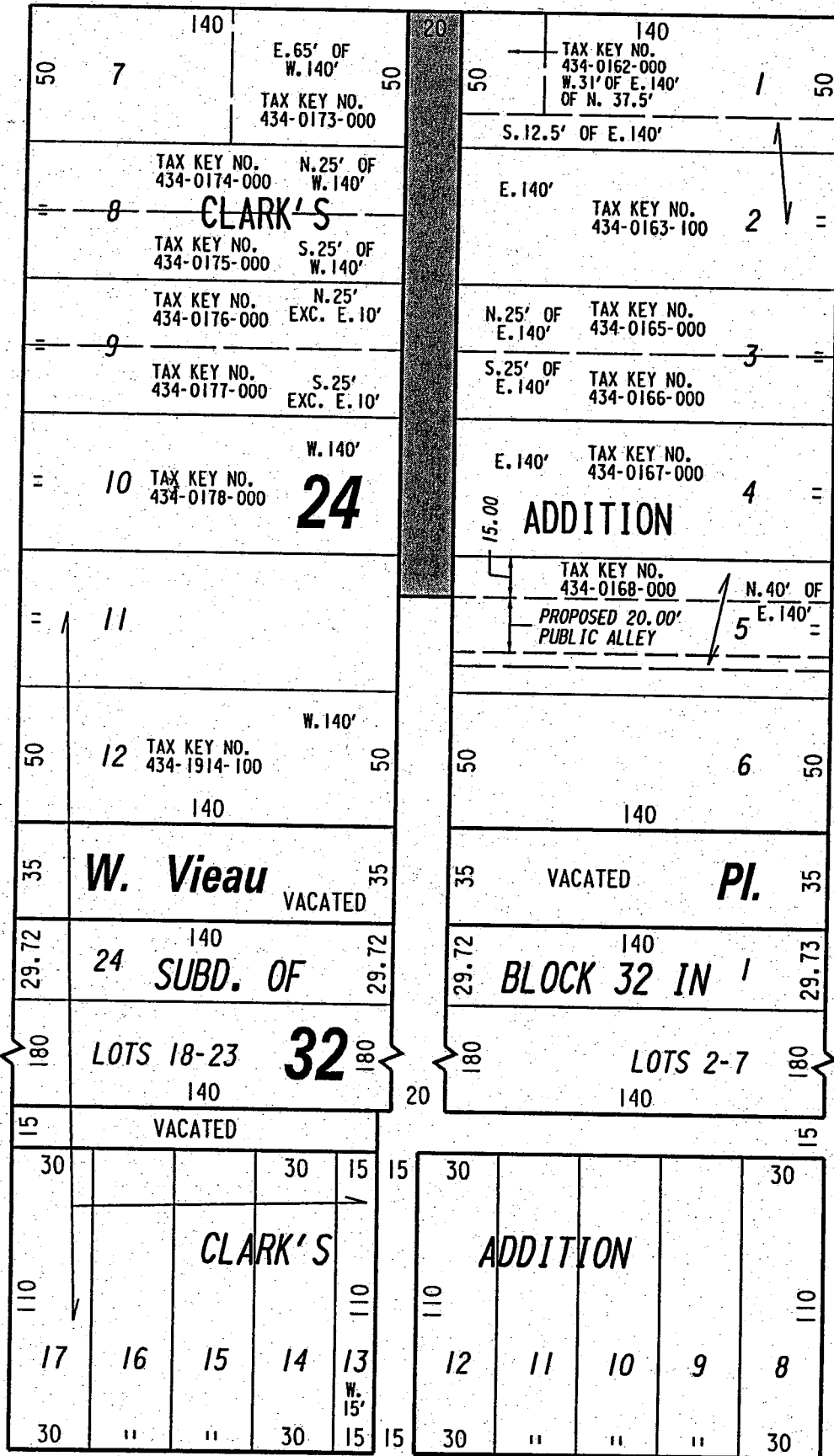
W. Mineral

(70' R.O.W.)

St.

St.

St.



(70' R.O.W.)

(70' R.O.W.)

S. 25th

S. 24th

W. Scott

(70' R.O.W.)

St.

EXHIBIT "A"

FILE NO. 010438

INFRASTRUCTURE SERVICES DIVISION

MILWAUKEE, WISCONSIN

ASSIGNED TO: W.E. FUCHS

CH'K'D. BY: M.C. WILLIAMS

DRAWN BY: W.E.F.

DATE: NOV. 30, 2001


PROJECT/GRANT NO.: WK52337138

SCALE: 1" = 60'

APPROVED BY:

Marcia Lindholm
 CENTRAL DRAFTING & RECORDS MANAGER

[Signature]
 CITY ENGINEER

 PORTION OF PUBLIC ALLEY PROPOSED TO BE VACATED

REVISED: 7-24-2002

LIMITS REVISED